



REGIONAL SPECIALISED METEOROLOGICAL CENTRE-TROPICAL CYCLONES, NEW DELHI
TROPICAL CYCLONE ADVISORY NO. 05

DEMS-RSMC TROPICAL CYCLONES NEW DELHI DATED 17.11.2023

FROM: RSMC –TROPICAL CYCLONES, NEW DELHI

TO: STORM WARNING CENTRE, DHAKA (BANGLADESH)
STORM WARNING CENTRE, NAYPYI TAW (MYANMAR)
STORM WARNING CENTRE, BANGKOK (THAILAND)
STORM WARNING CENTRE, COLOMBO (SRILANKA)
STORM WARNING CENTRE, KARACHI (PAKISTAN)
METEOROLOGICAL OFFICE, MALE (MALDIVES)
OMAN METEOROLOGICAL DEPARTMENT, MUSCAT (THROUGH RTH JEDDAH)
YEMEN METEOROLOGICAL SERVICES, REPUBLIC OF YEMEN (THROUGH RTH JEDDAH)
NATIONAL CENTRE FOR METEOROLOGY, UAE (THROUGH RTH JEDDAH)
PRESIDENCY OF METEOROLOGY AND ENVIRONMENT, SAUDI ARABIA (THROUGH RTH JEDDAH)
IRAN METEOROLOGICAL ORGANISATION, (THROUGH RTH JEDDAH)
QATAR METEOROLOGICAL DEPARTMENT (THROUGH RTH JEDDAH)

TROPICAL CYCLONE ADVISORY NO. 5 FOR NORTH INDIAN OCEAN (THE BAY OF BENGAL AND ARABIAN SEA) VALID FOR NEXT 120 HOURS ISSUED AT 1100 UTC OF 17.11.2023 BASED ON 0900 UTC OF 17.11.2023

SUB: CYCLONIC STORM “MIDHILI” (PRONOUNCED AS “MIDHILI”) CROSSED BANGLADESH COAST NEAR KHEPUPARA BETWEEN 0900-1000 UTC

THE CYCLONIC STORM “MIDHILI” (PRONOUNCED AS “MIDHILI”) OVER NORTHEAST AND ADJOINING NORTHWEST BAY OF BENGAL MOVED NORTH-NORTHEASTWARDS AND CROSSED BANGLADESH COAST NEAR KHEPUPARA DURING 0900-1000 UTC. IT THEN CONTINUED TO MOVE NORTH-NORTHEASTWARDS ACROSS THE ISLANDS OF BANGLADESH AS A CYCLONIC STORM WITH WIND SPEED OF 65-75 KMPH GUSTING TO 85 KMPH AND LAY CENTERED AT 1200 UTC OF TODAY, THE 17TH NOVEMBER OVER COASTAL BANGLADESH NEAR LATITUDE 22.8°N AND LONGITUDE 90.8°E, ABOUT 20 KM EAST-NORTHEAST OF BHOLA (41951), 30 KM WEST-SOUTHWEST OF MAJDICOURT (41953), 110 KM NORTHEAST OF KHEPUPARA (41984) AND 120 KM SOUTHWEST OF CHITTAGONG (41977).

IT IS LIKELY TO MOVE NORTH-NORTHEASTWARDS AND WEAKEN INTO A DEEP DEPRESSION OVER TRIPURA & ADJOINING BANGLADESH DURING NEXT 6 HOURS AND INTO A DEPRESSION OVER SOUTH ASSAM AND ADJOINING MIZORAM & TRIPURA DURING SUBSEQUENT 6 HOURS.

FORECAST TRACK AND INTENSITY ARE GIVEN BELOW:

DATE/TIME (UTC)	POSITION (LAT. °N/ LONG. °E)	MAXIMUM SUSTAINED SURFACE WIND SPEED (KMPH)	CATEGORY OF CYCLONIC DISTURBANCE
17.11.23/1200	22.8/90.8	60-70 KMPH GUSTING TO 80 KMPH	CYCLONIC STORM
17.11.23/1800	23.6/91.6	50-60 KMPH GUSTING TO 70 KMPH	DEEP DEPRESSION
18.11.23/0000	24.3/92.4	35-45 KMPH GUSTING TO 55 KMPH	DEPRESSION

Cloud distribution: (a) Isolated: <25%, Scattered:25-50%, Broken: 51-75%, Solid:>75%, Convection Intensity: (a) Weak: Cloud Top Temperature (CTT) >-25°C, (b) Moderate: CTT: - 25°C to -40°C, (c) Intense: CTT: - 41°C to -70°C and (d) Very Intense: : Less than -70°C
PROBABILITY OF CYCLOGENESIS (FORMATION OF DEPRESSION):NIL: 0%, LOW: 1-33%, , MODERATE: 34-66% AND HIGH: 67-100%
This is a guidance Bulletin for WMO/ESCAP Panel Member countries. Visit respective National websites for Country specific Bulletins

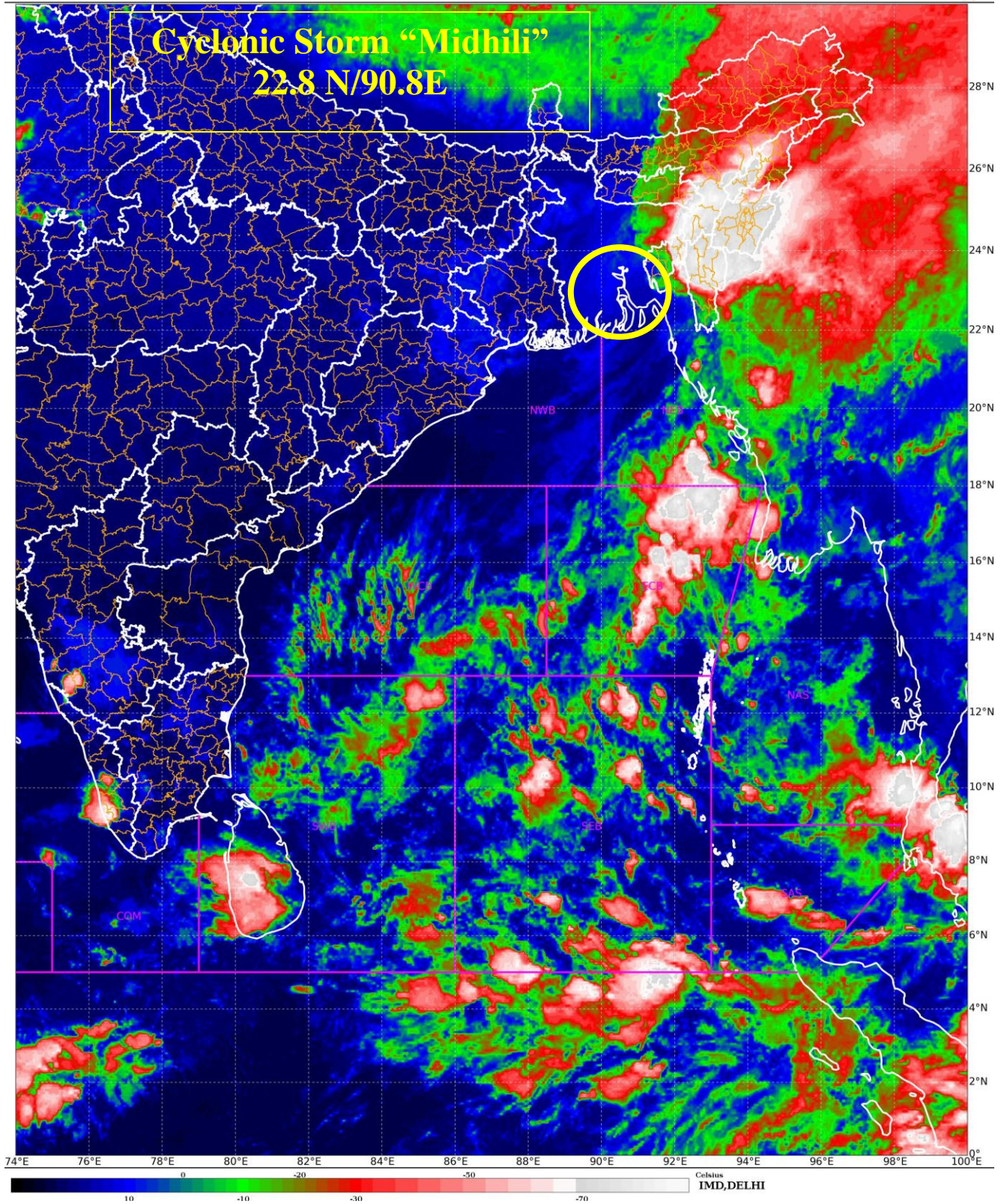
THE ASSOCIATED MAXIMUM SUSTAINED WIND SPEED IS 35 KNOTS GUSTING TO 45 KNOTS. THE WINDS ARE RELATIVELY STRONGER IN NORTHEAST SECTOR. THE ESTIMATED CENTRAL PRESSURE IS 998 HPA. HIGH SEA CONDITION WOULD PREVAIL OVER NORTHEAST & ADJOINING NORTHWEST BAY OF BENGAL AND ALONG & OFF BANGLADESH COAST AND ROUGH TO VERY ROUGH SEA CONDITIONS ALONG & OFF ADJOINING MYANMAR COAST TILL 1800 UTC OF 17TH NOVEMBER. SEA CONDITION WOULD IMPROVE THEREAFTER BECOMING MODERATE TO ROUGH BY FORENOON OF 18TH. VERY ROUGH TO ROUGH SEA CONDITION IS LIKELY OVER ALONG & OFF WEST BENGAL TILL 17TH NOVEMBER MIDNIGHT.

CLOUDS ASSOCIATED WITH THE CYCLONIC STORM ARE ORGANISED IN SHEAR PATTERN. BROKEN LOW & MEDIUM CLOUDS WITH EMBEDDED INTENSE TO VERY INTENSE CONVECTION LAY OVER EAST BANGLADESH, TRIPURA, MIZORAM, MANIPUR, SOUTH & EAST ASSAM, NAGALAND AND ADJOINING NORTH MYANMAR.

STORM SURGE GUIDANCE:

STORM SURGE OF ABOUT 0.5-1.0 METER HEIGHT ABOVE THE ASTRONOMICAL TIDE IS LIKELY TO INUNDATE LOW LYING AREAS OF COASTAL BANGLADESH DURING NEXT 6 HOURS.

(M. SHARMA)
SCIENTIST-D
RSMC NEW DELHI



Cloud distribution: (a) Isolated: <25%, Scattered:25-50%, Broken: 51-75%, Solid:>75%, Convection Intensity: (a) Weak: Cloud Top Temperature (CTT) >-25°C, (b) Moderate: CTT: - 25°C to -40°C, (c) Intense: CTT: - 41°C to -70°C and (d) Very Intense: : Less than -70°C
PROBABILITY OF CYCLOGENESIS (FORMATION OF DEPRESSION):NIL: 0%, LOW: 1-33%, , MODERATE: 34-66% AND HIGH: 67-100%
This is a guidance Bulletin for WMO/ESCAP Panel Member countries. Visit respective National websites for Country specific Bulletins



OBSERVED AND FORECAST TRACK AND INTENSITY ALONGWITH CONE OF UNCERTAINTY IN ASSOCIATION WITH CYCLONIC STORM MIDHILI OVER COASTAL BANGLADESH BASED ON 1200 UTC (1730 HRS IST) OF 17TH NOVEMBER 2023.



DATE/TIME IN UTC

IST=UTC + 0530

L: LOW PRESSURE AREA

WML: WELL MARKED LOW PRESSURE AREA

D: DEPRESSION (17-27 KT)

DD: DEEP DEPRESSION (28-33 KT)

CS: CYCLONIC STORM (34-47 KT)

SCS: SEVERE CYCLONIC STORM (48-63KT)

VSCS: VERY SEVERE CYCLONIC STORM (64-89 KT)

ESCS: EXTREMELY SEVERE CYCLONIC STORM (90-119 KT)

SuCS: SUPER CYCLONIC STORM (≥ 120 KT)

● LESS THAN 34 KT

○ 34-47 KT

⊖ ≥ 48 KT

— OBSERVED TRACK

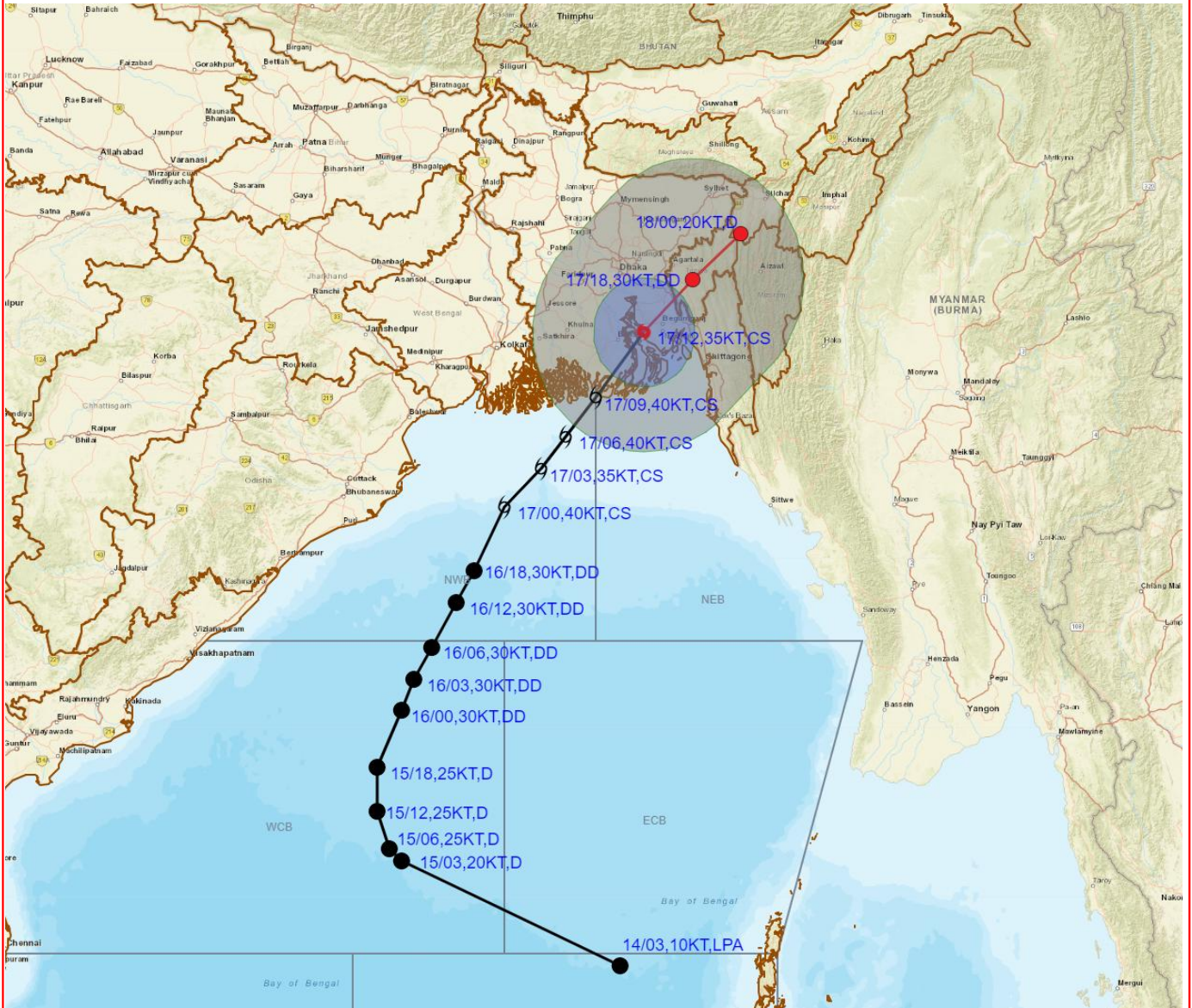
— FORECAST TRACK

▲ CONE OF UNCERTAINTY

Cloud distribution: (a) Isolated: <25%, Scattered:25-50%, Broken: 51-75%, Solid:>75%, Convection Intensity: (a) Weak: Cloud Top Temperature (CTT) >-25°C, (b) Moderate: CTT: - 25°C to -40°C, (c) Intense: CTT: - 41°C to -70°C and (d) Very Intense: : Less than -70°C
 PROBABILITY OF CYCLOGENESIS (FORMATION OF DEPRESSION):NIL: 0%, LOW: 1-33%, , MODERATE: 34-66% AND HIGH: 67-100%
 This is a guidance Bulletin for WMO/ESCAP Panel Member countries. Visit respective National websites for Country specific Bulletins



OBSERVED AND FORECAST TRACK AND INTENSITY ALONG WITH QUADRANT WIND DISTRIBUTION IN ASSOCIATION WITH CYCLONIC STORM MIDHILI OVER COASTAL BANGLADESH BASED ON 1200 UTC (1730 HRS IST) OF 17TH NOVEMBER 2023.



DATE/TIME IN UTC
IST=UTC + 0530

L: LOW PRESSURE AREA
WML: WELL MARKED LOW PRESSURE AREA
D: DEPRESSION (17-27 KT)
DD: DEEP DEPRESSION (28-33 KT)
CS: CYCLONIC STORM (34.47 KT)
SCS: SEVERE CYCLONIC STORM (48-63KT)
VSCS: VERY SEVERE CYCLONIC STORM (64-89 KT)
ESCS: EXTREMELY SEVERE CYCLONIC STORM (90-119 KT)
SuCS: SUPER CYCLONIC STORM (≥ 120 KT)

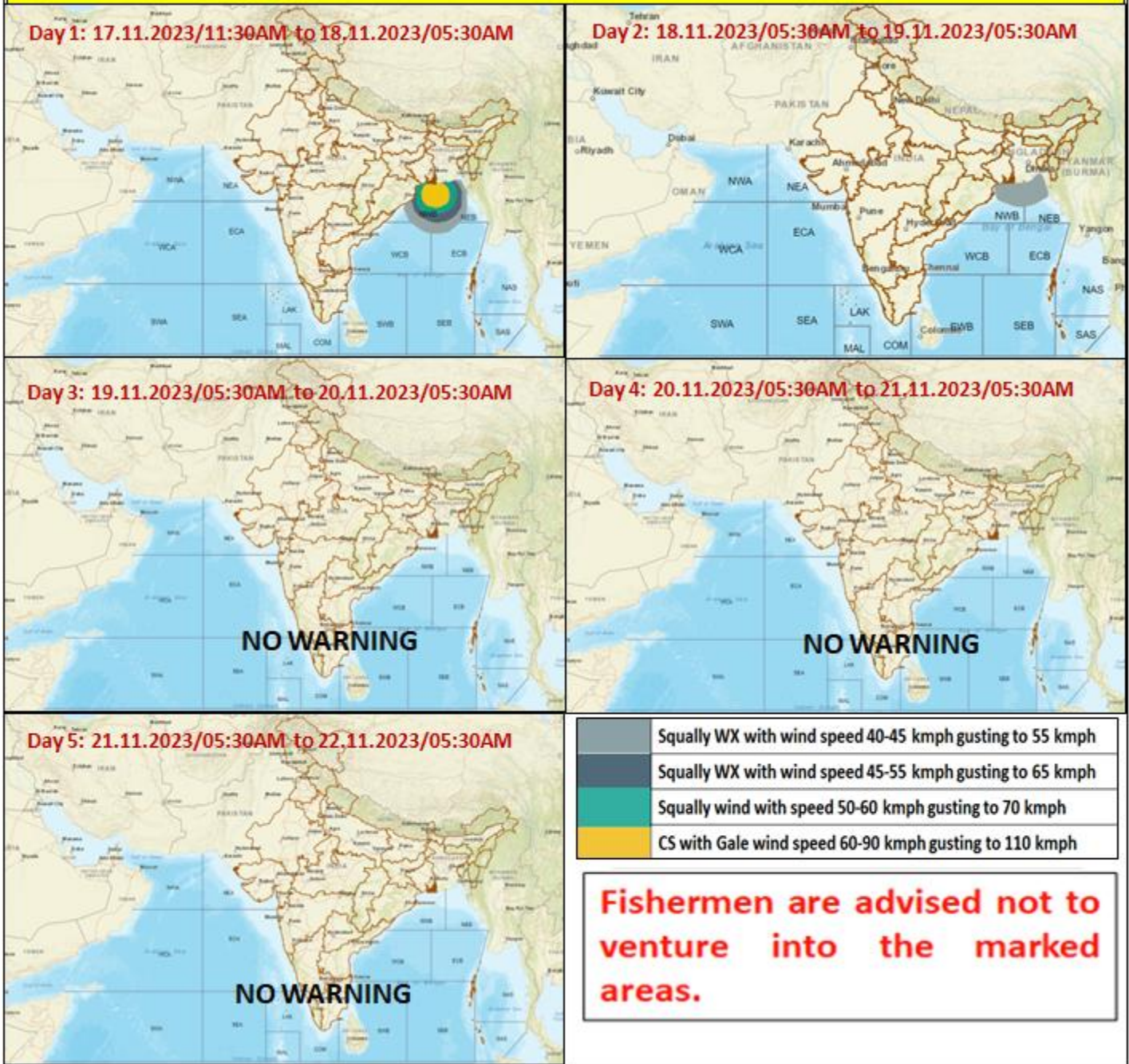
● LESS THAN 34 KT
○ 34.47 KT
○ ≥ 48 KT
— OBSERVED TRACK
— FORECAST TRACK
▲ CONE OF UNCERTAINTY
AREA OF MAXIMUM SUSTAINED WIND SPEED:
■ 28-33 KT (52-61 KMPH)
■ 34-49 KT (62-91 KMPH)
■ 50-63 KT (92-117 KMPH)
■ ≥ 64 KT (≥118 KMPH)

IMPACT OVER THE SEA

MSW (knot/kmph)	Impact	Action
28-33 (52-61)	Very rough seas	Total suspension of fishing operations
34-49 (62-91)	High to very high seas	Total suspension of fishing operations
50-63 (92-117)	Very high seas	Total suspension of fishing operations
≥ 64 (≥118)	Phenomenal	Total suspension of fishing operations

Cloud distribution: (a) Isolated: <25%, Scattered:25-50%, Broken: 51-75%, Solid:>75%, Convection Intensity: (a) Weak: Cloud Top Temperature (CTT) >-25°C, (b) Moderate: CTT: - 25°C to -40°C, (c) Intense: CTT: - 41°C to -70°C and (d) Very Intense: : Less than -70°C
PROBABILITY OF CYCLOGENESIS (FORMATION OF DEPRESSION):NIL: 0%, LOW: 1-33%, , MODERATE: 34-66% AND HIGH: 67-100%
This is a guidance Bulletin for WMO/ESCAP Panel Member countries. Visit respective National websites for Country specific Bulletins

Fishermen warning graphics



Cloud distribution: (a) Isolated: <25%, Scattered:25-50%, Broken: 51-75%, Solid:>75%, Convection Intensity: (a) Weak: Cloud Top Temperature (CTT) >-25°C, (b) Moderate: CTT: - 25°C to -40°C, (c) Intense: CTT: - 41°C to -70°C and (d) Very Intense: : Less than -70°C
 PROBABILITY OF CYCLOGENESIS (FORMATION OF DEPRESSION):NIL: 0%, LOW: 1-33%, , MODERATE: 34-66% AND HIGH: 67-100%
 This is a guidance Bulletin for WMO/ESCAP Panel Member countries. Visit respective National websites for Country specific Bulletins