



**REGIONAL SPECIALISED METEOROLOGICAL CENTRE-TROPICAL CYCLONES, NEW DELHI  
TROPICAL WEATHER OUTLOOK**

**DEMS-RSMC TROPICAL CYCLONES NEW DELHI DATED 26.07.2024**

**TROPICAL WEATHER OUTLOOK FOR NORTH INDIAN OCEAN (THE BAY OF BENGAL AND THE ARABIAN SEA) VALID FOR NEXT 168 HOURS ISSUED AT 0600 UTC OF 26.07.2024 BASED ON 0300 UTC OF 26.07.2024.**

**BAY OF BENGAL:**

A LOW PRESSURE AREA FORMED OVER NORTH BAY OF BENGAL AND ADJOINING COASTAL AREAS OF BANGLADESH AND GANGETIC WEST BENGAL WITH ASSOCIATED CYCLONIC CIRCULATION EXTENDING UPTO 7.6 KM ABOVE MEAN SEA LEVEL TILTING SOUTHWESTWARDS WITH HEIGHT AT 0300 UTC OF TODAY, THE 26TH JULY 2024. IT IS LIKELY TO MOVE WESTNORTH-WEST WARDS ACROSS GANGETIC WEST BENGAL & JHARKHAND DURING NEXT 2 DAYS.

SCATTERED TO BROKEN LOW AND MEDIUM CLOUDS WITH EMBEDDED INTENSE TO VERY INTENSE CONVECTION LAY OVER NORTH ADJOINING CENTRAL BAY OF BENGAL SOUTHEAST BAY OF BENGAL NORTH ANDAMAN SEA GULF OF MARTABAN & ARAKAN COAST. SCATTERED LOW AND MEDIUM CLOUDS WITH EMBEDDED MODERATE TO INTENSE CONVECTION LAY OVER REST BAY OF BENGAL.

**\*PROBABILITY OF CYCLOGENESIS (FORMATION OF DEPRESSION) DURING NEXT 168 HRS:**

24 HOURS	24-48 HOURS	48-72 HOURS	72-96 HOURS	96-120 HOURS	120-144 HOURS	144-168 HOURS
NIL	NIL	NIL	NIL	NIL	NIL	NIL

**\*NOTE: EVERY 24HR FORECAST IS VALID UPTO 0300 UTC (0830 IST) OF NEXT DAY**

**ARABIAN SEA:**

SCATTERED LOW AND MEDIUM CLOUDS WITH EMBEDDED MODERATE TO INTENSE CONVECTION LAY OVER GULF OF CAMBAY CENTRAL & SOUTH ARABIAN SEA LAKSHADWEEP ISLANDS & MALDIVES AREA. SCATTERED LOW AND MEDIUM CLOUDS WITH EMBEDDED WEAK TO MODERATE CONVECTION LAY OVER NORTH ARABIAN SEA.

**\*PROBABILITY OF CYCLOGENESIS (FORMATION OF DEPRESSION) DURING NEXT 168 HRS:**

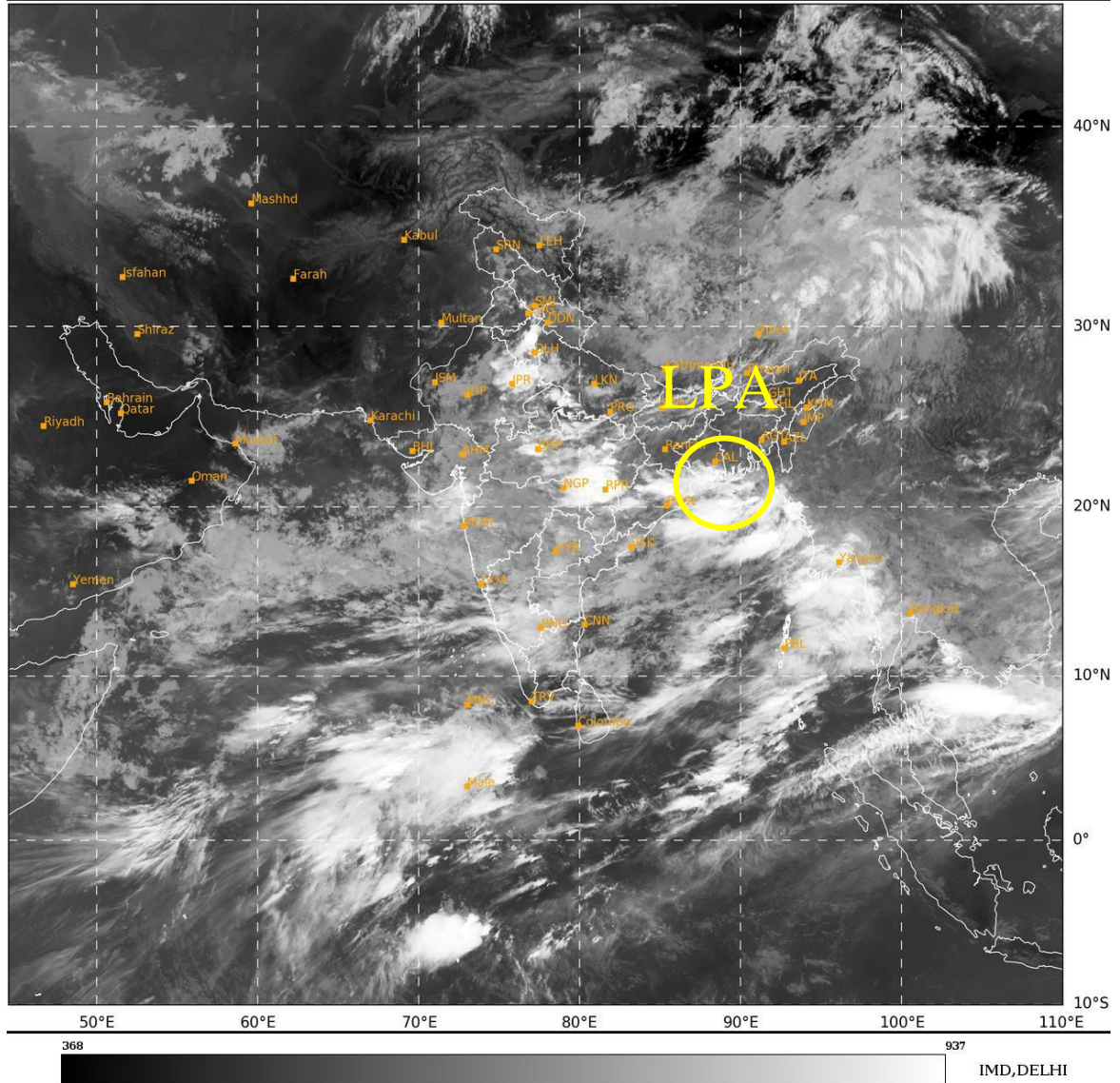
24 HOURS	24-48 HOURS	48-72 HOURS	72-96 HOURS	96-120 HOURS	120-144 HOURS	144-168 HOURS
NIL	NIL	NIL	NIL	NIL	NIL	NIL

**\*NOTE: EVERY 24HR FORECAST IS VALID UPTO 0300 UTC (0830 IST) OF NEXT DAY**

**REMARKS:** NIL

SAT : INSAT-3DR IMG  
IMG\_TIR1 10.8 um  
L1C Mercator

26-07-2024/(0315 to 0342) GMT  
26-07-2024/(0845 to 0912) IST



LPA: Low Pressure Area

Cloud distribution: (a) Isolated: <25%, Scattered:25-50%, Broken: 51-75%, Solid:>75%, Convection Intensity: (a) Weak: Cloud Top Temperature (CTT) >-25°C, (b) Moderate: CTT: - 25°C to -40°C, (c) Intense: CTT: - 41°C to -70°C and (d) Very Intense: : Less than -70°C  
PROBABILITY OF CYCLOGENESIS (FORMATION OF DEPRESSION):NIL: 0%, LOW: 1-33%, , MODERATE: 34-66% AND HIGH: 67-100%  
This is a guidance Bulletin for WMO/ESCAP Panel Member countries. Visit respective National websites for Country specific Bulletins