



**REGIONAL SPECIALISED METEOROLOGICAL CENTRE-TROPICAL CYCLONES, NEW DELHI
TROPICAL WEATHER OUTLOOK**

DEMS-RSMC TROPICAL CYCLONES NEW DELHI DATED 17.10.2021

TROPICAL WEATHER OUTLOOK FOR NORTH INDIAN OCEAN (THE BAY OF BENGAL AND ARABIAN SEA) VALID FOR NEXT 120 HOURS ISSUED AT 0600 UTC OF 17.10.2021 BASED ON 0300 UTC OF 17.10.2021.

BAY OF BENGAL:

YESTERDAY'S LOW PRESSURE AREA LAY OVER NORTH TELANGANA & NEIGHBOURHOOD AT 0300 UTC OF 17TH OCTOBER, WITH THE ASSOCIATED CYCLONIC CIRCULATION EXTENDING UPTO 5.8 KM ABOVE MEAN SEA LEVEL TILTING SOUTHWESTWARDS WITH HEIGHT PERSISTS.

SCATTERED TO BROKEN LOW AND MEDIUM CLOUDS WITH EMBEDDED INTENSE TO VERY INTENSE CONVECTION LAY OVER NORTH ADJOINING CENTRAL BAY OF BENGAL, NORTH ANDAMAN SEA. SCATTERED LOW AND MEDIUM CLOUDS WITH EMBEDDED MODERATE TO INTENSE CONVECTION LAY OVER SOUTH BAY OF BENGAL, SOUTH ANDAMAN SEA.

PROBABILITY OF CYCLOGENESIS (FORMATION OF DEPRESSION) DURING NEXT 120 HRS:

24 HOURS	24-48 HOURS	48-72 HOURS	72-96 HOURS	96-120 HOURS
NIL	NIL	NIL	NIL	NIL

ARABIAN SEA:

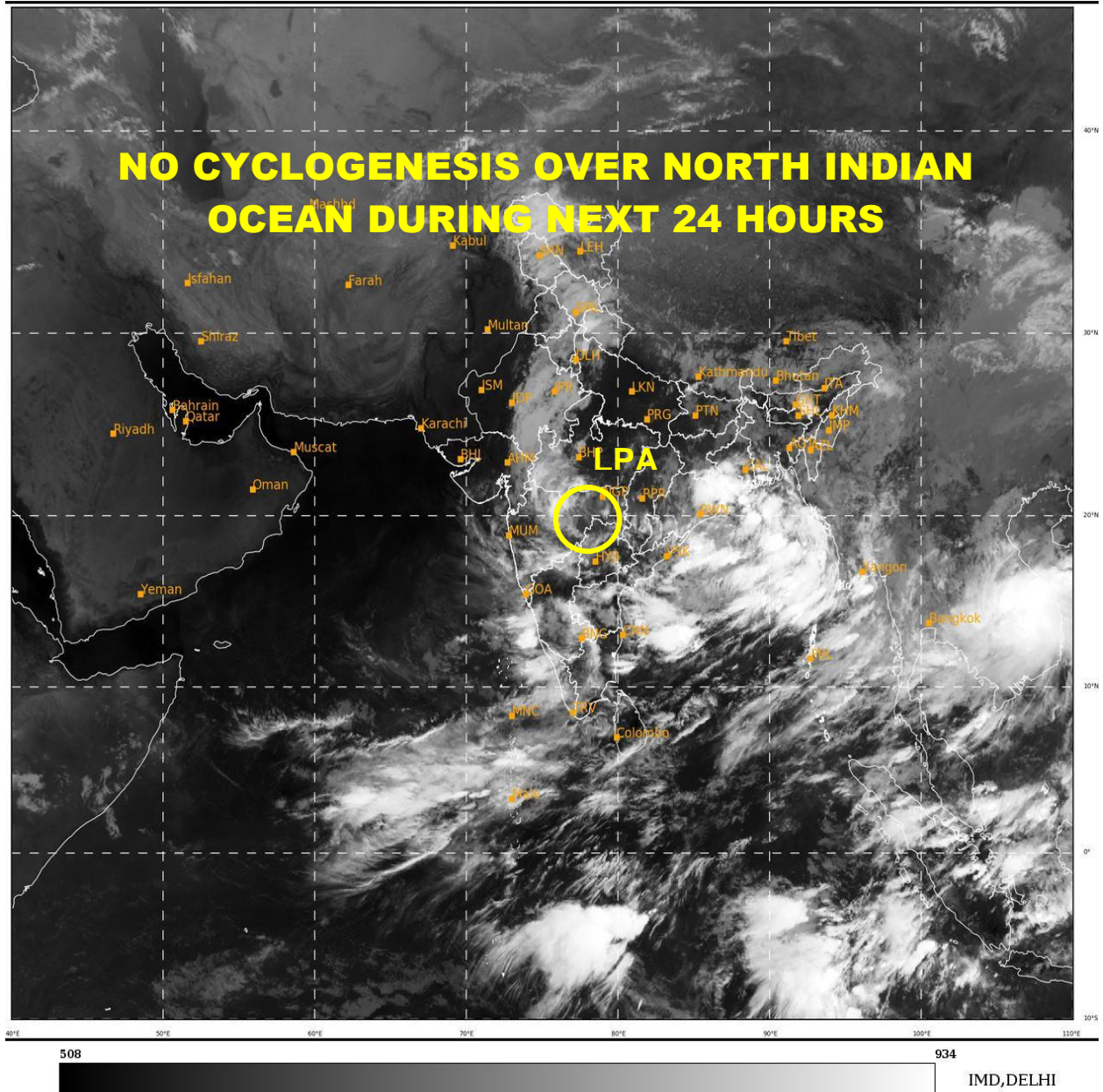
YESTERDAY'S LOW PRESSURE AREA OVER SOUTHEAST ARABIAN SEA & ADJOINING KERALA HAS BECOME LESS MARKED AT 0000 UTC OF 17TH OCTOBER.

SCATTERED LOW AND MEDIUM CLOUDS WITH EMBEDDED MODERATE TO INTENSE CONVECTION LAY OVER SOUTHEAST ARABIAN SEA ADJOINING EASTCENTRAL ARABIAN SEA LAKSHADWEEP. SCATTERED LOW AND MEDIUM CLOUDS WITH EMBEDDED WEAK TO MODERATE CONVECTION LAY OVER SOUTHWEST ARABIAN SEA, COMORIN.

PROBABILITY OF CYCLOGENESIS (FORMATION OF DEPRESSION) DURING NEXT 120 HRS:

24 HOURS	24-48 HOURS	48-72 HOURS	72-96 HOURS	96-120 HOURS
NIL	NIL	NIL	NIL	NIL

REMARKS: NIL



*LPA STANDS FOR LOW PRESSURE AREA