



**REGIONAL SPECIALISED METEOROLOGICAL CENTRE-TROPICAL CYCLONES, NEW DELHI
TROPICAL WEATHER OUTLOOK**

DEMS-RSMC TROPICAL CYCLONES NEW DELHI DATED 26.01.2023

TROPICAL WEATHER OUTLOOK FOR NORTH INDIAN OCEAN (THE BAY OF BENGAL AND THE ARABIAN SEA) VALID FOR NEXT 120 HOURS ISSUED AT 0600 UTC OF 26.01.2023 BASED ON 0300 UTC OF 26.01.2023.

BAY OF BENGAL:

YESTERDAY'S CYCLONIC CIRCULATION OVER EAST EQUATORIAL INDIAN OCEAN AND ADJOINING SOUTHEAST BAY OF BENGAL PERSISTS OVER SAME REGION AT 0300 UTC OF TODAY, THE 26TH JANUARY, 2023. UNDER ITS INFLUENCE, A LOW PRESSURE AREA IS LIKELY TO FORM OVER SOUTHEAST BAY OF BENGAL & ADJOINING EAST EQUATORIAL INDIAN OCEAN AROUND 27TH JANUARY, 2023. IT IS LIKELY TO MOVE WEST-NORTHWESTWARDS SLOWLY DURING SUBSEQUENT 3 DAYS.

SCATTERED TO BROKEN LOW AND MEDIUM CLOUDS WITH EMBEDDED INTENSE TO VERY INTENSE CONVECTION LAY OVER SOUTH BAY OF BENGAL SOUTH OF LAT 10⁰N & ADJOINING EQUATORIAL INDIAN OCEAN AND SOUTH ANDAMAN SEA. MINIMUM CLOUD TOP TEMPERATURE IS MINUS 93 DEGREE CELSIUS.

PROBABILITY OF CYCLOGENESIS (FORMATION OF DEPRESSION) DURING NEXT 120 HRS:

24 HOURS	24-48 HOURS	48-72 HOURS	72-96 HOURS	96-120 HOURS
NIL	NIL	NIL	NIL	NIL

ARABIAN SEA:

SCATTERED LOW AND MEDIUM CLOUDS WITH EMBEDDED MODERATE TO INTENSE CONVECTION LAY OVER SOUTHEAST ARABIAN SEA LAKSHADWEEP ISLANDS AREA AND COMORIN AREA.

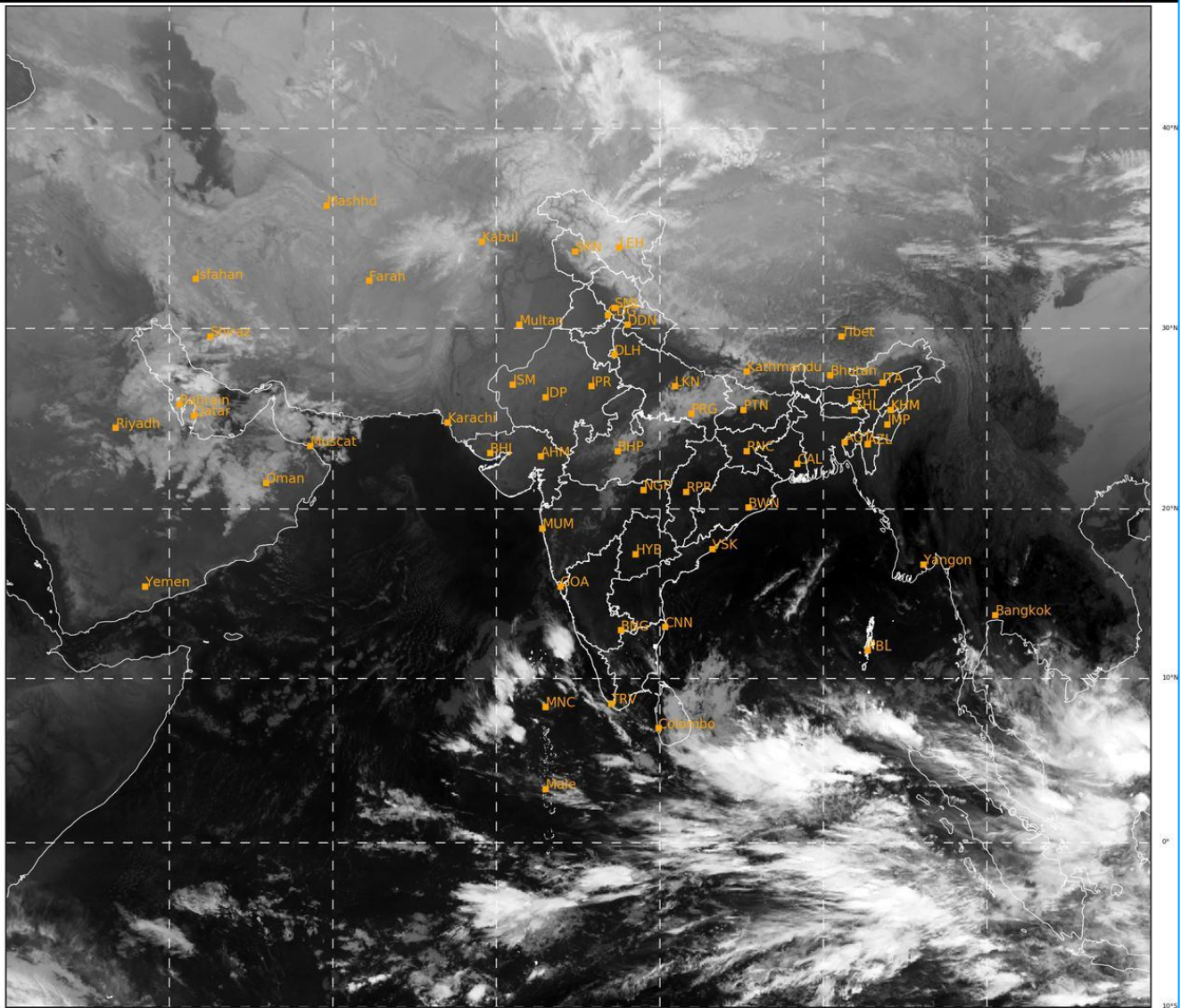
PROBABILITY OF CYCLOGENESIS (FORMATION OF DEPRESSION) DURING NEXT 120 HRS:

24 HOURS	24-48 HOURS	48-72 HOURS	72-96 HOURS	96-120 HOURS
NIL	NIL	NIL	NIL	NIL

REMARKS: NIL

SAT : INSAT-3D IMG
IMG_TIR1 10.8 um
L1C Mercator

26-01-2023/(0300 to 0327) GMT
26-01-2023/(0830 to 0857) IST



511

947

IMD, DELHI

Cloud distribution: (a) Isolated: <25%, Scattered:25-50%, Broken: 51-75%, Solid:>75%, Convection Intensity: (a) Weak: Cloud Top Temperature (CTT) >-25°C, (b) Moderate: CTT: - 25°C to -40°C, (c) Intense: CTT: - 41°C to -70°C and (d) Very Intense: : Less than -70°C
PROBABILITY OF CYCLOGENESIS (FORMATION OF DEPRESSION): NIL: 0%, LOW: 1-33%, , MODERATE: 34-66% AND HIGH: 67-100%
This is a guidance Bulletin for WMO/ESCAP Panel Member countries. Visit respective National websites for Country specific Bulletins