



Government of India  
Ministry of Earth Sciences



India Meteorological Department

## PRESS RELEASE - 6

Time of issue: 1300 hours IST

Dated: 05-12-2020

### Sub: Depression (remnant of cyclonic storm “BUREVI”) stationary over Gulf of Mannar since past 33 hours

Yesterday's deep depression over Gulf of Mannar close to Ramanathapuram district coast weakened into a depression in the same evening (1730 hrs IST) over the same region. It is practically stationary since past 33 hours.

At 0830 hrs IST of today, the 05<sup>th</sup> December, it lay over Gulf of Mannar close to Ramanathapuram district coast near latitude 9.1°N and longitude 78.6°E, about 40 km southwest of Ramanathapuram and 70 km west-southwest of Pamban. The associated wind speed is about 40-50 gusting to 60 kmph.

The depression is likely to remain practically stationary over the same region and weaken into a well marked low pressure area during next 12 hours.

#### Warnings:

##### (i) Rainfall

- Heavy to very heavy rainfall at isolated places very likely over Tamilnadu & Puducherry on 05<sup>th</sup> & 06<sup>th</sup> December.
- Heavy rainfall at isolated places over south Kerala & Mahe on 05<sup>th</sup> and heavy to very heavy rainfall at isolated places very likely over Kerala on 06<sup>th</sup> December.
- Heavy to very heavy rainfall at isolated places very likely over Lakshadweep on 05<sup>th</sup> & 06<sup>th</sup> December.

Sub-Divisions	05 Dec 2020*	06 Dec 2020*
Tamilnadu, Puducherry & Karaikal	Rainfall at most places with heavy to very heavy falls at isolated places	Rainfall at most places with heavy to very heavy falls at isolated places
South Kerala	Rainfall at most places with heavy falls at isolated places	Rainfall at most places with heavy to very heavy falls at isolated places
North Kerala & Mahe	Rainfall at many places	Rainfall at most places with heavy to very heavy falls at isolated places
Lakshadweep	Rainfall at most places with heavy to very heavy falls at isolated places	Rainfall at most places with heavy to very heavy falls at isolated places

##### (ii) Wind warning

- Squally wind speed reaching 40-50 kmph gusting to 60 kmph is very likely over Gulf of Mannar & adjoining southwest Bay of Bengal, along & off south Tamilnadu coast

Contact: Cyclone Warning Division, Office of the Director General of Meteorology, India Meteorological Department, Ministry of Earth Sciences.

Phone: (91) 11-24652484, FAX: (91) 11-24643128, 24623220, E-mail: [cwdhq2008@gmail.com](mailto:cwdhq2008@gmail.com), Website: [rsmcnnewdelhi.imd.gov.in](http://rsmcnnewdelhi.imd.gov.in)

Spatial rainfall distribution: Isolated: <25%, A few: 26-50%, Many: 51-75%, Most: 76-100%

Rainfall amount (mm): Heavy rain: 64.5 – 115.5, Very heavy rain: 115.6 – 204.4, Extremely heavy rain: 204.5 or more.

(Ramanathapuram, Thoothukudi, Tirunelveli and Kanniyakumari districts) during next 12 hours. It will gradually decrease to 35-45 kmph gusting to 55 kmph for subsequent 12 hours.

- Squally wind speed reaching 35-45 kmph gusting to 55 kmph very likely over Lakshadweep-Maldives & Comorin area, southeast Arabian Sea and along & off south Kerala coast on 5<sup>th</sup> and 6<sup>th</sup> December.

**(iii) Sea condition**

- Sea condition will be rough to very rough over Gulf of Mannar & adjoining southwest Bay of Bengal, along & off south Tamilnadu coast (Ramanathapuram, Thoothukudi, Tirunelveli and Kanniyakumari districts) on 5<sup>th</sup> December and improve thereafter.
- Sea condition will be rough to very rough over Lakshadweep-Maldives & Comorin area, southeast Arabian Sea and along & off south Kerala coast on 5<sup>th</sup> and 6<sup>th</sup> December.

**(iv) Fishermen warning and Action suggested**

- Fishermen are advised not to venture into Gulf of Mannar & adjoining southwest Bay of Bengal, along & off south Tamilnadu coast on 5<sup>th</sup>.
- Fishermen are advised not to venture into Lakshadweep-Maldives & Comorin area, southeast Arabian Sea and along & off south Kerala coast on 5<sup>th</sup> and 6<sup>th</sup> December.

**Chief amounts of rainfall ( $\geq 7$  cm) during past 24 hours (from 0830 hrs IST of 04<sup>th</sup> December to 0830 hrs IST of 05<sup>th</sup> December) over Tamilnadu, Puducherry & Karaikal is placed at Annexure-1.**

**The system is under continuous surveillance and the concerned state governments are being informed regularly.**

**For details kindly visit [www.rsmcnewdelhi.imd.gov.in](http://www.rsmcnewdelhi.imd.gov.in), [www.mausam.imd.gov.in](http://www.mausam.imd.gov.in)**

**Annexure-1**

**Chief amounts of rainfall ( $\geq 7$  cm) during past 24 hours (from 0830 hrs IST of 04<sup>th</sup> December to 0830 hrs IST of 05<sup>th</sup> December) over Tamilnadu, Puducherry & Karaikal**

<b>Rainfall Amount (cm)</b>	<b>Stations</b>
16	Nagapattinam (Nagapattinam) and Karaikal (Karaikal)
15	Kodavasal (Tiruvarur) and Bhuvanagiri (Cuddalore)
14	Sethiyathope (Cuddalore)
13	Tarangambadi (Nagapattinam)
12	Sirkali (Nagapattinam), Dgp Office (Chennai), Vembakkam (Tiruvannamalai) and Srimushnam (Cuddalore)
11	Rameswaram (Ramanathapuram), Anna University (Chennai), Tirupoondi (Nagapattinam) and Kayalpattinam (Toothukudi)
10	Sriperumbudur (Kancheepuram), Kollidam (Nagapattinam), Mgr Nagar (Chennai) and Pelandurai (Cuddalore)
9	Uthukottai (Tiruvallur), Chembarabakkam (Tiruvallur), Tuticorin (Toothukudi), Thalaignayer (Nagapattinam)
8	Chidambaram (Cuddalore), Mayiladuthurai (Nagapattinam), Gummidipoondi (Tiruvallur), Agaram Seegoor (Perambalur), Labbaikudikadu (Perambalur), Parangipettai (Cuddalore), Kurinjipadi (Cuddalore), Mandapam (Ramanathapuram), Manalmedu (Nagapattinam), Sholinganallur (Chennai)
7	Vilupuram (Villupuram), Tozhudur (Cuddalore), Bodinayakanur Arg (Theni), Vedaranyam (Nagapattinam), Thiruvaidaimaruthur (Thanjavur), Tiruchendur (Toothukudi), Poonamallee (Tiruvallur), Nannilam (Tiruvarur), Vridhachalam (Cuddalore), Pamban (Ramanathapuram), Thiruthuraipoondi (Tiruvarur), Tiruvarur (Tiruvarur), Valangaiman (Tiruvarur), Srivaikuntam (Toothukudi)

Contact: Cyclone Warning Division, Office of the Director General of Meteorology,

India Meteorological Department, Ministry of Earth Sciences.

Phone: (91) 11-24652484, FAX: (91) 11-24643128, 24623220, E-mail: [cwdhq2008@gmail.com](mailto:cwdhq2008@gmail.com), Website: [rsmcnwdelhi.imd.gov.in](http://rsmcnwdelhi.imd.gov.in)

Spatial rainfall distribution: Isolated: <25%, A few: 26-50%, Many: 51-75%, Most: 76-100%

Rainfall amount (mm): Heavy rain: 64.5 – 115.5, Very heavy rain: 115.6 – 204.4, Extremely heavy rain: 204.5 or more.

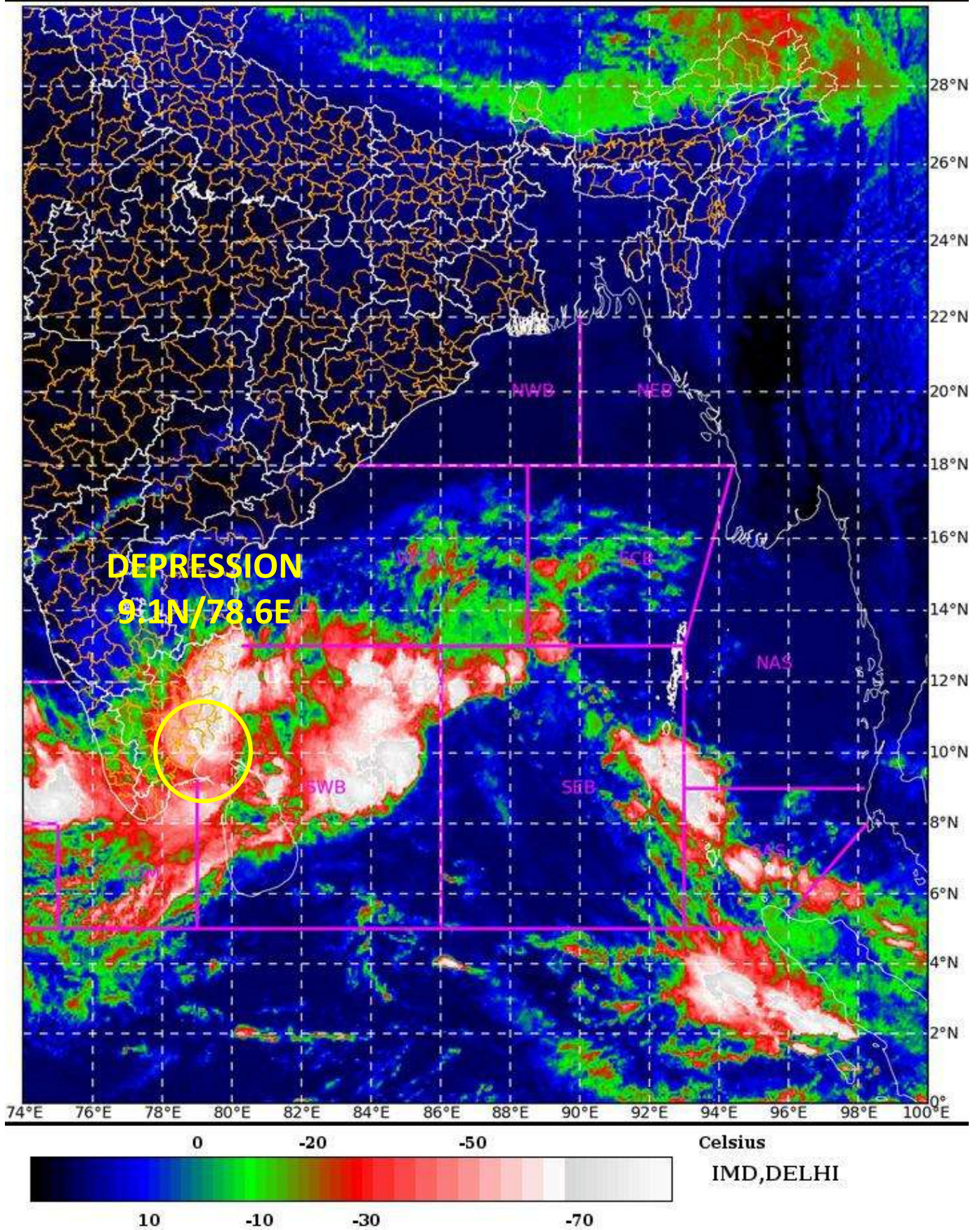
SAT : INSAT-3D IMG

05-12-2020/(0430 to 0457) GMT

IMG\_TIR1\_TEMP 10.8 um

05-12-2020/(1000 to 1027) IST

L1C Mercator



Contact: Cyclone Warning Division, Office of the Director General of Meteorology,  
India Meteorological Department, Ministry of Earth Sciences.

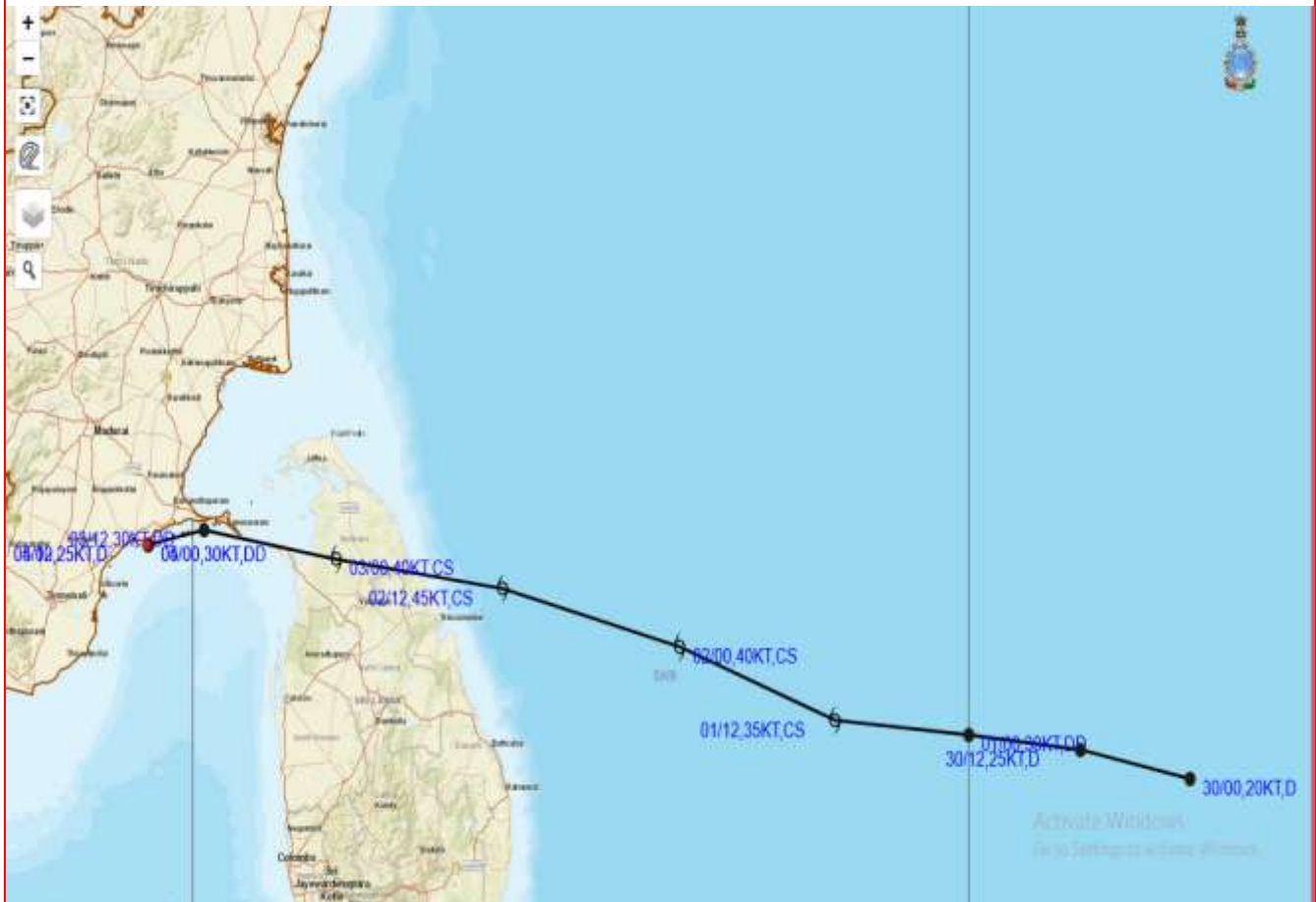
Phone: (91) 11-24652484, FAX: (91) 11-24643128, 24623220, E-mail: [cwdhq2008@gmail.com](mailto:cwdhq2008@gmail.com), Website: [rsmcnwdelhi.imd.gov.in](http://rsmcnwdelhi.imd.gov.in)

Spatial rainfall distribution: Isolated: <25%, A few: 26-50%, Many: 51-75%, Most: 76-100%

Rainfall amount (mm): Heavy rain: 64.5 – 115.5, Very heavy rain: 115.6 – 204.4, Extremely heavy rain: 204.5 or more.



## OBSERVED TRACK OF DEPRESSION OVER GULF OF MANNAR BASED ON 0300 UTC OF 5<sup>TH</sup> DECEMBER, 2020.



DATE/TIME IN UTC  
IST=UTC + 0530  
L: LOW PRESSURE AREA  
WML: WELL MARKED LOW PRESSURE AREA  
D: DEPRESSION (17-27 KT)  
DD: DEEP DEPRESSION (28-33 KT)  
CS: CYCLONIC STORM (34-47 KT)  
SCS: SEVERE CYCLONIC STORM (48-63KT)  
VSCS: VERY SEVERE CYCLONIC STORM (64-89 KT)  
ESCS: EXTREMELY SEVERE CYCLONIC STORM (90-119 KT)  
SuCS: SUPER CYCLONIC STORM ( $\geq$  120 KT)

● LESS THAN 34 KT  
○ 34-47 KT  
○  $\geq$  48 KT  
— OBSERVED TRACK  
— FORECAST TRACK  
▲ CONE OF UNCERTAINTY

Contact: Cyclone Warning Division, Office of the Director General of Meteorology,  
India Meteorological Department, Ministry of Earth Sciences.

Phone: (91) 11-24652484, FAX: (91) 11-24643128, 24623220, E-mail: [cwdhq2008@gmail.com](mailto:cwdhq2008@gmail.com), Website: [rsmcnwdelhi.imd.gov.in](http://rsmcnwdelhi.imd.gov.in)

Spatial rainfall distribution: Isolated: <25%, A few: 26-50%, Many: 51-75%, Most: 76-100%

Rainfall amount (mm): Heavy rain: 64.5 – 115.5, Very heavy rain: 115.6 – 204.4, Extremely heavy rain: 204.5 or more.