



Government of India  
Ministry of Earth Sciences



India Meteorological Department

### PRESS RELEASE-3

Time of issue: 1230 hours IST

Dated: 17<sup>th</sup> November, 2023

**Sub: Cyclonic Storm “Midhili” (pronounced as “Midhili”) over Northwest and adjoining Northeast Bay of Bengal**

Yesterday's deep depression over Westcentral Bay of Bengal moved north-northeastwards and intensified into the **Cyclonic Storm “Midhili” (pronounced as “Midhili”)** over Northwest Bay of Bengal in the morning (0530 hours IST) of today, the 17<sup>th</sup> November, 2023. Continuing to move further north-northeastwards it lay centered at 0830 hours IST of today, the 17<sup>th</sup> November over Northwest and adjoining Northeast Bay of Bengal near latitude 20.8°N and longitude 89.0°E, about 250 km east-northeast of Paradip (Odisha), 180 km east-southeast of Digha (West Bengal) and 180 km southwest of Khepupara (Bangladesh).

It is likely to continue to move north-northeastwards and cross Bangladesh coast close to Khepupara with wind speed of 60-70 kmph gusting to 80 kmph during night of 17<sup>th</sup> November, 2023.

*Forecast track and intensity are given below:*

Date/Time (IST)	Position (Lat. °N/ long. °E)	Maximum sustained surface wind speed (Kmph)	Category of cyclonic disturbance
17.11.23/0830	20.8/89.0	65-75 kmph gusting to 85 kmph	Cyclonic Storm
17.11.23/1130	21.3/89.5	70-80 kmph gusting to 90 kmph	Cyclonic Storm
17.11.23/1730	22.0/90.1	60-70 kmph gusting to 80 kmph	Cyclonic Storm
17.11.23/2330	22.6/90.6	55-65 kmph gusting to 75 kmph	Deep Depression
18.11.23/0530	23.2/91.2	40-50 kmph gusting to 60 kmph	Depression

#### Warnings:

##### **(i) Rainfall Warning (graphics enclosed):**

- Light to moderate rainfall at many places with isolated heavy rainfall is likely over coastal districts of West Bengal (North 24 Parganas) till evening of 17<sup>th</sup> November.
- Light to moderate rainfall at most places with isolated heavy to very heavy rainfall is likely over Nagaland, Manipur, Mizoram & Tripura on 17<sup>th</sup> & 18<sup>th</sup> November with **extremely heavy fall at isolated places over Mizoram & Tripura on 17<sup>th</sup> November.**
- Light to moderate rainfall at many places with isolated heavy rainfall is likely over south Assam and east Meghalaya on 17<sup>th</sup> & 18<sup>th</sup> November.

Contact: Cyclone Warning Division, Office of the Director General of Meteorology,  
India Meteorological Department, Ministry of Earth Sciences.

Phone:(91) 11-24652484, FAX: (91) 11-24643128, 24623220, E-mail:cwdhq2008@gmail.com, Website: [rsmcnewdelhi.ind.gov.in](http://rsmcnewdelhi.ind.gov.in)

Spatial rainfall distribution: Isolated: <25%, A few: 26-50%, Many: 51-75%, Most: 76-100%

Rainfall amount (mm): Heavy rain: 64.5 – 115.5, Very heavy rain: 115.6 – 204.4, Extremely heavy rain: 204.5 or more.

**(ii) Wind warning (graphics enclosed):**

- **North Bay of Bengal and along & off Bangladesh coast: Gale wind** speed reaching **65-75 kmph gusting to 85 kmph** is prevailing. It would become 70-80 kmph gusting to 90 kmph till afternoon. It would decrease gradually thereafter becoming **60-70 kmph gusting to 80 kmph** from 17<sup>th</sup> evening to midnight (during landfall) and decrease thereafter becoming Squally wind speed reaching **40-50 kmph gusting to 60 kmph** from morning of 18<sup>th</sup> November. It would decrease further thereafter.
- **Along & off West Bengal Coast: Squally wind speed reaching 50-60 kmph gusting to 70 kmph** is prevailing and would continue till midnight of 17<sup>th</sup> and decrease thereafter.
- **Strong wind** speed reaching **30-40 kmph gusting to 50 kmph** is likely over Tripura, Mizoram, Manipur and south Assam till 18<sup>th</sup> November evening.

**(iii) Sea Condition:**

- **High** sea condition is prevailing over North Bay of Bengal and along & off Bangladesh coast and is likely to continue till midnight of 17<sup>th</sup> November, very rough thereafter till morning of 18<sup>th</sup> November and very rough to rough till 18<sup>th</sup> November afternoon.
- **Rough to very rough** sea condition is likely along & off West Bengal coast till 18<sup>th</sup> November morning.

**(iv) Fishermen Warning:**

Fishermen are advised not to venture into

- North Bay of Bengal and along & off Bangladesh coast till 18<sup>th</sup> November afternoon
- Along & off West Bengal coast till 18<sup>th</sup> November morning.

**(v) Damage Expected & Action Suggested for coastal areas of West Bengal (North 24 Parganas) during next 12 hours:**

- Damage to thatched huts and loose/unsecured structures..
- Minor damage to power and communication lines due to breaking of branches.
- Major damage to Kutcha and minor damage to Pucca roads.
- Some damage to paddy crops, banana, papaya & drumstick trees and orchards.
- Sea water inundation in low lying areas after erosion of Kutcha embankments.
- Partial Damage to standing crops in coastal areas of west Bengal.
- Damages to Kutcha embankments.

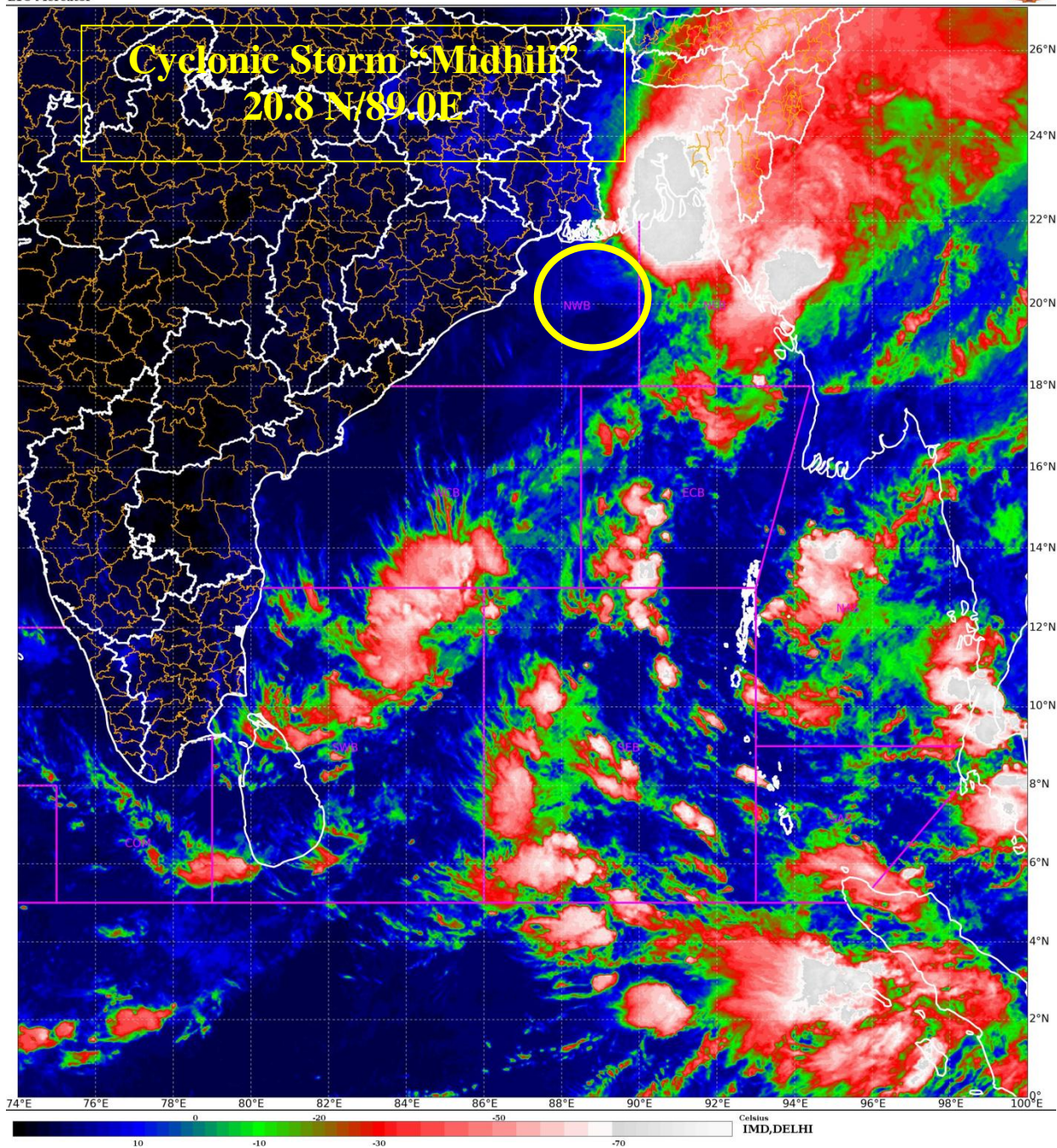
The system is under continuous surveillance and the next Press Release will be issued at 1430 hours IST of 18<sup>th</sup> November, 2023.

For regular updates kindly visit [www.rsmcnewdelhi.imd.gov.in](http://www.rsmcnewdelhi.imd.gov.in) and [www.mausam.imd.gov.in](http://www.mausam.imd.gov.in)



SAT : INSAT-3DR IMG  
 IMG\_TIR1\_TEMP 10.8 um  
 L1C Mercator

17-11-2023/(0445 to 0512) GMT  
 17-11-2023/(1015 to 1042) IST



Contact: Cyclone Warning Division, Office of the Director General of Meteorology,  
 India Meteorological Department, Ministry of Earth Sciences.

Phone:(91) 11-24652484, FAX: (91) 11-24643128, 24623220, E-mail:cwdhq2008@gmail.com, Website: [rsmcnewdelhi.imd.gov.in](https://rsmcnewdelhi.imd.gov.in)

Spatial rainfall distribution: Isolated: <25%, A few: 26-50%, Many: 51-75%, Most: 76-100%

Rainfall amount (mm): Heavy rain: 64.5 – 115.5, Very heavy rain: 115.6 – 204.4, Extremely heavy rain: 204.5 or more.





**OBSERVED AND FORECAST TRACK AND INTENSITY ALONGWITH CONE OF UNCERTAINTY IN ASSOCIATION WITH CYCLONIC STORM MIDHILI OVER NORTHWEST AND ADJOINING NORTHEAST BAY OF BENGAL BASED ON 0300 UTC (0830 HRS IST) OF 17TH NOVEMBER 2023.**



DATE/TIME IN UTC  
IST=UTC + 0530  
L: LOW PRESSURE AREA  
WML: WELL MARKED LOW PRESSURE AREA  
D: DEPRESSION (17-27 KT)  
DD: DEEP DEPRESSION (28-33 KT)  
CS: CYCLONIC STORM (34-47 KT)  
SCS: SEVERE CYCLONIC STORM (48-63KT)  
VSCS: VERY SEVERE CYCLONIC STORM (64-89 KT)  
ESCS: EXTREMELY SEVERE CYCLONIC STORM (90-119 KT)  
SuCS: SUPER CYCLONIC STORM (≥ 120 KT)

- LESS THAN 34 KT
- 34-47 KT
- ≥ 48 KT
- OBSERVED TRACK
- FORECAST TRACK
- CONE OF UNCERTAINTY

Forecast	DISTANCE (KM) AND DIRECTION FROM STATIONS			
Date and Time (UTC)	PARADIP (CWR)	DIGHA	KHEPUPARA	CHITTAGONG (AMBAGAN)
17.11.23/0300	270, SSE	410, S	540, SSW	680 SW
18.11.23/0000	570, NE	420, ENE	170, NE	110, NNW

Contact: Cyclone Warning Division, Office of the Director General of Meteorology,  
India Meteorological Department, Ministry of Earth Sciences.

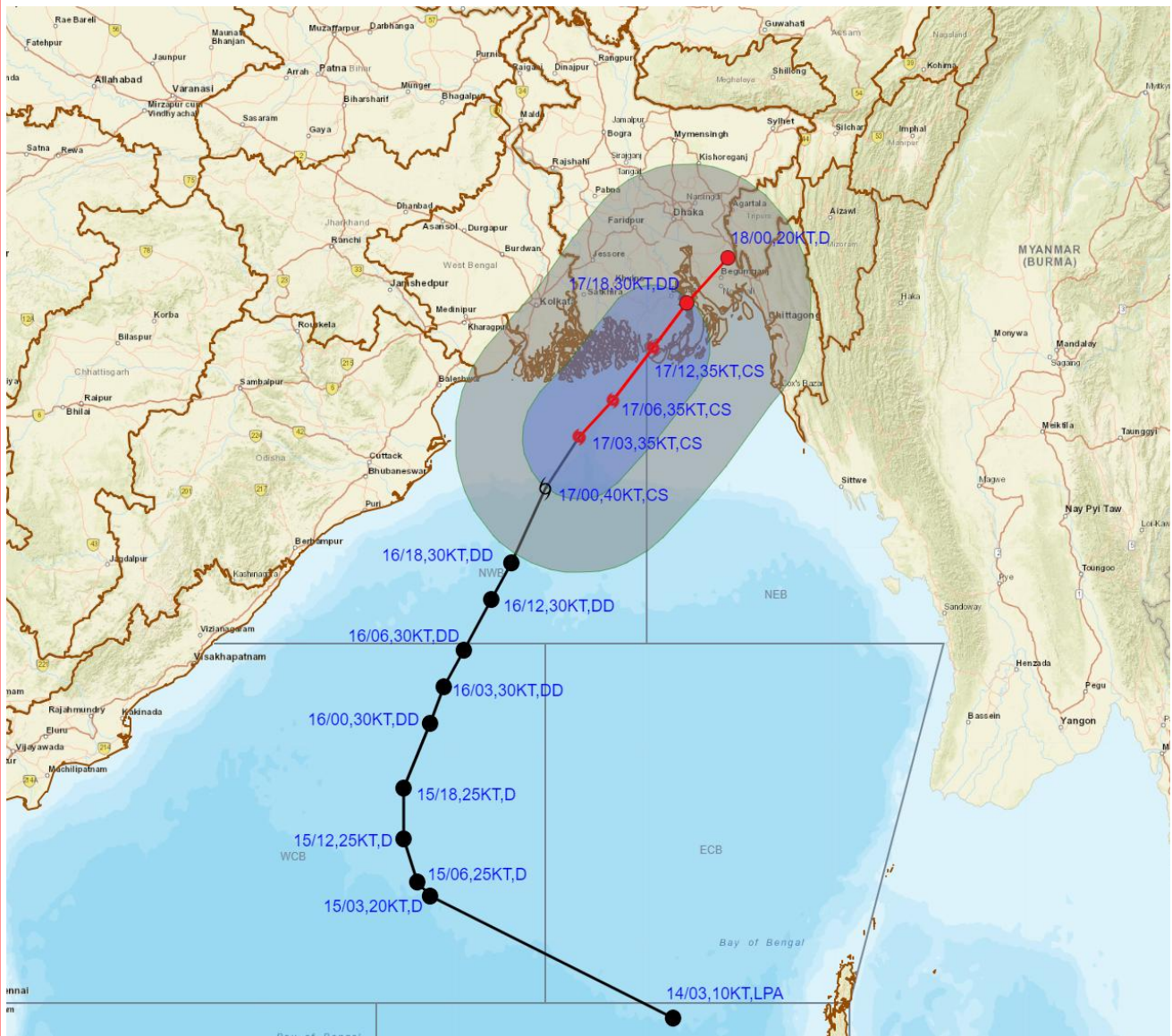
Phone:(91) 11-24652484, FAX: (91) 11-24643128, 24623220, E-mail:cwdhq2008@gmail.com, Website: [rsmcnewdelhi.ind.gov.in](http://rsmcnewdelhi.ind.gov.in)

Spatial rainfall distribution: Isolated: <25%, A few: 26-50%, Many: 51-75%, Most: 76-100%

Rainfall amount (mm): Heavy rain: 64.5 – 115.5, Very heavy rain: 115.6 – 204.4, Extremely heavy rain: 204.5 or more.



**OBSERVED AND FORECAST TRACK AND INTENSITY ALONG WITH QUADRANT WIND DISTRIBUTION IN ASSOCIATION WITH CYCLONIC STORM MIDHILI NORTHWEST AND ADJOINING NORTHEAST BAY OF BENGAL BASED ON 0300 UTC (0830 HRS IST) OF 17TH NOVEMBER 2023.**



**DATE/TIME IN UTC**  
**IST=UTC + 0530**

**L: LOW PRESSURE AREA**

**WML: WELL MARKED LOW PRESSURE AREA**

**D: DEPRESSION (17-27 KT)**

**DD: DEEP DEPRESSION (28-33 KT)**

**CS: CYCLONIC STORM (34-47 KT)**

**SCS: SEVERE CYCLONIC STORM (48-63KT)**

**VSCS: VERY SEVERE CYCLONIC STORM (64-89 KT)**

**ESCS: EXTREMELY SEVERE CYCLONIC STORM (90-119 KT)**

**SuCS: SUPER CYCLONIC STORM (≥ 120 KT)**

● LESS THAN 34 KT

○ 34-47 KT

● ≥ 48 KT

— OBSERVED TRACK

— FORECAST TRACK

▲ CONE OF UNCERTAINTY

**AREA OF MAXIMUM SUSTAINED WIND SPEED:**

■ 28-33 KT (52-61 KMPH)

■ 34-49 KT (62-91 KMPH)

■ 50-63 KT (92-117 KMPH)

■ ≥ 64 KT (≥ 118 KMPH)

**IMPACT OVER THE SEA**

MSW (knot/kmph)	Impact	Action
28-33 (52-61)	Very rough seas	Total suspension of fishing operations
34-49 (62-91)	High to very high seas	Total suspension of fishing operations
50-63 (92-117)	Very high seas	Total suspension of fishing operations
≥ 64 (≥ 118)	Phenomenal	Total suspension of fishing operations

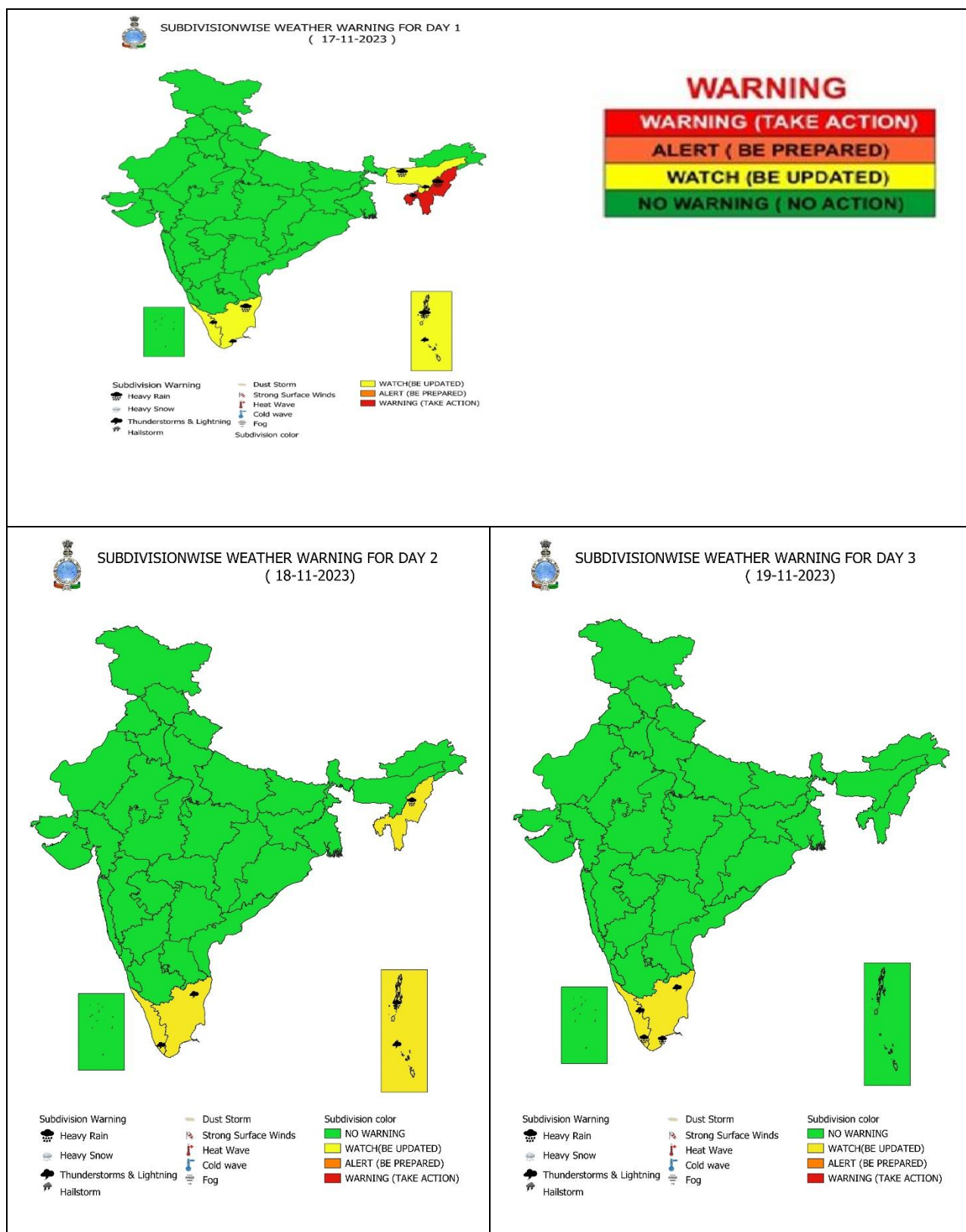
Phone: (91) 11-24652484, FAX: (91) 11-24643128, 24623220, E-mail: [cwdhq2008@gmail.com](mailto:cwdhq2008@gmail.com), Website: [smcnewdelhi.ind.gov.in](http://smcnewdelhi.ind.gov.in)

Spatial rainfall distribution: Isolated: <25%, A few: 26-50%, Many: 51-75%, Most: 76-100%

Rainfall amount (mm): Heavy rain: 64.5 – 115.5, Very heavy rain: 115.6 – 204.4, Extremely heavy rain: 204.5 or more.



## WEATHER WARNING GRAPHICS



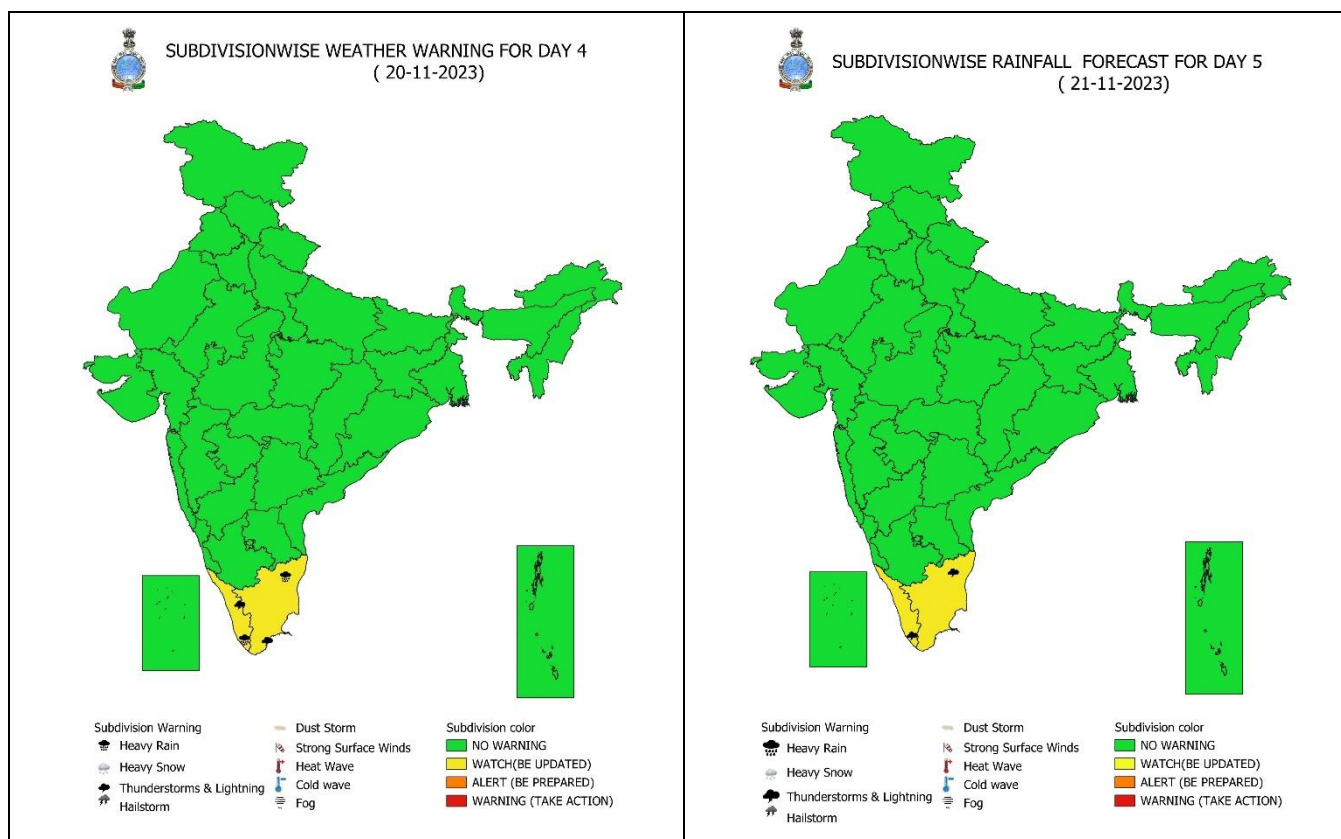
**Contact: Cyclone Warning Division, Office of the Director General of Meteorology,**

**India Meteorological Department, Ministry of Earth Sciences.**

**Phone:(91) 11-24652484, FAX: (91) 11-24643128, 24623220, E-mail:cwdhq2008@gmail.com, Website: [smcnewdelhi.ind.gov.in](http://smcnewdelhi.ind.gov.in)**

**Spatial rainfall distribution: Isolated: <25%, A few: 26-50%, Many: 51-75%, Most: 76-100%**

**Rainfall amount (mm): Heavy rain: 64.5 – 115.5, Very heavy rain: 115.6 – 204.4, Extremely heavy rain: 204.5 or more.**



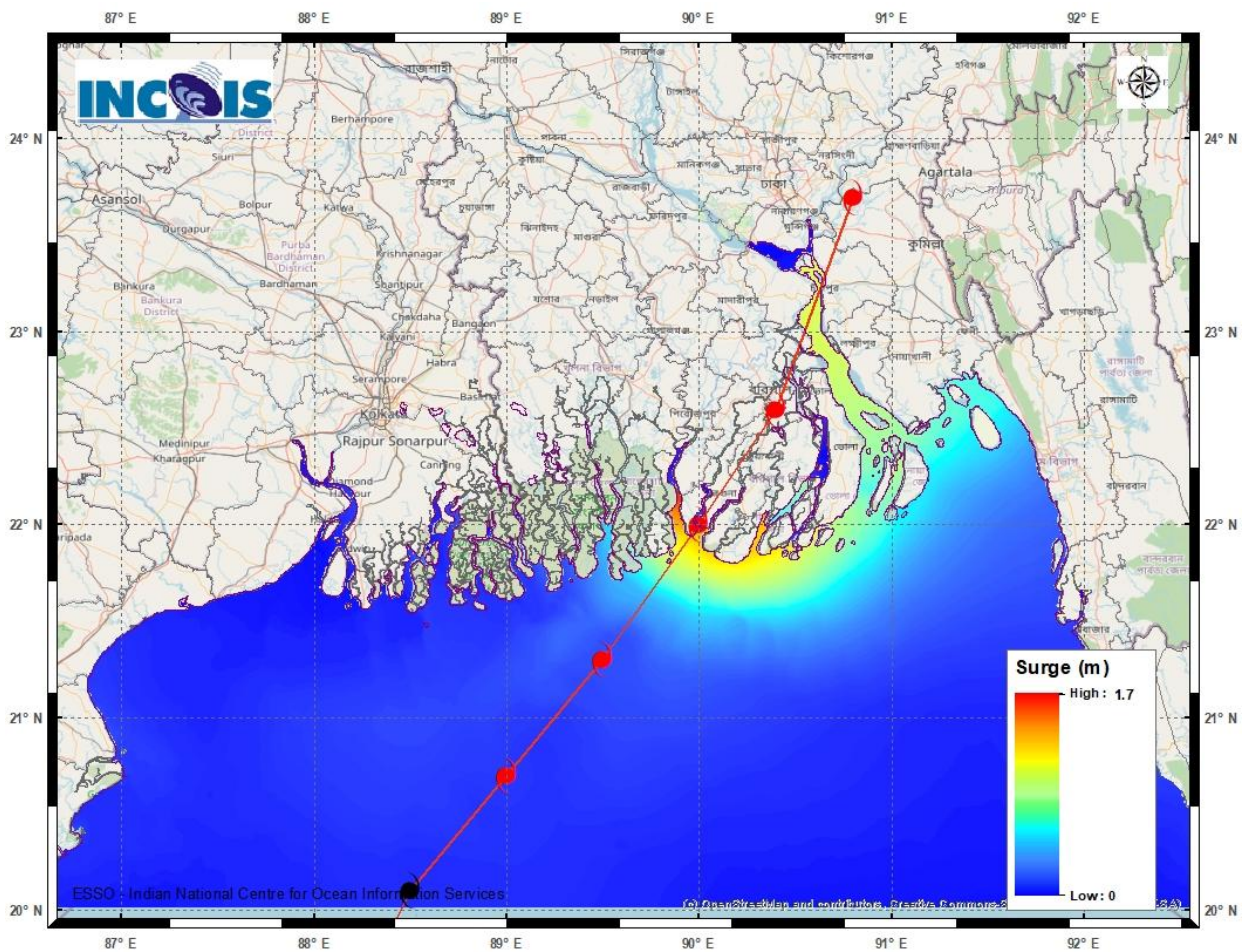
**Contact: Cyclone Warning Division, Office of the Director General of Meteorology,  
India Meteorological Department, Ministry of Earth Sciences.**

**Phone:(91) 11-24652484, FAX: (91) 11-24643128, 24623220, E-mail:cwdhq2008@gmail.com, Website: [rsmcnewdelhi.imd.gov.in](https://rsmcnewdelhi.imd.gov.in)**

**Spatial rainfall distribution: Isolated: <25%, A few: 26-50%, Many: 51-75%, Most: 76-100%**

**Rainfall amount (mm): Heavy rain: 64.5 – 115.5, Very heavy rain: 115.6 – 204.4, Extremely heavy rain: 204.5 or more.**

## STORM SURGE GUIDANCE



Contact: Cyclone Warning Division, Office of the Director General of Meteorology,  
India Meteorological Department, Ministry of Earth Sciences.

Phone:(91) 11-24652484, FAX: (91) 11-24643128, 24623220, E-mail:cwdhq2008@gmail.com, Website: [rsmcnewdelhi.ind.gov.in](http://rsmcnewdelhi.ind.gov.in)

Spatial rainfall distribution: Isolated: <25%, A few: 26-50%, Many: 51-75%, Most: 76-100%

Rainfall amount (mm): Heavy rain: 64.5 – 115.5, Very heavy rain: 115.6 – 204.4, Extremely heavy rain: 204.5 or more.

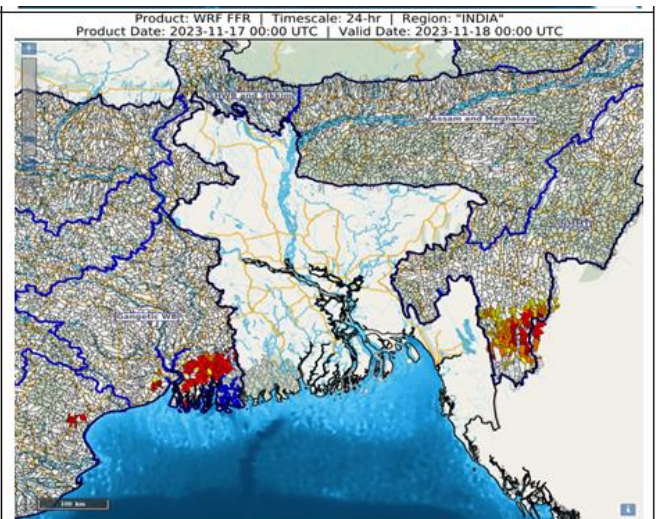


## FLASH FLOOD GUIDANCE

### **24 hours Outlook for the Flash Flood Risk (FFR) till 0530 IST of 18-11-2023 :**

Moderate flash flood risk likely over few watersheds & neighbourhoods of NMMT and Gangetic West Bengal Met Sub-divisions during next 24 hours.

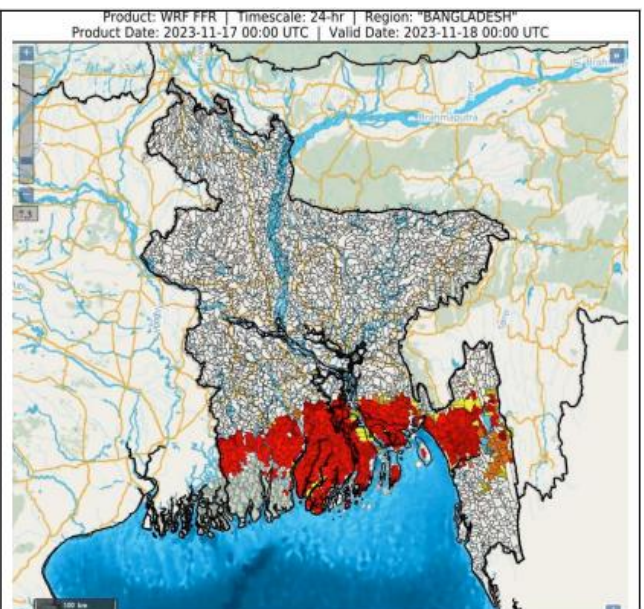
Surface runoff/ Inundation may occur at some fully saturated soils & low-lying areas over AoC as shown in map due to expected rainfall occurrence in next 24 hours.



### **24 hours Flash Flood Risk Outlook till 00 UTC of 18.11.2023:**

Moderate flash flood risk likely over few watersheds & neighbourhoods of Southern parts of Bangladesh for next 24 hours.

Surface runoff/ Inundation may occur at some fully saturated soils & low-lying areas over AoC as shown in map due to expected rainfall occurrence in next 24 hours.



#### **Flash Flood Risk**

 **High Risk (Take Action)**

 **Moderate Risk (Be Prepared)**

 **Low Risk (Be Updated)**

Contact: Cyclone Warning Division, Office of the Director General of Meteorology,  
India Meteorological Department, Ministry of Earth Sciences.

Phone:(91) 11-24652484, FAX: (91) 11-24643128, 24623220, E-mail:cwdhq2008@gmail.com, Website: [rsmcnewdelhi.ind.gov.in](http://rsmcnewdelhi.ind.gov.in)

Spatial rainfall distribution: Isolated: <25%, A few: 26-50%, Many: 51-75%, Most: 76-100%

Rainfall amount (mm): Heavy rain: 64.5 – 115.5, Very heavy rain: 115.6 – 204.4, Extremely heavy rain: 204.5 or more.

## Fishermen warning graphics



Contact: Cyclone Warning Division, Office of the Director General of Meteorology,

India Meteorological Department, Ministry of Earth Sciences.

Phone:(91) 11-24652484, FAX: (91) 11-24643128, 24623220, E-mail:cwdhq2008@gmail.com, Website: [rsmcnewdelhi.ind.gov.in](http://rsmcnewdelhi.ind.gov.in)

Spatial rainfall distribution: Isolated: <25%, A few: 26-50%, Many: 51-75%, Most: 76-100%

Rainfall amount (mm): Heavy rain: 64.5 – 115.5, Very heavy rain: 115.6 – 204.4, Extremely heavy rain: 204.5 or more.