



Government of India
Ministry of Earth Sciences



India Meteorological Department

PRESS RELEASE - 7

Time of issue: 1330 hours IST

Dated: 13-10-2020

Sub: Deep Depression crossed north Andhra Pradesh coast close to Kakinada, today morning and lay over north coastal Andhra Pradesh

Yesterday's deep depression over westcentral Bay of Bengal moved west-northwestwards and **crossed north Andhra Pradesh coast close to Kakinada (near latitude 17.0°N & longitude 82.4° E) between 0630 & 0730 Hrs IST of today, the 13th October 2020, as a Deep Depression with maximum sustained wind speed of 55-65 kmph gusting to 75 kmph.** Moving west- northwestwards further, it lay centred at 0830 hrs IST of today, the 13th October, 2020 near latitude 17.0°N and longitude 82.1°E, about 15 km west-northwest of Kakinada (Andhra Pradesh) and 200 km east-southeast of Khammam (Telangana).

It is very likely to move west-northwestwards and weaken into a Depression during next 06 hours and further weaken into a Well marked low Pressure area during the subsequent 12 hours.

Realised rainfall during past 24 hours from 0830 hours of 12th October to 0830 hours of 13th October is given in Annexure 1.

Forecast track and intensity are given in the following table:

Date/Time(IST)	Position (Lat. °N/ long. °E)	Maximum sustained surface wind speed (Kmph)	Category of cyclonic disturbance
13.10.20/0830	17.0/82.1	55-65 gusting to 75	Deep Depression
13.10.20/1130	17.3/81.4	45-55 gusting to 65	Depression
13.10.20/1730	17.6/80.3	40-50 gusting to 60	Depression
13.10.20/2330	17.9/79.2	25-35 gusting to 45	Well marked low

Warnings:

(i) Rainfall warning

- ✓ **13th October 2020:** Light to moderate rainfall at most places with **heavy to very heavy falls** at a few places and **Extremely heavy rainfall (>20 cm per day)** at isolated places would occur over Telangana and adjoining Districts of north Interior Karnataka; heavy to very heavy falls at isolated places over coastal & remaining districts of north interior Karnataka, south Konkan & Goa, Madhya Maharashtra & Marathawada and heavy falls at isolated places over north Andhra Pradesh, Rayalaseema, south interior Karnataka, south Odisha, south Chhattisgarh and Vidarbha.
- ✓ **14th October 2020:** Light to moderate rainfall at most places with **heavy to very heavy falls** at a few places and **Extremely heavy rainfall (>20 cm per day)** at isolated places would occur over Madhya Maharashtra, **heavy to very heavy falls** at isolated places over Konkan & Goa, north interior Karnataka and Marathawada and heavy falls at isolated places over coastal & south interior Karnataka.

(ii) Wind warning

- ✓ **13th October 2020:** Squally wind speed reaching 55-65 kmph gusting to 75 kmph very likely to prevail over west central Bay of Bengal and along & off Andhra Pradesh coasts during next 3 hours

Contact: Cyclone Warning Division, Office of the Director General of Meteorology,
India Meteorological Department, Ministry of Earth Sciences.

Phone: (91) 11-24652484, FAX: (91) 11-24643128, 24623220, E-mail: cwdhq2008@gmail.com, Website: rsmcnewdelhi.imd.gov.in

Spatial rainfall distribution: Isolated: <25%, A few: 26-50%, Many: 51-75%, Most: 76-100%

Rainfall amount (mm): Heavy rain: 64.5 – 115.5, Very heavy rain: 115.6 – 204.4, Extremely heavy rain: 204.5 or more.

and gradually decrease thereafter becoming 40-50 kmph gusting to 60 kmph during subsequent 06 hours. Wind speed reaching 40-50 kmph gusting to 60 kmph likely to prevail along and off south Odisha, Tamilnadu & Puducherry coasts and adjoining areas of southwest & northwest Bay of Bengal during next 06 hours and decrease thereafter.

(iii) Sea condition

- ✓ Sea condition will be rough to very rough over westcentral & adjoining northwest Bay of Bengal, southwest Bay of Bengal and along & off Odisha-Andhra Pradesh-Tamil Nadu & Puducherry coasts till 13th October noon and over Gulf of Mannar during 13th & 14th October 2020.

(iv) Fishermen Warning

- ✓ Fishermen are advised not to venture into westcentral, northwest & southwest Bay of Bengal, and along & off Andhra Pradesh-Odisha-Tamil Nadu & Puducherry coasts till 13th October noon and over Gulf of Mannar during 13th & 14th October 2020.

(v) Damage expected

(a) East & West Godavari, Vishakhapatnam, Vijayanagaram, Srikakulam & Krishna districts of north coastal Andhra Pradesh and Yanam

- ✓ Damage to thatched huts. Breaking of branches. Some breaches in Kutcha road due to heavy rainfall.
- ✓ Some damage to paddy crops, banana, papaya trees and orchards & drumstick trees and Horticultural crops. Minor damage to coastal agriculture due to salt spray. Minor damage to Kutcha embankments due to heavy rain.

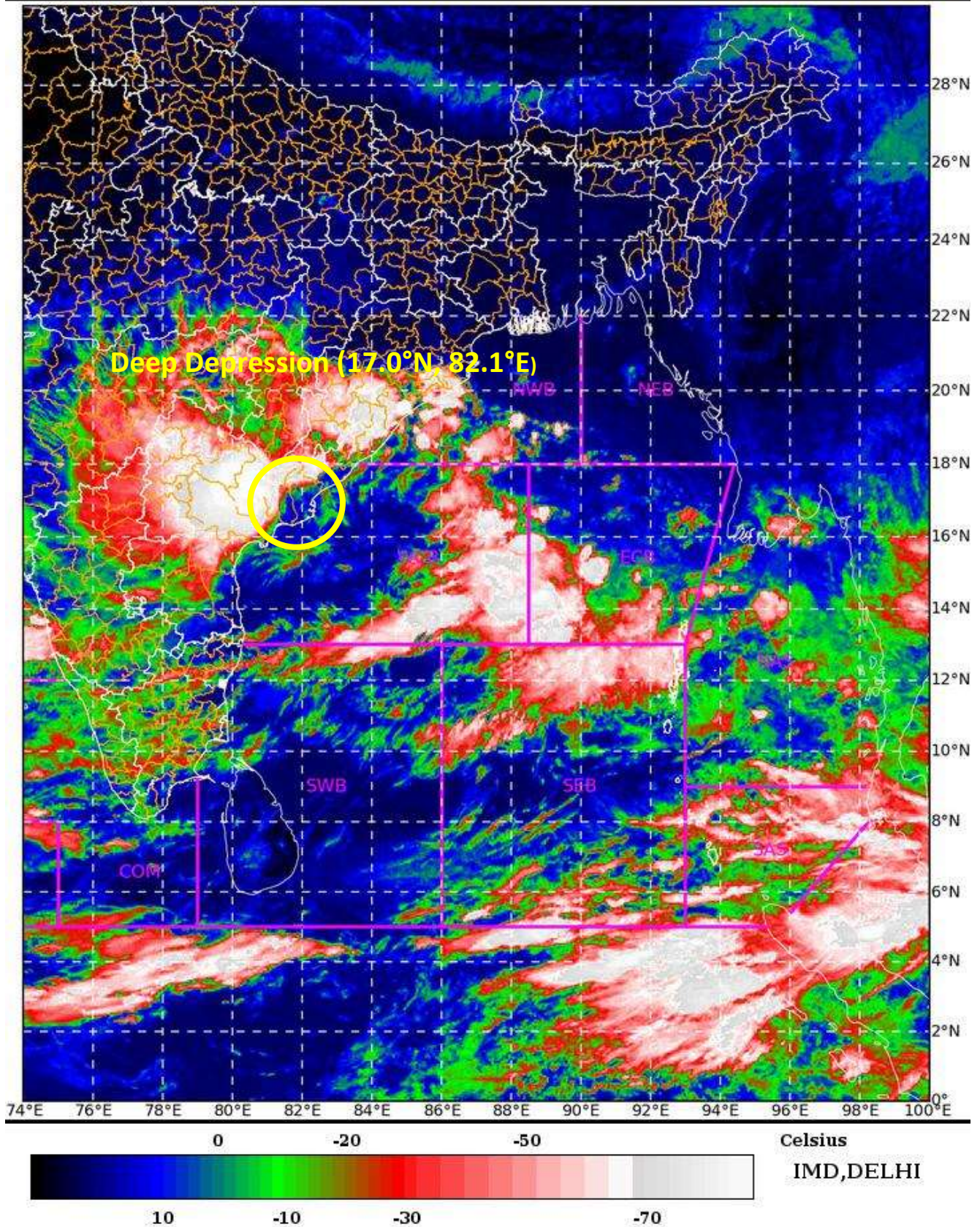
(b) Telangana and adjoining districts of north interior Karnataka

- ✓ Some damage to paddy crops, banana, papaya trees and orchards & drumstick trees and Horticultural crops. Minor damage to coastal agriculture due to salt spray. Minor damage to Kutcha embankments due to heavy rain.

The system is under continuous surveillance and the concerned state governments are being informed regularly.

For details kindly visit www.rsmcnewdelhi.imd.gov.in, www.imd.gov.in

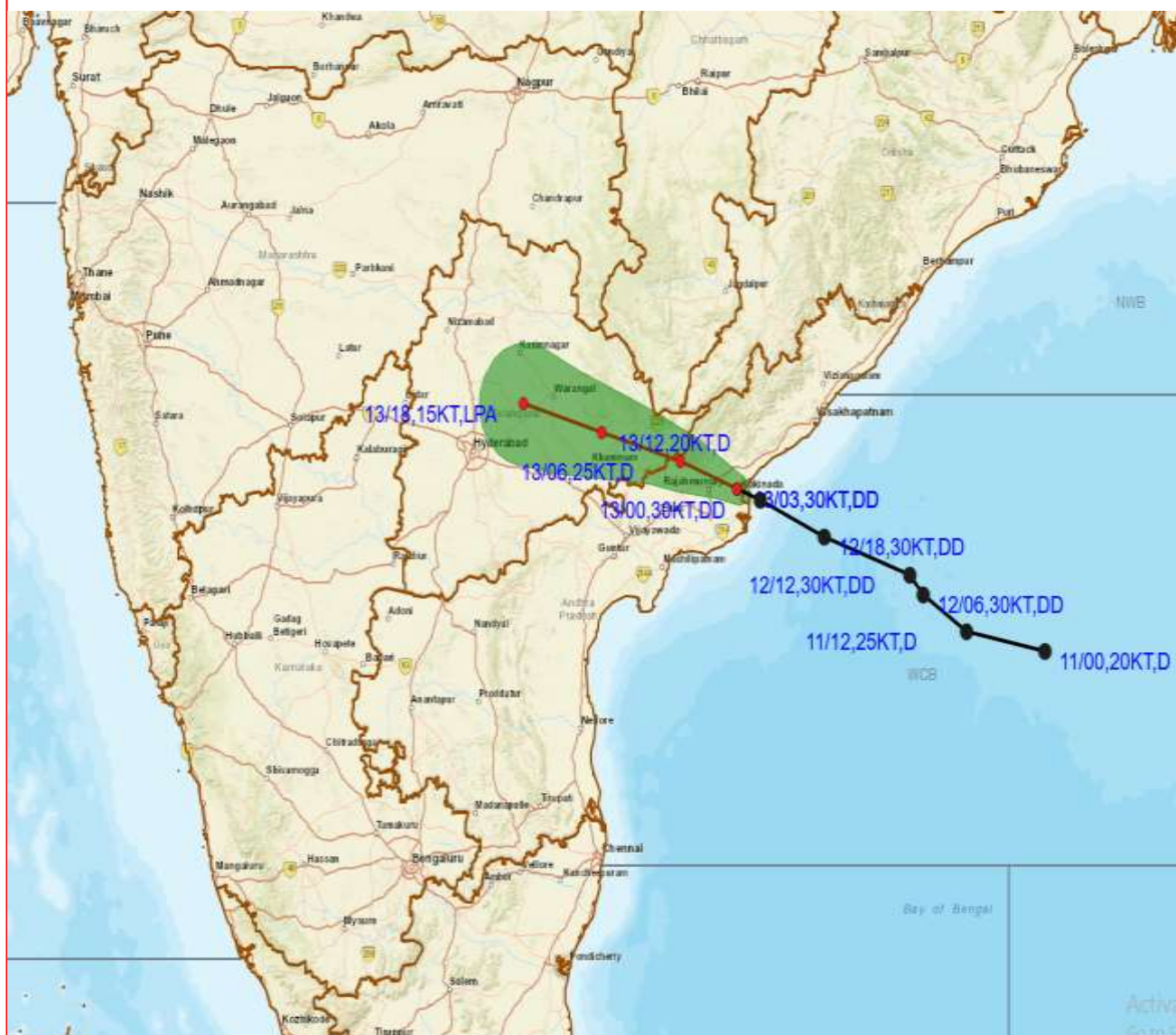
SAT : INSAT-3DR IMG 13-10-2020/(0345 to 0412) GMT
IMG_TIR1_TEMP 10.8 um 13-10-2020/(0915 to 0942) IST
L1C Mercator



Contact: Cyclone Warning Division, Office of the Director General of Meteorology,
India Meteorological Department, Ministry of Earth Sciences.
Phone: (91) 11-24652484, FAX: (91) 11-24643128, 24623220, E-mail: cwdhq2008@gmail.com, Website: rsmcnewdelhi.imd.gov.in
Spatial rainfall distribution: Isolated: <25%, A few: 26-50%, Many: 51-75%, Most: 76-100%
Rainfall amount (mm): Heavy rain: 64.5 – 115.5, Very heavy rain: 115.6 – 204.4, Extremely heavy rain: 204.5 or more.



**OBSERVED AND FORECAST TRACK ALONGWITH CONE OF
UNCERTAINTY OF DEEP DEPRESSION OVER NORTH COASTAL ANDHRA
PRADESH BASED ON 0300 UTC OF 13TH OCT, 2020**



DATE/TIME IN UTC

IST=UTC + 0530

L: LOW PRESSURE AREA

WML: WELL MARKED LOW PRESSURE AREA

D: DEPRESSION (17-27 KT)

DD: DEEP DEPRESSION (28-33 KT)

CS: CYCLONIC STORM (34-47 KT)


SCS: SEVERE CYCLONIC STORM (48-63KT)


VSCS: VERY SEVERE CYCLONIC STORM (64-89 KT)

ESCS: EXTREMELY SEVERE CYCLONIC STORM (90-119 KT)

SuCS: SUPER CYCLONIC STORM (≥20 KT)


 LESS THAN 34 KT

 34-47 KT

 ≥ 48 KT

 OBSERVED TRACK

 FORECAST TRACK

 CONE OF UNCERTAINTY

Contact: Cyclone Warning Division, Office of the Director General of Meteorology,
India Meteorological Department, Ministry of Earth Sciences.

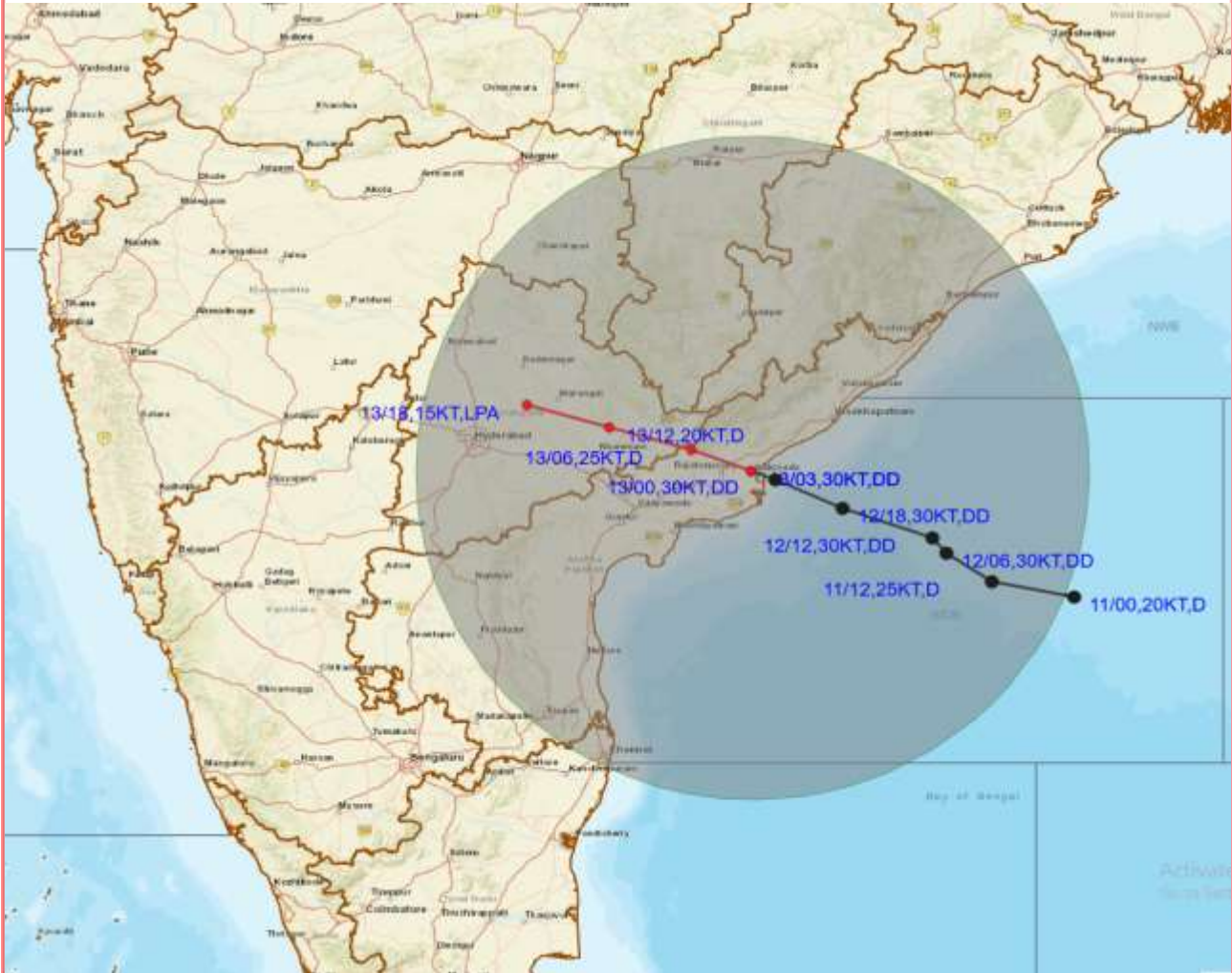
Phone: (91) 11-24652484, FAX: (91) 11-24643128, 24623220, E-mail: cwdhq2008@gmail.com, Website: rsmcnewdelhi.imd.gov.in

Spatial rainfall distribution: Isolated: <25%, A few: 26-50%, Many: 51-75%, Most: 76-100%

Rainfall amount (mm): Heavy rain: 64.5 – 115.5, Very heavy rain: 115.6 – 204.4, Extremely heavy rain: 204.5 or more.



OBSERVED AND FORECAST TRACK ALONGWITH QUADRANT WIND DISTRIBUTION OF DEEP DEPRESSION OVER NORTH COASTAL ANDHRA PRADESH BASED ON 0300 UTC OF 13TH OCT, 2020



DATE/TIME IN UTC
 IST=UTC + 0530
 L: LOW PRESSURE AREA
 WML: WELL MARKED LOW PRESSURE AREA
 D: DEPRESSION (17-27 KT)
 DD: DEEP DEPRESSION (28-33 KT)
 CS: CYCLONIC STORM (34-47 KT)
 SCS: SEVERE CYCLONIC STORM (48-63KT)
 VSCS: VERY SEVERE CYCLONIC STORM (64-89 KT)
 ESCS: EXTREMELY SEVERE CYCLONIC STORM (90-119 KT)
 SuCS: SUPER CYCLONIC STORM (≥ 20 KT)

● LESS THAN 34 KT
 ○ 34.47 KT
 ● ≥ 48 KT
 — OBSERVED TRACK
 — FORECAST TRACK
 ● CONE OF UNCERTAINTY
 AREA OF MAXIMUM SUSTAINED WIND SPEED:
 ■ 28-33 KT (52-61 KMPH)
 ■ 34-49 KT (62-91 KMPH)
 ■ 50-63 KT (92-117 KMPH)
 ■ ≥ 64 KT (≥ 118 KMPH)

IMPACT OVER THE SEA

MSW (knot/kmph)	Impact	Action
28-33 (52-61)	Very rough seas	Total suspension of fishing operations
34-49 (62-91)	High to very high seas	Total suspension of fishing operations
50-63 (92-117)	Very high seas	Total suspension of fishing operations
≥ 64 (≥ 118)	Phenomenal	Total suspension of fishing operations

Contact: Cyclone Warning Division, Office of the Director General of Meteorology,
 India Meteorological Department, Ministry of Earth Sciences.
 Phone: (91) 11-24652484, FAX: (91) 11-24643128, 24623220, E-mail: cwdhq2008@gmail.com, Website: rsmcnewdelhi.imd.gov.in
 Spatial rainfall distribution: Isolated: <25%, A few: 26-50%, Many: 51-75%, Most: 76-100%
 Rainfall amount (mm): Heavy rain: 64.5 – 115.5, Very heavy rain: 115.6 – 204.4, Extremely heavy rain: 204.5 or more.

Realised rainfall (cm) during past 24 hours from 0830 hours of 12th October to 0830 hours of 13th October is presented below:

Coastal Andhra Pradesh:

Yanam-25; Amalapuram, Tanuku & Nuzbid-19 each; Tadepalligudem-18; Vijaywada & Bheemunipatnam-16 each; Kaikalur, Palasa, Ichchapuram & Tiruvuru-15 each; Velamanchili-14; Chintalapudi, Sompeta, Gudibada & Mandasa-13 each; Narsapuram, Kakinada, Parthipadu, Koyalagudem, Palakoderu & Bhimavaram-12 each; Peddapuram, Bhimadole, Narsipatnam & Eluru-11 each; Tuni-10; Nandigama, Bondapalle, Anakapalle, Chodavaram & Vepada-9 each; Vishakhapatnam, Vararamachandrapur, Therlam, Kukunoor, Paderu, Pathapatnam & Pusapatirega-8 each and Palakonda, Velairpad, Denkada, Ranastalam, Parvathipuram, Manglagiri, Nellimerla, Mentada, Gajpathinagaram, Gargudilli, Kolavaram, Merakamudidam, Kalingapatnam, Garibidi & Kunavaram-7 each.

Telangana:

Sathupalle-19, Mahabubabad-13, Madhira-11, Bayyaram & Chandrugonda-10 each, Thimmajipeta-9, Thollada, Thollada & Tupran-8 each and Chandur, Devarakonda & Wanaparthy-7 each

Odisha:

Mohana-14, Paralakhemundi-12, Nuagada-11, Berhampur-10, Aska-10, Kashinagar & Purushottampur-9 each, Mahendragarh & Chhatrapur-8 each, Rudaigiri & Gunupur-7 each