



**Government of India
Ministry of Earth Sciences**



India Meteorological Department

PRESS RELEASE

Time of issue: 1320 hours IST

Dated: 02-12-2019

Sub: (i) Well Marked Low pressure area over southwest Arabian Sea & adjoining equatorial Indian Ocean and its likely intensification into a Cyclonic Storm

(ii) Low pressure area over southeast Arabian Sea & adjoining Lakshadweep area

A) Weather systems:

- (i) Yesterday's low pressure area over Equatorial Indian Ocean and adjoining Southwest Arabian Sea became a Well Marked Low pressure area over Southwest Arabian Sea and adjoining Equatorial Indian Ocean in the early morning of today, the 02nd December, 2019 and it persists over the same region at 0830 hours IST. It is very likely to concentrate into a Depression during next 12 hours and intensify gradually into a Cyclonic Storm during subsequent 48 hours. It is very likely to move west-northwestwards towards Somalia coast during next 72 hours.
- (ii) Yesterday's Low Pressure Area over Southeast Arabian Sea and adjoining Lakshadweep Area lies over Lakshadweep Area and adjoining Southeast Arabian Sea. It is likely to become more marked during next 24 hours and concentrate into a Depression during subsequent 24 hours.

B) Warnings:

(i) Heavy rainfall warnings:

- Lakshadweep: Light to moderate rainfall at most places with heavy to very heavy falls at isolated places during next 24 hours and Light to moderate rainfall at many places with isolated heavy falls during subsequent 24 hours and reduce thereafter.
- Kerala: Light to moderate rainfall at most places with heavy to very heavy falls at isolated places during next 24 hours.
- Tamil Nadu, Puducherry & Karaikal: Light to moderate rainfall at many places with heavy to very heavy falls over interior Tamil Nadu during next 24 hours and light to moderate rainfall at a few places with heavy falls at isolated places over south coastal Tamil Nadu during the subsequent 24 hours. Rainfall activity to further reduce thereafter.
- Coastal & south Interior Karnataka: Light to moderate rainfall at most places and heavy falls at isolated places during next 24 hours.

(ii) Wind warning for fishermen (advised not to venture into the Sea areas as specified below):

02.12.2019: Squally weather (wind speed 40-50 kmph gusting to 60 kmph) very likely to prevail over southwest Arabian Sea, Lakshadweep area & adjoining southeast Arabian Sea, along & off

**Contact: Cyclone Warning Division, Office of the Director General of Meteorology,
India Meteorological Department, Ministry of Earth Sciences.**

Phone: (91) 11-24652484, FAX: (91) 11-24643128, 24623220, E-mail: cwdhq2008@gmail.com, Website: rsmcnewdelhi.imd.gov.in

Spatial rainfall distribution: Isolated: <25%, A few: 26-50%, Many: 51-75%, Most: 76-100%

Rainfall amount (mm): Heavy rain: 64.5 – 115.5, Very heavy rain: 115.6 – 204.4, Extremely heavy rain: 204.5 or more.

Kerala & Karnataka coasts, Comorin-Maldives areas, Gulf of Mannar, and southwest Bay of Bengal along and off south Tamilnadu coast.

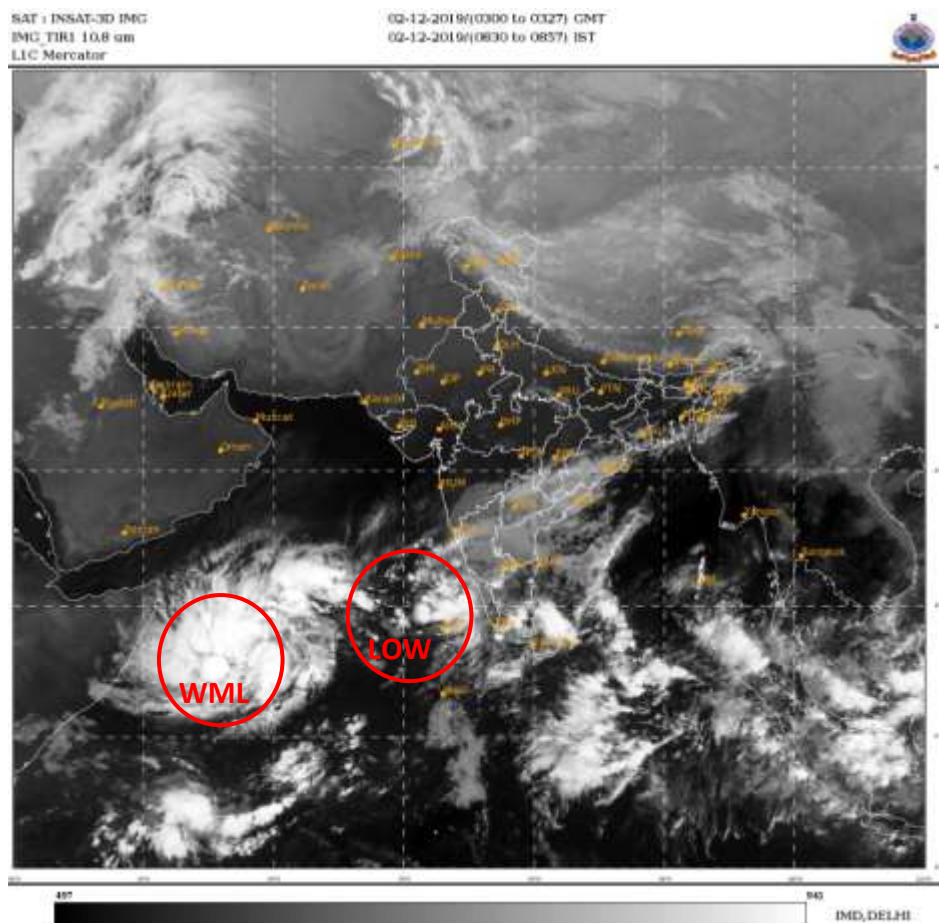
03.12.2019: Squally weather (wind speed 50-60 kmph gusting to 70 kmph) very likely to prevail over southwest Arabian Sea and along & off Somalia coast; Squally weather (wind speed 40-50 kmph gusting to 60 kmph) very likely to prevail over Lakshadweep area, southeast & adjoining eastcentral Arabian Sea and along & off Karnataka coast.

04.12.2019: Gale wind speed reaching 60-70 kmph gusting to 80 kmph, likely to prevail over southwest Arabian Sea and along & off Somalia coast; Squally weather (wind speed 40-50 kmph gusting to 60 kmph) likely to prevail over eastcentral Arabian Sea and along & off Maharashtra coast.

05.12.2019: Gale wind speed reaching 70-80 kmph gusting to 90 kmph, likely to prevail over southwest Arabian Sea and along & off Somalia coast.

06.12.2019: Gale wind speed reaching 60-70 kmph gusting to 80 kmph, likely to prevail over southwest Arabian Sea and along & off Somalia coast.

Kindly visit www.imd.gov.in for updates



Contact: Cyclone Warning Division, Office of the Director General of Meteorology,
India Meteorological Department, Ministry of Earth Sciences.

Phone: (91) 11-24652484, FAX: (91) 11-24643128, 24623220, E-mail: cwdhq2008@gmail.com, Website: rsmcnewdelhi.imd.gov.in

Spatial rainfall distribution: Isolated: <25%, A few: 26-50%, Many: 51-75%, Most: 76-100%

Rainfall amount (mm): Heavy rain: 64.5 – 115.5, Very heavy rain: 115.6 – 204.4, Extremely heavy rain: 204.5 or more.