



Government of India  
Ministry of Earth Sciences



India Meteorological Department

## PRESS RELEASE -4

Time of issue: 1230 hours IST

Dated: 16-05-2020

### Sub: Depression over southeast Bay of Bengal and its likely intensification into a Cyclonic Storm: Pre-cyclone Watch for West Bengal and North Odisha coasts (Yellow Message)

Yesterday's well marked low pressure area concentrated into a depression in the early morning of today and lay centered at 0830 hrs IST of today, the 16<sup>th</sup> May, 2020 over southeast Bay of Bengal (BoB) near latitude 10.7°N and longitude 86.5°E, about 1060 km south of Paradip (Odisha), 1220 km south-southwest of Digha (West Bengal) and 1310 km south-southwest of Khepupara (Bangladesh).

It is very likely to intensify rapidly into a Cyclonic Storm during next 12 hours and further into a severe cyclonic storm during subsequent 24 hours. It is very likely to move north-northwestwards initially till 17<sup>th</sup> May and then re-curve north-northeastwards across northwest Bay of Bengal towards West Bengal coast during 18<sup>th</sup> to 20<sup>th</sup> May 2020.

Forecast track and intensity are given in the following table:

Date/Time(IST)	Position (Lat. °N/ long. °E)	Maximum sustained surface wind speed (Kmph)	Category of cyclonic disturbance
16.05.20/0830	10.7/86.5	45-55 gusting to 65	Depression
16.05.20/1130	10.9/86.3	50-60 gusting to 70	Deep Depression
16.05.20/1730	11.2/86.2	60-70 gusting to 80	Cyclonic Storm
16.05.20/2330	11.8/86.1	75-85 gusting to 95	Cyclonic Storm
17.05.20/0530	12.3/86.0	90-100 gusting to 110	Severe Cyclonic Storm
17.05.20/1730	13.4/86.0	100-110 gusting to 120	Severe Cyclonic Storm
18.05.20/0530	14.3/86.1	120-130 gusting to 145	Very Severe Cyclonic Storm
18.05.20/1730	15.4/86.2	135-145 gusting to 160	Very Severe Cyclonic Storm
19.05.20/0530	16.6/86.3	155-165 gusting to 180	Very Severe Cyclonic Storm
19.05.20/1730	18.2/86.7	170-180 gusting to 200	Extremely Severe Cyclonic Storm
20.05.20/0530	19.8/87.3	160-170 gusting to 190	Extremely Severe Cyclonic Storm
20.05.20/1730	21.8/87.9	145-155 gusting to 170	Very Severe Cyclonic Storm
21.05.20/0530	24.0/88.5	110-120 gusting to 135	Severe Cyclonic Storm

### Warnings:

#### (i) Rainfall warning

##### • Rainfall (over Andaman & Nicobar Islands)

Light to moderate rainfall at most places with heavy falls at isolated places is very likely over Andaman & Nicobar Islands on 16<sup>th</sup> May.

##### • Rainfall (over Odisha & Gangetic West Bengal)

- Coastal Odisha is likely to experience light to moderate rainfall at many places with heavy falls at isolated places from 18<sup>th</sup> May evening, heavy to very heavy rainfalls at a few places on 19<sup>th</sup> May and isolated heavy rainfall over northeast Odisha on 20<sup>th</sup> May 2020.
- Coastal districts of Gangetic West Bengal are likely to experience light to moderate rainfall at many places with heavy falls at a few places on 19<sup>th</sup> May, heavy to very heavy falls at a few places with extremely heavy falls at isolated places over Gangetic West Bengal on 20<sup>th</sup> May.

Contact: Cyclone Warning Division, Office of the Director General of Meteorology, India Meteorological Department, Ministry of Earth Sciences.

Phone: (91) 11-24652484, FAX: (91) 11-24643128, 24623220, E-mail: cwdhq2008@gmail.com, Website: [rsmcnewdelhi.imd.gov.in](http://rsmcnewdelhi.imd.gov.in)

Spatial rainfall distribution: Isolated: <25%, A few: 26-50%, Many: 51-75%, Most: 76-100%

Rainfall amount (mm): Heavy rain: 64.5 – 115.5, Very heavy rain: 115.6 – 204.4, Extremely heavy rain: 204.5 or more.

### **(ii) Wind warning**

- Squally wind speed reaching 45 to 55 kmph gusting to 65 kmph is likely along and off Odisha coast from 19<sup>th</sup> morning and along and off West Bengal coast from 19<sup>th</sup> afternoon. The wind speed will gradually increase becoming gale wind speed reaching 75 to 85 kmph gusting to 95 kmph from 20<sup>th</sup> morning along and off north Odisha and West Bengal coast. It will gradually increase thereafter.
- Squally wind speed reaching 45 to 55 kmph gusting to 65 kmph is likely over Andaman Sea during next 48 hours.
- Squally wind speed reaching 45 to 55 kmph gusting to 65 kmph is prevailing over southeast and adjoining southwest BoB. It is likely to increase becoming 90-100 gusting to 110 kmph over eastcentral & adjoining westcentral BoB by 17<sup>th</sup> morning, 120-130 gusting to 145 kmph over southern parts of central BoB by 18<sup>th</sup> morning, 155-165 gusting to 180 kmph over northern parts of central BoB and adjoining north BoB on 19<sup>th</sup> and 160-170 gusting to 190 kmph over north BoB by 20<sup>th</sup> morning.

### **(iii) Sea condition**

Sea condition will be rough to very rough over south & adjoining central BoB and Andaman Sea till 16<sup>th</sup> May afternoon. It will be High over southwest and adjoining central BoB from the 16<sup>th</sup> May evening, very high over the same region from 17<sup>th</sup> morning. It will become phenomenal over southern parts of central BoB on 18<sup>th</sup>, over northern parts of central & adjoining north BoB on 19<sup>th</sup> May and over north BoB on 20<sup>th</sup> May 2020.

### **(iv) Fishermen Warning**

- The fishermen are advised not to venture into south BoB from 16<sup>th</sup> to 17<sup>th</sup> May, into central BoB during 17<sup>th</sup> to 18<sup>th</sup> May and north BoB during 19 to 20<sup>th</sup> May 2020.
- Also, fishermen are advised not to venture into north BoB along and off North Odisha, West Bengal and adjoining Bangladesh coast during 18<sup>th</sup> to 20<sup>th</sup> May 2020.

The system is under continuous surveillance and the concerned state governments are being informed regularly.

Kindly visit [www.rsmcnewdelhi.imd.gov.in](http://www.rsmcnewdelhi.imd.gov.in) and [www.mausam.imd.gov.in](http://www.mausam.imd.gov.in) for updates on the system.

---

Contact: Cyclone Warning Division, Office of the Director General of Meteorology,  
India Meteorological Department, Ministry of Earth Sciences.

Phone: (91) 11-24652484, FAX: (91) 11-24643128, 24623220, E-mail: [cwdhq2008@gmail.com](mailto:cwdhq2008@gmail.com), Website: [rsmcnewdelhi.imd.gov.in](http://rsmcnewdelhi.imd.gov.in)

Spatial rainfall distribution: Isolated: <25%, A few: 26-50%, Many: 51-75%, Most: 76-100%

Rainfall amount (mm): Heavy rain: 64.5 – 115.5, Very heavy rain: 115.6 – 204.4, Extremely heavy rain: 204.5 or more.



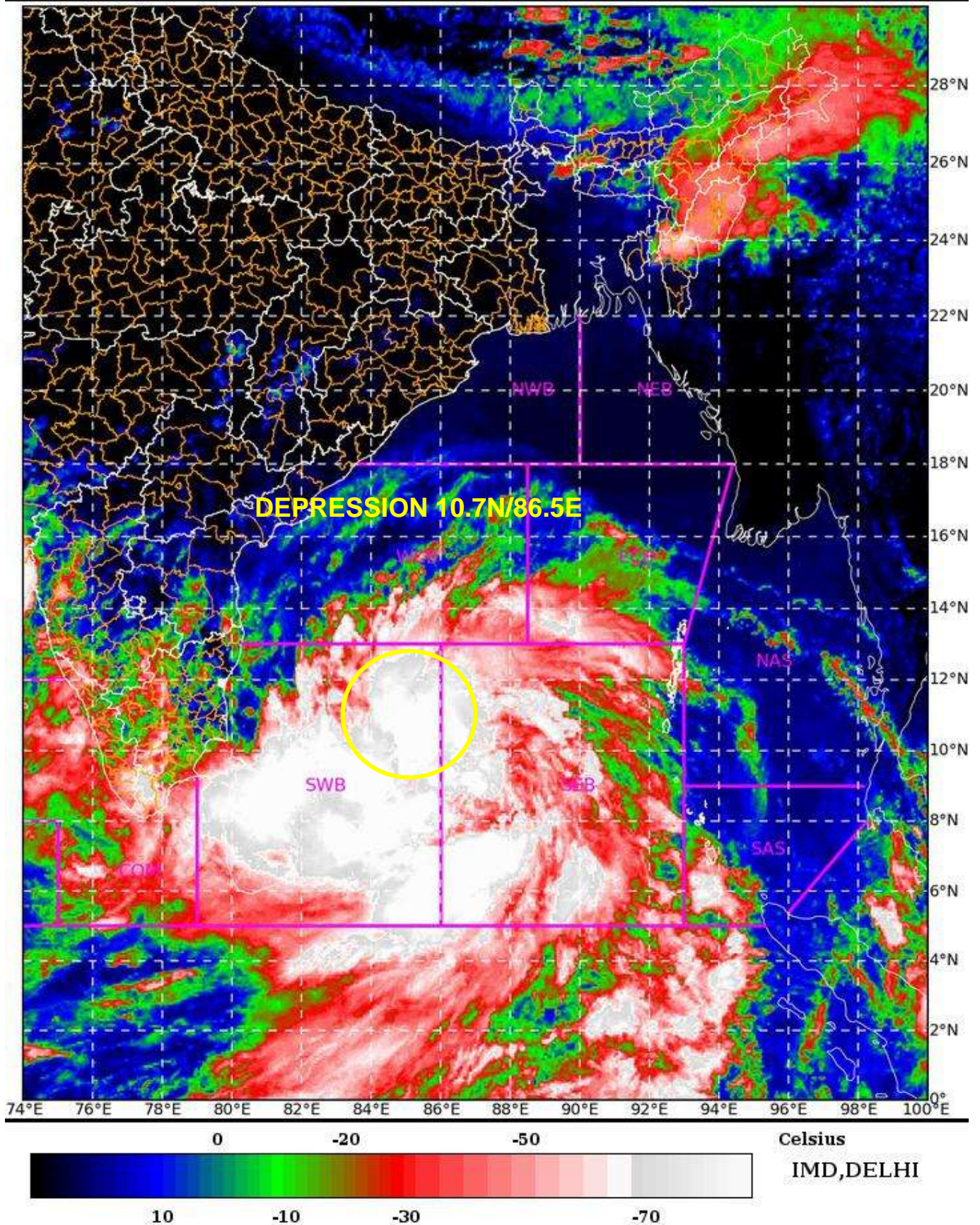
SAT : INSAT-3D IMG

16-05-2020/(0500 to 0527) GMT

IMG\_TIR1\_TEMP 10.8 um

16-05-2020/(1030 to 1057) IST

L1C Mercator



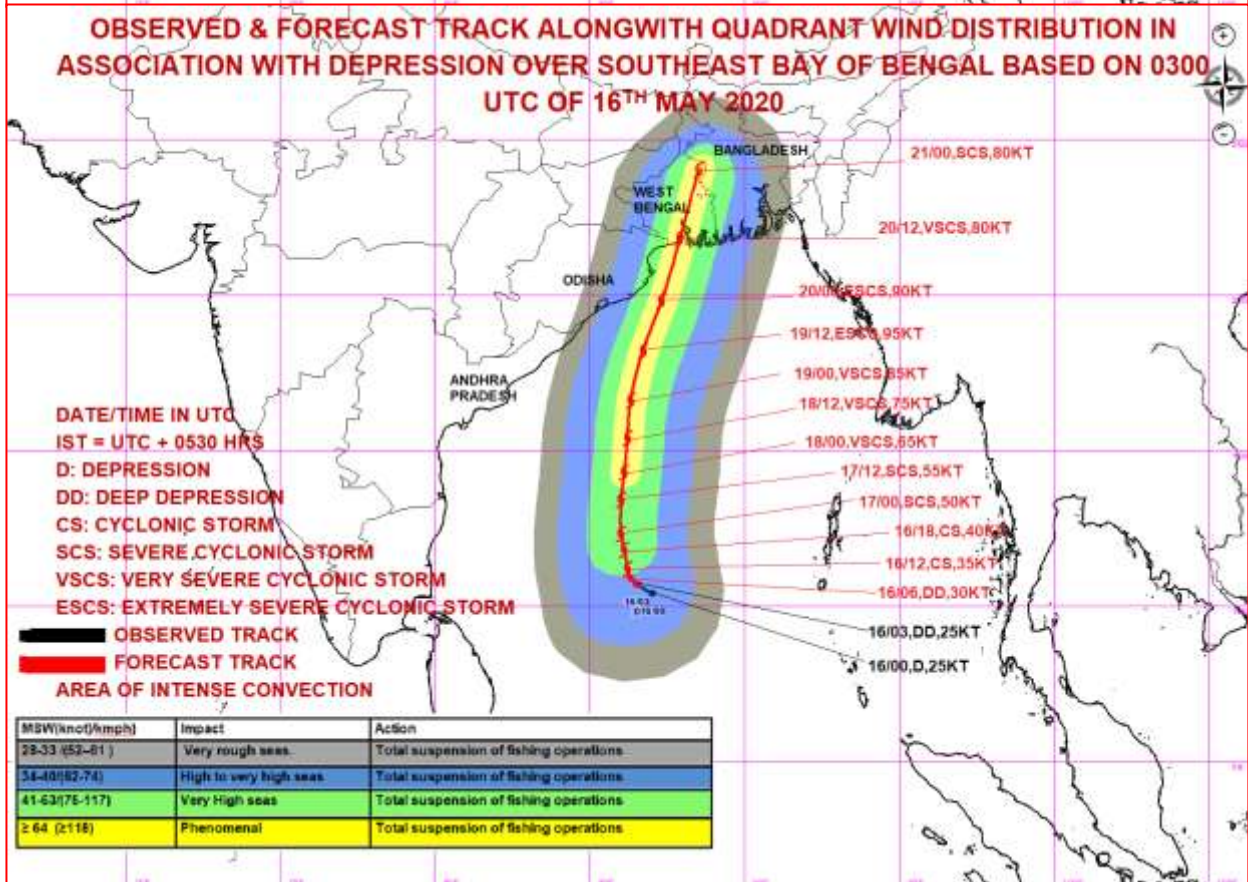
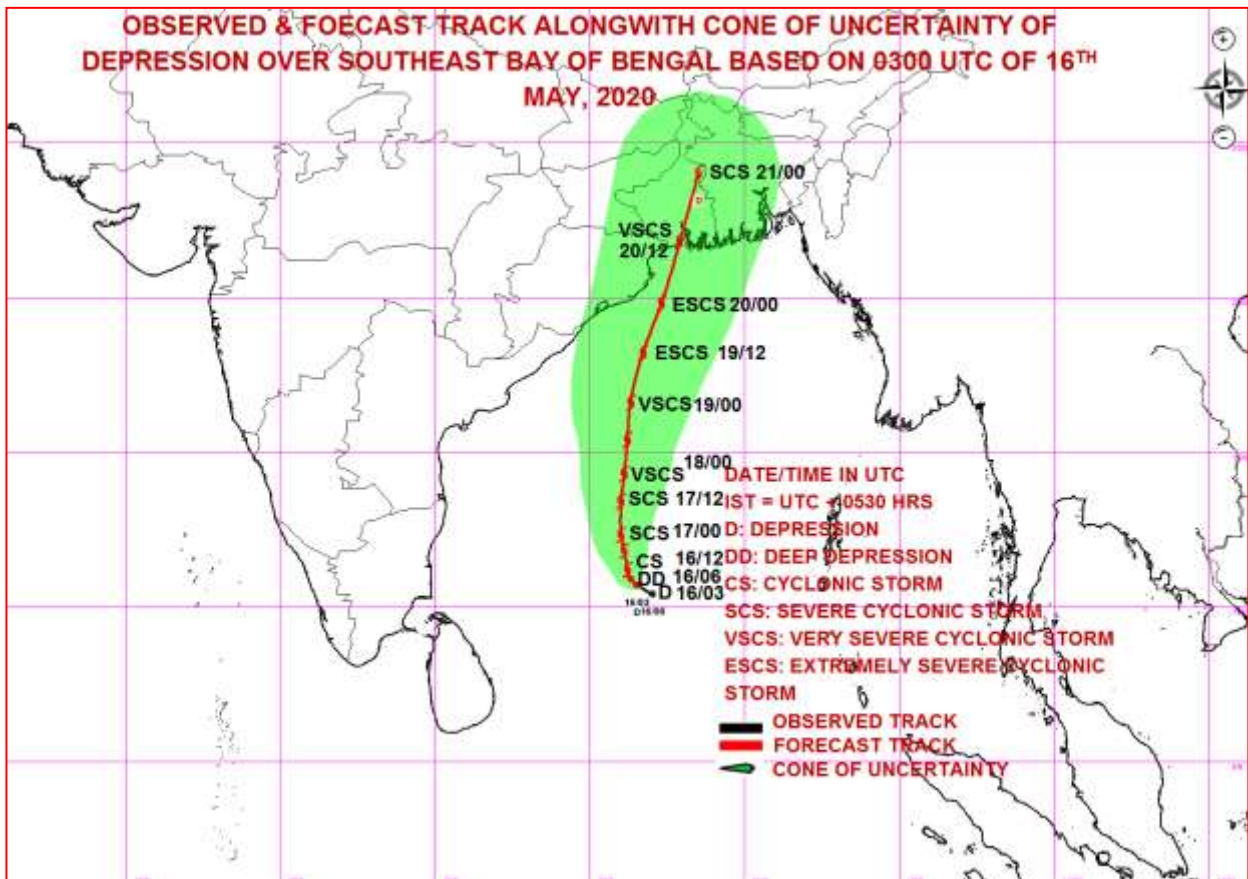
Contact: Cyclone Warning Division, Office of the Director General of Meteorology,  
India Meteorological Department, Ministry of Earth Sciences.

Phone: (91) 11-24652484, FAX: (91) 11-24643128, 24623220, E-mail: [cwdhq2008@gmail.com](mailto:cwdhq2008@gmail.com), Website: [rsmcnewdelhi.imd.gov.in](http://rsmcnewdelhi.imd.gov.in)

Spatial rainfall distribution: Isolated: <25%, A few: 26-50%, Many: 51-75%, Most: 76-100%

Rainfall amount (mm): Heavy rain: 64.5 – 115.5, Very heavy rain: 115.6 – 204.4, Extremely heavy rain: 204.5 or more.





Contact: Cyclone Warning Division, Office of the Director General of Meteorology,  
 India Meteorological Department, Ministry of Earth Sciences.

Phone: (91) 11-24652484, FAX: (91) 11-24643128, 24623220, E-mail: [cwdhq2008@gmail.com](mailto:cwdhq2008@gmail.com), Website: [rsmcnewdelhi.imd.gov.in](http://rsmcnewdelhi.imd.gov.in)

Spatial rainfall distribution: Isolated: <25%, A few: 26-50%, Many: 51-75%, Most: 76-100%

Rainfall amount (mm): Heavy rain: 64.5 – 115.5, Very heavy rain: 115.6 – 204.4, Extremely heavy rain: 204.5 or more.