



Government of India  
Ministry of Earth Sciences



India Meteorological Department

## PRESS RELEASE - 5

Time of issue: 1230 hours IST

Dated: 17-05-2020

**Sub: Severe Cyclonic Storm 'AMPHAN' (pronounced as UM-PUN) over central parts of south Bay of Bengal: Cyclone Alert for West Bengal Coast and Cyclone watch for Odisha coast: Yellow Message**

Yesterday's depression over southeast Bay of Bengal (BoB) intensified into a deep depression in the same afternoon (1430 hrs IST of 16<sup>th</sup> May), into cyclonic storm '**AMPHAN**' (pronounced as **UM-PUN**) in the same evening (1730 hrs IST of 16<sup>th</sup> May) over the central parts of south BoB. It further intensified into a severe cyclonic storm at 0830 hrs IST of today, the 17<sup>th</sup> May, 2020 and lay centred over the same region near latitude 11.4°N and longitude 86.0°E, about 990 km south of Paradip (Odisha), 1140 km south-southwest of Digha (West Bengal) and 1260 km south-southwest of Khepupara (Bangladesh).

It is very likely to intensify further into a very severe cyclonic storm during next 12 hours. It is very likely to move nearly northwards slowly during next 24 hours and then re-curve north-northeastwards and move fast across northwest BoB and cross West Bengal – Bangladesh coasts between Sagar Islands (West Bengal) and Hatiya Islands (Bangladesh) during afternoon / evening of 20<sup>th</sup> May 2020 as a Very Severe Cyclonic Storm.

Forecast track and intensity are given in the following table:

Date/Time(IST)	Position (Lat. °N/ long. °E)	Maximum sustained surface wind speed (Kmph)	Category of cyclonic disturbance
17.05.20/0830	11.4/86.0	90-100 gusting to 110	Severe Cyclonic Storm
17.05.20/1130	11.7/85.9	95-105 gusting to 115	Severe Cyclonic Storm
17.05.20/1730	12.3/85.8	105-115 gusting to 125	Severe Cyclonic Storm
17.05.20/2330	13.1/85.9	115-125 gusting to 140	Very Severe Cyclonic Storm
18.05.20/0530	13.7/86.0	125-135 gusting to 150	Very Severe Cyclonic Storm
18.05.20/1730	14.8/86.2	145-155 gusting to 170	Very Severe Cyclonic Storm
19.05.20/0530	16.1/86.6	160-170 gusting to 190	Extremely Severe Cyclonic Storm
19.05.20/1730	17.6/87.2	170-180 gusting to 200	Extremely Severe Cyclonic Storm
20.05.20/0530	19.6/88.0	170-180 gusting to 200	Extremely Severe Cyclonic Storm
20.05.20/1730	21.7/89.0	155-165 gusting to 180	Very Severe Cyclonic Storm
21.05.20/0530	23.5/89.7	95-105 gusting to 115	Severe Cyclonic Storm
21.05.20/1730	25.3/90.2	40-50 gusting to 60	Depression

### Warnings:

#### (i) Rainfall (over Andaman & Nicobar Islands):

- Light to moderate rainfall at most places is very likely over Andaman & Nicobar Islands during next 24 hours.

#### • Rainfall (over Odisha & Gangetic West Bengal)

Coastal Odisha is likely to experience light to moderate rainfall at many places with heavy falls at isolated places from 18<sup>th</sup> May evening. Rainfall at most places with heavy to very heavy rainfall at a few places on 19<sup>th</sup> May and isolated heavy rainfall over north coastal Odisha on 20<sup>th</sup> May 2020. Coastal districts of Gangetic West Bengal are likely to experience light to moderate rainfall at many places with heavy falls at isolated places on 19<sup>th</sup> May. Rainfall at most places with heavy to very heavy falls at a few places & extremely heavy falls at isolated places likely over coastal districts of West Bengal on 20<sup>th</sup> May.

Contact: Cyclone Warning Division, Office of the Director General of Meteorology,  
India Meteorological Department, Ministry of Earth Sciences.

Phone: (91) 11-24652484, FAX: (91) 11-24643128, 24623220, E-mail: [cwdhq2008@gmail.com](mailto:cwdhq2008@gmail.com), Website: [rsmcnewdelhi.imd.gov.in](http://rsmcnewdelhi.imd.gov.in)

Spatial rainfall distribution: Isolated: <25%, A few: 26-50%, Many: 51-75%, Most: 76-100%

Rainfall amount (mm): Heavy rain: 64.5 – 115.5, Very heavy rain: 115.6 – 204.4, Extremely heavy rain: 204.5 or more.

### **(ii) Wind warning**

- Squally wind speed reaching 45 to 55 kmph gusting to 65 kmph is likely to commence along and off south Odisha coast from 18<sup>th</sup> evening, extend to along & off north Odisha coast from 19<sup>th</sup> morning and along and off West Bengal coast from 19<sup>th</sup> afternoon. The wind speed will gradually increase becoming gale wind speed reaching 75 to 85 kmph gusting to 95 kmph from 20<sup>th</sup> morning along and off north Odisha and West Bengal coasts. It will gradually increase thereafter along & off West Bengal coast becoming 100-120 kmph gusting to 135 kmph from 20<sup>th</sup> May afternoon.
- Squally wind speed reaching 45 to 55 kmph gusting to 65 kmph is likely over Andaman Sea during next 24 hours.
- Squally wind speed reaching 80 to 90 kmph gusting to 100 kmph is prevailing over southeast and adjoining southwest BoB. It is likely to increase becoming 125-135 gusting to 150 kmph over southern parts of central BoB by 18<sup>th</sup> morning, 160-170 gusting to 190 kmph over northern parts of central & adjoining North BoB on 19<sup>th</sup> and 155-165 gusting to 180 kmph over north BoB during 20<sup>th</sup> May.

### **(iii) Sea condition**

Sea condition will very high over southwest and adjoining central BoB during next 24 hours It will become phenomenal over southern parts of central BoB from tonight, over northern parts of central & adjoining north BoB on 19<sup>th</sup> May and over north BoB on 20<sup>th</sup> May 2020.

### **(iv) Fishermen Warning**

- The fishermen are advised not to venture into south Bay of Bengal during next 24 hours, to central Bay of Bengal during 17<sup>th</sup> to 18<sup>th</sup> May and North Bay of Bengal during 18<sup>th</sup> to 20<sup>th</sup> May 2020.
- Also, fishermen are advised not to venture into north Bay of Bengal along and off North Odisha, West Bengal and adjoining Bangladesh coasts during 18<sup>th</sup> to 20<sup>th</sup> May 2020.

The system is under continuous surveillance and the concerned state governments are being informed regularly.

Kindly visit [www.rsmcnewdelhi.imd.gov.in](http://www.rsmcnewdelhi.imd.gov.in) and [www.mausam.imd.gov.in](http://www.mausam.imd.gov.in) for updates on the system.

---

Contact: Cyclone Warning Division, Office of the Director General of Meteorology,  
India Meteorological Department, Ministry of Earth Sciences.

Phone: (91) 11-24652484, FAX: (91) 11-24643128, 24623220, E-mail: [cwdhq2008@gmail.com](mailto:cwdhq2008@gmail.com), Website: [rsmcnewdelhi.imd.gov.in](http://rsmcnewdelhi.imd.gov.in)

Spatial rainfall distribution: Isolated: <25%, A few: 26-50%, Many: 51-75%, Most: 76-100%

Rainfall amount (mm): Heavy rain: 64.5 – 115.5, Very heavy rain: 115.6 – 204.4, Extremely heavy rain: 204.5 or more.

SAT : INSAT-3D IMG

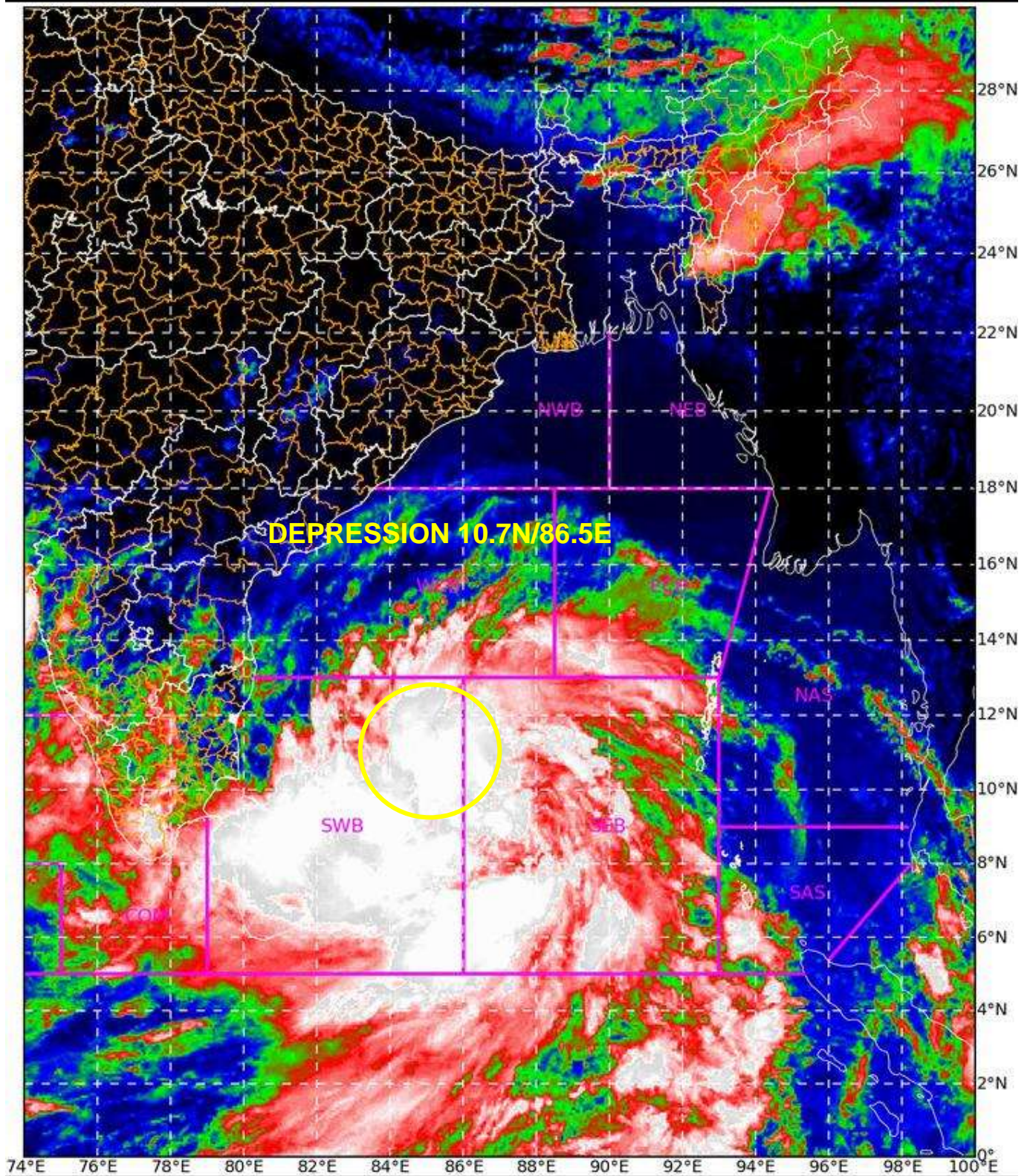
16-05-2020/(0500 to 0527) GMT

IMG\_TIR1\_TEMP 10.8 um

16-05-2020/(1030 to 1057) IST



L1C Mercator



Celsius

IMD, DELHI

Co

10

-10

-30

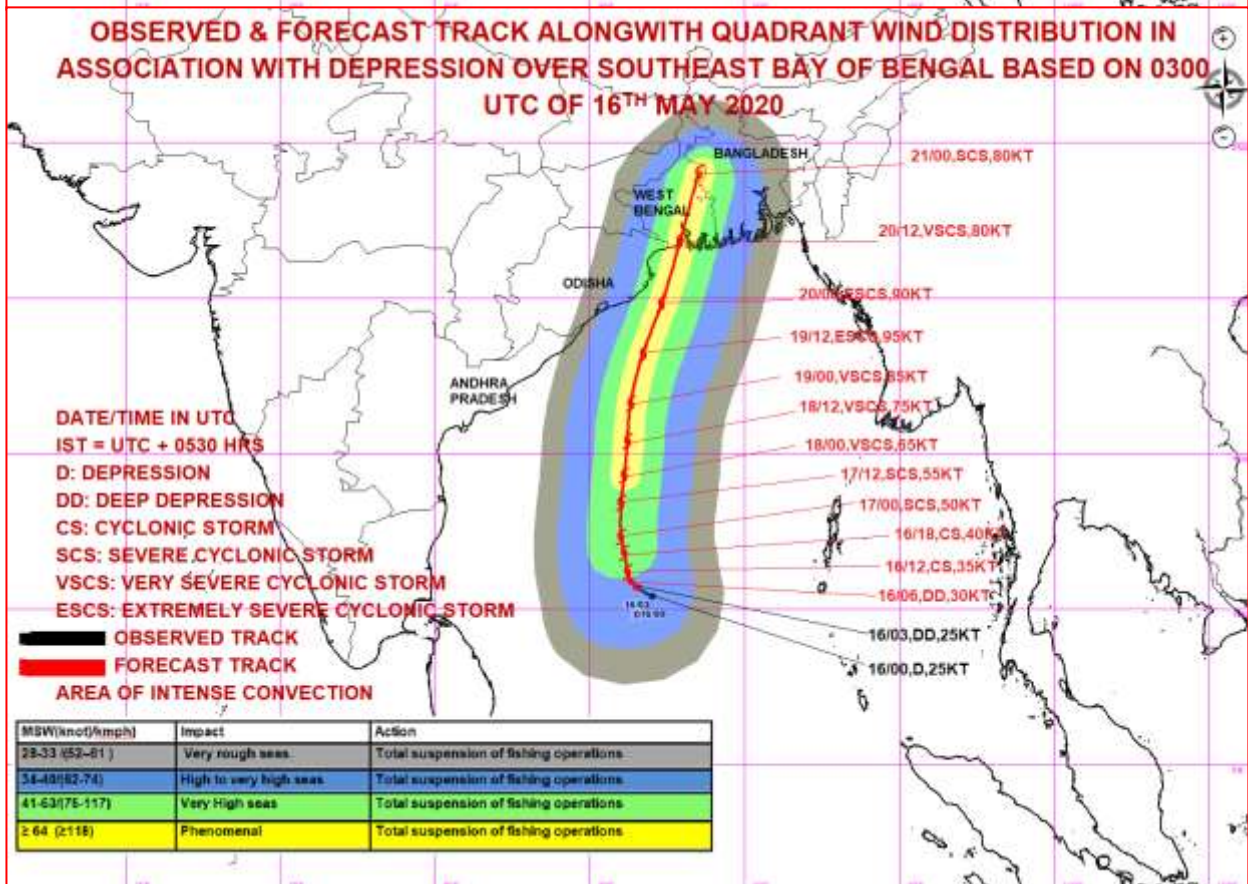
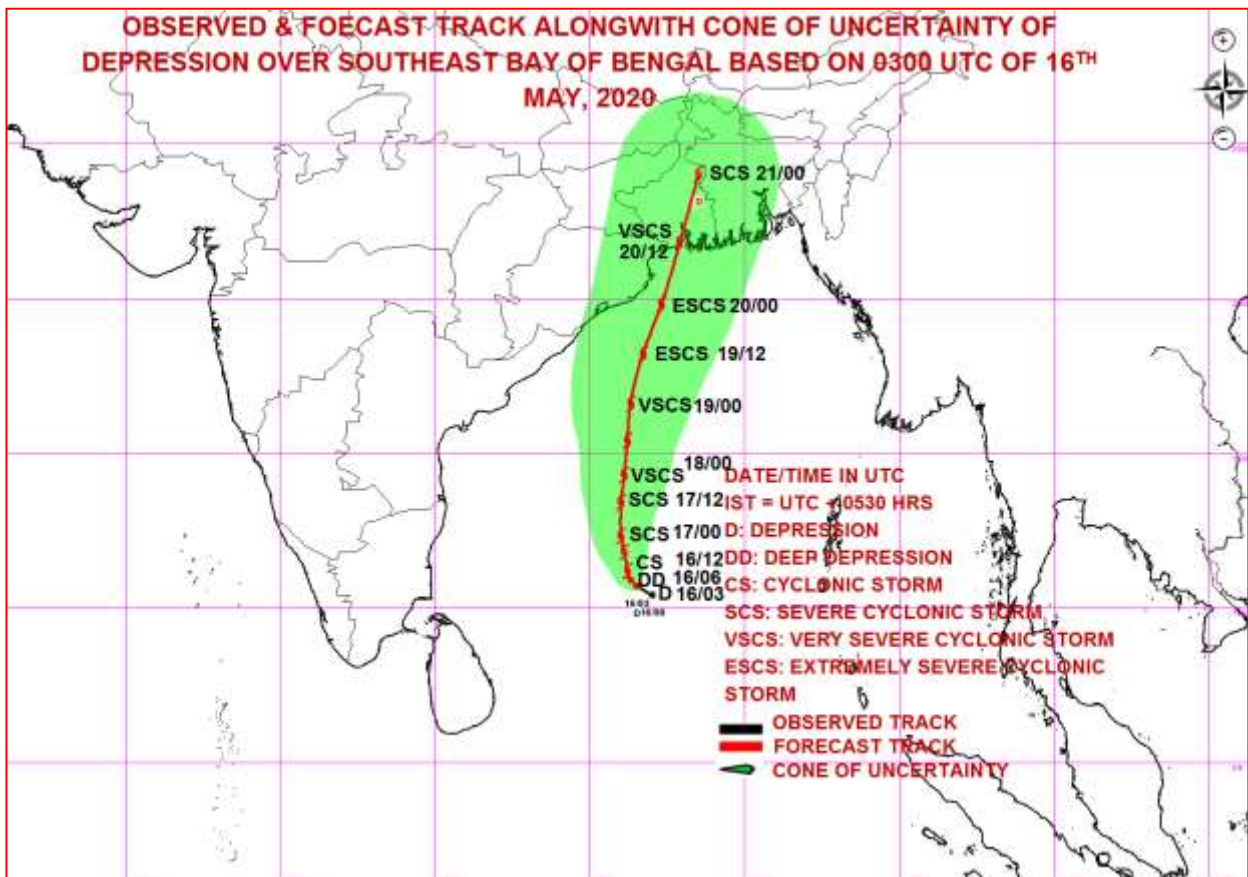
-70

India meteorological Department, ministry of Earth Sciences.

Phone: (91) 11-24652484, FAX: (91) 11-24643128, 24623220, E-mail: [cwdhq2008@gmail.com](mailto:cwdhq2008@gmail.com), Website: [rsmcnewdelhi.imd.gov.in](http://rsmcnewdelhi.imd.gov.in)

Spatial rainfall distribution: Isolated: <25%, A few: 26-50%, Many: 51-75%, Most: 76-100%

Rainfall amount (mm): Heavy rain: 64.5 – 115.5, Very heavy rain: 115.6 – 204.4, Extremely heavy rain: 204.5 or more.



Contact: Cyclone Warning Division, Office of the Director General of Meteorology,  
India Meteorological Department, Ministry of Earth Sciences.

Phone: (91) 11-24652484, FAX: (91) 11-24643128, 24623220, E-mail: [cwdhq2008@gmail.com](mailto:cwdhq2008@gmail.com), Website: [rsmcnewdelhi.imd.gov.in](http://rsmcnewdelhi.imd.gov.in)

Spatial rainfall distribution: Isolated: <25%, A few: 26-50%, Many: 51-75%, Most: 76-100%

Rainfall amount (mm): Heavy rain: 64.5 – 115.5, Very heavy rain: 115.6 – 204.4, Extremely heavy rain: 204.5 or more.