



Government of India
Ministry of Earth Sciences
Earth System Science Organisation



Earth System Science Organisation
India Meteorological Department

PRESS RELEASE- 9

Time of issue: 1300 hours IST

Dated: 01-11-2019

Sub: (a) Severe Cyclonic Storm “MAHA” over eastcentral Arabian Sea (b) Cyclonic Storm “KYARR” weakened into a depression over westcentral Arabian Sea

(a) Severe Cyclonic Storm “MAHA” over eastcentral Arabian Sea

Yesterday’s cyclonic storm “MAHA” (Pronounced as M’maha) over Lakshadweep and adjoining areas moved north-northwestwards and intensified into severe cyclonic storm around same noon (1130 hrs IST of 31st October). It moved across Lakshadweep Islands and emerged into Arabian Sea in the same night (2030 hrs IST). It lay centered in the morning (0830 hrs IST) of today, the 1st November, 2019 near latitude 14.8°N and longitude 71.0°E over eastcentral Arabian Sea about 450 km north-northwest of Aminidivi (Lakshadweep), 460 km north-northwest of Mangaluru (Karnataka) and 310 km south-southwest of Goa.

It is very likely to move northwestwards during next 06 hours and thereafter move west-northwestwards till 5th November morning and recurve northeastwards subsequently. It is very likely to intensify into a very severe cyclonic storm over eastcentral Arabian Sea during next 12 hours.

Forecast track and intensity are given in the following table:

Date/Time(IST)	Position (Lat. °N/ long. °E)	Maximum sustained surface wind speed (Kmph)	Category of cyclonic disturbance
01.11.19/0830	14.8/71.0	100-110 gusting to 125	Severe Cyclonic Storm
01.11.19/1130	15.2/70.5	105-115 gusting to 130	Severe Cyclonic Storm
01.11.19/1730	15.7/70.1	115-125 gusting to 140	Very Severe Cyclonic Storm
01.11.19/2330	16.1/69.6	115-125 gusting to 140	Very Severe Cyclonic Storm
02.11.19/0530	16.5/69.1	125-135 gusting to 150	Very Severe Cyclonic Storm
02.11.19/1730	17.1/68.3	125-135 gusting to 150	Very Severe Cyclonic Storm
03.11.19/0530	17.5/67.5	135-145 gusting to 160	Very Severe Cyclonic Storm
03.11.19/1730	17.8/66.7	135-145 gusting to 160	Very Severe Cyclonic Storm
04.11.19/0530	18.0/65.4	145-155 gusting to 170	Very Severe Cyclonic Storm
04.11.19/1730	18.4/64.3	145-155 gusting to 170	Very Severe Cyclonic Storm
05.11.19/0530	18.8/64.0	155-165 gusting to 180	Very Severe Cyclonic Storm
05.11.19/1730	19.3/64.5	145-155 gusting to 170	Very Severe Cyclonic Storm
06.11.19/0530	19.8/65.5	135-145 gusting to 160	Very Severe Cyclonic Storm

Warnings:

(i) Rainfall:

- Light to moderate rainfall at a few places very likely over Konkan & Goa, Madhya Maharashtra and south Gujarat during next 24 hours.

(ii) Wind warning

- Gale wind speed reaching 100-110 kmph gusting to 125 kmph is prevailing over eastcentral Arabian Sea around the system centre.
- Gale wind speed is very likely to increase gradually over east-central Arabian Sea becoming 115-125 kmph gusting to 140 kmph by the evening of 1st November and 155-165 kmph gusting to 180 kmph over eastcentral adjoining westcentral Arabian Sea by 05th November morning.

Contact: Cyclone Warning Division, Office of the Director General of Meteorology, India Meteorological Department, Ministry of Earth Sciences.

Phone: (91) 11-24652484, FAX: (91) 11-24643128, 24623220, E-mail: cwdhq2008@gmail.com, Website: rsmcnewdelhi.imd.gov.in

Spatial rainfall distribution: Isolated: <25%, A few: 26-50%, Many: 51-75%, Most: 76-100%

Rainfall amount (mm): Heavy rain: 64.5 – 115.5, Very heavy rain: 115.6 – 204.4, Extremely heavy rain: 204.5 or more.

- Gale wind speed reaching 115-125 kmph gusting to 140 kmph likely to commence over west-central Arabian Sea from the morning of 4th November, becoming 155-165 kmph gusting to 180 kmph by the morning of 5th November.
- Squally wind speed reaching 40-50 kmph gusting to 60 kmph likely along & off Karnataka, Goa- Maharashtra coasts during next 24 hours.

(iii) Sea condition

- Sea condition will be very high over eastcentral Arabian Sea for the next 12 hours and will become phenomenal from today evening for subsequent 04 days and over eastcentral and adjoining west central Arabian Sea from 4th November.

(iv) Fishermen Warning

- The fishermen are advised not to venture sea along & off Karnataka-Goa- Maharashtra coasts during next 24 hours and into eastcentral Arabian Sea till 6th November, 2019 and over west eastcentral Arabian Sea from 04th November onwards.

(v) Realised Wind:

Amini Divi reported maximum sustained wind speed of 72 kmph during morning hours, 83 kmph at 1130 IST, 72 kmph at 1430 IST, 59 kmph at 1730 IST and 45 kmph at 2030 IST of 31st October, 2019.

(b) Cyclonic Storm “KYARR” weakened into a depression over westcentral Arabian Sea

Yesterday’s cyclonic storm over westcentral Arabian Sea weakened into a deep depression in the same night (2030 hrs IST) and into a depression over the same region in the early morning (0530 hrs IST) of today, the 1st November, 2019. At 0830 hrs IST of today, it lay centered over westcentral Arabian Sea near latitude 16.3°N and longitude 59.0°E, about 1490 km west-southwest of Mumbai (Maharashtra), 540 km east-northeast of Salalah (Oman) and 480 km south-southeast of Masirah (Oman).

It is very likely to move southwestwards across westcentral Arabian Sea and weaken into a Well Marked Low Pressure Area during next 12 hours.

Forecast track and intensity are given in the following table:

Date/Time(IST)	Position (Lat. °N/ long. °E)	Maximum sustained surface wind speed (Kmph)	Category of cyclonic disturbance
01.11.19/0830	16.3/59.0	45-55 gusting to 65	Depression
01.11.19/1130	16.1/58.7	40-50 gusting to 60	Depression
01.11.19/1730	15.7/58.1	25-35 gusting to 45	Well Marked Low Pressure Area

Warnings:

(i) Wind warning

- Gale wind speed reaching 45-55 kmph gusting to 65 kmph is prevailing around the system centre over westcentral Arabian Sea. It is very likely to reduce gradually further.

(ii) Sea condition

- Sea condition is rough to very rough over westcentral Arabian Sea around the system centre. It will remain rough to very rough during next 6 hours and improve gradually thereafter.

(iii) Fishermen Warning

- The fishermen are advised not to venture into westcentral Arabian Sea during next 12 hours.

Both the systems are under continuous surveillance and concerned state governments are being informed regularly.

Kindly visit www.imd.gov.in, www.rsmcnewdelhi.imd.gov.in and www.mausam.imd.gov.in for updates on the system.

Contact: Cyclone Warning Division, Office of the Director General of Meteorology, India Meteorological Department, Ministry of Earth Sciences.

Phone: (91) 11-24652484, FAX: (91) 11-24643128, 24623220, E-mail: cwdhq2008@gmail.com, Website: rsmcnewdelhi.imd.gov.in

Spatial rainfall distribution: Isolated: <25%, A few: 26-50%, Many: 51-75%, Most: 76-100%

Rainfall amount (mm): Heavy rain: 64.5 – 115.5, Very heavy rain: 115.6 – 204.4, Extremely heavy rain: 204.5 or more.

SAT : INSAT-3D IMG

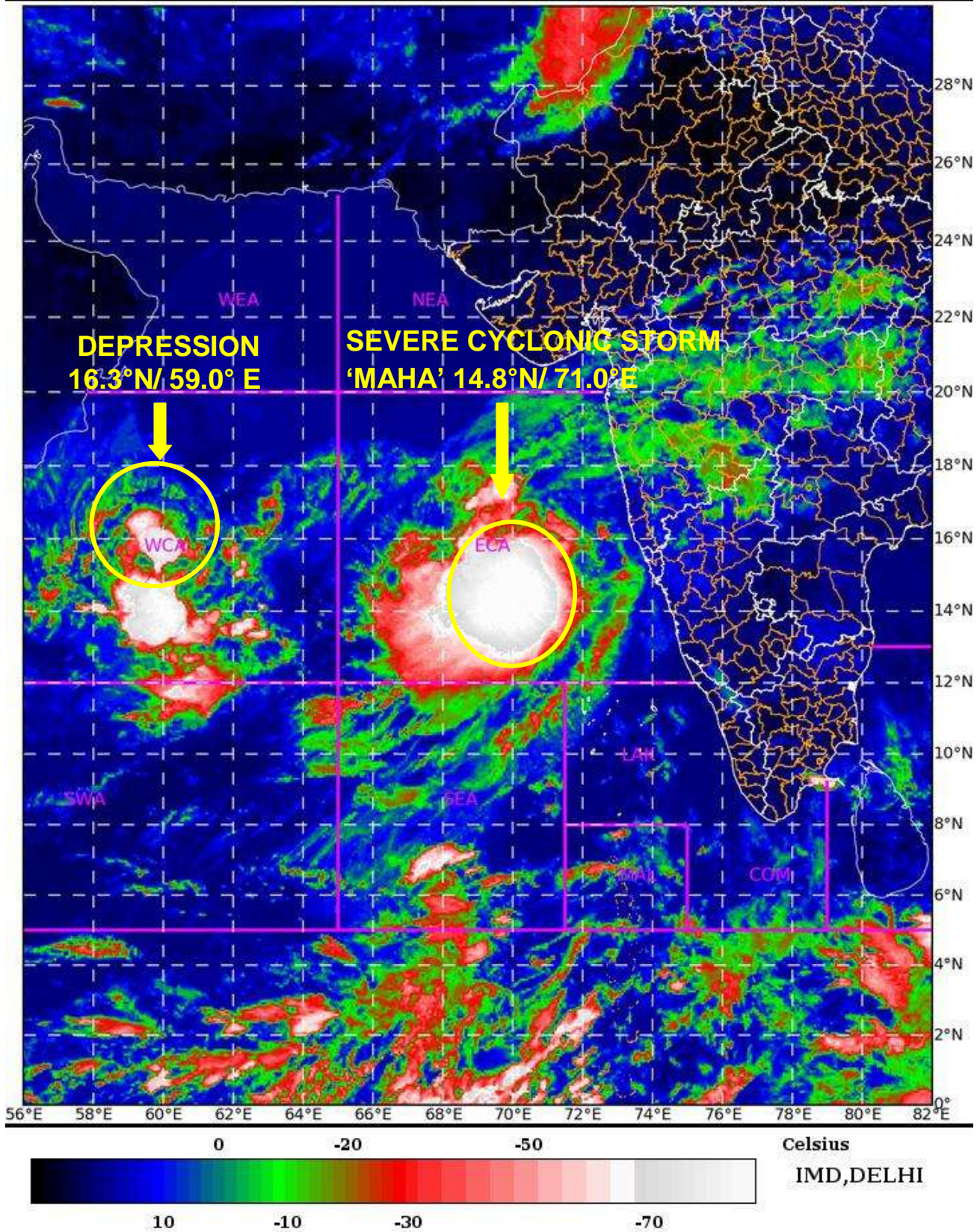
01-11-2019/(0500 to 0526) GMT

IMG_TIR1_TEMP 10.8 um

01-11-2019/(1030 to 1056) IST



ARABIAN SEA



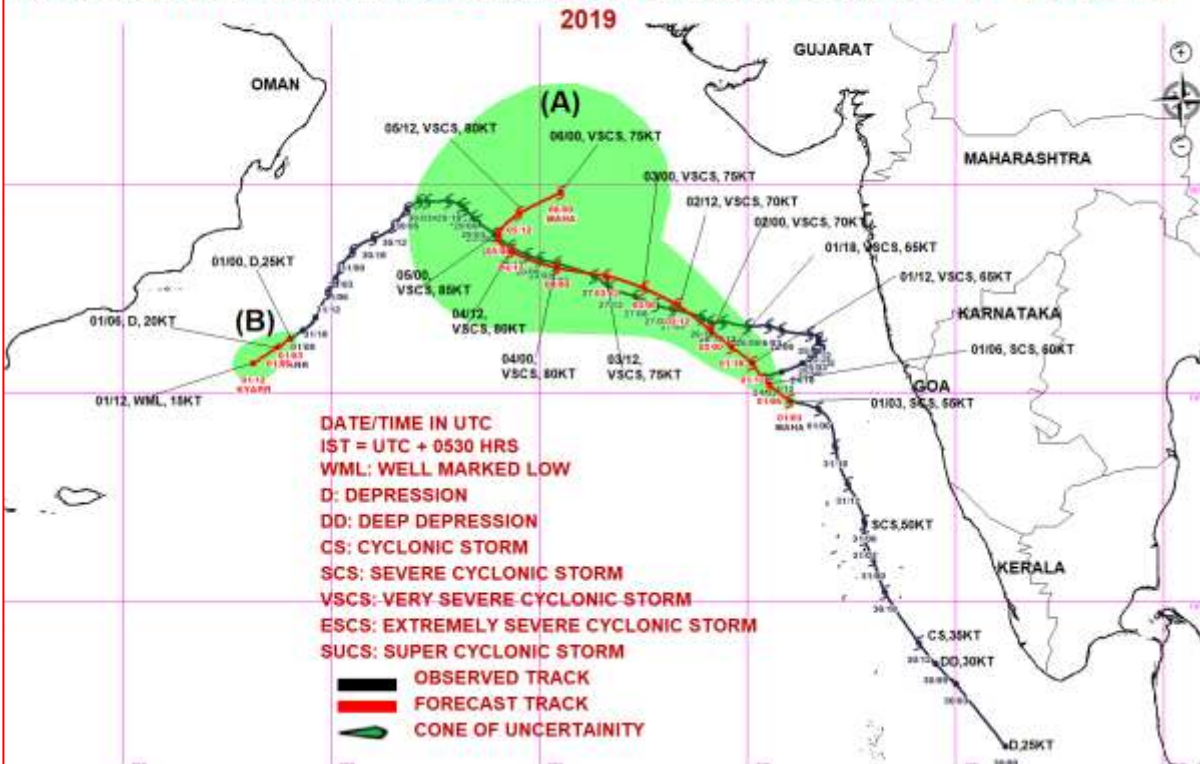
Contact: Cyclone Warning Division, Office of the Director General of Meteorology,
India Meteorological Department, Ministry of Earth Sciences.

Phone: (91) 11-24652484, FAX: (91) 11-24643128, 24623220, E-mail: cwdhq2008@gmail.com, Website: rsmcnewdelhi.imd.gov.in

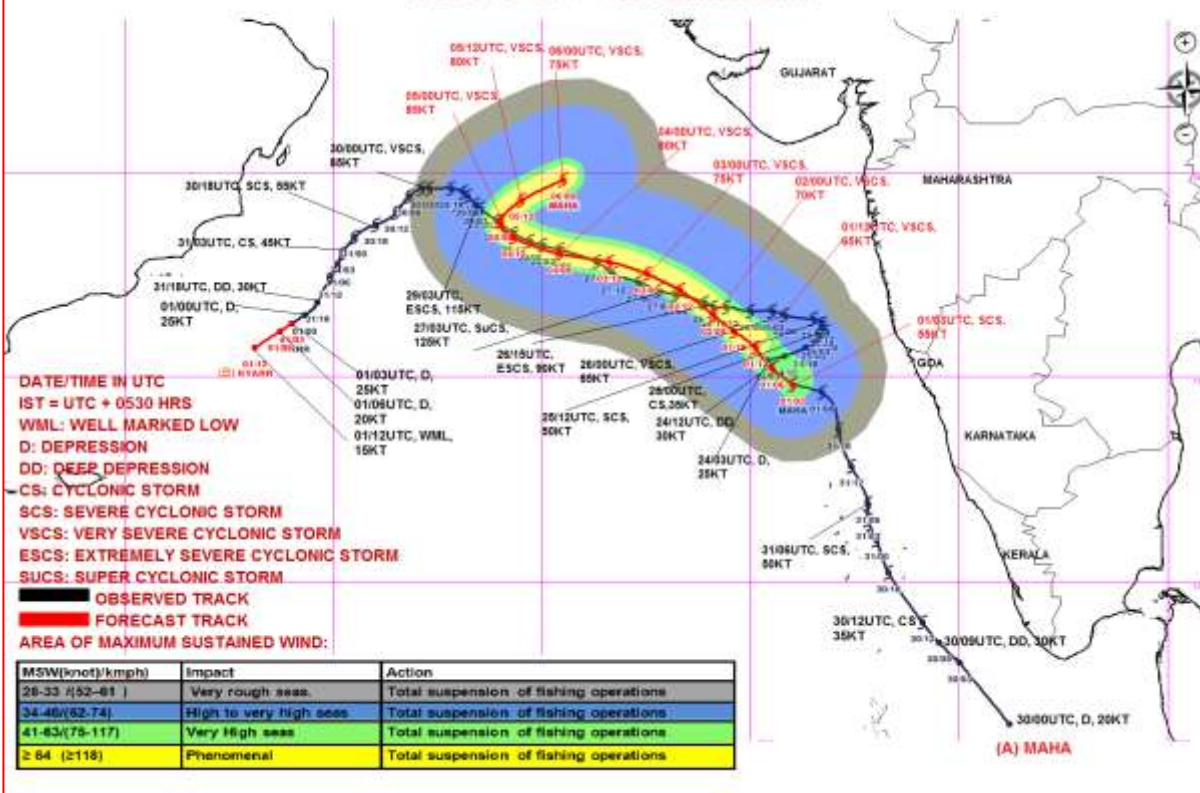
Spatial rainfall distribution: Isolated: <25%, A few: 26-50%, Many: 51-75%, Most: 76-100%

Rainfall amount (mm): Heavy rain: 64.5 – 115.5, Very heavy rain: 115.6 – 204.4, Extremely heavy rain: 204.5 or more.

OBSERVED & FORECAST TRACK ALONGWITH CONE OF UNCERTAINTY IN ASSOCIATION WITH (A) SEVERE CYCLONIC STORM "MAHA" OVER EASTCENTRAL ARABIAN SEA AND (B) DEPRESSION OVER WESTCENTRAL ARABIAN SEA BASED ON 0300 UTC OF 01ST NOVEMBER 2019



OBSERVED & FORECAST TRACK ALONGWITH QUADRANT WIND DISTRIBUTION IN ASSOCIATION WITH (A) SEVERE CYCLONIC STORM "MAHA" OVER EASTCENTRAL ARABIAN SEA AND (B) DEPRESSION OVER WESTCENTRAL ARABIAN SEA BASED ON 0300 UTC OF 1ST NOVEMBER 2019



Contact: Cyclone Warning Division, Office of the Director General of Meteorology, India Meteorological Department, Ministry of Earth Sciences.
 Phone: (91) 11-24652484, FAX: (91) 11-24643128, 24623220, E-mail: cwdhq2008@gmail.com, Website: rsmcnewdelhi.imd.gov.in
 Spatial rainfall distribution: Isolated: <25%, A few: 26-50%, Many: 51-75%, Most: 76-100%
 Rainfall amount (mm): Heavy rain: 64.5 – 115.5, Very heavy rain: 115.6 – 204.4, Extremely heavy rain: 204.5 or more.