



Government of India  
Ministry of Earth Sciences



India Meteorological Department

## PRESS RELEASE - 10

Time of issue: 1800 hours IST

Dated: 21-05-2020

### Sub: Super Cyclonic Storm 'AMPHAN' crossed West Bengal coast yesterday evening and gradually weakened into a deep depression over Bangladesh

Yesterday's extremely severe cyclonic storm '**AMPHAN**' moved north-northeastwards and crossed West Bengal-Bangladesh coasts between Digha (West Bengal) and Hatiya (Bangladesh) near Sundarbans between 1530 and 1730 hrs IST of 20<sup>th</sup> May, 2020 as a very severe cyclonic storm with a wind speed of 155-165 kmph gusting to 185 kmph. Moving east-northeastwards, it weakened into a severe cyclonic storm in the same night (2330 hrs IST) over Bangladesh and adjoining West Bengal. It further weakened into a cyclonic storm over Bangladesh in the early hours (0230 hrs IST) of today, the 21<sup>st</sup> May 2020. Subsequently, it weakened into a deep depression and lay centered at 1130 hrs IST of today, the 21<sup>st</sup> May, 2020 over Bangladesh near latitude 25.0°N and longitude 89.6°E about 300 km east-northeast of Kolkata, 110 km south-southeast of Dhubri and 80 km south-southeast of Rangpur (Bangladesh).

**It is very likely to continue to move north-northeastwards and weaken further into a Depression during next 03 hours and into a well marked low pressure area during subsequent 12 hours.**

Forecast track and intensity are given in the following table:

Date/Time(IST)	Position (Lat. °N/ long. °E)	Maximum sustained surface wind speed (Kmph)	Category of cyclonic disturbance
21.05.20/1130	25.0/89.6	50-60 gusting to 70	Deep Depression
21.05.20/1730	26.2/90.3	30-40 gusting to 50	Depression

#### (1) Heavy rainfall Warning:

**Assam & Meghalaya:** Light to moderate rainfall at most places with heavy to **extremely heavy falls ( $\geq 20$  cm)** at isolated places very likely on 21<sup>st</sup> May, 2020.

**Arunachal Pradesh:** Light to moderate rainfall at most places with heavy to very heavy falls at isolated places very likely on 21<sup>st</sup> May, 2020.

#### (2) Wind warning

Squally wind speed reaching 50 to 60 kmph gusting to 70 kmph very likely over Western Assam & Western Meghalaya till evening and reduce gradually thereafter.

#### (3) Realised weather over West Bengal

- Maximum sustained wind speed recorded:**  
Kolkata (Dum Dum) reported **130 kmph at 1855 hrs IST and Kolkata (Alipore) 112 kmph at 1752 hrs IST of 20<sup>th</sup> May.**
- The chief amounts of rainfall (in cm) realised on 20<sup>th</sup> May are: Alipore-24, DumDum-20 and Haldia-8.

Kindly visit [www.rsmcnewdelhi.imd.gov.in](http://www.rsmcnewdelhi.imd.gov.in) and [www.mausam.imd.gov.in](http://www.mausam.imd.gov.in) for updates on the system.

Contact: Cyclone Warning Division, Office of the Director General of Meteorology,  
India Meteorological Department, Ministry of Earth Sciences.

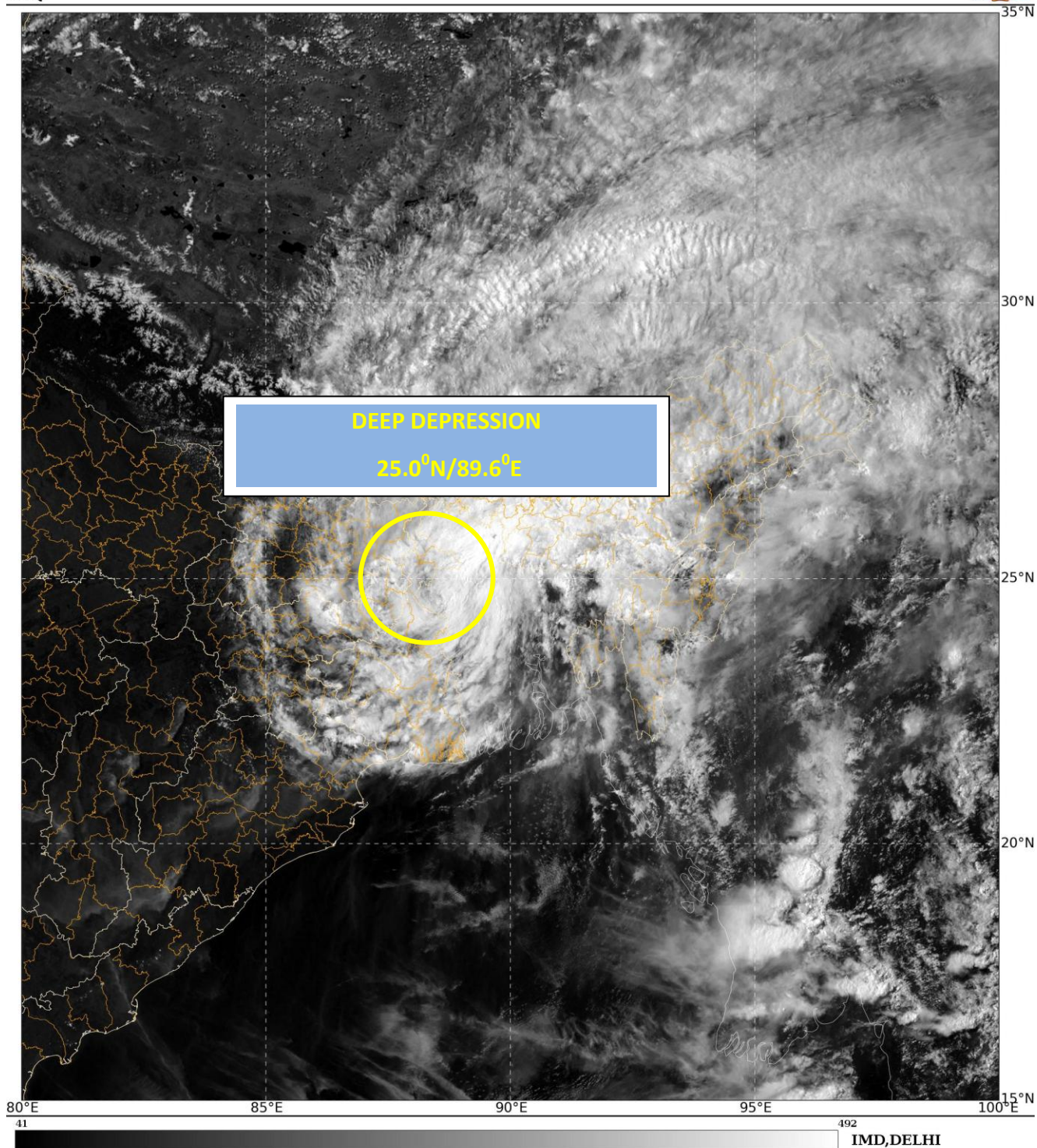
Phone: (91) 11-24652484, FAX: (91) 11-24643128, 24623220, E-mail: [cwdhq2008@gmail.com](mailto:cwdhq2008@gmail.com), Website: [www.rsmcnewdelhi.imd.gov.in](http://www.rsmcnewdelhi.imd.gov.in)

Spatial rainfall distribution: Isolated: <25%, A few: 26-50%, Many: 51-75%, Most: 76-100%

Rainfall amount (mm): Heavy rain: 64.5 – 115.5, Very heavy rain: 115.6 – 204.4, Extremely heavy rain: 204.5 or more.

SAT : INSAT-3D IMG  
Visible Count 0.65 um  
NEQ

21-05-2020/(0800 to 0827) GMT  
21-05-2020/(1330 to 1357) IST

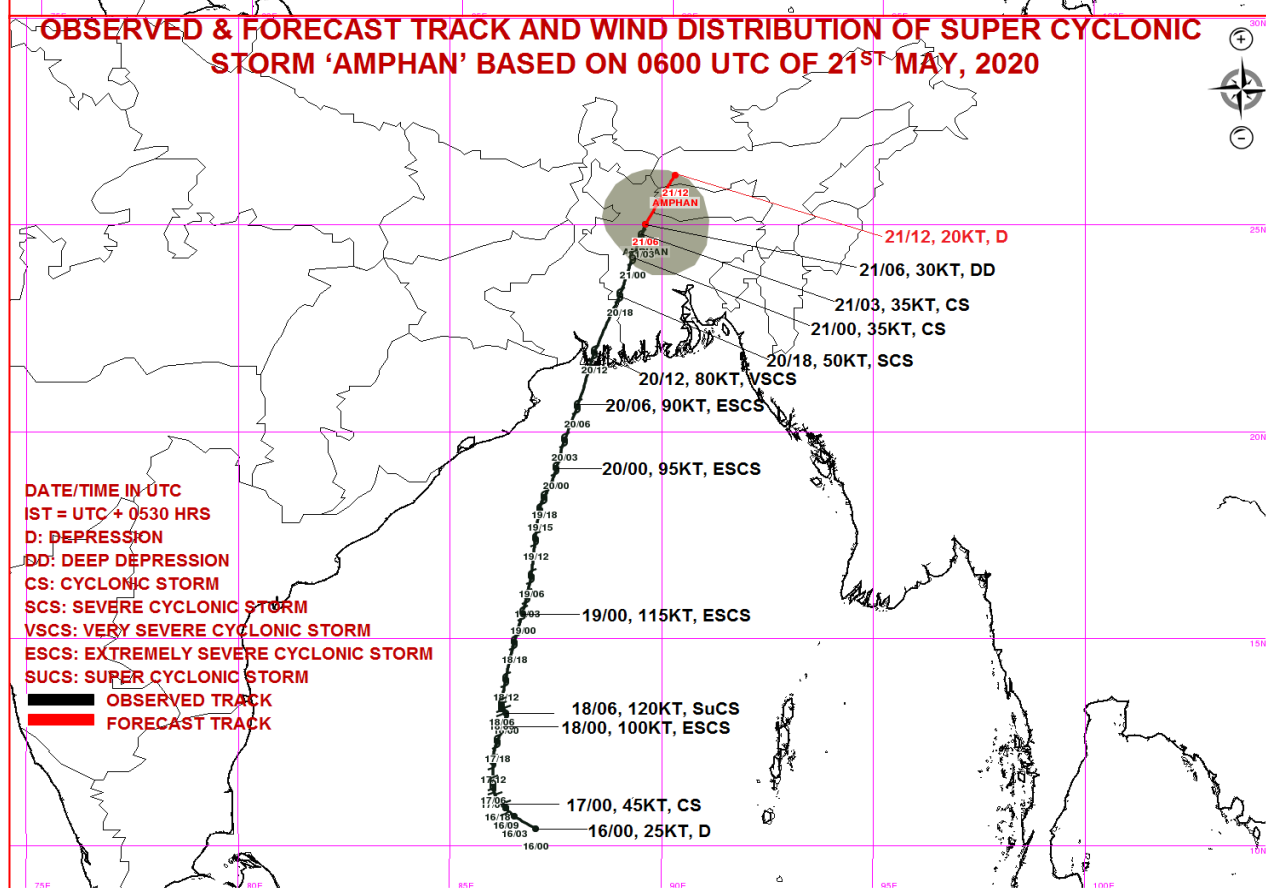
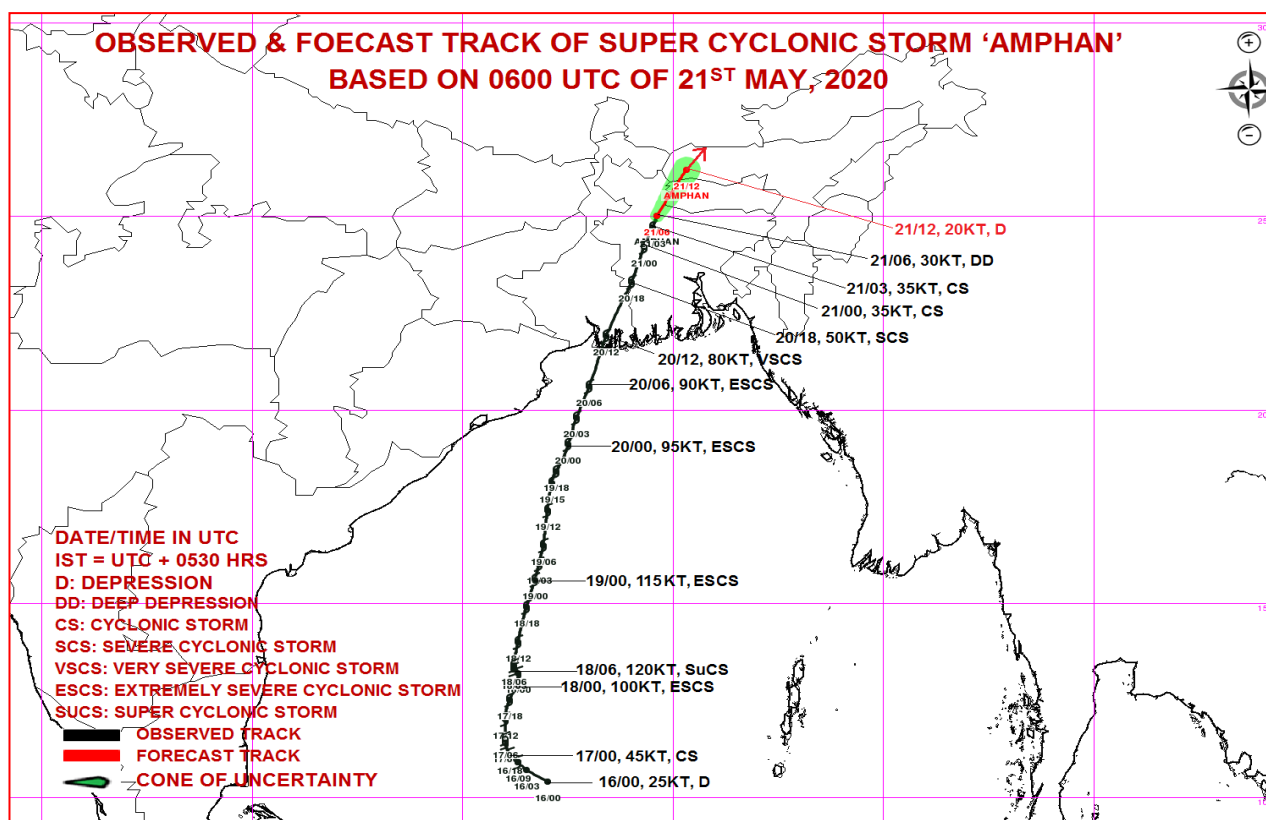


Contact: Cyclone Warning Division, Office of the Director General of Meteorology,  
India Meteorological Department, Ministry of Earth Sciences.

Phone: (91) 11-24652484, FAX: (91) 11-24643128, 24623220, E-mail: [cwdhq2008@gmail.com](mailto:cwdhq2008@gmail.com), Website: [rsmcnewdelhi.imd.gov.in](http://rsmcnewdelhi.imd.gov.in)

Spatial rainfall distribution: Isolated: <25%, A few: 26-50%, Many: 51-75%, Most: 76-100%

Rainfall amount (mm): Heavy rain: 64.5 – 115.5, Very heavy rain: 115.6 – 204.4, Extremely heavy rain: 204.5 or more.



Contact: Cyclone Warning Division, Office of the Director General of Meteorology,  
 India Meteorological Department, Ministry of Earth Sciences.

Phone: (91) 11-24652484, FAX: (91) 11-24643128, 24623220, E-mail: [cwdhq2008@gmail.com](mailto:cwdhq2008@gmail.com), Website: [rsmcnewdelhi.imd.gov.in](http://rsmcnewdelhi.imd.gov.in)

Spatial rainfall distribution: Isolated: <25%, A few: 26-50%, Many: 51-75%, Most: 76-100%

Rainfall amount (mm): Heavy rain: 64.5 – 115.5, Very heavy rain: 115.6 – 204.4, Extremely heavy rain: 204.5 or more.