



Government of India
Ministry of Earth Sciences



India Meteorological Department

PRESS RELEASE - 11

Time of issue: 1330 hours IST

Dated: 22-05-2020

Sub: Deep Depression (remnant of Super Cyclonic Storm 'AMPHAN') further weakened into a depression over Bangladesh and subsequently into a Low Pressure area

Yesterday's deep depression over Bangladesh further weakened into a Depression in the evening (0530 hours IST) of yesterday, the 21st May 2020, over north Bangladesh.

Subsequently it further weakened into a well marked low over north Bangladesh & neighbourhood around mid-night (2330 hrs IST) of yesterday and lay as a low pressure area today (22nd May 2020) morning.

Light to moderate rainfall at most places with isolated heavy to very heavy & extremely heavy falls occurred over Meghalaya, isolated heavy to very heavy falls over Assam & Arunachal Pradesh.

Chief amounts of rainfall (in mm) during the past 24 hours ending at 0830 hours IST of today:

Meghalaya: Sohra – 245.8, Mawsinram – 220.0, Khliehriat -151.8, Nongstoin- 98.0, Shillong- 82.2, Barapani – 71.4, Williamnagar – 70.0

Assam: Goalpara – 121.8, Dhubri-98.0, Goibergaon – 84.1, North Lakhimpur- 82.4, Tumulpur – 72.2, Tezpur -67.5

Arunachal Pradesh: Bhalukpong – 117.2, Bomdila- 99.0, Itanagar – 88.6, Ziro-88.0, Roing – 84.3, Passighat- 71.8

The severe weather associated with the system has ceased since yesterday night.

This is the Last update on the system.

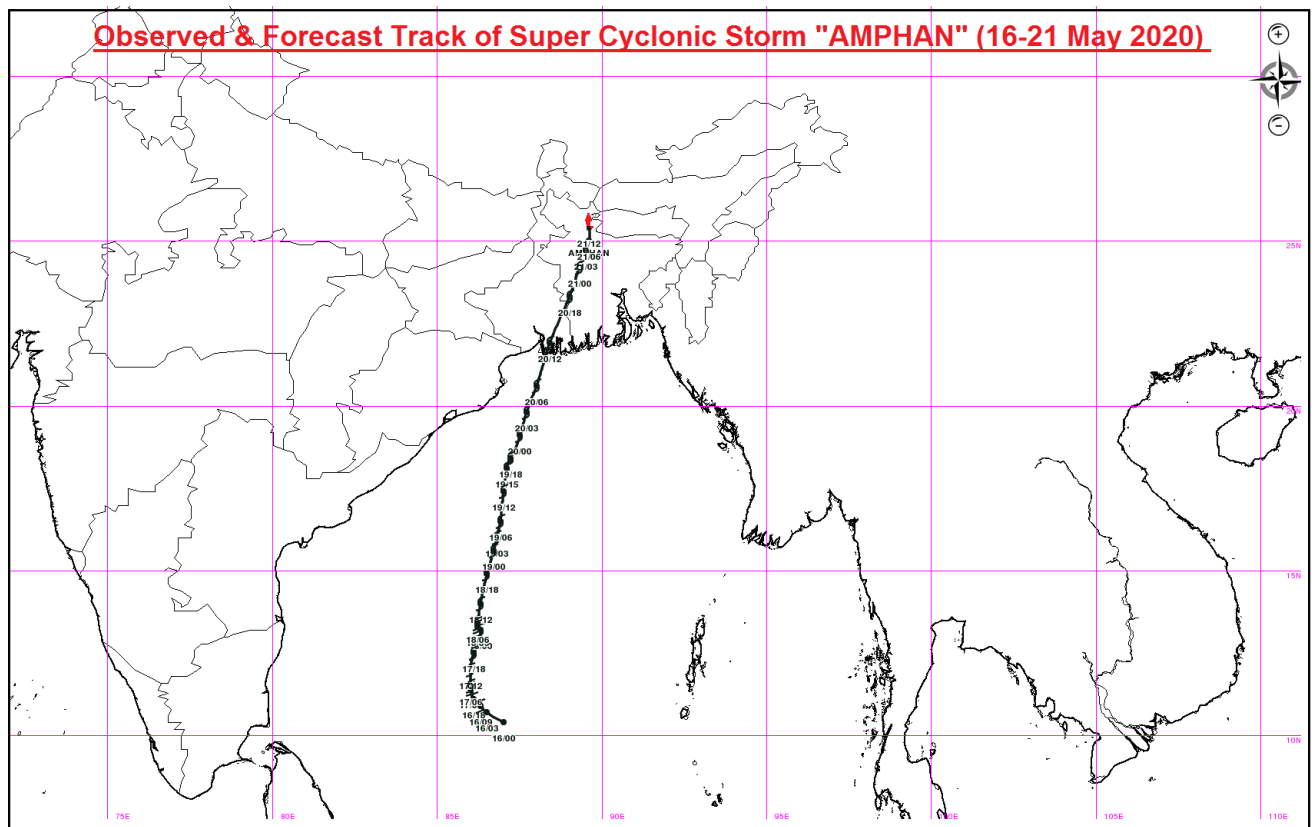
Kindly visit www.rsmcnewdelhi.imd.gov.in and www.mausam.imd.gov.in for routine weather information.

Contact: Cyclone Warning Division, Office of the Director General of Meteorology,
India Meteorological Department, Ministry of Earth Sciences.

Phone: (91) 11-24652484, FAX: (91) 11-24643128, 24623220, E-mail:cwdhq2008@gmail.com, Website: rsmcnewdelhi.imd.gov.in

Spatial rainfall distribution: Isolated: <25%, A few: 26-50%, Many: 51-75%, Most: 76-100%

Rainfall amount (mm): Heavy rain: 64.5 – 115.5, Very heavy rain: 115.6 – 204.4, Extremely heavy rain: 204.5 or more.



Contact: Cyclone Warning Division, Office of the Director General of Meteorology,
India Meteorological Department, Ministry of Earth Sciences.

Phone: (91) 11-24652484, FAX: (91) 11-24643128, 24623220, E-mail: cwdhq2008@gmail.com, Website: rsmcnewdelhi.imd.gov.in

Spatial rainfall distribution: Isolated: <25%, A few: 26-50%, Many: 51-75%, Most: 76-100%

Rainfall amount (mm): Heavy rain: 64.5 – 115.5. Very heavy rain: 115.6 – 204.4. Extremely heavy rain: 204.5 or more.