



सत्यमेव जयते
Government of India
Ministry of Earth Sciences



India Meteorological Department

PRESS RELEASE -3

Time of issue: 1400 hours IST

Dated: 22-10-2020

Sub: Depression over northwest & adjoining Westcentral Bay of Bengal off Odisha – north Andhra Pradesh coasts

Yesterday's Well Marked Low Pressure Area over westcentral Bay of Bengal (BoB) & neighbourhood concentrated into a depression over **northwest & adjoining westcentral BoB** in the morning (0830 hrs IST) of today, the 22nd October, 2020 near latitude 18.7°N and longitude 87.0°E, about 180 km south-southeast of Paradip (Odisha), 350 km south-southeast of Sagar Islands (West Bengal) and 490 km south-southwest of Khepupara (Bangladesh). It is very likely to intensify further into a Deep Depression during next 24 hours.

It is very likely to move north-northeastwards and cross West Bengal & adjoining Bangladesh coasts, as a Deep Depression between Sagar islands (West Bengal) & Khepupara (Bangladesh) over Sundarbans by 23rd October afternoon.

Forecast track and intensity are given in the following table:

Date/Time(IST)	Position (Lat. °N/ long. °E)	Maximum sustained surface wind speed (Kmph)	Category of cyclonic disturbance
22.10.20/0830	18.7/87.0	40-50 gusting to 60	Depression
22.10.20/1730	19.9/87.3	45-55 gusting to 65	Depression
23.10.20/0530	21.1/87.9	50-60 gusting to 70	Deep Depression
23.10.20/1730	22.3/88.6	50-60 gusting to 70	Deep Depression
24.10.20/0530	23.5/89.3	40-50 gusting to 60	Depression

Warnings:

(i) Rainfall warning (over Odisha, Gangetic West Bengal and north-eastern states)

- ✓ **22nd October 2020:** Light to moderate rainfall at most places with heavy to very heavy falls (**115.6-204.4 mm/day**) at a few places and extremely heavy falls (**>204.4 mm/day**) at isolated places very likely over Nagaland, Manipur, Mizoram & Tripura and Light to moderate rainfall at most places with heavy to very heavy falls at isolated places over coastal & adjoining districts of Odisha, Gangetic West Bengal and Assam & Meghalaya.
- ✓ **23rd October 2020:** Light to moderate rainfall at most places with heavy to very heavy falls (**115.6-204.4 mm/day**) at a few places and extremely heavy falls at isolated places very likely over Nagaland, Manipur, Mizoram & Tripura & Assam & Meghalaya and Light to moderate rainfall at many places with heavy to very heavy falls isolated places over coastal districts of Gangetic West Bengal and isolated heavy falls over extreme northern districts of Odisha.

Contact: Cyclone Warning Division, Office of the Director General of Meteorology,
India Meteorological Department, Ministry of Earth Sciences.

Phone: (91) 11-24652484, FAX: (91) 11-24643128, 24623220, E-mail: cwdhq2008@gmail.com, Website: rsmcnwdelhi.imd.gov.in

Spatial rainfall distribution: Isolated: <25%, A few: 26-50%, Many: 51-75%, Most: 76-100%

Rainfall amount (mm): Heavy rain: 64.5 – 115.5, Very heavy rain: 115.6 – 204.4, Extremely heavy rain: 204.5 or more.

- ✓ **24th October 2020:** Light to moderate rainfall at many places with **Isolated heavy falls** likely over Tripura & Mizoram and Assam & Meghalaya, Nagaland, Manipur, Mizoram & Tripura

(ii) Wind warning

- ✓ Squally winds speed reaching 40-50 kmph gusting to 60 kmph would occur over North Bay of Bengal and adjoining areas of Central Bay of Bengal on 22nd October and 50-60 kmph gusting to 70 kmph over North Bay of Bengal from 23rd morning till 24th Oct morning.
- ✓ Squally wind speed reaching 40-50 kmph gusting to 60 Kmph also very likely along & off north Andhra Pradesh coast on 22nd October; 45-55 kmph gusting to 65 Kmph along & off Odisha-West Bengal-Bangladesh coasts on 22nd; 50-60 kmph gusting to 70 kmph along & off north Odisha-West Bengal-Bangladesh coasts on 23rd October.

(iii) Sea condition

- ✓ Sea condition will be rough to very rough over Central & adjoining North Bay of Bengal on 22nd Oct; over North Bay of Bengal and adjoining Central Bay of Bengal on 23rd October, 2020.
- ✓ Sea condition will be rough to very rough along & off north Andhra Pradesh & South Odisha coasts during on 22nd October; and along & off north Odisha-West Bengal-Bangladesh coasts on 23rd October.

(iv) Fishermen Warning

Fishermen are advised not to venture into Westcentral Bay of Bengal and along & off Andhra Pradesh coast today, the 22nd October, and into North Bay of Bengal and along & off Odisha-West Bengal-Bangladesh coasts till 24th morning.

(v) Impact expected over coastal Districts of Odisha, West Bengal & Tripura on 22nd and Assam, Meghalaya, Nagaland, Manipur, Mizoram & Tripura on 23rd October, 2020:

- Localized Flooding of roads, water logging in low lying areas and closure of underpasses mainly in urban areas of the above region.
- Possibility of Landslides in hilly areas of Northeastern states.
- Occasional reduction in visibility due to heavy rainfall.
- Disruption of traffic in major cities.
- Minor damage to kutcha roads.
- Possibilities of damage to vulnerable structure.
- Damage to horticulture and standing crops in some areas due to inundation and squally winds.
- It may lead to riverine flooding in some river catchments (for riverine flooding. Kindly visit website of Central Water Commission (<http://www.cwc.gov.in/>))

Contact: Cyclone Warning Division, Office of the Director General of Meteorology,
India Meteorological Department, Ministry of Earth Sciences.

Phone: (91) 11-24652484, FAX: (91) 11-24643128, 24623220, E-mail: cwdhq2008@gmail.com, Website: rsmcnnewdelhi.imd.gov.in

Spatial rainfall distribution: Isolated: <25%, A few: 26-50%, Many: 51-75%, Most: 76-100%

Rainfall amount (mm): Heavy rain: 64.5 – 115.5, Very heavy rain: 115.6 – 204.4, Extremely heavy rain: 204.5 or more.

For specific district wise impact kindly visit IMD's state level meteorological center websites (https://mausam.imd.gov.in/imd_latest/contents/departmentalweb.php) and national website (<https://mausam.imd.gov.in/>).

(vi) Action Suggested:

- Attempt to protect Wildlife, Flora, Fauna, Sanctuaries in Sundarbans.
- Check for traffic congestion on your route before leaving for your destination.
- Follow any traffic advisories that are issued in this regard.
- Avoid going to areas that face water logging problem and squally winds.
- Avoid staying in vulnerable structure

The system is under continuous surveillance and the concerned state governments are being informed regularly.

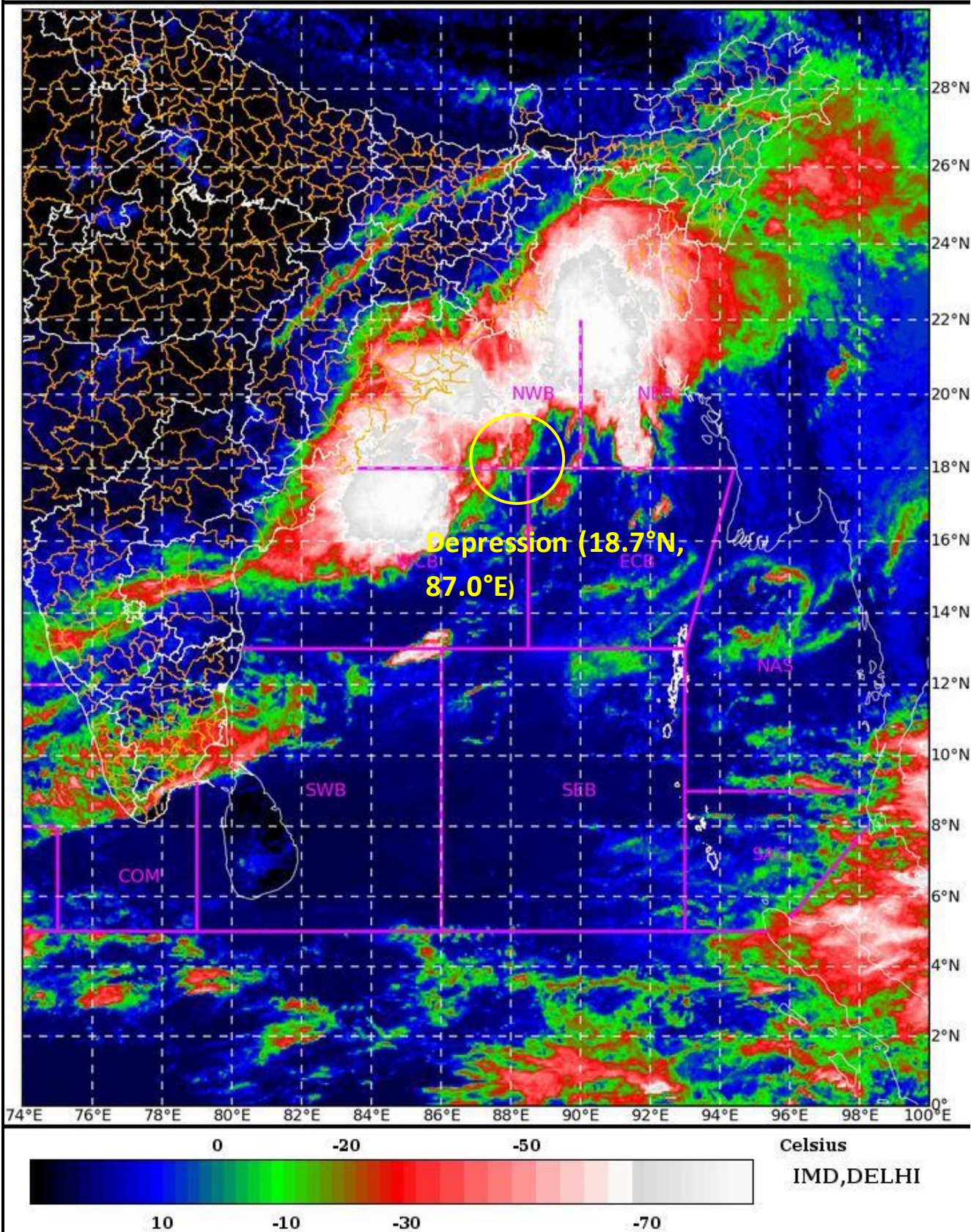
For details kindly visit www.rsmcnewdelhi.imd.gov.in, www.imd.gov.in

SAT : INSAT-3D IMG 22-10-2020/(0600 to 0627) GMT

IMG_TIR1_TEMP 10.8 um 22-10-2020/(1130 to 1157) IST



L1C Mercator



Contact: Cyclone Warning Division, Office of the Director General of Meteorology,
India Meteorological Department, Ministry of Earth Sciences.

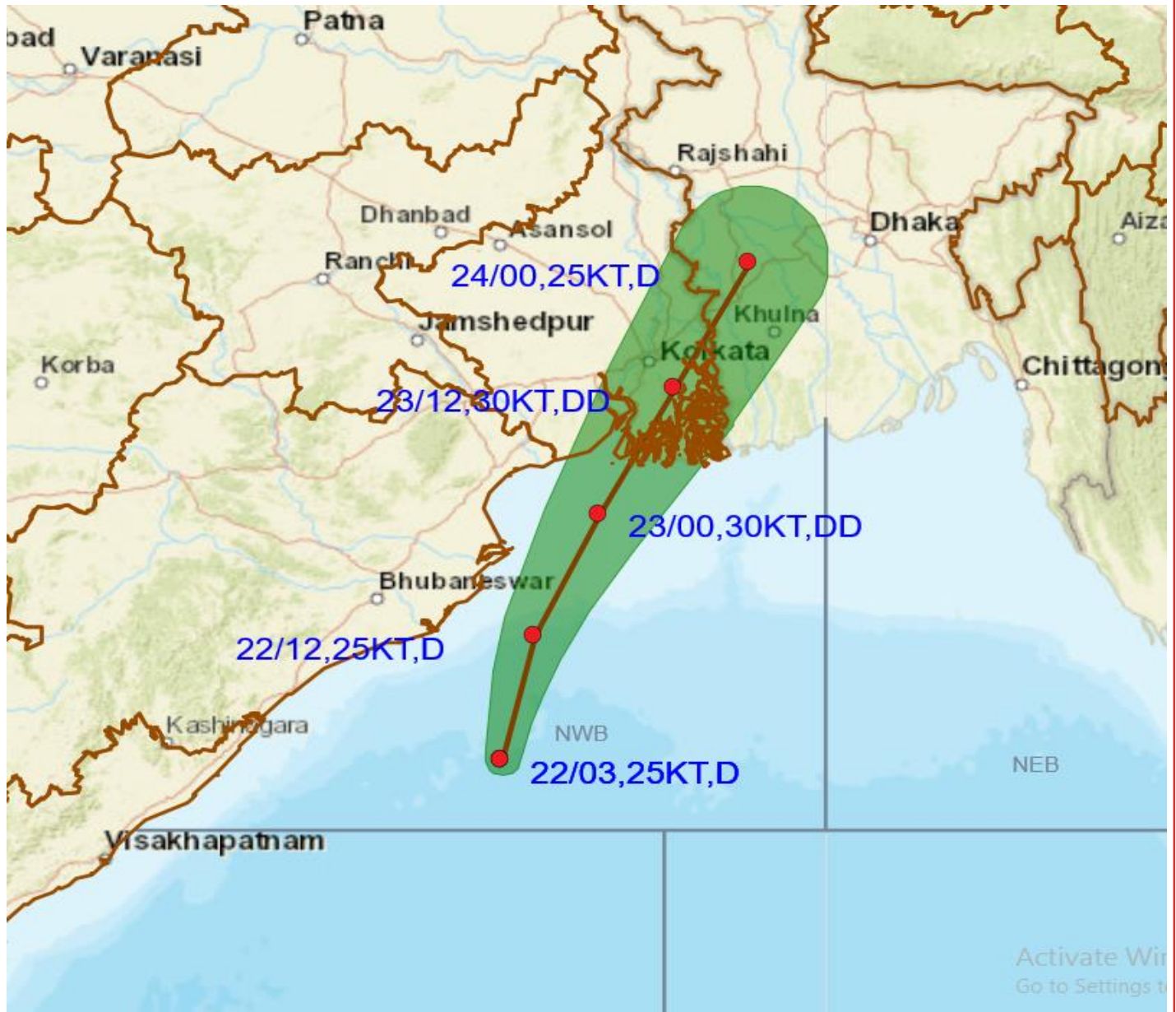
Phone: (91) 11-24652484, FAX: (91) 11-24643128, 24623220, E-mail: cwdhq2008@gmail.com, Website: rsmcnewdelhi.imd.gov.in

Spatial rainfall distribution: Isolated: <25%, A few: 26-50%, Many: 51-75%, Most: 76-100%

Rainfall amount (mm): Heavy rain: 64.5 – 115.5, Very heavy rain: 115.6 – 204.4, Extremely heavy rain: 204.5 or more.



**OBSERVED AND FORECAST TRACK ALONGWITH CONE OF
UNCERTAINTY OF DEPRESSION OVER BAY OF BENGAL BASED ON
0300 UTC OF 22nd OCT, 2020**

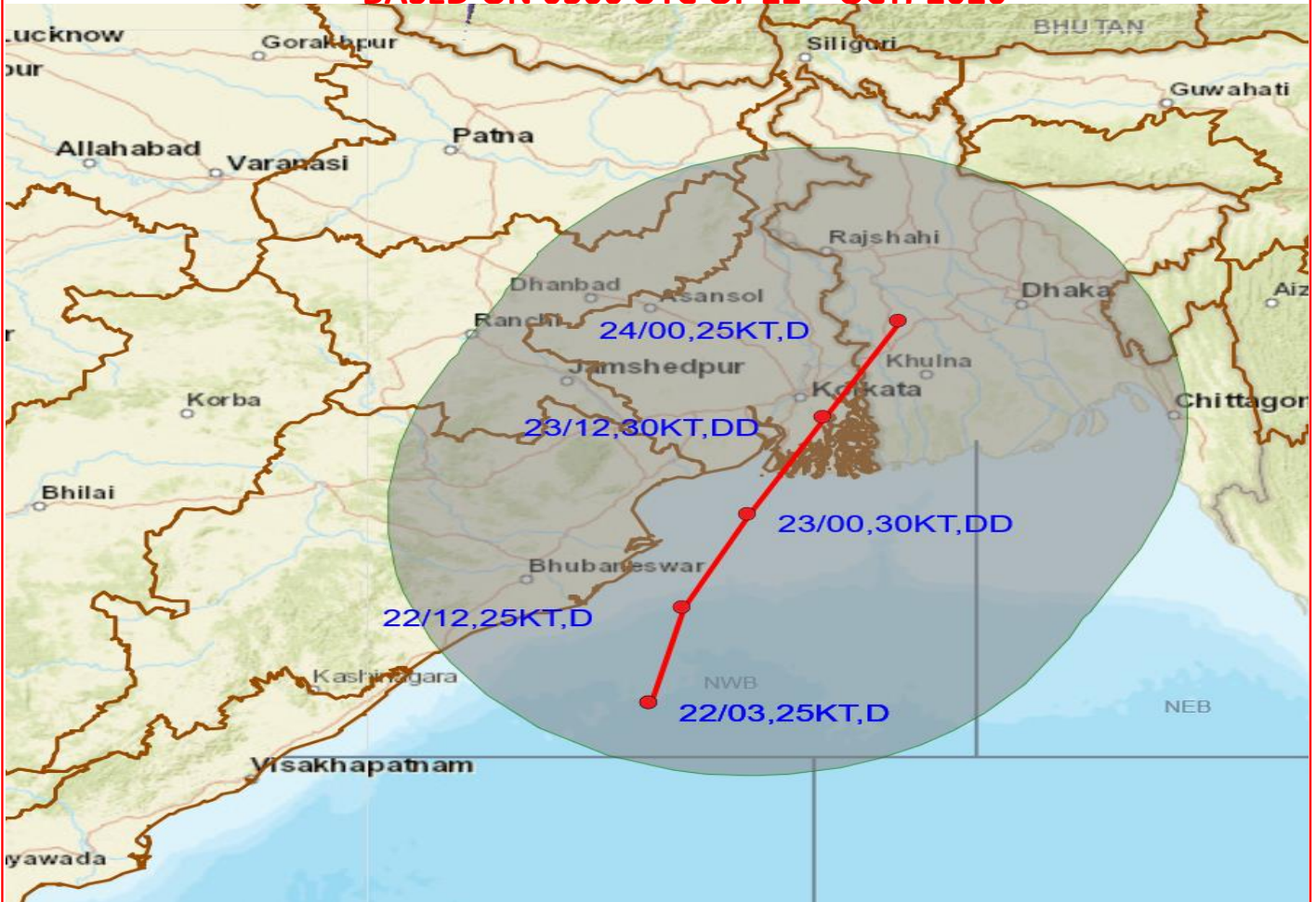


DATE/TIME IN UTC
 IST=UTC + 0530
 L: LOW PRESSURE AREA
 WML: WELL MARKED LOW PRESSURE AREA
 D: DEPRESSION (17-27 KT)
 DD: DEEP DEPRESSION (28-33 KT)
 CS: CYCLONIC STORM (34-47 KT)
 SCS: SEVERE CYCLONIC STORM (48-63KT)
 VSCS: VERY SEVERE CYCLONIC STORM (64-89 KT)
 ESCS: EXTREMELY SEVERE CYCLONIC STORM (90-119 KT)
 SuCS: SUPER CYCLONIC STORM (\geq 120 KT)

- LESS THAN 34 KT
- 34-47 KT
- \geq 48 KT
- OBSERVED TRACK
- FORECAST TRACK
- CONE OF UNCERTAINTY



OBSERVED AND FORECAST TRACK ALONGWITH QUADRANT WIND DISTRIBUTION OF DEPRESSION OVER BAY OF BENGAL BASED ON 0300 UTC OF 22nd OCT. 2020



DATE/TIME IN UTC
 IST=UTC + 0530
 L: LOW PRESSURE AREA
 WML: WELL MARKED LOW PRESSURE AREA
 D: DEPRESSION (17-27 KT)
 DD: DEEP DEPRESSION (28-33 KT)
 CS: CYCLONIC STORM (34-47 KT)
 SCS: SEVERE CYCLONIC STORM (48-63KT)
 VSCS: VERY SEVERE CYCLONIC STORM (64-89 KT)
 ESCS: EXTREMELY SEVERE CYCLONIC STORM (90-119 KT)
 SuCS: SUPER CYCLONIC STORM (≥ 120 KT)

- LESS THAN 34 KT
- 34-47 KT
- ≥ 48 KT
- OBSERVED TRACK
- FORECAST TRACK
- CONE OF UNCERTAINTY

IMPACT OVER THE SEA

MSW (knot/kmph)	Impact	Action
28-33 (52-61)	Very rough seas	Total suspension of fishing operations
34-49 (62-91)	High to very high seas	Total suspension of fishing operations
50-63 (92-117)	Very high seas	Total suspension of fishing operations
≥ 64 (≥ 118)	Phenomenal	Total suspension of fishing operations

Contact: Cyclone Warning Division, Office of the Director General of Meteorology,

India Meteorological Department, Ministry of Earth Sciences.

Phone: (91) 11-24652484, FAX: (91) 11-24643128, 24623220, E-mail: cwdhq2008@gmail.com, Website: rsmcnwedelhi.imd.gov.in

Spatial rainfall distribution: Isolated: <25%, A few: 26-50%, Many: 51-75%, Most: 76-100%

Rainfall amount (mm): Heavy rain: 64.5 – 115.5, Very heavy rain: 115.6 – 204.4, Extremely heavy rain: 204.5 or more.