



Government of India  
Ministry of Earth Sciences  
Earth System Science Organisation



Earth System Science Organisation  
India Meteorological Department

## PRESS RELEASE-1

Time of issue: 1220 hours IST

Dated: 22-09-2019

### Sub: Depression over eastcentral and adjoining northeast Arabian Sea off Gujarat coast

Latest satellite imageries and surface observations indicate that a depression has formed over eastcentral and adjoining northeast Arabian sea off Gujarat coast and lay centred at 0830 hrs IST of today, the 22<sup>nd</sup> September, 2019 near latitude 19.8°N and longitude 69.4°E, about 150 km southwest of Veraval (Gujarat), 610 km south-southeast of Karachi (Pakistan) and 1220 km east-southeast of Muscat (Oman).

It is very likely to intensify further into a deep depression during next 12 hours and into a cyclonic storm during subsequent 24 hours. It is very likely to move west-northwestwards towards Oman coast during next 72 hours.

#### Warnings:

##### (i) Heavy rainfall warning:

- Light to moderate rainfall at many places with isolated heavy falls is likely over coastal districts of Saurashtra and Kutch during next 24 hours and decrease thereafter.

##### (ii) Wind warning

- Squally wind speed reaching 45-55 kmph gusting to 65 kmph very likely to prevail along & off Gujarat coast during next 48 hours.
- Squally wind speed reaching 45-55 kmph gusting to 65 kmph very likely to prevail over eastcentral and adjoining northeast Arabian Sea which is likely to become 55-65 kmph gusting to 75 kmph from today, the 22<sup>nd</sup> evening. It is likely to become gale wind speed reaching 65-75 kmph gusting to 85 kmph over northeast and adjoining eastcentral Arabian Sea from 23<sup>rd</sup> evening for subsequent 24 hours. It is likely to decrease thereafter gradually becoming squally wind speed reaching 55-65 kmph gusting to 75 kmph over northwest and adjoining westcentral Arabian Sea from 24<sup>th</sup> evening.

##### (iii) Sea condition

- The sea condition is very likely to be very rough along & off Gujarat coast during next 48 hours. It is also very likely to be very rough over eastcentral and adjoining northeast Arabian Sea on 22<sup>nd</sup> and becoming very rough to high from 23<sup>rd</sup> evening for subsequent 24 hours. It would become very rough over northwest and adjoining westcentral Arabian Sea from 23<sup>rd</sup> evening for subsequent 48 hours.

##### (iv) Fishermen Warning

- The fishermen are advised not to venture into eastcentral and adjoining northeast Arabian along & off Gujarat coast during next 48 hours. They are advised not to venture into eastcentral and adjoining northeast Arabian Sea during next 48 hours and into westcentral & adjoining northwest Arabian Sea during 23<sup>rd</sup> evening and 25<sup>th</sup>.

The system is under continuous surveillance and concerned state governments are being informed regularly.

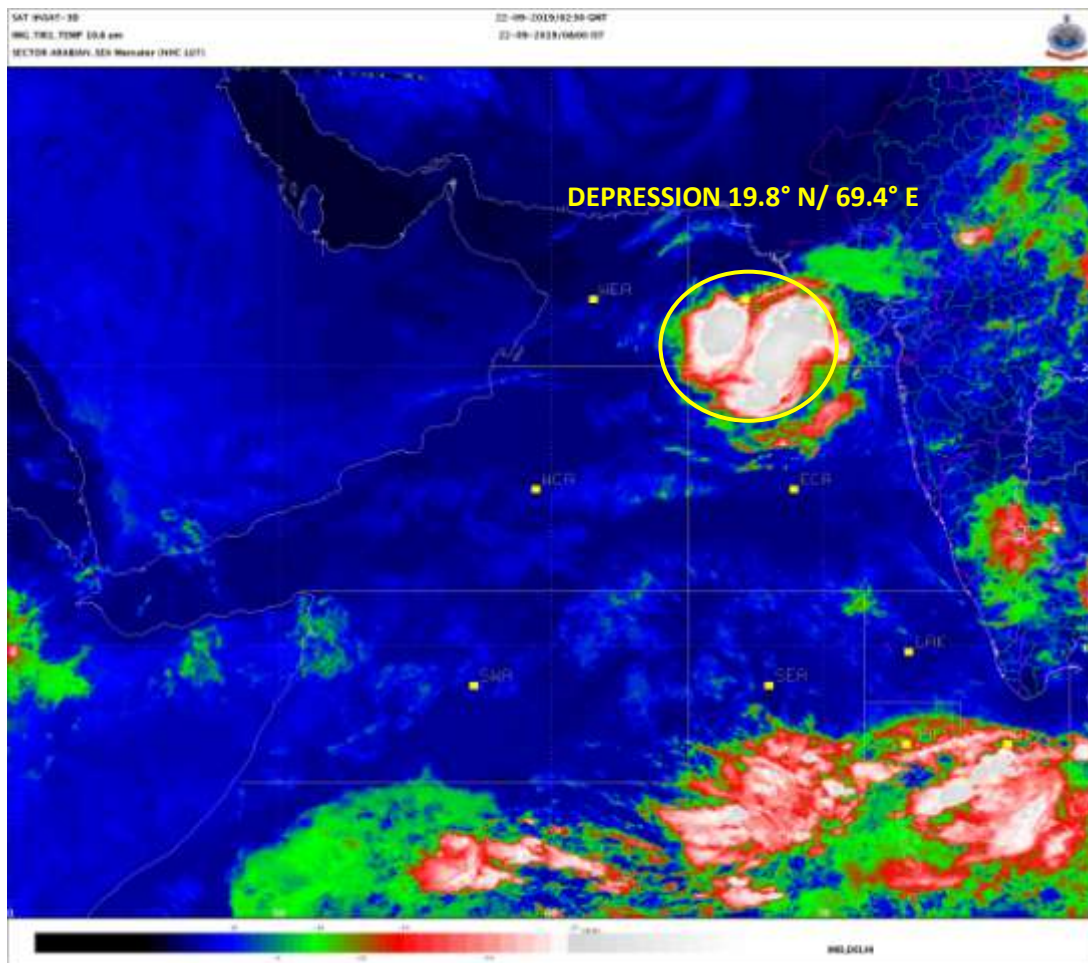
Kindly visit [www.imd.gov.in](http://www.imd.gov.in), [www.rsmcnewdelhi.imd.gov.in](http://www.rsmcnewdelhi.imd.gov.in) and [www.mausam.imd.gov.in](http://www.mausam.imd.gov.in) for updates on the system.

Contact: Cyclone Warning Division, Office of the Director General of Meteorology,  
India Meteorological Department, Ministry of Earth Sciences.

Phone: (91) 11-24652484, FAX: (91) 11-24643128, 24623220, E-mail: [cwdhq2008@gmail.com](mailto:cwdhq2008@gmail.com), Website: [rsmcnewdelhi.imd.gov.in](http://rsmcnewdelhi.imd.gov.in)

Spatial rainfall distribution: Isolated: <25%, A few: 26-50%, Many: 51-75%, Most: 76-100%

Rainfall amount (mm): Heavy rain: 64.5 – 115.5, Very heavy rain: 115.6 – 204.4, Extremely heavy rain: 204.5 or more.

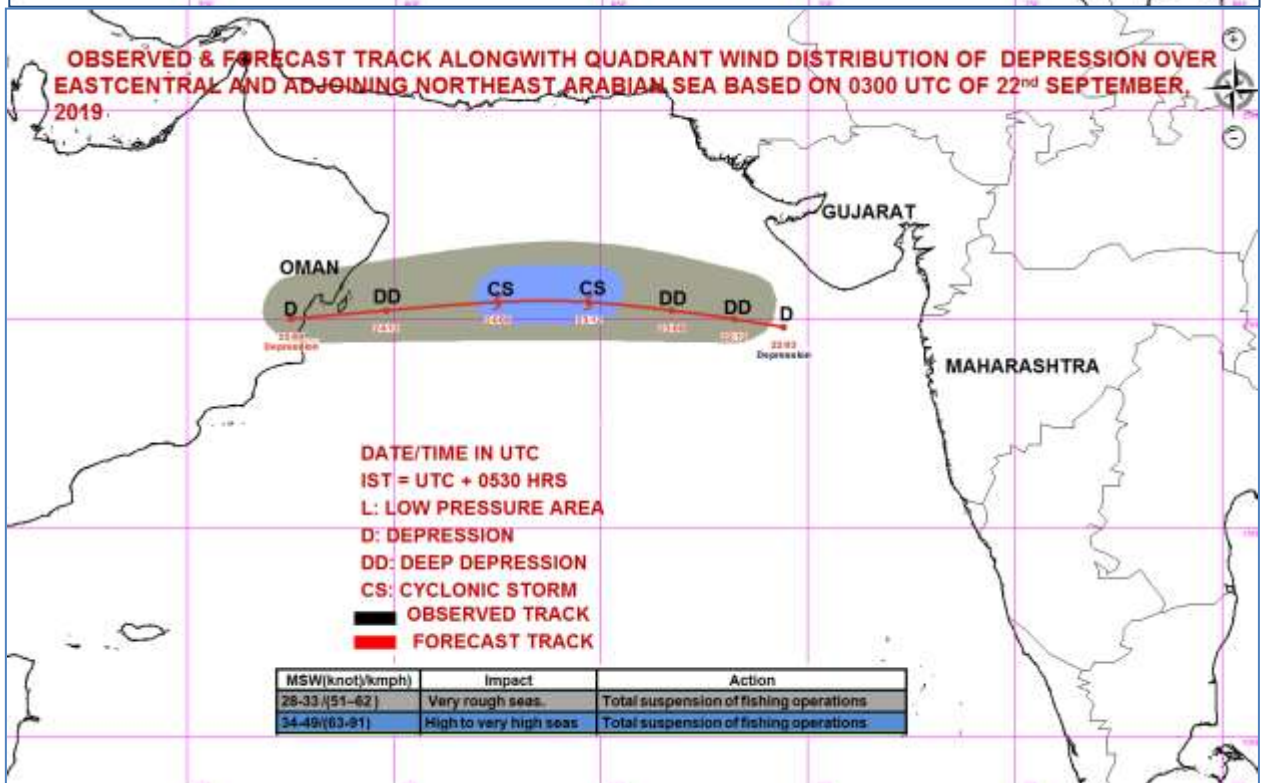
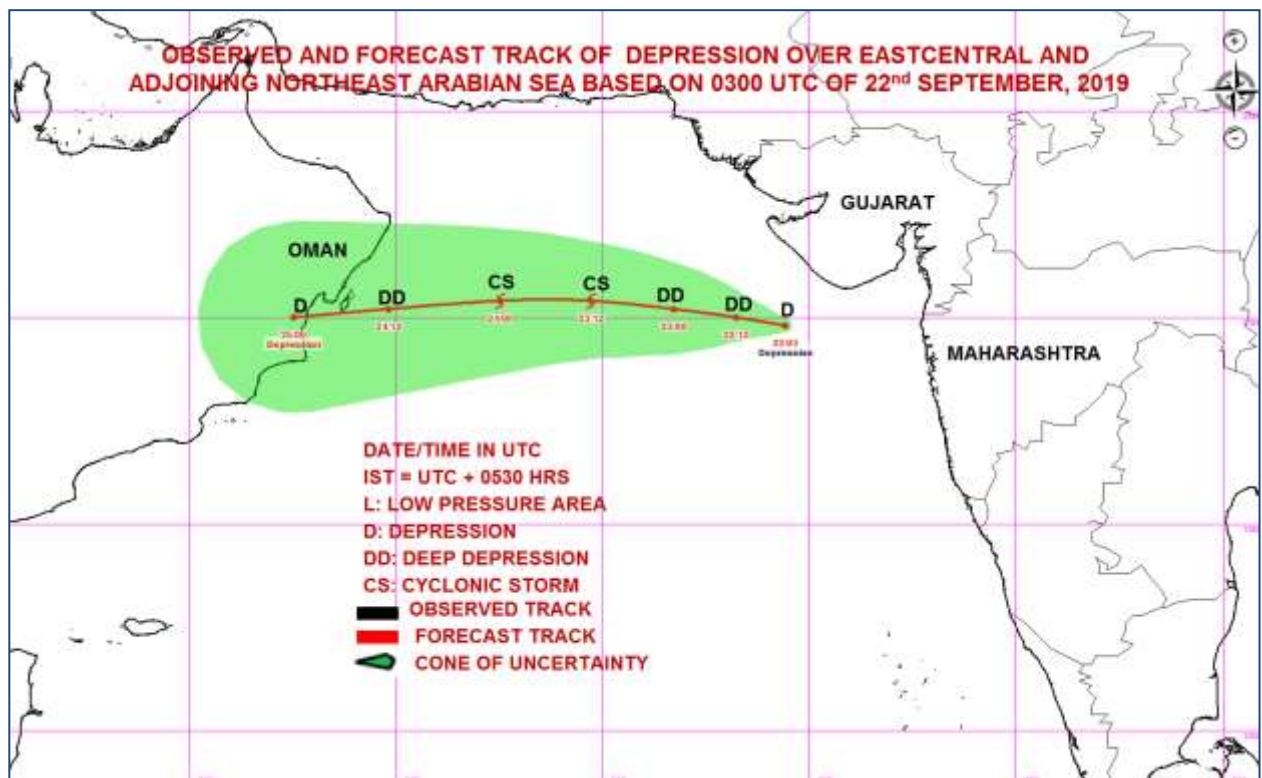


Contact: Cyclone Warning Division, Office of the Director General of Meteorology,  
India Meteorological Department, Ministry of Earth Sciences.

Phone: (91) 11-24652484, FAX: (91) 11-24643128, 24623220, E-mail: [cwdhq2008@gmail.com](mailto:cwdhq2008@gmail.com), Website: [rsmcnewdelhi.imd.gov.in](http://rsmcnewdelhi.imd.gov.in)

Spatial rainfall distribution: Isolated: <25%, A few: 26-50%, Many: 51-75%, Most: 76-100%

Rainfall amount (mm): Heavy rain: 64.5 – 115.5, Very heavy rain: 115.6 – 204.4, Extremely heavy rain: 204.5 or more.



Contact: Cyclone Warning Division, Office of the Director General of Meteorology,  
 India Meteorological Department, Ministry of Earth Sciences.

Phone: (91) 11-24652484, FAX: (91) 11-24643128, 24623220, E-mail: cwdhq2008@gmail.com, Website: [rsmcnewdelhi.imd.gov.in](http://rsmcnewdelhi.imd.gov.in)

Spatial rainfall distribution: Isolated: <25%, A few: 26-50%, Many: 51-75%, Most: 76-100%

Rainfall amount (mm): Heavy rain: 64.5 – 115.5, Very heavy rain: 115.6 – 204.4, Extremely heavy rain: 204.5 or more.