



सत्यमेव जयते
Government of India
Ministry of Earth Sciences



India Meteorological Department

PRESS RELEASE - 5

Time of issue: 1400 hours IST

Dated: 24-10-2020

Sub: Depression weakened into a well marked low pressure area over Bangladesh

Yesterday's depression over coastal Bangladesh moved further north-northeastwards and weakened into a **well marked low pressure area** over central Bangladesh & neighbourhood in the early morning (0530 hrs IST) of today the 24th October 2020. It is likely to become insignificant by tomorrow over the same region.

Heavy Rainfall warning

Light to moderate rainfall at many places with **isolated heavy falls** (>6.5 cm per day) are likely over south Assam, Meghalaya, Manipur, Mizoram & Tripura during next 24 hours.

Realised rainfall ending at 0830 hours IST of dates during 21st October-24th October in association with this system is given below.

21 October 2020

Rayalaseema: Lakkireddipalle-10, Amarapuram-8, Penagaluru & Thambalapalle-7each

22 October 2020

Assam & Meghalaya:- A P Ghat-8,

Odisha:- Paradip & Tihidi-7 each

Telangana:- Ghattu-9,

23 October 2020

Assam & Meghalaya:- Mawsynram-13, Sohra (RKM)-12, Sohra-11, Bakulia-8,

Nagaland, Manipur, Mizoram & Tripura:- Sabroom-8, Lawngtlai-7

24 October 2020

Assam & Meghalaya:- Sohra (RKM)-30, Sohra-29, Shillong-17, Nongstein-16, Barapani-13, Kamrup & Dharamtul-10 each, Bhaghmara-6

Nagaland, Manipur, Mizoram & Tripura:- KVK Dhalai- 13, Kailashahar-9, Gandecherra & Udaipur-7 each.

This is last press release in association with this system. However regular weather warning bulletins will be continued from National Weather Forecasting Centre and Regional & State Meteorological Centres till the system becomes insignificant.

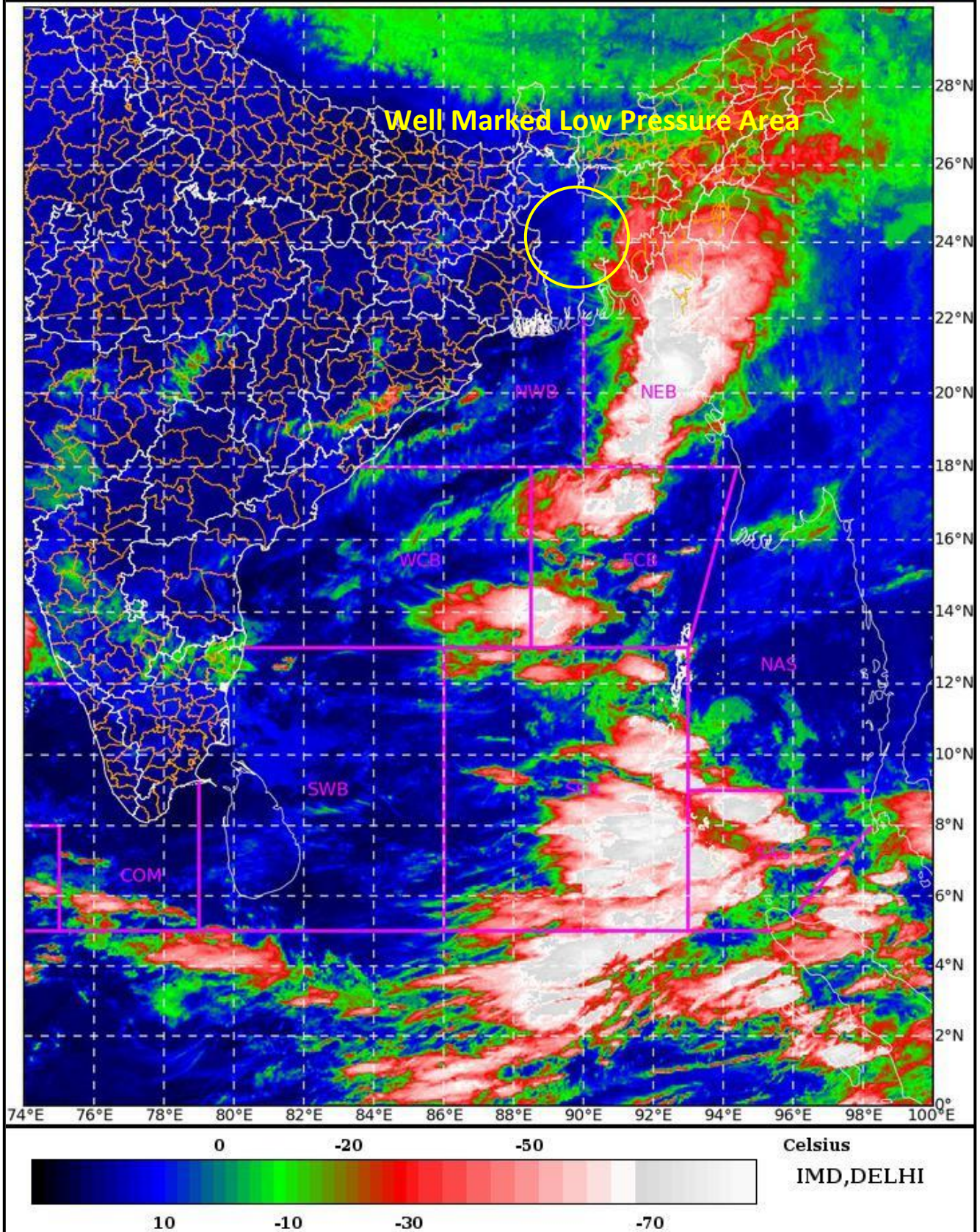
Contact: Cyclone Warning Division, Office of the Director General of Meteorology,
India Meteorological Department, Ministry of Earth Sciences.

Phone: (91) 11-24652484, FAX: (91) 11-24643128, 24623220, E-mail: cwdhq2008@gmail.com, Website: rsmcnwdelhi.imd.gov.in

Spatial rainfall distribution: Isolated: <25%, A few: 26-50%, Many: 51-75%, Most: 76-100%

Rainfall amount (mm): Heavy rain: 64.5 – 115.5, Very heavy rain: 115.6 – 204.4, Extremely heavy rain: 204.5 or more.

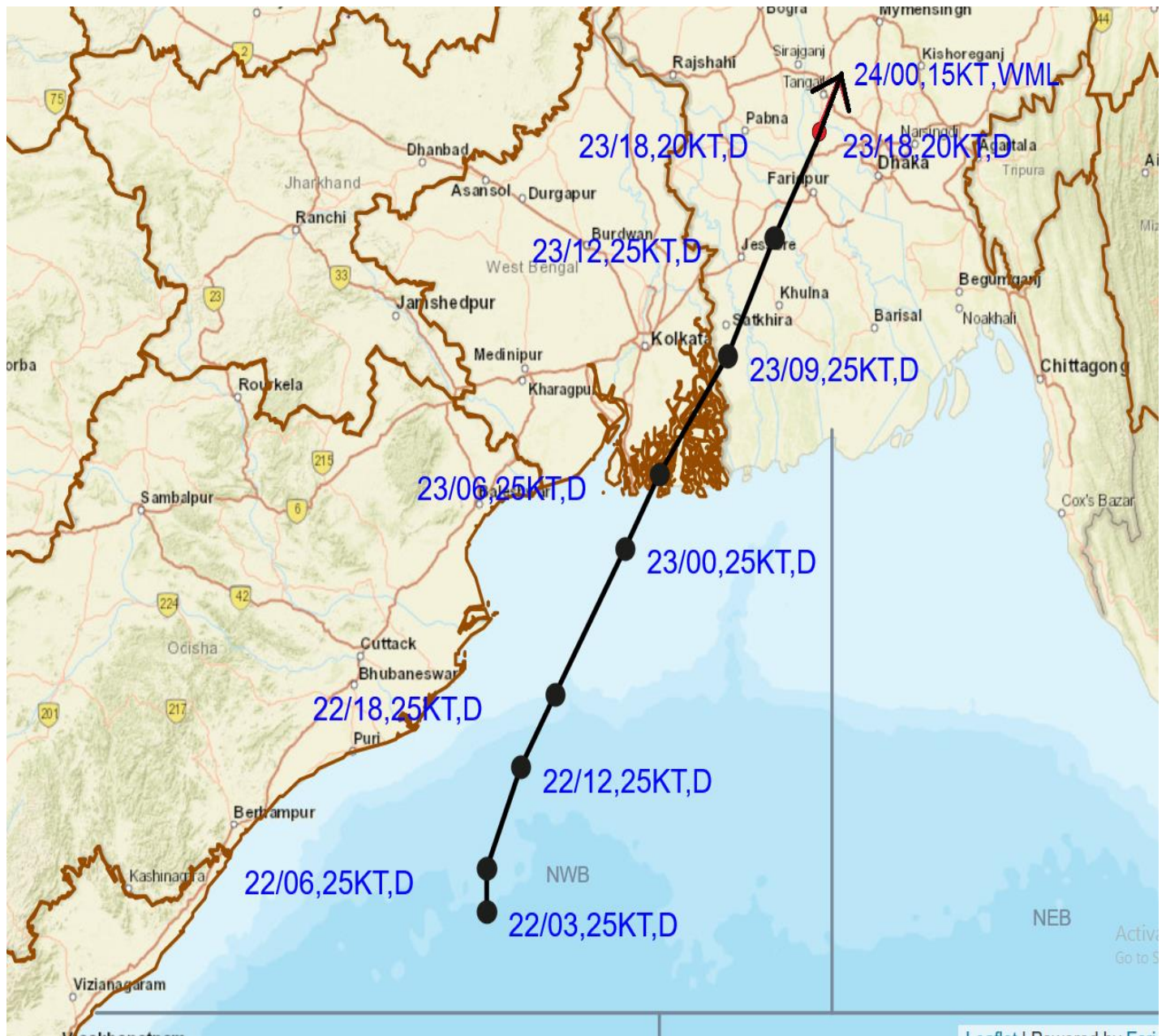
SAT : INSAT-3DR IMG 24-10-2020/(0045 to 0112) GMT
IMG_TIR1_TEMP 10.8 um 24-10-2020/(0615 to 0642) IST
L1C Mercator



Contact: Cyclone Warning Division, Office of the Director General of Meteorology,
India Meteorological Department, Ministry of Earth Sciences.
Phone: (91) 11-24652484, FAX: (91) 11-24643128, 24623220, E-mail: cwdhq2008@gmail.com, Website: smcnewdelhi.imd.gov.in
Spatial rainfall distribution: Isolated: <25%, A few: 26-50%, Many: 51-75%, Most: 76-100%
Rainfall amount (mm): Heavy rain: 64.5 – 115.5, Very heavy rain: 115.6 – 204.4, Extremely heavy rain: 204.5 or more.



OBSERVED TRACK OF DEPRESSION OVER BAY OF BENGAL DURING 22-24 OCTOBER 2020



DATE/TIME IN UTC
IST=UTC + 0530
L: LOW PRESSURE AREA
WML: WELL MARKED LOW PRESSURE AREA
D: DEPRESSION (17-27 KT)
DD: DEEP DEPRESSION (28-33 KT)
CS: CYCLONIC STORM (34-47 KT)
SCS: SEVERE CYCLONIC STORM (48-63KT)
VSCS: VERY SEVERE CYCLONIC STORM (64-89 KT)
ECS: EXTREMELY SEVERE CYCLONIC STORM (90-119 KT)
SuCS: SUPER CYCLONIC STORM (\geq 120 KT)

- LESS THAN 34 KT
- 34-47 KT
- \geq 48 KT
- OBSERVED TRACK
- FORECAST TRACK
- CONE OF UNCERTAINTY

Contact: Cyclone Warning Division, Office of the Director General of Meteorology,
India Meteorological Department, Ministry of Earth Sciences.
Phone: (91) 11-24652484, FAX: (91) 11-24643128, 24623220, E-mail: cwdhq2008@gmail.com, Website: smcnewdelhi.imd.gov.in
Spatial rainfall distribution: Isolated: <25%, A few: 26-50%, Many: 51-75%, Most: 76-100%
Rainfall amount (mm): Heavy rain: 64.5 – 115.5, Very heavy rain: 115.6 – 204.4, Extremely heavy rain: 204.5 or more.