



Government of India
Ministry of Earth Sciences
Earth System Science Organisation



Earth System Science Organisation
India Meteorological Department

PRESS RELEASE-4

Time of issue: 1200 hours IST

Dated: 25-09-2019

Sub: Very severe cyclonic storm “Hikaa” weakened into a deep depression over Oman

Yesterday’s very severe cyclonic storm “HIKAA” over northwest and adjoining westcentral Arabian Sea moved nearly westwards and crossed Oman coast near latitude 19.7°N and longitude 57.7°E, close to north of Duqm in the same evening (between 1930 and 2030 hours IST of 24th September) as a very severe cyclonic storm with maximum sustained wind speed of 120-130 kmph gusting to 145 kmph. Continuing to move westwards, it further weakened into a severe cyclonic storm over coastal Oman in the same night (2030 hours IST of 24th September). Moving further westwards, it weakened into a cyclonic storm over Oman in the early morning (0230 hours IST) and into a deep depression over Oman near latitude 19.5°N and longitude 55.5°E about 220 km west of Duqm and 110 km west-southwest of Haima in the morning (0830 hours IST) of today, the 25th September, 2019.

It is very likely to move west-southwestwards, weaken into a depression during next three hours and into a well-marked low during subsequent three hours.

.Forecast track and intensity are given in the following table:

Date/Time(IST)	Position (Lat. °N/ long. °E)	Maximum sustained surface wind speed (Kmph)	Category of cyclonic disturbance
25.09.19/0830	19.5/55.5	50-60 gusting to 70	Deep Depression
25.09.19/1130	19.4/55.0	35-45 gusting to 55	Depression
25.09.19/1730	19.3/53.9	20-30 gusting to 40	Low

Warnings:

(i) Wind warning

Squally wind, speed reaching 40-50 kmph gusting to 60 kmph is prevailing over westcentral and adjoining northwest Arabian Sea along & off Oman coast during next six hours and decrease thereafter.

(ii) Sea condition

The Sea conditions will be rough over westcentral and adjoining northwest Arabian Sea along & off Oman coast during next six hours and improve thereafter.

(iii) Fishermen Warning

The fishermen are advised not to venture into westcentral and adjoining northwest Arabian Sea along and off Oman coast during next six hours.

The system is under continuous surveillance and concerned state governments are being informed regularly.

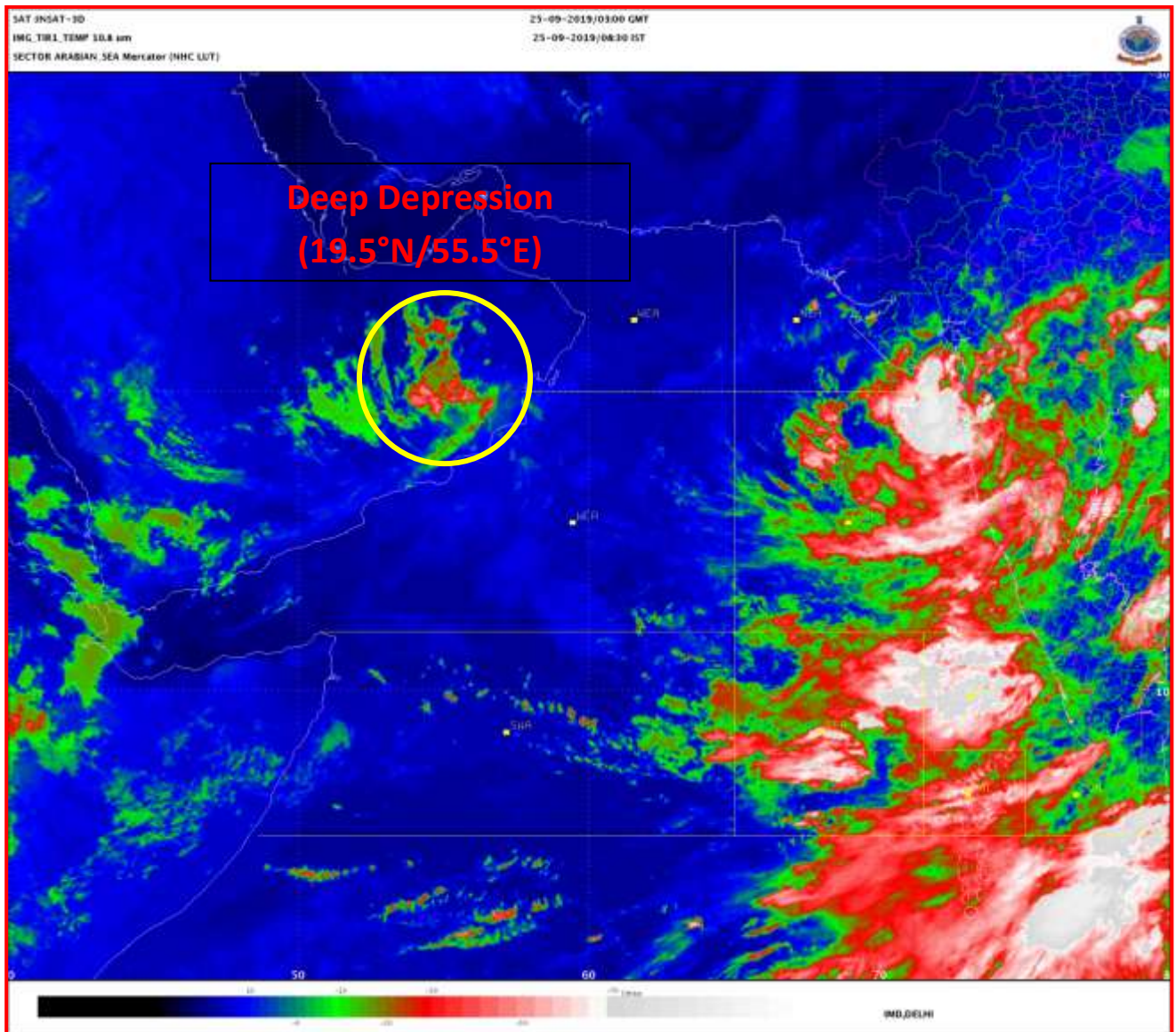
Contact: Cyclone Warning Division, Office of the Director General of Meteorology,
India Meteorological Department, Ministry of Earth Sciences.

Phone: (91) 11-24652484, FAX: (91) 11-24643128, 24623220, E-mail: cwdhq2008@gmail.com, Website: rsmcnewdelhi.imd.gov.in

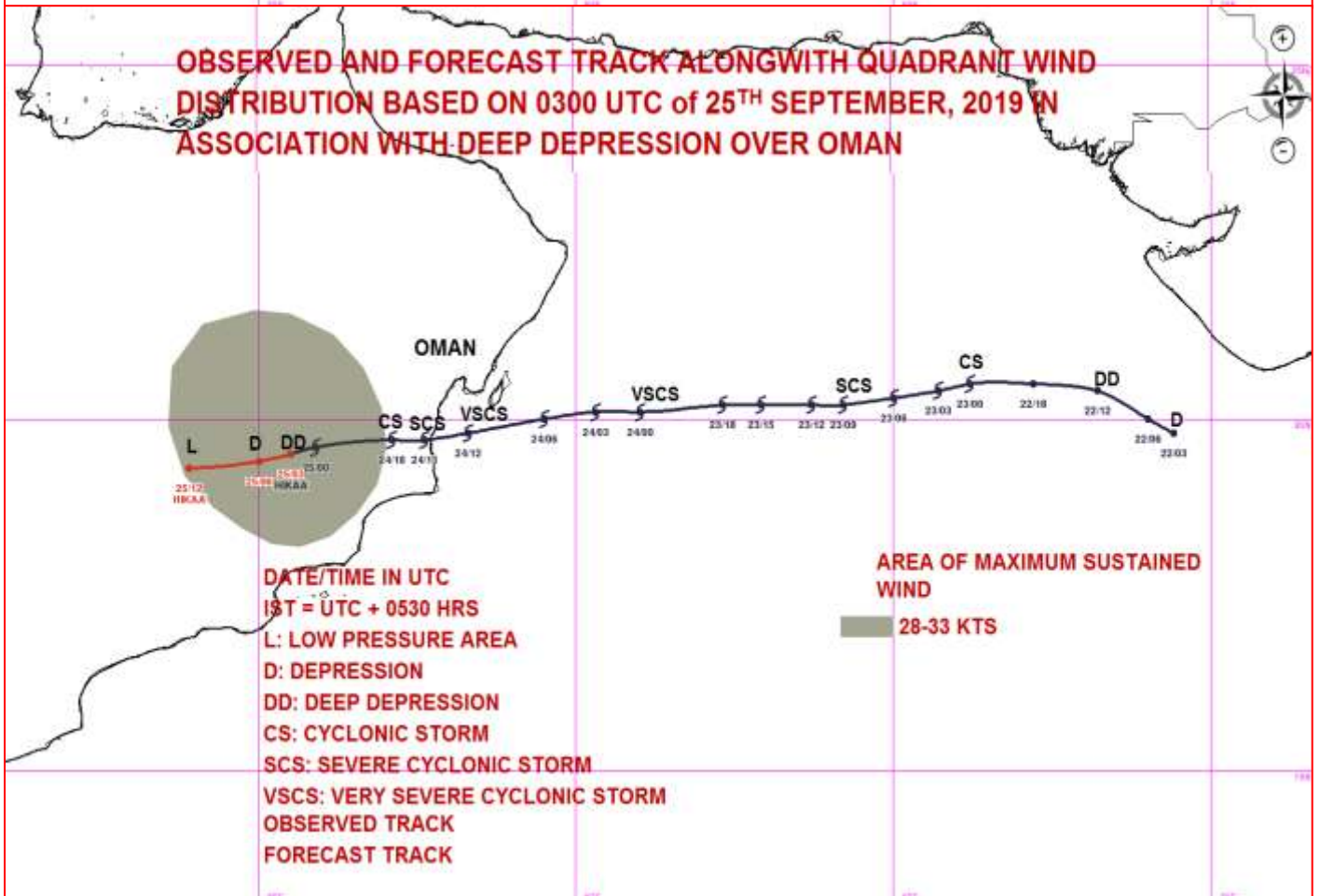
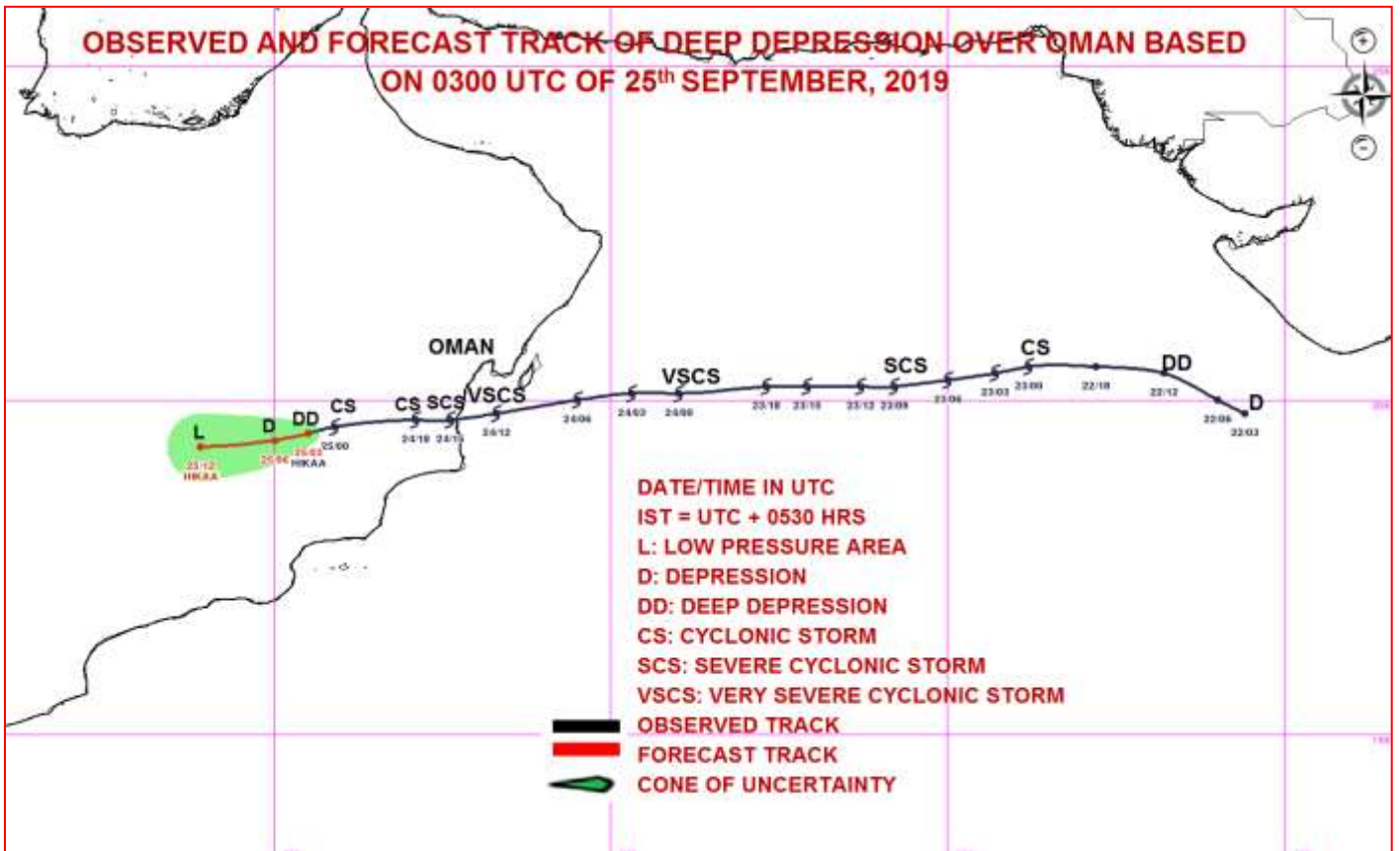
Spatial rainfall distribution: Isolated: <25%, A few: 26-50%, Many: 51-75%, Most: 76-100%

Rainfall amount (mm): Heavy rain: 64.5 – 115.5, Very heavy rain: 115.6 – 204.4, Extremely heavy rain: 204.5 or more.

This is last Press Release in association with this system. However, regular bulletins shall continue from National Weather Forecasting Centre, New Delhi. For further updates kindly visit www.imd.gov.in, www.rsmcnewdelhi.imd.gov.in, www.mausam.gov.in



Contact: Cyclone Warning Division, Office of the Director General of Meteorology,
India Meteorological Department, Ministry of Earth Sciences.
Phone: (91) 11-24652484, FAX: (91) 11-24643128, 24623220, E-mail: cwdhq2008@gmail.com, Website: rsmcnewdelhi.imd.gov.in
Spatial rainfall distribution: Isolated: <25%, A few: 26-50%, Many: 51-75%, Most: 76-100%
Rainfall amount (mm): Heavy rain: 64.5 – 115.5, Very heavy rain: 115.6 – 204.4, Extremely heavy rain: 204.5 or more.



Contact: Cyclone Warning Division, Office of the Director General of Meteorology,
 India Meteorological Department, Ministry of Earth Sciences.

Phone: (91) 11-24652484, FAX: (91) 11-24643128, 24623220, E-mail: cwdhq2008@gmail.com, Website: rsmcnewdelhi.imd.gov.in

Spatial rainfall distribution: Isolated: <25%, A few: 26-50%, Many: 51-75%, Most: 76-100%

Rainfall amount (mm): Heavy rain: 64.5 – 115.5, Very heavy rain: 115.6 – 204.4, Extremely heavy rain: 204.5 or more.