



Government of India
Ministry of Earth Sciences
Earth System Science Organisation



Earth System Science Organisation
India Meteorological Department

PRESS RELEASE-2

Time of issue: 1145 hours IST

Dated: 25-10-2019

Sub: Depression intensified into Cyclonic Storm 'Kyarr' (Pronounced as Kyarr) over eastcentral Arabian Sea

Yesterday's depression over eastcentral Arabian Sea moved east-northeastwards and intensified into a deep depression in the same evening (1730 hours IST) over the same region. Moving further northeastwards, it intensified into cyclonic storm "KYARR" (pronounced as KYARR) in the early morning (0530 hours IST) of today, the 25th October over eastcentral Arabian Sea. It lay centered at 0830 hrs IST of today, the 25th October, 2019 near latitude 16.0°N and longitude 71.6°E over eastcentral Arabian Sea, about 210 km west-southwest of Ratnagiri (Maharashtra), 370 km south-southwest of Mumbai (Maharashtra) and 1870 km east-southeast of Salalah (Oman).

It is very likely to move nearly northwards during next 12 hours and then move west-northwestwards towards Oman coast during subsequent 5 days. It is very likely to intensify into a Severe Cyclonic Storm during next 12 hours and into a Very Severe Cyclonic Storm during subsequent 24 hours.

Forecast track and intensity are given in the following table:

Date/Time(IST)	Position (Lat. °N/ long. °E)	Maximum sustained surface wind speed (Kmph)	Category of cyclonic disturbance
25.10.19/0830	16.0/71.6	70-80 gusting to 90	Cyclonic Storm
25.10.19/1130	16.1/71.8	80-90 gusting to 100	Cyclonic Storm
25.10.19/1730	16.2/72.0	90-100 gusting to 110	Severe Cyclonic Storm
25.10.19/2330	16.4/71.8	100-110 gusting to 120	Severe Cyclonic Storm
26.10.19/0530	16.6/70.6	125-135 gusting to 150	Very Severe Cyclonic Storm
26.10.19/1730	16.9/69.2	150-160 gusting to 175	Very Severe Cyclonic Storm
27.10.19/0530	17.3/68.0	170-180 gusting to 200	Extremely Severe Cyclonic Storm
27.10.19/1730	17.8/66.5	170-180 gusting to 200	Extremely Severe Cyclonic Storm
28.10.19/0530	18.3/65.1	165-175 gusting to 195	Extremely Severe Cyclonic Storm
28.10.19/1730	18.8/64.0	160-170 gusting to 190	Extremely Severe Cyclonic Storm
29.10.19/0530	19.2/62.9	150-160 gusting to 180	Very Severe Cyclonic Storm
29.10.19/1730	19.4/61.9	140-150 gusting to 165	Very Severe Cyclonic Storm
30.10.19/0530	19.6/60.8	130-140 gusting to 155	Very Severe Cyclonic Storm

Warnings:

(i) Heavy rainfall warning:

Light to moderate rainfall at most places with heavy to very heavy falls at isolated places is very likely over coastal districts of Karnataka, Goa & south Konkan and isolated heavy rainfall over north Konkan during next 24 hours.

(ii) Wind warning

- Gale wind, speed reaching 70-80 kmph gusting to 90 kmph is prevailing around the system centre over Eastcentral Arabian Sea. It is very likely to increase gradually becoming 90-100 kmph gusting

Contact: Cyclone Warning Division, Office of the Director General of Meteorology,
India Meteorological Department, Ministry of Earth Sciences.

Phone: (91) 11-24652484, FAX: (91) 11-24643128, 24623220, E-mail: cwdhq2008@gmail.com, Website: rsmcnewdelhi.imd.gov.in

Spatial rainfall distribution: Isolated: <25%, A few: 26-50%, Many: 51-75%, Most: 76-100%

Rainfall amount (mm): Heavy rain: 64.5 – 115.5, Very heavy rain: 115.6 – 204.4, Extremely heavy rain: 204.5 or more.

to 110 kmph by 25th evening and 170-180 kmph gusting to 200 kmph by 27th morning over eastcentral & adjoining westcentral Arabian Sea around the system centre.

- Squally wind speed reaching 55-65 kmph gusting to 75 kmph is likely to prevail along & off Ratnagiri, Sindhudurg, Raigad districts of Maharashtra & Goa and 40 to 50 kmph gusting to 60 kmph, is likely to prevail along & off remaining coastal districts of Maharashtra, north Karnataka coast and northeast Arabian Sea off Gujarat coast during next 24 hours.

(iii) Sea condition

- The sea condition is very likely to be high to very high over eastcentral Arabian Sea around the system centre during next 24 hours and phenomenal thereafter. It is very likely to become phenomenal around the system centre over westcentral Arabian Sea from 28th to 31st October.
- It will be very rough to high along & off Maharashtra, Goa coasts and rough to very rough along & off north Karnataka coast during next 24 hours. It is also very likely to be rough to very rough over northeast Arabian Sea off south Gujarat coast during next 24 hours.

(iv) Damage Expected (over Ratnagiri, Sindhudurg, Raigad districts of Maharashtra & Goa):

- Minor damage to loose / unsecured structures.
- Some breaches in Kutcha road due to flooding.
- Minor damage to Banana trees and near coastal agriculture due to salt spray. Damage to ripe paddy crops.
- Minor damage to Kutcha embankments

(v) Fishermen Warning

- The fishermen are advised not to venture into along & off Maharashtra– Goa – Karnataka coasts and northeast Arabian Sea & adjoining south Gujarat coast during next 24 hours.
- The fishermen are also advised not to venture into eastcentral Arabian Sea till 28th and into west central Arabian Sea from 28th to 31st October 2019.

The system is under continuous surveillance and concerned state governments are being informed regularly.

Kindly visit www.imd.gov.in, www.rsmcnewdelhi.imd.gov.in and www.mausam.imd.gov.in for updates on the system.

Contact: Cyclone Warning Division, Office of the Director General of Meteorology,
India Meteorological Department, Ministry of Earth Sciences.

Phone: (91) 11-24652484, FAX: (91) 11-24643128, 24623220, E-mail: cwdhq2008@gmail.com, Website: rsmcnewdelhi.imd.gov.in

Spatial rainfall distribution: Isolated: <25%, A few: 26-50%, Many: 51-75%, Most: 76-100%

Rainfall amount (mm): Heavy rain: 64.5 – 115.5, Very heavy rain: 115.6 – 204.4, Extremely heavy rain: 204.5 or more.

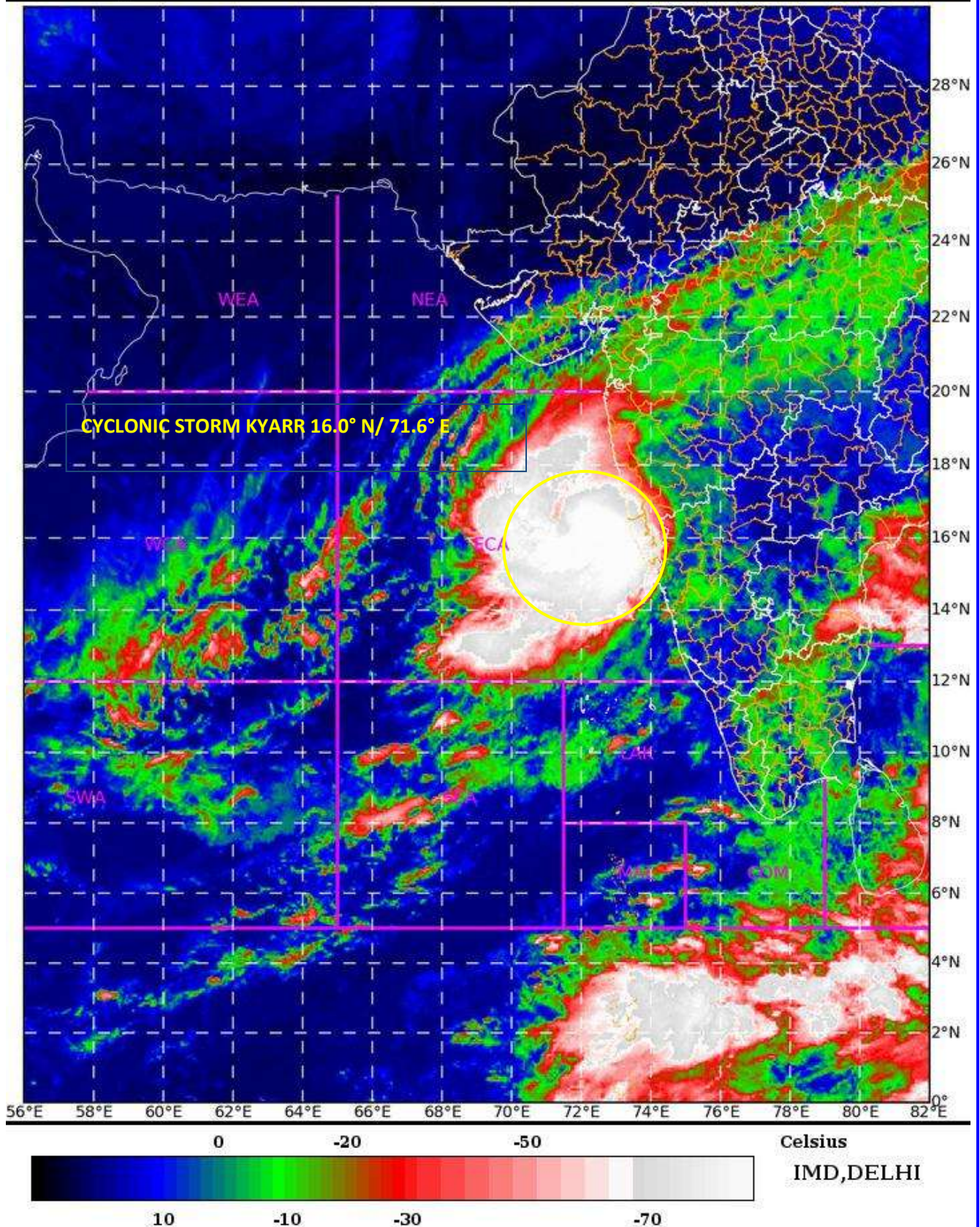
SAT : INSAT-3D IMG

25-10-2019/(0400 to 0427) GMT

IMG_TIR1_TEMP 10.8 um

25-10-2019/(0930 to 0957) IST

ARABIAN SEA

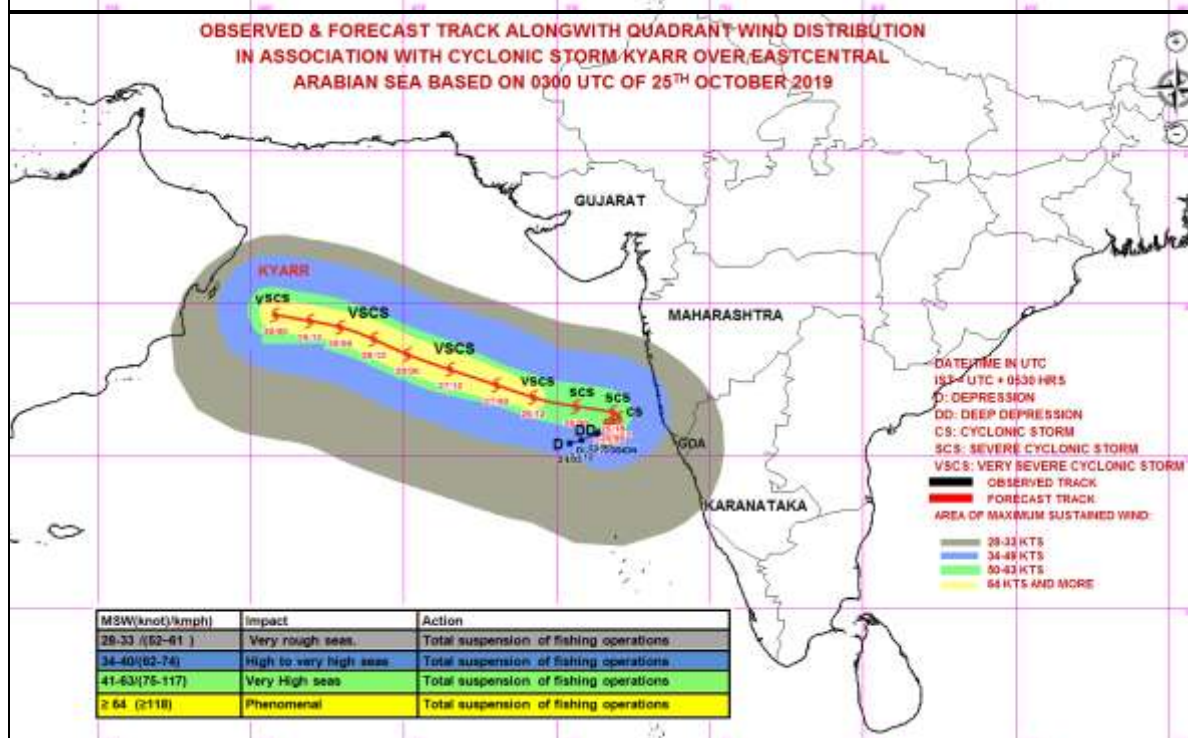
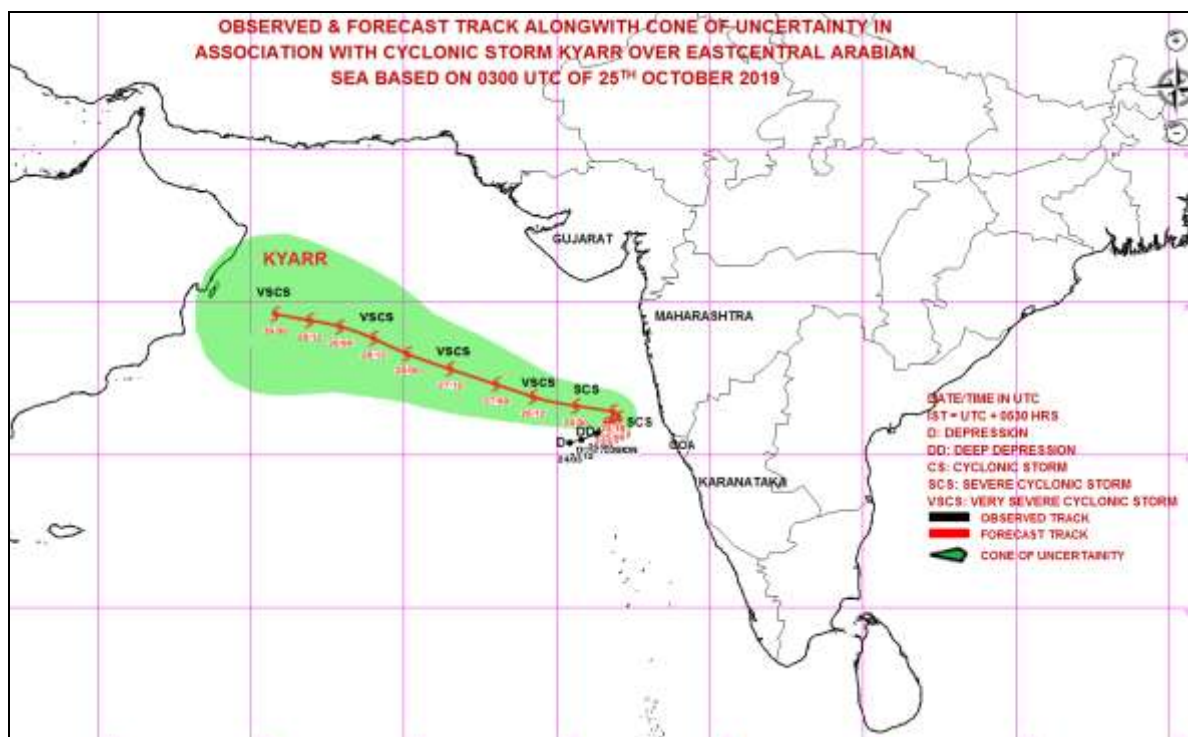


Contact: Cyclone Warning Division, Office of the Director General of Meteorology,
India Meteorological Department, Ministry of Earth Sciences.

Phone: (91) 11-24652484, FAX: (91) 11-24643128, 24623220, E-mail: cwdhq2008@gmail.com, Website: rsmcnewdelhi.imd.gov.in

Spatial rainfall distribution: Isolated: <25%, A few: 26-50%, Many: 51-75%, Most: 76-100%

Rainfall amount (mm): Heavy rain: 64.5 – 115.5, Very heavy rain: 115.6 – 204.4, Extremely heavy rain: 204.5 or more.



Contact: Cyclone Warning Division, Office of the Director General of Meteorology,
 India Meteorological Department, Ministry of Earth Sciences.

Phone: (91) 11-24652484, FAX: (91) 11-24643128, 24623220, E-mail: cwdhq2008@gmail.com, Website: rsmcnewdelhi.imd.gov.in

Spatial rainfall distribution: Isolated: <25%, A few: 26-50%, Many: 51-75%, Most: 76-100%

Rainfall amount (mm): Heavy rain: 64.5 – 115.5, Very heavy rain: 115.6 – 204.4, Extremely heavy rain: 204.5 or more.