



Government of India  
Ministry of Earth Sciences  
Earth System Science Organisation



Earth System Science Organisation  
India Meteorological Department

## PRESS RELEASE-3

Time of issue: 1200 hours IST

Dated: 26-10-2019

### Sub: Cyclonic Storm 'Kyarr' intensified into Very Severe Cyclonic Storm over eastcentral Arabian Sea

Yesterday's cyclonic storm "KYARR" (pronounced as KYARR) over eastcentral Arabian Sea moved north-northeastwards and intensified into a severe cyclonic storm in the same evening (1730 hrs IST of 25<sup>th</sup> October). Thereafter, it recurved west-northwestwards and intensified into a very severe cyclonic storm in the early morning (0530 hours IST) and lay centered at 0830 hrs IST of 26<sup>th</sup> October, 2019 near latitude 16.6°N and longitude 70.5°E over eastcentral Arabian Sea, about 300 km west-southwest of Ratnagiri (Maharashtra), 370 km south-southwest of Mumbai (Maharashtra) and 1740 km east-southeast of Salalah (Oman).

It is very likely to move west-northwestwards towards Oman coast during next 5 days. It is very likely to intensify further into an extremely severe cyclonic storm during next 24 hours.

Forecast track and intensity are given in the following table:

Date/Time(IST)	Position (Lat. °N/ long. °E)	Maximum sustained surface wind speed (Kmph)	Category of cyclonic disturbance
26.10.19/0830	16.6/70.5	125-135 gusting to 150	Very Severe Cyclonic Storm
26.10.19/1130	16.7/69.9	135-145 gusting to 160	Very Severe Cyclonic Storm
26.10.19/1730	16.9/69.3	155-165 gusting to 180	Very Severe Cyclonic Storm
26.10.19/2330	17.1/68.6	170-180 gusting to 200	Extremely Severe Cyclonic Storm
27.10.19/0530	17.3/68.0	170-180 gusting to 200	Extremely Severe Cyclonic Storm
27.10.19/1730	17.7/66.7	170-180 gusting to 200	Extremely Severe Cyclonic Storm
28.10.19/0530	18.2/65.4	155-165 gusting to 180	Very Severe Cyclonic Storm
28.10.19/1730	18.6/64.3	145-155 gusting to 170	Very Severe Cyclonic Storm
29.10.19/0530	19.0/63.3	135-145 gusting to 160	Very Severe Cyclonic Storm
29.10.19/1730	19.4/62.3	125-135 gusting to 150	Very Severe Cyclonic Storm
30.10.19/0530	19.6/61.4	120-130 gusting to 145	Very Severe Cyclonic Storm
30.10.19/1730	19.5/60.7	110-120 gusting to 135	Severe Cyclonic Storm
31.10.19/0530	19.3/60.0	100-110 gusting to 125	Severe Cyclonic Storm

### Warnings:

#### (i) Heavy rainfall warning:

Light to moderate rainfall at many places with heavy falls at isolated places very likely over Ratnagiri, Sindhudurg Districts of Maharashtra, Goa and Uttar Kannada & Uduppi districts of Karnataka during next 12 hours. Light to moderate rainfall at a few places likely over south Gujarat during next 24 hours.

#### (ii) Wind warning

- Gale wind speed reaching 125-135 kmph gusting to 150 kmph is prevailing around the system centre over eastcentral Arabian Sea and very likely to increase gradually becoming 170-180

Contact: Cyclone Warning Division, Office of the Director General of Meteorology,  
India Meteorological Department, Ministry of Earth Sciences.

Phone: (91) 11-24652484, FAX: (91) 11-24643128, 24623220, E-mail: [cwdhq2008@gmail.com](mailto:cwdhq2008@gmail.com), Website: [rsmcnewdelhi.imd.gov.in](http://rsmcnewdelhi.imd.gov.in)

Spatial rainfall distribution: Isolated: <25%, A few: 26-50%, Many: 51-75%, Most: 76-100%

Rainfall amount (mm): Heavy rain: 64.5 – 115.5, Very heavy rain: 115.6 – 204.4, Extremely heavy rain: 204.5 or more.

kmph gusting to 200 kmph from 27<sup>th</sup> early morning onwards over eastcentral & adjoining westcentral Arabian Sea around the system centre.

- Squally wind speed reaching 40-50 kmph gusting to 60 kmph likely along & off Maharashtra & Goa and Karnataka coast during next 12 hours and along & off south Gujarat coast during next 24 hours.

**(iii) Sea condition**

- Sea condition will be phenomenal over eastcentral Arabian Sea around the system centre till 28<sup>th</sup> October and improve gradually thereafter becoming High to very high during 29<sup>th</sup> – 30<sup>th</sup> October. It is very likely to become phenomenal around the system centre over westcentral Arabian Sea from 28<sup>th</sup> to 30<sup>th</sup> October evening and will become High to very High during the subsequent 48 hours.
- It will be rough to very rough along & off Maharashtra & Goa and Karnataka coasts during next 12 hours. It is also very likely to be rough to very rough over northeast Arabian Sea off south Gujarat coast during next 24 hours.

**(iv) Fishermen Warning**

- The fishermen are advised not to venture into the Sea along & off Maharashtra– Goa – Karnataka coasts and northeast Arabian Sea & adjoining south Gujarat coast during next 24 hours.
- The fishermen are also advised not to venture into eastcentral Arabian Sea till 29<sup>th</sup> and into west central Arabian Sea from 28<sup>th</sup> to 31<sup>st</sup> October 2019.

The system is under continuous surveillance and concerned state governments are being informed regularly.

Kindly visit [www.imd.gov.in](http://www.imd.gov.in), [www.rsmcnewdelhi.imd.gov.in](http://www.rsmcnewdelhi.imd.gov.in) and [www.mausam.imd.gov.in](http://www.mausam.imd.gov.in) for updates on the system.

---

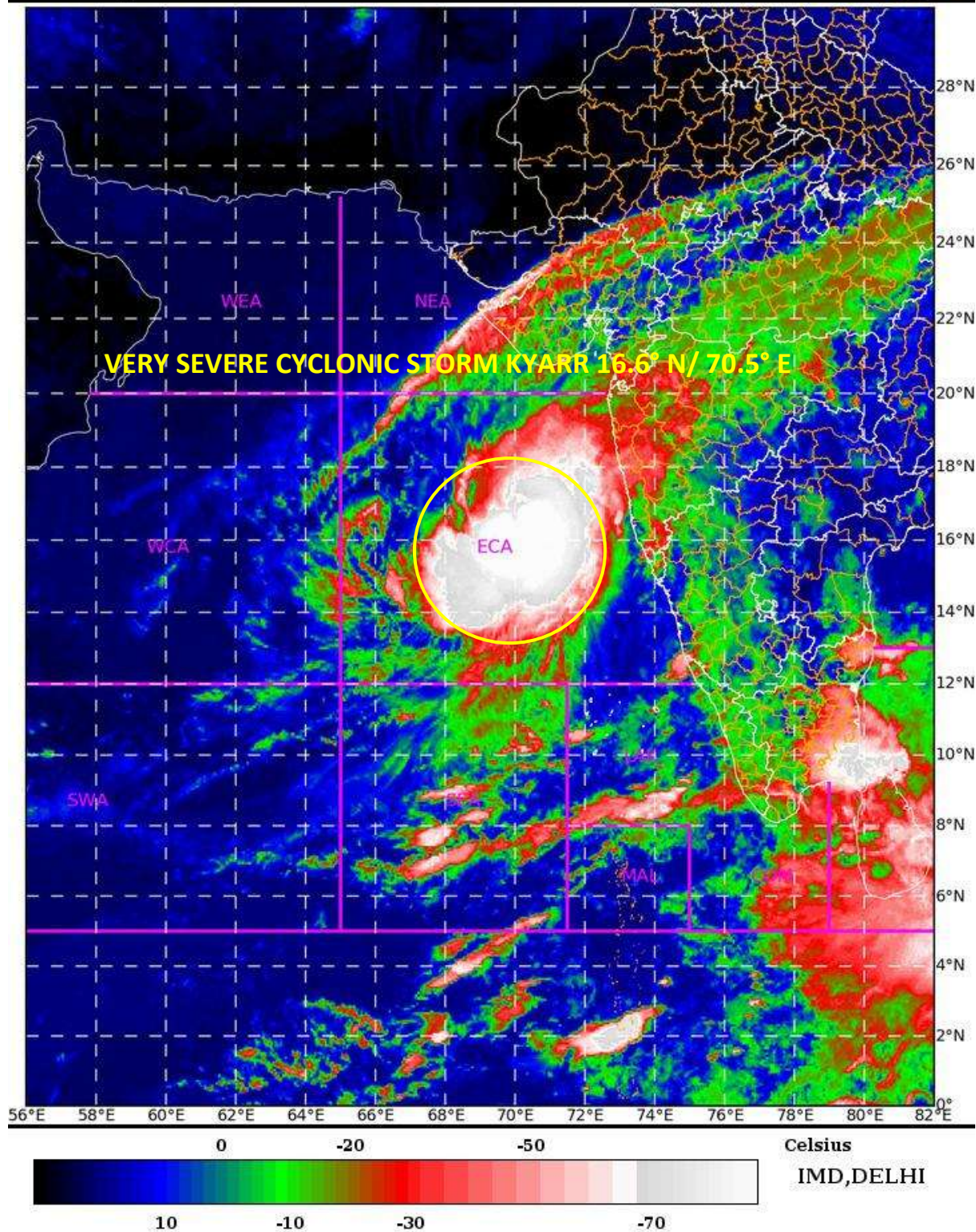
Contact: Cyclone Warning Division, Office of the Director General of Meteorology,  
India Meteorological Department, Ministry of Earth Sciences.

Phone: (91) 11-24652484, FAX: (91) 11-24643128, 24623220, E-mail: [cwdhq2008@gmail.com](mailto:cwdhq2008@gmail.com), Website: [rsmcnewdelhi.imd.gov.in](http://rsmcnewdelhi.imd.gov.in)

Spatial rainfall distribution: Isolated: <25%, A few: 26-50%, Many: 51-75%, Most: 76-100%

Rainfall amount (mm): Heavy rain: 64.5 – 115.5, Very heavy rain: 115.6 – 204.4, Extremely heavy rain: 204.5 or more.

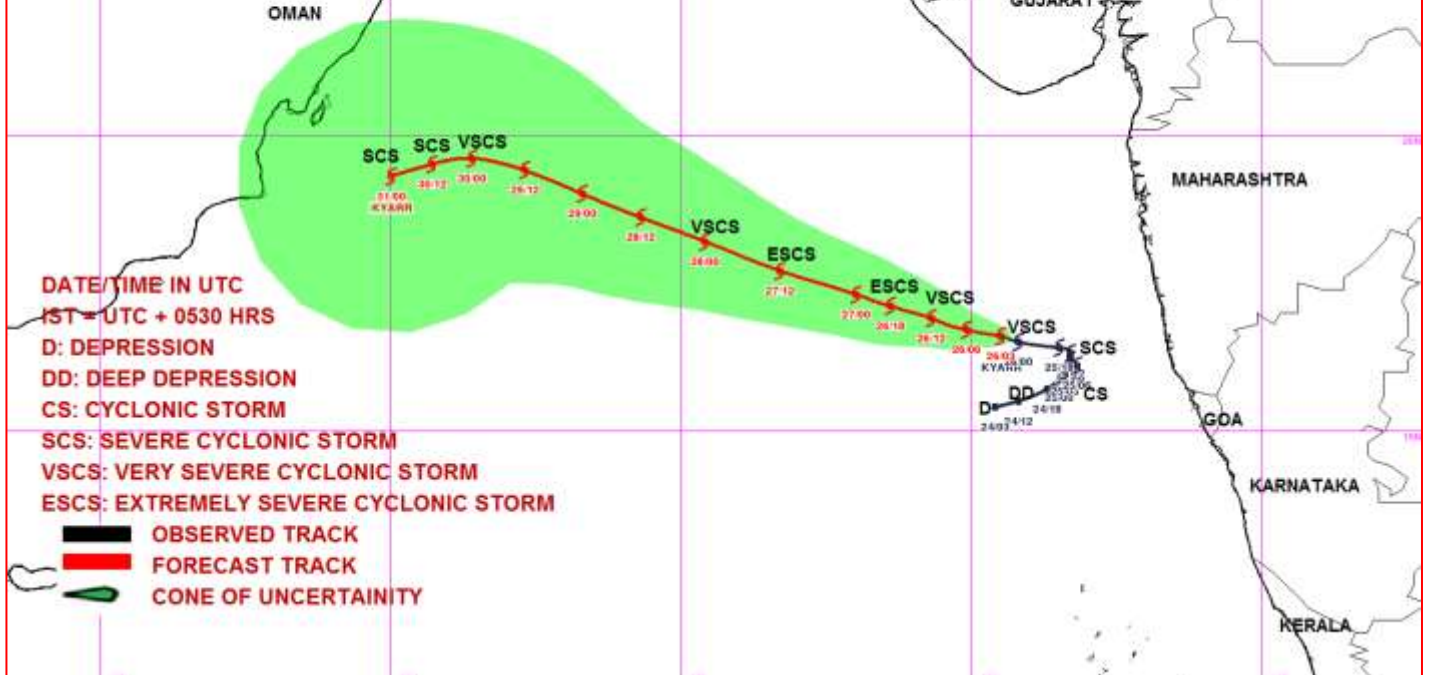
SAT : INSAT-3D IMG      26-10-2019/(0500 to 0527) GMT  
IMG\_TIR1\_TEMP 10.8 um    26-10-2019/(1030 to 1057) IST  
ARABIAN\_SEA



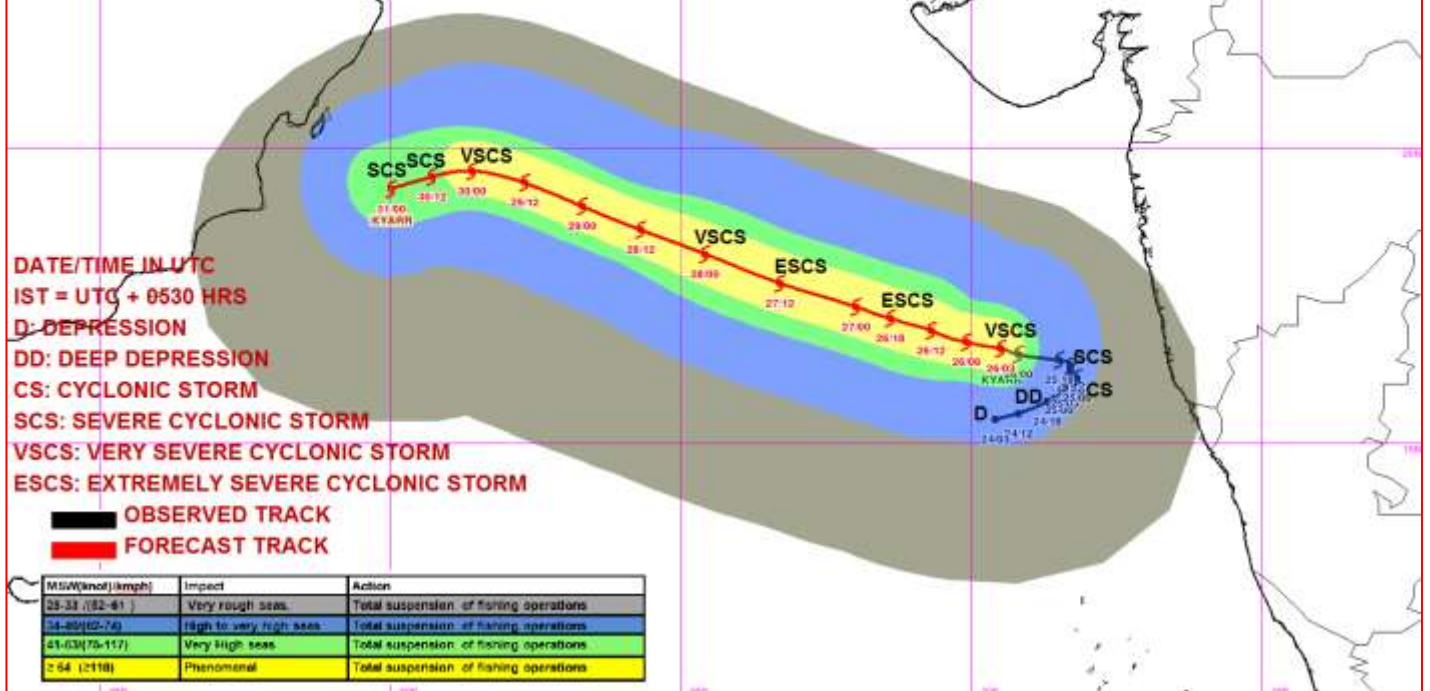
ECA= East Central Arabian Sea

Contact: Cyclone Warning Division, Office of the Director General of Meteorology,  
India Meteorological Department, Ministry of Earth Sciences.  
Phone: (91) 11-24652484, FAX: (91) 11-24643128, 24623220, E-mail: [cwdhq2008@gmail.com](mailto:cwdhq2008@gmail.com), Website: [rsmcnewdelhi.imd.gov.in](http://rsmcnewdelhi.imd.gov.in)  
Spatial rainfall distribution: Isolated: <25%, A few: 26-50%, Many: 51-75%, Most: 76-100%  
Rainfall amount (mm): Heavy rain: 64.5 – 115.5, Very heavy rain: 115.6 – 204.4, Extremely heavy rain: 204.5 or more.

**OBSERVED & FORECAST TRACK ALONGWITH CONE OF UNCERTAINTY IN ASSOCIATION WITH VERY SEVERE CYCLONIC STORM KYARR OVER EASTCENTRAL ARABIAN SEA BASED ON 0300 UTC OF 26<sup>TH</sup> OCTOBER 2019**



**OBSERVED & FORECAST TRACK ALONGWITH QUADRANT WIND DISTRIBUTION IN ASSOCIATION WITH VERY SEVERE CYCLONIC STORM KYARR OVER EASTCENTRAL ARABIAN SEA BASED ON 0300 UTC OF 26<sup>TH</sup> OCTOBER 2019**



Contact: Cyclone Warning Division, Office of the Director General of Meteorology, India Meteorological Department, Ministry of Earth Sciences.

Phone: (91) 11-24652484, FAX: (91) 11-24643128, 24623220, E-mail: cwdhq2008@gmail.com, Website: [rsmcnewdelhi.imd.gov.in](http://rsmcnewdelhi.imd.gov.in)

Spatial rainfall distribution: Isolated: <25%, A few: 26-50%, Many: 51-75%, Most: 76-100%

Rainfall amount (mm): Heavy rain: 64.5 – 115.5, Very heavy rain: 115.6 – 204.4, Extremely heavy rain: 204.5 or more.