



Government of India  
Ministry of Earth Sciences  
Earth System Science Organisation



Earth System Science Organisation  
India Meteorological Department

## PRESS RELEASE-4

Time of issue: 1520 hours IST

Dated: 27-10-2019

**Sub: Very Cyclonic Storm 'Kyarr' intensified into Super Cyclonic Storm over eastcentral Arabian Sea**

Yesterday's **very severe cyclonic storm** "KYARR" (pronounced as KYARR) over eastcentral Arabian Sea intensified into an **extremely severe cyclonic storm** in the same night (2030 hours IST of 26<sup>th</sup> October). Moving west-northwestwards, it very rapidly intensified into a **Super Cyclonic Storm (SuCS)** in the morning (0830 hrs IST) of today, the 27<sup>th</sup> October, 2019, with maximum sustained wind speed of 230-240 kmph gusting to 265 kmph. It registered an increase in wind speed by about 100 kmph during past 24 hours ending at 0830 hours IST of today, the 27<sup>th</sup> October, 2019.

At 1130 hours IST of today, the 27<sup>th</sup> October 2019, it lay centered near latitude 17.2°N and longitude 67.3°E over eastcentral Arabian Sea, about 620 km west-southwest of Mumbai (Maharashtra), 1400 km east of Salalah (Oman) and 960 km east-southeast of Masirah (Oman).

**It is very likely to move west-northwestwards towards Oman coast during next 5 days. It is very likely to maintain the intensity of a Super Cyclonic Storm till 28<sup>th</sup> October morning and weaken gradually thereafter.**

Forecast track and intensity are given in the following table:

Date/Time(IST)	Position (Lat. °N/ long. °E)	Maximum sustained surface wind speed (Kmph)	Category of cyclonic disturbance
27.10.19/1130	17.2/67.3	230-240 gusting to 265	Super Cyclonic Storm
27.10.19/1730	17.4/66.7	240-250 gusting to 275	Super Cyclonic Storm
27.10.19/2330	17.6/66.1	240-250 gusting to 275	Super Cyclonic Storm
28.10.19/0530	17.9/65.6	230-240 gusting to 265	Super Cyclonic Storm
28.10.19/1130	18.1/65.1	220-230 gusting to 255	Super Cyclonic Storm
28.10.19/2330	18.6/64.2	210-220 gusting to 245	Extremely Severe Cyclonic Storm
29.10.19/1130	19.1/63.4	200-210 gusting to 230	Extremely Severe Cyclonic Storm
29.10.19/2330	19.3/62.7	180-190 gusting to 210	Extremely Severe Cyclonic Storm
30.10.19/1130	19.4/62.2	160-170 gusting to 190	Extremely Severe Cyclonic Storm
30.10.19/2330	19.4/61.8	140-150 gusting to 165	Very Severe Cyclonic Storm
31.10.19/1130	19.3/61.4	125-135 gusting to 145	Very Severe Cyclonic Storm
31.10.19/2330	19.1/61.0	110-120 gusting to 130	Severe Cyclonic Storm
01.11.19/1130	18.7/60.7	95-105 gusting to 115	Severe Cyclonic Storm

**Kyarr is the first super cyclone after cyclone Gonu in June 2007 over Arabian Sea. However, SuCS Gonu weakened over sea and crossed Oman coast as a very severe cyclonic storm.**

Contact: Cyclone Warning Division, Office of the Director General of Meteorology, India Meteorological Department, Ministry of Earth Sciences.

Phone: (91) 11-24652484, FAX: (91) 11-24643128, 24623220, E-mail: cwdhq2008@gmail.com, Website: [rsmcnewdelhi.imd.gov.in](http://rsmcnewdelhi.imd.gov.in)

Spatial rainfall distribution: Isolated: <25%, A few: 26-50%, Many: 51-75%, Most: 76-100%

Rainfall amount (mm): Heavy rain: 64.5 – 115.5, Very heavy rain: 115.6 – 204.4, Extremely heavy rain: 204.5 or more.

## Warnings:

### (i) Heavy rainfall warning:

No warning

### (ii) Wind warning

- Gale wind, speed reaching 230-240 kmph gusting to 265 kmph, is prevailing around the system centre over Eastcentral Arabian Sea and very likely to increase gradually becoming 240-250 kmph gusting to 275 kmph by evening of 27<sup>th</sup> October over eastcentral & adjoining westcentral Arabian Sea around the system centre.
- Gale wind, speed reaching 210-220 kmph gusting to 240 kmph, likely to prevail over west-central Arabian Sea from 28<sup>th</sup> October and decrease gradually becoming 95 – 105 gusting to 115 kmph by 1<sup>st</sup> November morning.

### (iii) Sea condition

- Sea condition will be phenomenal over eastcentral Arabian Sea around the system centre till 30<sup>th</sup> October and improve gradually thereafter becoming very rough to high from the evening of 31<sup>st</sup> October.
- It is very likely to become phenomenal around the system centre over westcentral Arabian Sea from 28<sup>th</sup> to 30<sup>th</sup> October evening and will become High to very High during the subsequent 48 hours.

### (iv) Fishermen Warning

- The fishermen are advised not to venture into eastcentral Arabian Sea till 29<sup>th</sup> and into west central Arabian Sea from 28<sup>th</sup> October to 01<sup>st</sup> November 2019.

The system is under continuous surveillance and concerned state governments are being informed regularly.

Kindly visit [www.imd.gov.in](http://www.imd.gov.in), [www.rsmcnewdelhi.imd.gov.in](http://www.rsmcnewdelhi.imd.gov.in) and [www.mausam.imd.gov.in](http://www.mausam.imd.gov.in) for updates on the system.

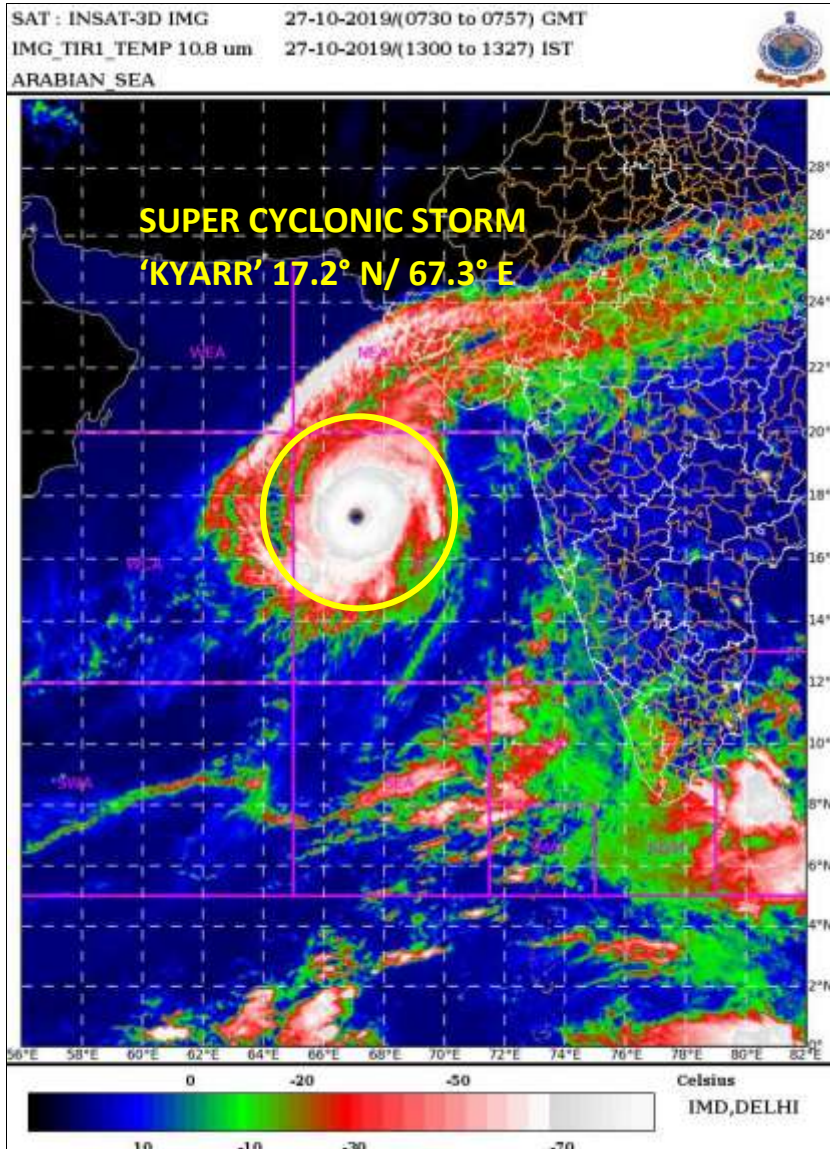
---

Contact: Cyclone Warning Division, Office of the Director General of Meteorology,  
India Meteorological Department, Ministry of Earth Sciences.

Phone: (91) 11-24652484, FAX: (91) 11-24643128, 24623220, E-mail: [cwdhq2008@gmail.com](mailto:cwdhq2008@gmail.com), Website: [rsmcnewdelhi.imd.gov.in](http://rsmcnewdelhi.imd.gov.in)

Spatial rainfall distribution: Isolated: <25%, A few: 26-50%, Many: 51-75%, Most: 76-100%

Rainfall amount (mm): Heavy rain: 64.5 – 115.5, Very heavy rain: 115.6 – 204.4, Extremely heavy rain: 204.5 or more.

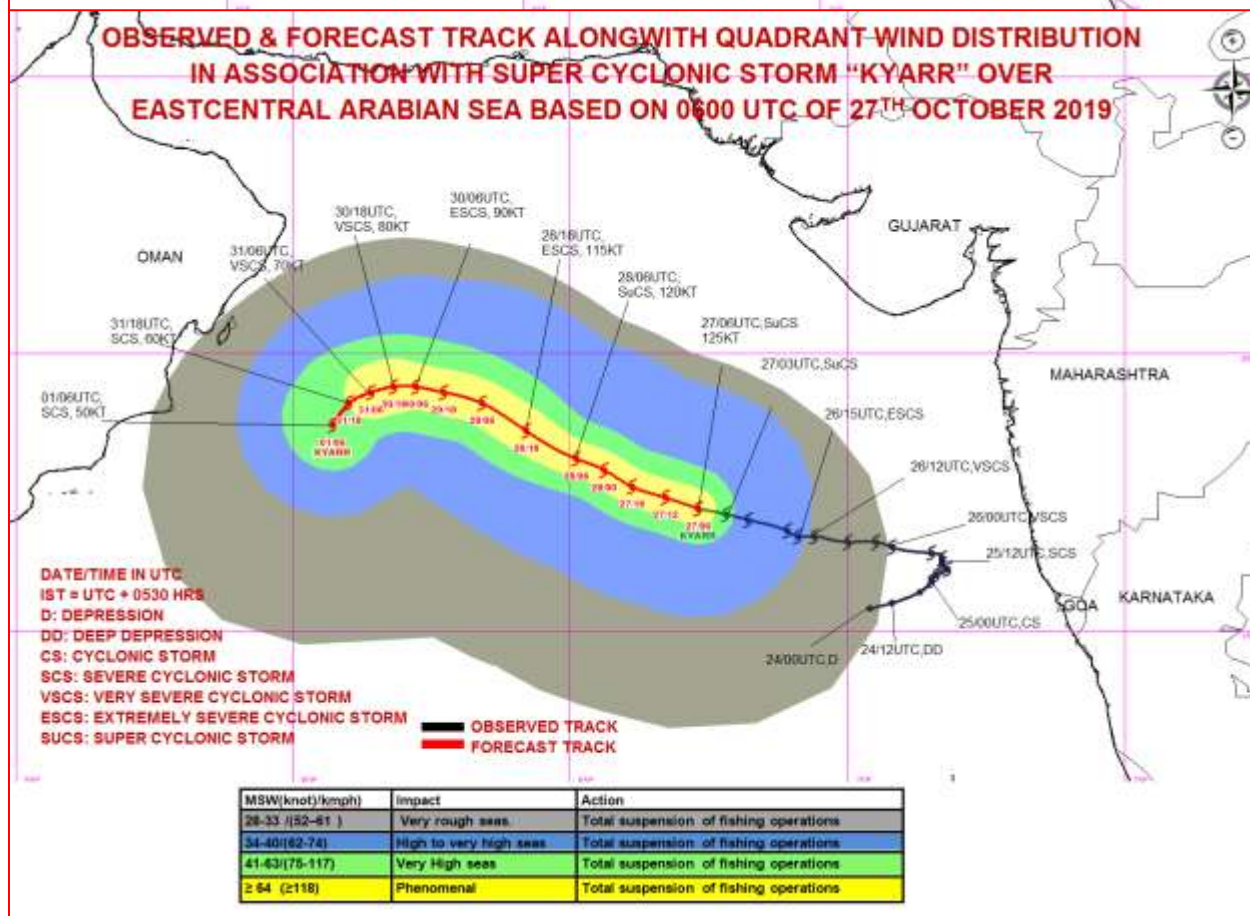
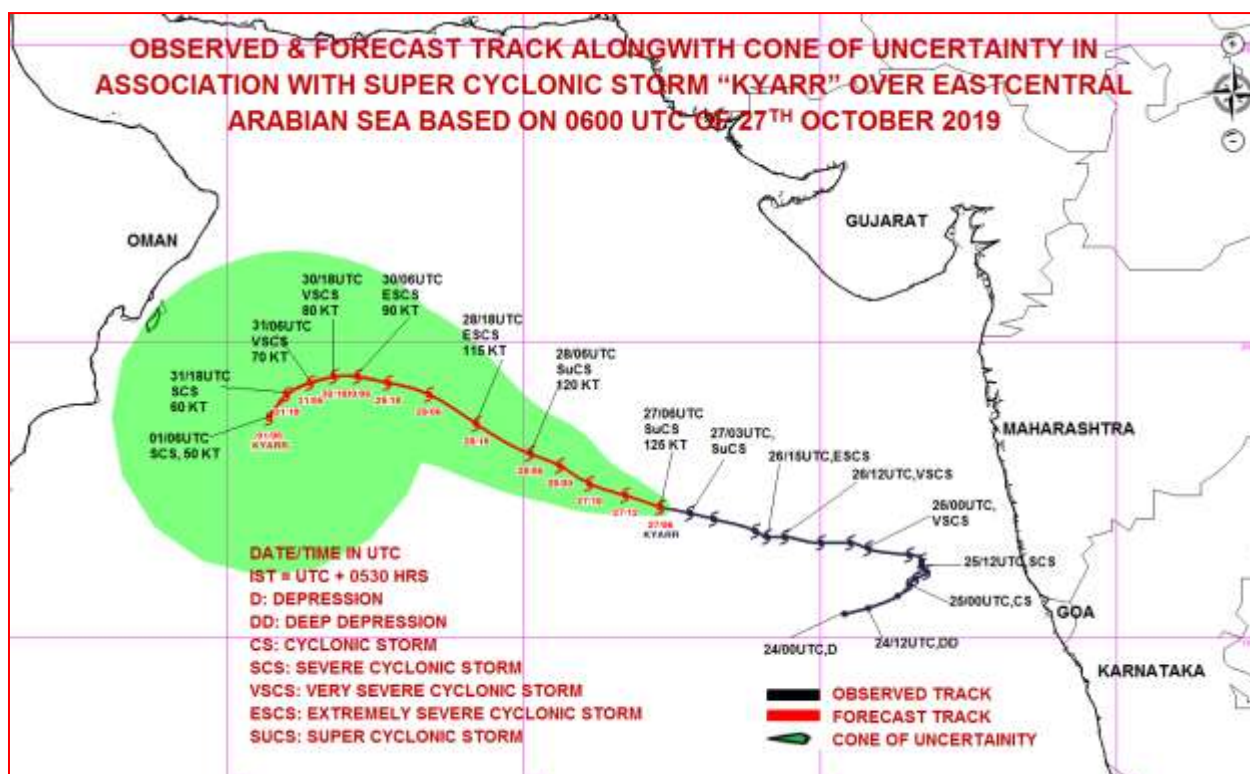


Contact: Cyclone Warning Division, Office of the Director General of Meteorology,  
India Meteorological Department, Ministry of Earth Sciences.

Phone: (91) 11-24652484, FAX: (91) 11-24643128, 24623220, E-mail: [cwdhq2008@gmail.com](mailto:cwdhq2008@gmail.com), Website: [rsmcnewdelhi.imd.gov.in](http://rsmcnewdelhi.imd.gov.in)

Spatial rainfall distribution: Isolated: <25%, A few: 26-50%, Many: 51-75%, Most: 76-100%

Rainfall amount (mm): Heavy rain: 64.5 – 115.5, Very heavy rain: 115.6 – 204.4, Extremely heavy rain: 204.5 or more.



Contact: Cyclone Warning Division, Office of the Director General of Meteorology, India Meteorological Department, Ministry of Earth Sciences.

Phone: (91) 11-24652484, FAX: (91) 11-24643128, 24623220, E-mail: [cwdhq2008@gmail.com](mailto:cwdhq2008@gmail.com), Website: [rsmcnewdelhi.imd.gov.in](http://rsmcnewdelhi.imd.gov.in)

Spatial rainfall distribution: Isolated: <25%, A few: 26-50%, Many: 51-75%, Most: 76-100%

Rainfall amount (mm): Heavy rain: 64.5 – 115.5, Very heavy rain: 115.6 – 204.4, Extremely heavy rain: 204.5 or more.