



Government of India
Ministry of Earth Sciences
Earth System Science Organisation



Earth System Science Organisation
India Meteorological Department

PRESS RELEASE- 10

Time of issue: 1300 hours IST

Dated: 02-11-2019

Sub: (a) Severe Cyclonic Storm “MAHA” over eastcentral Arabian Sea (b) Depression over westcentral Arabian Sea

(a) Severe Cyclonic Storm “MAHA” over eastcentral Arabian Sea

Yesterday's severe cyclonic storm “MAHA” (Pronounced as M'maha) over eastcentral Arabian Sea moved west-northwestwards in past 24 hrs and lay centered at 0830 hrs IST of today, the 02nd November, 2019 over the same region near latitude 16.4°N and longitude 68.3°E, about 540 km south-southwest of Veraval (Gujarat) and 550 km south-southwest of Diu.

It is very likely to move west-northwestwards till 04th November and recurve east-northeastwards towards south Gujarat and adjoining north Maharashtra coasts, thereafter. It is very likely to intensify into a Very Severe Cyclonic Storm over eastcentral Arabian Sea during next 48 hours. However, after the re-curvature, it is very likely to weaken gradually while moving east-northeastwards.

Forecast track and intensity are given in the following table:

Date/Time(IST)	Position (Lat. °N/ Long. °E)	Maximum sustained surface wind speed (Kmph)	Category of cyclonic disturbance
02.11.19/0830	16.4/68.3	90-100 gusting to 110	Severe Cyclonic Storm
02.11.19/1130	16.6/68.0	90-100 gusting to 110	Severe Cyclonic Storm
02.11.19/1730	16.9/67.7	100-110 gusting to 120	Severe Cyclonic Storm
02.11.19/2330	17.1/67.4	100-110 gusting to 120	Severe Cyclonic Storm
03.11.19/0530	17.5/66.6	110-120 gusting to 135	Severe Cyclonic Storm
03.11.19/1730	17.8/65.5	110-120 gusting to 135	Severe Cyclonic Storm
04.11.19/0530	18.0/64.2	125-135 gusting to 150	Very Severe Cyclonic Storm
04.11.19/1730	18.2/63.1	135-145 gusting to 160	Very Severe Cyclonic Storm
05.11.19/0530	18.7/62.9	155-165 gusting to 180	Very Severe Cyclonic Storm
05.11.19/1730	19.2/63.1	155-165 gusting to 180	Very Severe Cyclonic Storm
06.11.19/0530	19.4/64.5	125-135 gusting to 145	Very Severe Cyclonic Storm
06.11.19/1730	19.7/66.5	120-130 gusting to 145	Very Severe Cyclonic Storm
07.11.19/0530	20.0/69.0	110-120 gusting to 135	Severe Cyclonic Storm

Warnings:

(i) Rainfall:

- Light to moderate rainfall at most places with isolated heavy falls over Saurashtra, Gujarat region and north Madhya Maharashtra and north Konkan from 6th November evening to 8th November morning.

(ii) Wind warning

- Gale wind speed reaching 90-100 kmph gusting to 110 kmph is prevailing over eastcentral Arabian Sea around the system centre.
- Gale wind speed is very likely to increase gradually over east-central Arabian Sea becoming 125-135 kmph gusting to 150 kmph by the morning of 4th November and 155-165 kmph gusting to 180

Contact: Cyclone Warning Division, Office of the Director General of Meteorology,
India Meteorological Department, Ministry of Earth Sciences.

Phone: (91) 11-24652484, FAX: (91) 11-24643128, 24623220, E-mail: cwdhq2008@gmail.com, Website: rsmcnewdelhi.imd.gov.in

Spatial rainfall distribution: Isolated: <25%, A few: 26-50%, Many: 51-75%, Most: 76-100%

Rainfall amount (mm): Heavy rain: 64.5 – 115.5, Very heavy rain: 115.6 – 204.4, Extremely heavy rain: 204.5 or more.

kmph over eastcentral & adjoining westcentral and northeast Arabian Sea by 05th November morning.

- Squally wind speed reaching 40-50 kmph gusting to 60 kmph likely along & off Maharashtra coast during next 24 hours.
- Squally wind speed reaching 40-50 kmph gusting to 60 kmph likely to commence over northeast Arabian Sea along & off South Gujarat coast from 6th November morning for subsequent 48 hours.

(iii) Sea condition

- Sea condition will be very high over eastcentral Arabian Sea for the next 24 hours and will become phenomenal from 04th November morning for subsequent 02 days.
- Sea condition will be high to phenomenal over westcentral during 3rd-6th November and over northeast Arabian Sea during 3rd-7th November.

(iv) Fishermen Warning

- The fishermen are advised not to venture into the sea along & off Maharashtra coast during next 24 hours and into eastcentral Arabian Sea till 7th November, over westcentral and northeast Arabian Sea from 03rd to 07th November and along & off Gujarat & adjoining north Maharashtra coasts during 5th-7th November.

(b) Depression over westcentral Arabian Sea

Yesterday's depression over westcentral Arabian Sea moved west-southwestwards during past 24 hours and lay centred at 0830 hrs IST of today, the 02nd November, 2019 over westcentral Arabian Sea near latitude 13.5°N and longitude 55.0°E, about 150 km east-northeast of Socotra Island and 460 km east-northeast of Bereeda (Somalia).

It is very likely to move west-southwestwards towards Somalia coast across Socotra Island during next 12 hours and weaken into a Well Marked Low Pressure Area thereafter.

Forecast track and intensity are given in the following table:

Date/Time(IST)	Position (Lat. °N/ long. °E)	Maximum sustained surface wind speed (Kmph)	Category of cyclonic disturbance
02.11.19/0830	13.5/55.0	40-50 gusting to 60	Depression
02.11.19/1130	13.0/54.2	40-50 gusting to 60	Depression
02.11.19/1730	12.2/53.0	35-45 gusting to 55	Depression
02.11.19/2330	11.4/51.5	35-45 gusting to 55	Depression

Warnings:

(i) Wind warning

- Squally wind speed reaching 40-50 kmph gusting to 60 kmph is very likely to prevail around the system centre over westcentral Arabian Sea, along and off north Somalia coast and adjoining areas of Gulf of Aden and southwest Arabian Sea during next 24 hours.

(ii) Sea condition

- Sea condition is rough to very rough over westcentral Arabian Sea, along and off north Somalia coast and adjoining areas of Gulf of Aden and southwest Arabian Sea during next 24 hours.

(iii) Fishermen Warning

- The fishermen are advised not to venture into westcentral Arabian Sea around system centre, along and off north Somalia coast and adjoining areas of Gulf of Aden and southwest Arabian Sea during next 24 hours.

Both the systems are under continuous surveillance and concerned state governments are being informed regularly.

Kindly visit www.imd.gov.in, www.rsmcnewdelhi.imd.gov.in and www.mausam.imd.gov.in for updates on the system.

Contact: Cyclone Warning Division, Office of the Director General of Meteorology,
India Meteorological Department, Ministry of Earth Sciences.

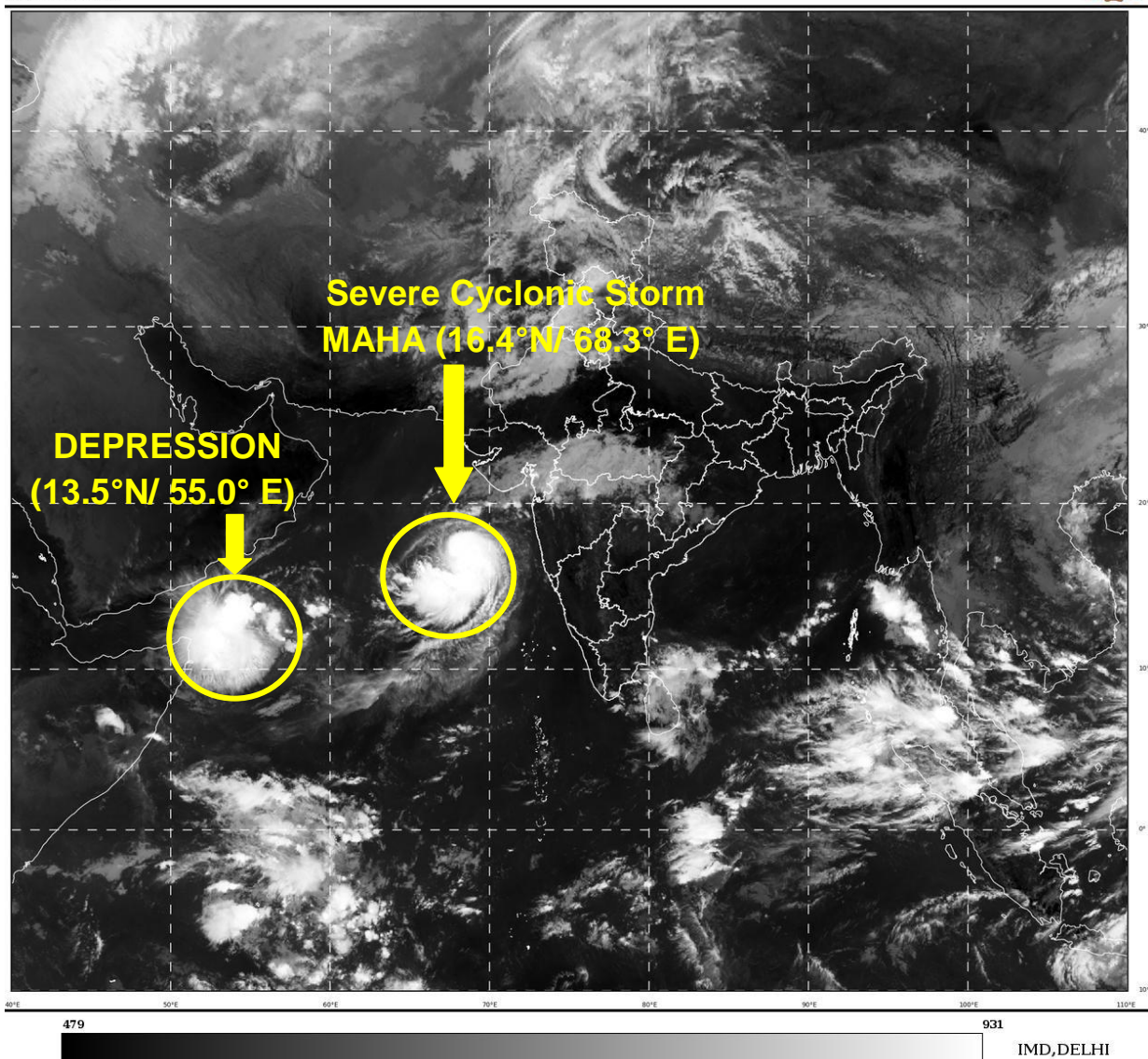
Phone: (91) 11-24652484, FAX: (91) 11-24643128, 24623220, E-mail: cwdhq2008@gmail.com, Website: rsmcnewdelhi.imd.gov.in

Spatial rainfall distribution: Isolated: <25%, A few: 26-50%, Many: 51-75%, Most: 76-100%

Rainfall amount (mm): Heavy rain: 64.5 – 115.5, Very heavy rain: 115.6 – 204.4, Extremely heavy rain: 204.5 or more.

SAT : INSAT-3D IMG
IMG_TIR1 10.8 um
LIC Mercator

02-11-2019/(0430 to 0456) GMT
02-11-2019/(1000 to 1026) IST

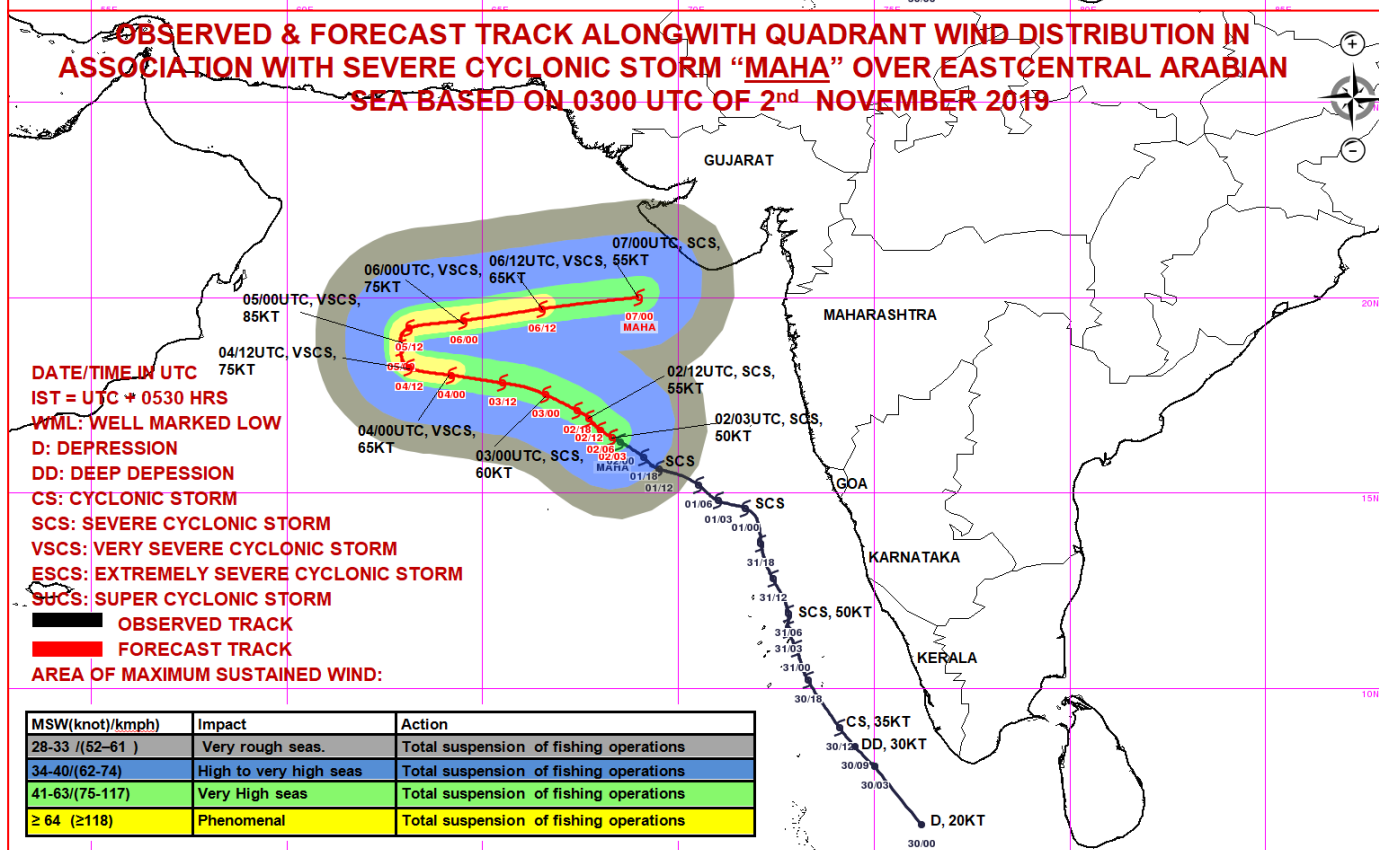
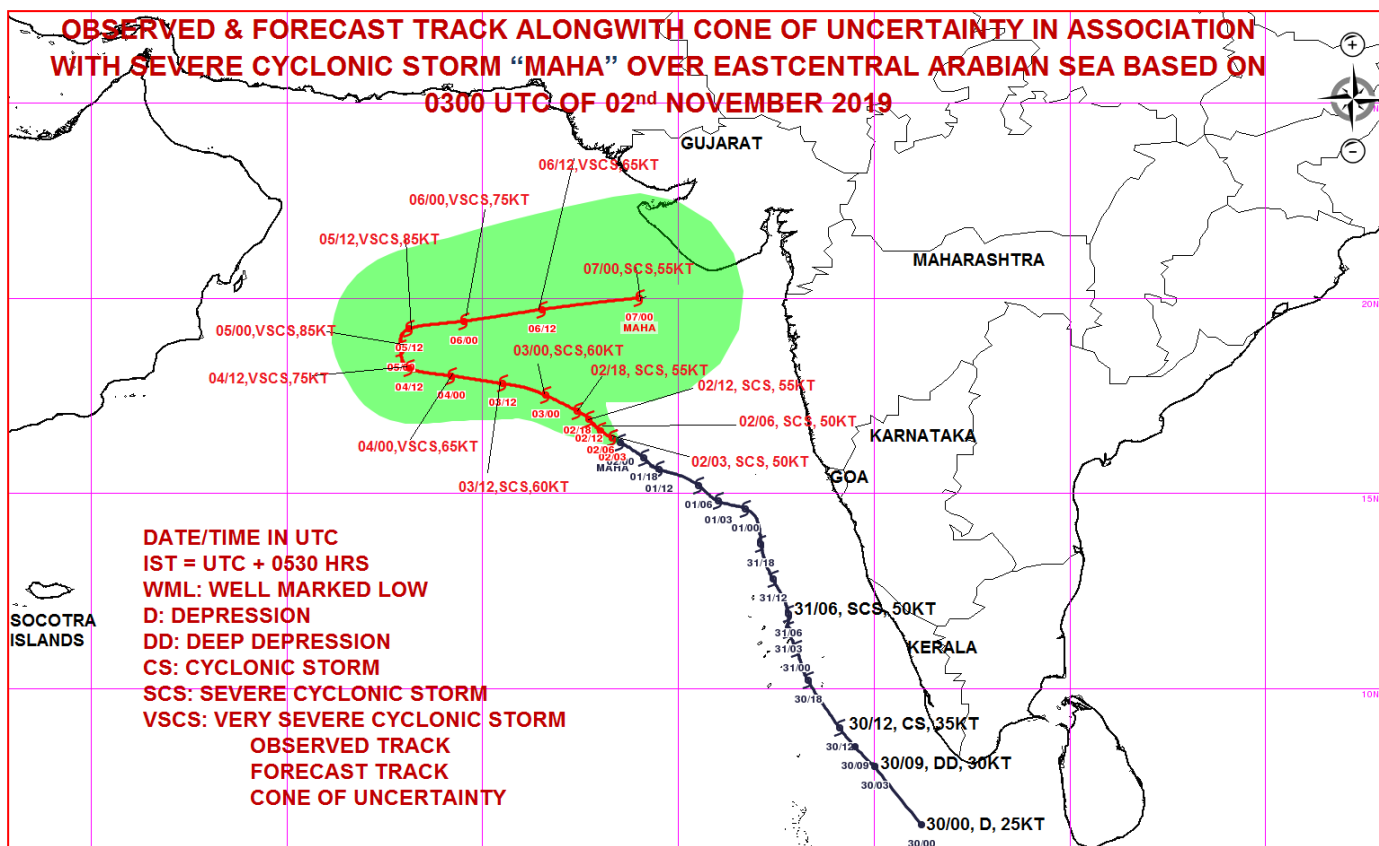


Contact: Cyclone Warning Division, Office of the Director General of Meteorology,
India Meteorological Department, Ministry of Earth Sciences.

Phone: (91) 11-24652484, FAX: (91) 11-24643128, 24623220, E-mail: cwdhq2008@gmail.com, Website: rsmcnewdelhi.imd.gov.in

Spatial rainfall distribution: Isolated: <25%, A few: 26-50%, Many: 51-75%, Most: 76-100%

Rainfall amount (mm): Heavy rain: 64.5 – 115.5, Very heavy rain: 115.6 – 204.4, Extremely heavy rain: 204.5 or more.



Contact: Cyclone Warning Division, Office of the Director General of Meteorology,
 India Meteorological Department, Ministry of Earth Sciences.

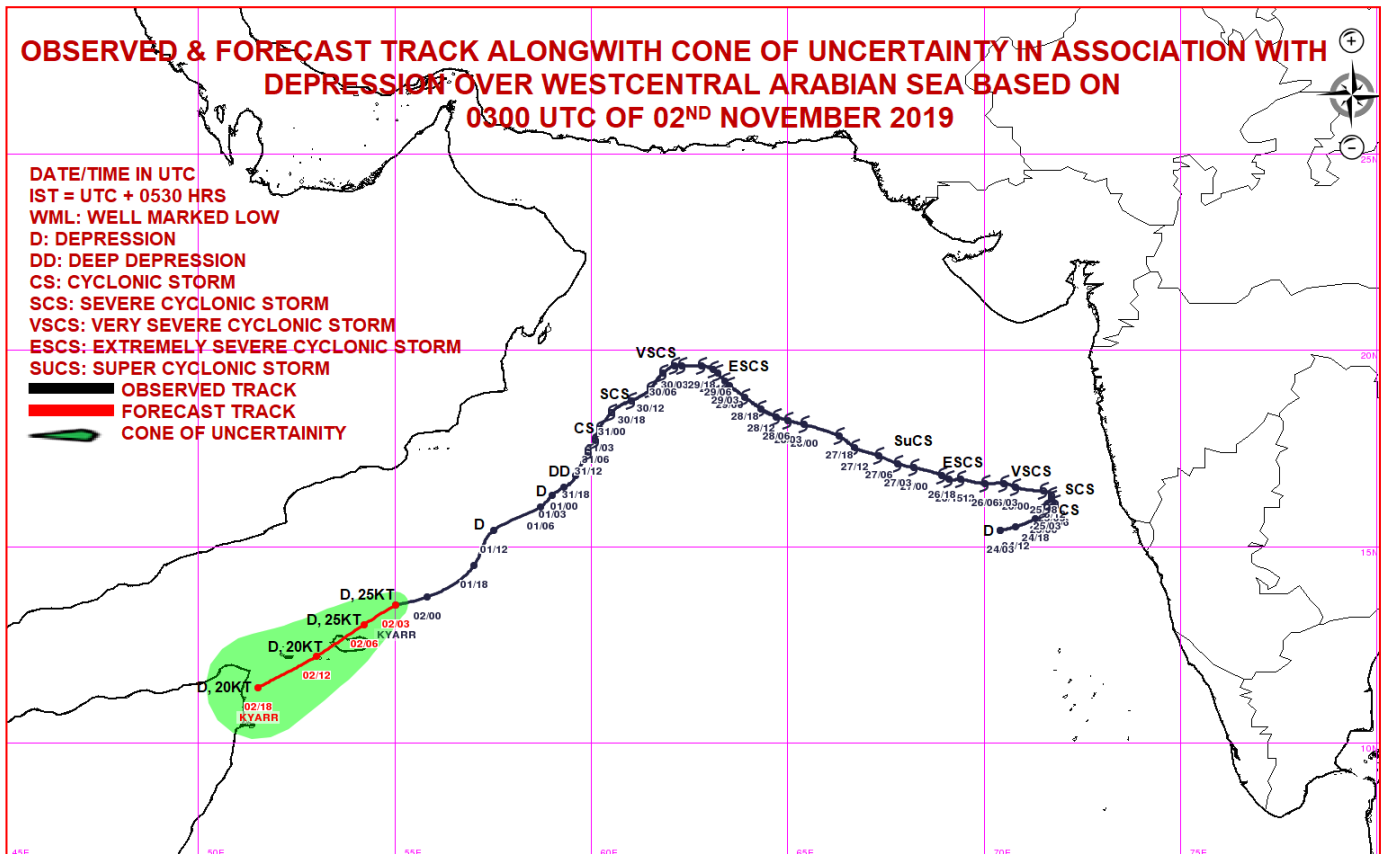
Phone: (91) 11-24652484, FAX: (91) 11-24643128, 24623220, E-mail: cwdhq2008@gmail.com, Website: rsmcnewdelhi.imd.gov.in

Spatial rainfall distribution: Isolated: <25%, A few: 26-50%, Many: 51-75%, Most: 76-100%

Rainfall amount (mm): Heavy rain: 64.5 – 115.5, Very heavy rain: 115.6 – 204.4, Extremely heavy rain: 204.5 or more.

OBSERVED & FORECAST TRACK ALONGWITH CONE OF UNCERTAINTY IN ASSOCIATION WITH DEPRESSION OVER WESTCENTRAL ARABIAN SEA BASED ON 0300 UTC OF 02ND NOVEMBER 2019

DATE/TIME IN UTC
 IST = UTC + 0530 HRS
 WML: WELL MARKED LOW
 D: DEPRESSION
 DD: DEEP DEPRESSION
 CS: CYCLONIC STORM
 SCS: SEVERE CYCLONIC STORM
 VSCS: VERY SEVERE CYCLONIC STORM
 ESCS: EXTREMELY SEVERE CYCLONIC STORM
 SUCS: SUPER CYCLONIC STORM
 — OBSERVED TRACK
 — FORECAST TRACK
 — CONE OF UNCERTAINTY



Contact: Cyclone Warning Division, Office of the Director General of Meteorology,
 India Meteorological Department, Ministry of Earth Sciences.

Phone: (91) 11-24652484, FAX: (91) 11-24643128, 24623220, E-mail: cwdhq2008@gmail.com, Website: rsmcnewdelhi.imd.gov.in

Spatial rainfall distribution: Isolated: <25%, A few: 26-50%, Many: 51-75%, Most: 76-100%

Rainfall amount (mm): Heavy rain: 64.5 – 115.5, Very heavy rain: 115.6 – 204.4, Extremely heavy rain: 204.5 or more.