



Government of India  
Ministry of Earth Sciences  
Earth System Science Organisation



Earth System Science Organisation  
India Meteorological Department

## PRESS RELEASE-7

Time of issue: 1400 hours IST

Dated: 30-10-2019

**Sub: (a) Extremely Severe Cyclonic Storm “KYARR” weakened into a very severe cyclonic storm, (b) Well marked low pressure area over Comorin area & adjoining Equatorial Indian Ocean concentrated into depression**

**(a) Extremely Severe Cyclonic Storm “KYARR” weakened into a very severe cyclonic storm**

Yesterday’s extremely severe cyclonic storm over westcentral and adjoining eastcentral & north Arabian Sea moved west-northwestwards and weakened into a very severe cyclonic storm westcentral and adjoining north Arabian Sea in the early morning (0530 hrs IST) of today, the 30<sup>th</sup> October, 2019. At 0830 hrs IST, it lay over the same region near latitude 19.6°N and longitude 62.1°E, about 1130 km west-northwest of Mumbai (Maharashtra), 910 km east-northeast of Salalah (Oman) and 350 km east-southeast of Masirah (Oman).

**It is very likely to move west-southwestwards across westcentral Arabian Sea during next 4 days. It is very likely to weaken into a Severe Cyclonic Storm by early hours of 31<sup>st</sup> October and into a Cyclonic Storm by evening of 31<sup>st</sup> October, 2019.**

Forecast track and intensity are given in the following table:

Date/Time(IST)	Position (Lat. °N/ long. °E)	Maximum sustained surface wind speed (Kmph)	Category of cyclonic disturbance
30.10.19/0830	19.6/62.1	145-155 gusting to 170	Very Severe Cyclonic Storm
30.10.19/1130	19.5/61.9	135-145 gusting to 160	Very Severe Cyclonic Storm
30.10.19/1730	19.4/61.6	120-130 gusting to 155	Very Severe Cyclonic Storm
30.10.19/2330	19.2/61.3	100-110 gusting to 125	Severe Cyclonic Storm
31.10.19/0530	19.0/61.0	90-100 gusting to 110	Severe Cyclonic Storm
31.11.19/1730	18.5/60.3	75-85 gusting to 95	Cyclonic Storm
01.11.19/0530	17.7/59.3	65-75 gusting to 85	Cyclonic Storm
01.11.19/1730	16.7/58.6	60-70 gusting to 80	Cyclonic Storm
02.11.19/0530	15.7/57.0	50-60 gusting to 70	Deep Depression
02.11.19/1730	14.7/55.9	40-50 gusting to 60	Depression
03.11.19/0530	13.7/54.8	30-40 gusting to 50	Depression

### Warnings:

**(i) Heavy rainfall warning:**

No warning

**(ii) Wind warning**

Gale wind, speed reaching 145-155 kmph gusting to 170 kmph, is prevailing around the system centre over westcentral & adjoining northwest Arabian Sea. It is very likely to reduce gradually becoming 90-100 kmph gusting to 110 kmph by morning of 31<sup>st</sup> October over westcentral Arabian Sea and 65-75 kmph gusting to 85 kmph by the morning of 1<sup>st</sup> November over westcentral Arabian Sea and further decrease thereafter.

Contact: Cyclone Warning Division, Office of the Director General of Meteorology,  
India Meteorological Department, Ministry of Earth Sciences.

Phone: (91) 11-24652484, FAX: (91) 11-24643128, 24623220, E-mail: cwdhq2008@gmail.com, Website: [rsmcnewdelhi.imd.gov.in](http://rsmcnewdelhi.imd.gov.in)

Spatial rainfall distribution: Isolated: <25%, A few: 26-50%, Many: 51-75%, Most: 76-100%

Rainfall amount (mm): Heavy rain: 64.5 – 115.5, Very heavy rain: 115.6 – 204.4, Extremely heavy rain: 204.5 or more.

### (iii) Sea condition

- Sea condition will be phenomenal over westcentral & adjoining northwest Arabian Sea around the system centre till the evening of 30<sup>th</sup> October and become very high to high thereafter till 1<sup>st</sup> November, 2019 evening over westcentral Arabian Sea and very rough to rough on 2<sup>nd</sup> & 3<sup>rd</sup> November, 2019.
- Sea condition will be very high to high over adjoining eastcentral & northwest Arabian Sea during next 24 hours.

### (iv) Fishermen Warning

- The fishermen are advised not to venture into westcentral Arabian Sea till 3<sup>rd</sup> November 2019 and into adjoining north & eastcentral Arabian Sea during next 24 hours.

### (b) Well marked low pressure area over Comorin area & adjoining Equatorial Indian Ocean concentrated into depression

Yesterday's Well Marked Low Pressure Area over Comorin Area & adjoining Equatorial Indian Ocean concentrated into a **depression** over Maldives- Comorin areas in the early morning (0530 hrs IST) of today, the 30<sup>th</sup> October, 2019. It moved northwestwards and lay centered at 0830 hrs IST of today, the 30<sup>th</sup> October, 2019 over Maldives- Comorin and adjoining Lakshadweep area near latitude 8.0°N and longitude 75.0°E, about 450 km north-northeast of Male (Maldives), 200 km east-southeast of Minicoy (Lakshadweep), 380 km southeast of Kavaratti (Lakshadweep) and 220 km west-southwest of Thiruvananthapuram (Kerala).

**It is very likely to move northwestwards across Lakshadweep Islands during next 36 hours and then emerge into eastcentral Arabian Sea. It is very likely to intensify into a Deep Depression during next 24 hours and into a Cyclonic Storm during the subsequent 36 hours.**

Forecast track and intensity are given in the following table:

Date/Time(IST)	Position (Lat. °N/ long. °E)	Maximum sustained surface wind speed (Kmph)	Category of cyclonic disturbance
30.10.19/0830	8.0/75.0	40-50 gusting to 60	Depression
30.10.19/1730	9.1/74.1	40-50 gusting to 60	Depression
31.10.19/0530	10.8/72.9	50-60 gusting to 70	Deep Depression
31.11.19/1730	12.4/71.4	50-60 gusting to 70	Deep Depression
01.11.19/0530	13.7/70.0	50-60 gusting to 70	Deep Depression
01.11.19/1730	14.9/68.2	60-70 gusting to 80	Cyclonic Storm
02.11.19/0530	15.9/66.7	70-80 gusting to 90	Cyclonic Storm

### Warnings:

#### (i) Rainfall:

- Light to moderate rainfall at most places with heavy falls at isolated places very likely over Kerala, Lakshadweep, coastal Karnataka and south Tamilnadu during next 2 days. **Extremely heavy falls** at isolated places are likely over Lakshadweep Islands and heavy to very heavy falls at isolated

Contact: Cyclone Warning Division, Office of the Director General of Meteorology, India Meteorological Department, Ministry of Earth Sciences.

Phone: (91) 11-24652484, FAX: (91) 11-24643128, 24623220, E-mail: cwdhq2008@gmail.com, Website: [rsmcnewdelhi.imd.gov.in](http://rsmcnewdelhi.imd.gov.in)

Spatial rainfall distribution: Isolated: <25%, A few: 26-50%, Many: 51-75%, Most: 76-100%

Rainfall amount (mm): Heavy rain: 64.5 – 115.5, Very heavy rain: 115.6 – 204.4, Extremely heavy rain: 204.5 or more.

place over Kerala during next 48 hours. Heavy to very heavy falls at isolated place are also likely over Tamil Nadu on 30<sup>th</sup> October and over coastal Karnataka on 31<sup>st</sup> October.

**(ii) Wind warning**

- Squally wind speed reaching 40-50 kmph gusting to 60 kmph, very likely to prevail over Comorin-Maldives area during next 24 hours. Squally wind speed reaching 40-50 kmph gusting to 60 kmph very likely to prevail over Lakshadweep area during next 24 hours and 50-60 Kmph gusting to 70 Kmph during the subsequent 24 hours.
- Squally wind speed reaching 35-45 kmph gusting to 55 kmph likely along & off Kerala- Karnataka coasts during next 48 hours.
- Squally wind speed reaching 50-60 kmph gusting to 70 kmph very likely to prevail over southeast & adjoining eastcentral Arabian Sea on 31<sup>st</sup> October and 60-80 kmph gusting to 90 kmph on 1<sup>st</sup> & 2<sup>nd</sup> November, 2019.

**(iii) Sea condition**

- Sea conditions will be rough to very rough over Comorin-Maldives area and along & off Kerala-Karnataka coasts during next 48 hours.
- Sea conditions will be very rough to high over Lakshadweep area during next 48 hours.
- Sea conditions will be very rough to high over southeast & adjoining eastcentral Arabian Sea during 31<sup>st</sup> October to 2<sup>nd</sup> November, 2019.

**(iv) Fishermen Warning**

- The fishermen are advised not to venture into Comorin-Maldives & Lakshadweep area and along & off Kerala-Karnataka coasts during next 48 hours.
- The fishermen are advised not to venture into southeast & eastcentral Arabian Sea during 31<sup>st</sup> October to 2<sup>nd</sup> November, 2019.

Both the systems are under continuous surveillance and concerned state governments are being informed regularly.

Kindly visit [www.imd.gov.in](http://www.imd.gov.in), [www.rsmcnewdelhi.imd.gov.in](http://www.rsmcnewdelhi.imd.gov.in) and [www.mausam.imd.gov.in](http://www.mausam.imd.gov.in) for updates on the system.

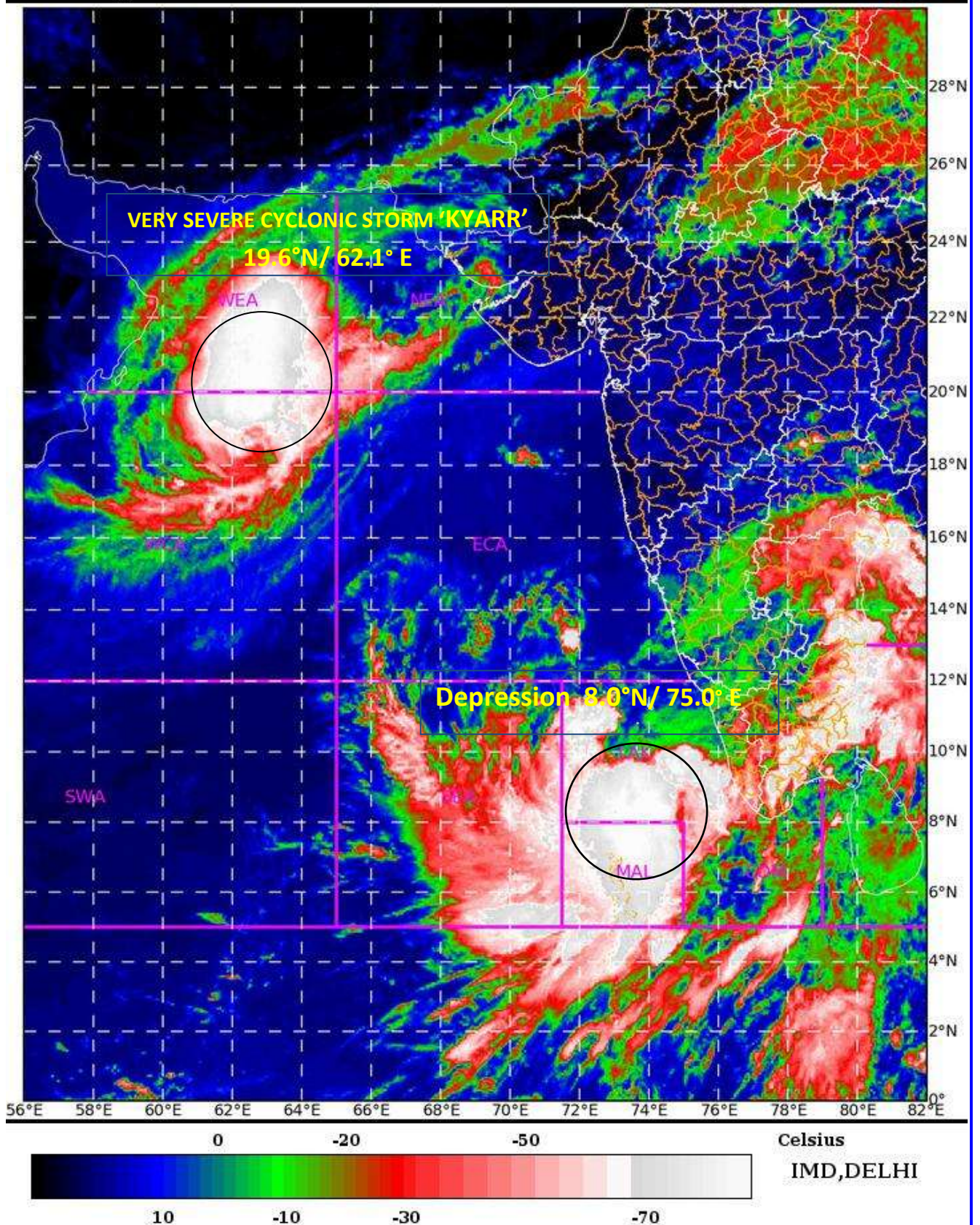
SAT : INSAT-3D IMG

30-10-2019/(0630 to 0657) GMT

IMG\_TIR1\_TEMP 10.8 um

30-10-2019/(1200 to 1227) IST

ARABIAN\_SEA



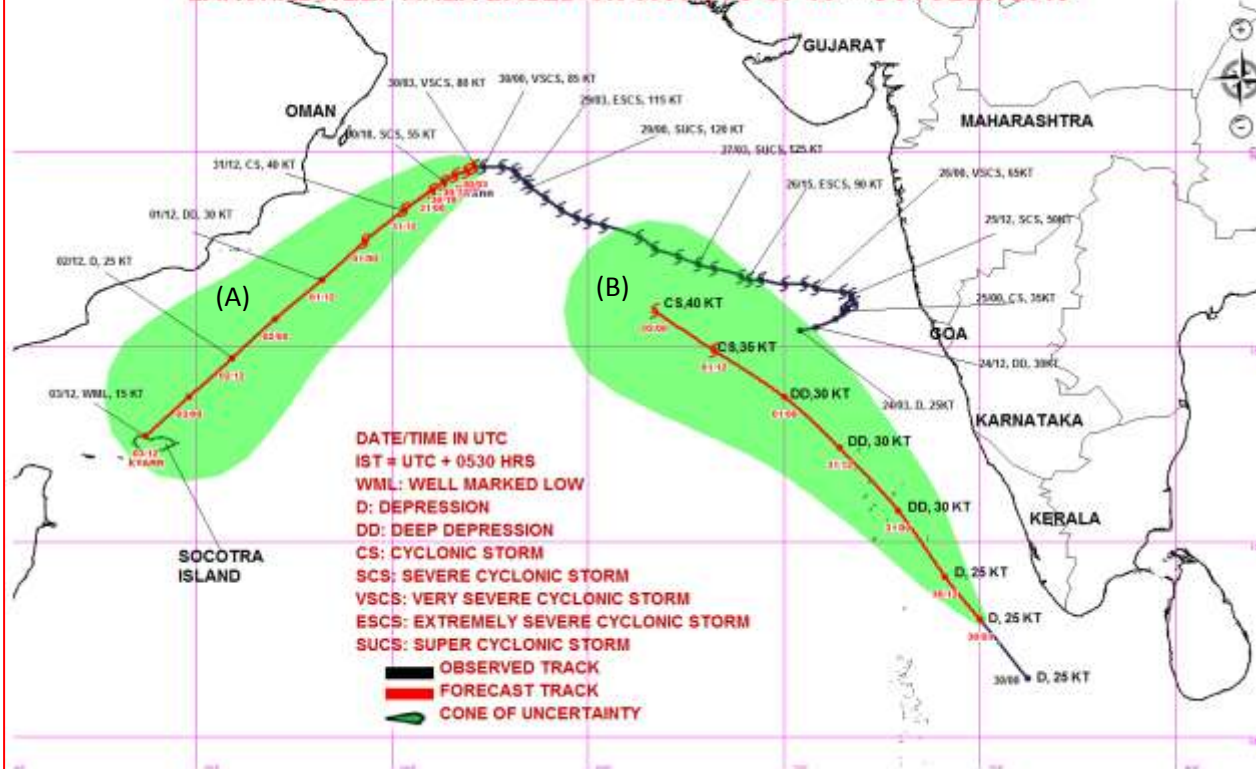
Contact: Cyclone Warning Division, Office of the Director General of Meteorology,  
India Meteorological Department, Ministry of Earth Sciences.

Phone: (91) 11-24652484, FAX: (91) 11-24643128, 24623220, E-mail: [cwdhq2008@gmail.com](mailto:cwdhq2008@gmail.com), Website: [rsmcnewdelhi.imd.gov.in](http://rsmcnewdelhi.imd.gov.in)

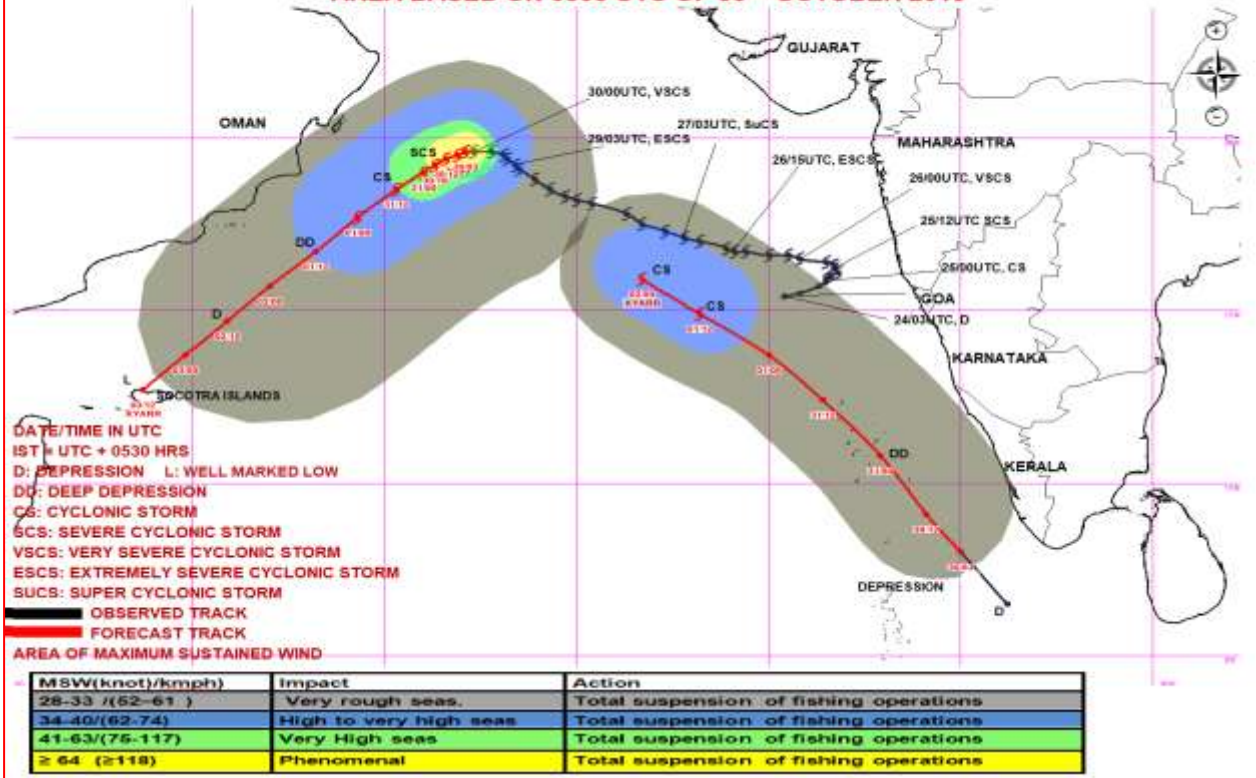
Spatial rainfall distribution: Isolated: <25%, A few: 26-50%, Many: 51-75%, Most: 76-100%

Rainfall amount (mm): Heavy rain: 64.5 – 115.5, Very heavy rain: 115.6 – 204.4, Extremely heavy rain: 204.5 or more.

**OBSERVED & FORECAST TRACK ALONGWITH CONE OF UNCERTAINTY IN ASSOCIATION WITH (A) VERY SEVERE CYCLONIC STORM "KYARR" OVER WESTCENTRAL AND ADJOINING NORTHWEST ARABIAN SEA AND (B) DEPRESSION OVER MALDIVES-COMORIN & ADJOINING LAKSHADWEEP AREA BASED ON 0300 UTC OF 30<sup>TH</sup> OCTOBER 2019**



**OBSERVED & FORECAST TRACK ALONGWITH QUADRANT WIND DISTRIBUTION IN ASSOCIATION WITH (A) VERY SEVERE CYCLONIC STORM "KYARR" OVER WESTCENTRAL AND ADJOINING NW ARABIAN SEA AND (B) DEPRESSION OVER MALDIVES-COMORIN & ADJOINING LAKSHADWEEP AREA BASED ON 0300 UTC OF 30<sup>TH</sup> OCTOBER 2019**



Contact: Cyclone Warning Division, Office of the Director General of Meteorology, India Meteorological Department, Ministry of Earth Sciences.

Phone: (91) 11-24652484, FAX: (91) 11-24643128, 24623220, E-mail: cwdhq2008@gmail.com, Website: [rsmcnewdelhi.imd.gov.in](http://rsmcnewdelhi.imd.gov.in)

Spatial rainfall distribution: Isolated: <25%, A few: 26-50%, Many: 51-75%, Most: 76-100%

Rainfall amount (mm): Heavy rain: 64.5 – 115.5, Very heavy rain: 115.6 – 204.4, Extremely heavy rain: 204.5 or more.