



सत्यमेव जयते
Government of India
Ministry of Earth Sciences



India Meteorological Department

PRESS RELEASE - 1

Time of issue: 1230 hours IST

Dated: 31-05-2020

**Sub: (1) A Low pressure area has formed over southeast and adjoining eastcentral Arabian Sea and Lakshadweep area
(2) Depression over south coastal Oman and adjoining Yemen**

(1) A Low pressure area has formed over southeast and adjoining eastcentral Arabian Sea and Lakshadweep area

A **low pressure area** formed over southeast & adjoining eastcentral Arabian Sea and Lakshadweep area in the early morning (0530 hrs IST) and persisted over the same region during forenoon of today, the 31st May 2020.

It is very likely to concentrate into a depression over eastcentral and adjoining southeast Arabian Sea during next 24 hours and likely to intensify further into a Cyclonic Storm during the subsequent 24 hours. It is very likely to move nearly northwards and reach near north Maharashtra and Gujarat coasts by 3rd June.

(2) Depression over south coastal Oman and adjoining Yemen

A depression formed over south coastal Oman and adjoining yemen in the evening (1430 hrs IST) of 29th May, 2020. It moved northwestwards till morning (0830 hrs IST) of 30th May. Thereafter, it moved slightly southwestwards and lay centered at 0830 hrs IST of today, the 31st May over near latitude 17.0°N and longitude 53.9°E, about 20 km west of Salalah (Oman) and 200 km east-northeast of Al-Ghaydah (Yemen).

It is very likely to maintain the intensity of Depression during next 12 hours and weaken gradually thereafter. It is very likely to move slowly west-southwestwards during the period.

Warnings:

(i) Heavy rainfall warning:

- Light to moderate rainfall at most places with isolated heavy to very heavy falls very likely over Lakshadweep area, Kerala and coastal Karnataka on 31st May & 1st June. Light to moderate rainfall at most places with isolated heavy falls very likely over south Konkan & Goa on 31st May and isolated heavy to very heavy falls on 01st June. Light to moderate rainfall at most places with isolated heavy to very heavy falls very likely over Konkan & Goa on 02nd June and over south Konkan & Goa on 03rd June.
- Light to moderate rainfall at most places with heavy to very heavy falls at a few places and extremely heavy falls at isolated places over north Konkan and north Madhya Maharashtra on 03rd & 04th June.
- Light to moderate rainfall at most places with isolated heavy to very heavy falls very likely over south Gujarat state, Daman, Diu, Dadra & Nagar Haveli on 03rd June and with heavy to very heavy

Contact: Cyclone Warning Division, Office of the Director General of Meteorology,
India Meteorological Department, Ministry of Earth Sciences.

Phone: (91) 11-24652484, FAX: (91) 11-24643128, 24623220, E-mail: cwdhq2008@gmail.com, Website: rsmcnewdelhi.imd.gov.in

Spatial rainfall distribution: Isolated: <25%, A few: 26-50%, Many: 51-75%, Most: 76-100%

Rainfall amount (mm): Heavy rain: 64.5 – 115.5, Very heavy rain: 115.6 – 204.4, Extremely heavy rain: 204.5 or more.

falls at a few places and extremely heavy falls at isolated places over south Gujarat state, Daman, Diu, Dadra & Nagar Haveli and on 04th June.

(ii) Wind warning

- Squally wind, speed reaching 45-55 kmph gusting to 65 kmph, very likely to prevail over southeast & adjoining eastcentral Arabian Sea, Lakshadweep area and along & off Kerala coast during next 48 hours. It will gradually increase becoming gale wind speed reaching 65-75 kmph gusting to 85 kmph over eastcentral Arabian Sea & along and off Karnataka- south Maharashtra coasts from 2nd June morning and further becoming 90-100 kmph gusting 110 kmph over eastcentral and northeast Arabian Sea along & off Maharashtra & Gujarat coasts from 3rd morning.
- Squally wind, speed reaching 45-55 kmph gusting to 65 kmph, very likely to prevail over westcentral Arabian Sea along & off South Oman – Yemen coasts during next 24 hours.

(iii) Sea condition

- The Sea condition is very likely to be rough to very rough over southeast & adjoining eastcentral Arabian Sea and Lakshadweep area during next 24 hours. It would become very rough to high over eastcentral & southeast Arabian Sea and along & off Karnataka- south Maharashtra coasts from 2nd June and high to very high over eastcentral and northeast Arabian Sea along & off Maharashtra & Gujarat coasts from 3rd June.
- The sea condition is very likely to be rough to very rough over westcentral Arabian Sea along & off South Oman – Yemen coasts during next 24 hours.

(iv) Fishermen Warning

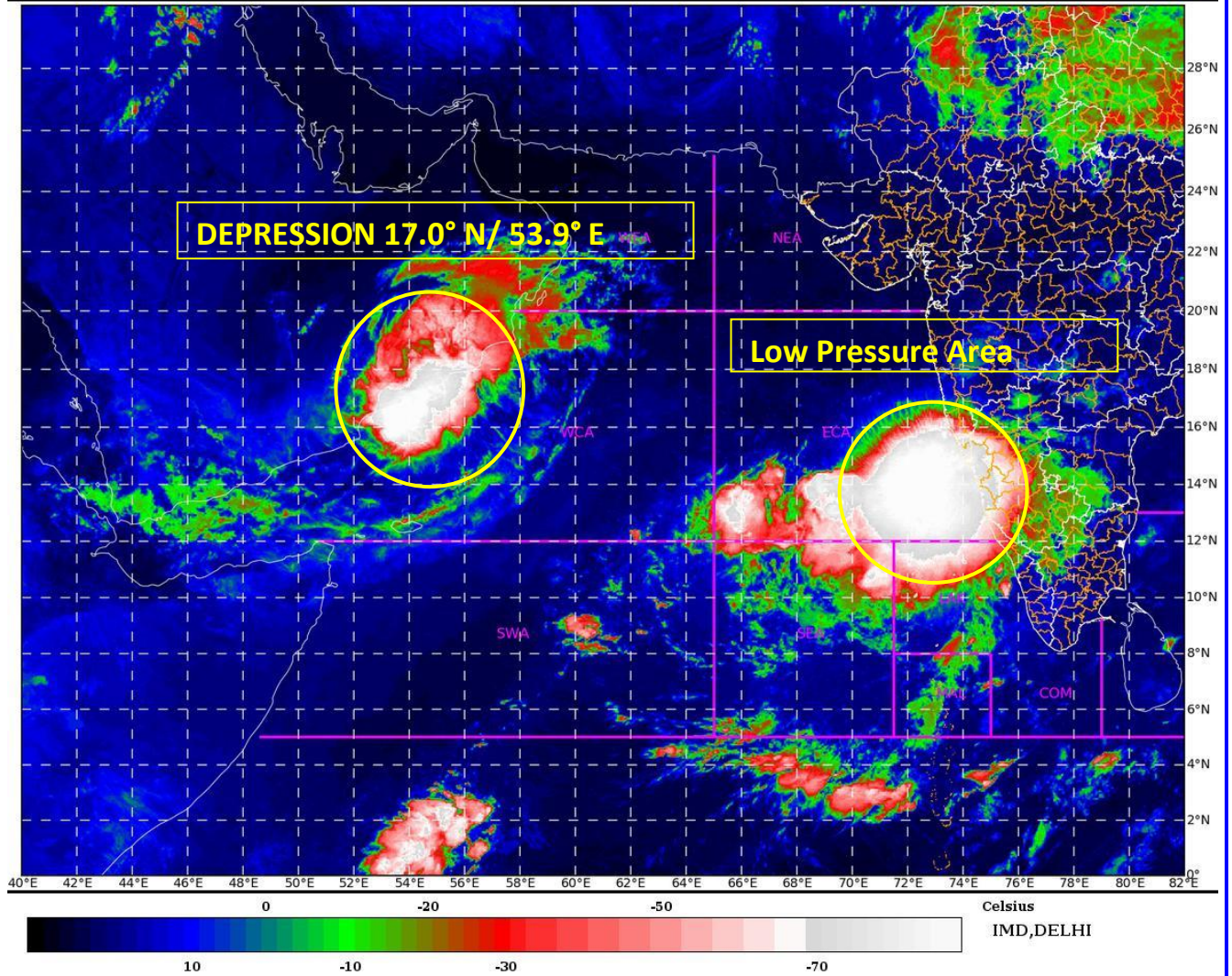
- Fishermen are advised not to venture into southeast Arabian Sea, Lakshadweep area and along & off Kerala coast till 2nd June; into eastcentral Arabian Sea and along & off Karnataka coast till 3rd June ; into eastcentral Arabian Sea along & off Maharashtra coast and northeast Arabian Sea along & off Gujarat coast during 3rd – 4th June. Fishermen out at sea are advised to return to coasts by today, the 31st May.
- The fishermen are advised not to venture into westcentral Arabian Sea along & off south Oman – Yemen coasts during next 24 hours.

Both the systems are under continuous surveillance and the concerned state governments are being informed regularly.

Kindly visit www.rsmcnewdelhi.imd.gov.in and www.mausam.imd.gov.in for updates on the system.

SAT : INSAT-3DR IMG
IMG_TIR1_TEMP 10.8 um
ARABIAN_SEA

31-05-2020/(0045 to 0111) GMT
31-05-2020/(0615 to 0641) IST

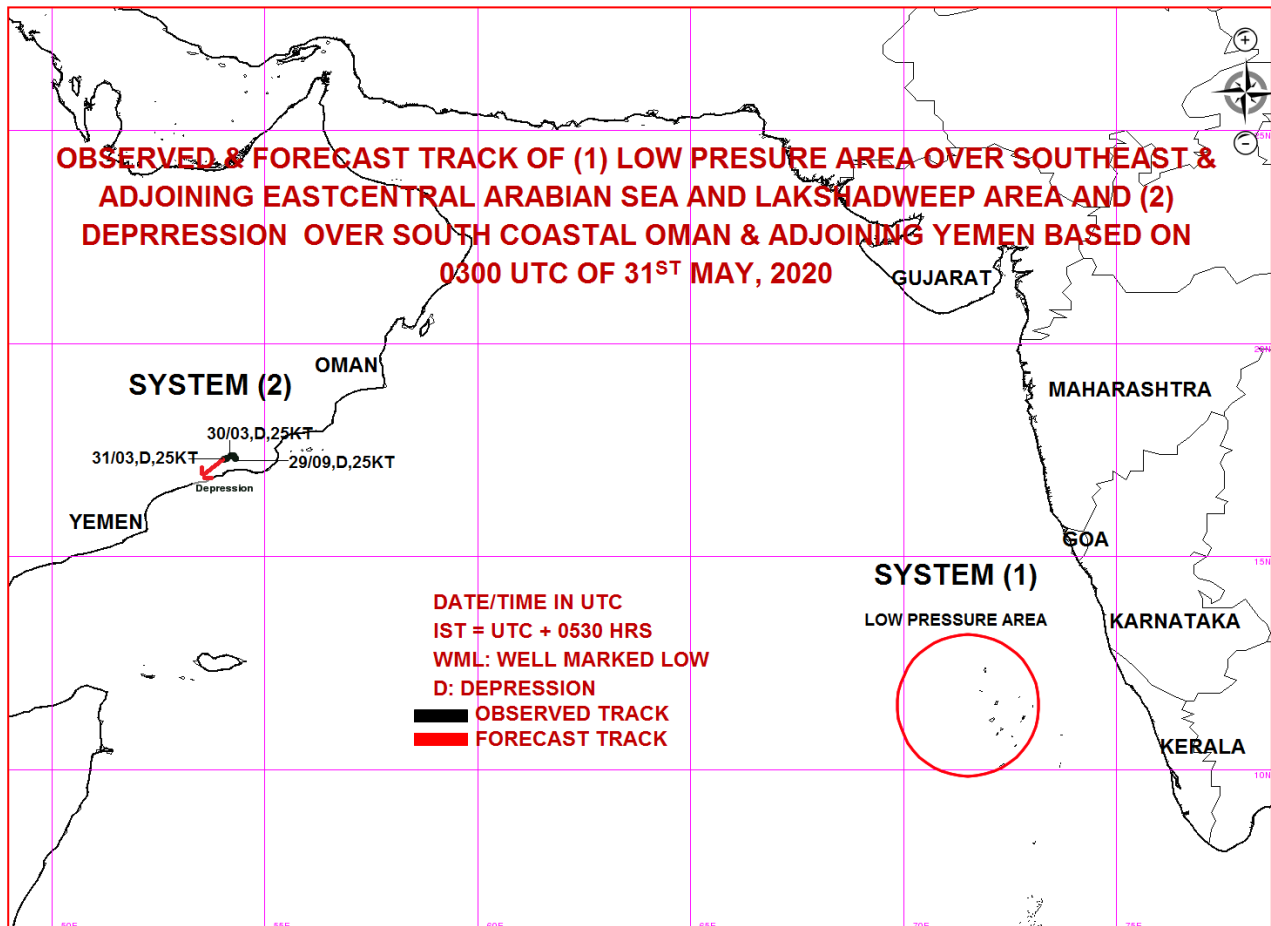


Contact: Cyclone Warning Division, Office of the Director General of Meteorology,
India Meteorological Department, Ministry of Earth Sciences.

Phone: (91) 11-24652484, FAX: (91) 11-24643128, 24623220, E-mail: cwdhq2008@gmail.com, Website: rsmcnewdelhi.imd.gov.in

Spatial rainfall distribution: Isolated: <25%, A few: 26-50%, Many: 51-75%, Most: 76-100%

Rainfall amount (mm): Heavy rain: 64.5 – 115.5, Very heavy rain: 115.6 – 204.4, Extremely heavy rain: 204.5 or more.



Contact: Cyclone Warning Division, Office of the Director General of Meteorology,
 India Meteorological Department, Ministry of Earth Sciences.

Phone: (91) 11-24652484, FAX: (91) 11-24643128, 24623220, E-mail: cwdhq2008@gmail.com, Website: rsmcnewdelhi.imd.gov.in

Spatial rainfall distribution: Isolated: <25%, A few: 26-50%, Many: 51-75%, Most: 76-100%

Rainfall amount (mm): Heavy rain: 64.5 – 115.5, Very heavy rain: 115.6 – 204.4, Extremely heavy rain: 204.5 or more.