



Government of India  
Ministry of Earth Sciences  
Earth System Science Organisation



Earth System Science Organisation  
India Meteorological Department

## PRESS RELEASE-8

Time of issue: 1200 hours IST

Dated: 31-10-2019

**Sub: (a) Depression over Maldives–Comorin areas intensified into Cyclonic Storm “MAHA” (b) Very Severe Cyclonic Storm “KYARR” weakened into a cyclonic storm**

**(a) Depression over Maldives–Comorin areas intensified into Cyclonic Storm “MAHA” (CYCLONE WARNING FOR LAKSHADWEEP ISLANDS)**

Yesterday’s depression over Maldives- Comorin areas intensified into a deep depression in the same afternoon (1430 hrs IST) over Lakshadweep and adjoining southeast Arabian Sea & Maldives area and into the cyclonic storm “MAHA” (Pronounced as M’maha) in the same evening (1730 hrs IST) over Lakshadweep and adjoining southeast Arabian Sea and Maldives area. At 0830 hrs IST of today, the 31<sup>st</sup> October, it lay over Lakshadweep and adjoining southeast Arabian Sea near latitude 11.5°N and longitude 72.8°E, about 40 km north-northeast of Aminidivi (Lakshadweep), 110 km north-northeast of Kavaratti (Lakshadweep), 350 km north-northwest of Minicoy (Lakshadweep) and 325 km west-northwest of Kozhikode (Kerala).

It is very likely to continue to move north-northwestwards across Lakshadweep Islands during next 12 hours. Then, it is very likely to move northwestwards, emerge into eastcentral Arabian Sea during subsequent 12 hours and thereafter move west-northwestwards. It is very likely to intensify into a Severe Cyclonic Storm during next 06 hours over Lakshadweep area and adjoining southeast & eastcentral Arabian Sea and into a very severe cyclonic storm over eastcentral Arabian Sea during subsequent 24 hours.

Forecast track and intensity are given in the following table:

Date/Time(IST)	Position (Lat. °N/ long. °E)	Maximum sustained surface wind speed (Kmph)	Category of cyclonic disturbance
31.10.19/0830	11.5/72.8	80-90 gusting to 100	Cyclonic Storm
31.10.19/1130	11.8/72.6	90-100 gusting to 110	Severe Cyclonic Storm
31.10.19/1730	12.6/72.2	100-110 gusting to 120	Severe Cyclonic Storm
31.10.19/2330	13.5/71.6	110-120 gusting to 135	Severe Cyclonic Storm
01.11.19/0530	14.3/71.1	120-130 gusting to 145	Very Severe Cyclonic Storm
01.11.19/1730	15.4/69.6	120-130 gusting to 145	Very Severe Cyclonic Storm
02.11.19/0530	16.2/68.4	130-140 gusting to 155	Very Severe Cyclonic Storm
02.11.19/1730	16.8/67.1	130-140 gusting to 155	Very Severe Cyclonic Storm
03.11.19/0530	17.2/65.9	140-150 gusting to 170	Very Severe Cyclonic Storm
03.11.19/1730	17.3/64.8	140-150 gusting to 170	Very Severe Cyclonic Storm
04.11.19/0530	17.3/63.2	150-160 gusting to 180	Very Severe Cyclonic Storm
04.11.19/1730	17.4/61.8	150-160 gusting to 180	Very Severe Cyclonic Storm

### Warnings:

#### (i) Rainfall:

- Light to moderate rainfall at most places with heavy to very heavy falls at a few places and extremely heavy falls at isolated places very likely over Lakshadweep Islands during next 24 hours.
- Light to moderate rainfall at most places with heavy to very heavy falls at isolated places very likely over Kerala, coastal Karnataka and south Tamil Nadu during next 24 hours.

#### (ii) Wind warning

- Gale wind speed reaching 80-90 kmph gusting to 100 kmph is prevailing over Lakshadweep area around the system centre. It is very likely to increase becoming 100-110 kmph gusting to 120 kmph

Contact: Cyclone Warning Division, Office of the Director General of Meteorology, India Meteorological Department, Ministry of Earth Sciences.

Phone: (91) 11-24652484, FAX: (91) 11-24643128, 24623220, E-mail: [cwdhq2008@gmail.com](mailto:cwdhq2008@gmail.com), Website: [rsmcnewdelhi.imd.gov.in](http://rsmcnewdelhi.imd.gov.in)

Spatial rainfall distribution: Isolated: <25%, A few: 26-50%, Many: 51-75%, Most: 76-100%

Rainfall amount (mm): Heavy rain: 64.5 – 115.5, Very heavy rain: 115.6 – 204.4, Extremely heavy rain: 204.5 or more.

over north Lakshadweep Islands and adjoining southeast & east-central Arabian Sea and 65-75 kmph gusting to 85 kmph over south Lakshadweep Islands and adjoining sea areas during next 06 hours. It is very likely decrease gradually over these areas thereafter.

- Gale wind speed is very likely to increase gradually over east-central Arabian Sea becoming 120-130 kmph gusting to 145 kmph by 1<sup>st</sup> November Morning, 130-140 kmph gusting to 155 kmph likely over eastcentral Arabian Sea by 2<sup>nd</sup> November morning and 150-160 kmph gusting to 180 kmph by 04<sup>th</sup> November morning.
- Squally wind speed reaching 40-50 kmph gusting to 60 kmph likely along & off Kerala- Karnataka coasts during next 24 hours.
- Squally wind speed reaching 40-50 kmph gusting to 60 kmph very likely to prevail over Comorin-Maldives area during next 06 hours and decrease thereafter.

#### **(iii) Sea condition**

- Sea conditions over Lakshadweep area and adjoining southeast Arabian Sea will be high to very high during next 24 hours and rough to very rough for subsequent 24 hours.
- Sea condition over eastcentral Arabian Sea will be very rough to high during next 06 hours and very high to phenomenal during subsequent 3 days.
- Sea conditions will be rough to very rough over Comorin-Maldives area during next 06 hours and along & off Kerala- Karnataka coasts during next 24 hours.

#### **(iv) Storm Surge Warning**

- Tidal wave of about 1 meter height above the astronomical tide is very likely to inundate low lying areas of Lakshadweep Islands during next 12 hours.

#### **(v) Fishermen Warning**

- Total suspension of fishing operations over Comorin-Maldives during next 12 hours & Lakshadweep area and adjoining southeast Arabian Sea and along & off Kerala-Karnataka coasts during next 24 hours.
- The fishermen are advised not to venture over eastcentral Arabian Sea till 4<sup>th</sup> November, 2019.

#### **(vi) Damage Expected over Lakshadweep Islands during next 12 hours:**

- Major damage to thatched houses/ huts. Roof tops may blow off. Unattached metal sheets may fly.
- Damage to power and communication lines.
- Major damage to Kutcha and some damage to Pucca roads. Flooding of escape routes.
- Breaking of tree branches, uprooting of trees. Damage to banana and papaya trees. Dead limbs blown from trees.
- Major damage to coastal crops.
- Damage to embankments/ salt pans.

#### **Realised weather:**

**Rainfall:** Rainfall at most places with heavy to very heavy falls at a few places and isolated extremely heavy falls occurred over Lakshadweep during past 24 hrs. Amini Divi reported maximum 24 hrs rainfall of 30 cm ending at 0830 hrs IST of 31st October.

**Wind:** Maximum wind speed of 72 kmph has been reported by Amini Divi during morning hours of today, the 31<sup>st</sup> October, 2019.

---

Contact: Cyclone Warning Division, Office of the Director General of Meteorology,  
India Meteorological Department, Ministry of Earth Sciences.

Phone: (91) 11-24652484, FAX: (91) 11-24643128, 24623220, E-mail: [cwdhq2008@gmail.com](mailto:cwdhq2008@gmail.com), Website: [rsmcnewdelhi.imd.gov.in](http://rsmcnewdelhi.imd.gov.in)

Spatial rainfall distribution: Isolated: <25%, A few: 26-50%, Many: 51-75%, Most: 76-100%

Rainfall amount (mm): Heavy rain: 64.5 – 115.5, Very heavy rain: 115.6 – 204.4, Extremely heavy rain: 204.5 or more.

## **(b) Very Severe Cyclonic Storm “KYARR” weakened into a cyclonic storm**

Yesterday’s very severe cyclonic storm over westcentral and adjoining north Arabian Sea weakened into a severe cyclonic storm in the midnight (2330 hrs IST of 30<sup>th</sup> October). Moving southwestwards, it further weakened into a cyclonic storm in the morning (0830 hrs IST) of today, the 31<sup>st</sup> October 2019 and lay centered over westcentral Arabian Sea near latitude 18.0°N and longitude 60.2°E, about 1330 km west-southwest of Mumbai (Maharashtra), 670 km east-northeast of Salalah (Oman) and 320 km south-southeast of Masirah (Oman). It is very likely to move southwestwards across westcentral Arabian Sea during next 3 days. It is very likely to weaken into a Deep Depression during next 18 hours and further into a Depression during subsequent 06 hours.

Forecast track and intensity are given in the following table:

Date/Time(IST)	Position (Lat. °N/ long. °E)	Maximum sustained surface wind speed (Kmph)	Category of cyclonic disturbance
31.10.19/0830	18.0/60.2	80-90 gusting to 100	Cyclonic Storm
31.10.19/1130	17.7/59.9	75-85 gusting to 95	Cyclonic Storm
31.10.19/1730	17.4/59.6	65-75 gusting to 85	Cyclonic Storm
31.10.19/2330	17.0/59.1	55-65 gusting to 75	Deep Depression
01.11.19/0530	16.5/58.5	45-55 gusting to 65	Depression
01.11.19/1730	15.2/56.9	35-45 gusting to 55	Depression
02.11.19/0530	13.9/54.9	25-35 gusting to 45	Well Marked Low

### **Warnings:**

#### **(i) Wind warning**

- Gale wind speed reaching 80-90 kmph gusting to 100 kmph is prevailing around the system centre over westcentral Arabian Sea. It is very likely to reduce gradually becoming 45-55 kmph gusting to 65 kmph in the morning of 01<sup>st</sup> November over westcentral Arabian Sea and 25-35 kmph gusting to 45 kmph by the morning of 2<sup>nd</sup> November over westcentral Arabian Sea and decrease thereafter.

#### **(ii) Sea condition**

- Sea condition is high over westcentral Arabian Sea around the system centre. It will become very rough from 1<sup>st</sup> November morning and thereafter rough till 2<sup>nd</sup> November noon over the same region.

#### **(iii) Fishermen Warning**

- The fishermen are advised not to venture into westcentral Arabian Sea till 2<sup>nd</sup> November forenoon.

Both the systems are under continuous surveillance and concerned state governments are being informed regularly.

Kindly visit [www.imd.gov.in](http://www.imd.gov.in), [www.rsmcnewdelhi.imd.gov.in](http://www.rsmcnewdelhi.imd.gov.in) and [www.mausam.imd.gov.in](http://www.mausam.imd.gov.in) for updates on the system.

Contact: Cyclone Warning Division, Office of the Director General of Meteorology,  
India Meteorological Department, Ministry of Earth Sciences.

Phone: (91) 11-24652484, FAX: (91) 11-24643128, 24623220, E-mail: [cwdhq2008@gmail.com](mailto:cwdhq2008@gmail.com), Website: [rsmcnewdelhi.imd.gov.in](http://rsmcnewdelhi.imd.gov.in)

Spatial rainfall distribution: Isolated: <25%, A few: 26-50%, Many: 51-75%, Most: 76-100%

Rainfall amount (mm): Heavy rain: 64.5 – 115.5, Very heavy rain: 115.6 – 204.4, Extremely heavy rain: 204.5 or more.

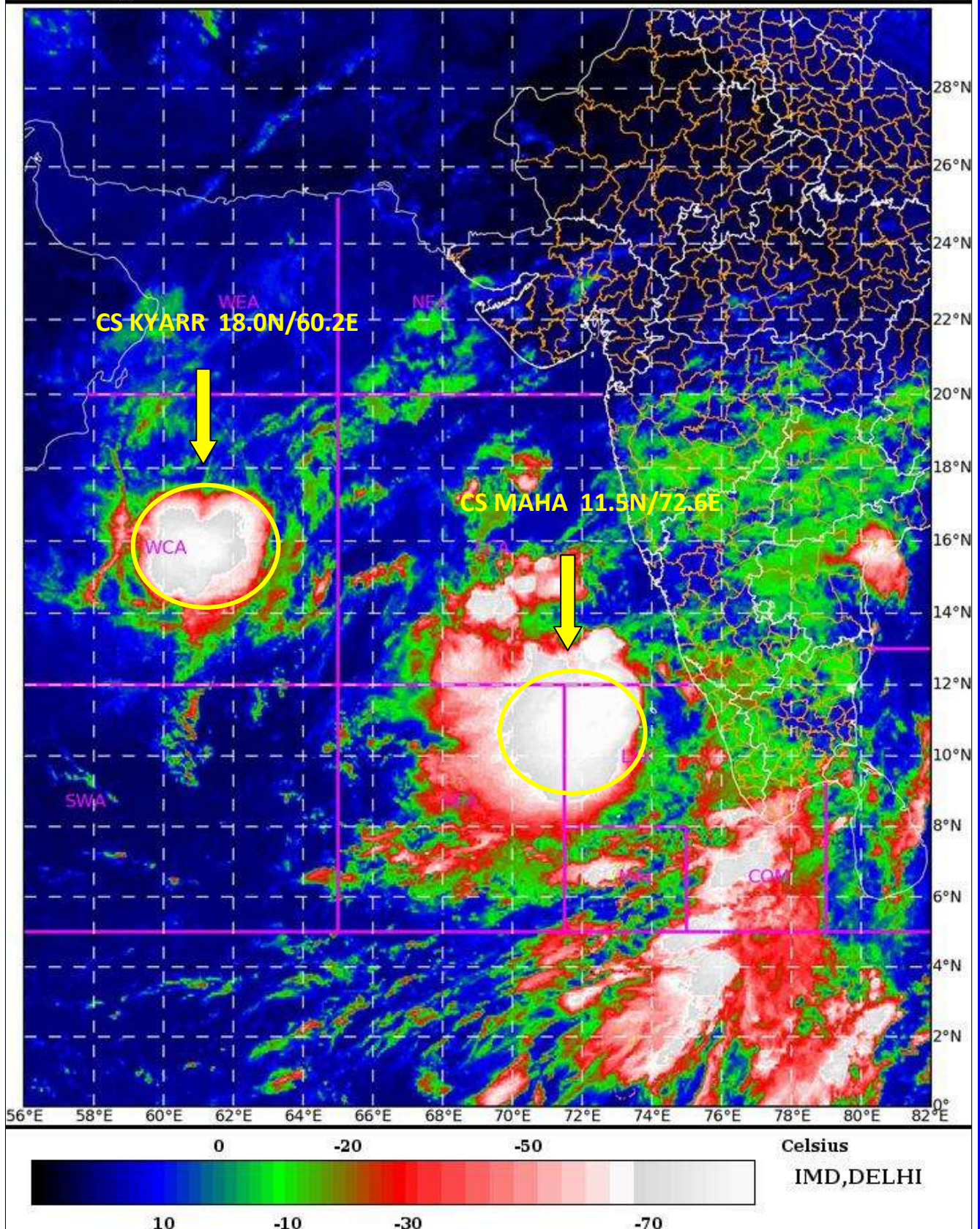
SAT : INSAT-3D IMG

31-10-2019/(0430 to 0456) GMT

IMG\_TIR1\_TEMP 10.8 um

31-10-2019/(1000 to 1026) IST

ARABIAN\_SEA



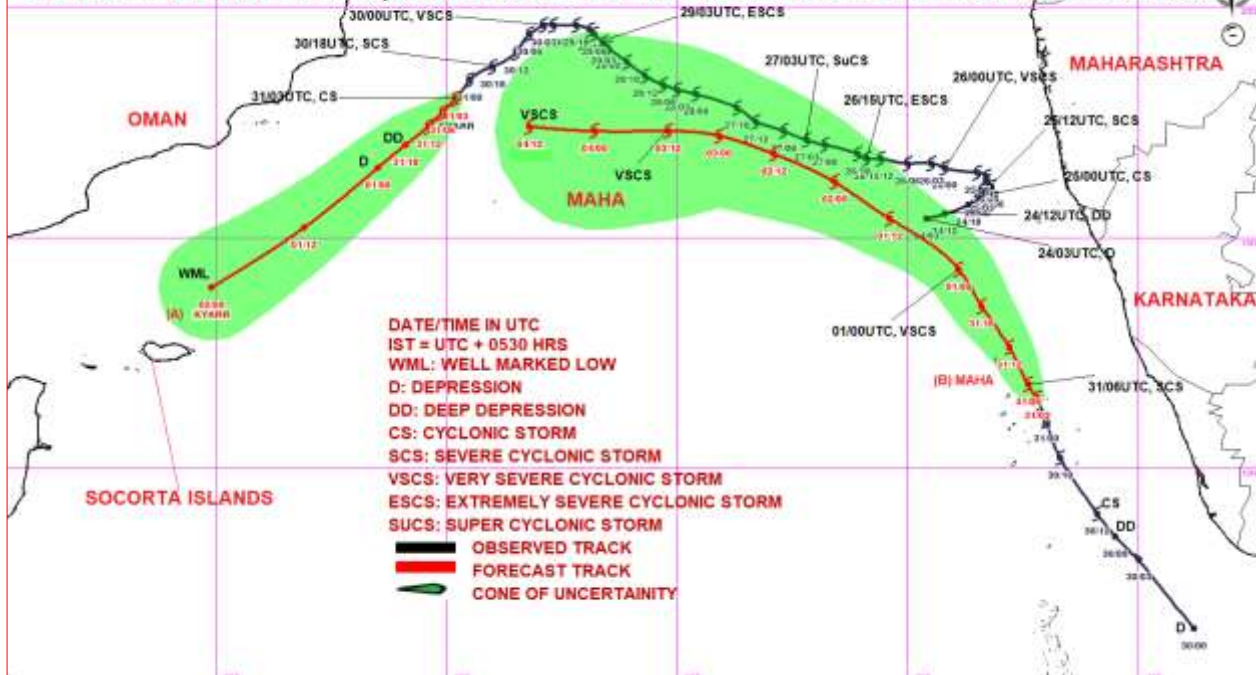
Contact: Cyclone Warning Division, Office of the Director General of Meteorology,  
India Meteorological Department, Ministry of Earth Sciences.

Phone: (91) 11-24652484, FAX: (91) 11-24643128, 24623220, E-mail: [cwdhq2008@gmail.com](mailto:cwdhq2008@gmail.com), Website: [rsmcnewdelhi.imd.gov.in](http://rsmcnewdelhi.imd.gov.in)

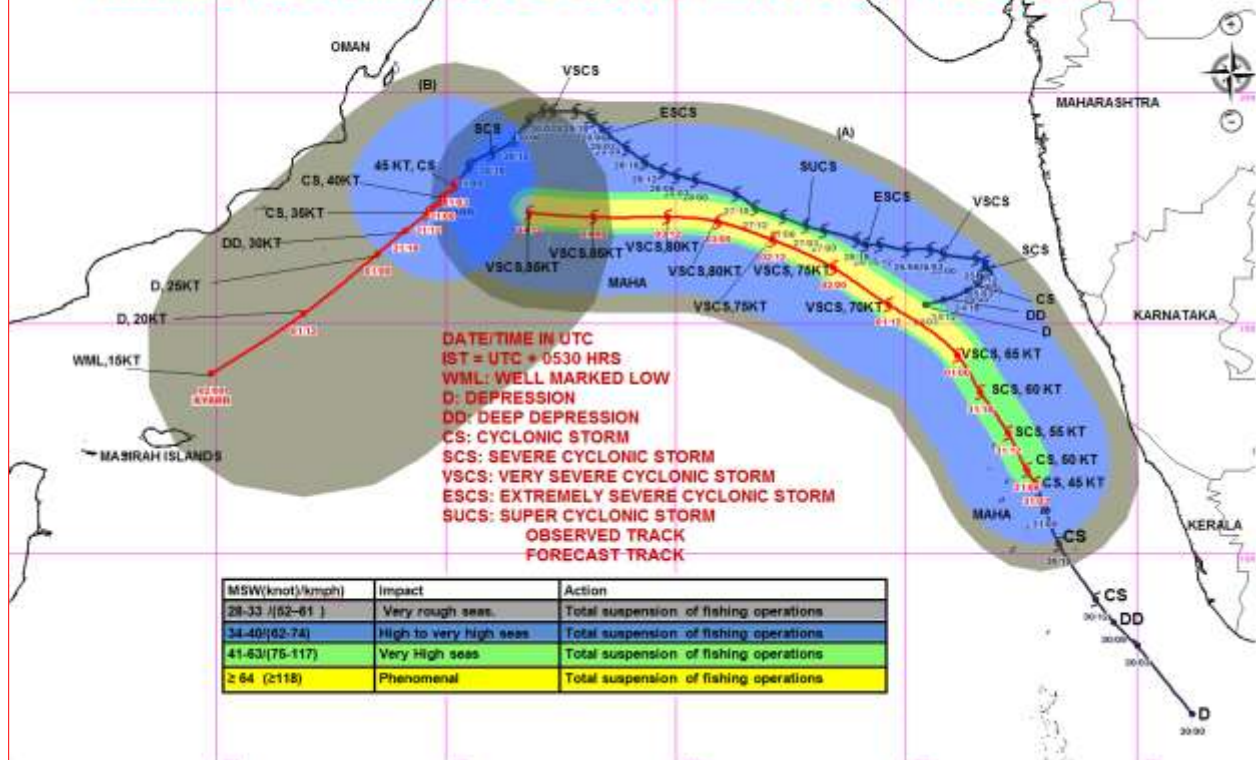
Spatial rainfall distribution: Isolated: <25%, A few: 26-50%, Many: 51-75%, Most: 76-100%

Rainfall amount (mm): Heavy rain: 64.5 – 115.5, Very heavy rain: 115.6 – 204.4, Extremely heavy rain: 204.5 or more.

**OBSERVED & FORECAST TRACK ALONGWITH CONE OF UNCERTAINTY IN ASSOCIATION WITH (A) CYCLONIC STORM "KYARR" OVER WESTCENTRAL AND ADJOINING NORTHWEST ARABIAN SEA AND (B) CYCLONIC STORM "MAHA" OVER LAKSHADWEEP & ADJOINING MALDIVES AREA & SOUTHEAST ARABIAN SEA BASED ON 0300 UTC OF 31<sup>ST</sup> OCTOBER 2019**



**OBSERVED & FORECAST TRACK ALONGWITH QUADRANT WIND DISTRIBUTION IN ASSOCIATION WITH (A) CYCLONIC STORM "MAHA" OVER LAKSHADWEEP & ADJOINING SOUTHEAST ARABIAN SEA AND (B) VERY SEVERE CYCLONIC STORM "KYARR" OVER WESTCENTRAL ARABIAN SEA AND BASED ON 0300 UTC OF 31<sup>ST</sup> OCTOBER 2019**



Contact: Cyclone Warning Division, Office of the Director General of Meteorology, India Meteorological Department, Ministry of Earth Sciences.

Phone: (91) 11-24652484, FAX: (91) 11-24643128, 24623220, E-mail: cwdhq2008@gmail.com, Website: [rsmcnewdelhi.imd.gov.in](http://rsmcnewdelhi.imd.gov.in)

Spatial rainfall distribution: Isolated: <25%, A few: 26-50%, Many: 51-75%, Most: 76-100%

Rainfall amount (mm): Heavy rain: 64.5 – 115.5, Very heavy rain: 115.6 – 204.4, Extremely heavy rain: 204.5 or more.