



Government of India
Ministry of Earth Sciences
Earth System Science Organisation



Earth System Science Organisation
India Meteorological Department

PRESS RELEASE- 1

Time of issue: 1100 hours IST

Dated: 03-12-2019

**Sub: (a) Deep Depression over southwest Arabian Sea
(b) Well Marked Low pressure area over southeast Arabian Sea and adjoining areas of eastcentral Arabian Sea and Lakshadweep region**

(a) Deep Depression over southwest Arabian Sea

A low pressure area developed over southwest Arabian Sea (AS) and adjoining equatorial Indian Ocean in the early morning (0530 hrs IST) of 1st December, 2019. It lay as a well marked low pressure area over the same region in the early morning (0530 hrs IST) of 2nd December. Under favourable environmental conditions, it concentrated into a depression over southwest Arabian Sea & adjoining equatorial Indian Ocean in the same evening (1730 hrs IST). Moving north-northwestwards, it further intensified into a deep depression over southwest Arabian Sea & adjoining equatorial Indian Ocean in the early morning (0530 hrs IST) of today, the 3rd December. It lay centred at 0830 hrs IST near latitude 6.7°N and longitude 56.3°E over southwest Arabian Sea, about 710 km south-southeast of Socotra (Yemen) and 930 km southeast of Bosaso (Somalia).

It is very likely to intensify into a cyclonic storm during next 12 hours. It is very likely to move north-northwestwards initially and then west-northwestwards towards Somalia coast during next 4 days.

Forecast track and intensity are given in the following table:

Date/Time(IST)	Position (Lat. °N/ long. °E)	Maximum sustained surface wind speed (Kmph)	Category of cyclonic disturbance
03.12.19/0830	6.7/56.3	50-60 gusting to 70	Deep Depression
03.12.19/1130	6.8/56.2	55-65 gusting to 75	Deep Depression
03.12.19/1730	6.9/56.1	60-70 gusting to 80	Cyclonic Storm
03.12.19/2330	7.0/56.1	65-75 gusting to 85	Cyclonic Storm
04.12.19/0530	7.1/56.0	70-80 gusting to 90	Cyclonic Storm
04.12.19/1730	7.4/55.8	70-80 gusting to 90	Cyclonic Storm
05.12.19/0530	8.1/55.0	65-75 gusting to 85	Cyclonic Storm
05.12.19/1730	8.5 /53.6	55-65 gusting to 75	Deep Depression
06.12.19/0530	7.7/51.4	40-50 gusting to 60	Depression
06.12.19/1730	6.8 /49.5	35-45 gusting to 55	Depression

(b) Well Marked Low pressure area over southeast Arabian Sea and adjoining areas of eastcentral Arabian Sea and Lakshadweep region

Another low pressure area formed over southeast Arabian Sea (AS) and adjoining Lakshadweep area in the morning (0830 hrs IST) of 1st December, 2019. It lay as a well marked low pressure area over southeast AS and adjoining areas of eastcentral AS & Lakshadweep region. It is very likely to concentrate into a depression during next 24 hours.

Contact: Cyclone Warning Division, Office of the Director General of Meteorology,
India Meteorological Department, Ministry of Earth Sciences.

Phone: (91) 11-24652484, FAX: (91) 11-24643128, 24623220, E-mail: cwdhq2008@gmail.com, Website: rsmcnewdelhi.imd.gov.in

Spatial rainfall distribution: Isolated: <25%, A few: 26-50%, Many: 51-75%, Most: 76-100%

Rainfall amount (mm): Heavy rain: 64.5 – 115.5, Very heavy rain: 115.6 – 204.4, Extremely heavy rain: 204.5 or more.

Warnings:

(i) Rainfall:

- **Lakshadweep:** Light to moderate rainfall at most places with heavy falls at isolated places during next 24 hours and Light to moderate rainfall at many places during subsequent 24 hours.
- **Kerala:** Light to moderate rainfall at many places during next 24 hours.
- **Tamil Nadu, Puducherry & Karaikal:** Light to moderate rainfall at many places over south Tamil Nadu during next 24 hours.
- **Coastal & south Interior Karnataka:** Light to moderate rainfall at a few places during next 24 hours.
- **South Maharashtra & Goa:** Light to moderate rainfall at a few places during next 48 hours.

(ii) Wind warning

- Squally wind speed reaching 50-60 kmph gusting to 70 kmph very likely to prevail over southwest Arabian Sea during next 12 hours and Gale Wind, speed reaching 60-70 gusting 80 kmph during subsequent 12 hours. Squally wind speed reaching 40-50 kmph gusting to 60 kmph over Southeast Arabian Sea and adjoining areas of Eastcentral Arabian Sea & Lakshadweep area, along & off Kerala & Karnataka coasts during next 24 hours.
- It is very likely to further increase becoming Gale wind speed reaching 70-80 kmph gusting to 90 kmph over southwest Arabian Sea and along & off Somalia coast from 04th December morning. Squally wind speed reaching 45-55 kmph gusting to 65 kmph likely to prevail over Lakshadweep area & adjoining southeast & east central Arabian Sea, along & Karnataka and Maharashtra - Goa coasts on 04th December.
- Squally wind speed reaching 55-65 kmph gusting to 75 kmph, likely to prevail over southwest Arabian Sea and along & off Somalia coast from 5th December. Squally weather (wind speed 40-50 kmph gusting to 60 kmph) likely to prevail over eastcentral Arabian Sea on 5th December.

(iii) Sea condition

- The Sea condition is very likely to remain rough to very rough Lakshadweep area & adjoining southeast Arabian Sea, along & off Kerala & Karnataka coasts during next 24 hours.
- Very rough Sea Conditions are prevailing over Southwest Arabian Sea and is very likely to become very rough to High over southwest Arabian Sea and along & off Somalia coast from today evening and continue to remain rough to very rough over east central Arabian Sea and along & off Karnataka – Maharashtra- Goa coasts on 3rd & 4th December.

(iv) Fishermen Warning

- The fishermen are advised not to venture into southwest Arabian Sea and along & off Somalia coast during next 4 days.
- The fishermen are also advised not to venture into Southeast Arabian Sea and adjoining areas of Eastcentral Arabian Sea & Lakshadweep area, along & off Kerala & Karnataka coasts during next 24 hours and over southeast & adjoining east central Arabian Sea and along & off Karnataka - Maharashtra – Goa coasts on 3rd & 4th December 2019.

Both the systems are under continuous surveillance and concerned state governments are being informed regularly.

Kindly visit www.imd.gov.in, www.rsmcnewdelhi.imd.gov.in and www.mausam.imd.gov.in for updates on the system.

Contact: Cyclone Warning Division, Office of the Director General of Meteorology,
India Meteorological Department, Ministry of Earth Sciences.

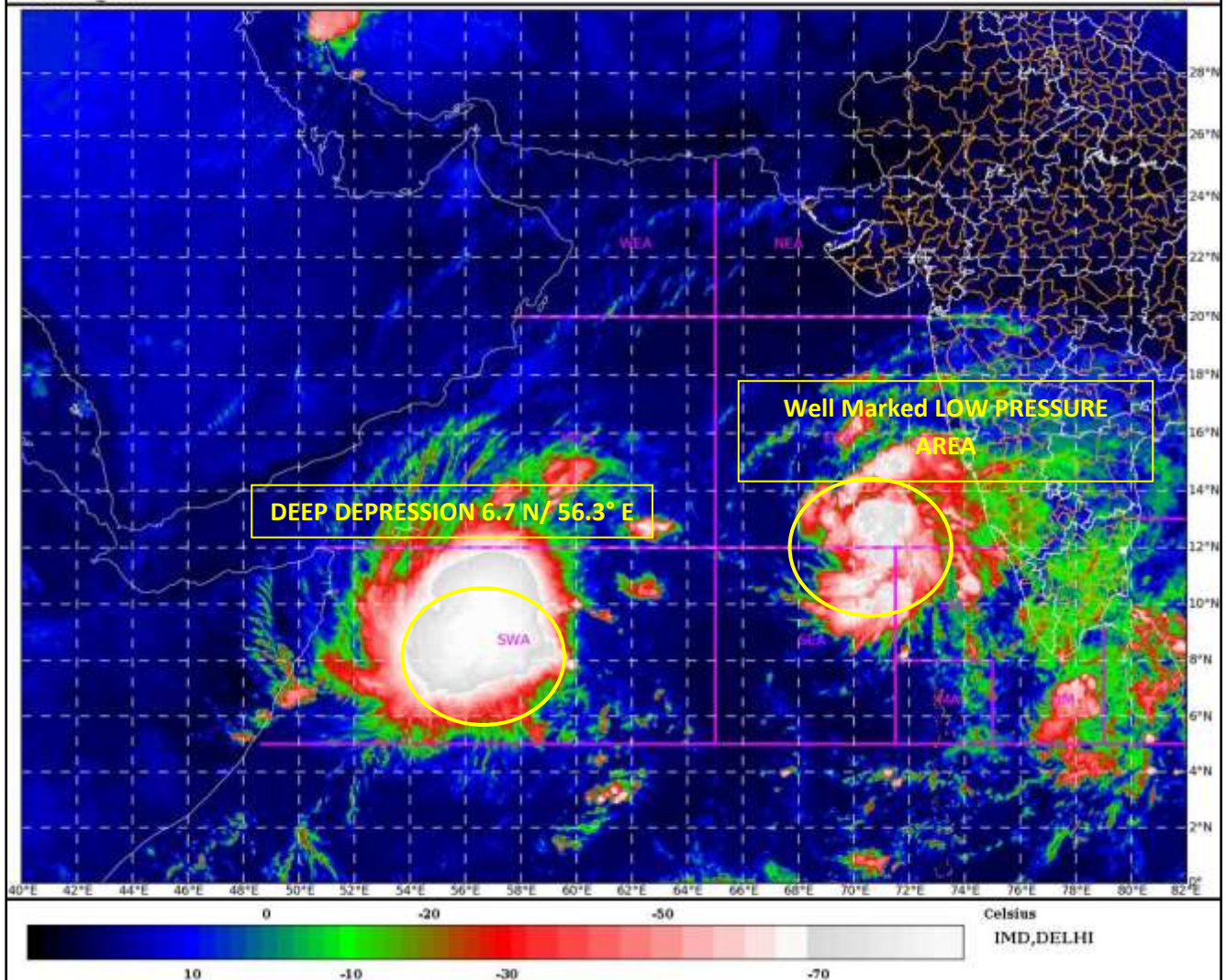
Phone: (91) 11-24652484, FAX: (91) 11-24643128, 24623220, E-mail: cwdhq2008@gmail.com, Website: rsmcnewdelhi.imd.gov.in

Spatial rainfall distribution: Isolated: <25%, A few: 26-50%, Many: 51-75%, Most: 76-100%

Rainfall amount (mm): Heavy rain: 64.5 – 115.5, Very heavy rain: 115.6 – 204.4, Extremely heavy rain: 204.5 or more.

SAT : INSAT-3DR IMG
IMG_TIR1_TEMP 10.8 um
ARABIAN SEA

03-12-2019(0445 to 0512) GMT
03-12-2019(1015 to 1042) IST

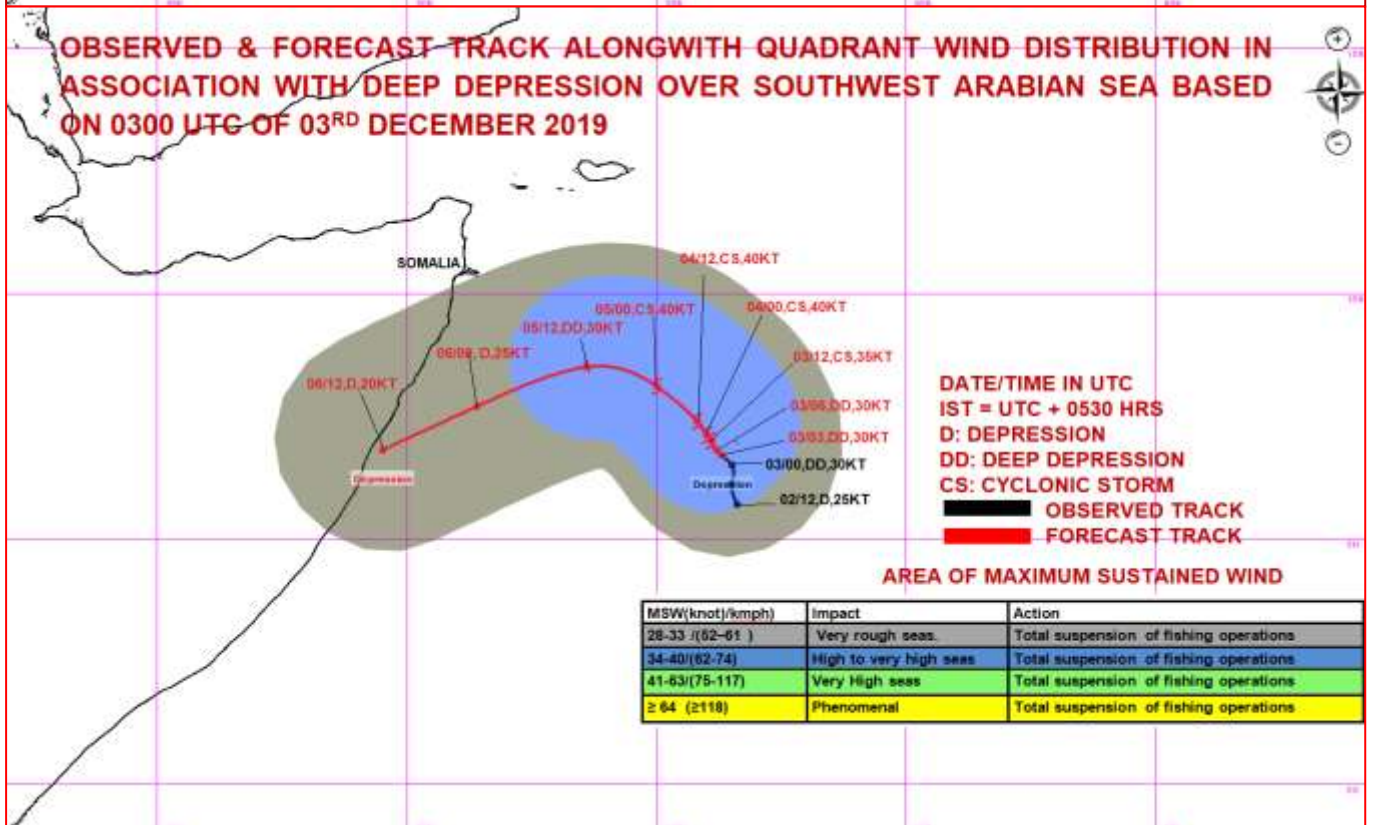
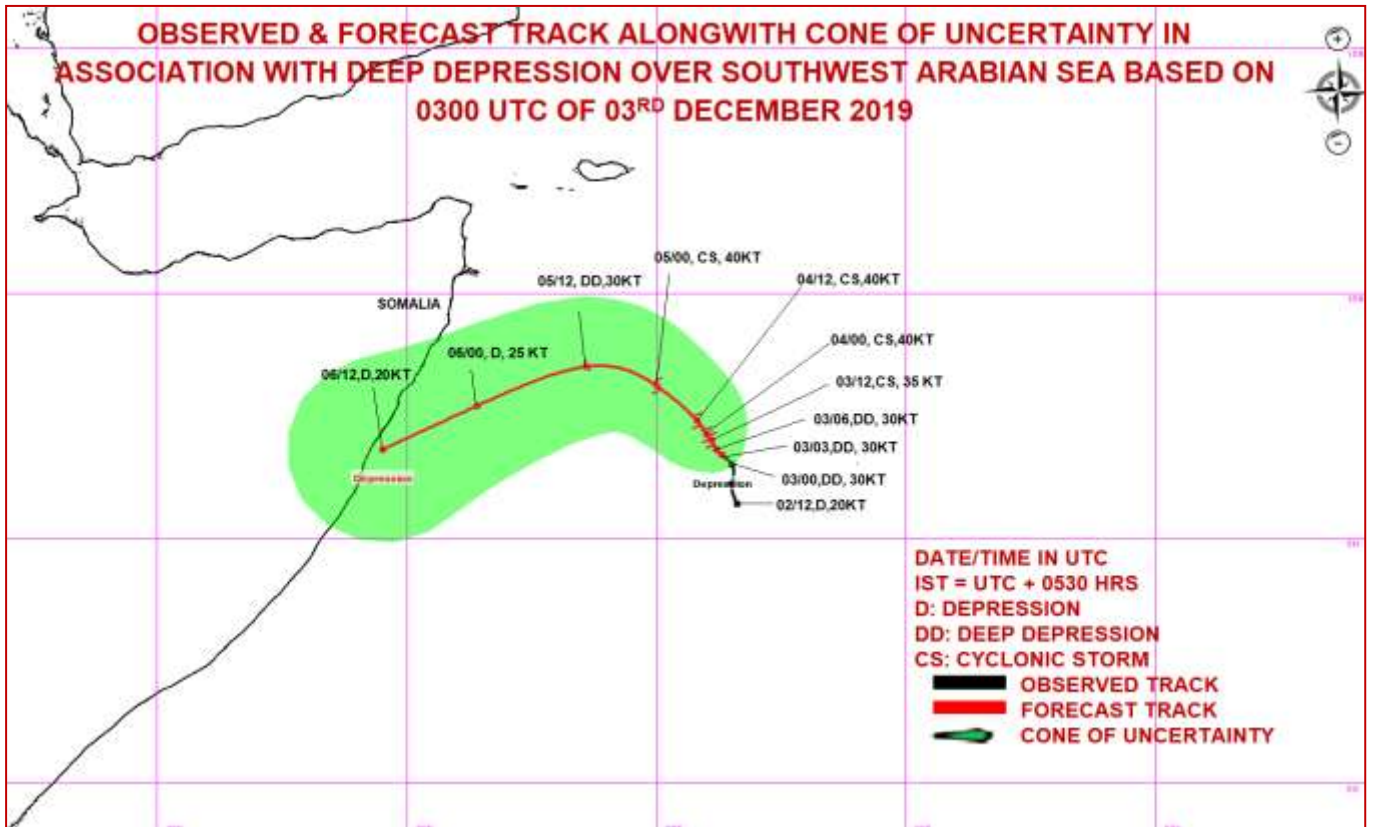


Contact: Cyclone Warning Division, Office of the Director General of Meteorology,
India Meteorological Department, Ministry of Earth Sciences.

Phone: (91) 11-24652484, FAX: (91) 11-24643128, 24623220, E-mail: cwdhq2008@gmail.com, Website: rsmcnewdelhi.imd.gov.in

Spatial rainfall distribution: Isolated: <25%, A few: 26-50%, Many: 51-75%, Most: 76-100%

Rainfall amount (mm): Heavy rain: 64.5 – 115.5, Very heavy rain: 115.6 – 204.4, Extremely heavy rain: 204.5 or more.



Contact: Cyclone Warning Division, Office of the Director General of Meteorology,
India Meteorological Department, Ministry of Earth Sciences.

Phone: (91) 11-24652484, FAX: (91) 11-24643128, 24623220, E-mail: cwdhq2008@gmail.com, Website: rsmcnewdelhi.imd.gov.in

Spatial rainfall distribution: Isolated: <25%, A few: 26-50%, Many: 51-75%, Most: 76-100%

Rainfall amount (mm): Heavy rain: 64.5 – 115.5, Very heavy rain: 115.6 – 204.4, Extremely heavy rain: 204.5 or more.