



Government of India
Ministry of Earth Sciences
Earth System Science Organisation



Earth System Science Organisation
India Meteorological Department

PRESS RELEASE- 2

Time of issue: 1520 hours IST

Dated: 03-12-2019

**Sub: (a) Deep Depression over southwest Arabian Sea
(b) Well Marked Low pressure area over southeast Arabian Sea and adjoining areas of eastcentral Arabian Sea and Lakshadweep region**

(a) Deep Depression over southwest Arabian Sea

The deep depression over southwest Arabian Sea moved north-northwestwards and lay centred at 1130 hrs IST of today, the 03rd December, 2019 near latitude 7.2°N and longitude 56.3°E over the same region, about 660 km south-southeast of Socotra (Yemen) and 900 km east-southeast of Bosaso (Somalia).

It is very likely to intensify into a cyclonic storm during next 12 hours. It is very likely to move north-northwestwards for some more time and then recurve west-southwestwards towards Somalia coast during next 04 days.

Forecast track and intensity are given in the following table:

Date/Time(IST)	Position (Lat. °N/ long. °E)	Maximum sustained surface wind speed (Kmph)	Category of cyclonic disturbance
03.12.19/1130	7.2/56.3	55-65 gusting to 75	Deep Depression
03.12.19/1730	7.4/56.2	60-70 gusting to 80	Cyclonic Storm
03.12.19/2330	7.5/56.1	65-75 gusting to 85	Cyclonic Storm
04.12.19/0530	7.6/56.0	70-80 gusting to 90	Cyclonic Storm
04.12.19/1130	7.7/55.8	70-80 gusting to 90	Cyclonic Storm
05.12.19/2330	7.9/55.3	65-75 gusting to 85	Cyclonic Storm
05.12.19/1130	8.2/54.0	60-70 gusting to 80	Cyclonic Storm
06.12.19/2330	8.0/52.4	60-70 gusting to 80	Cyclonic Storm
06.12.19/1130	7.6/51.0	50-60 gusting to 70	Deep Depression
06.12.19/2330	7.1/49.4	40-50 gusting to 60	Depression

(b) Well Marked Low pressure area over southeast Arabian Sea and adjoining areas of eastcentral Arabian Sea and Lakshadweep region

The Well Marked Low pressure area over Southeast Arabian Sea and adjoining areas of Eastcentral Arabian Sea & Lakshadweep area persists. It is very likely to concentrate into a Depression during next 24 hours.

Warnings:

(i) Rainfall:

- **Lakshadweep:** Light to moderate rainfall at most places with heavy falls at isolated places very likely during next 24 hours and Light to moderate rainfall at many places during subsequent 24 hours.
- **Kerala:** Light to moderate rainfall at many places very likely during next 24 hours.
- **Tamil Nadu, Puducherry & Karaikal:** Light to moderate rainfall at many places very likely over south Tamil Nadu during next 24 hours.

Contact: Cyclone Warning Division, Office of the Director General of Meteorology,
India Meteorological Department, Ministry of Earth Sciences.

Phone: (91) 11-24652484, FAX: (91) 11-24643128, 24623220, E-mail: cwdhq2008@gmail.com, Website: rsmcnewdelhi.imd.gov.in

Spatial rainfall distribution: Isolated: <25%, A few: 26-50%, Many: 51-75%, Most: 76-100%

Rainfall amount (mm): Heavy rain: 64.5 – 115.5, Very heavy rain: 115.6 – 204.4, Extremely heavy rain: 204.5 or more.

- **Coastal & south Interior Karnataka:** Light to moderate rainfall at a few places very likely during next 24 hours.
- **South Maharashtra & Goa:** Light to moderate rainfall at a few places very likely during next 48 hours.

(ii) Wind warning:

- **Southwest Arabian Sea and along & off Somalia Coast:**
 - Squally wind, speed reaching 55-65 kmph gusting to 75 kmph is very likely to prevail over southwest Arabian Sea during next 06 hours.
 - Gale Wind, speed reaching 60-70 gusting 80 kmph is very likely to prevail over southwest Arabian Sea during subsequent 12 hours.
 - It is very likely to further increase becoming Gale wind speed reaching 70-80 kmph gusting to 90 kmph over southwest Arabian Sea and along & off Somalia coast from 04th December morning.
- **Southeast Arabian Sea and adjoining areas of eastcentral Arabian Sea & Lakshadweep area:**
 - Squally wind, speed reaching 40-50 kmph gusting to 60 kmph, likely to prevail over Southeast Arabian Sea and adjoining areas of Eastcentral Arabian Sea & Lakshadweep area, along & off Kerala and Karnataka coasts during next 24 hours.
 - Squally wind speed reaching 45-55 kmph gusting to 65 kmph likely to prevail over Lakshadweep area & adjoining southeast & eastcentral Arabian Sea, along & Karnataka and Maharashtra-Goa coasts on 04th December.
 - Squally weather (wind speed 40-50 kmph gusting to 60 kmph) likely to prevail over eastcentral Arabian Sea on 05th December.

(iii) Sea conditions:

- **Southwest Arabian Sea and along & off Somalia Coast:** Very rough Sea Conditions are prevailing over Southwest Arabian Sea and are very likely to become very rough to High over southwest Arabian Sea and along & off Somalia coast from today evening.
- **Southeast Arabian Sea and adjoining areas of Eastcentral Arabian Sea & Lakshadweep area:** Rough to very rough Sea conditions are very likely to prevail over Lakshadweep area & adjoining southeast & Eastcentral Arabian Sea, along & off Kerala-Karnataka-Maharashtra coasts during next 24 hours and continue to remain rough to very rough over Eastcentral Arabian Sea and along & off Karnataka–Maharashtra-Goa coasts on 04th December.

(iv) Fishermen Warning:

- **Southwest Arabian Sea and along & off Somalia Coast:** The fishermen are advised not to venture into southwest Arabian Sea and along & off Somalia coast during next 04 days.
- **Southeast Arabian Sea and adjoining areas of Eastcentral Arabian Sea & Lakshadweep area:** The fishermen are also advised not to venture into Southeast Arabian Sea and adjoining areas of Eastcentral Arabian Sea & Lakshadweep area, along & off Kerala and Karnataka coasts during next 24 hours and over southeast & adjoining east central Arabian Sea and along & off Karnataka-Maharashtra –Goa coasts on 3rd & 4th December 2019.

Both the systems are under continuous surveillance and concerned state governments are being informed regularly.

Kindly visit www.imd.gov.in, www.rsmcnewdelhi.imd.gov.in and www.mausam.imd.gov.in for updates on the system.

Contact: Cyclone Warning Division, Office of the Director General of Meteorology,
India Meteorological Department, Ministry of Earth Sciences.

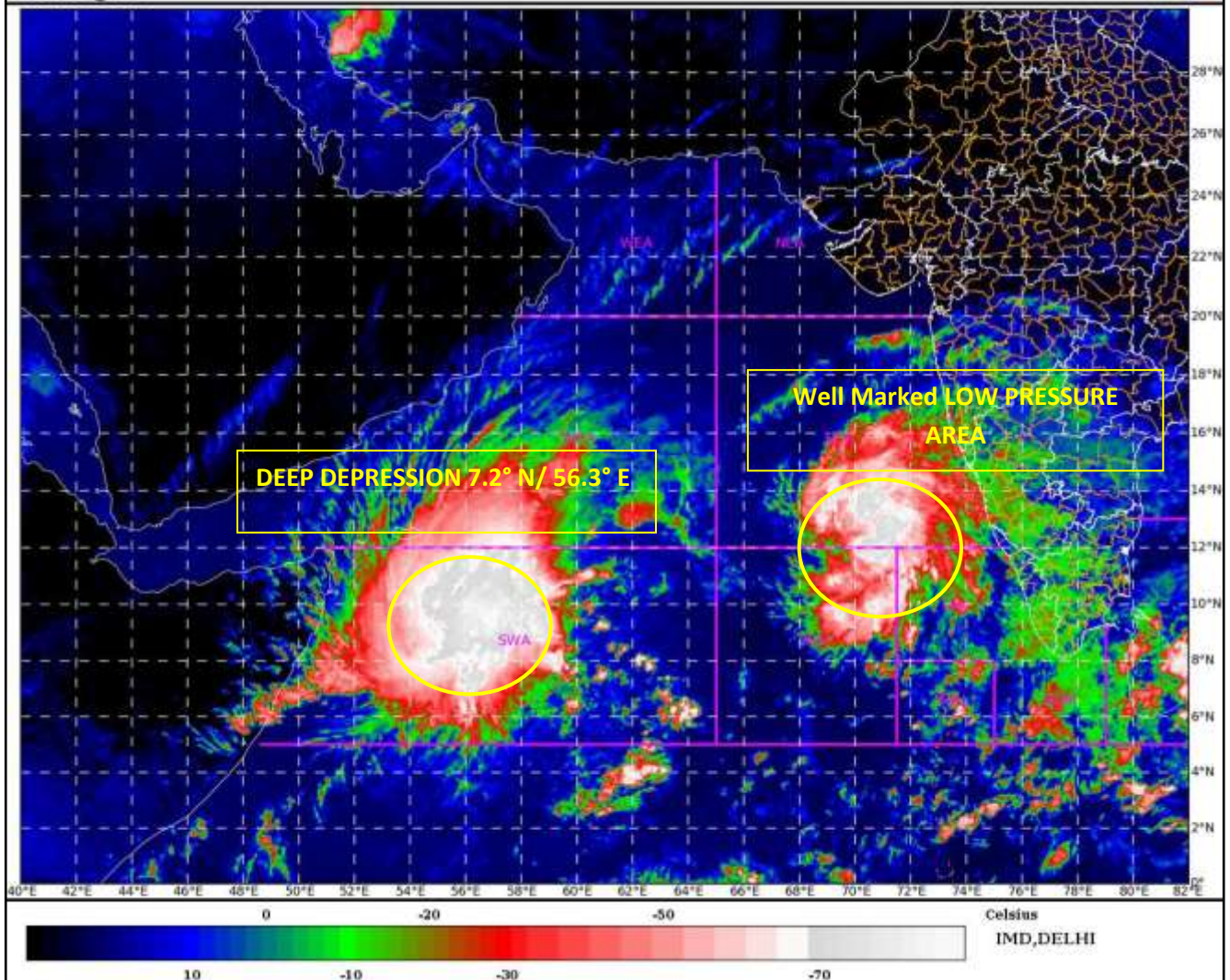
Phone: (91) 11-24652484, FAX: (91) 11-24643128, 24623220, E-mail: cwdhq2008@gmail.com, Website: rsmcnewdelhi.imd.gov.in

Spatial rainfall distribution: Isolated: <25%, A few: 26-50%, Many: 51-75%, Most: 76-100%

Rainfall amount (mm): Heavy rain: 64.5 – 115.5, Very heavy rain: 115.6 – 204.4, Extremely heavy rain: 204.5 or more.

SAT : INSAT-3D IMG
IMG_TIR1_TEMP 10.8 um
ARABIAN_SEA

03-12-2019(0800 to 0827) GMT
03-12-2019(1330 to 1357) IST



SWA: SOUTHWEST ARABIAN SEA

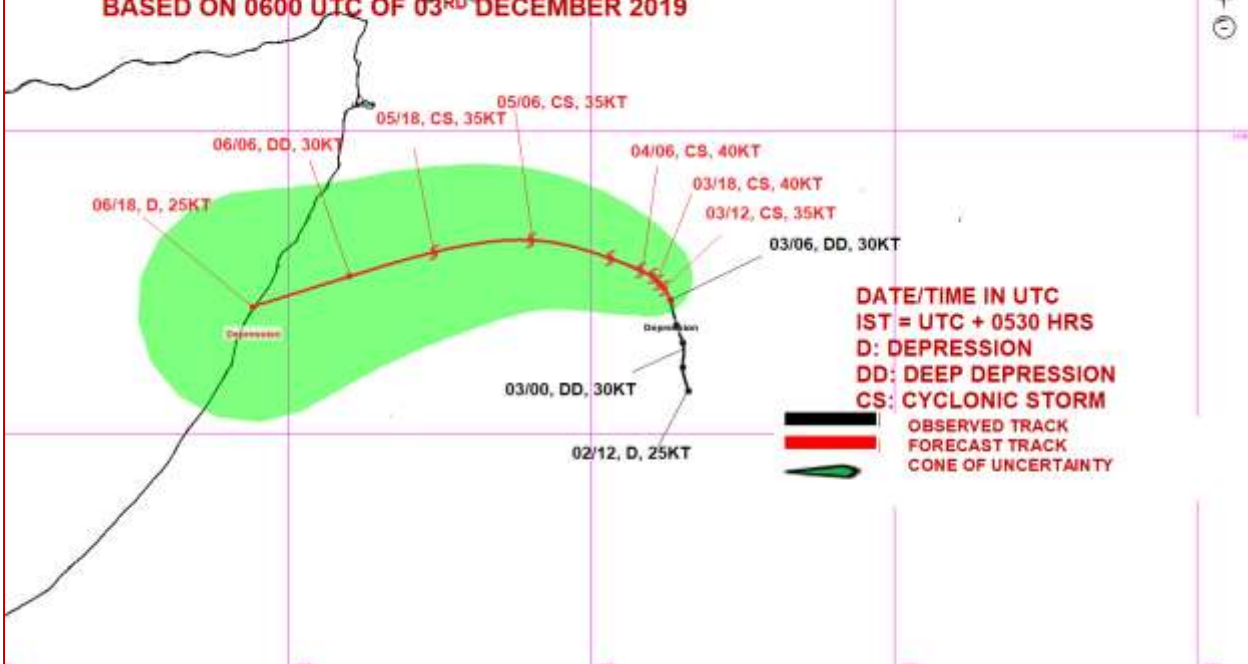
Contact: Cyclone Warning Division, Office of the Director General of Meteorology,
India Meteorological Department, Ministry of Earth Sciences.

Phone: (91) 11-24652484, FAX: (91) 11-24643128, 24623220, E-mail: cwdhq2008@gmail.com, Website: rsmcnewdelhi.imd.gov.in

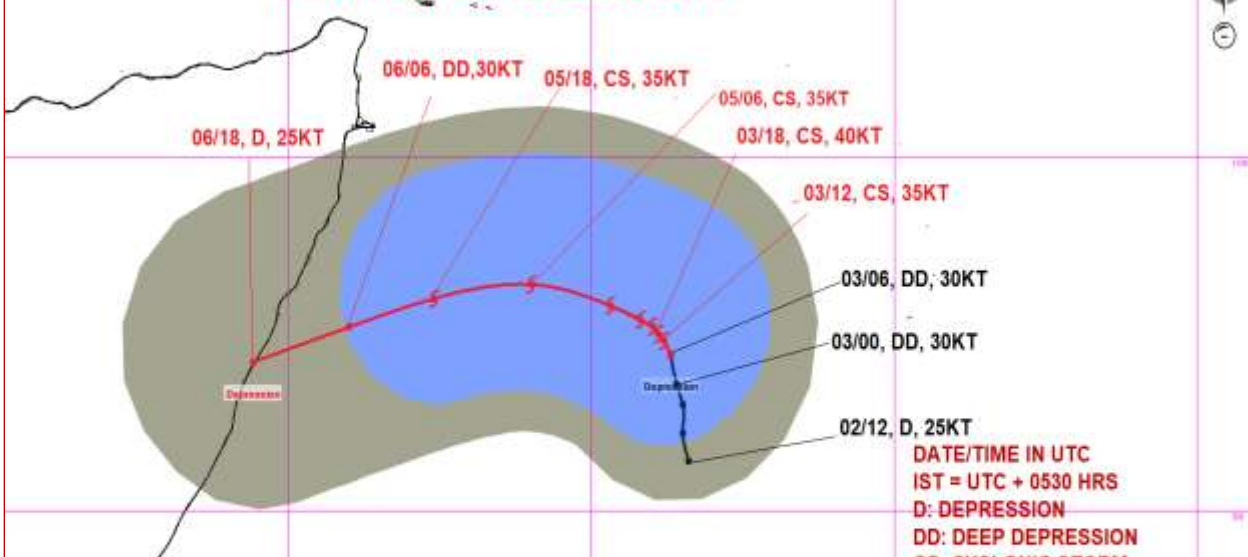
Spatial rainfall distribution: Isolated: <25%, A few: 26-50%, Many: 51-75%, Most: 76-100%

Rainfall amount (mm): Heavy rain: 64.5 – 115.5, Very heavy rain: 115.6 – 204.4, Extremely heavy rain: 204.5 or more.

**OBSERVED & FORECAST TRACK ALONGWITH CONE OF UNCERTAINTY
IN ASSOCIATION WITH DEEP DEPRESSION OVER SOUTHWEST ARABIAN SEA
BASED ON 0600 UTC OF 03RD DECEMBER 2019**



**OBSERVED & FORECAST TRACK ALONGWITH QUADRANT WIND DISTRIBUTION
IN ASSOCIATION WITH DEEP DEPRESSION OVER SOUTHWEST ARABIAN SEA BASED ON
0600 UTC OF 03RD DECEMBER 2019**



AREA OF MAXIMUM SUSTAINED WIND:

MSW(knot/kmph)	Impact	Action
28-33 (52-61)	Very rough seas.	Total suspension of fishing operations
34-40 (62-74)	High to very high seas	Total suspension of fishing operations
41-53 (75-117)	Very High seas	Total suspension of fishing operations
≥ 64 (≥118)	Phenomenal	Total suspension of fishing operations

Contact: Cyclone Warning Division, Office of the Director General of Meteorology,
India Meteorological Department, Ministry of Earth Sciences.

Phone: (91) 11-24652484, FAX: (91) 11-24643128, 24623220, E-mail: cwdhq2008@gmail.com, Website: rsmcnewdelhi.imd.gov.in

Spatial rainfall distribution: Isolated: <25%, A few: 26-50%, Many: 51-75%, Most: 76-100%

Rainfall amount (mm): Heavy rain: 64.5 – 115.5, Very heavy rain: 115.6 – 204.4, Extremely heavy rain: 204.5 or more.