



Government of India  
Ministry of Earth Sciences



India Meteorological Department

## PRESS RELEASE - 4

Time of issue: 1130 hours IST

Dated: 03-06-2020

**Sub: Severe Cyclonic Storm 'NISARGA' over Eastcentral Arabian Sea to cross Maharashtra coast close to south of Alibag today afternoon: Cyclone Warning for north Maharashtra & adjoining south Gujarat coasts: Red message**

Yesterday's cyclonic storm "NISARGA" over eastcentral Arabian Sea moved nearly northwards till evening (1730 hrs IST of 2<sup>nd</sup> June). Thereafter, it gradually recurved northeastwards and intensified into a severe cyclonic storm in the early morning (0530 hrs IST) of today, the 3<sup>rd</sup> June 2020. Further moving northeastwards, it lay centred in the morning (0830 hours IST) of today the 03<sup>rd</sup> June, 2020 over eastcentral Arabian Sea near latitude 17.6°N and longitude 72.3°E, about 130 km south-southwest of Alibagh (Maharashtra), 170 km south-southwest of Mumbai (Maharashtra) and 400 km south-southwest of Surat (Gujarat).

**It is very likely to move north-northeastwards and cross north Maharashtra coast close to south of Alibagh (Raigad District, Maharashtra) during the afternoon (1300-1600 hrs IST) of today the 03<sup>rd</sup> June as a Severe Cyclonic Storm with maximum sustained wind speed of 100-110 kmph gusting to 120 kmph.**

The system is being continuously tracked by the Doppler Weather Radars (DWRs) at Mumbai (Maharashtra) and Goa.

Forecast track and intensity are given in the following table:

Date/Time(IST)	Position (Lat. °N/ long. °E)	Maximum sustained surface wind speed (Kmph)	Category of cyclonic disturbance
03.06.20/0830	17.6/72.3	100-110 gusting to 120	Severe Cyclonic Storm
03.06.20/1130	18.1/72.7	100-110 gusting to 120	Severe Cyclonic Storm
03.06.20/1730	18.7/73.3	80-90 gusting to 100	Cyclonic Storm
03.06.20/2330	19.4/73.9	50-60 gusting to 70	Deep Depression
04.06.20/0530	20.2/74.6	40-50 gusting to 60	Depression

### Warnings:

#### (i) Rainfall:

- Light to moderate rainfall at most places with heavy to very heavy falls at a few places and **extremely heavy falls (  $\geq 20$  cm in 24 hours )** at isolated places very likely over north Konkan (Mumbai, Palghar, Thane, Raigad districts) and north Madhya Maharashtra during next 24 hours.
- Light to moderate rainfall at most places with heavy to very heavy falls at isolated places over south Konkan ( Ratnagiri & Sindhudurg districts) & Goa and south Gujarat region

Contact: Cyclone Warning Division, Office of the Director General of Meteorology,  
India Meteorological Department, Ministry of Earth Sciences.

Phone: (91) 11-24652484, FAX: (91) 11-24643128, 24623220, E-mail: cwdhq2008@gmail.com, Website: [rsmcnwdelhi.imd.gov.in](http://rsmcnwdelhi.imd.gov.in)

Spatial rainfall distribution: Isolated: <25%, A few: 26-50%, Many: 51-75%, Most: 76-100%

Rainfall amount (mm): Heavy rain: 64.5 – 115.5, Very heavy rain: 115.6 – 204.4, Extremely heavy rain: 204.5 or more.

(Valsad, Navsari, Dang, Daman, Dadra & Nagar Haveli and Surat districts) during next 24 hours.

- Light to moderate rainfall at most places with heavy falls at isolated places over west Madhya Pradesh and Vidarbha during next 24 hours.

**(ii) Wind warning**

- Gale wind, speed reaching 100-110 kmph gusting to 120 kmph, is prevailing over **eastcentral Arabian Sea**. From the noon of today, the 3<sup>rd</sup> June, it will become gale wind, speed reaching 100-110 kmph gusting to 120 kmph over eastcentral Arabian Sea along & off north Maharashtra coast (**Raigad, Mumbai and adjoining Thane**), 85-95 kmph gusting to 105 kmph along & off **Ratnagiri, Sindhudurg, Palghar and remaining areas of Thane**. Gale wind, speed reaching 60-80 kmph gusting to 90 kmph, likely along & off **Valsad, Navsari districts of Gujarat, Daman, Dadra & Nagar Haveli and along & off northeast Arabian Sea** and 60-70 kmph gusting to 80 kmph along & off **Surat & Bharuch districts of south Gujarat** from today the 03<sup>rd</sup> June noon.
- Squally wind, speed reaching 50-60 kmph gusting to 70 kmph is likely to prevail over **northeast Arabian Sea along & off remaining districts of south Gujarat coast** on 03<sup>rd</sup> June.
- Squally wind, speed reaching 50-60 kmph gusting to 70 kmph is likely prevail over **eastcentral Arabian Sea along and off Karnataka-Goa coasts** during next 12 hours.

**(iii) Sea condition**

- The sea condition will be high to very high over eastcentral Arabian Sea and along & off Maharashtra & Goa coasts till today, the 3<sup>rd</sup> June evening.
- The sea condition is very likely to be very rough to high over northeast Arabian Sea along & off south Gujarat coast till today, the 3<sup>rd</sup> June evening

**(iv) Storm Surge Warning:**

Storm surge of about 1-2 meters height above astronomical tide is very likely to inundate low lying areas of Mumbai, Thane and Raigad districts and 0.5-1.0 meter height above the astronomical tide likely to inundate low lying areas of Ratnagiri district during the time of landfall.

**(v) Fishermen Warning**

Fishermen are advised not to venture into Eastcentral and Northeast Arabian Sea and along & off Karnataka-Goa-Maharashtra-south Gujarat coasts during next 24 hours.

**(vi) Damage Expected:**

- Major damage to thatched houses/ huts. Roof tops may blow off. Unattached metal sheets may fly.
- Damage to power and communication lines.
- Major damage to Kutcha and some damage to Pucca roads. Flooding of escape routes.

---

Contact: Cyclone Warning Division, Office of the Director General of Meteorology,  
India Meteorological Department, Ministry of Earth Sciences.

Phone: (91) 11-24652484, FAX: (91) 11-24643128, 24623220, E-mail: [cwdhq2008@gmail.com](mailto:cwdhq2008@gmail.com), Website: [rsmcnnewdelhi.imd.gov.in](http://rsmcnnewdelhi.imd.gov.in)

Spatial rainfall distribution: Isolated: <25%, A few: 26-50%, Many: 51-75%, Most: 76-100%

Rainfall amount (mm): Heavy rain: 64.5 – 115.5, Very heavy rain: 115.6 – 204.4, Extremely heavy rain: 204.5 or more.

- Breaking of tree branches, uprooting of large avenue trees. Damage to banana and papaya trees. Large dead limbs blown from trees.
- Major damage to coastal crops.
- Damage to embankments/ salt pans.

**(vii) Fishermen Warning & Action Suggested:**

- Total suspension of fishing operations.
- Mobilise evacuation from low lying areas.
- Judicious regulation of rail and road traffic.
- People in affected areas to remain indoors.
- Movement in motor boats and small ships unsafe.

**Post Landfall Outlook:**

After the landfall the severe cyclonic storm is very likely to maintain its cyclonic storm intensity for about 06 hours, while moving north-northeastwards across north Madhya Maharashtra. Under its influence gale wind reaching 60-70 kmph gusting to 80 kmph very likely to prevail over Pune, Ahmadnagar and 55-65 kmph gusting to 75 kmph adjoining Beed, Nashik & Aurangabad districts of Maharashtra. Light to moderate rainfall at most places with heavy to very heavy falls at isolated places are also very likely over these districts on 3<sup>rd</sup> June, 2020.

**Damage Expected and Action suggested for interior districts of Maharashtra (Pune, Ahmadnagar, Nashik, Aurangabad and adjoining Beed).**

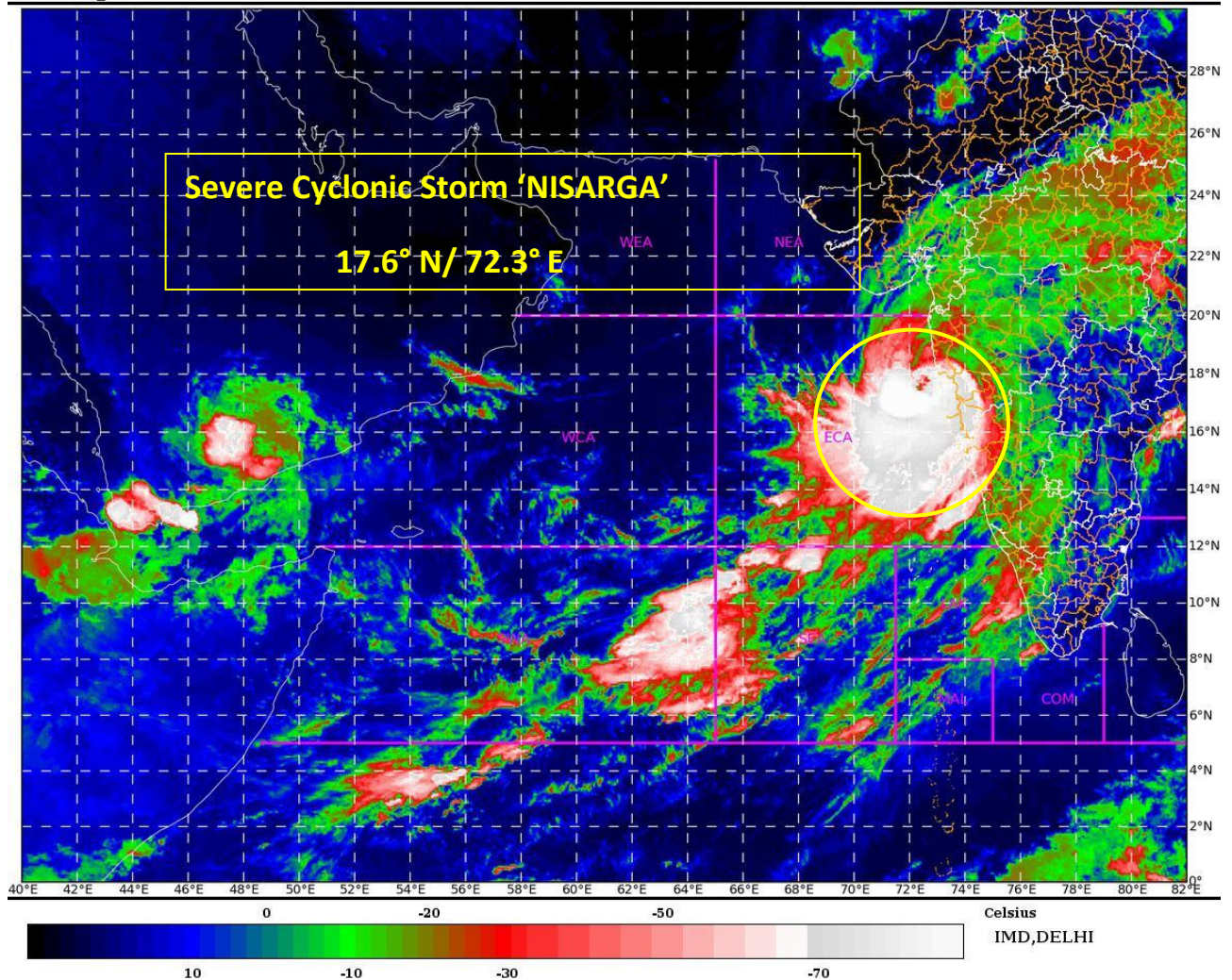
(i) Minor damage to power and communication lines. (ii) Damage to Kutchha and some damage to Pucca roads. (iii) Breaking of tree branches, uprooting of small trees. (iv) Damage to banana and papaya trees. (v) People in affected areas to remain indoors.

The system is under continuous surveillance and the concerned state governments are being informed regularly.

Kindly visit [www.rsmcnewdelhi.imd.gov.in](http://www.rsmcnewdelhi.imd.gov.in) and [www.mausam.imd.gov.in](http://www.mausam.imd.gov.in) for updates on the system.

SAT : INSAT-3D IMG  
IMG\_TIR1\_TEMP 10.8 um  
ARABIAN\_SEA

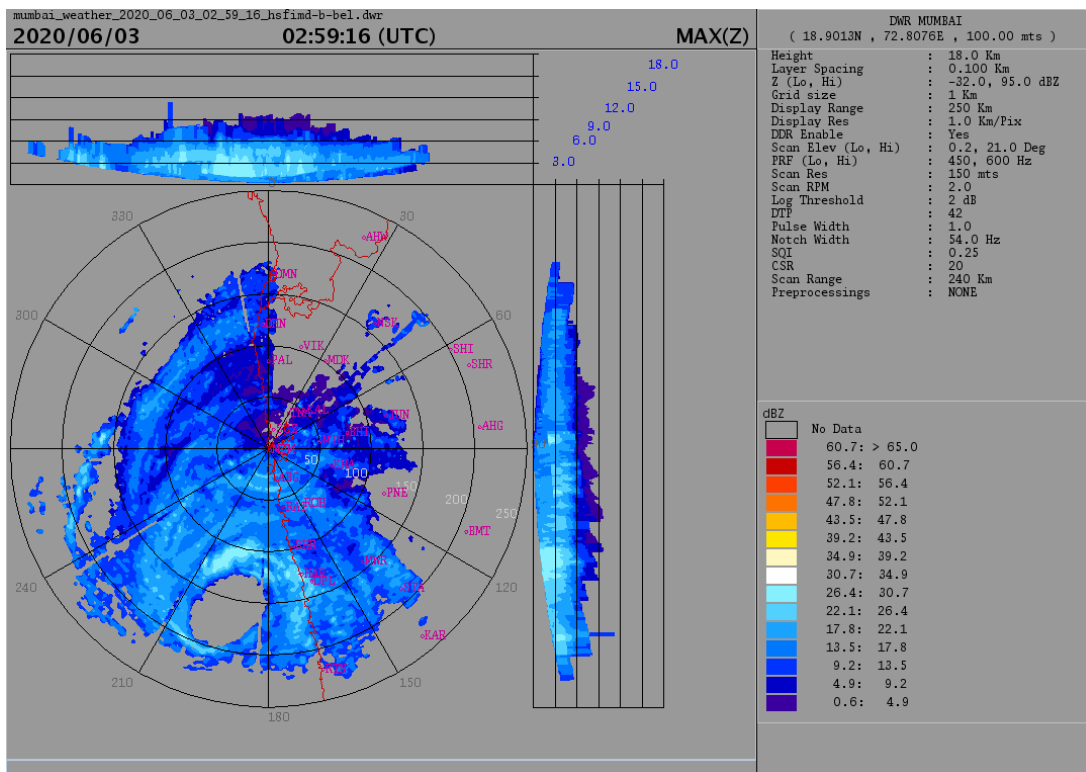
03-06-2020/(0300 to 0327) GMT  
03-06-2020/(0830 to 0857) IST



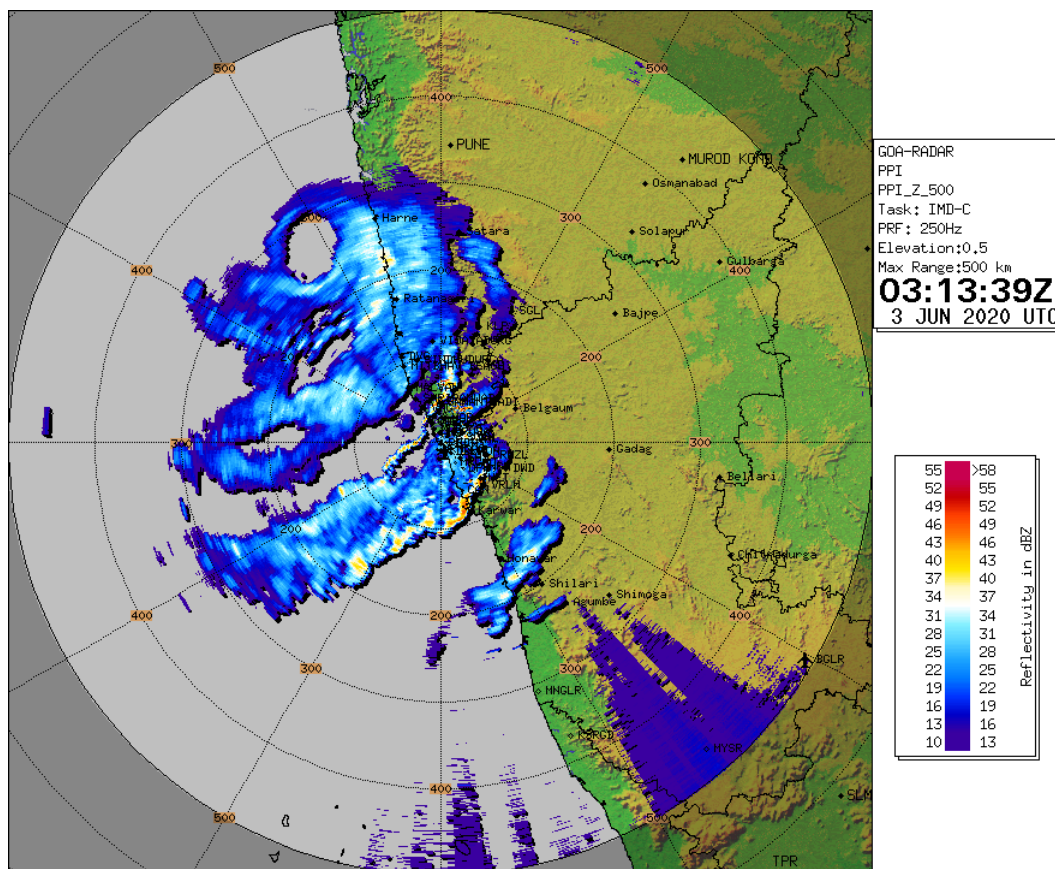
Legend: ECA- east-Central Arabian Sea

Contact: Cyclone Warning Division, Office of the Director General of Meteorology,  
India Meteorological Department, Ministry of Earth Sciences.  
Phone: (91) 11-24652484, FAX: (91) 11-24643128, 24623220, E-mail: cwdhq2008@gmail.com, Website: [rsmcnewdelhi.imd.gov.in](http://rsmcnewdelhi.imd.gov.in)  
Spatial rainfall distribution: Isolated: <25%, A few: 26-50%, Many: 51-75%, Most: 76-100%  
Rainfall amount (mm): Heavy rain: 64.5 – 115.5, Very heavy rain: 115.6 – 204.4, Extremely heavy rain: 204.5 or more.





**DOPPLER WEATHER RADAR MUMBAI AT 08:29 HOURS IST OF 03.06.2020**



**DOPPLER WEATHER RADAR GOA AT 08:43 HOURS IST OF 03.06.2020**

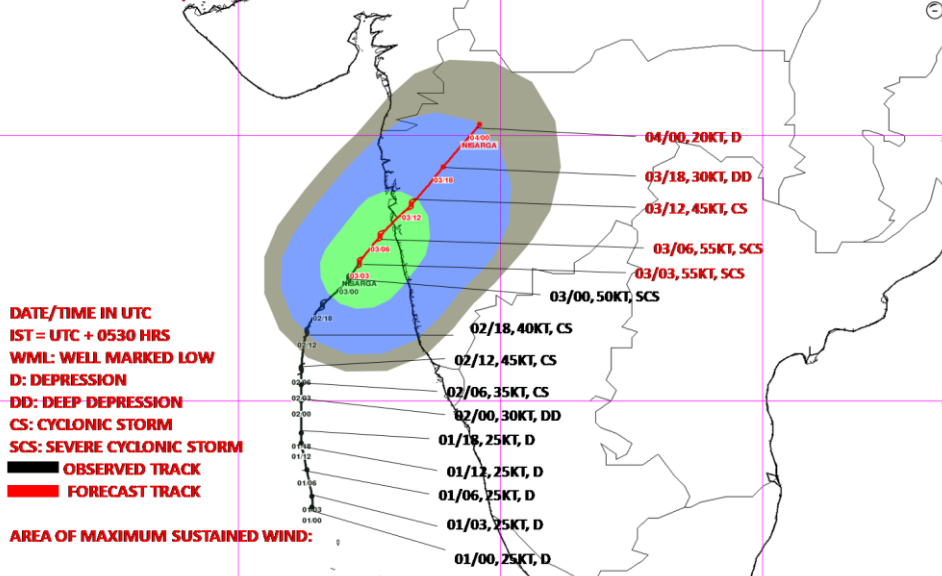
Contact: Cyclone Warning Division, Office of the Director General of Meteorology,  
 India Meteorological Department, Ministry of Earth Sciences.

Phone: (91) 11-24652484, FAX: (91) 11-24643128, 24623220, E-mail: cwdhq2008@gmail.com, Website: [rsmcnwdelhi.imd.gov.in](http://rsmcnwdelhi.imd.gov.in)

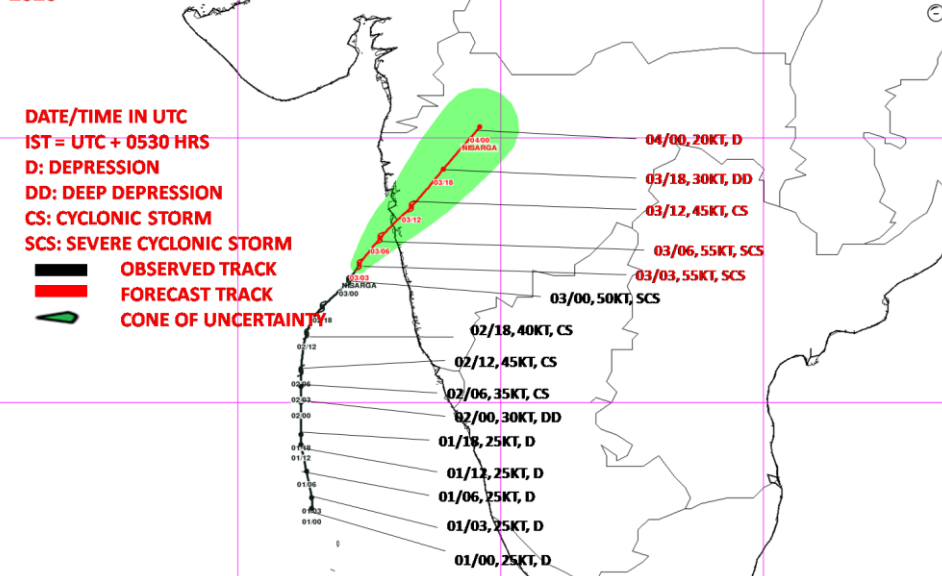
Spatial rainfall distribution: Isolated: <25%, A few: 26-50%, Many: 51-75%, Most: 76-100%

Rainfall amount (mm): Heavy rain: 64.5 – 115.5, Very heavy rain: 115.6 – 204.4, Extremely heavy rain: 204.5 or more.

**OBSERVED & FORECAST TRACK ALONG WITH QUADRANT WIND DISTRIBUTION OF SEVERE CYCLONIC STORM NISARGA OVER EASTCENTRAL ARABIAN SEA BASED ON 0300 UTC OF 03<sup>rd</sup> JUNE, 2020**



**OBSERVED & FORECAST TRACK ALONG WITH CONE OF UNCERTAINTY OF SEVERE CYCLONIC STORM NISARGA OVER EASTCENTRAL ARABIAN SEA BASED ON 0300 UTC OF 03<sup>rd</sup> JUNE, 2020**



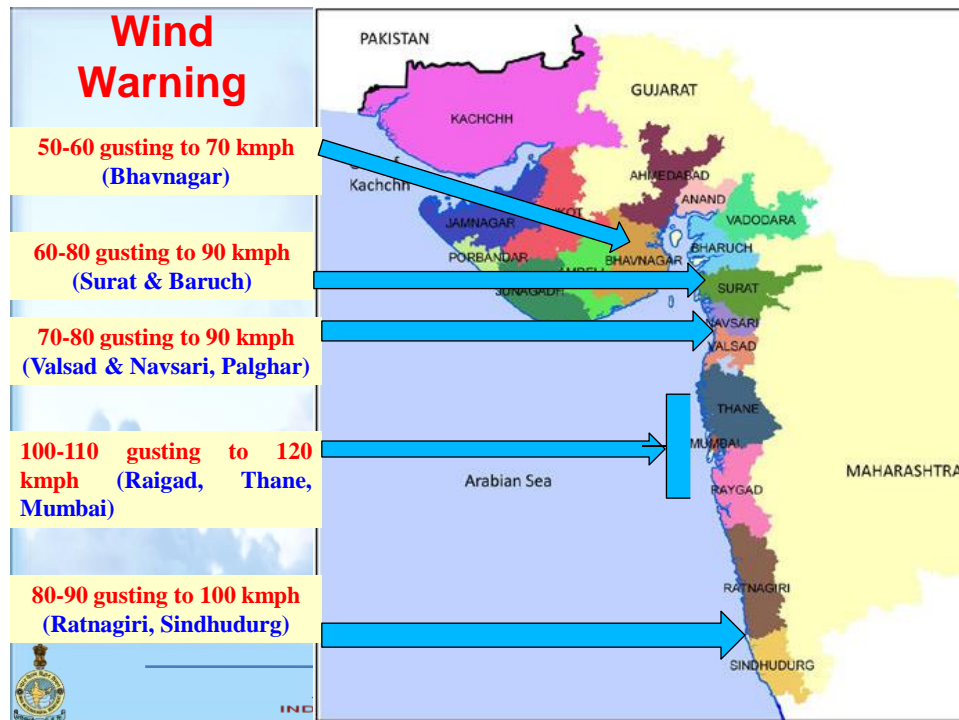
Contact: Cyclone Warning Division, Office of the Director General of Meteorology,  
 India Meteorological Department, Ministry of Earth Sciences.

Phone: (91) 11-24652484, FAX: (91) 11-24643128, 24623220, E-mail: cwdhq2008@gmail.com, Website: [rsmcnewdelhi.imd.gov.in](http://rsmcnewdelhi.imd.gov.in)

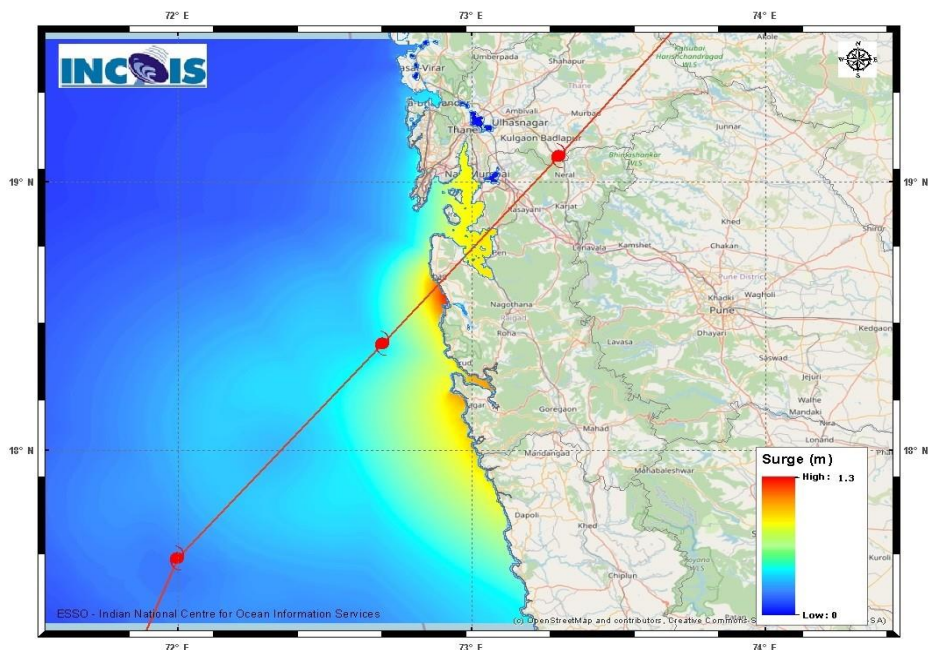
Spatial rainfall distribution: Isolated: <25%, A few: 26-50%, Many: 51-75%, Most: 76-100%

Rainfall amount (mm): Heavy rain: 64.5 – 115.5, Very heavy rain: 115.6 – 204.4, Extremely heavy rain: 204.5 or more.

## District Level Wind Warning



## Storm surge Warning



**The below listed surge heights over and above astronomical tide.**

MANDAL/TALUK	DISTRICT	STATE / UNION TERRITORY	NEAREST PLACE OF HABITATION	* STORM SURGE (m)	* EXPECTED INUNDATION EXTENT (km)
ALIBAG	RAIGAD	MAHARASHTRA	ALIBAG	0.5-1.3	Around 1.4
DAPOLI	RATNAGIRI	MAHARASHTRA	DAPOLI	0.6-0.9	Around 0.3
PEN	RAIGAD	MAHARASHTRA	PEN	0.7-0.9	Around 2.2
THANE	GREATER BOMBAY	MAHARASHTRA	THANE	0.7-0.9	Around 0.3

**Contact:** Cyclone Warning Division, Office of the Director General of Meteorology,  
India Meteorological Department, Ministry of Earth Sciences.

**Phone:** (91) 11-24652484, **FAX:** (91) 11-24643128, 24623220, **E-mail:** cwdhq2008@gmail.com, **Website:** [rsmcnwdelhi.imd.gov.in](http://rsmcnwdelhi.imd.gov.in)

**Spatial rainfall distribution:** Isolated: <25%, A few: 26-50%, Many: 51-75%, Most: 76-100%

**Rainfall amount (mm):** Heavy rain: 64.5 – 115.5, Very heavy rain: 115.6 – 204.4, Extremely heavy rain: 204.5 or more.