



Government of India
Ministry of Earth Sciences
Earth System Science Organisation



Earth System Science Organisation
India Meteorological Department

PRESS RELEASE- 14

Time of issue: 1400 hours IST

Dated: 06-11-2019

**Sub:(A) Very Severe Cyclonic Storm “MAHA” weakened into a severe cyclonic storm and
(B) Depression over Bay of Bengal intensified into a deep depression**

(A) Very Severe Cyclonic Storm “MAHA” weakened into a severe cyclonic storm

Yesterday's very severe cyclonic storm over westcentral and adjoining eastcentral Arabian Sea moved nearly eastwards and weakened into a severe cyclonic storm over the eastcentral and adjoining northeast Arabian Sea in the early morning (0530 hours IST) and lay centered at 0830 hours IST of today, the 6th November, 2019 over the same region near latitude 19.8°N and longitude 66.3°E, about 400 km west-southwest of Porbandar (Gujarat), 440 km west-southwest of Veraval (Gujarat) and 490 km west-southwest of Diu.

It is very likely to move nearly eastwards, weaken into a Cyclonic Storm by today, the 6th November evening. Thereafter, it is likely to move east-northeastwards, weaken further into a Deep Depression by early morning of tomorrow, the 7th November over northeast and adjoining eastcentral Arabian Sea. It is very likely to skirt Saurashtra coast and lie centered about 40 kilometers south of Diu around noon of 7th November as a deep depression. Continuing to move east-northeastwards, it would further weaken into a depression by tomorrow evening.

Forecast track and intensity are given in the following table:

Date/Time(IST)	Position (Lat. °N/ Long. °E)	Maximum sustained surface wind speed (Kmph)	Category of cyclonic disturbance
06.11.19/0830	19.8/66.3	100-110 gusting to 125	Severe Cyclonic Storm
06.11.19/1130	19.7/67.0	90-100 gusting to 110	Severe Cyclonic Storm
06.11.19/1730	19.7/68.2	80-90 gusting to 100	Cyclonic Storm
06.11.19/2330	19.9/69.3	70-80 gusting to 90	Cyclonic Storm
07.11.19/0530	20.1/69.7	60-70 gusting to 80	Cyclonic Storm
07.11.19/1730	20.3/71.6	50-60 gusting to 70	Deep Depression
08.11.19/0530	20.6/72.6	40-50 gusting to 60	Depression

Warnings:

(i) Rainfall:

- **Gujarat:** Light to moderate rainfall at many places with heavy to very heavy falls at isolated places very likely over Saurashtra and Gujarat region (**Junagarh, Gir Somnath, Amreli, Bhavnagar, Surat, Bharuch, Anand, Ahmedabad, Botad, Porbandar, and Rajkot**) on today, the 6th November & isolated heavy to very heavy falls over **Bhavnagar, Surat, Bharuch, Anand, and Vadodara** and heavy rainfall at isolated places over **Botad and Ahmedabad** on 7th November, 2019.

Contact: Cyclone Warning Division, Office of the Director General of Meteorology,
India Meteorological Department, Ministry of Earth Sciences.

Phone: (91) 11-24652484, FAX: (91) 11-24643128, 24623220, E-mail: cwdhq2008@gmail.com, Website: rsmcnewdelhi.imd.gov.in

Spatial rainfall distribution: Isolated: <25%, A few: 26-50%, Many: 51-75%, Most: 76-100%

Rainfall amount (mm): Heavy rain: 64.5 – 115.5, Very heavy rain: 115.6 – 204.4, Extremely heavy rain: 204.5 or more.

- **Maharashtra:** Light to moderate rainfall at most places with isolated heavy falls very likely over Madhya Maharashtra and north Konkan (Palghar & Thane districts) on today, the 6th November & northern most districts of Madhya Maharashtra on 7th November, 2019.

(ii) Wind warning

- **Gujarat : Daman, Diu, Dadra & Nagar Haveli:** Squally wind speed reaching 40-50 kmph gusting to 60 kmph likely to commence over northeast Arabian Sea along & off Gujarat coast from today, the 6th November afternoon. It is very likely to increase gradually becoming 55-65 Kmph gusting to 75 Kmph along & off **Junagarh, Gir Somnath, Diu, Amreli Bhavnagar, Bharuch, Anand, Ahmedabad, and Botad** districts, 40-50 kmph gusting to 60 kmph over districts **Porbandar, Rajkot, Navsari, Valsad, Daman and Dadra & Nagar Haveli** from 7th November morning for the subsequent 12 hours.
- **Maharashtra:** Squally wind speed reaching 40-50 kmph gusting to 60 kmph likely along & off Maharashtra coast from today, the 6th evening. It is very likely to increase becoming 50-60 Kmph gusting to 70 Kmph from 7th November morning for the next 12 hours along & off Palghar & Thane districts.
- **Arabian Sea:** Gale wind speed reaching 100-110 kmph gusting to 125 kmph is prevailing over eastcentral and adjoining northeast Arabian Sea around the system centre. It is very likely to decrease gradually and become 55-65 kmph gusting 75 kmph on 7th November morning over northeast and adjoining eastcentral Arabian Sea and further decrease thereafter.

(iii) Sea condition

- **Gujarat Coast:** Sea condition will be rough to very rough along & off Gujarat coast from 6th November afternoon for subsequent 24 hours.
- **Maharashtra Coast:** Sea condition will be rough to very rough along & off north Maharashtra coast from 06th November evening for the subsequent 24 hours.
- **Arabian Sea:** Sea condition will be phenomenal over eastcentral and adjoining northeast Arabian Sea during next 12 hours and will be high thereafter for subsequent 12 hours. It will be very rough to very rough over westcentral and adjoining northwest Arabian Sea during next 6 hours.

(iv) Storm Surge

- Storm surge of about 0.5 meter above Astronomical tide is likely to inundate low lying areas of **Bhavnagar, Junagarh, Gir Somnath, Amreli, Surat, Bharuch, Anand and Ahmedabad** Districts from morning to forenoon of 7th November.

(v) Fishermen Warning

- The fishermen are advised not to venture into westcentral and adjoining northwest Arabian Sea during next 12 hours and over eastcentral & adjoining northeast Arabian Sea till 08th November morning.
- The fishermen are advised not to venture into Sea along & off Gujarat coast and adjoining north Maharashtra coast till 8th November morning.

(vi) Damage Expected over coastal districts of Gujarat (Junagarh, Gir Somnath, Amreli, Bhavnagar, Surat, Bharuch, Anand, Ahmedabad, Botad, Porbandar) and Daman, Diu:

- Minor damage to loose / unsecured structures.
- Some breaches in Kutcha road.
- Minor damage to Banana trees and near coastal agriculture due to salt spray. Damage to ripe paddy crops.
- Minor damage to Kutcha embankments.

Contact: Cyclone Warning Division, Office of the Director General of Meteorology,
India Meteorological Department, Ministry of Earth Sciences.

Phone: (91) 11-24652484, FAX: (91) 11-24643128, 24623220, E-mail: cwdhq2008@gmail.com, Website: rsmcnewdelhi.imd.gov.in

Spatial rainfall distribution: Isolated: <25%, A few: 26-50%, Many: 51-75%, Most: 76-100%

Rainfall amount (mm): Heavy rain: 64.5 – 115.5, Very heavy rain: 115.6 – 204.4, Extremely heavy rain: 204.5 or more.

(B) Depression over Bay of Bengal intensified into a deep depression

Yesterday's depression over eastcentral & adjoining southeast Bay of Bengal and North Andaman Sea moved northwestwards in past 24 hours, intensified into a deep depression in the early morning (0530 hours IST) of today, the 6th November. It lay centred at 0830 hrs IST of over eastcentral & adjoining southeast Bay of Bengal, near Lat.13.4°N and Long. 89.3°E, about 390 km west-northwest of Maya Bandar (Andaman Islands), about 810 km south-southeast of Paradip (Odisha), 920 km south-southeast of Sagar Islands (West Bengal) and 960 km south-southwest of Khepupara (Bangladesh).

It is very likely to intensify into a Cyclonic Storm during next 24 hours. It is very likely to move west-northwestwards for some more time and then north-northwestwards, towards West Bengal & adjoining north Odisha and Bangladesh coasts.

Forecast track and intensity are given in the following table:

Date/Time(IST)	Position (Lat. °N/ Long. °E)	Maximum sustained surface wind speed (Kmph)	Category of cyclonic disturbance
06.11.19/0830	13.4/89.3	50-60 gusting to 70	Deep Depression
06.11.19/1130	13.5/88.9	50-60 gusting to 70	Deep Depression
06.11.19/1730	13.8/88.6	60-70 gusting to 80	Cyclonic Storm
06.11.19/2330	14.6/88.4	60-70 gusting to 80	Cyclonic Storm
07.11.19/0530	15.3/88.2	70-80 gusting to 90	Cyclonic Storm
07.11.19/1730	16.6/88.0	90-100 gusting to 110	Severe Cyclonic Storm
08.11.19/0530	17.6/87.9	100-110 gusting to 120	Severe Cyclonic Storm
08.11.19/1730	18.4/87.9	110-120 gusting to 135	Severe Cyclonic Storm
09.11.19/0530	19.1/87.9	110-120 gusting to 135	Severe Cyclonic Storm
09.11.19/1730	19.6/88.0	120-130 gusting to 145	Very Severe Cyclonic Storm
10.11.19/0530	19.8/88.1	120-130 gusting to 145	Very Severe Cyclonic Storm
10.11.19/1730	20.0/88.2	110-120 gusting to 135	Severe Cyclonic Storm
11.11.19/0530	20.2/88.3	100-110 gusting to 120	Severe Cyclonic Storm

Warnings:

(i) Rainfall:

- **Andaman and Nicobar Islands:** Light to moderate rainfall at most places very likely over **Andaman and Nicobar Islands** during next 24 hours.
- **Odisha:** Light to moderate rainfall at most places very likely over **north coastal districts of Odisha** from 9th & 10th Nov. 2019.
- **West Bengal:** Light to moderate rainfall at most places with heavy falls at isolated places very likely over **coastal districts of West Bengal** on 10th & 11th Nov. 2019.

(ii) Wind warning

- **Andaman and Nicobar Islands:** Strong wind speed reaching 35-45 kmph gusting to 55 kmph is likely to prevail over Andaman Islands, north Andaman Sea during next 24 hours.
- **Bay of Bengal:** Squally wind speed reaching 50-60 kmph gusting to 70 kmph is prevailing over east central and adjoining southeast Bay of Bengal around the system centre. It will become gale wind speed reaching 70-80 kmph gusting to 90 kmph by 7th November morning. It will gradually increase further becoming 120-130 kmph gusting to 145 kmph over northwest and adjoining central Bay of Bengal by 9th November evening.

Contact: Cyclone Warning Division, Office of the Director General of Meteorology,
India Meteorological Department, Ministry of Earth Sciences.

Phone: (91) 11-24652484, FAX: (91) 11-24643128, 24623220, E-mail: cwdhq2008@gmail.com, Website: rsmcnewdelhi.imd.gov.in

Spatial rainfall distribution: Isolated: <25%, A few: 26-50%, Many: 51-75%, Most: 76-100%

Rainfall amount (mm): Heavy rain: 64.5 – 115.5, Very heavy rain: 115.6 – 204.4, Extremely heavy rain: 204.5 or more.

- **Odisha & West Bengal coasts:** Squally wind speed reaching 40 – 50 kmph gusting to 60 kmph likely to commence over northwest Bay of Bengal off Odisha – West Bengal coasts from 8th November evening and gradually increase thereafter.

(iii) Sea condition

- Sea condition will be very rough to High over eastcentral Bay of Bengal till 7th November evening and become very high to phenomenal thereafter over central and adjoining northwest Bay of Bengal.
- Sea condition will be rough over north Andaman Sea during next 24 hours.

(iv) Fishermen Warning

- Fishermen are advised not to venture into north Andaman Sea and adjoining southeast Bay of Bengal during next 24 hours.
- Fishermen are advised not to venture into eastcentral Bay of Bengal during next 2 days and into westcentral and adjoining northwest Bay of Bengal during 8th – 10th November.
- Fishermen are advised not to venture into north Bay of Bengal along & off Odisha – west Bengal coasts from 8th November onwards.
- The fishermen out at Sea are advised to return to the coast from these areas.

Both the systems are under continuous surveillance and concerned state governments are being informed regularly.

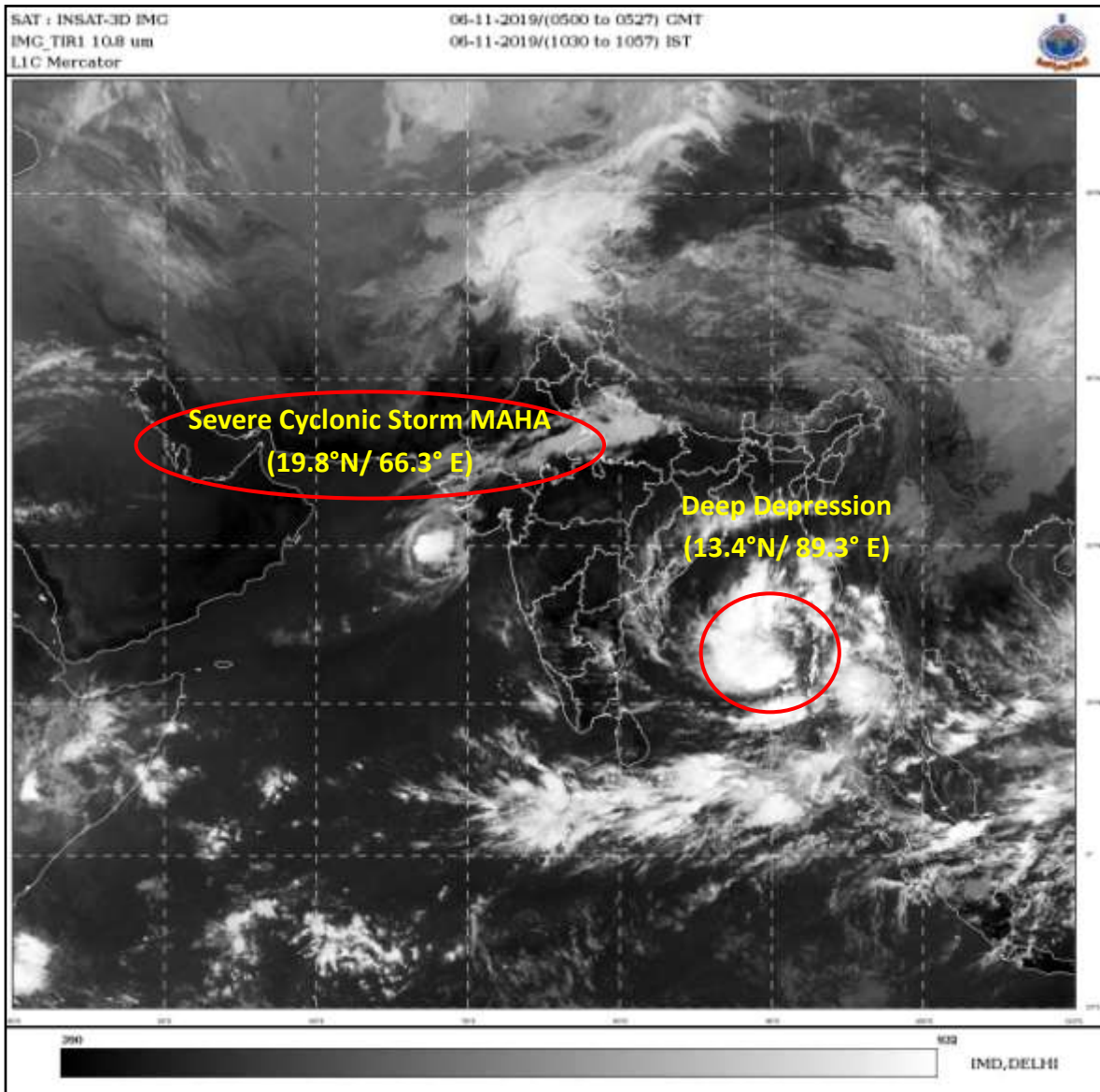
Kindly visit www.imd.gov.in, www.rsmcnewdelhi.imd.gov.in and www.mausam.imd.gov.in for updates on the system.

Contact: Cyclone Warning Division, Office of the Director General of Meteorology,
India Meteorological Department, Ministry of Earth Sciences.

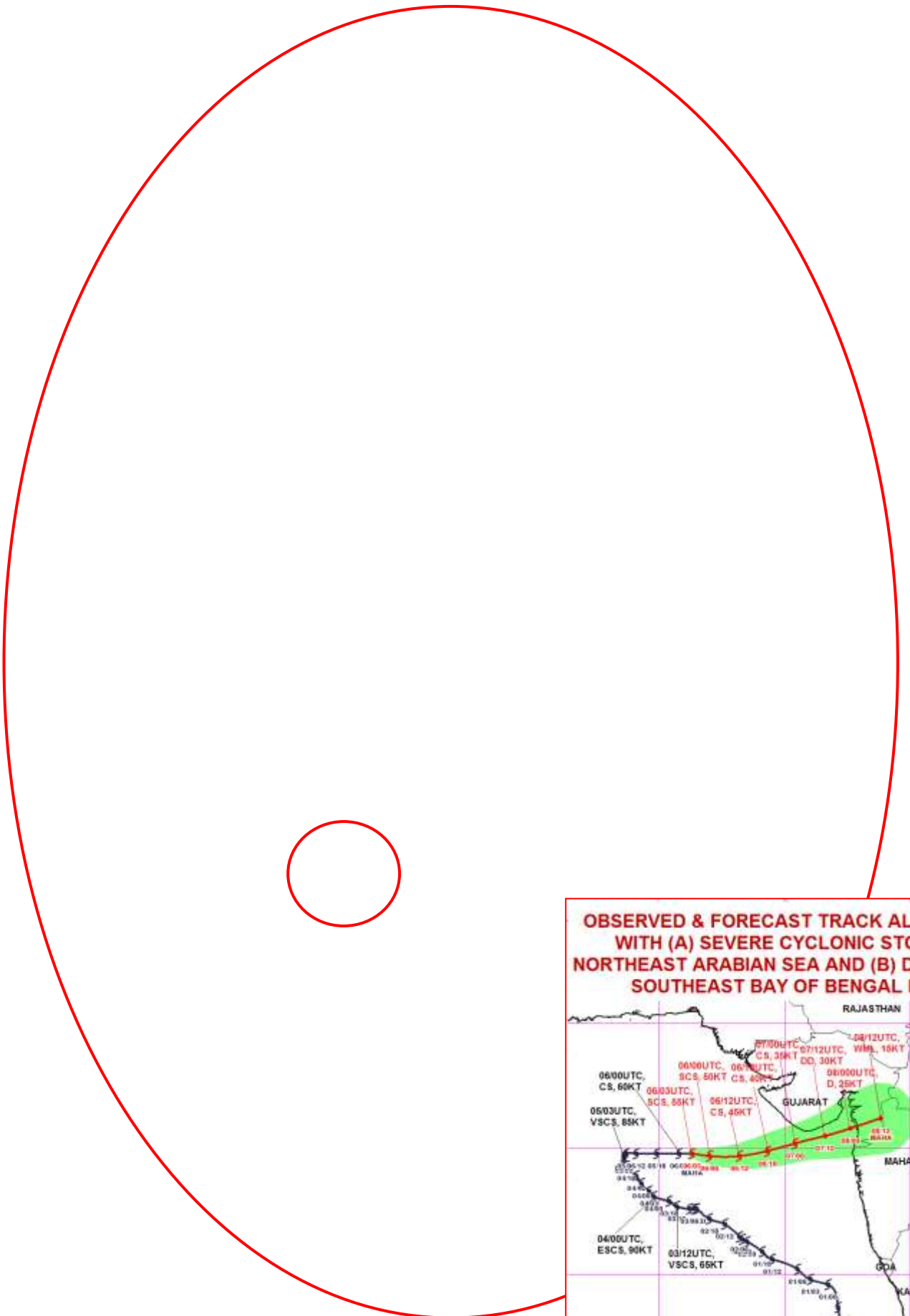
Phone: (91) 11-24652484, FAX: (91) 11-24643128, 24623220, E-mail: cwdhq2008@gmail.com, Website: rsmcnewdelhi.imd.gov.in

Spatial rainfall distribution: Isolated: <25%, A few: 26-50%, Many: 51-75%, Most: 76-100%

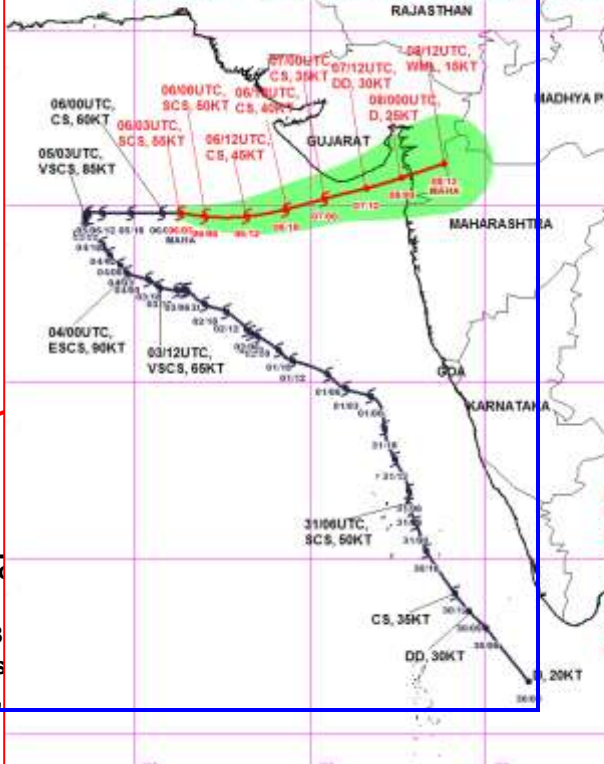
Rainfall amount (mm): Heavy rain: 64.5 – 115.5, Very heavy rain: 115.6 – 204.4, Extremely heavy rain: 204.5 or more.



Contact: Cyclone Warning Division, Office of the Director General of Meteorology,
India Meteorological Department, Ministry of Earth Sciences.
Phone: (91) 11-24652484, FAX: (91) 11-24643128, 24623220, E-mail: cwdhq2008@gmail.com, Website: rsmcnewdelhi.imd.gov.in
Spatial rainfall distribution: Isolated: <25%, A few: 26-50%, Many: 51-75%, Most: 76-100%
Rainfall amount (mm): Heavy rain: 64.5 – 115.5, Very heavy rain: 115.6 – 204.4, Extremely heavy rain: 204.5 or more.



OBSERVED & FORECAST TRACK ALONG WITH (A) SEVERE CYCLONIC STORM "MAHA" IN THE NORTH EAST ARABIAN SEA AND (B) DEEP DEPRESSION IN THE SOUTHEAST BAY OF BENGAL BASED ON



Contact: Cyclone Warning Division, Office of the Director General of Meteorology, India Meteorological Department, Ministry of Earth Sciences.
 Phone: (91) 11-24652484, FAX: (91) 11-24643128, 24623220, E-mail: cwdhq2008@india.gov.in
 Spatial rainfall distribution: Isolated: <25%, A few: 26-50%, Many: 51-75%, Most: 76-100%
 Rainfall amount (mm): Heavy rain: 64.5 – 115.5, Very heavy rain: 115.6 – 204.4