



Government of India
Ministry of Earth Sciences
Earth System Science Organisation



Earth System Science Organisation
India Meteorological Department

PRESS RELEASE-2

Time of issue: 1300 hours IST

Dated: 07-08-2019

Sub: Depression over northwest Bay of Bengal off north Odisha – West Bengal coasts intensified into deep depression over the same region

Yesterday's depression over northwest Bay of Bengal off north Odisha-West Bengal coasts moved northwestwards and intensified into a deep depression over the same region in the early morning (0530 hours IST) of today, the 7th August, 2019. Moving nearly northwards, it lay centred at 0830 hrs IST of today, the 7th August, 2019 near latitude 21.1°N and longitude 87.4°E over the same region, about 65 km southeast of Balasore (Odisha) and about 60 km south-southwest of Digha (West Bengal).

It is very likely to move initially northwestwards and cross north Odisha - West Bengal coasts close to north of Balasore in the afternoon of today, the 7th August 2019 and to move west northwestwards thereafter.

Warnings:

(i) Heavy rainfall warning

- ❖ Light to moderate rainfall at most places with heavy to very heavy rainfall at a few places and isolated **extremely heavy falls** (≥ 20 cm) very likely over Odisha and Chhattisgarh during next 24 hours. Light to moderate rainfall at most places with **isolated heavy to very heavy & extremely heavy falls** very likely over east Madhya Pradesh during the same period. Light to moderate rainfall at most places with isolated heavy falls are also very likely over Gangetic West Bengal, Bihar and Jharkhand during same period.
- ❖ Light to moderate rainfall at most places with heavy to very heavy falls at a few places very likely over north Andhra Pradesh and Telangana during next 24 hours, over Chhattisgarh during the subsequent 24 hours and over Vidarbha during next 48 hours.
- ❖ Subsequent west-northwestward movement of the system is very likely to cause Light to moderate rainfall at most places with heavy to very heavy falls and isolated **extremely heavy falls** (≥ 20 cm) over west Madhya Pradesh and east Rajasthan on 8th August. Heavy to very heavy rainfall at isolated places is likely to continue over west Madhya Pradesh and east Rajasthan on 9th August.
- ❖ Light to moderate rainfall at most places with heavy to very heavy rainfall at a few places and isolated **extremely heavy falls** (≥ 20 cm) very likely over Gujarat on 9th August.

(ii) Wind warning

- ❖ Squally wind speed reaching 55-65 kmph gusting to 75 kmph very likely along and off West Bengal-Odisha Coasts during next 12 hours and 45-55 kmph gusting to 65 kmph thereafter for subsequent 12 hours. Strong winds speed reaching 30-40 kmph gusting to 50 kmph are also very likely over interior areas of Odisha, Gangetic West Bengal and Jharkhand on today, the 7th August.

(iii) Sea condition

- ❖ State of Sea will be very rough to high over north Bay of Bengal and along & off Odisha - West Bengal Coasts during next 12 hours and rough to very rough for subsequent 12 hours.

(iv) Fishermen Warning

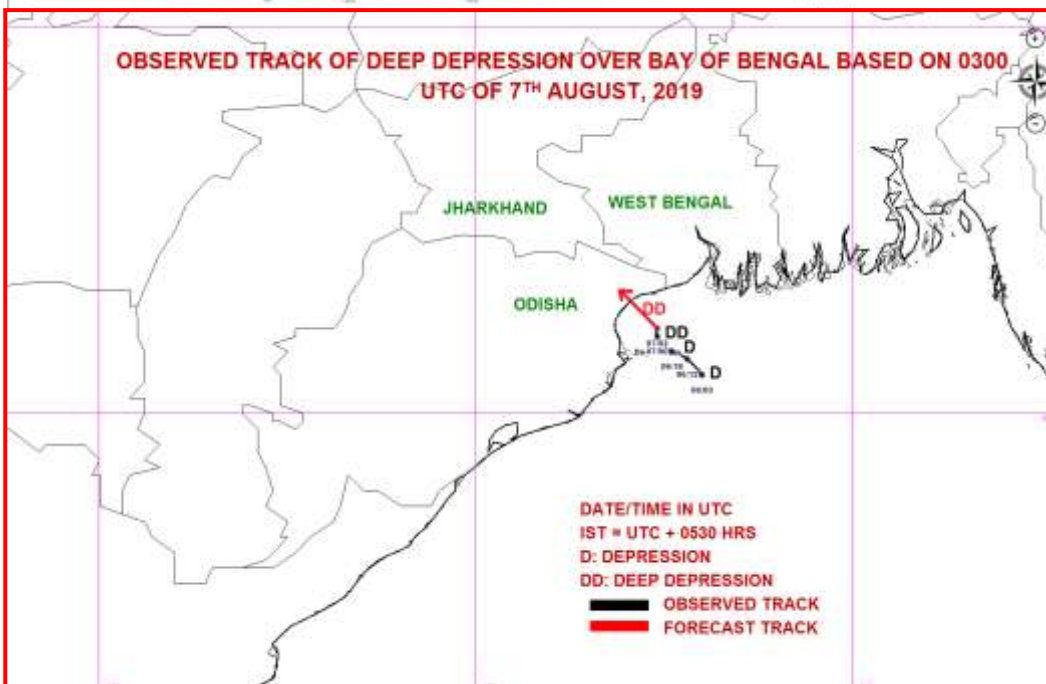
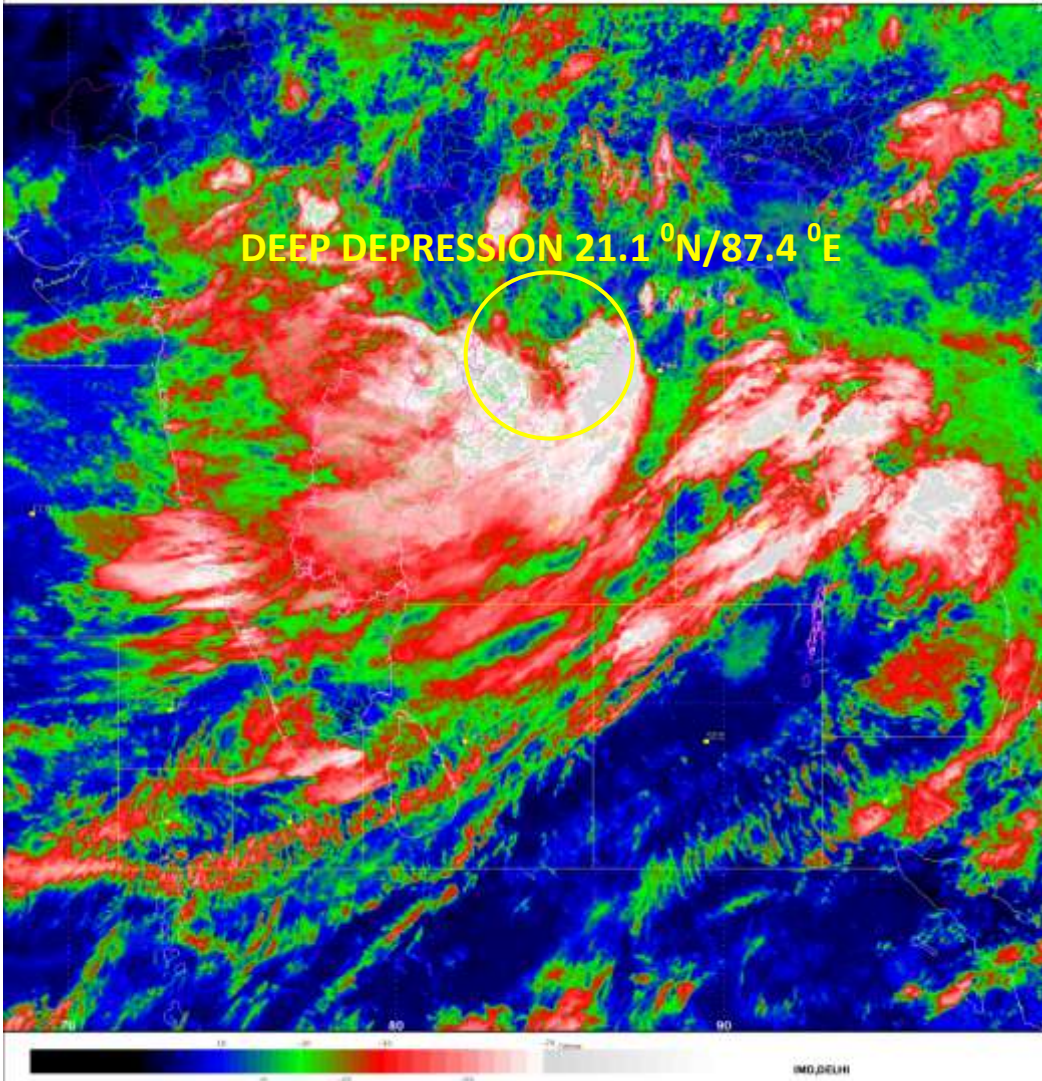
- ❖ Fishermen are advised not to venture into northwest Bay of Bengal and along and off Odisha and West Bengal coasts during next 24 hrs.

Contact: Cyclone Warning Division, Office of the Director General of Meteorology,
India Meteorological Department, Ministry of Earth Sciences.

Phone: (91) 11-24652484, FAX: (91) 11-24643128, 24623220, E-mail: cwdhq2008@gmail.com, Website: rsmcnewdelhi.imd.gov.in

Spatial rainfall distribution: Isolated: <25%, A few: 26-50%, Many: 51-75%, Most: 76-100%

Rainfall amount (mm): Heavy rain: 64.5 – 115.5, Very heavy rain: 115.6 – 204.4, Extremely heavy rain: 204.5 or more.



Contact: Cyclone Warning Division, Office of the Director General of Meteorology,
India Meteorological Department, Ministry of Earth Sciences.

Phone: (91) 11-24652484, FAX: (91) 11-24643128, 24623220, E-mail: cwdhq2008@gmail.com, Website: rsmcnewdelhi.imd.gov.in

Spatial rainfall distribution: Isolated: <25%, A few: 26-50%, Many: 51-75%, Most: 76-100%

Rainfall amount (mm): Heavy rain: 64.5 – 115.5, Very heavy rain: 115.6 – 204.4, Extremely heavy rain: 204.5 or more.