



Government of India
Ministry of Earth Sciences
Earth System Science Organisation



Earth System Science Organisation
India Meteorological Department

PRESS RELEASE- 15

Time of issue: 1400 hours IST

Dated: 07-11-2019

Sub: (A) Depression over Bay of Bengal intensified into a cyclonic storm “Bulbul” —Cyclone Watch for north Odisha-West Bengal coasts and (B) Severe Cyclonic Storm “MAHA” weakened into a depression

(A) Depression over Bay of Bengal intensified into a cyclonic storm “Bulbul”—Cyclone Watch for Odisha-West Bengal coasts

Yesterday’s deep depression over eastcentral & adjoining southeast Bay of Bengal (BoB) moved northwards and intensified into a cyclonic storm “BULBUL” (pronounced as Bul bul) over the same region in the midnight (2330 hrs IST) of 6th November. Continuing to move northwards, it lay centered at 0830 hrs IST of today, the 7th November 2019, over eastcentral Bay of Bengal, near Lat.14.7°N and Long. 89.3°E about 680 km south-southeast of Paradip (Odisha), 780 km south-southeast of Sagar Islands (West Bengal) and 810 km south-southwest of Khepupara (Bangladesh) . It is very likely to intensify into a Severe Cyclonic Storm during next 24 hours. It is very likely to move north-northwestwards initially and then northeastwards towards West Bengal and Bangladesh coasts.

Forecast track and intensity are given in the following table:

Date/Time(IST)	Position		Maximum sustained surface wind speed (kmph)	Category of cyclonic disturbance
	Lat. (°N)	Long. (°E)		
07.11.19/0830	14.7	89.3	65-75 gusting to 85	Cyclonic Storm
07.11.19/1130	15.0	89.2	70-80 gusting to 90	Cyclonic Storm
07.11.19/1730	15.7	88.8	80-90 gusting to 100	Cyclonic Storm
07.11.19/2330	16.2	88.4	80-90 gusting to 100	Cyclonic Storm
08.11.19/0530	16.9	88.2	85-95 gusting to 105	Severe Cyclonic Storm
08.11.19/1730	18.3	88.0	95-105 gusting to 115	Severe Cyclonic Storm
09.11.19/0530	19.4	87.9	120-130 gusting to 145	Very Severe Cyclonic Storm
09.11.19/1730	20.1	88.0	120-130 gusting to 145	Very Severe Cyclonic Storm
10.11.19/0530	20.8	88.4	110-120 gusting to 135	Severe Cyclonic Storm
10.11.19/1730	21.0	88.7	100-110 gusting to 120	Severe Cyclonic Storm
11.11.19/0530	21.1	89.2	90-100 gusting to 110	Severe Cyclonic Storm
11.11.19/1730	21.1	89.5	75-85 gusting to 95	Cyclonic Storm
12.11.19/0530	21.1	89.8	60-70 gusting to 80	Cyclonic Storm

Warnings:

(i) Rainfall:

- **Andaman and Nicobar Islands:** Light to moderate rainfall at most places very likely over **Andaman and Nicobar Islands** during next 24 hours.

- **Odisha:**

(i) Light to moderate rainfall at many places very likely over **north coastal districts of Odisha** with isolated heavy to very heavy falls over Puri, Kendrapara and Jagatsinghpur districts and heavy falls at isolated places over in the remaining districts on 8th November 2019.

Contact: Cyclone Warning Division, Office of the Director General of Meteorology,
India Meteorological Department, Ministry of Earth Sciences.

Phone: (91) 11-24652484, FAX: (91) 11-24643128, 24623220, E-mail:cwdhq2008@gmail.com, Website: rsmcnewdelhi.imd.gov.in

Spatial rainfall distribution: Isolated: <25%, A few: 26-50%, Many: 51-75%, Most: 76-100%

Rainfall amount (mm): Heavy rain: 64.5 – 115.5, Very heavy rain: 115.6 – 204.4, Extremely heavy rain: 204.5 or more.

(ii) Light to moderate rainfall at most places very likely over **north coastal districts of Odisha** with isolated heavy to very heavy falls over Balasore, Bhadrak, Kendrapara and Jagatsinghpur districts and heavy falls at isolated places over Mayurbhanj, Cuttack and Jajpur districts on 9th November 2019.

• **West Bengal:**

(i) Light to moderate rainfall at most places very likely over **coastal districts of West Bengal** with extremely heavy falls (≥ 20 cm) at isolated places North and South 24 Parganas and isolated heavy to very heavy falls over East and West Medinipur, Howrah, Hooghly on 9th November 2019.

(ii) Light to moderate rainfall at most places very likely over **coastal districts of West Bengal** with isolated heavy to very heavy falls over North and South 24 Parganas, isolated heavy falls over Howrah, Hooghly and Nadiya districts on 10th November 2019.

(ii) Wind warning

• **Bay of Bengal:** Gale wind speed reaching 65-75 kmph gusting to 85 kmph is prevailing over east central Bay of Bengal around the system centre. It is very likely to increase gradually and become 85-95 kmph gusting to 105 kmph by 8th November morning. It will increase further becoming 120-130 kmph gusting to 145 kmph over north Bay of Bengal by 9th November morning for subsequent 12 hours.

• **Odisha coast:** Strong wind speed reaching 35 – 45 kmph gusting to 55 kmph becoming squally 45-55 gusting to 65 by afternoon of 8th over Kendrapara, Jagatsinghpur, Balasore and Bhadrak districts. Gale wind speed reaching 70-80 kmph gusting to 90 kmph likely towards evening of 9th November over Jagatsinghpur, Balasore and Bhadrak districts. It is likely to decrease from 10th onwards. Puri, Ganjam and Jajpur districts are likely to experience squally wind speed reaching 40-50kmph gusting to 60 kmph on 8th and 9th November.

• **West Bengal coast:** Squally wind speed reaching 40 – 50 kmph gusting to 60 kmph likely to commence over West Bengal coasts from 8th November night and gradually increase and becoming 55-65 kmph gusting to 75 kmph from 9th November evening. It is likely to increase to gale wind speed becoming 70-80 kmph gusting to 90 kmph by 10th morning.

(iii) Sea condition

• Sea condition will be high over eastcentral Bay of Bengal during next 24 hours and become very high from 8th November morning for subsequent 24 hours over central & adjoining northwest Bay of Bengal and very high to phenomenal over North Bay of Bengal by 9th November morning for subsequent 12 hours.

• Sea condition will be rough to very rough along and off Odisha coast from 8th onwards becoming very high on 9th and 10th November.

(iv) Fishermen Warning

• Total suspension of fishing operations from 8th onwards over Odisha-West Bengal coasts.

• Fishermen are advised not to venture into eastcentral Bay of Bengal during next 2 days and into westcentral & adjoining northwest Bay of Bengal during 8th & 9th Nov. 2019 and over north Bay of Bengal during 9th – 12th November.

• Fishermen are advised not to venture into northwest Bay of Bengal along & off Odisha – west Bengal coasts from 8th November onwards.

• The fishermen out at Sea are advised to return to the coast from these areas.

(v) Damage Expected over coastal districts of north Odisha and West Bengal

• Damage to thatched houses/ huts. Unattached metal sheets may fly.

- Damage to embankments/ salt pans.
- Partial damage to power and communication lines.
- Damage to Kutcha and some damage to Pucca roads. Flooding of escape routes.
- Breaking of tree branches, uprooting of trees. Damage to banana and papaya trees. Dead limbs blown from trees.
- Major damage to coastal crops.

(vi) Action Suggested for coastal districts of north Odisha and West Bengal

- Total suspension of fishing operations from 8th November onwards.
- People in affected areas to remain indoors.
- Movement in motor boats unsafe.
- Beach movement may be restricted

(B) Severe Cyclonic Storm “MAHA” weakened into a depression over eastcentral & adjoining northeast Arabian Sea

Yesterday’s severe cyclonic storm over the eastcentral and adjoining northeast Arabian Sea moved nearly eastwards and weakened into a cyclonic storm in the evening (1730 hrs IST) of 6th November and into a deep depression in the early morning (0530 hrs IST) of today, the 7th November. It lay centered at 0830 hrs IST of today over eastcentral & adjoining northeast Arabian Sea near latitude 20.0°N and longitude 70.0°E, about 100 km south-southwest of Veraval (Gujarat) and 120 km west-southwest of Diu. It is very likely to move east-northeastwards, weaken into a Depression over northeast & adjoining eastcentral Arabian Sea off south Gujarat coast during next 12 hours.

Forecast track and intensity are given in the following table:

Date/Time(IST)	Position		Maximum sustained surface wind speed (kmph)	Category of cyclonic disturbance
	Lat. (°N)	Long. (°E)		
07.11.19/0830	20.0	70.0	55-65 gusting to 75	Deep Depression
07.11.19/1130	20.0	70.3	50-60 gusting to 70	Deep Depression
07.11.19/1730	20.1	71.0	45-55 gusting to 65	Depression
07.11.19/2330	20.2	71.7	40-50 gusting to 60	Depression

Warnings:

(i) Rainfall:

- **Gujarat:** Light to moderate rainfall very likely at many places over south Gujarat state with heavy falls at isolated places over **Diu, Junagarh, Gir Somnath, Amreli, Bhavnagar** during next 24 hours.
- **Maharashtra:** Light to moderate rainfall at many places over northern most districts of Konkan (Palghar & Thane districts) during next 24 hours.

(ii) Wind warning

- **Gujarat: Daman, Diu, Dadra & Nagar Haveli:** Squally wind speed reaching 55-65 kmph gusting to 75 kmph likely to prevail over northeast Arabian Sea along & off **Junagarh, Gir Somnath, Diu, Amreli, Bhavnagar, Bharuch, Surat, Navsari, Valsad, Daman and Dadra & Nagar Haveli** districts. It is very likely to become 45-55 Kmph gusting to 65 Kmph over these areas from today, the 7th November evening for the subsequent 12 hours.
- **Maharashtra:** Squally wind speed reaching 45-55 kmph gusting to 60 kmph likely along & off north Maharashtra coast (along & off Palghar & Thane districts) from today, the 7th November evening for subsequent 24 hours.

Contact: Cyclone Warning Division, Office of the Director General of Meteorology, India Meteorological Department, Ministry of Earth Sciences.

Phone: (91) 11-24652484, FAX: (91) 11-24643128, 24623220, E-mail: cwdhq2008@gmail.com, Website: rsmcnewdelhi.imd.gov.in

Spatial rainfall distribution: Isolated: <25%, A few: 26-50%, Many: 51-75%, Most: 76-100%

Rainfall amount (mm): Heavy rain: 64.5 – 115.5, Very heavy rain: 115.6 – 204.4, Extremely heavy rain: 204.5 or more.

- **Arabian Sea:** Gale wind speed reaching 55-65 kmph gusting to 75 kmph is prevailing over eastcentral & adjoining northeast Arabian Sea around the system centre. It is very likely to decrease gradually and become 45-55 kmph gusting 65 kmph from today, the 7th November evening over northeast & adjoining eastcentral Arabian Sea and further decrease thereafter.

(iii) Sea condition

- **Gujarat Coast:** Sea condition will be rough to very rough along & off Gujarat coast during next 24 hours.
- **Maharashtra Coast:** Sea condition will be rough to very rough along & off north Maharashtra coast during next 24 hours.
- **Arabian Sea:** Sea condition will be rough to very rough over eastcentral and adjoining northeast Arabian Sea during next 24 hours.

(v) Fishermen Warning

- The fishermen are advised not to venture into eastcentral & adjoining northeast Arabian Sea along & off south Gujarat coast and adjoining north Maharashtra coast during next 24 hours.

Both the systems are under continuous surveillance and concerned state governments are being informed regularly.

Kindly visit www.imd.gov.in, www.rsmcnewdelhi.imd.gov.in and www.mausam.imd.gov.in for updates on the system.

Contact: Cyclone Warning Division, Office of the Director General of Meteorology,
India Meteorological Department, Ministry of Earth Sciences.

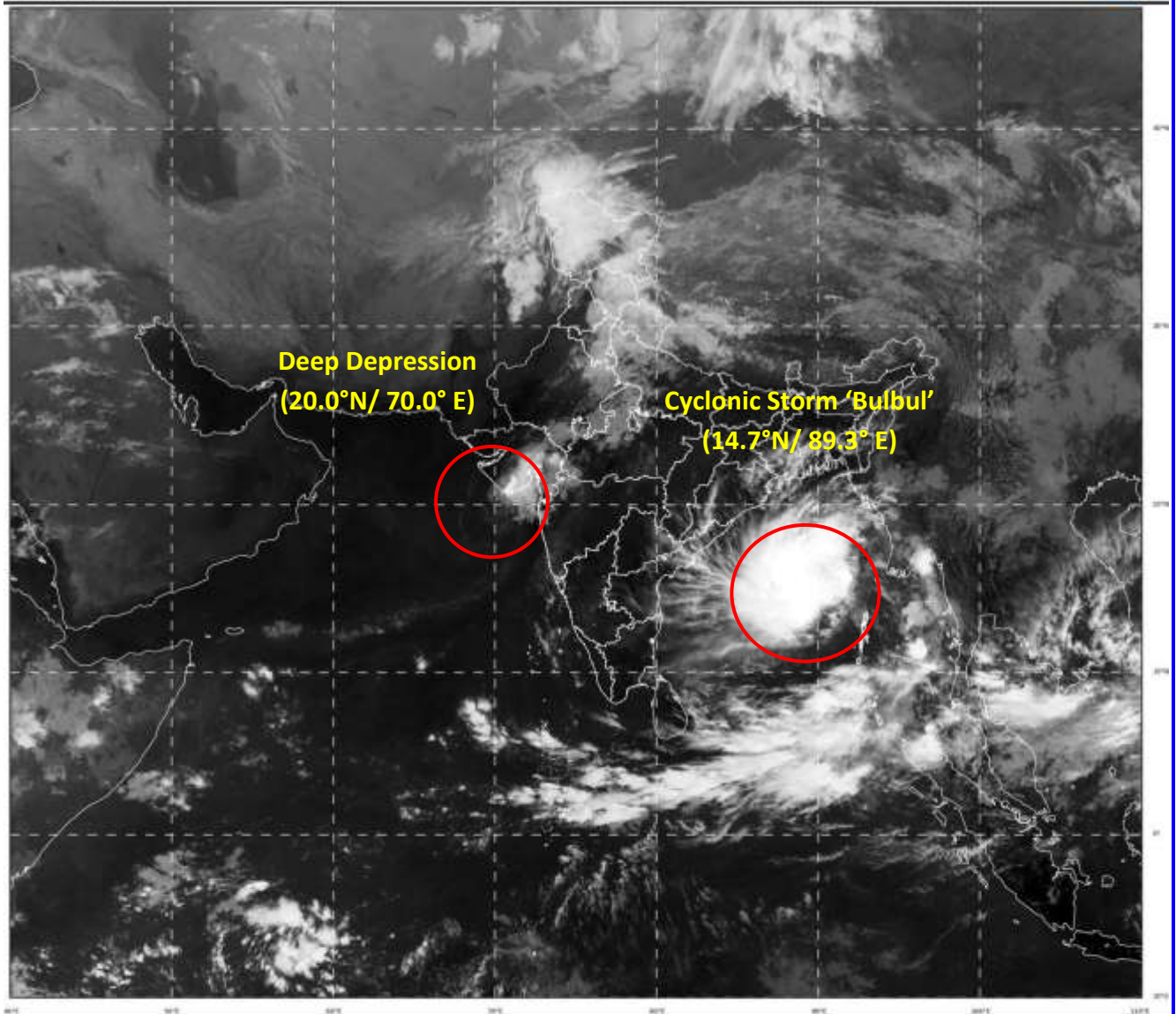
Phone: (91) 11-24652484, FAX: (91) 11-24643128, 24623220, E-mail: cwdhq2008@gmail.com, Website: rsmcnewdelhi.imd.gov.in

Spatial rainfall distribution: Isolated: <25%, A few: 26-50%, Many: 51-75%, Most: 76-100%

Rainfall amount (mm): Heavy rain: 64.5 – 115.5, Very heavy rain: 115.6 – 204.4, Extremely heavy rain: 204.5 or more.

SAT : INSAT-3D IMG
IMG_TIR1 10.8 um
LIC Mercator

07-11-2019/(0400 to 0427) GMT
07-11-2019/(0930 to 0957) IST



385

939

IMD, DELHI

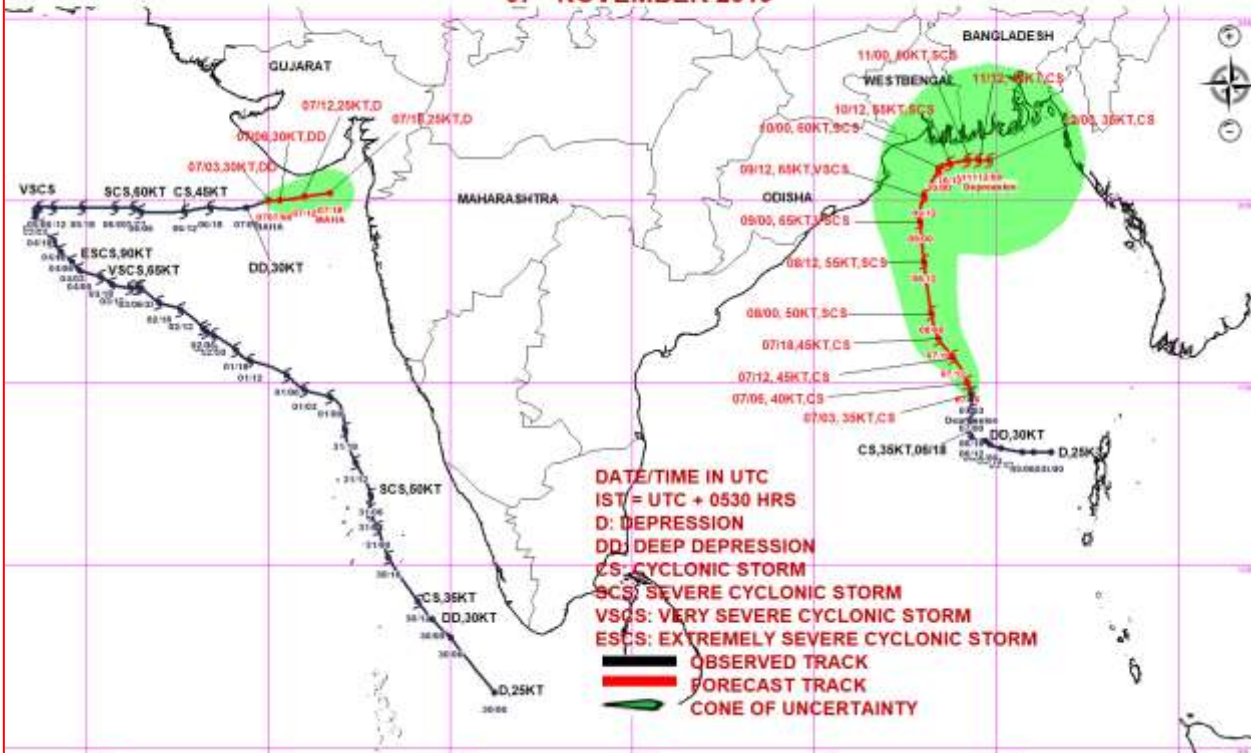
Contact: Cyclone Warning Division, Office of the Director General of Meteorology,
India Meteorological Department, Ministry of Earth Sciences.

Phone: (91) 11-24652484, FAX: (91) 11-24643128, 24623220, E-mail: cwdhq2008@gmail.com, Website: rsmcnewdelhi.imd.gov.in

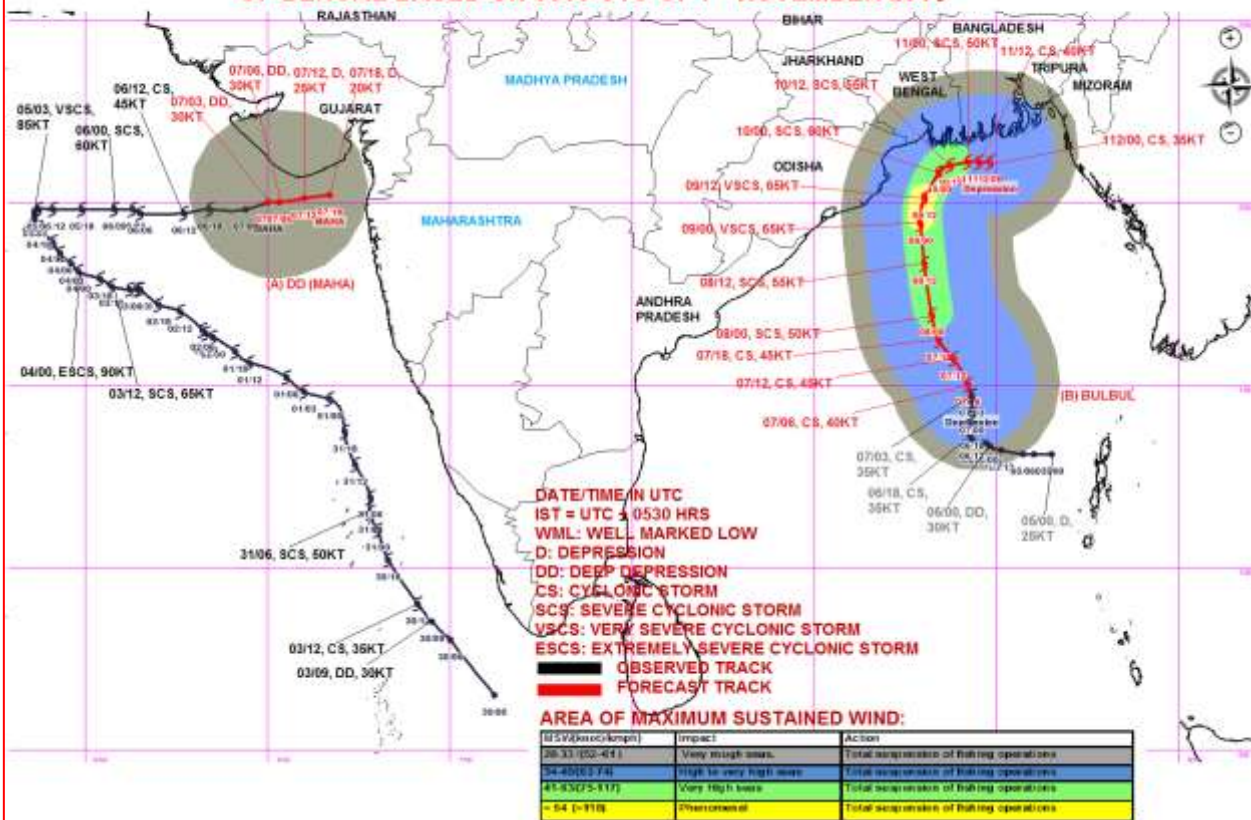
Spatial rainfall distribution: Isolated: <25%, A few: 26-50%, Many: 51-75%, Most: 76-100%

Rainfall amount (mm): Heavy rain: 64.5 – 115.5, Very heavy rain: 115.6 – 204.4, Extremely heavy rain: 204.5 or more.

OBSERVED & FORECAST TRACK ALONGWITH CONE OF UNCERTAINTY IN ASSOCIATION WITH (A) DEEP DEPRESSION OVER EASTCENTRAL & ADJOINING NORTHEAST ARABIAN SEA AND (B) CYCLONIC STORM "BULBUL" OVER EASTCENTRAL BAY OF BENGAL BASED ON 0300 UTC OF 07th NOVEMBER 2019



OBSERVED & FORECAST TRACK ALONGWITH QUADRANT WIND DISTRIBUTION IN ASSOCIATION WITH (A) DEEP DEPRESSION (MAHA) OVER EASTCENTRAL & ADJOINING NORTHEAST ARABIAN SEA AND (B) CYCLONIC STORM "BULBUL" OVER EASTCENTRAL BAY OF BENGAL BASED ON 0300 UTC OF 7th NOVEMBER 2019



Contact: Cyclone Warning Division, Office of the Director General of Meteorology,
India Meteorological Department, Ministry of Earth Sciences.

Phone: (91) 11-24652484, FAX: (91) 11-24643128, 24623220, E-mail: cwdhq2008@gmail.com, Website: rsmcnewdelhi.imd.gov.in

Spatial rainfall distribution: Isolated: <25%, A few: 26-50%, Many: 51-75%, Most: 76-100%

Rainfall amount (mm): Heavy rain: 64.5 – 115.5, Very heavy rain: 115.6 – 204.4, Extremely heavy rain: 204.5 or more.