



Government of India  
Ministry of Earth Sciences  
Earth System Science Organisation



Earth System Science Organisation  
India Meteorological Department

## PRESS RELEASE- 16

Time of issue: 1250 hours IST

Dated: 08-11-2019

**Sub: (A) Cyclonic storm “Bulbul” intensified into a very severe cyclonic storm — CYCLONE WARNING FOR WEST BENGAL COAST: ORANGE MESSAGE and (B) Deep depression (remnant of cyclone MAHA) over Arabian Sea weakened into a well marked low pressure area**

**(A) Cyclonic storm “Bulbul” intensified into a very severe cyclonic storm — CYCLONE WARNING FOR WEST BENGAL COAST: ORANGE MESSAGE**

Yesterday’s cyclonic storm “BULBUL” (pronounced as Bul bul) intensified into a severe cyclonic storm in the evening (1730 hrs IST) over westcentral & adjoining eastcentral Bay of Bengal. It moved nearly north-northwestwards and intensified into a very severe cyclonic storm over the same region in the early morning of today, the 8<sup>th</sup> November, 2019. At 0830 hours IST, it lay centered over the same region, near Lat.17.2°N and Long. 87.6°E about 350 km south-southeast of Paradip (Odisha), 490 km south-southwest of Sagar Islands (West Bengal) and 590 km south-southwest of Khepupara (Bangladesh) .

It is very likely to intensify further till early morning of 9<sup>th</sup> November. It is very likely to move nearly northwards till 9<sup>th</sup> November morning. Thereafter, it is very likely to re-curve northeastwards and cross West Bengal - Bangladesh Coasts between Sagar Islands (West Bengal) and Khepupara (Bangladesh), across Sunderban delta during the midnight of 9<sup>th</sup> /early hours of 10<sup>th</sup> November as a Severe Cyclonic Storm with maximum sustained wind speed of 110-120 kmph gusting to 135 kmph.

Forecast track and intensity are given in the following table:

Date/Time (IST)	Position		Maximum sustained surface wind speed (kmph)	Category of cyclonic disturbance
	Lat. (°N)	Long. (°E)		
08.11.19/0830	17.2	87.6	120-130 gusting to 145	Very Severe Cyclonic Storm
08.11.19/1130	17.7	87.6	130-140 gusting to 155	Very Severe Cyclonic Storm
08.11.19/1730	18.5	87.6	140-150 gusting to 165	Very Severe Cyclonic Storm
08.11.19/2330	19.1	87.7	150-160 gusting to 175	Very Severe Cyclonic Storm
09.11.19/0530	19.6	87.8	150-160 gusting to 175	Very Severe Cyclonic Storm
09.11.19/1730	20.8	88.3	130-140 gusting to 155	Very Severe Cyclonic Storm
10.11.19/0530	21.8	89.1	100-110 gusting to 120	Severe Cyclonic Storm
10.11.19/1730	22.5	90.1	75-85 gusting to 95	Cyclonic Storm
11.11.19/0530	22.8	90.8	50-60 gusting to 70	Deep Depression
11.11.19/1730	22.9	91.2	35-45 gusting to 55	Depression

### Warnings:

#### (i) Rainfall:

##### • Odisha:

- ❖ Light to moderate rainfall at most places very likely over **north coastal districts of Odisha** with isolated heavy falls over Puri, Kendrapara, Bhadrak, Balasore and Jagatsinghpur districts on 8<sup>th</sup> November 2019.

Contact: Cyclone Warning Division, Office of the Director General of Meteorology, India Meteorological Department, Ministry of Earth Sciences.

Phone: (91) 11-24652484, FAX: (91) 11-24643128, 24623220, E-mail: [cwdhq2008@gmail.com](mailto:cwdhq2008@gmail.com), Website: [rsmcnewdelhi.imd.gov.in](http://rsmcnewdelhi.imd.gov.in)

Spatial rainfall distribution: Isolated: <25%, A few: 26-50%, Many: 51-75%, Most: 76-100%

Rainfall amount (mm): Heavy rain: 64.5 – 115.5, Very heavy rain: 115.6 – 204.4, Extremely heavy rain: 204.5 or more.

❖ Light to moderate rainfall at most places very likely over **north coastal districts of Odisha** with isolated heavy to very heavy falls over Balasore, Bhadrak, Kendrapara and Jagatsinghpur districts and heavy falls at isolated places over Jajpur districts on 9<sup>th</sup> November 2019.

• **West Bengal:**

❖ Light to moderate rainfall at many places with isolated heavy falls very likely over North and South 24 Parganas and east Medinipur districts on 8<sup>th</sup> November.

❖ Light to moderate rainfall at most places very likely over **coastal districts of West Bengal** with heavy to very heavy falls at a few places and **extremely heavy falls ( ≥ 20 cm in 24 hours)** at isolated places over North & South 24 Parganas, East Medinipur, and isolated heavy to very heavy rainfall over West Medinipur, Howrah and Hooghly on 9<sup>th</sup> November 2019.

❖ Light to moderate rainfall at most places very likely over **coastal districts of West Bengal** with heavy to very heavy falls at a few places over North and South 24 Parganas, Nadiya and heavy falls at isolated places over East Medinipur district on 10<sup>th</sup> November 2019.

**(ii) Wind warning**

❖ **Bay of Bengal:** Gale wind speed reaching 120-130 kmph gusting to 140 kmph is prevailing over westcentral & adjoining eastcentral Bay of Bengal around the system centre. It is very likely to increase gradually and become 145-155 kmph gusting to 170 kmph by early hours of 9<sup>th</sup> November over northwest & adjoining westcentral Bay of Bengal for subsequent 12 hours and decrease gradually thereafter.

❖ **Odisha coast:** Strong wind speed reaching 35– 45 kmph gusting to 55 kmph prevails along & off Odisha coast. It is very likely to increase becoming squally wind speed reaching 45-55 kmph gusting to 65 kmph by afternoon of 8<sup>th</sup> along & off Kendrapara, Jagatsinghpur, Balasore and Bhadrak districts. Gale wind speed reaching 70-80 kmph gusting to 90 kmph very likely from around noon of 9<sup>th</sup> November along & off Jagatsinghpur, Kendrapara, Balasore and Bhadrak districts for subsequent 12 hours and decrease thereafter. Puri and Ganjam districts are likely to experience squally wind speed reaching 40-50 kmph gusting to 60 kmph from afternoon of 8<sup>th</sup> November for the subsequent 24 hours.

❖ **West Bengal coast:** Squally wind speed reaching 40 – 50 kmph gusting to 60 kmph likely to commence over West Bengal coast from 8<sup>th</sup> November night. It will gradually increase becoming gale wind speed reaching 110-120 kmph gusting to 135 kmph from 09<sup>th</sup> midnight to 10<sup>th</sup> forenoon along & off East Medinipur, North & South 24 Parganas. Squally wind speed reaching 40-60 Kmph gusting to 70 Kmph also likely over adjoining districts of West Medinipur, Howrah and Hooghly.

**(iii) Sea condition**

❖ Sea condition will be rough to very rough along & off Odisha and West Bengal coasts from 8<sup>th</sup> onwards becoming high to very high on 9<sup>th</sup> and 10<sup>th</sup> November.

❖ Sea condition will be rough to very rough over north Bay of Bengal till 8<sup>th</sup> evening. It will gradually become very high to phenomenal over northwest & adjoining westcentral Bay of Bengal from 8<sup>th</sup> November evening for subsequent 48 hours and very rough to very high over northeast Bay of Bengal from 9<sup>th</sup> November morning for subsequent 48 hours

❖ Sea condition is phenomenal over westcentral and adjoining eastcentral Bay of Bengal around the system centre. It will be Phenomenal to very high over these areas for subsequent 24 hours.

---

Contact: Cyclone Warning Division, Office of the Director General of Meteorology,  
India Meteorological Department, Ministry of Earth Sciences.

Phone: (91) 11-24652484, FAX: (91) 11-24643128, 24623220, E-mail: [cwdhq2008@gmail.com](mailto:cwdhq2008@gmail.com), Website: [rsmcnewdelhi.imd.gov.in](http://rsmcnewdelhi.imd.gov.in)

Spatial rainfall distribution: Isolated: <25%, A few: 26-50%, Many: 51-75%, Most: 76-100%

Rainfall amount (mm): Heavy rain: 64.5 – 115.5, Very heavy rain: 115.6 – 204.4, Extremely heavy rain: 204.5 or more.

#### **(iv) Storm Surge**

- Storm surge of about 1.0 to 1.5 meter height above Astronomical tide is very likely to inundate low lying areas of South and North 24 Parganas and east Medinipur during the time of landfall.

#### **(v) Fishermen Warning**

- Total suspension of fishing operations from 8th onwards over Odisha-West Bengal coasts.
- Fishermen are advised not to venture into westcentral & adjoining northwest Bay of Bengal during 8th & 9th Nov. 2019 and over north Bay of Bengal during 9th – 10th November.
- Fishermen are advised not to venture into northwest Bay of Bengal along & off Odisha – West Bengal coasts from 8<sup>th</sup> to 10<sup>th</sup> November.

#### **(vi) Damage Expected over coastal districts of north Odisha:**

- ❖ Damage to thatched houses/ huts. Unattached metal sheets may fly.
- ❖ Damage to embankments/ salt pans.
- ❖ Partial damage to power and communication lines.
- ❖ Major damage to Kutcha and some damage to Pucca roads. Flooding of escape routes.
- ❖ Breaking of tree branches, uprooting of trees. Damage to banana and papaya trees. Large dead limbs blown from trees.
- ❖ Major damage to coastal crops

#### **(vii) Damage Expected over coastal districts of West Bengal:**

- ❖ Major damage to thatched houses/ huts. Roof tops may blow off. Unattached metal sheets may fly.
- ❖ Minor damage to power and communication lines.
- ❖ Major damage to Kutcha and some damage to Pucca roads. Flooding of escape routes.
- ❖ Breaking of tree branches, uprooting of large avenue trees. Moderate damage to banana and papaya trees. Dead limbs blown from trees.
- ❖ Major damage to coastal crops.
- ❖ Damage to embankments/ salt pans.
- ❖ Small boats, country crafts may get detached from moorings.

#### **(vii) Action suggested for coastal districts of north Odisha**

- ❖ Total suspension of fishing operations from 8<sup>th</sup> November onwards.
- ❖ People in affected areas to remain indoors.
- ❖ Movement in motor boats unsafe.
- ❖ Beach movement to be restricted.

#### **(ix) Action suggested for coastal districts of West Bengal**

- ❖ Total suspension of fishing operations.
- ❖ Coastal hutment dwellers to be moved to safer places. Mobilise evacuation from coastal areas of South and North 24 Parganas. People in affected areas to remain indoors.
- ❖ Rail and Road traffic to be regulated.
- ❖ Movement in motor boats and small ships unsafe.
- ❖ Beach movement to be restricted.

---

Contact: Cyclone Warning Division, Office of the Director General of Meteorology,  
India Meteorological Department, Ministry of Earth Sciences.

Phone: (91) 11-24652484, FAX: (91) 11-24643128, 24623220, E-mail: [cwdhq2008@gmail.com](mailto:cwdhq2008@gmail.com), Website: [rsmcnewdelhi.imd.gov.in](http://rsmcnewdelhi.imd.gov.in)

Spatial rainfall distribution: Isolated: <25%, A few: 26-50%, Many: 51-75%, Most: 76-100%

Rainfall amount (mm): Heavy rain: 64.5 – 115.5, Very heavy rain: 115.6 – 204.4, Extremely heavy rain: 204.5 or more.

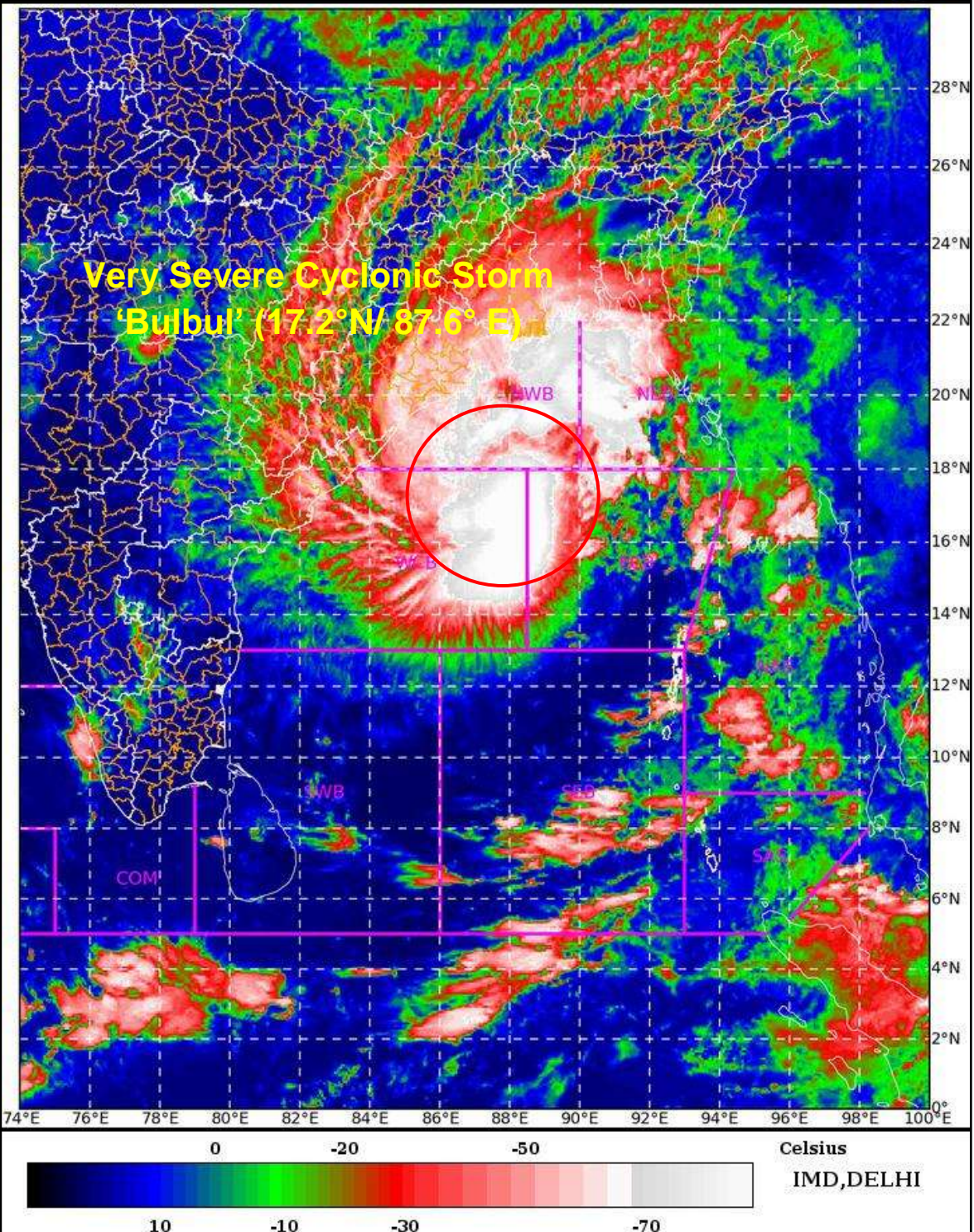
**(B) Deep depression (remnant of cyclone MAHA) over Arabian Sea weakened into a well marked low pressure area**

Yesterday's deep depression over eastcentral & adjoining northeast Arabian Sea weakened into a depression around noon (1130 hrs IST) and into a well marked low pressure area over northeast Arabian Sea and adjoining south Gujarat coast in the same evening (1730 hrs IST) of 07th November, 2019. This is last update in association with this system.

**Very severe cyclonic storm "Bulbul" is under continuous surveillance and concerned state governments are being informed regularly.**

Kindly visit [www.imd.gov.in](http://www.imd.gov.in), [www.rsmcnewdelhi.imd.gov.in](http://www.rsmcnewdelhi.imd.gov.in) and [www.mausam.imd.gov.in](http://www.mausam.imd.gov.in) for updates on the system.

SAT : INSAT-3D IMG 08-11-2019/(0330 to 0357) GMT  
IMG\_TIR1\_TEMP 10.8 um 08-11-2019/(0900 to 0927) IST  
L1C Mercator

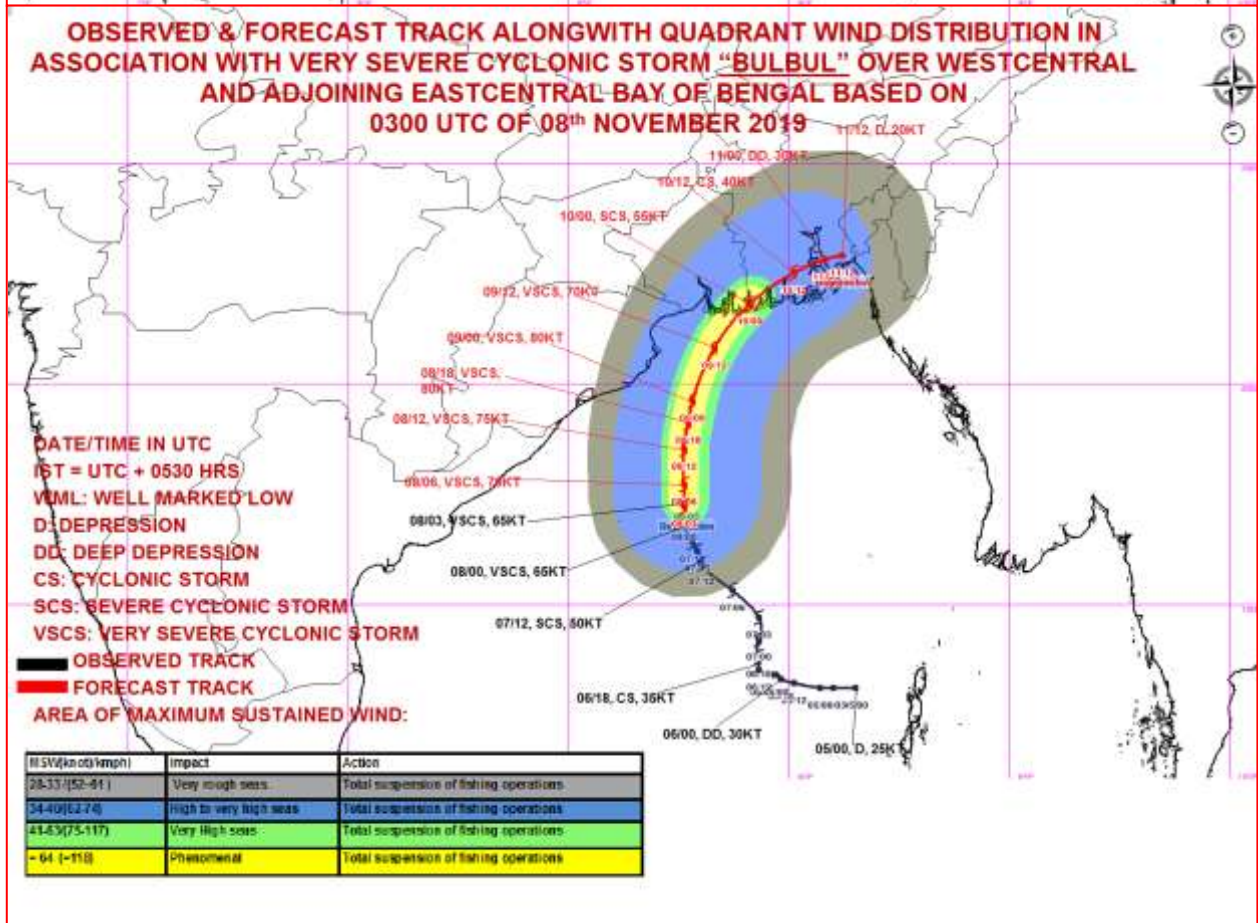
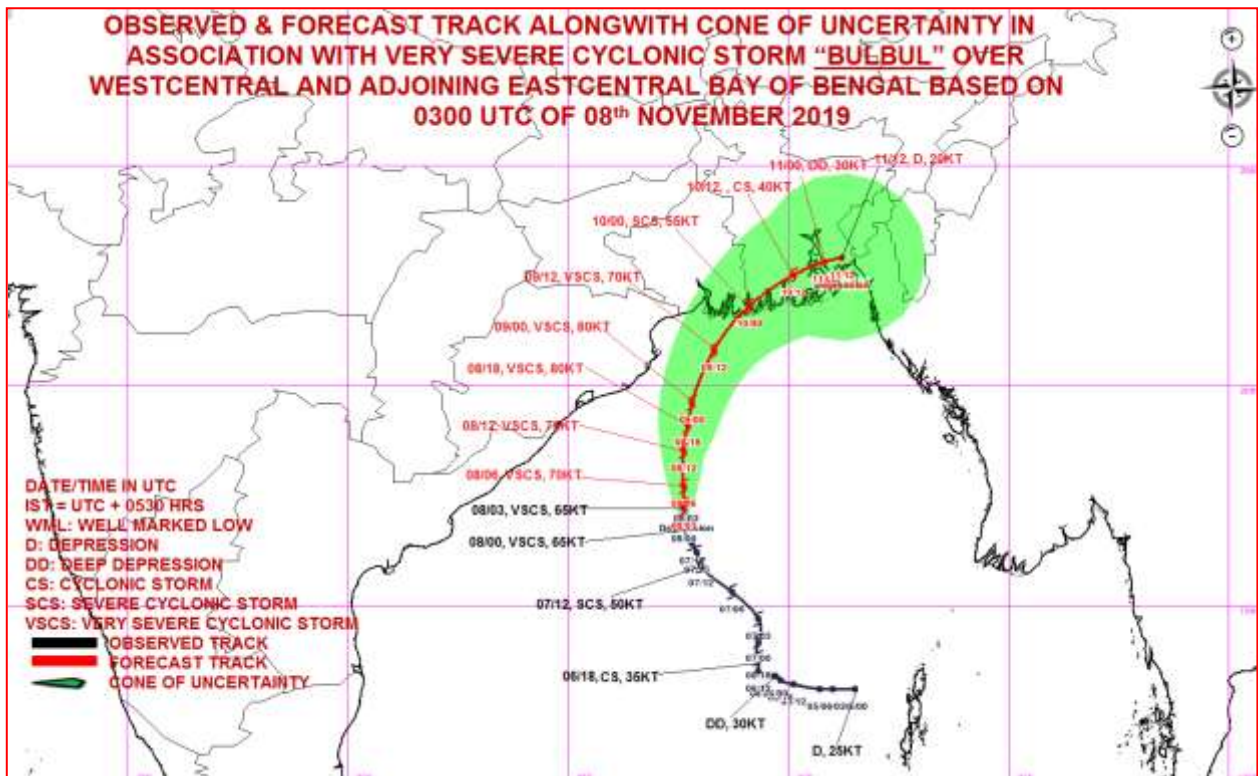


Contact: Cyclone Warning Division, Office of the Director General of Meteorology,  
India Meteorological Department, Ministry of Earth Sciences.

Phone: (91) 11-24652484, FAX: (91) 11-24643128, 24623220, E-mail: [cwdhq2008@gmail.com](mailto:cwdhq2008@gmail.com), Website: [rsmcnewdelhi.imd.gov.in](http://rsmcnewdelhi.imd.gov.in)

Spatial rainfall distribution: Isolated: <25%, A few: 26-50%, Many: 51-75%, Most: 76-100%

Rainfall amount (mm): Heavy rain: 64.5 – 115.5, Very heavy rain: 115.6 – 204.4, Extremely heavy rain: 204.5 or more.



Contact: Cyclone Warning Division, Office of the Director General of Meteorology, India Meteorological Department, Ministry of Earth Sciences.

Phone: (91) 11-24652484, FAX: (91) 11-24643128, 24623220, E-mail: [cwdhq2008@gmail.com](mailto:cwdhq2008@gmail.com), Website: [rsmcnewdelhi.imd.gov.in](http://rsmcnewdelhi.imd.gov.in)

Spatial rainfall distribution: Isolated: <25%, A few: 26-50%, Many: 51-75%, Most: 76-100%

Rainfall amount (mm): Heavy rain: 64.5 – 115.5, Very heavy rain: 115.6 – 204.4, Extremely heavy rain: 204.5 or more.