



Government of India
Ministry of Earth Sciences
Earth System Science Organisation



Earth System Science Organisation
India Meteorological Department

PRESS RELEASE-4

Time of issue: 1500 hours IST

Dated: 09-08-2019

Sub: Depression over West Madhya Pradesh & adjoining East Rajasthan

Yesterday's depression over north Chhattisgarh & neighbourhood moved west-northwestwards and lay centered at 1130 hrs IST of today, the 09th August, 2019 near latitude 24.0^oN and longitude 76.1^oE over West Madhya Pradesh & adjoining East Rajasthan about 70 km east-southeast of Udaipur (East Rajasthan), about 130 km south-southeast of Kota (East Rajasthan) and 140 km southwest of Guna (West Madhya Pradesh).

It is very likely to continue to move west-northwestwards and weaken gradually into a Well Marked Low Pressure Area during next 24 hours.

Warnings:

(i) Heavy rainfall warning

- ❖ Light to moderate rainfall at most places with heavy to very heavy rainfall at a few places with isolated **extremely heavy falls** ($\geq 20\text{cm}$) very likely over Gujarat Region, Saurashtra & Kutch, southeast Rajasthan and southwest Madhya Pradesh on **9th August**.
- ❖ Light to moderate rainfall at most places with heavy to very heavy rainfall at a few places with isolated **extremely heavy falls** ($\geq 20\text{cm}$) very likely over Saurashtra & Kutch; **Heavy to very heavy rainfall** at isolated places over Gujarat region and **Heavy rainfall** at isolated places over south Rajasthan on **10th August**.

(ii) Wind warning

- ❖ Strong winds speed reaching 30-40 kmph gusting to 50 kmph are also very likely over West Madhya Pradesh, south Rajasthan and Gujarat state during next 24 hours.

For details kindly visit www.imd.gov.in, www.rsmcnewdelhi.imd.gov.in or https://mausam.imd.gov.in/imd_latest/

Contact: Cyclone Warning Division, Office of the Director General of Meteorology,
India Meteorological Department, Ministry of Earth Sciences.

Phone: (91) 11-24652484, FAX: (91) 11-24643128, 24623220, E-mail: cwdhq2008@gmail.com, Website: rsmcnewdelhi.imd.gov.in

Spatial rainfall distribution: Isolated: <25%, A few: 26-50%, Many: 51-75%, Most: 76-100%

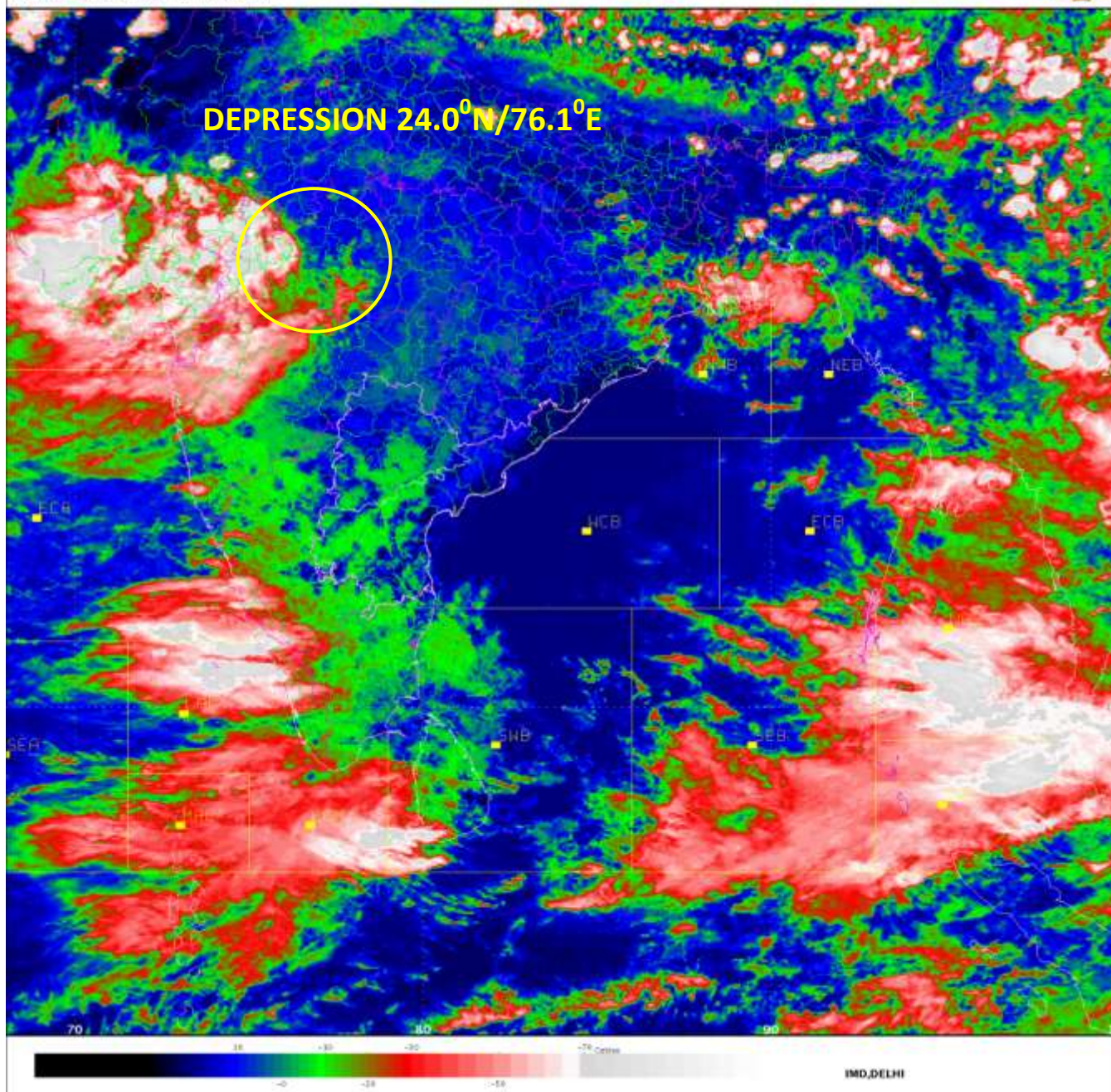
Rainfall amount (mm): Heavy rain: 64.5 – 115.5, Very heavy rain: 115.6 – 204.4, Extremely heavy rain: 204.5 or more.

SAT :INSAT-3D
IMG_TIR1_TEMP 10.8 um
SECTOR BAYOFBENGAL Mercator (NHC LUT)

09-08-2019/08:00 GMT
09-08-2019/13:30 IST



DEPRESSION 24.0°N/76.1°E

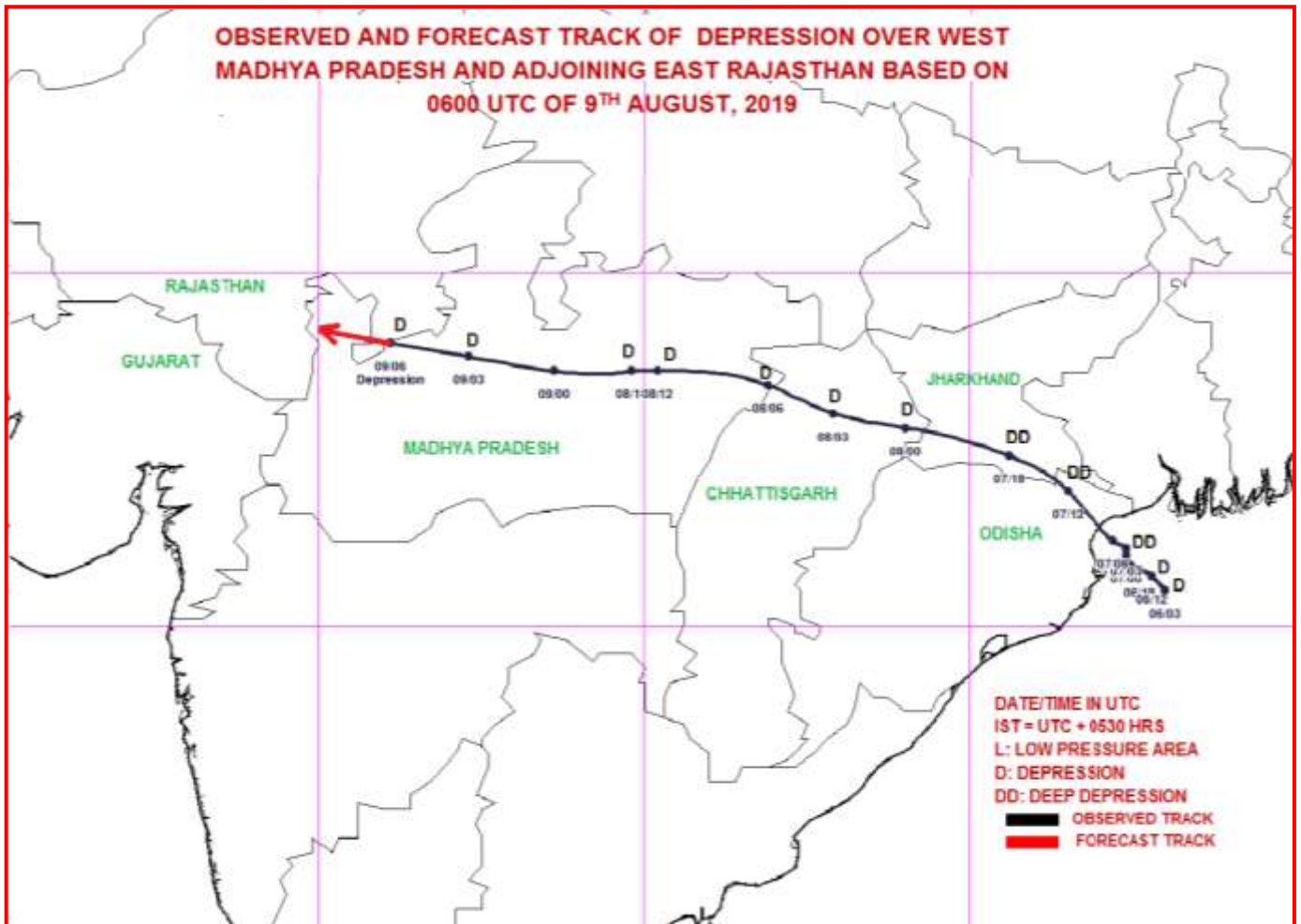


Contact: Cyclone Warning Division, Office of the Director General of Meteorology,
India Meteorological Department, Ministry of Earth Sciences.

Phone: (91) 11-24652484, FAX: (91) 11-24643128, 24623220, E-mail: cwdhq2008@gmail.com, Website: rsmcnewdelhi.imd.gov.in

Spatial rainfall distribution: Isolated: <25%, A few: 26-50%, Many: 51-75%, Most: 76-100%

Rainfall amount (mm): Heavy rain: 64.5 – 115.5, Very heavy rain: 115.6 – 204.4, Extremely heavy rain: 204.5 or more.



Contact: Cyclone Warning Division, Office of the Director General of Meteorology,
India Meteorological Department, Ministry of Earth Sciences.

Phone: (91) 11-24652484, FAX: (91) 11-24643128, 24623220, E-mail: cwdhq2008@gmail.com, Website: rsmcnewdelhi.imd.gov.in

Spatial rainfall distribution: Isolated: <25%, A few: 26-50%, Many: 51-75%, Most: 76-100%

Rainfall amount (mm): Heavy rain: 64.5 – 115.5, Very heavy rain: 115.6 – 204.4, Extremely heavy rain: 204.5 or more.