



Government of India
Ministry of Earth Sciences
Earth System Science Organisation



Earth System Science Organisation
India Meteorological Department

PRESS RELEASE-3

Time of issue: 1300 hours IST

Dated: 08-08-2019

Sub: Deep depression over northwest Bay of Bengal & adjoining areas crossed Odisha-West Bengal coasts and weakened into a depression

Yesterday's deep depression over northwest Bay of Bengal (BOB) & adjoining areas moved northwestwards and **crossed north Odisha-West Bengal coasts close to north of Balasore in the same afternoon (1330-1430 hrs IST of 7th August)**. Thereafter, it moved west-northwestwards and weakened into a depression over northeast Chhattisgarh & neighbourhood in the early morning (0530 hrs IST) of today, the 8th August, 2019. Continuing to move west-northwestwards, it lay centred at 0830 hrs IST near latitude 23.0⁰N and longitude 82.9⁰E over north Chhattisgarh & neighbourhood about 40 km west-northwest of Ambikapur (Chhattisgarh), about 250 km west of Ranchi (Jharkhand) and about 190 km south-southeast of Sidhi (East Madhya Pradesh).

It is very likely to continue to move west-northwestwards and weaken gradually into a Well Marked Low Pressure Area during next 48 hours.

Warnings:

(i) Heavy rainfall warning

- ❖ Light to moderate rainfall at most places with heavy to very heavy rainfall at a few places with isolated **extremely heavy falls** ($\geq 20\text{cm}$) very likely over Vidarbha and heavy to very heavy rainfall with **extremely heavy falls** ($\geq 20\text{cm}$) at isolated places over Chhattisgarh, Madhya Pradesh and Gujarat Region **during next 24 hours**.
- ❖ Light to moderate rainfall at most places with **heavy to very heavy rainfall at a few places** over East Rajasthan, heavy to very heavy rainfall at isolated places over Saurashtra & Kutch and heavy rainfall at isolated places over West Rajasthan **during next 24 hours**.
- ❖ Light to moderate rainfall at most places with heavy to very heavy rainfall at a few places with isolated **extremely heavy falls** ($\geq 20\text{cm}$) very likely over Gujarat Region and Saurashtra & Kutch and heavy to very heavy rainfall with isolated **extremely heavy falls** ($\geq 20\text{cm}$) over West Madhya Pradesh and East Rajasthan on **09th August**.
- ❖ Light to moderate rainfall at many places with heavy rainfall at isolated places over West Rajasthan, Vidarbha and East Madhya Pradesh on **09th August**.
- ❖ Light to moderate rainfall at most places with heavy to very heavy rainfall at isolated places over Gujarat Region and Saurashtra & Kutch and Light to moderate rainfall at a few places with heavy rainfall at isolated places over West Madhya Pradesh and Rajasthan on **10th August**.

(ii) Wind warning

- ❖ Strong winds speed reaching 30-40 kmph gusting to 50 kmph are also very likely over Madhya Pradesh, Chhattisgarh and Vidarbha during next 24 hours.

For details kindly visit www.imd.gov.in, www.rsmcnewdelhi.imd.gov.in or https://mausam.imd.gov.in/imd_latest/

Contact: Cyclone Warning Division, Office of the Director General of Meteorology,
India Meteorological Department, Ministry of Earth Sciences.

Phone: (91) 11-24652484, FAX: (91) 11-24643128, 24623220, E-mail: cwdhq2008@gmail.com, Website: rsmcnewdelhi.imd.gov.in

Spatial rainfall distribution: Isolated: <25%, A few: 26-50%, Many: 51-75%, Most: 76-100%

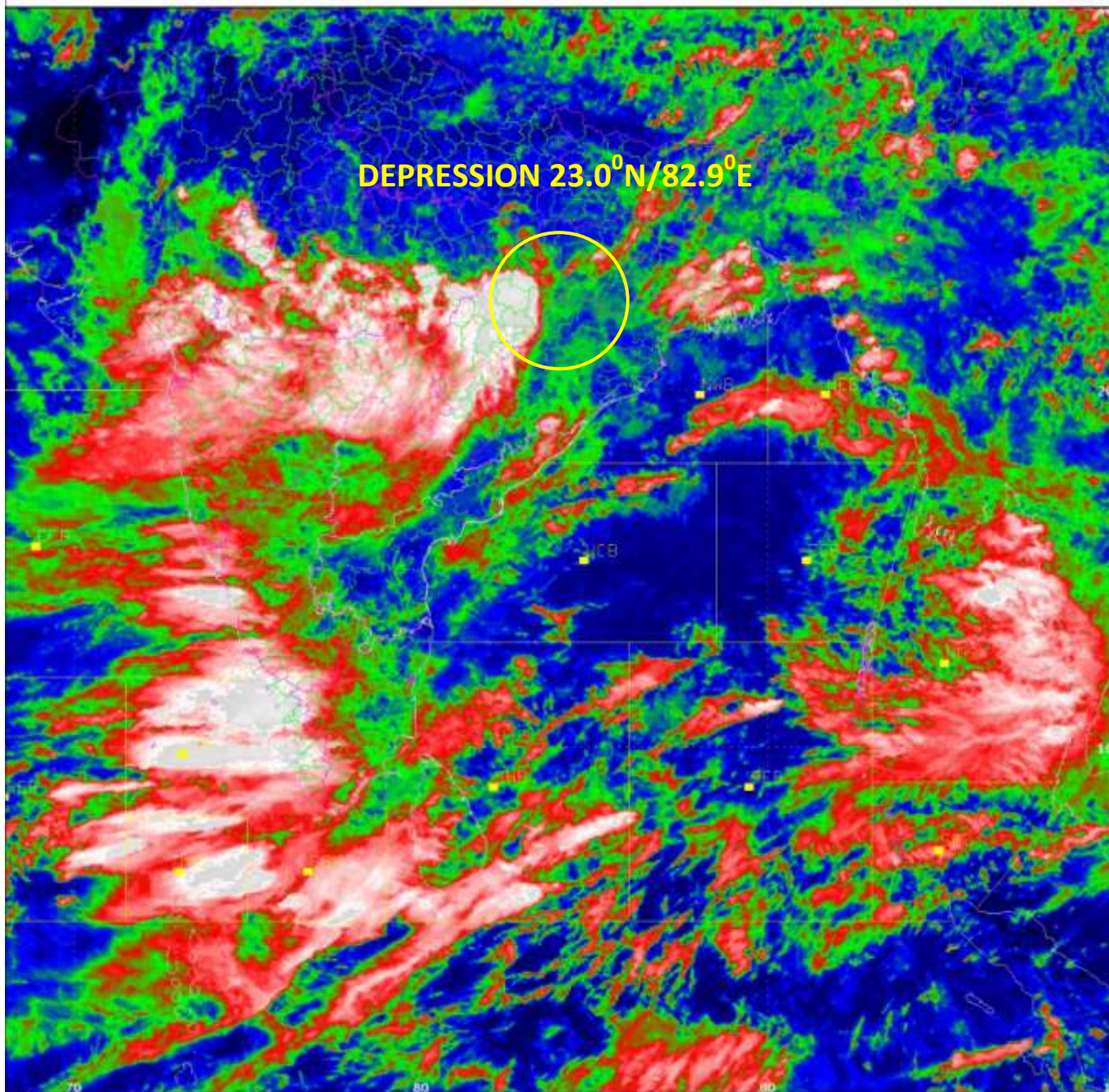
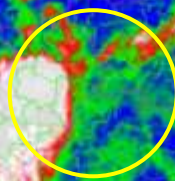
Rainfall amount (mm): Heavy rain: 64.5 – 115.5, Very heavy rain: 115.6 – 204.4, Extremely heavy rain: 204.5 or more.

SAT:INSAT-3D
IMG_TIR1_TEMP 10.8 um
SECTOR BAYOFBENGAL Mercator (NHC LUT)

08-08-2019/05:30 GMT
08-08-2019/11:00 IST



DEPRESSION 23.0°N/82.9°E



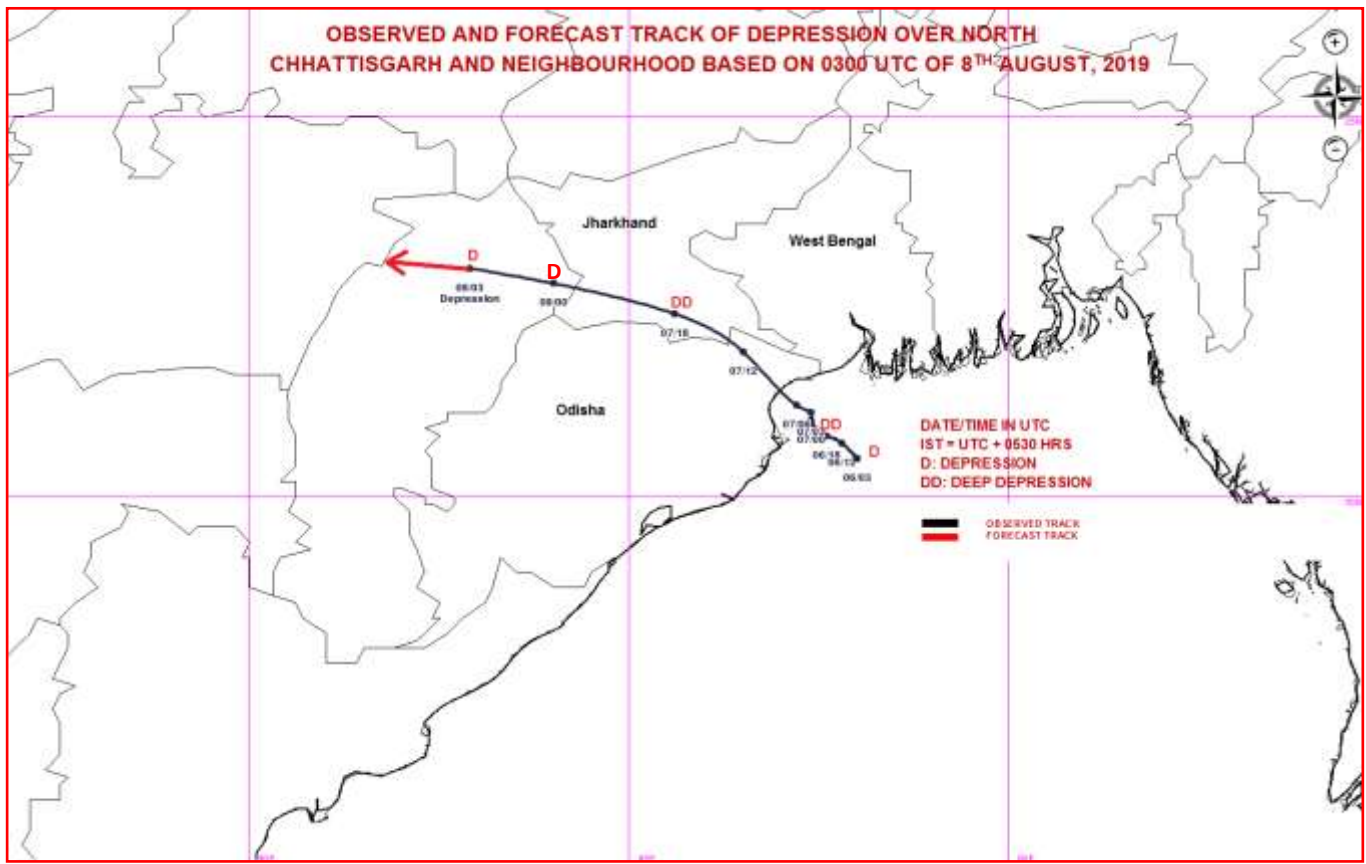
IMD,DELHI

Contact: Cyclone Warning Division, Office of the Director General of Meteorology,
India Meteorological Department, Ministry of Earth Sciences.

Phone: (91) 11-24652484, FAX: (91) 11-24643128, 24623220, E-mail: cwdhq2008@gmail.com, Website: rsmcnewdelhi.imd.gov.in

Spatial rainfall distribution: Isolated: <25%, A few: 26-50%, Many: 51-75%, Most: 76-100%

Rainfall amount (mm): Heavy rain: 64.5 – 115.5, Very heavy rain: 115.6 – 204.4, Extremely heavy rain: 204.5 or more.



Contact: Cyclone Warning Division, Office of the Director General of Meteorology,
India Meteorological Department, Ministry of Earth Sciences.

Phone: (91) 11-24652484, FAX: (91) 11-24643128, 24623220, E-mail: cwdhq2008@gmail.com, Website: rsmcnewdelhi.imd.gov.in

Spatial rainfall distribution: Isolated: <25%, A few: 26-50%, Many: 51-75%, Most: 76-100%

Rainfall amount (mm): Heavy rain: 64.5 – 115.5, Very heavy rain: 115.6 – 204.4, Extremely heavy rain: 204.5 or more.