



Government of India  
Ministry of Earth Sciences



India Meteorological Department

## PRESS RELEASE - 1

Time of issue: 1600 hours IST

Dated: 22-11-2020

**Sub: (1) Well Marked Low Pressure area over southwest and adjoining southeast Bay of Bengal - (Pre-cyclone Watch for Tamilnadu and Puducherry coasts)**

**(2) Severe Cyclonic Storm "GATI" over southwest Arabian Sea**

### 1. Well Marked Low Pressure area over southwest and adjoining southeast Bay of Bengal- (Pre-cyclone Watch for Tamilnadu and Puducherry coasts)

A low pressure area formed over Equatorial Indian Ocean and adjoining Southeast Bay of Bengal (BoB) in the morning (0830 hours IST) of 21<sup>st</sup> November, 2020. It lay as a well marked low pressure area over southwest & adjoining southeast BoB in the morning (0830 hours IST) and persisted with same intensity over the same region in the noon of today, the 22<sup>nd</sup> November, 2020.

**It is very likely to concentrate into a depression over Southwest Bay of Bengal during next 24 hours and intensify further into a cyclonic storm during subsequent 24 hours. It is very likely to move northwestwards and cross Tamil Nadu and Puducherry coasts between Karaikal and Mahabalipuram around 25<sup>th</sup> November 2020 noon/afternoon.**

#### Warnings:

##### (i) Rainfall

Under its influence, the rainfall activity is very likely to increase over south peninsular India from 23<sup>rd</sup> November onwards with fairly widespread to widespread rainfall/thunderstorm activity over Tamilnadu, Puducherry & Karaikal during 24<sup>th</sup> to 26<sup>th</sup> November and over south Coastal Andhra Pradesh, Rayalaseema & Telangana during 25<sup>th</sup> to 26<sup>th</sup> November, 2020.

Isolated extremely heavy rainfall activity also very likely over Tamilnadu & Puducherry during 24<sup>th</sup> to 25<sup>th</sup> and over south Coastal Andhra Pradesh & Rayalseema on 25<sup>th</sup> & 26<sup>th</sup> and over Telangana on 26<sup>th</sup> November, 2020.

Sub-Divisions	22 Nov 2020*	23 Nov 2020*	24 Nov 2020*	25 Nov 2020*	26 Nov 2020*
Coastal Andhra Pradesh	Rainfall at isolated places	Rainfall at isolated places	Rainfall at a few places with heavy rainfall at isolated places	Rainfall at most places with isolated heavy to very heavy with extremely heavy falls	Rainfall at most places with isolated heavy to very heavy with extremely heavy falls
Tamilnadu, Puducherry & Karaikal	Rainfall at a few places	Rainfall at a many places with heavy rainfall at isolated	Rainfall at most places with heavy to very heavy rainfall with extremely heavy falls at	Rainfall at most places with heavy to very heavy rainfall at a few places and extremely heavy falls	Rainfall at a many places with heavy rainfall at isolated

Contact: Cyclone Warning Division, Office of the Director General of Meteorology, India Meteorological Department, Ministry of Earth Sciences.

Phone: (91) 11-24652484, FAX: (91) 11-24643128, 24623220, E-mail: cwdhq2008@gmail.com, Website: [rsmcnwcdelhi.imd.gov.in](http://rsmcnwcdelhi.imd.gov.in)

Spatial rainfall distribution: Isolated: <25%, A few: 26-50%, Many: 51-75%, Most: 76-100%

Rainfall amount (mm): Heavy rain: 64.5 – 115.5, Very heavy rain: 115.6 – 204.4, Extremely heavy rain: 204.5 or more.

		places	isolated places	at isolated places	places
<b>South Interior Karnataka</b>	DRY	Rainfall at isolated places	Rainfall at a few places	Rainfall at a few places with heavy rainfall at isolated places	Rainfall at a few places
<b>Rayalaseema</b>	DRY	Rainfall at isolated places	Rainfall at a many places with isolated heavy falls	Rainfall at most places with heavy to very heavy rainfall with extremely heavy falls at isolated places	Rainfall at most places with heavy to very heavy rainfall with extremely heavy falls at isolated places
<b>Telangana</b>	DRY	DRY	Rainfall at isolated places	Rainfall at a few places with isolated heavy falls	Rainfall at most places with heavy to very heavy rainfall with extremely heavy falls at isolated places

### (ii) Wind warning

Squally weather with wind speed reaching 40-50 kmph gusting to 60 kmph likely to prevail over Equatorial Indian Ocean & adjoining central parts of South Bay of Bengal on 22<sup>nd</sup> November. It is likely to increase with wind speed of the order of 45-55 kmph gusting to 65 kmph likely over Southwest & adjoining west-central Bay of Bengal and along & off Tamil Nadu and south Andhra Pradesh coasts on 23<sup>rd</sup> and of the order of 55-65 kmph gusting to 75 kmph likely over the same area and also along & off South Andhra Pradesh coast and over Gulf of Mannar on 24<sup>th</sup>. It is very likely to increase gradually becoming 80-90 kmph gusting 100 kmph over southwest Bay of Bengal, and along and off Tamilnadu and Puducherry coasts around the region of landfall on 25<sup>th</sup> November 2020. Squally weather with wind speed reaching 55-65 kmph gusting to 75 kmph likely to prevail over Andhra Pradesh coast on 25<sup>th</sup> November 2020.

### (iii) Sea condition

Sea condition will be rough to very rough over Equatorial Indian Ocean & adjoining central parts of South Bay of Bengal on 22<sup>nd</sup> November; Southwest & adjoining west-central Bay of Bengal and along & off Tamil Nadu & Puducherry coast on 23<sup>rd</sup> and very rough to High over Southwest and adjoining west-central Bay of Bengal and along & off Tamil Nadu, Puducherry & south Andhra Pradesh coasts and also over Gulf of Mannar on 24<sup>th</sup> and 25<sup>th</sup> November, 2020.

### (iv) Fishermen Warning

Fishermen are advised not to venture into Equatorial Indian Ocean & adjoining central parts of South Bay of Bengal on 22<sup>nd</sup> November; over Southwest & adjoining west-central Bay of Bengal,

Contact: Cyclone Warning Division, Office of the Director General of Meteorology, India Meteorological Department, Ministry of Earth Sciences.

Phone: (91) 11-24652484, FAX: (91) 11-24643128, 24623220, E-mail: [cwdhq2008@gmail.com](mailto:cwdhq2008@gmail.com), Website: [rsmcnwdelhi.imd.gov.in](http://rsmcnwdelhi.imd.gov.in)

Spatial rainfall distribution: Isolated: <25%, A few: 26-50%, Many: 51-75%, Most: 76-100%

Rainfall amount (mm): Heavy rain: 64.5 – 115.5, Very heavy rain: 115.6 – 204.4, Extremely heavy rain: 204.5 or more.

Gulf of Mannar and along & off Tamil Nadu, Puducherry and south Andhra Pradesh coasts during 22-25<sup>th</sup> November.

Also the fishermen out at Sea are advised to return to the coast by today.

## 2. Severe Cyclonic Storm “GATI” over southwest Arabian Sea

A depression formed over southwest Arabian Sea in the midnight (2330 hours IST) of 21<sup>st</sup> November, 2020. It rapidly intensified into deep depression in the early morning (0530 hours IST), into cyclonic storm “GATI” in the morning (0830 hours IST) and further into **Severe Cyclonic Storm around noon (1130 hours IST)** over the same region, today the 22<sup>nd</sup> November, 2020. It lay centered at 1130 hrs IST of today over southwest Arabian Sea near Latitude 10.4° N and Longitude 52.6°E, 290 km south-southeast of Socotra (Yemen), 180 km east-southeast of Ras Binnah (Somalia) and 270 km east-southeast of Alula (Somalia).

**It is very likely to move nearly westwards and cross Somalia coast around 10.5° N (south of Ras Binnah (Somalia)) during early hours of 23<sup>rd</sup> November as a very severe cyclonic storm with a wind speed of 120-130 kmph gusting to 145 kmph.**

Forecast track and intensity are given below:

Date/Time(IST)	Position (Lat. °N/ long. °E)	Maximum sustained surface wind speed (Kmph)	Category of cyclonic disturbance
22.11.20/1130	10.4/52.6	90-100 gusting to 110	Severe Cyclonic Storm
22.11.20/1730	10.3/51.7	120-130 gusting to 145	Very Severe Cyclonic Storm
22.11.20/2330	10.4/50.6	120-130 gusting to 145	Very Severe Cyclonic Storm
23.11.20/0530	10.5/49.5	90-100 gusting to 110	Severe Cyclonic Storm
23.11.20/1130	10.6/48.4	60-70 gusting to 80	Cyclonic Storm
23.11.20/2330	10.7/46.5	40-50 gusting to 60	Depression
24.11.20/1130	10.8/44.5	20-30 gusting to 40	Low Pressure Area

As the system is very likely to move away from the Indian coast no adverse weather associated with this system is likely over the west coast of India. However, warnings for Ship and Fishermen prevail over southwest Arabian Sea as specified below.

### (i) Wind warning

Gale wind speed reaching 90-100 kmph gusting to 110 kmph is prevailing over southwest Arabian Sea. It is very likely to increase gradually becoming 120-130 kmph during next 06 hrs over the same region and the same speed will continue till the landfall by early hrs of 23<sup>rd</sup> Nov. 2020. It will gradually decrease thereafter.

### (ii) Sea condition

Sea condition will be very high to phenomenal over southwest Arabian Sea till 23<sup>rd</sup> November morning and improve thereafter.

### (iii) Fishermen Warning

Fishermen are advised not to venture into southwest Arabian Sea till 23<sup>rd</sup> November noon.

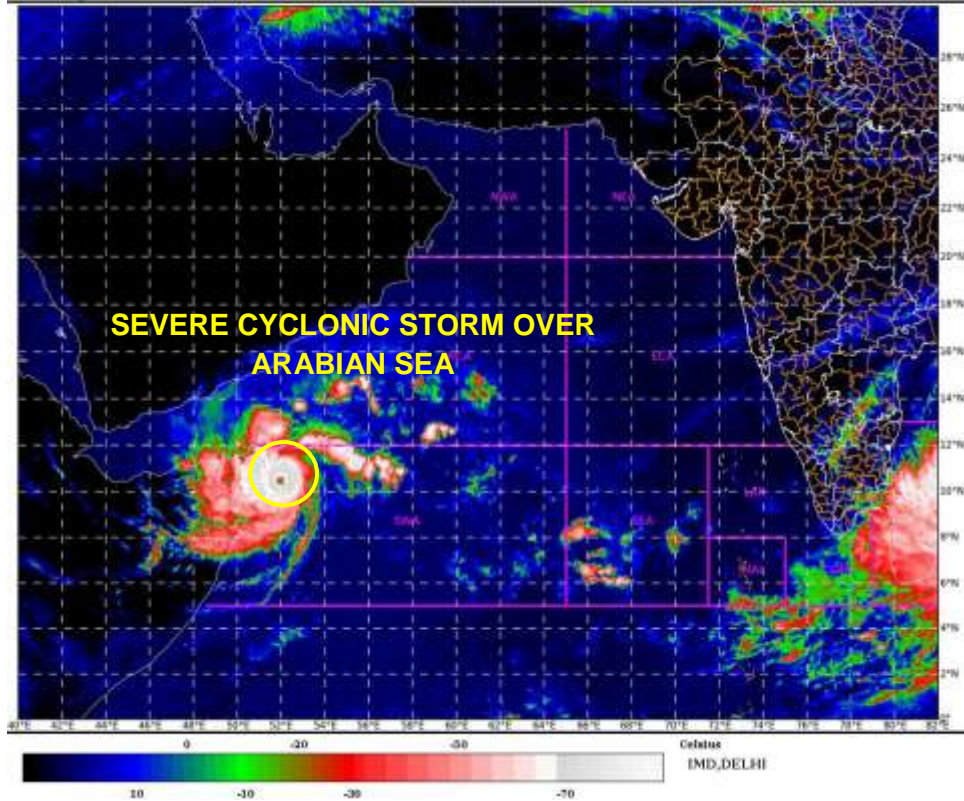
**Both the systems are under continuous surveillance and the concerned state governments are being informed regularly.**

**For details kindly visit [www.rsmcnewdelhi.imd.gov.in](http://www.rsmcnewdelhi.imd.gov.in), [www.mausam.imd.gov.in](http://www.mausam.imd.gov.in)**



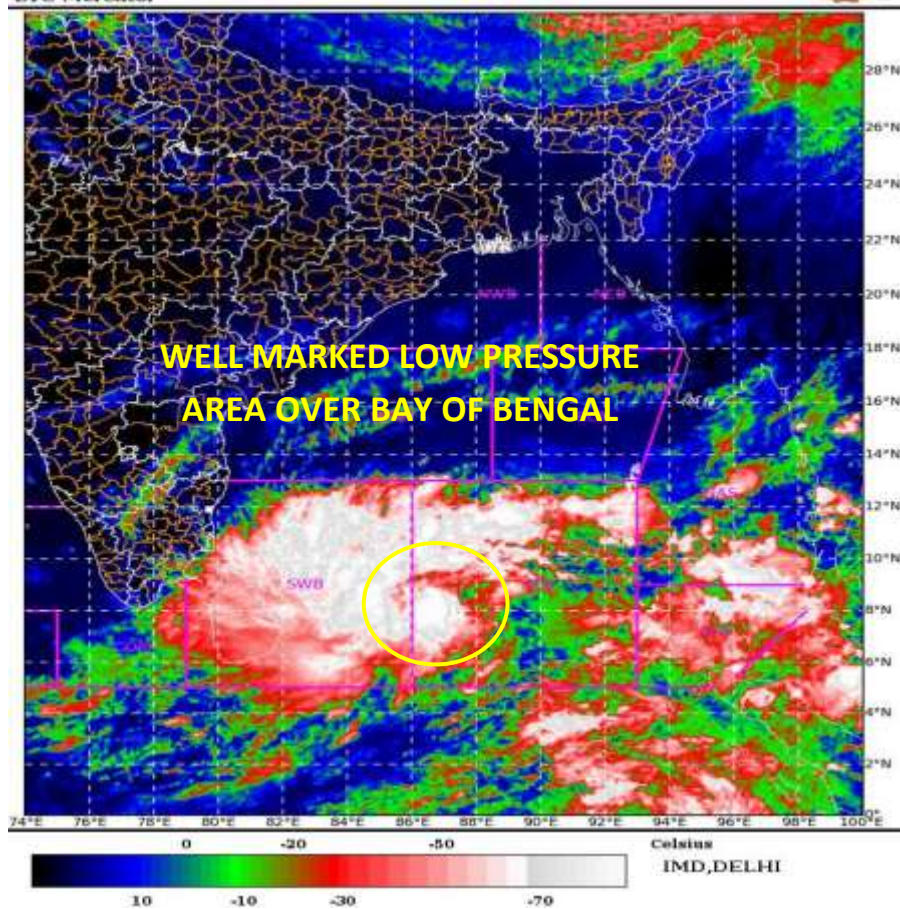
SAT : INSAT-3D IMG  
IMG\_TIR1\_TEMP 10.8 um  
ARABIAN SEA

22-11-2020(0800 to 0827) GMT  
22-11-2020(1330 to 1357) IST



SAT : INSAT-3D IMG  
IMG\_TIR1\_TEMP 10.8 um  
LIC Mercator

22-11-2020(0800 to 0827) GMT  
22-11-2020(1330 to 1357) IST



Contact: Cyclone Warning Division, Office of the Director General of Meteorology,  
India Meteorological Department, Ministry of Earth Sciences.

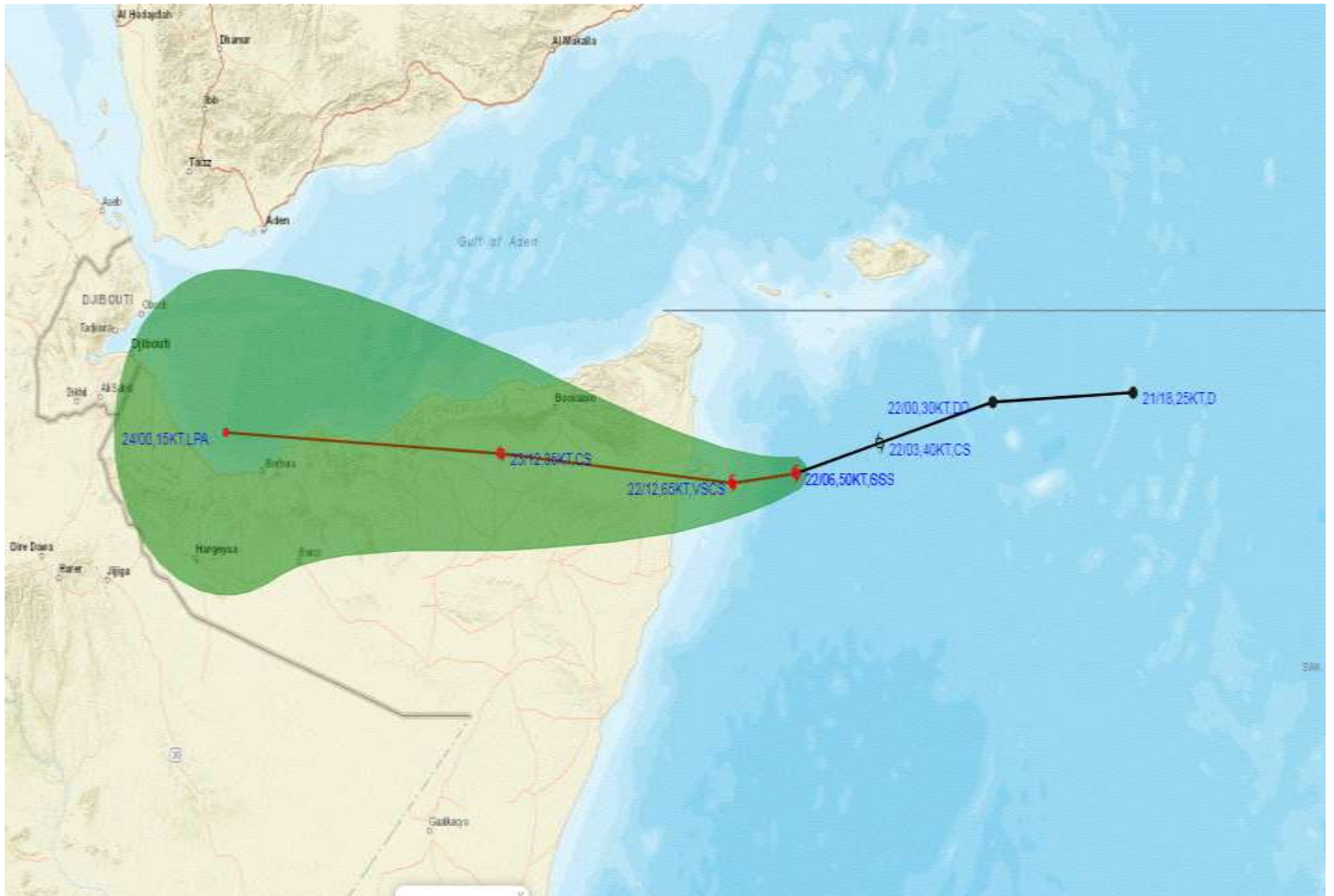
Phone: (91) 11-24652484, FAX: (91) 11-24643128, 24623220, E-mail: [cwdhq2008@gmail.com](mailto:cwdhq2008@gmail.com), Website: [rsmcnewdelhi.imd.gov.in](http://rsmcnewdelhi.imd.gov.in)

Spatial rainfall distribution: Isolated: <25%, A few: 26-50%, Many: 51-75%, Most: 76-100%

Rainfall amount (mm): Heavy rain: 64.5 – 115.5, Very heavy rain: 115.6 – 204.4, Extremely heavy rain: 204.5 or more.



# OBSERVED AND FORECAST TRACK ALONGWITH CONE OF UNCERTAINTY OF SEVERE CYCLONIC STORM GATI OVER SOUTHWEST ARABIAN SEA BASED ON 0600UTC OF 22<sup>nd</sup> Nov, 2020



**DATE/TIME IN UTC**  
**IST=UTC + 0530**  
**L: LOW PRESSURE AREA**  
**WML: WELL MARKED LOW PRESSURE AREA**  
**D: DEPRESSION (17-27 KT)**  
**DD: DEEP DEPRESSION (28-33 KT)**  
**CS: CYCLONIC STORM (34-47 KT)**  
**SCS: SEVERE CYCLONIC STORM (48-63KT)**  
**VSCS: VERY SEVERE CYCLONIC STORM (64-89 KT)**  
**ESCS: EXTREMELY SEVERE CYCLONIC STORM (90-119 KT)**  
**SuCS: SUPER CYCLONIC STORM ≥120 kt**

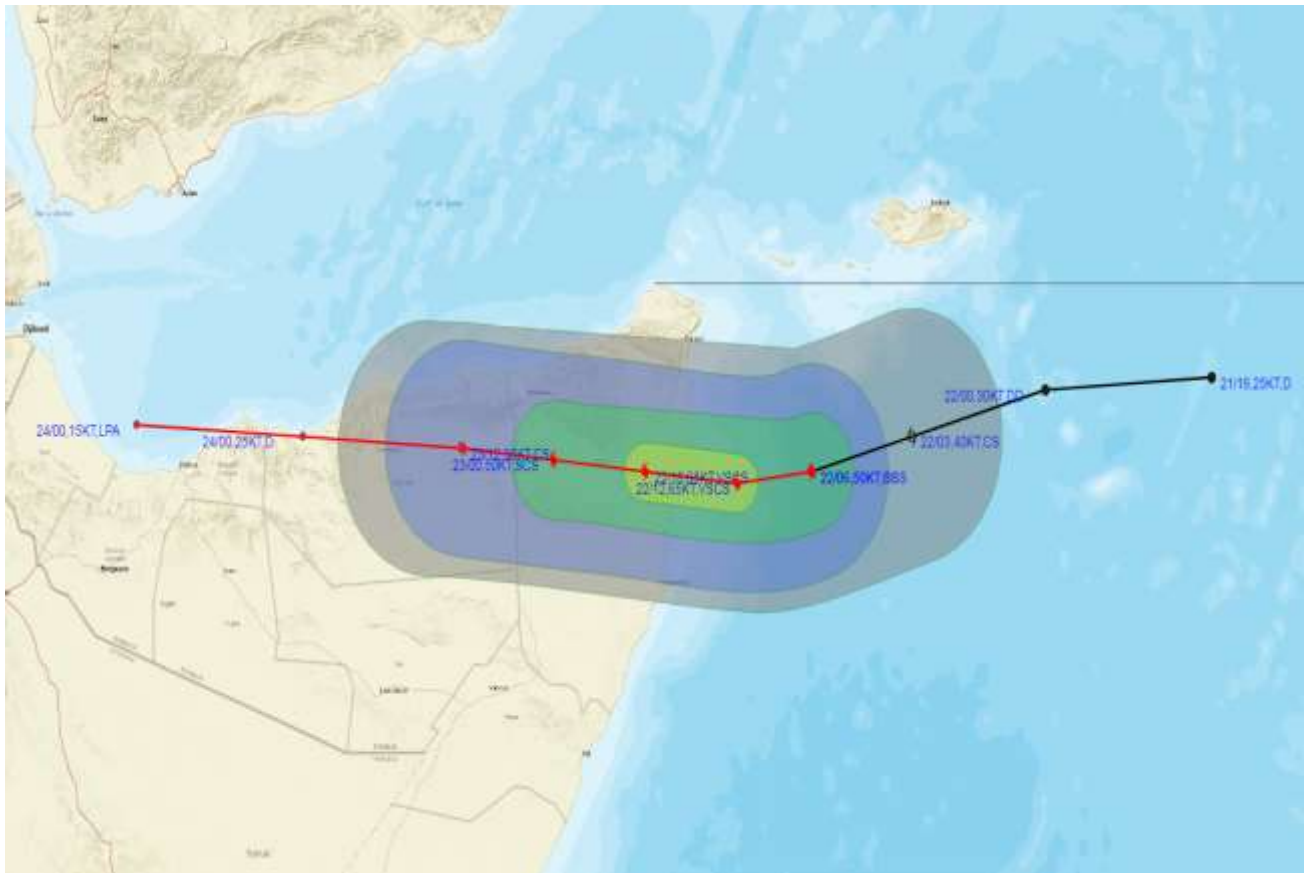
- LESS THAN 34 KT
- 34-47 KT
- ≥ 48 KT
- OBSERVED TRACK
- FORECAST TRACK
- CONE OF UNCERTAINTY

**Contact: Cyclone Warning Division, Office of the Director General of Meteorology,**  
**India Meteorological Department, Ministry of Earth Sciences.**  
**Phone: (91) 11-24652484, FAX: (91) 11-24643128, 24623220, E-mail: cwdhq2008@gmail.com, Website: [rsmcnwdelhi.ind.gov.in](http://rsmcnwdelhi.ind.gov.in)**  
**Spatial rainfall distribution: Isolated: <25%, A few: 26-50%, Many: 51-75%, Most: 76-100%**  
**Rainfall amount (mm): Heavy rain: 64.5 – 115.5, Very heavy rain: 115.6 – 204.4, Extremely heavy rain: 204.5 or more.**





## OBSERVED AND FORECAST TRACK OF DEPRESSION ALONGWITH QUADRANT WIND DISTRIBUTION OF SEVERE CYCLONIC STORM GATI OVER SOUTHWEST ARABIAN SEA



DATE/TIME IN UTC  
IST=UTC + 0530  
L: LOW PRESSURE AREA  
WML: WELL MARKED LOW PRESSURE AREA  
D: DEPRESSION (17-27 KT)  
DD: DEEP DEPRESSION (28-33 KT)  
CS: CYCLONIC STORM (34-47 KT)  
SCS: SEVERE CYCLONIC STORM (48-63KT)  
VSCS: VERY SEVERE CYCLONIC STORM (64-89 KT)  
ESCS: EXTREMELY SEVERE CYCLONIC STORM (90-119 KT)  
SuCS: SUPER CYCLONIC STORM  $\geq 120$  kt

● LESS THAN 34 KT  
⊙ 34-47 KT  
⦿  $\geq 48$  KT  
— OBSERVED TRACK  
— FORECAST TRACK  
▲ CONE OF UNCERTAINTY  
AREA OF MAXIMUM SUSTAINED WIND SPEED:  
■ 28-33 KT (52-61 KMPH)  
■ 34-49 KT (62-91 KMPH)  
■ 50-63 KT (92-117 KMPH)  
■  $\geq 64$  KT ( $\geq 118$  KMPH)

### IMPACT OVER THE SEA

MSW (knot/kmph)	Impact	Action
28-33 (52-61)	Very rough seas	Total suspension of fishing operations
34-49 (62-91)	High to very high seas	Total suspension of fishing operations
50-63 (92-117)	Very high seas	Total suspension of fishing operations
$\geq 64$ ( $\geq 118$ )	Phenomenal	Total suspension of fishing operations

Contact: Cyclone Warning Division, Office of the Director General of Meteorology,  
India Meteorological Department, Ministry of Earth Sciences.

Phone: (91) 11-24652484, FAX: (91) 11-24643128, 24623220, E-mail: [cwdhq2008@gmail.com](mailto:cwdhq2008@gmail.com), Website: [rsmcnwdelhi.imd.gov.in](http://rsmcnwdelhi.imd.gov.in)

Spatial rainfall distribution: Isolated: <25%, A few: 26-50%, Many: 51-75%, Most: 76-100%

Rainfall amount (mm): Heavy rain: 64.5 – 115.5, Very heavy rain: 115.6 – 204.4, Extremely heavy rain: 204.5 or more.