



Government of India
Ministry of Earth Sciences



India Meteorological Department

PRESS RELEASE - 4

Time of issue: 1240 hours IST

Dated: 03-12-2020

Sub: Cyclonic Storm 'Burevi' over southwest Bay of Bengal (Cyclone Warning for South Tamilnadu and South Kerala coasts: Orange Message)

Yesterday's deep depression over southwest Bay of Bengal moved west-northwestwards and intensified into the cyclonic storm "Burevi" over the same region in the same evening (1730 hrs IST of 1st December). Continuing to move west-northwestwards, it lay centered in the morning (0830 hrs IST) of today, the 02nd December 2020 over southwest Bay of Bengal near Lat. 8.6°N and Long. 83.0°E, about 200 km east of Trincomalee (Sri Lanka), 420 km east-southeast of Pamban (India) and 600 km nearly east-northeast of Kanniyakumari (India).

It is very likely to intensify further during next 12 hours. It is very likely to move west-northwestwards and cross Sri Lanka coast around latitude 9.0°N, to north of Trincomalee during evening/night of 2nd December as a Cyclonic Storm with a wind speed of 80-90 kmph gusting to 100 kmph.

It is very likely to move nearly west-northwestwards thereafter, emerge into Gulf of Mannar and adjoining Comorin area on 3rd December morning.

The Cyclonic Storm with wind speed of 70-80 gusting to 90 kmph would be centered very close to Pamban around noon of 3rd December. It would then move nearly west-southwestwards very close to coast slowly and cross south Tamilnadu coast between Kanniyakumari and Pamban during 3rd December night and 4th December early morning as a Cyclonic Storm with wind speed of 70-80 gusting to 90 kmph. Thus its impact on south Tamilnadu coastal districts is very likely to commence from 3rd December forenoon initially over Ramanathapuram district and gradually towards Kanniyakumari district. Forecast track and intensity are given below:

Date/Time(IST)	Position (Lat. °N/ long. °E)	Maximum sustained surface wind speed (Kmph)	Category of cyclonic disturbance
02.12.20/0830	8.6/83.0	75-85 gusting to 95	Cyclonic Storm
02.12.20/1130	8.8/82.5	75-85 gusting to 95	Cyclonic Storm
02.12.20/1730	9.0/81.3	80-90 gusting to 100	Cyclonic Storm
02.12.20/2330	9.1/80.7	80-90 gusting to 100	Cyclonic Storm
03.12.20/0530	9.2/80.2	70-80 gusting to 90	Cyclonic Storm
03.12.20/1730	9.1/79.2	70-80 gusting to 90	Cyclonic Storm
04.12.20/0530	8.9/78.4	70-80 gusting to 90	Cyclonic Storm
04.12.20/1730	8.5/77.4	65-75 gusting to 85	Cyclonic Storm
05.12.20/0530	8.1/76.4	55-65 gusting to 75	Deep Depression

Warnings:

(i) Rainfall

- Heavy to very heavy rainfall at a few places with isolated Extremely heavy falls very likely over south Tamilnadu (Ramanathapuram, Thoothukudi, Tirunelveli, Kanniyakumari, Tenkasi and Sivagangai districts) on 2nd & 3rd December, 2020; over south Kerala (Thiruvananthapuram, Kollam, Pathanamthitta and Alappuzah) on 3rd

Contact: Cyclone Warning Division, Office of the Director General of Meteorology, India Meteorological Department, Ministry of Earth Sciences.

Phone: (91) 11-24652484, FAX: (91) 11-24643128, 24623220, E-mail: cwdhq2008@gmail.com, Website: rsmcnwdelhi.imd.gov.in

Spatial rainfall distribution: Isolated: <25%, A few: 26-50%, Many: 51-75%, Most: 76-100%

Rainfall amount (mm): Heavy rain: 64.5 – 115.5, Very heavy rain: 115.6 – 204.4, Extremely heavy rain: 204.5 or more.

December and isolated heavy to very heavy rainfall likely over south Tamilnadu on 4th December 2020 and south Kerala on 2nd & 4th December, 2020.

- Heavy to very heavy rainfall at isolated places very likely over north Tamilnadu, Puducherry, Mahe & Karaikal and north Kerala on 3rd December, isolated heavy rainfall on 2nd & 4th December.
- Heavy rainfall at isolated places very likely over south Coastal Andhra Pradesh and Lakshadweep on 3rd & 04th December.

Sub-Divisions	02 Dec 2020*	03 Dec 2020*	04 Dec 2020*
South Tamilnadu	Rainfall at most places with heavy to very heavy rainfall at few places and extremely heavy fall at isolated places	Rainfall at most places with heavy to very heavy rainfall at few places and extremely heavy fall at isolated places	Rainfall at many places with heavy to very heavy rainfall at isolated places
North Tamilnadu, Puducherry & Karaikal	Rainfall at many places with heavy rainfall at isolated places	Rainfall at many places with heavy to very heavy rainfall at isolated places	Rainfall at many places with heavy fall at isolated places
South Kerala	Rainfall at most places with heavy to very heavy rainfall at isolated places	Rainfall at most places with heavy to very heavy rainfall at few places and extremely heavy fall at isolated places	Rainfall at many places with heavy to very heavy rainfall at isolated places
North Kerala & Mahe	Rainfall at many places with heavy rainfall at isolated places	Rainfall at most places with heavy to very heavy rainfall at isolated places	Rainfall at a few places with heavy fall at isolated places
South Coastal Andhra Pradesh	Rainfall at a few places	Rainfall at a few places with heavy rainfall at isolated places	Rainfall at a few places with heavy rainfall at isolated places
Lakshadweep	Rainfall at a few places	Rainfall at many places with heavy falls at isolated places	Rainfall at most places with heavy to very falls at isolated places

(ii) Wind warning

- Gale wind speed reaching 75-85 kmph gusting to 95 kmph prevails over southwest Bay of Bengal and along & off Sri Lanka coast. It is very likely to increase becoming 80-90 kmph gusting to 100 kmph from afternoon for subsequent 12 hours. It will gradually decrease thereafter.
- Squally wind speed reaching 45-55 kmph gusting to 65 kmph very likely over Comorin Area, Gulf of Mannar and along and off south Tamilnadu coast (Ramanathapuram,

Contact: Cyclone Warning Division, Office of the Director General of Meteorology, India Meteorological Department, Ministry of Earth Sciences.

Phone: (91) 11-24652484, FAX: (91) 11-24643128, 24623220, E-mail: cwdhq2008@gmail.com, Website: rsmcnwdelhi.imd.gov.in

Spatial rainfall distribution: Isolated: <25%, A few: 26-50%, Many: 51-75%, Most: 76-100%

Rainfall amount (mm): Heavy rain: 64.5 – 115.5, Very heavy rain: 115.6 – 204.4, Extremely heavy rain: 204.5 or more.

Thoothukudi, Tirunelveli and Kanniyakumari districts) and south Kerala coast (Thiruvananthapuram, Kollam, Pathanamthitta and Alappuzah districts). It will gradually increase becoming 55-65 kmph gusting to 75 kmph from 2nd December evening and 70-80 kmph gusting to 90 kmph from 3rd December forenoon for subsequent 24 hours and decrease thereafter.

- Squally wind speed reaching 45-55 kmph gusting to 65 kmph very likely over Lakshadweep-Maldives area and adjoining southeast Arabian Sea from 3rd December morning for next 48 hours.

(iii) Storm Surge:

- Storm surge of about 1.0 m height above astronomical tide is very likely to inundate low lying areas of south coastal Tamilnadu (Ramanathapuram, Thoothukudi, Tirunelveli and Kanniyakumari districts) during the time of landfall.

(iii) Sea condition

- Sea conditions is very rough to high over southwest Bay of Bengal and along & off east Sri Lanka coast and the same will continue till mid-night of 3rd December morning and gradually improve thereafter.
- It will be rough to very rough over Comorin Area, Gulf of Mannar, along & off south Tamilnadu-Kerala and west Sri Lanka coast on 2nd and very rough to high on 3rd and 4th December.
- Sea condition will be rough to very rough over Lakshadweep-Maldives area and adjoining southeast Arabian Sea during 3rd – 5th December.

(iv) Damage expected over south Tamilnadu (Kanniyakumari, Tirunelveli, Thoothukudi and Ramanathapuram districts) and south Kerala (Thiruvananthapuram, Kollam, Pathanamthitta and Alappuzah districts)

- Damage to thatched huts.
- Minor damage to power and communication lines due to breaking of branches.
- Major damage to Kutcha and minor damage to Pucca roads.
- Some damage to paddy crops, banana, papaya trees and orchards.
- Sea water inundation in low lying areas after erosion of Kutcha embankments.

(v) Fishermen warning and Action suggested

- Total suspension of fishing operation during 2nd to 5th December over the areas as mentioned below.
- Fishermen are advised not to venture into southwest Bay of Bengal and along & off east Sri Lanka coast from 2nd to 3rd December; Comorin Area, Gulf of Mannar and south Tamilnadu-Kerala and west Sri Lanka coasts from 2nd to 4th December, over Lakshadweep-Maldives area & adjoining southeast Arabian Sea from 3rd to 5th December.

The system is under continuous surveillance and the concerned state governments are being informed regularly.

For details kindly visit www.rsmcnewdelhi.imd.gov.in, www.mausam.imd.gov.in

Annexure-1

Chief amount of past 24 hours realised rainfall ending at 0830 hours IST of today, the 3rd December, 2020

Tamilnadu, Puducherry & Karaikal

Vedaranyam (dist Nagapattinam) - 20,

Karaikal (dist Karaikal)- 16,

Thalaignayer (dist Nagapattinam), Tirupoondi (dist Nagapattinam) -15 each,

Nagapattinam (dist Nagapattinam)- 14,

Thiruthuraipoondi (dist Tiruvarur) -13,

Mayiladuthurai (dist Nagapattinam) , Rameswaram (dist Ramanathapuram)- 12 each,

Mudukulatur (dist Ramanathapuram) - 11,

Sirkali (dist Nagapattinam), Kodavasal (dist Tiruvarur) , Adirampatnam (dist Thanjavur) , Manjalaru (dist Thanjavur) - 10 each,

Tiruvarur (dist Tiruvarur) ,Aduthurai (dist Thanjavur) , Tambaram (dist Chengalpattu) , Pattukottai (dist Thanjavur) - 9 each,

Nannilam (dist Tiruvarur), Marakkanam (dist Villupuram), Pamban (dist Ramanathapuram), Thiruidaimaruthur (dist Thanjavur), Thirukalukundram (dist Chengalpattu), Pondicherry (dist Puducherry), Valangaiman (dist Tiruvarur) -8 each,

Manalmedu (dist Nagapattinam), Kollidam (dist Nagapattinam), Kelambakkam (dist Chengalpattu), K.M.koil (dist Cuddalore), Vanur (dist Villupuram), Mannargudi (dist Tiruvarur), Taramani (dist Chennai), Madukkur (dist Thanjavur), Parangipettai (dist Cuddalore), Ayyampettai (dist Thanjavur), ThanjaiPapanasam (dist Thanjavur), Cuddalore (dist Cuddalore), Needamangalam (dist Tiruvarur) -7 each,

Agaram Seegoor (dist Perambalur) , Tindivanam (dist Villupuram) , Mahabalipuram (dist Chengalpattu) , Maduranthagam (dist Chengalpattu) , Thamaraipakkam (dist Tiruvallur) , Thanjavur (dist Thanjavur) , Kumbakonam (dist Thanjavur), Pandavaiyar Head (dist Tiruvarur) , Thirupporur (dist Chengalpattu) , Orthanad (dist Thanjavur) , Mandapam (dist Ramanathapuram) , Mylam (dist Villupuram) , Ponneri (dist Tiruvallur) , Peravurani (dist Thanjavur) , Bhuvanagiri (dist Cuddalore) , Manamelkudi (dist Pudukkottai) , Mimisal (dist Pudukkottai) , Thanjavur (dist Thanjavur) - 6 each,

Labbaikudikadu (dist Perambalur) , Vallam (dist Thanjavur) , Tarangambadi (dist Nagapattinam) , Cheyyur (dist Chengalpattu) , Hindusthan University (dist Chengalpattu) , Kurinjipadi (dist Cuddalore) , Sethiyathope (dist Cuddalore) , Perambalur (dist Perambalur) , Perungalur (dist

Contact: Cyclone Warning Division, Office of the Director General of Meteorology,

India Meteorological Department, Ministry of Earth Sciences.

Phone: (91) 11-24652484, FAX: (91) 11-24643128, 24623220, E-mail: cwdhq2008@gmail.com, Website: rsmcnewdelhi.imd.gov.in

Spatial rainfall distribution: Isolated: <25%, A few: 26-50%, Many: 51-75%, Most: 76-100%

Rainfall amount (mm): Heavy rain: 64.5 – 115.5, Very heavy rain: 115.6 – 204.4, Extremely heavy rain: 204.5 or more.

Pudukkottai) , Chidambaram (dist Cuddalore) , Chennai Ap (dist Chennai) , Arantangi (dist Pudukkottai) , Pelandurai (dist Cuddalore) , Panruti (dist Cuddalore) - 5 each ,

Tiruttani (dist Tiruvallur) , Anna University (dist Chennai) , Eraiyur (dist Perambalur) , Poondi (dist Tiruvallur) , Anna Uty (dist Chennai) , Thirumanur (dist Ariyalur) , Vilupuram (dist Villupuram) , Thuvakudilmti (dist Trichy) , Tiruttani (dist Tiruvallur) , Muthupet (dist Tiruvarur) , Budalur (dist Thanjavur) , Keeranur (dist Pudukkottai) , Srimushnam (dist Cuddalore) , Tondi (dist Ramanathapuram) , Vepur (dist Cuddalore) , Jayankondam (dist Ariyalur) , Vattanam (dist Ramanathapuram) , Puzhal (dist Tiruvallur) , Dgp Office (dist Chennai) , Alandur (dist Chennai) , Tiruvaiyaru (dist Thanjavur) , Karambakudi (dist Pudukkottai) , Avudayarkoil (dist Pudukkottai) , Arakonam (dist Ranipet) , Chembarambakkam (dist Tiruvallur) , Ulundurpet (dist Kallakurichi) , Vridhachalam (dist Cuddalore) , Gingee (dist Villupuram) , Chengalpattu (dist Chengalpattu) , Ambathur (dist Tiruvallur) , Tiruvallur (dist Tiruvallur) -4 each,

Sivaganga (dist Sivaganga), Ennore (dist Tiruvallur), Ariyalur (dist Ariyalur), Ilayangudi (dist Sivaganga) , Tiruvadana (dist Ramanathapuram) , Chennai(n) (dist Chennai) , Uthukottai (dist Tiruvallur) , Ramanathapuram (dist Ramanathapuram) , Alangudi (dist Pudukkottai) , Trp Town (dist Trichy) , Sendurai (dist Ariyalur) , Tozhudur (dist Cuddalore) , Viralimalai (dist Pudukkottai) , TrpAp (dist Trichy) , Mgr Nagar (dist Chennai) , Samayapuram (dist Trichy) , Perambur (dist Chennai) , Paramakudi (dist Ramanathapuram) , Palavidithi (dist Karur) , Pudukkottai (dist Pudukkottai) , Veppanthattai (dist Perambalur) , Tirukattupalli (dist Thanjavur) , Vandavasi (dist Tiruvannamalai) , Uthiramerur (dist Kancheepuram) , Pallipattu (dist Tiruvallur) , Thirukoilur (dist Kallakurichi) , Tirupuvanam (dist Sivaganga) , Pullambadi (dist Trichy) , Grand Anaicut (dist Thanjavur) , Chettikulam (dist Perambalur) , Vembakkam (dist Tiruvannamalai) , Lalgudi (dist Trichy) , Thiruvalangadu (dist Tiruvallur) , Thogamalai (dist Karur) , Tirukoilur (dist Kallakurichi) , Ponnamaravathi (dist Pudukkottai) , Illuppur (dist Pudukkottai) , Koratur (dist Tiruvallur) , Gandarvakottai (dist Pudukkottai) , R.S.mangalam (dist Ramanathapuram) , Chembarabakkam (dist Tiruvallur) , Annavasal (dist Pudukkottai) , Thathiengrpet (dist Trichy) , Poonamallee (dist Tiruvallur) , Marungapuri (dist Trichy) , Kodaikanal (dist Dindigul) -3 each ,

Keelpennathur (dist Tiruvannamalai) , Padalur (dist Perambalur) , Sholavandan (dist Madurai) , Cholavaram (dist Tiruvallur) , Ponmalai (dist Trichy) , Manamadurai (dist Sivaganga) , Red Hills (dist Tiruvallur) , Kolapakkam (dist Chengalpattu) , Veeraganoor (dist Salem) , Ponnai Dam (dist Vellore) , Kamudhi (dist Ramanathapuram) , Kaveripakkam (dist Ranipet) , Devakottai (dist Sivaganga) , R.K.pet (dist Tiruvallur) , Dindigul (dist Dindigul) , Karaikudi (dist Sivaganga) , Melur (dist Madurai) , Kadavur (dist Karur) , ValinokkamArg (dist Ramanathapuram) , Tirumayam (dist Pudukkottai) , Kadaladi (dist Ramanathapuram) , Arcot (dist Ranipet) , Vedasandur (dist Dindigul) , Chittampatti (dist Madurai) , Madurai South (dist Madurai) , Ammundi (dist Vellore) , VathalaiAnaicut (dist Trichy) , Sholinganallur (dist Chennai) , Thandampettai (dist Tiruvannamalai) , Katpadi (dist Vellore) , Arani (dist Tiruvannamalai) , Valinokkam (dist Ramanathapuram) , Kancheepuram (dist Kancheepuram) , Vellore (dist Vellore) , Tirupathur (dist Sivaganga) , Gummidipoondi (dist Tiruvallur) , Wallajah (dist Ranipet) , Pulipatti (dist Madurai) , Musiri (dist Trichy) , Cheyyar (dist Tiruvannamalai) , Kariyapatti (dist Virudhunagar) -2 each ,

Manapparai (dist Trichy) , Panchapatti (dist Karur) , Thammampatty (dist Salem) , Thuraiyur (dist Trichy) , Sriperumbudur (dist Kancheepuram) , Usilampatti (dist Madurai) , Kovilpatti (dist Trichy) , Tallakulam (dist Madurai) , Sholingur (dist Ranipet) , Aruppukottai (dist Virudhunagar) ,

Contact: Cyclone Warning Division, Office of the Director General of Meteorology,

India Meteorological Department, Ministry of Earth Sciences.

Phone: (91) 11-24652484, FAX: (91) 11-24643128, 24623220, E-mail: cwdhq2008@gmail.com, Website: rsmcnewdelhi.imd.gov.in

Spatial rainfall distribution: Isolated: <25%, A few: 26-50%, Many: 51-75%, Most: 76-100%

Rainfall amount (mm): Heavy rain: 64.5 – 115.5, Very heavy rain: 115.6 – 204.4, Extremely heavy rain: 204.5 or more.

Airport Madurai (dist Madurai) , Sivakasi (dist Virudhunagar) , Kovilankulam (dist Virudhunagar) , Vaippar (dist Toothukudi) , Natham (dist Dindigul) , Sankarapuram (dist Kallakurichi) , Virinjipuram (dist Vellore) , Sathanur Dam (dist Tiruvannamalai) , Kallakurichi (dist Kallakurichi) , Walajabad (dist Kancheepuram) , Andipatti (dist Theni) , Surangudi (dist Toothukudi) , Kulithalai (dist Karur) , Namakkal (dist Namakkal) , Gudiyatham (dist Vellore) , Viraganur Dam (dist Madurai) , Arimalam (dist Pudukkottai) , Mayanur (dist Karur) , Virudhunagar (dist Virudhunagar) , Attur (dist Salem) , Tiruvannamalai (dist Tiruvannamalai) , Kamatchipuram (dist Dindigul) , Thiruchuzhi (dist Virudhunagar) , Melalathur (dist Vellore) , Tirumangalam (dist Madurai) , Vadapudupattu (dist Tirupathur) , Kallikudi (dist Madurai) , Krishnarayapuram (dist Karur) , Periyakulam (dist Theni) -1 each.

**Contact: Cyclone Warning Division, Office of the Director General of Meteorology,
India Meteorological Department, Ministry of Earth Sciences.**

Phone: (91) 11-24652484, FAX: (91) 11-24643128, 24623220, E-mail: cwdhq2008@gmail.com, Website: rsmcnewdelhi.imd.gov.in

Spatial rainfall distribution: Isolated: <25%, A few: 26-50%, Many: 51-75%, Most: 76-100%

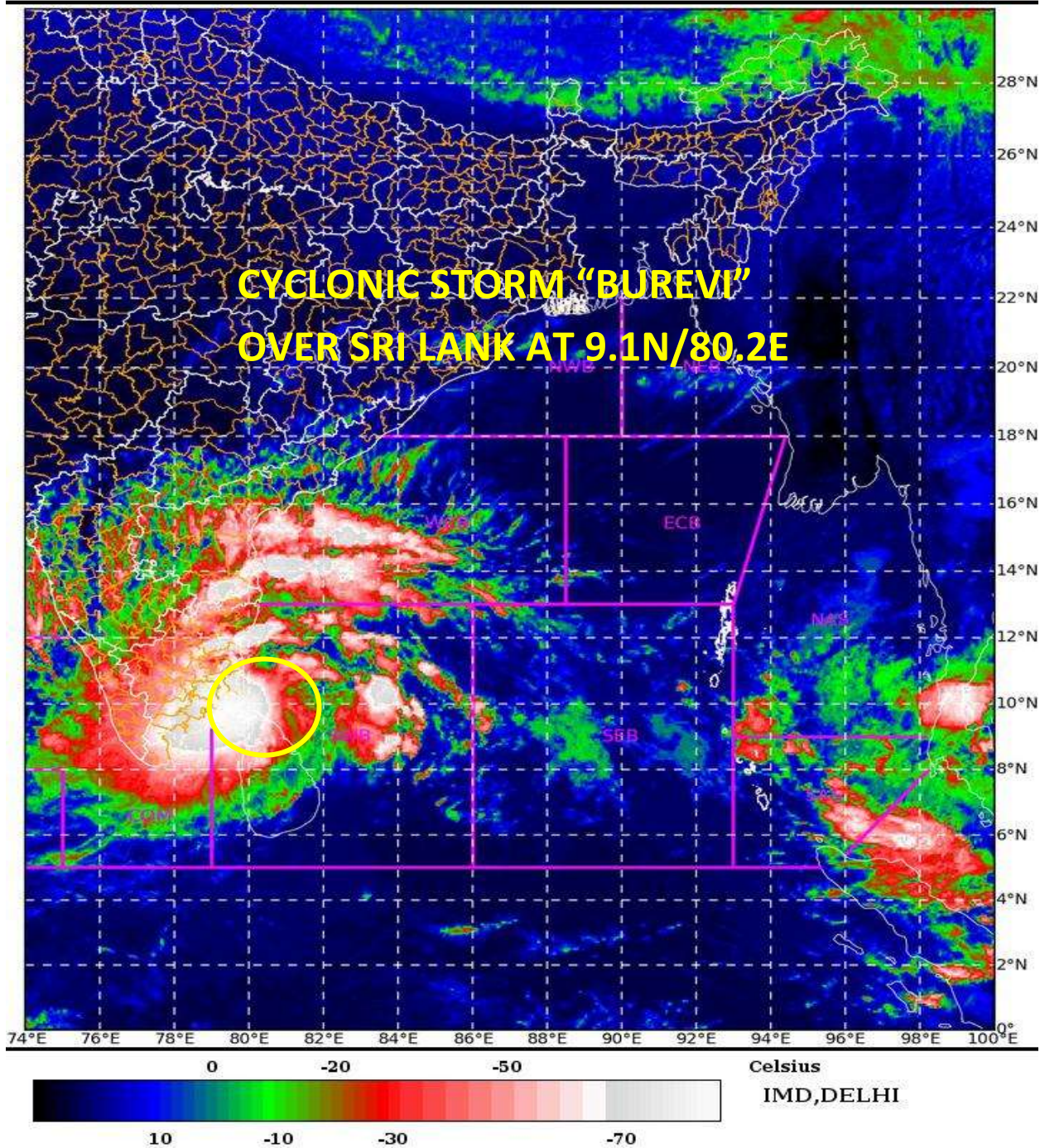
Rainfall amount (mm): Heavy rain: 64.5 – 115.5, Very heavy rain: 115.6 – 204.4, Extremely heavy rain: 204.5 or more.

SAT : INSAT-3D IMG 03-12-2020/(0400 to 0427) GMT

IMG_TIR1_TEMP 10.8 um 03-12-2020/(0930 to 0957) IST



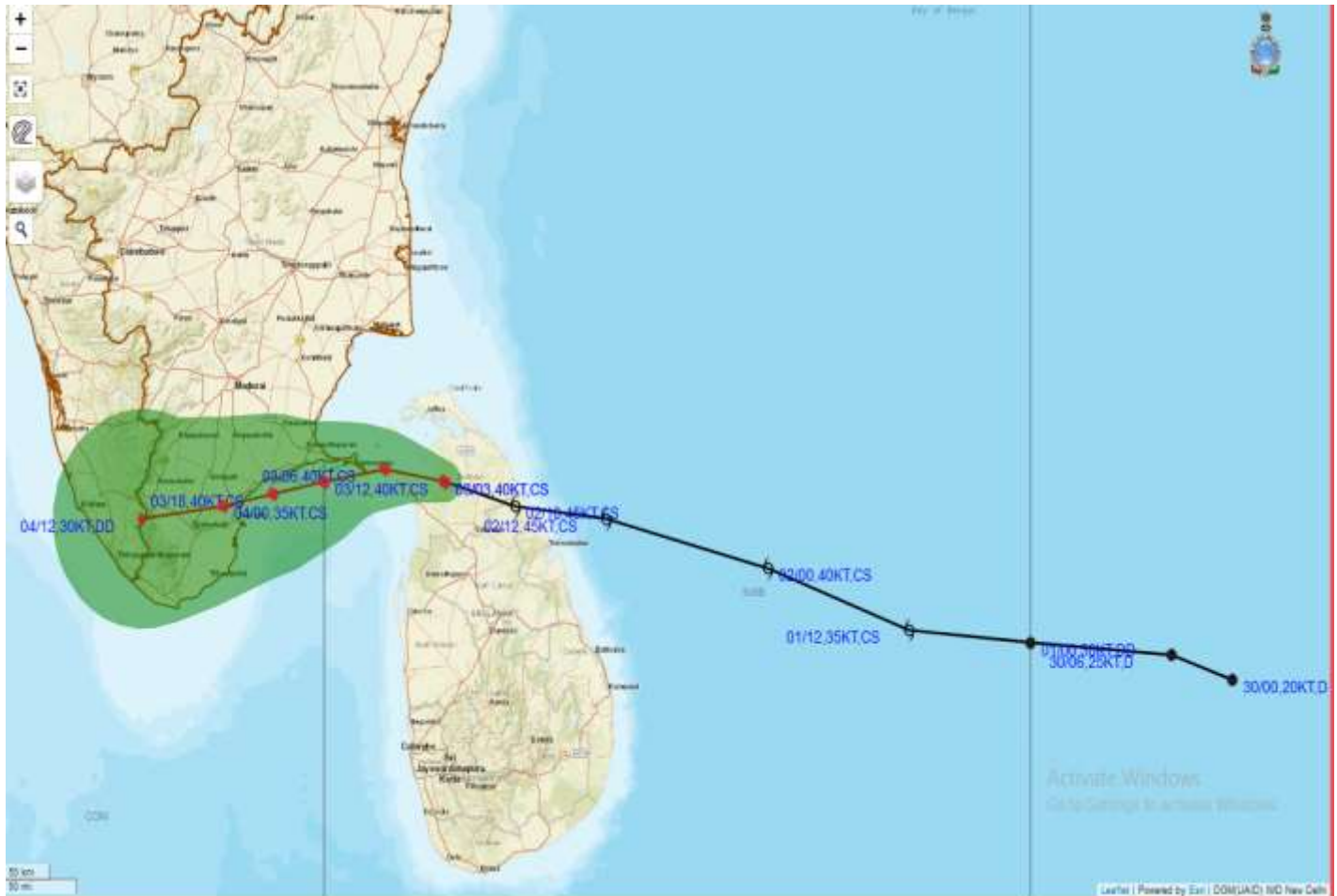
L1C Mercator



Contact: Cyclone Warning Division, Office of the Director General of Meteorology,
India Meteorological Department, Ministry of Earth Sciences.
Phone: (91) 11-24652484, FAX: (91) 11-24643128, 24623220, E-mail: cwdhq2008@gmail.com, Website: rsmcnwdelhi.imd.gov.in
Spatial rainfall distribution: Isolated: <25%, A few: 26-50%, Many: 51-75%, Most: 76-100%
Rainfall amount (mm): Heavy rain: 64.5 – 115.5, Very heavy rain: 115.6 – 204.4, Extremely heavy rain: 204.5 or more.



OBSERVED AND FORECAST TRACK ALONGWITH CONE OF UNCERTAINTY OF CYCLONIC STORM "BUREVI" OVER SRI LANKA BASED ON 0300 UTC OF 3rd DECEMBER, 2020.



DATE/TIME IN UTC
IST=UTC + 0530
L: LOW PRESSURE AREA
WML: WELL MARKED LOW PRESSURE AREA
D: DEPRESSION (17-27 KT)
DD: DEEP DEPRESSION (28-33 KT)
CS: CYCLONIC STORM (34-47 KT)
SCS: SEVERE CYCLONIC STORM (48-63KT)
VSCS: VERY SEVERE CYCLONIC STORM (64-89 KT)
ESCS: EXTREMELY SEVERE CYCLONIC STORM (90-119 KT)
SuCS: SUPER CYCLONIC STORM (\geq 120 KT)

- LESS THAN 34 KT
- 34-47 KT
- \geq 48 KT
- OBSERVED TRACK
- FORECAST TRACK
- CONE OF UNCERTAINTY

Contact: Cyclone Warning Division, Office of the Director General of Meteorology,
 India Meteorological Department, Ministry of Earth Sciences.

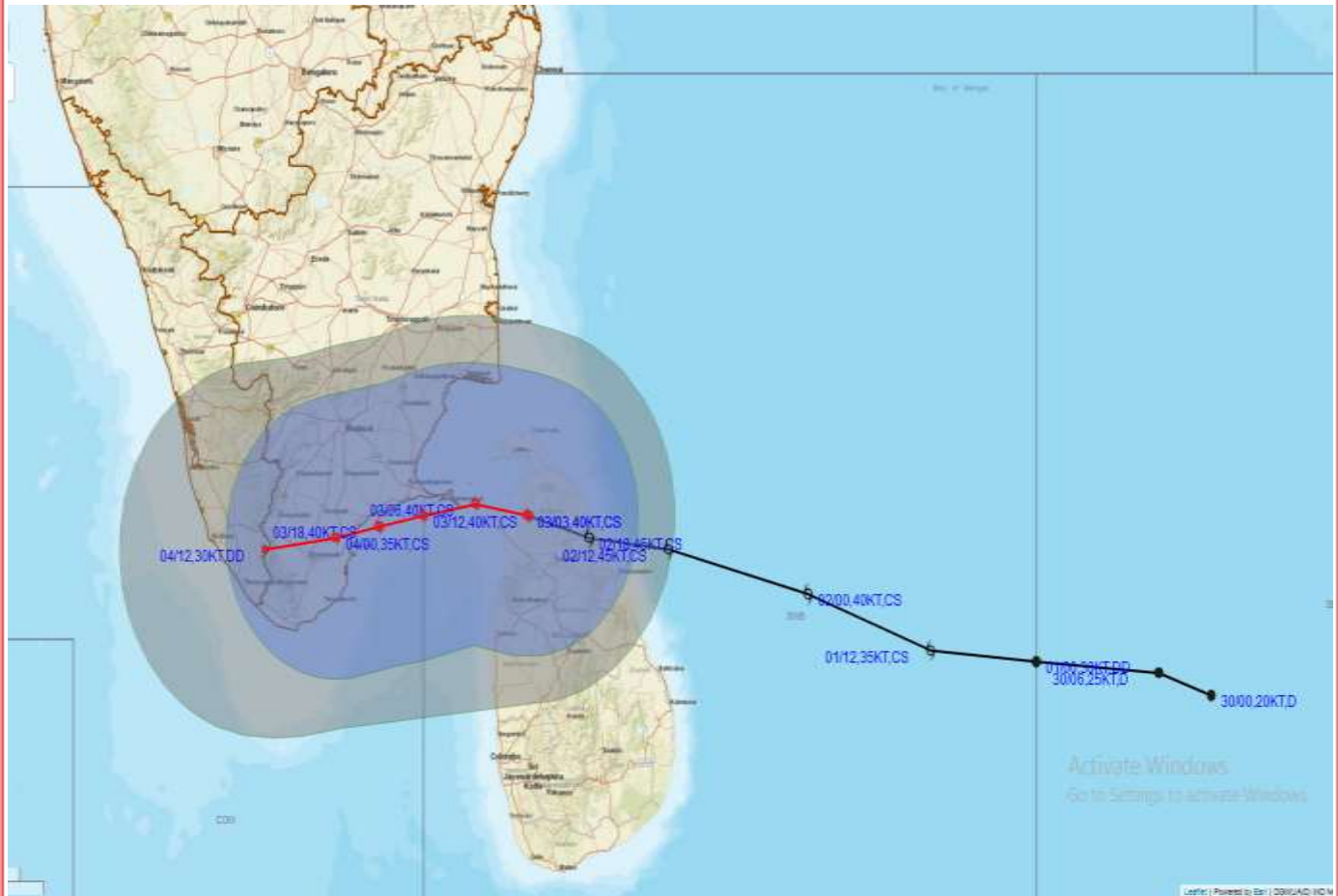
Phone: (91) 11-24652484, FAX: (91) 11-24643128, 24623220, E-mail: cwdhq2008@gmail.com, Website: rsmcnnewdelhi.imd.gov.in

Spatial rainfall distribution: Isolated: <25%, A few: 26-50%, Many: 51-75%, Most: 76-100%

Rainfall amount (mm): Heavy rain: 64.5 – 115.5, Very heavy rain: 115.6 – 204.4, Extremely heavy rain: 204.5 or more.



OBSERVED AND FORECAST TRACK ALONGWITH QUADRANT WIND DISTRIBUTION OF CYCLONIC STORM "BUREVI" OVER SRI LANKA BASED ON 0300 UTC OF 3rd DECEMBER, 2020.



DATE/TIME IN UTC

IST=UTC + 0530

L: LOW PRESSURE AREA

WML: WELL MARKED LOW PRESSURE AREA

D: DEPRESSION (17-27 KT)

DD: DEEP DEPRESSION (28-33 KT)

CS: CYCLONIC STORM (34-47 KT)

SCS: SEVERE CYCLONIC STORM (48-63KT)

VSCS: VERY SEVERE CYCLONIC STORM (64-89 KT)

ESCS: EXTREMELY SEVERE CYCLONIC STORM (90-119 KT)

SuCS: SUPER CYCLONIC STORM (≥ 120 KT)

- LESS THAN 34 KT
- 34-47 KT
- ⦿ ≥ 48 KT
- OBSERVED TRACK
- FORECAST TRACK
- ▲ CONE OF UNCERTAINTY
- AREA OF MAXIMUM SUSTAINED WIND SPEED:
- 28-33 KT (52-61 KMPH)
- 34-49 KT (62-91 KMPH)
- 50-63 KT (92-117 KMPH)
- ≥ 64 KT (≥ 118 KMPH)

IMPACT OVER THE SEA

MSW (knot/kmph)	Impact	Action
28-33 (52-61)	Very rough seas	Total suspension of fishing operations
34-49 (62-91)	High to very high seas	Total suspension of fishing operations
50-63 (92-117)	Very high seas	Total suspension of fishing operations
≥ 64 (≥ 118)	Phenomenal	Total suspension of fishing operations

Contact: Cyclone Warning Division, Office of the Director General of Meteorology,

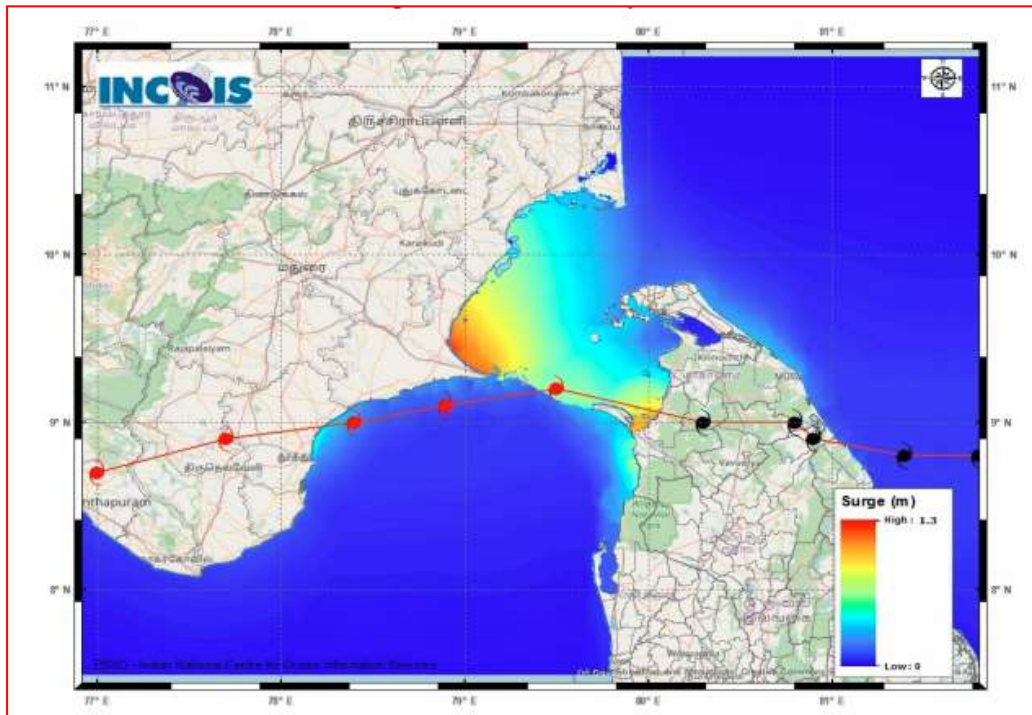
India Meteorological Department, Ministry of Earth Sciences.

Phone: (91) 11-24652484, FAX: (91) 11-24643128, 24623220, E-mail: cwdhq2008@gmail.com, Website: rsmcnwdelhi.imd.gov.in

Spatial rainfall distribution: Isolated: <25%, A few: 26-50%, Many: 51-75%, Most: 76-100%

Rainfall amount (mm): Heavy rain: 64.5 – 115.5, Very heavy rain: 115.6 – 204.4, Extremely heavy rain: 204.5 or more.

Storm Surge Forecast by INCOIS Model based on 0000 UTC of 3rd December



STORM SURGE HEIGHT INFORMATION:

* The below listed surge heights are over and above astronomical tide.

MANDAL/TALUK	DISTRICT	STATE / UNION TERRITORY	NEAREST PLACE OF HABITATION	STORM SURGE (m)	EXPECTED INUNDATION EXTENT (km)
Tiruvadanai	Ramanathapuram	Tamil Nadu	Marungur	0.8-1.3	Upto 0.69
Ramanathapuram	Ramanathapuram	Tamil Nadu	Pathanendal	0.2-1.2	Upto 0.47
Arantangi	Pudukkottai	Tamil Nadu	Enadi	0.4-0.7	Upto 0.39
Peravurani	Thanjavur	Tamil Nadu	Sendalaiivayal	0.6-0.6	Nil
Ottapidaram	Thoothukkudi	Tamil Nadu	Pattanamarudur	0.5-0.6	Upto 0.14
Pattukkottai	Thanjavur	Tamil Nadu	Palanjur	0.4-0.5	Upto 0.18
Tuticorin	Thoothukkudi	Tamil Nadu	Mappilaiurani	0.2-0.5	Upto 1.9
Vilattikulam	Thoothukkudi	Tamil Nadu	Vaippar	0.4-0.5	Nil

Contact: Cyclone Warning Division, Office of the Director General of Meteorology, India Meteorological Department, Ministry of Earth Sciences.

Phone: (91) 11-24652484, FAX: (91) 11-24643128, 24623220, E-mail: cwdhq2008@gmail.com, Website: rsmcnwdelhi.imd.gov.in

Spatial rainfall distribution: Isolated: <25%, A few: 26-50%, Many: 51-75%, Most: 76-100%

Rainfall amount (mm): Heavy rain: 64.5 – 115.5, Very heavy rain: 115.6 – 204.4, Extremely heavy rain: 204.5 or more.