



Government of India
Ministry of Earth Sciences
Earth System Science Organisation



Earth System Science Organisation
India Meteorological Department

PRESS RELEASE-3

Time of issue: 1230 hours IST

Dated: 24-09-2019

Sub:Cyclonic Storm “Hikaa” intensified into a very severe cyclonic storm over northwest and adjoining westcentral Arabian Sea

Yesterday’s cyclonic storm “HIKAA” over northeast and adjoining eastcentral Arabian Sea intensified into a severe cyclonic storm in the same evening (1430 hours IST) over northeast and adjoining northwest & central Arabian Sea. Moving nearly westwards, it further intensified into a very severe cyclonic storm in the early morning (0530 hours IST) of today, the 24th September, 2019. Continuing to move nearly westwards, it lay centred in the morning (0830 hours IST) of today, the 24th September over northwest and adjoining westcentral Arabian Sea near latitude 20.1°N and longitude 60.3°E, about 880 km west-southwest of Karachi (Pakistan), 160 km east-southeast of Masirah (Oman) and about 280 km east-northeast of Duqm (Oman).

It is likely to maintain its intensity of very severe cyclonic storm for next six hours and weaken gradually thereafter. It is very likely to move west-southwestwards and cross Oman coast between lat. 19. 5°N and 20°N close to Duqm around 2030 hours IST of 24th September 2019 as a Severe Cyclonic Storm with a wind speed of 110-120 kmph gusting to 135 kmph.

Forecast track and intensity are given in the following table:

Date/Time(IST)	Position (Lat. °N/ long. °E)	Maximum sustained surface wind speed (Kmph)	Category of cyclonic disturbance
24.09.19/0830	20.1/60.3	140-150 gusting to 165	Very Severe Cyclonic Storm
24.09.19/1130	20.0/59.6	130-140 gusting to 155	Very Severe Cyclonic Storm
24.09.19/1730	19.9/58.3	120-130 gusting to 145	Very Severe Cyclonic Storm
24.09.19/2330	19.8/57.0	90-100 gusting to 110	Severe Cyclonic Storm
25.09.19/0530	19.7/56.0	60-70 gusting to 80	Cyclonic Storm
25.09.19/1730	19.5/55.0	40-50 gusting to 60	Depression

Warnings:

(i) Wind warning

Gale wind, speed reaching 140-150 kmph gusting to 165 kmph is prevailing over northwest and adjoining westcentral Arabian Sea around system centre. It will gradually decrease becoming 120-130 kmph gusting to 145 kmph by 24th evening along & off Oman coast and over and around Masirah during next six hours. It would further weaken and become 110-120 kmph gusting to 130 kmph over northwest and adjoining westcentral Arabian Sea along & off Oman coast at the time of landfall.

(ii) Sea condition

The Sea conditions will be phenomenal over northwest and adjoining westcentral Arabian Sea during next 12 hours and high to very rough during subsequent 12 hours and improve thereafter.

(iii) Fishermen Warning

Contact: Cyclone Warning Division, Office of the Director General of Meteorology,
India Meteorological Department, Ministry of Earth Sciences.

Phone: (91) 11-24652484, FAX: (91) 11-24643128, 24623220, E-mail:cwdhq2008@gmail.com, Website: rsmcnewdelhi.imd.gov.in

Spatial rainfall distribution: Isolated: <25%, A few: 26-50%, Many: 51-75%, Most: 76-100%

Rainfall amount (mm): Heavy rain: 64.5 – 115.5, Very heavy rain: 115.6 – 204.4, Extremely heavy rain: 204.5 or more.

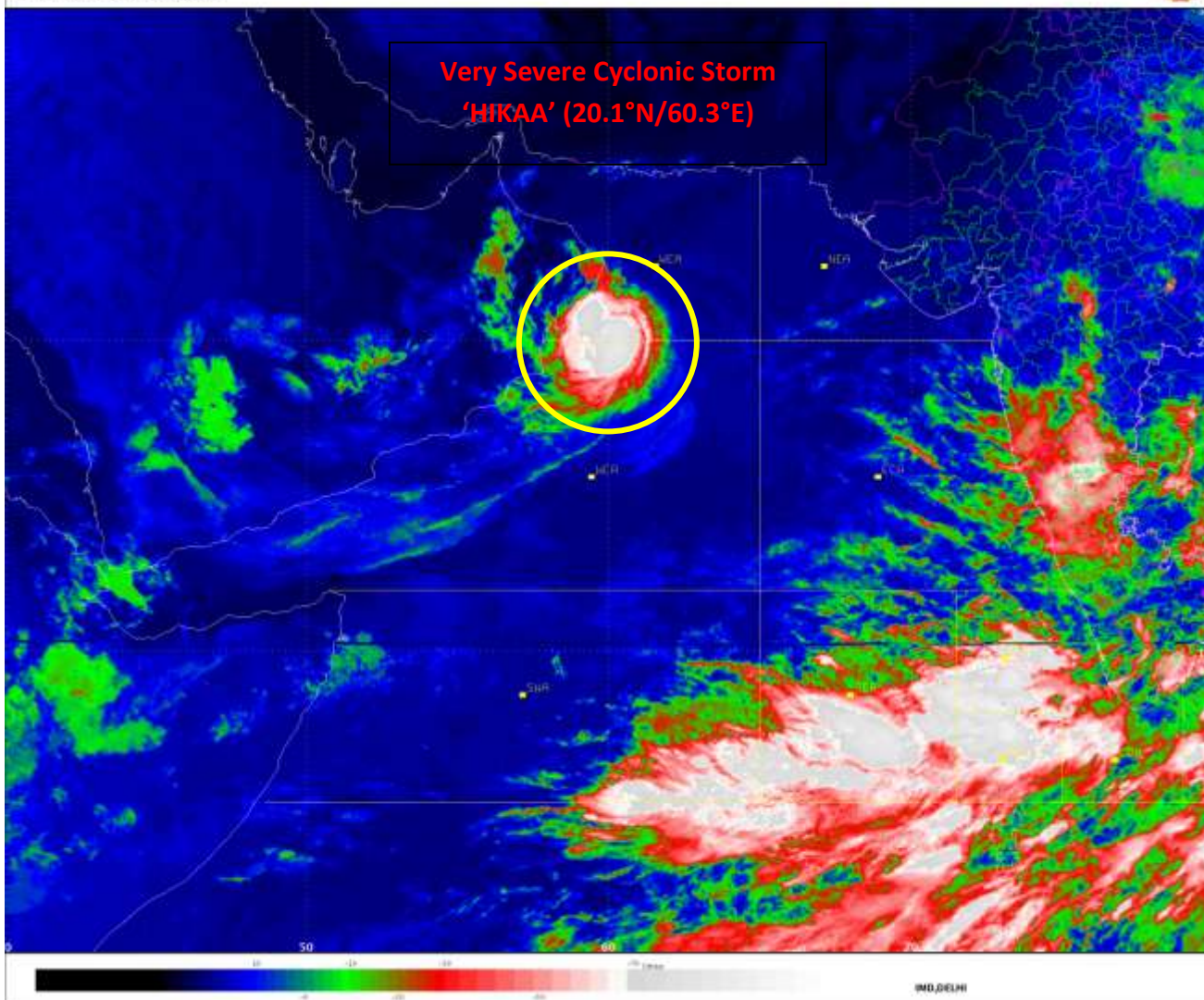
The fishermen are advised not to venture into northwest & adjoining westcentral Arabian Sea till 25th morning.

The system is under continuous surveillance and concerned state governments are being informed regularly.

Kindly visit www.imd.gov.in, www.rsmcnewdelhi.imd.gov.in and www.mausam.imd.gov.in for updates on the system.

SAT INSAT-3D
IMG_TIR1_TEMP 10.8 um
SECTOR ARABIAN_SEA Mercator (NHC LUT)

24-09-2019/03:30 GMT
24-09-2019/09:00 IST



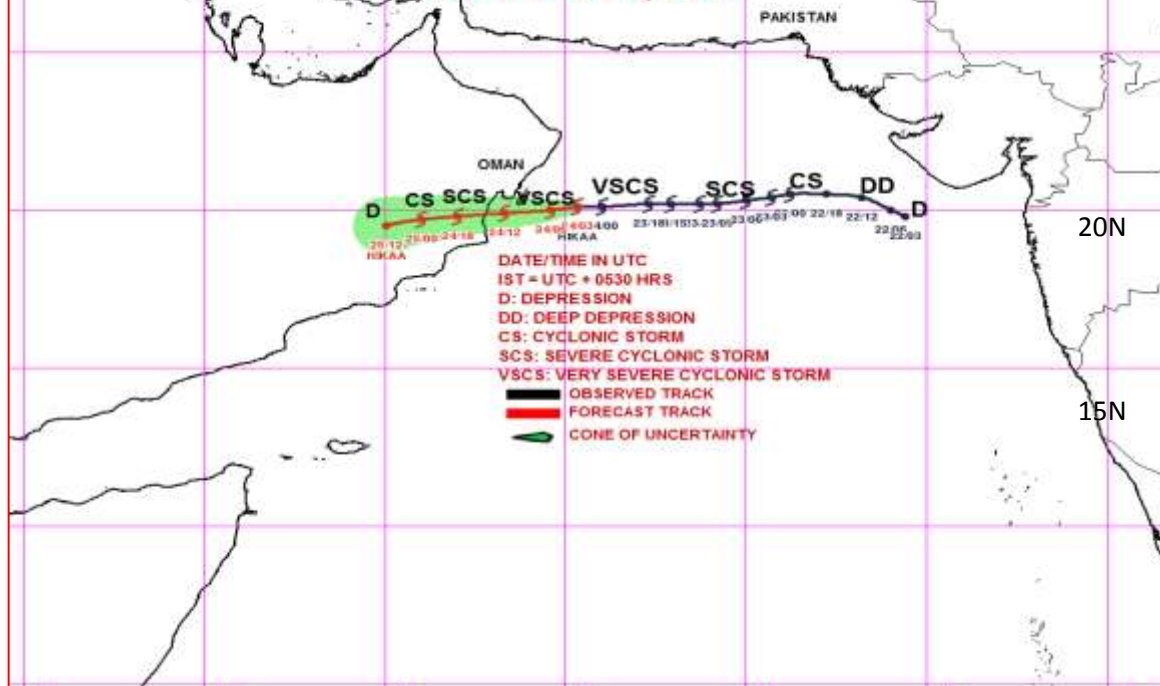
Contact: Cyclone Warning Division, Office of the Director General of Meteorology,
India Meteorological Department, Ministry of Earth Sciences.

Phone: (91) 11-24652484, FAX: (91) 11-24643128, 24623220, E-mail: cwdhq2008@gmail.com, Website: rsmcnewdelhi.imd.gov.in

Spatial rainfall distribution: Isolated: <25%, A few: 26-50%, Many: 51-75%, Most: 76-100%

Rainfall amount (mm): Heavy rain: 64.5 – 115.5, Very heavy rain: 115.6 – 204.4, Extremely heavy rain: 204.5 or more.

OBSERVED AND FORECAST TRACK OF VERY SEVERE CYCLONIC STORM HIKAA OVER NORTHWEST AND ADJOINING WESTCENTRAL ARABIAN SEA BASED ON 0300 UTC OF 24TH SEPTEMBER, 2019



OBSERVED & FORECAST TRACK ALONGWITH QUADRANT WIND DISTRIBUTION OF VERY SEVERE CYCLONIC STORM HIKAA OVER NORTHWEST AND ADJOINING WESTCENTRAL ARABIAN SEA BASED ON 0300 UTC OF 24TH SEPTEMBER, 2019

