



Government of India  
Ministry of Earth Sciences  
Earth System Science Organisation



Earth System Science Organisation  
India Meteorological Department

## PRESS RELEASE- 12

Time of issue: 1530 hours IST

Dated: 04-11-2019

**Sub: (a) Extremely Severe Cyclonic Storm “MAHA” over eastcentral and adjoining westcentral Arabian Sea: CYCLONE ALERT FOR GUJARAT COAST: **YELLOW MESSAGE** and (b) Well marked low pressure area over north Andaman Sea**

**(a) Extremely Severe Cyclonic Storm “MAHA” over eastcentral and adjoining westcentral Arabian Sea**

Yesterday’s severe cyclonic storm “MAHA” (Pronounced as M’maha) over eastcentral Arabian Sea intensified into a very severe cyclonic storm in the same evening (1430 hrs IST of 3<sup>rd</sup> November) over the same region. Moving west-northwestwards, it further intensified into an extremely severe cyclonic storm in the early morning (0530 hrs IST) of today, the 4<sup>th</sup> November, 2019 over eastcentral & adjoining westcentral Arabian Sea. At 1130 hrs IST of today, it lay centered over the same region near latitude 18.6°N and longitude 64.3°E, about 680 km west-southwest of Veraval (Gujarat), 730 km west-southwest of Diu and 650 km west-southwest of Porbandar.

It is very likely to intensify further till 5<sup>th</sup> November morning and weaken thereafter. It is very likely to move west-northwestwards slowly during next 18 hours, re-curve east-northeastwards and move rapidly thereafter. It is very likely to cross Gujarat coast between Diu and Porbandar as a Cyclonic Storm with a maximum sustained wind speed of 80-90 Kmph gusting to 100 Kmph by early hours of 7<sup>th</sup> November, 2019.

Forecast track and intensity are given in the following table:

Date/Time(IST)	Position (Lat. °N/ Long. °E)	Maximum sustained surface wind speed (Kmph)	Category of cyclonic disturbance
04.11.19/1130	18.6/64.3	160-170 gusting to 190	Extremely Severe Cyclonic Storm
04.11.19/1730	18.8/64.0	165-175 gusting to 195	Extremely Severe Cyclonic Storm
04.11.19/2330	19.1/63.8	170-180 gusting to 200	Extremely Severe Cyclonic Storm
05.11.19/0530	19.4/64.0	170-180 gusting to 200	Extremely Severe Cyclonic Storm
05.11.19/1130	19.7/64.6	155-165 gusting to 185	Very Severe Cyclonic Storm
05.11.19/2330	20.0/65.5	140-150 gusting to 165	Very Severe Cyclonic Storm
06.11.19/1130	20.3/67.5	110-120 gusting to 135	Severe Cyclonic Storm
06.11.19/2330	20.8/69.6	80-90 gusting to 100	Cyclonic Storm
07.11.19/1130	21.5/71.6	55-65 gusting to 75	Deep Depression
07.11.19/2230	22.1/73.6	40-50 gusting to 60	Depression

### Warnings:

#### (i) Rainfall:

- **Gujarat:** Light to moderate rainfall at most places with heavy to very heavy falls at a few places very likely over Saurashtra and Gujarat region (**Junagarh, Gir Somnath, Amreli, Bhavnagar, Surat, Bharuch, Anand, Ahmedabad, Botad, Porbandar, Rajkot**) during 6<sup>th</sup> & isolated heavy

Contact: Cyclone Warning Division, Office of the Director General of Meteorology, India Meteorological Department, Ministry of Earth Sciences.

Phone: (91) 11-24652484, FAX: (91) 11-24643128, 24623220, E-mail: cwdhq2008@gmail.com, Website: [rsmcnewdelhi.imd.gov.in](http://rsmcnewdelhi.imd.gov.in)

Spatial rainfall distribution: Isolated: <25%, A few: 26-50%, Many: 51-75%, Most: 76-100%

Rainfall amount (mm): Heavy rain: 64.5 – 115.5, Very heavy rain: 115.6 – 204.4, Extremely heavy rain: 204.5 or more.

to very heavy falls over **Bhavnagar, Surat, Bharuch, Anand, Ahmedabad, Botad, Vadodara** on 7<sup>th</sup> November, 2019.

- **Maharashtra:** Light to moderate rainfall at most places with isolated heavy falls very likely over north Madhya Maharashtra and north Konkan (Palghar & Thane districts) on 6<sup>th</sup> & northern most districts of Madhya Maharashtra on 7<sup>th</sup> November, 2019.

#### (ii) Wind warning

- **Gujarat , Daman, Diu, Dadra & Nagar Haveli:** Squally wind speed reaching 40-50 kmph gusting to 60 kmph likely to commence over northeast Arabian Sea along & off Gujarat coast from 6<sup>th</sup> November morning. It is very likely to increase gradually becoming 80-90 Kmph gusting to 100 Kmph along & off **Junagarh, Gir Somnath, Diu, Amreli** districts and 60-80 kmph gusting to 100 kmph over **Bhavnagar, Bharuch, Anand, Ahmedabad, Botad, Porbandar, Rajkot** districts, 50-60 kmph gusting to 70 kmph over Surat, Navsari, Valsad, Daman and Dadra & Nagar Haveli from 6<sup>th</sup> November evening for next 12 hours. It will decrease thereafter.
- **Maharashtra:** Squally wind speed reaching 40-50 kmph gusting to 60 kmph likely along & off Maharashtra coast from 6<sup>th</sup> morning, it is very likely to increase becoming 50-60 Kmph gusting to 70 Kmph from 6<sup>th</sup> November evening along & off Palghar & Thane districts for next 12 hours.
- **Arabian Sea:** Gale wind speed reaching 160-170 kmph gusting to 190 kmph is prevailing over eastcentral and adjoining westcentral Arabian Sea around the system centre. It is very likely to increase gradually over east-central Arabian Sea becoming 170-180 kmph gusting to 200 kmph over westcentral and adjoining eastcentral & northwest Arabian Sea by mid-night of today, the 4<sup>th</sup> November and decrease thereafter.

#### (iii) Sea condition

- **Gujarat Coast:** Sea condition will be rough to very rough along & off Gujarat coast from 6<sup>th</sup> November morning and becoming high from 6<sup>th</sup> evening.
- **Maharashtra Coast:** Sea condition will be rough to very rough along & off north Maharashtra coast on 06<sup>th</sup> November.
- **Arabian Sea:** Sea condition will be phenomenal over eastcentral and adjoining westcentral and northwest Arabian Sea till 05<sup>th</sup> November and will be very high on 6<sup>th</sup> November. Sea condition will be high over westcentral Arabian Sea from 5<sup>th</sup> November evening and improve thereafter. It will be very high to high over northeast Arabian Sea during 4<sup>th</sup> – 6<sup>th</sup> November.

#### (iv) Storm surge

- Storm surge of 1 meter above Astronomical tide is likely to inundate low lying areas of **Bhavnagar** District and 0.5 – 1.0 meter above Astronomical tide is likely to inundate low lying areas of **Junagarh, Gir Somnath, Amreli, Surat, Bharuch, Anand, Ahmedabad, Porbandar** Districts around the time of landfall.

#### (v) Fishermen Warning

- Total suspension of fishing operations till 6<sup>th</sup> November.
- The fishermen are advised not to venture into westcentral Arabian Sea till 5<sup>th</sup> November and over eastcentral & adjoining northeast Arabian Sea till 06<sup>th</sup> November.
- The fishermen are advised not to venture into Sea along & off Gujarat coast and adjoining north Maharashtra coast from 5<sup>th</sup> – 7<sup>th</sup> November evening.
- The fishermen out at Sea are advised to return to the coast.

---

Contact: Cyclone Warning Division, Office of the Director General of Meteorology,  
India Meteorological Department, Ministry of Earth Sciences.

Phone: (91) 11-24652484, FAX: (91) 11-24643128, 24623220, E-mail: [cwdhq2008@gmail.com](mailto:cwdhq2008@gmail.com), Website: [rsmcnewdelhi.imd.gov.in](http://rsmcnewdelhi.imd.gov.in)

Spatial rainfall distribution: Isolated: <25%, A few: 26-50%, Many: 51-75%, Most: 76-100%

Rainfall amount (mm): Heavy rain: 64.5 – 115.5, Very heavy rain: 115.6 – 204.4, Extremely heavy rain: 204.5 or more.

**(vi) Damage Expected over coastal districts of Gujarat (Junagarh, Gir Somnath, Amreli, Bhavnagar, Surat, Bharuch, Anand, Ahmedabad, Botad, Porbandar, Rajkot) and Daman, Diu, Dadra & Nagar Haveli:**

- Damage to thatched houses/ huts. Thatched Roof tops may blow off. Unattached metal sheets may fly.
- Damage to embankments/ salt pans.
- Partial damage to power and communication lines.
- Major damage to Kutcha and some damage to Pucca roads. Flooding of escape routes.
- Breaking of tree branches, uprooting of trees. Damage to banana and papaya trees. Dead limbs blown from trees.
- Major damage to coastal crops.

**(vii) Action Suggested for Gujarat coast (Junagadh, Gir Somnath, Amreli, Bhavnagar, Surat, Bharuch, Anand, Ahmedabad, Botad, Porbandar, Rajkot) and Daman, Diu, Dadra & Nagar Haveli:**

- Total suspension of fishing operations till 6<sup>th</sup> November.
- Coastal hutment dwellers to be moved to safer places. People in affected areas to remain indoors.
- Movement in motor boats unsafe.

**(b) Low pressure area over north Andaman Sea**

A low pressure area formed over north Andaman Sea in the early morning (0530 hrs IST) of today, the 4<sup>th</sup> November 2019. It has become well marked in the afternoon of today over the same region.

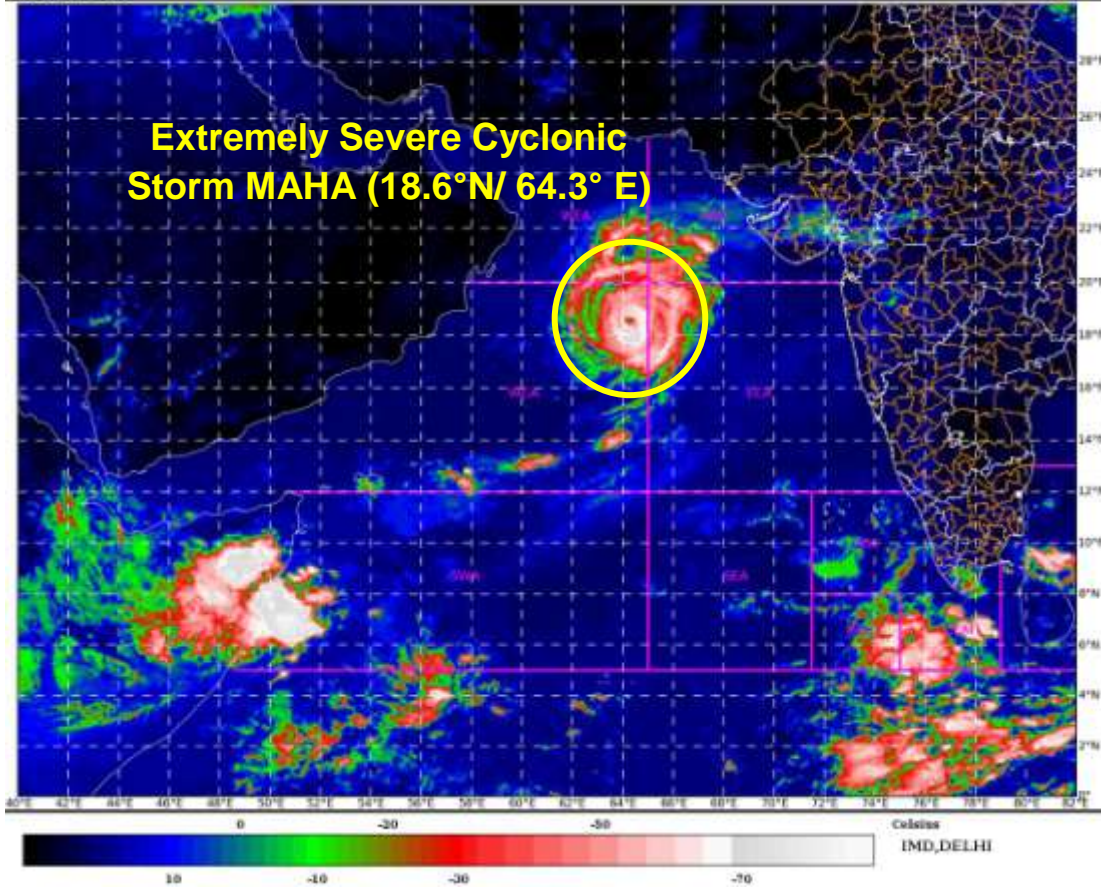
**It is very likely to concentrate into a depression over eastcentral BoB during next 48 hours and intensify further with northwestwards movement.**

**Both the systems are under continuous surveillance and concerned state governments are being informed regularly.**

Kindly visit [www.imd.gov.in](http://www.imd.gov.in), [www.rsmcnewdelhi.imd.gov.in](http://www.rsmcnewdelhi.imd.gov.in) and [www.mausam.imd.gov.in](http://www.mausam.imd.gov.in) for updates on the system.

SAT : INSAT-3D IMG  
IMG\_TIR1\_TEMP 10.8 um  
ARABIAN SEA

04-11-2019(0600 to 0627) GMT  
04-11-2019(1130 to 1157) IST



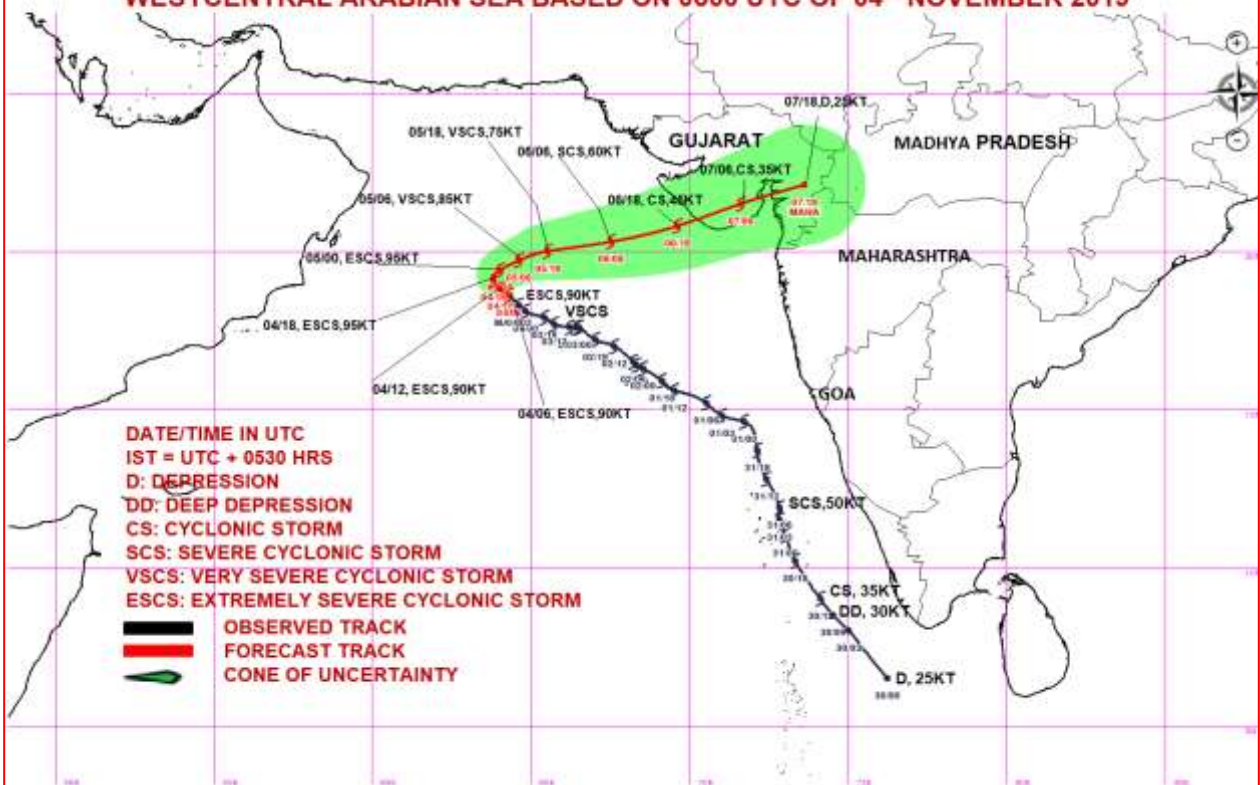
Contact: Cyclone Warning Division, Office of the Director General of Meteorology,  
India Meteorological Department, Ministry of Earth Sciences.

Phone: (91) 11-24652484, FAX: (91) 11-24643128, 24623220, E-mail: [cwdhq2008@gmail.com](mailto:cwdhq2008@gmail.com), Website: [rsmcnewdelhi.imd.gov.in](http://rsmcnewdelhi.imd.gov.in)

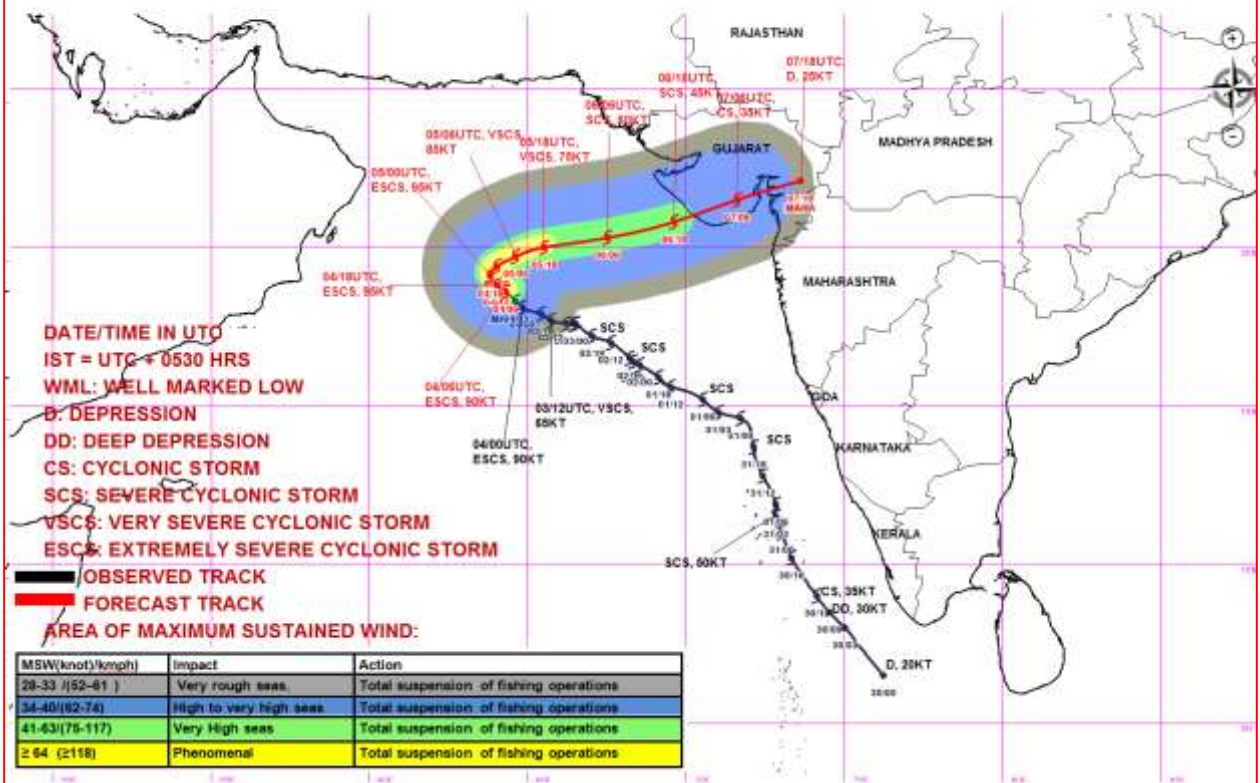
Spatial rainfall distribution: Isolated: <25%, A few: 26-50%, Many: 51-75%, Most: 76-100%

Rainfall amount (mm): Heavy rain: 64.5 – 115.5, Very heavy rain: 115.6 – 204.4, Extremely heavy rain: 204.5 or more.

**OBSERVED & FORECAST TRACK ALONGWITH CONE OF UNCERTAINTY IN ASSOCIATION WITH EXTREMELY SEVERE CYCLONIC STORM "MAHA" OVER EASTCENTRAL & ADJOINING WESTCENTRAL ARABIAN SEA BASED ON 0600 UTC OF 04<sup>th</sup> NOVEMBER 2019**



**OBSERVED & FORECAST TRACK ALONGWITH QUADRANT WIND DISTRIBUTION IN ASSOCIATION WITH VERY SEVERE CYCLONIC STORM "MAHA" OVER EASTCENTRAL & ADJOINING WESTCENTRAL ARABIAN SEA BASED ON 0600 UTC OF 4<sup>th</sup> NOVEMBER 2019**



Contact: Cyclone Warning Division, Office of the Director General of Meteorology, India Meteorological Department, Ministry of Earth Sciences.

Phone: (91) 11-24652484, FAX: (91) 11-24643128, 24623220, E-mail: [cwdhq2008@gmail.com](mailto:cwdhq2008@gmail.com), Website: [rsmcnewdelhi.imd.gov.in](http://rsmcnewdelhi.imd.gov.in)

Spatial rainfall distribution: Isolated: <25%, A few: 26-50%, Many: 51-75%, Most: 76-100%

Rainfall amount (mm): Heavy rain: 64.5 – 115.5, Very heavy rain: 115.6 – 204.4, Extremely heavy rain: 204.5 or more.