



Government of India
Ministry of Earth Sciences



India Meteorological Department

PRESS RELEASE - 3

Time of issue: 1530 hours IST

Dated: 02-06-2020

Sub: Cyclonic Storm 'NISARGA' over Eastcentral Arabian Sea: Cyclone Warning for north Maharashtra and adjoining south Gujarat coasts: Orange message

Yesterday's depression over eastcentral & adjoining southeast Arabian Sea moved nearly northwards and intensified into deep depression over eastcentral Arabian Sea in the early morning (0530 hrs IST) of today, the 2nd June 2020. It further intensified into cyclonic storm "NISARGA" in the noon (1130 hrs IST) of 2nd June and lay centered over eastcentral Arabian Sea near latitude 15.6°N and longitude 71.2°E, about 280 km west-northwest of Panjim (Goa), 430 km south-southwest of Mumbai (Maharashtra) and 640 km south-southwest of Surat (Gujarat).

It is very likely to intensify into a severe cyclonic storm during next 12 hours. It is very likely to move north-northeastwards and cross north Maharashtra and adjoining south Gujarat coast between Harihareshwar and Daman, **close to Alibag (Raigad District, Maharashtra) during the afternoon of 03rd June as a Severe Cyclonic Storm with a maximum sustained wind speed of 100-110 kmph gusting to 120 kmph.**

Forecast track and intensity are given in the following table:

Date/Time(IST)	Position (Lat. °N/ long. °E)	Maximum sustained surface wind speed (Kmph)	Category of cyclonic disturbance
02.06.20/1130	15.6/71.2	60-70 gusting to 80	Cyclonic Storm
02.06.20/1730	16.3/71.3	80-90 gusting to 100	Cyclonic Storm
02.06.20/2330	17.0/71.5	90-100 gusting to 110	Severe Cyclonic Storm
03.06.20/0530	17.7/72.0	100-110 gusting to 120	Severe Cyclonic Storm
03.06.20/1130	18.5/72.7	100-110 gusting to 120	Severe Cyclonic Storm
03.06.20/2330	19.9/73.9	70-80 gusting to 90	Cyclonic Storm
04.06.20/1130	21.3/75.2	50-60 gusting to 70	Deep Depression

Warnings:

(i) Rainfall:

- Light to moderate rainfall at most places with heavy to very heavy falls at isolated places very likely over Konkan & Goa during next 24 hours. Light to moderate rainfall at most places with isolated heavy falls very likely over Coastal Karnataka, Madhya Maharashtra and Marathwada during next 24 hours.
- Light to moderate rainfall at most places with heavy to very heavy falls at a few places and **extremely heavy falls (≥ 20 cm in 24 hours)** at isolated places very likely over north Konkan (Mumbai, Palgar, Thane, Raigad districts) and north Madhya Maharashtra on 3rd June.
- Light to moderate rainfall at most places with heavy to very heavy falls at isolated places over south Konkan (Ratnagiri & Sindhudurg districts) & Goa and south Gujarat region (Valsad, Navsari, Dang, Daman, Dadra & Nagar Haveli and Surat districts) on 3rd June.
- Light to moderate rainfall at most places with heavy falls at isolated places over west Madhya Pradesh on 03rd June.

Contact: Cyclone Warning Division, Office of the Director General of Meteorology,
India Meteorological Department, Ministry of Earth Sciences.

Phone: (91) 11-24652484, FAX: (91) 11-24643128, 24623220, E-mail:cwdhq2008@gmail.com, Website: rsmcnnewdelhi.imd.gov.in

Spatial rainfall distribution: Isolated: <25%, A few: 26-50%, Many: 51-75%, Most: 76-100%

Rainfall amount (mm): Heavy rain: 64.5 – 115.5, Very heavy rain: 115.6 – 204.4, Extremely heavy rain: 204.5 or more.

(ii) Wind warning

- Squally wind, speed reaching 60-70 kmph gusting to 80 kmph, is prevailing over eastcentral Arabian Sea. It will gradually increase becoming Gale wind, speed reaching 80-90 kmph gusting to 100 kmph, over eastcentral Arabian Sea off south Maharashtra & Goa coasts from today evening and further becoming 100-110 kmph gusting to 120 kmph over eastcentral Arabian Sea along & off Maharashtra (Raigad, Mumbai, Palghar, Thane) coast from 03rd June morning. Gale wind, speed reaching 80-90 kmph gusting to 100 kmph, likely along & off Valsad, Navsari districts of Gujarat, Daman and along & off northeast Arabian Sea, Ratnagiri, Sindhudurg districts of Maharashtra and 70-80 kmph gusting to 90 kmph along & off Surat & Bharuch districts of south Gujarat, Dadra & Nagar Haveli from 03rd June noon.
- Squally wind, speed reaching 50-60 kmph gusting to 70 kmph is likely to prevail over northeast Arabian Sea along & off remaining districts of south Gujarat coast on 03rd June.
- Squally wind, speed reaching 50-60 kmph gusting to 70 kmph is likely to prevail over eastcentral Arabian Sea along and off Karnataka-Goa coasts during next 24 hours.

(iii) Sea condition

- The sea condition is rough to very rough over eastcentral Arabian Sea. It would become very rough to high over eastcentral Arabian Sea from today afternoon.
- It will become high to very high over eastcentral Arabian Sea along & off Maharashtra & Goa coasts from today evening till tomorrow, the 3rd June evening and gradually improve thereafter.
- The sea condition is very likely to be very rough to high over northeast Arabian Sea along & off south Gujarat coast on 03rd June.

(iv) Storm Surge Warning:

- Storm surge of about 1-2 meters height above astronomical tide is very likely to inundate low lying areas of Mumbai, Thane and Raigad districts and 0.5-1.0 meter height above the astronomical tide likely to inundate low lying areas of Ratnagiri district during the time of landfall.

(v) Damage Expected:

- Major damage to thatched houses/ huts. Roof tops may blow off. Unattached metal sheets may fly.
- Damage to power and communication lines.
- Major damage to Kutcha and some damage to Pucca roads. Flooding of escape routes.
- Breaking of tree branches, uprooting of large avenue trees. Damage to banana and papaya trees. Large dead limbs blown from trees.
- Major damage to coastal crops.
- Damage to embankments/ salt pans.

(vi) Fishermen Warning & Action Suggested:

- Fishermen are advised not to venture into Eastcentral and Northeast Arabian Sea and along & off Karnataka-Goa-Maharashtra-south Gujarat coasts till 03rd June.
- Total suspension of fishing operations.
- Mobilise evacuation from low lying areas.

**Contact: Cyclone Warning Division, Office of the Director General of Meteorology,
India Meteorological Department, Ministry of Earth Sciences.**

Phone: (91) 11-24652484, FAX: (91) 11-24643128, 24623220, E-mail:cwdhq2008@gmail.com, Website: rsmcnwdelhi.imd.gov.in

Spatial rainfall distribution: Isolated: <25%, A few: 26-50%, Many: 51-75%, Most: 76-100%

Rainfall amount (mm): Heavy rain: 64.5 – 115.5, Very heavy rain: 115.6 – 204.4, Extremely heavy rain: 204.5 or more.

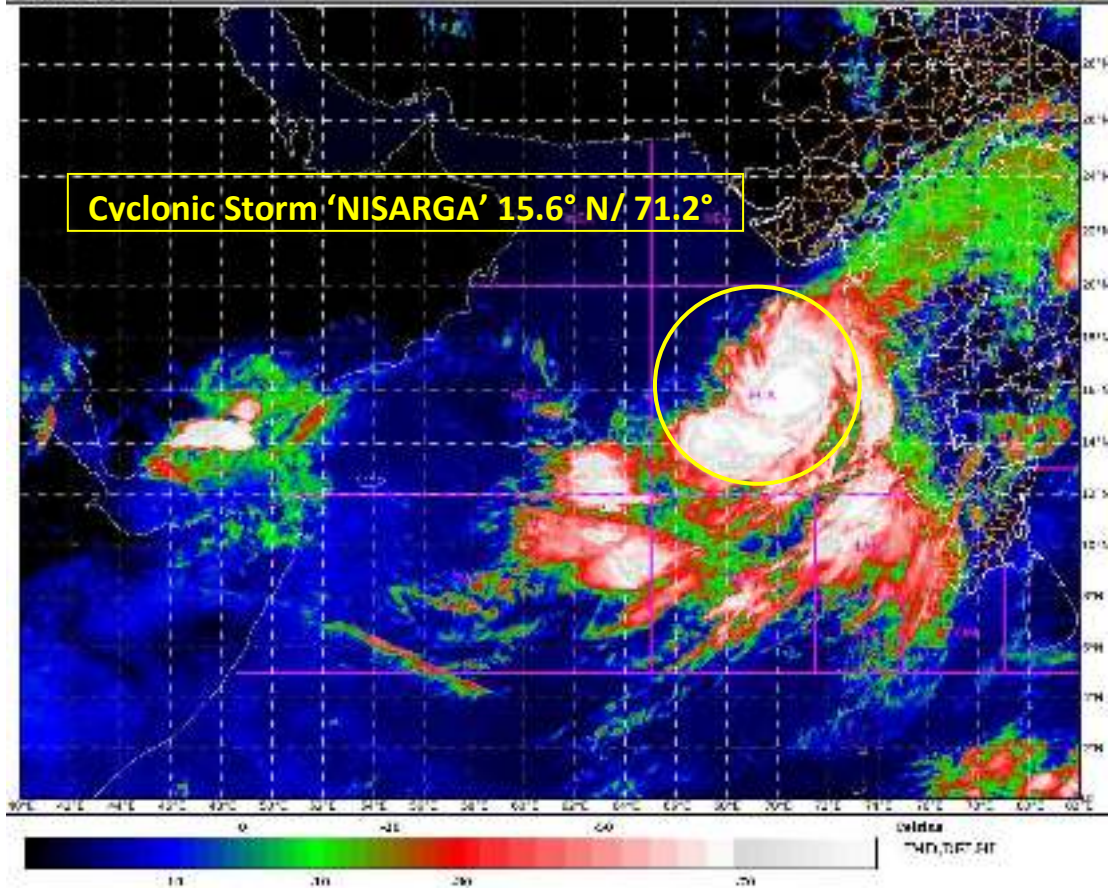
- Judicious regulation of rail and road traffic.
- People in affected areas to remain indoors.
- Movement in motor boats and small ships unsafe.

The system is under continuous surveillance and the concerned state governments are being informed regularly.

Kindly visit www.rsmcnewdelhi.imd.gov.in and www.mausam.imd.gov.in for updates on the system.

SAT : INSAT-3D IMG
IMG_TPR_TEMP 10S img
ARABIAN SEA

02-06-2020(0730 to 0737) GMT
02-06-2020(1300 to 1307) IST



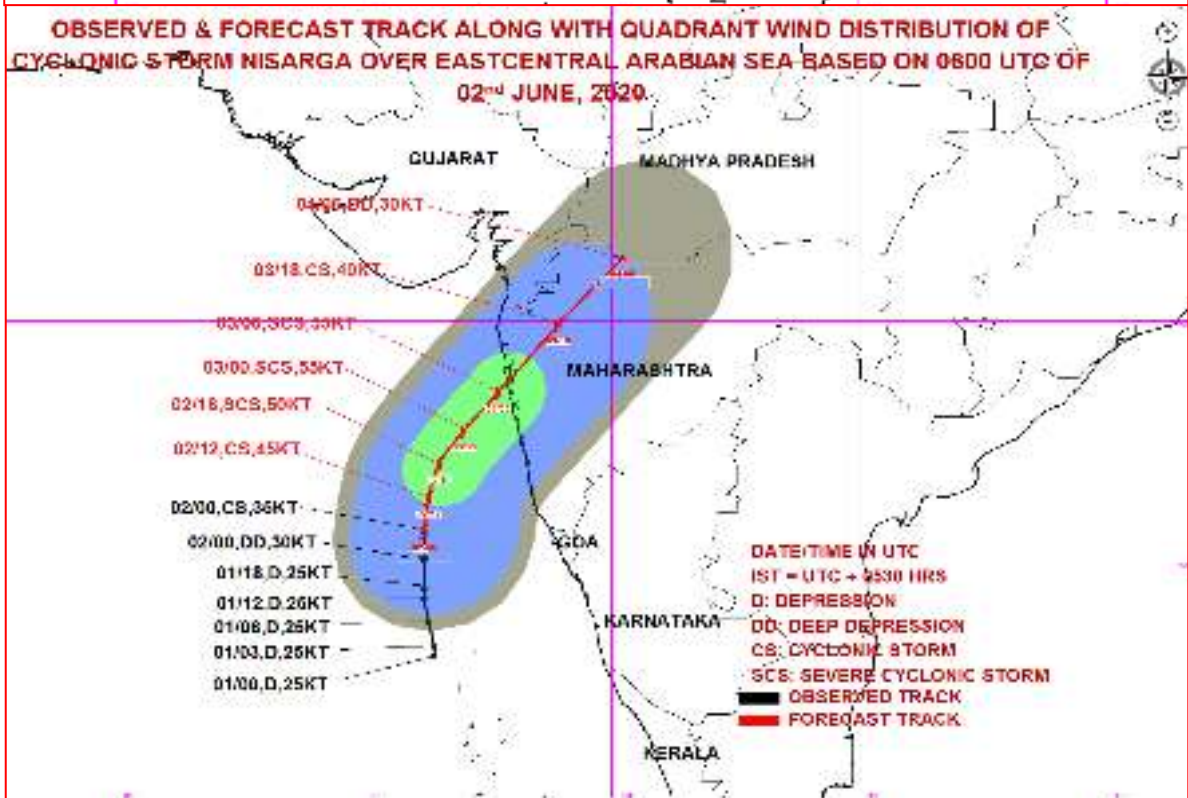
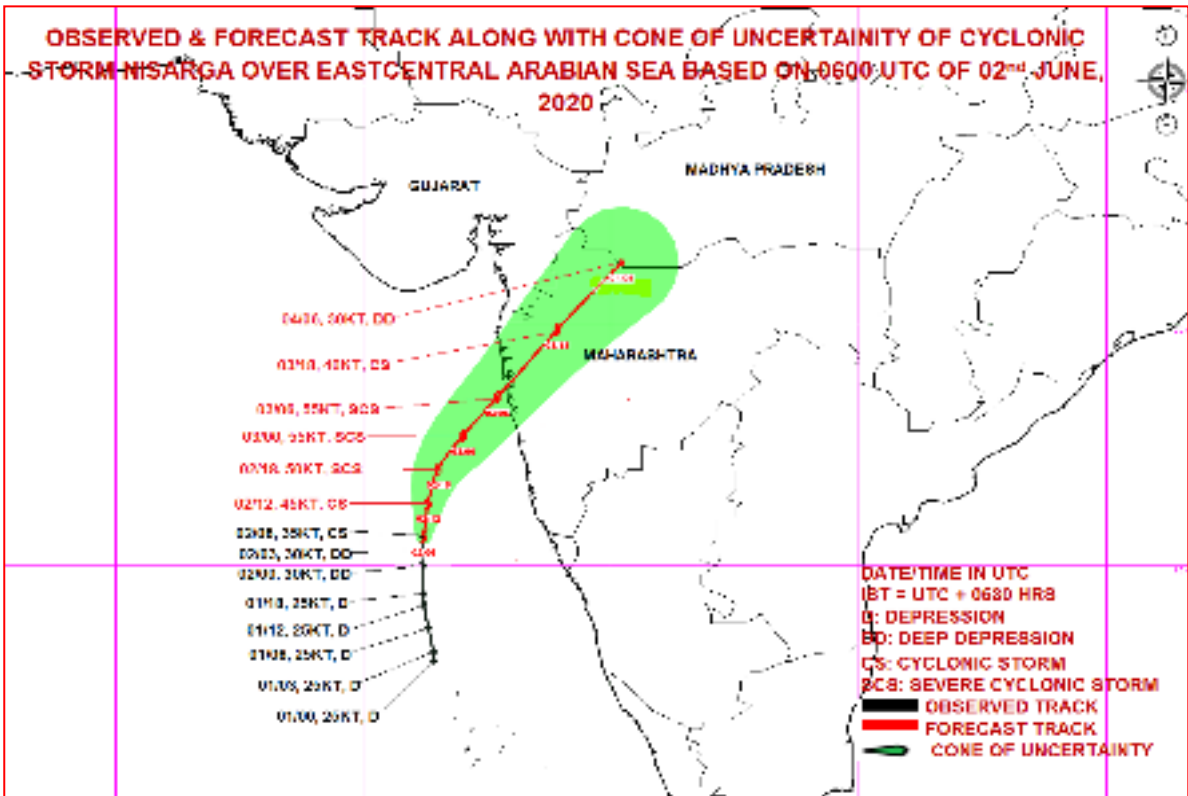
Legend: ECA- Eastcentral Arabian Sea

Contact: Cyclone Warning Division, Office of the Director General of Meteorology,
India Meteorological Department, Ministry of Earth Sciences.

Phone: (91) 11-24652484, FAX: (91) 11-24643128, 24623220, E-mail:cwdhq2008@gmail.com, Website: rsmcnewdelhi.imd.gov.in

Spatial rainfall distribution: Isolated: <25%, A few: 26-50%, Many: 51-75%, Most: 76-100%

Rainfall amount (mm): Heavy rain: 64.5 – 115.5, Very heavy rain: 115.6 – 204.4, Extremely heavy rain: 204.5 or more.



MSW(knot)/kmph)	Impact	Action
28-33 (52-61)	Very rough seas.	Total suspension of fishing operations
34-40(62-74)	High to very high seas	Total suspension of fishing operations
41-63(75-117)	Very High seas	Total suspension of fishing operations

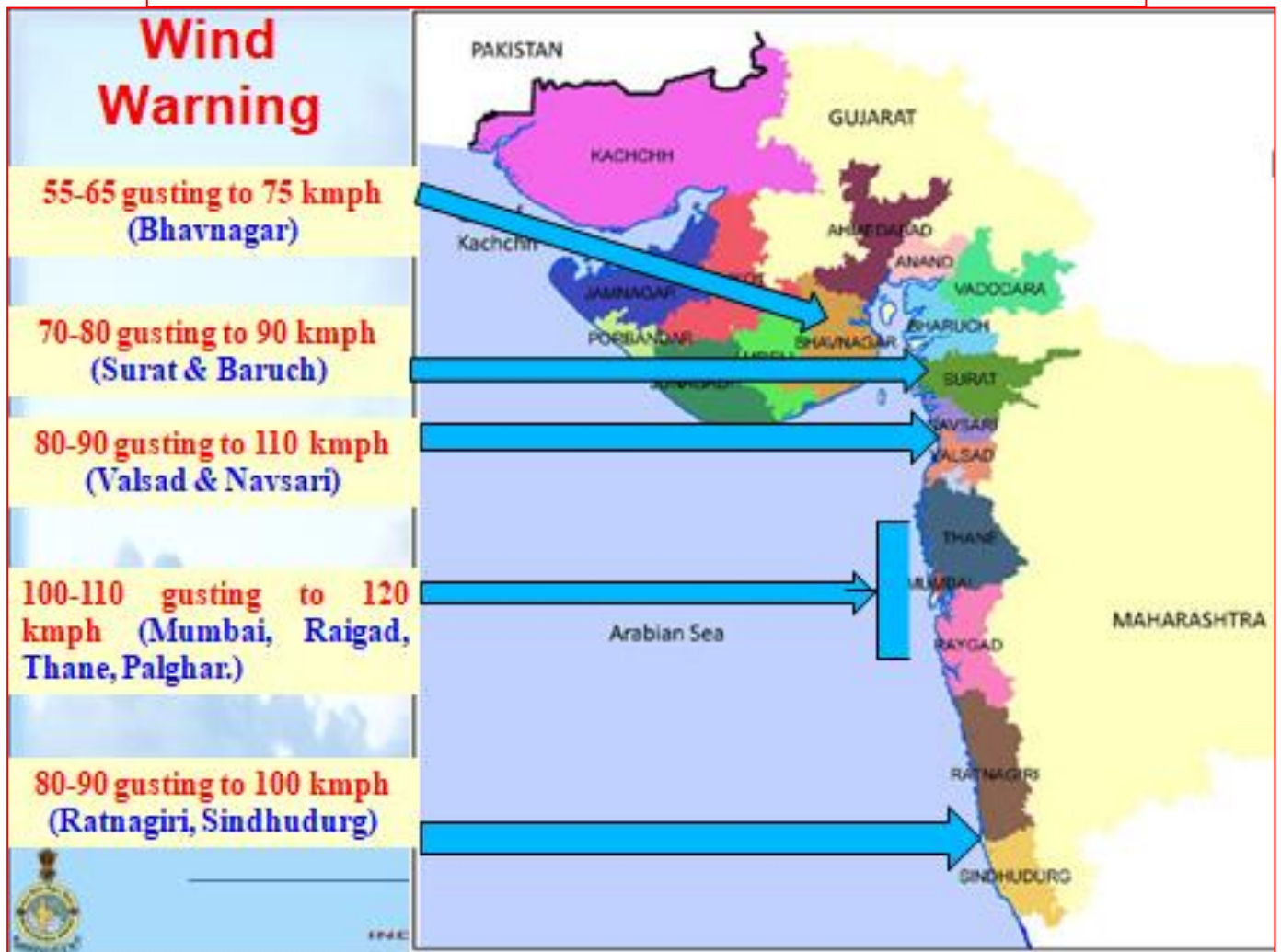
Contact: Cyclone Warning Division, Office of the Director General of Meteorology, India Meteorological Department, Ministry of Earth Sciences.

Phone: (91) 11-24652484, FAX: (91) 11-24643128, 24623220, E-mail:cwdhq2008@gmail.com, Website: rsmcnwdelhi.imd.gov.in

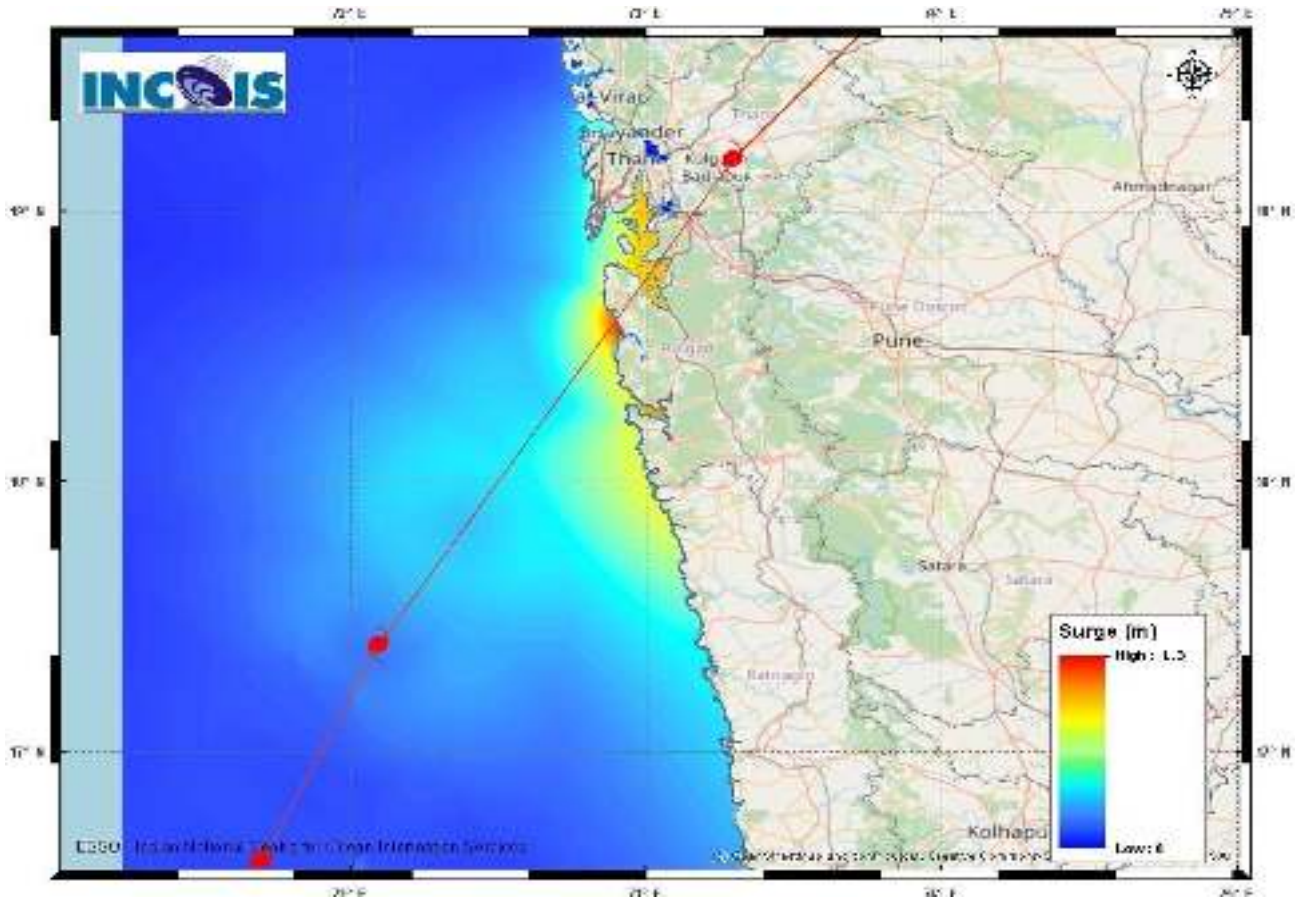
Spatial rainfall distribution: Isolated: <25%, A few: 26-50%, Many: 51-75%, Most: 76-100%

Rainfall amount (mm): Heavy rain: 64.5 – 115.5, Very heavy rain: 115.6 – 204.4, Extremely heavy rain: 204.5 or more.

District Level Wind Warning



Storm surge Warning



MANDAL/TALUK	DISTRICT	STATE / UNION TERRITORY	NEAREST PLACE OF HABITATION	* STORM SURGE (m)	* EXPECTED INUNDATION EXTENT (km)
ALIBAG	RAIGAD	MAHARASHTRA	ALIBAG	0.5-1.3	Upto 1.9
DAPOLI	RATNAGIRI	MAHARASHTRA	DAPOLI	0.6-0.8	Upto 0.1
PEN	RAIGAD	MAHARASHTRA	PEN	0.8-1.0	Upto 1.4
THANE	GREATER MUMBAI	MAHARASHTRA	THANE	0.8-1.0	Upto 0.2
VASAI	THANE	MAHARASHTRA	VASAI	0.5-0.7	Upto 1.1

Contact: Cyclone Warning Division, Office of the Director General of Meteorology,
India Meteorological Department, Ministry of Earth Sciences.

Phone: (91) 11-24652484, FAX: (91) 11-24643128, 24623220, E-mail:cwdhq2008@gmail.com, Website: rsmcnwdelhi.imd.gov.in

Spatial rainfall distribution: Isolated: <25%, A few: 26-50%, Many: 51-75%, Most: 76-100%

Rainfall amount (mm): Heavy rain: 64.5 – 115.5, Very heavy rain: 115.6 – 204.4, Extremely heavy rain: 204.5 or more.