



**REGIONAL SPECIALISED METEOROLOGICAL CENTRE-TROPICAL CYCLONES, NEW DELHI
TROPICAL WEATHER OUTLOOK**

DEMS-RSMC TROPICAL CYCLONES NEW DELHI DATED 06.05.2020

TROPICAL WEATHER OUTLOOK FOR NORTH INDIAN OCEAN (THE BAY OF BENGAL AND ARABIAN SEA) VALID FOR NEXT 120 HOURS ISSUED AT 0600 UTC OF 06.05.2020 BASED ON 0300 UTC OF 06.05.2020.

BAY OF BENGAL:

YESTERDAY'S LOW PRESSURE AREA OVER SOUTH ANDAMAN SEA AND ADJOINING SOUTHEAST BAY OF BENGAL (BOB) HAS BECOME LESS MARKED. HOWEVER, THE ASSOCIATED CYCLONIC CIRCULATION PERSISTS OVER THE SAME REGION.

SCATTERED TO BROKEN LOW AND MEDIUM CLOUDS WITH EMBEDDED MODERATE TO INTENSE CONVECTION LAY OVER SOUTHEAST BOB AND NEIGHBOURHOOD IN ASSOCIATION WITH THE LOW LEVEL CIRCULATION OVER THE AREA.

PROBABILITY OF CYCLOGENESIS DURING NEXT 120 HRS:

24 HOURS	24-48 HOURS	48-72 HOURS	72-96 HOURS	96-120 HOURS
NIL	NIL	NIL	NIL	NIL

ARABIAN SEA:

SCATTERED LOW AND MEDIUM CLOUDS WITH EMBEDDED MODERATE TO INTENSE CONVECTION LAY OVER SOUTHEAST ARABIAN SEA.

PROBABILITY OF CYCLOGENESIS DURING NEXT 120 HRS:

24 HOURS	24-48 HOURS	48-72 HOURS	72-96 HOURS	96-120 HOURS
NIL	NIL	NIL	NIL	NIL

PROBABILITY OF CYCLOGENESIS (FORMATION OF DEPRESSION)
NIL: 0%, LOW: 1-25%, FAIR: 26-50%, MODERATE: 51-75% AND HIGH: 76-100%

REMARKS:

THE MADDEN JULIAN OSCILLATION (MJO) INDEX LIES CURRENTLY IN PHASE 6 WITH AMPLITUDE LESS THAN 1. IT WILL MOVE TO PHASE 1 ACROSS PHASES 7 AND 8 WITH AMPLITUDE REMAINING LESS THAN 1 DURING SUBSEQUENT 5 DAYS. MJO PHASE AND AMPLITUDE IS NOT SUPPORTING ENHANCEMENT OF CONVECTIVE ACTIVITY OVER THE ANDAMAN SEA AND SOUTH BAY OF BENGAL (BOB) DURING NEXT 5 DAYS.

CONSIDERING THE SEA CONDITIONS, THE SEA SURFACE TEMPERATURE (SST) IS 30-31°C OVER ENTIRE BOB AND OVER EQUATORIAL INDIAN OCEAN. THE TROPICAL CYCLONE HEAT POTENTIAL IS MORE THAN 100 KJ/CM² OVER ANDAMAN SEA AND MAJOR PARTS OF SOUTH & CENTRAL BOB. IT IS ABOUT 60-80 KJ/CM² OVER REMAINING PARTS OF BOB AND IS DECREASING TOWARDS NORTH BOB.

CONSIDERING THE ENVIRONMENTAL CONDITIONS, THE LOWER LEVEL POSITIVE VORTICITY IS ABOUT 25 X10⁻⁶SEC⁻¹ OVER SOUTH BOB. ALSO SMALL ZONE OF HIGHER POSITIVE VORTICITY (50 X10⁻⁶SEC⁻¹) LIE OVER SOUTH ANDAMAN SEA OFF SUMATRA COAST WITH VERTICAL EXTENSION UPTO 500 HPA LEVEL. POSITIVE LOWER LEVEL CONVERGENCE ZONE (10X10⁻⁵SEC⁻¹) LIES OVER EQUATORIAL INDIAN OCEAN (EIO) TO THE SOUTH OF SRI LANKA. THE ZONE OF POSITIVE CONVERGENCE (5X10⁻⁵SEC⁻¹) OVER SOUTH ANDAMAN SEA HAS DECREASED DURING PAST 24 HOURS. ZONES OF POSITIVE UPPER LEVEL DIVERGENCE (30 AND 10X10⁻⁵ SEC⁻¹) LIE OVER EQUATORIAL INDIAN OCEAN TO THE SOUTH OF SRI LANKA AND SOUTHWEST BOB. VERTICAL WIND SHEAR (VWS) IS LOW TO MODERATE (10-20 KTS) TO THE SOUTH OF 10.0°N, ANDAMAN SEA AND EASTCENTRAL BOB. IT HAS BECOME HIGH OVER MAJOR PARTS OF BOB TO THE NORTH OF 10.0°N. THE UPPER TROPOSPHERIC RIDGE LIES NEAR 7.0°N.

MANY NUMERICAL MODELS INCLUDING IMD GFS, NCEP GFS, GEFS, NEPS AND NCUM ARE NOT CAPTURING ANY SIGNIFICANT CYCLONIC CIRCULATION OVER SOUTH ANDAMAN SEA AND NOT PREDICTING ANY CYCLOGENESIS DURING NEXT 5 DAYS. HOWEVER, ECMWF IS INDICATING CYCLOGENESIS OVER SOUTHEAST BAY OF BENGAL AND AROUND 13TH MAY WITHOUT MUCH INTENSIFICATION AND SLIGHT WEST-NORTHWESTWARD MOVEMENT ON 14TH MAY. GPP INDEX FORECAST IS INDICATING A POTENTIAL ZONE OF CYCLOGENESIS OVER SOUTH ANDAMAN SEA DURING 6TH-8TH MAY AND ANOTHER POTENTIAL ZONE OVER SOUTHWEST BOB WITH NORTHEASTWARDS MOVEMENT DURING 7TH-12TH MAY. IMD GFS IS ALSO INDICATING CYCLOGENESIS AROUND 15TH WITH INTENSIFICATION AND NORTHWARDS MOVEMENT. SCATSAT PASS AT 1322 UTC OF 5TH MAY IS INDICATING WINDS WITH STRENGTH 15 KTS OVER SOUTH ANDAMAN SEA.

THUS TO SUMMARISE, VARIOUS ENVIRONMENTAL FEATURES ARE INDICATING FURTHER WEAKENING OF THE SYSTEM OVER SOUTH ANDAMAN SEA & NEIGHBOURHOOD AND MOST OF THE MODELS ARE NOT PREDICTING ANY CYCLOGENESIS OVER BOB DURING NEXT 5 DAYS.

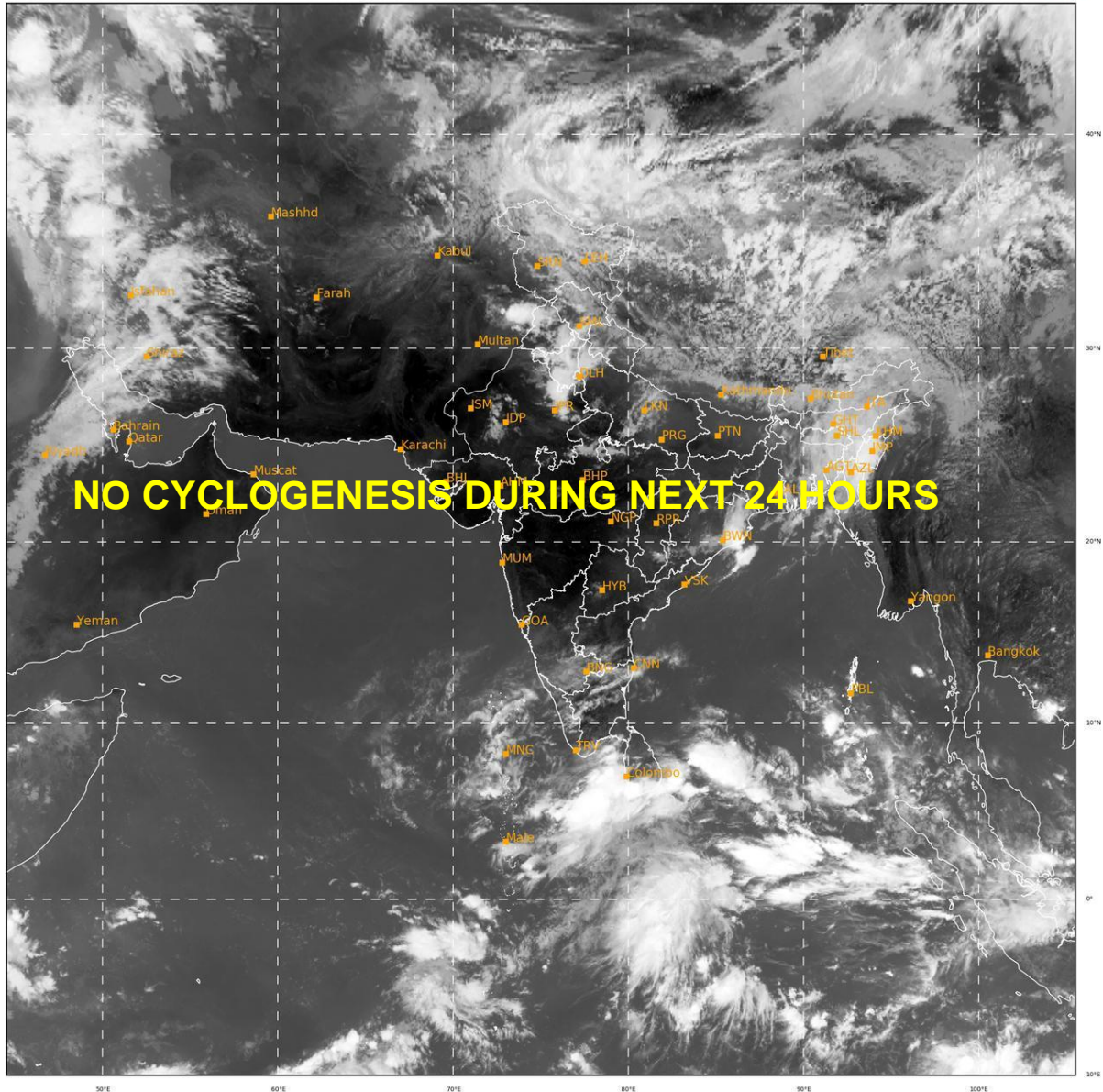
CONSIDERING ALL THE ABOVE, NO CYCLOGENESIS IS LIKELY OVER THE NORTH INDIAN OCEAN DURING NEXT 5 DAYS.

PROBABILITY OF CYCLOGENESIS (FORMATION OF DEPRESSION)

NIL: 0%, LOW: 1-25%, FAIR: 26-50%, MODERATE: 51-75% AND HIGH: 76-100%

SAT : INSAT-3D IMG
IMG_TIR1 10.8 um
LIC Mercator

06-05-2020/(0500 to 0526) GMT
06-05-2020/(1030 to 1056) IST



308

929

IMD,DELHI

PROBABILITY OF CYCLOGENESIS (FORMATION OF DEPRESSION)
NIL: 0%, LOW: 1-25%, FAIR: 26-50%, MODERATE: 51-75% AND HIGH: 76-100%