



मौसम विज्ञान केंद्र, बंगलुरु
METEOROLOGICAL CENTRE, BENGALURU
भारत मौसम विज्ञान विभाग
INDIA METEOROLOGICAL DEPARTMENT
Tel: 080-22211118; 22235675; 2235725

Dated: 21.09.2021

Time of Issue: 1300 IST

IMPACT BASED FORECAST FOR HEAVY RAINFALL OVER BENGALURU CITY & NEIGHBOURHOOD

Observed Rainfall in the city as follow:

Bangalore City: from 0830 IST of 20.09.2021 to 0830 IST of 21.09.2021: 53.4 mm
Bangalore BIAL: from 0830 IST of 20.09.2021 to 0830 IST of 21.09.2021: 15.6 mm
Bangalore HAL: from 0830 IST of 20.09.2021 to 0830 IST of 21.09.2021: 19.2 mm

Date	21.09.2021	22.09.2021
Heavy Rainfall Forecast	NIL	NIL
Local Forecast	Generally cloudy sky. Few spells of rain/thundershowers very likely	Generally cloudy sky. Few spells of rain/thundershowers very likely
Impact Expected	<ul style="list-style-type: none">Wet and slippery roadsWater logging/flooding in parts of low lying areas.	<ul style="list-style-type: none">Wet and slippery roadsWater logging/flooding in parts of low lying areas.
Activity Suggested	<ul style="list-style-type: none">Traffic may be regulated effectively.	<ul style="list-style-type: none">

Duty Officer
For Director in Charge

COLOUR CODES	
Risk Level	Response
Very Low	No Action
Low	Be Updated
Medium	Be Prepared
High	Take Action

Legends:
RAINFALL INTENSITY

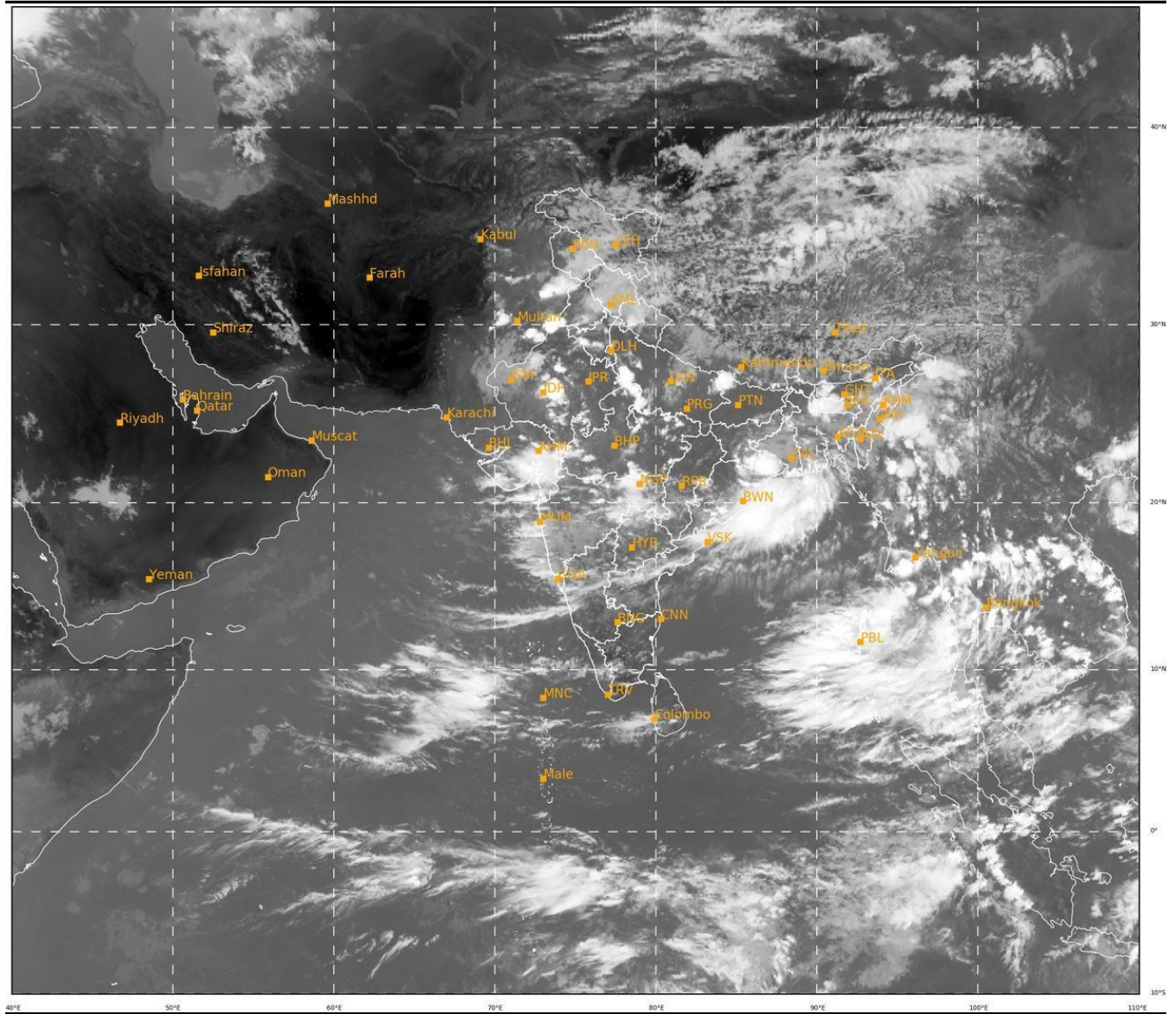
Terminology	Rainfall Range	Terminology	Rainfall Range in mm
Light Spell	1 cm/hr	Very Intense Spell	3-5 cm/hr
Moderate Spell	1-2 cm/hr	Extremely Intense Spell	5-10 cm/hr
Intense Spell	2-3 cm/hr	Cloud Burst	>10 cm/hr

RAINFALL CATEGORIES

Terminology	Rainfall Range in mm	Terminology	Rainfall Range in mm
Very Light Rainfall	Trace - 2.4	Heavy Rainfall	64.5 - 115.5
Light rainfall	2.5 - 15.5	Very Heavy Rainfall	115.6 - 204.4
Moderate Rainfall	15.6 - 64.4	Extremely Heavy Rainfall	>= 204.5

SAT : INSAT-3D IMG
IMG_TIR2 12.0 um
LIC Mercator

21-09-2021/(0730 to 0756) GMT
21-09-2021/(1300 to 1326) IST



IMD, DELHI

