

Consolidated Agro-Meteorological Advisory for the farmers of Uttarakhand issued by Meteorological Centre, Dehradun with the cooperation of A.M.F.U. Ranichauri, Pantnagar and Roorkee valid from 26-11-2021 (08:30 IST) till 01-12-2021 (08:30 IST):

**PART –I: WEATHER INFORMATION**

<b>Past weather from 19-11-2021 to 25-11-2021</b>	<b>Weather forecast valid from 26-11-2021 (08:30 IST) till 01-12-2021 (08:30 IST)</b>
---	---

**HILLY REGION: A.M.F.U. RANICHAURI**

During the week, sky conditions remained mainly clear. As per the meteorological data received from A.M.F.U. Ranichauri, dry weather prevailed during the week. Maximum temperature was between 14.5°C to 19.2°C. The minimum temperature was between 2.8°C to 4.4°C. Relative humidity was between 46% and 100%. Average wind speed was between 4 km/hour to 5 km/hour.	Very light to light rain/snowfall likely to occur at isolated places especially in higher reaches of Uttarkashi, Rudraprayag, Chamoli, Bageshwar & Pithoragarh on 26 <sup>th</sup> November, 2021. Dry weather likely to prevail in Uttarakhand during rest of the period.
--	--

**A.M.F.U-PANTNAGAR (UDHAM SINGH NAGAR AND NAINITAL DISTRICT)**

During the week, sky conditions remained mainly clear to generally cloudy. As per the meteorological data of departmental observatory Pantnagar, dry weather prevailed during the week. Maximum temperature was between 24.0°C to 28.2°C and the departure from the normal was between -2°C and 1°C. The minimum temperature was between 7.1°C to 15.0°C and departure from the normal was between -2°C and 5°C. Relative humidity was between 58% and 98%. Average wind speed was between 0 km/hour to 2 km/hour.	Dry weather likely to prevail in Uttarakhand during the period. Fog/shallow fog likely to occur in parts of plains of Kumaon region especially in Udham singh nagar district of Uttarakhand during morning hours on 26 <sup>th</sup> November, 2021.
--	--

**A.M.F.U-ROORKEE (HARIDWAR, HILLY AREAS OF DEHRADUN AND PAURI DISTRICTS)**

During the week, sky conditions remained mainly clear. As per the meteorological data of departmental observatory Dehradun, dry weather prevailed during the week. Maximum temperature was between 24.7°C to 28.0°C and the departure from the normal was between 1°C and 3°C. The minimum temperature was between 10.4°C to 11.4°C and departure from the normal was between 1°C and 1°C. Relative humidity was between 68% and 93%. Average wind speed was between 0 km/hour to 2 km/hour.	Dry weather likely to prevail in Uttarakhand during the period.
--	---

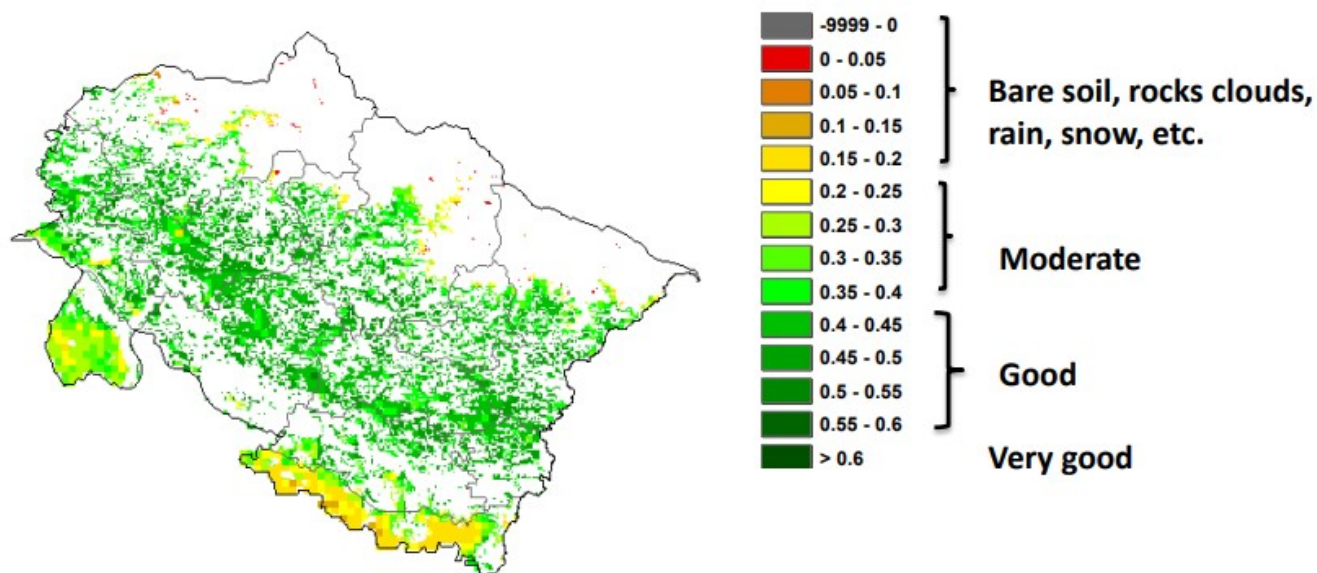
**Outlook for next two days:** No large change.

**WARNING:**

**NIL**

**NOAA/VIIRS/BLENDED NDVI Composite ending on Week no 46  
(12.11.2021 to 18.11.2021) over Agricultural region**

**Uttarakhand**



Agriculture vigour is good over most places of the state.

Source: <https://www.star.nesdis.noaa.gov>

**PART –II: ZONAL AGRO-METEOROLOGICAL ADVISORY BASED ON THE ADVISORY  
ISSUED BY A.M.F.U. RANICHAURI, PANTNAGAR AND ROORKEE**

**HILLY REGION: A.M.F.U. RANICHAURI**

Crops/ Animal Husbandry	Crop stage	Agro Meteorological Advisory
GENERAL ADVICE	-	<ul style="list-style-type: none"> <li>Farmers are advised to complete the sowing of Rabi crops as early as possible. In vegetable crops, weeding and hoeing should be done. Apply light irrigation should be done as per requirement. Carry out the field cleaning and demarcation for planting winter fruit garden. Maintain COVID-19 protocols during agricultural operations.</li> <li>To protect small fruit plants from frost, make a suitable structure with wood and grass etc.</li> </ul>
ONION	-	Carry out field preparation for the transplant of seedling. At the time of last ploughing, apply wormi compost / FYM with mixing bioagents.
WHEAT	-	First irrigation should be done 21-25 days after sowing at the time of Crown Root Initiation (main root formation). After irrigation, apply 1 kg urea when optimum moisture in the soil.
KIWI	-	Harvest the fruit and do grading, packaging and marketing.
LENTIL	-	Weeding work should be done in the crop sown last month.
POULTRY	-	Add a thick (3-6") layer of straw, sawdust, or wood shavings to the floor.

(CHICKEN)		Brooder should be installed to prevent cold.
Animal Husbandry	COW	To protect the animals from cold, spread a thick layer of dry grass/leaves inside the animal shelter. Rubber mats can be used for cattle bedding.

**A.M.F.U-PANTNAGAR (UDHAM SINGH NAGAR AND NAINITAL DISTRICT)**

<b>Crops/ Animal Husbandry</b>	<b>Crop stage</b>	<b>Agro Meteorological Advisory</b>
GENERAL ADVICE	-	<ul style="list-style-type: none"> <li>• Farmers are advised to irrigate the crop as per requirement. To prevent various diseases of Rabi crops, the seeds must be treated before sowing.</li> <li>• Field should be cleaned properly before sowing of rabi crop and use fully decomposed FYM or compost before sowing of crops and vegetable as it improves the physical and biological properties of soil and thus increases the water retention capacity as well as nutrient status of the soil. To save the animals from the cold, proper arrangement of the animal shed should be done.</li> </ul>
GARLIC	-	<b><u>Nainital</u></b> Light irrigation should be given after weeding and hoeing in the crop sown in the last month.
LITCHI	-	<b><u>Udham Singh Nagar</u></b> Irrigation should not be given to fruitful litchi plants at the time of flowering because it creates difficulty in the flowering. But irrigation can be given in the new plants which are not in the flowering stage.
SUGARCANE	-	<b><u>Udham Singh Nagar</u></b> In winter sugarcane, weeding and hoeing is done on 25-30 days of sowing. Irrigation should be done at 30-40 days after sowing as required.
BARLEY	-	<b><u>Udham Singh Nagar</u></b> In the second fortnight of the month, sow barley in irrigated condition.
WHEAT	-	<b><u>Nainital</u></b> First irrigation in wheat should be given at 20-25 days after sowing during Crown Root Initiation. Wheat requires irrigation at this stage. The remaining half dose of urea should be given at this stage after irrigation. In case of delayed wheat, sowing can be done in the second fortnight of the month. <b><u>Udham Singh Nagar</u></b> In plains, early maturing varieties are sown in the second fortnight of November.
MANGO	-	<b><u>Nainital</u></b> In plains, clearing and ploughing of orchard should be done at the earliest. On the occurrence of web insect, cleaning of web should be done by using web machine and Quinalphos @ 2ml/liter should be sprayed.
RAPESEED	-	<b><u>Udham Singh Nagar</u></b> Light irrigation should be given in the crop at the time of grain filling in timely sown crop and before flowering in late sown crop.
MUSTARD	-	<b><u>Nainital</u></b> Light irrigation should be given when the yellow mustard crop is one month old. <b><u>Udham Singh Nagar</u></b> Light irrigation should be given in the crop at the time of grain filling in timely sown crop and before flowering in late sown crop.
ONION	-	<b><u>Nainital</u></b> In Bhavar region, use 7 to 8 weeks old seedlings for transplanting onion. <b><u>Udham Singh Nagar</u></b> Prepare onion field and mix rotten dung manure of 25 to 30 quintal per hectare 3 to 4 weeks before planting. For transplanting onion, use 7 to 8

		weeks old seedlings. Transplant onions at a distance of 15 × 10cm in case of large onion and at 8x5 cm in case of small.
TOMATO	-	<b><u>Nainital</u></b> At present, the problem of late blight disease is being seen in the tomato crop. So to control the late blight disease in tomato crop, spray Mancozeb @ 3 g/lit of water. If the disease increases, apply curzate @ 2.5 gm per liter.
Animal Husbandry	BUFFALO	The buffalo's gestation period is from October-November, so during these months, observe the symptoms of gestation period in female buffaloes in the morning and evening, so that the process of insemination can be completed in time.

#### A.M.F.U-ROORKEE (HARIDWAR, HILLY AREAS OF DEHRADUN AND PAURI DISTRICTS)

Crops/ Animal Husbandry	Crop stage	Agro Meteorological Advisory
GENERAL ADVICE	-	<ul style="list-style-type: none"> <li>• Farmers are advised to continue the sowing of wheat crop.</li> <li>• Looking to the dry weather condition during this week therefore farmers are advised to irrigate existing crops.</li> </ul>
MUSTARD	-	Irrigate the mustard crop if required. Watch the crop regularly for any pest/ diseases, spray pesticides/insecticides if appears.
WHEAT	-	Farmers are advised to continue the sowing of wheat crop. Those who have not prepared the field for sowing of wheat they are advised for field preparation for the sowing of wheat.
POTATO	-	Sowing of medium duration varieties such as K. Sinduri, Chipsona-1 and 2. Potato seed should be keep out from cold storage, before 7-10 days of sowing.
SUGARCANE	-	Irrigate the sugarcane crop if required. Watch the crop regularly for any pest/ diseases, spray pesticides/insecticides if appears.
Animal Husbandry	COW	Vaccinate the cattle against the foot and mouth disease after consultation with veterinarian.

(बिक्रम सिंह)  
हेड /वैज्ञानिक 'एफ़'  
मौसम विज्ञान केंद्र, देहरादून

**LEGENDS:**

<b>WARNING (TAKE ACTION)</b>	<b>WATCH(BE UPDATED)</b>
<b>ALERT(BE PREPARED)</b>	<b>NO WARNING (NO ACTION)</b>

INTENSITY		DISTRIBUTION		PROBABILITY OF OCCURRENCE	
<b>VERY LIGHT</b>	<b>TRACE - 2.4 mm</b>	<b>ISOLATED</b>	<b>ISOLATED (UPTO 25% AREA)</b>	<b>UNLIKELY</b>	<b>Up to 25%</b>
<b>LIGHT</b>	<b>2.5- 15.5 mm</b>	<b>FEW</b>	<b>SCATTERED (BETWEEN 25-50% AREA)</b>	<b>LIKELY</b>	<b>26 to 50%</b>
<b>MODERATE</b>	<b>15.6 – 64.4 mm</b>	<b>MANY</b>	<b>FAIRLY WIDE SPREAD (BETWEEN 50-75% AREA)</b>	<b>VERY LIKELY</b>	<b>51 to 75%</b>
<b>HEAVY</b>	<b>64.5- 115.5 mm</b>	<b>MOST</b>	<b>WIDE SPREAD (MORE THAN 75% AREA)</b>	<b>MOST LIKELY</b>	<b>Above 75%</b>
<b>VERY HEAVY</b>	<b>115.6- 204.4 mm</b>				
<b>EXTREMELY HEAVY</b>	<b>&gt; 204.4 mm</b>				