

Global Numerical Weather Prediction: Progress and future directions

Andy Brown

Director of Research, ECMWF



8.835 weather related disasters

1.94 million deaths

\$2.4 trillion economic loses

How we forecast the weather

Global Observations



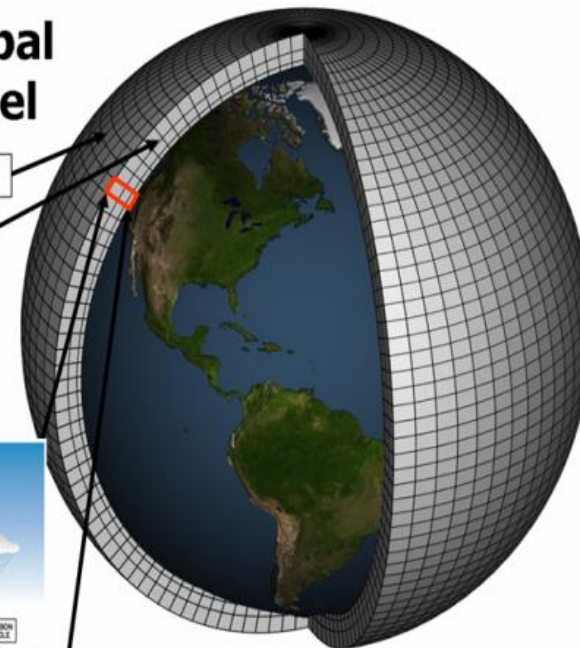
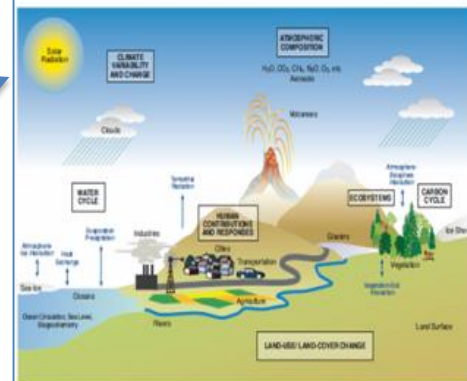
Knowledge

$$\frac{du}{dt} = \frac{\partial p}{\partial x} - fv$$
$$\frac{dv}{dt} = \frac{\partial p}{\partial y} + fu$$
$$p = RT$$
$$\rho$$

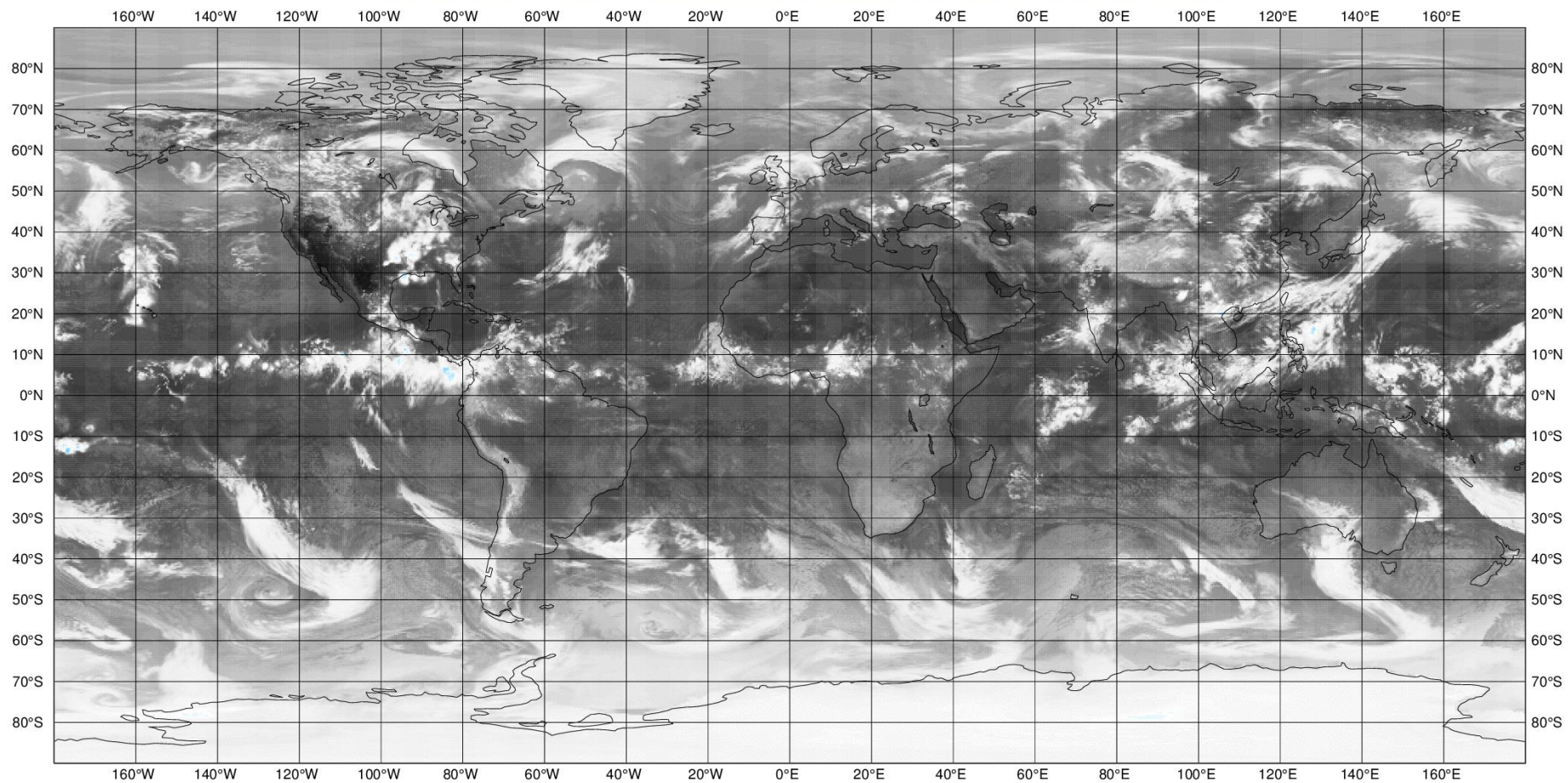
Schematic for Global Atmospheric Model

Horizontal Grid (Latitude-Longitude)

Vertical Grid (Height or Pressure)

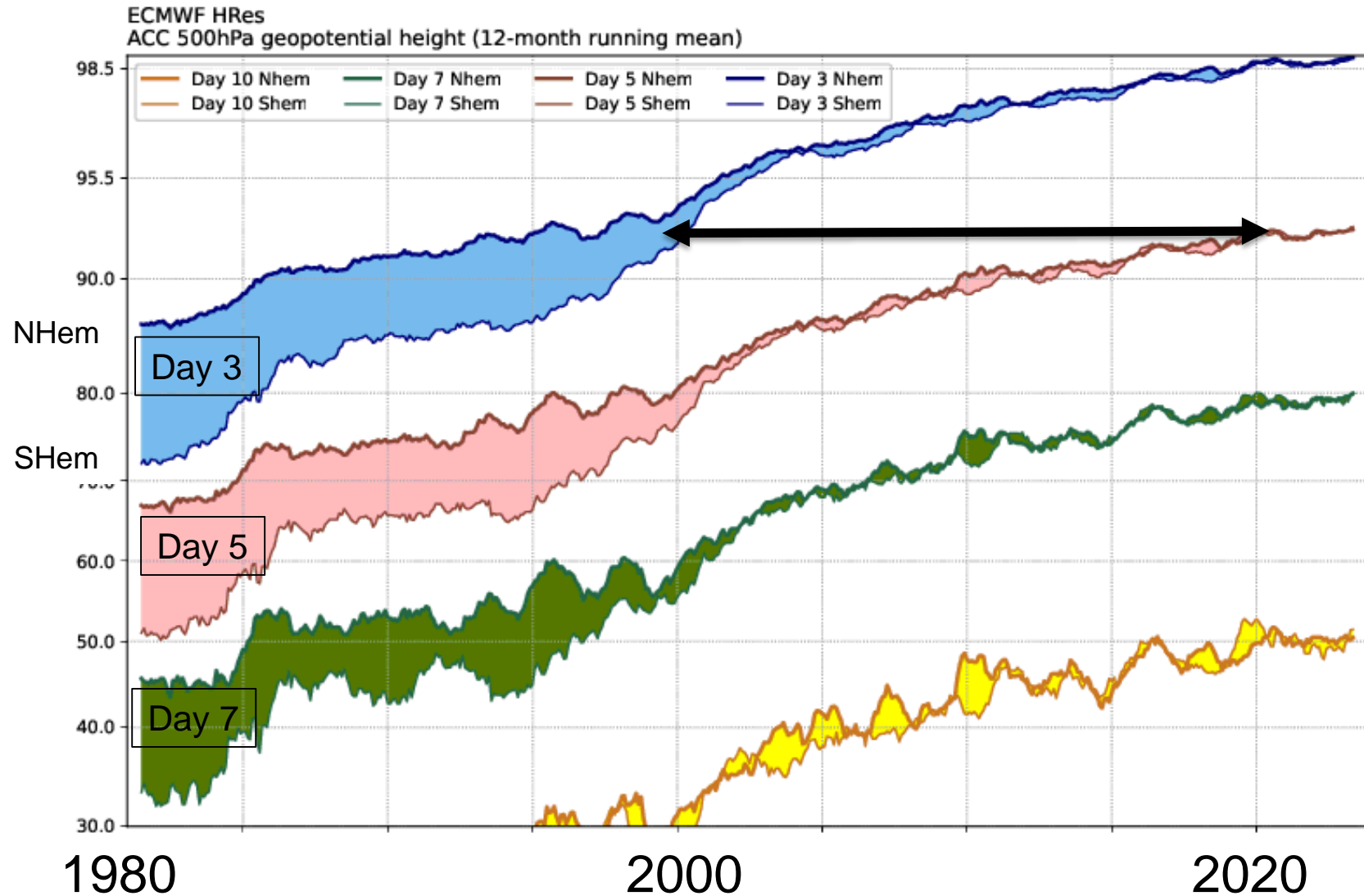


Monday 24 June 2019 00 UTC ecmf t+0 VT:Monday 24 June 2019 00 UTC surface Cloudy brightness temperature



Dramatically improving accuracy.....

Improving



What has made things better?

Better science

- Clever people!
- Partnerships

Bigger supercomputers

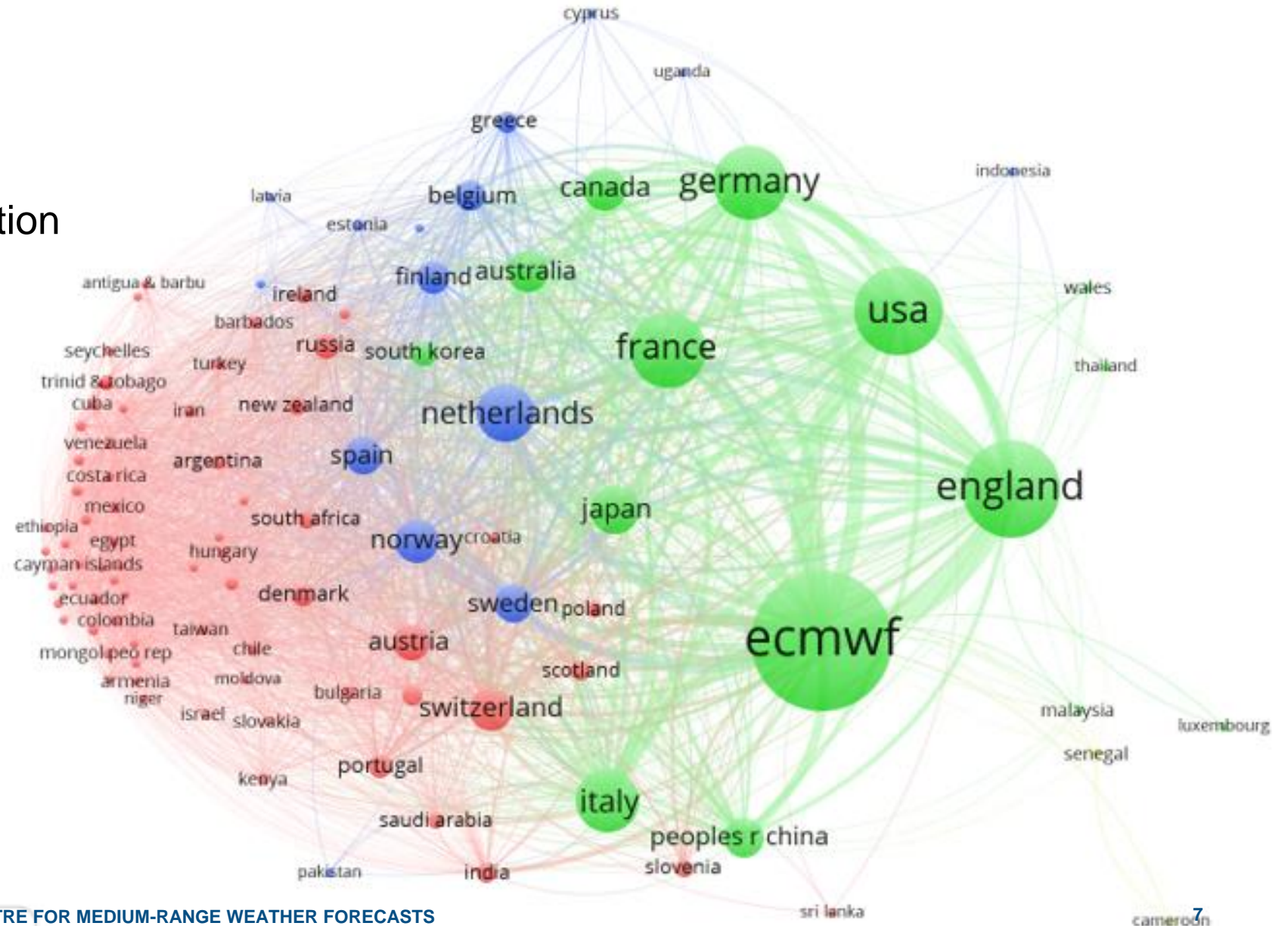
- More expensive choices possible (e.g. model resolution)

More and better observations

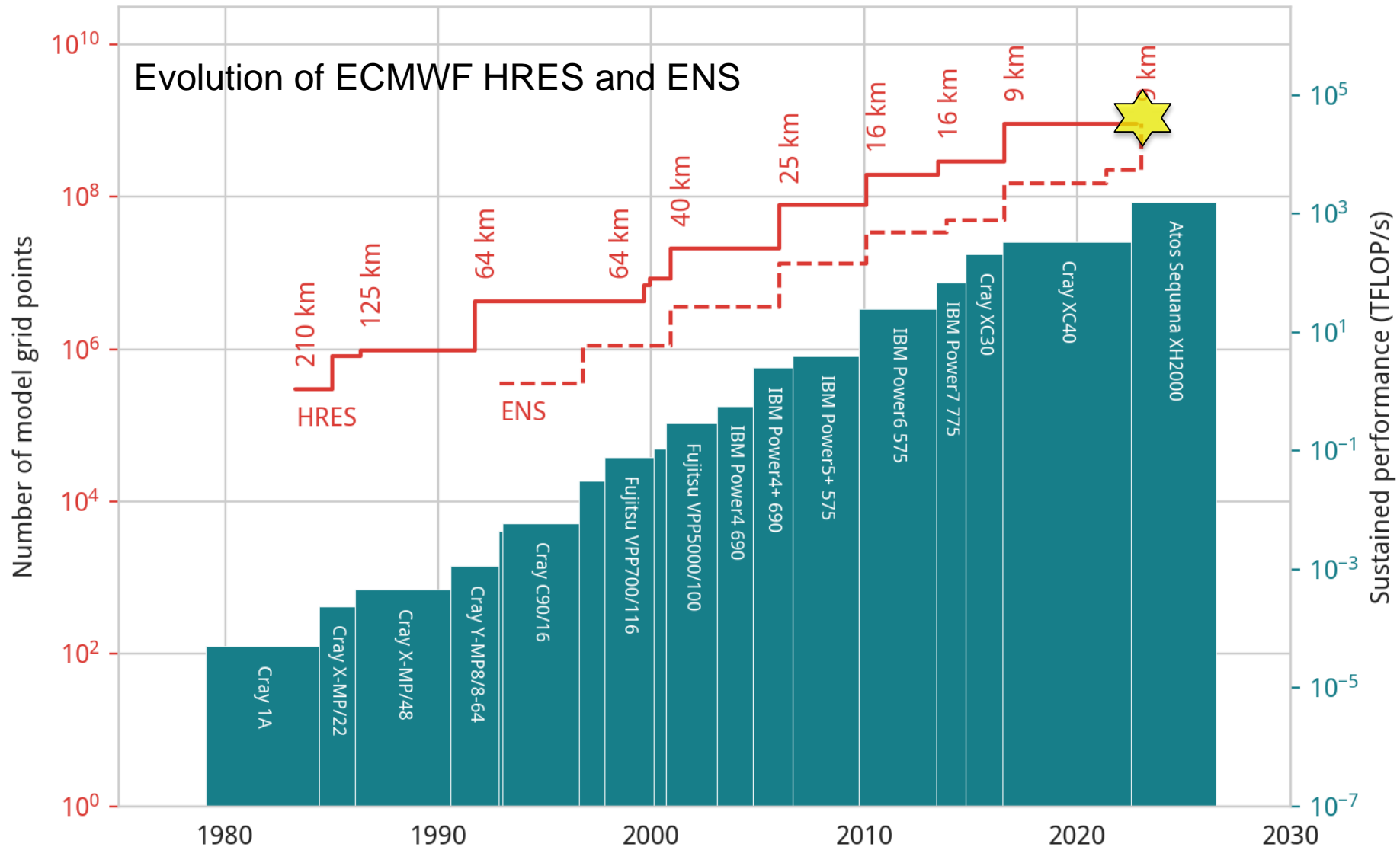
- Number, accuracy, variety

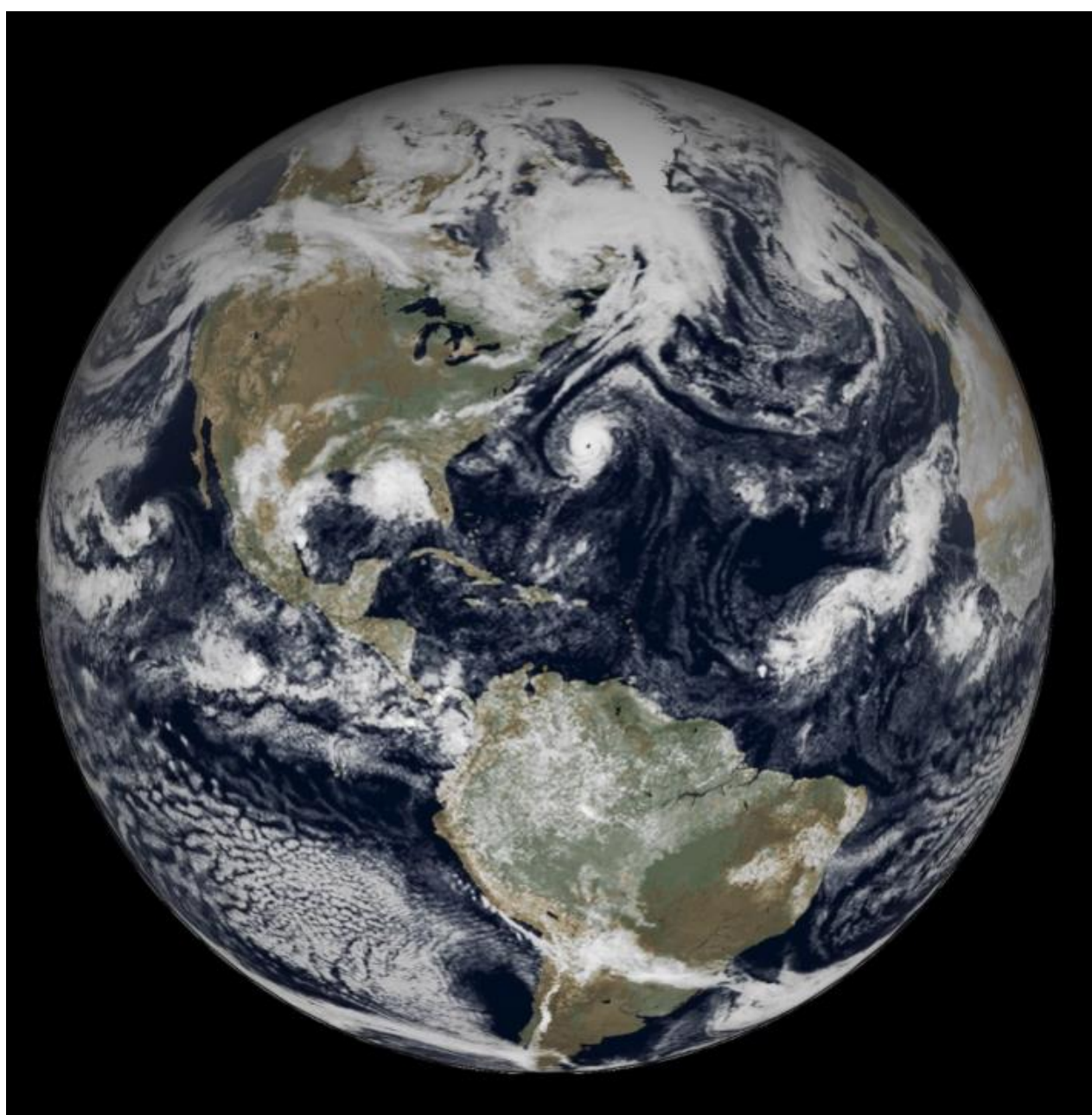
Global collaboration

ECMWF publication
co-authorship

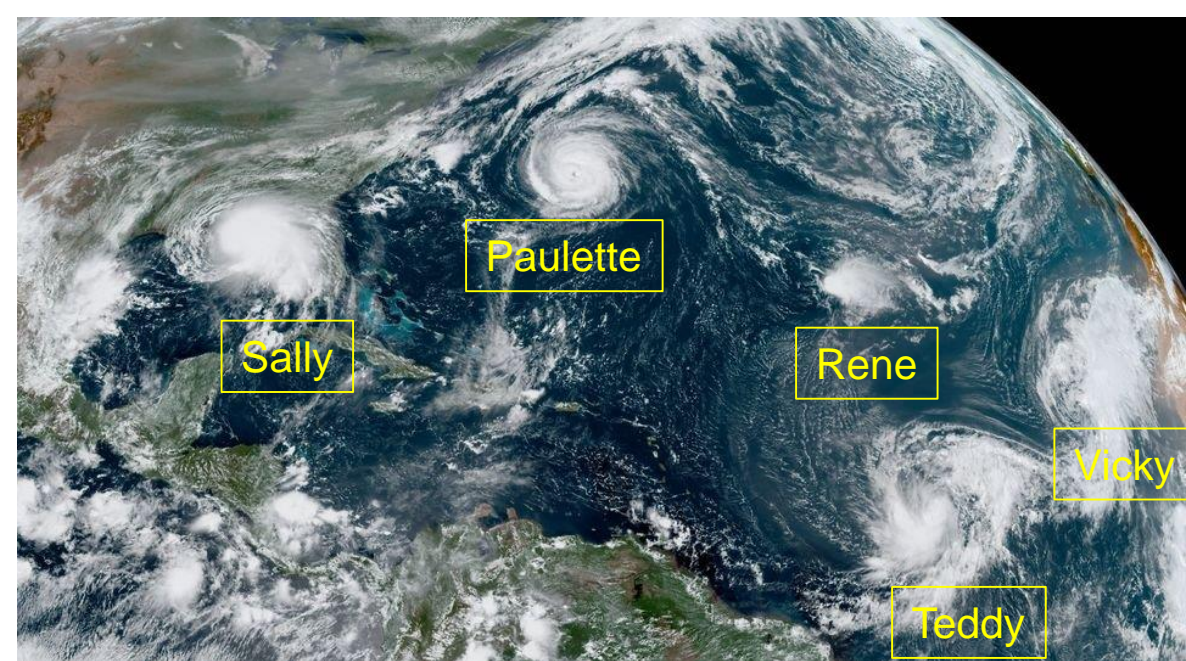


Current and future directions: Focus on ensembles





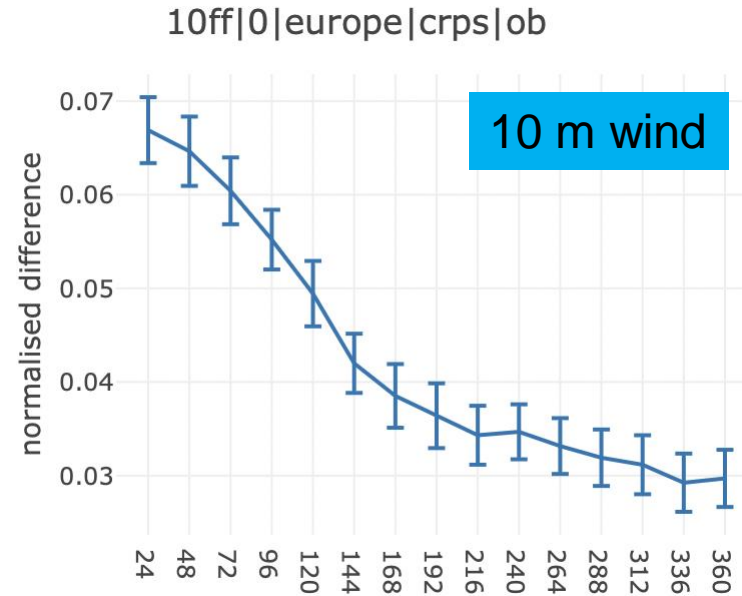
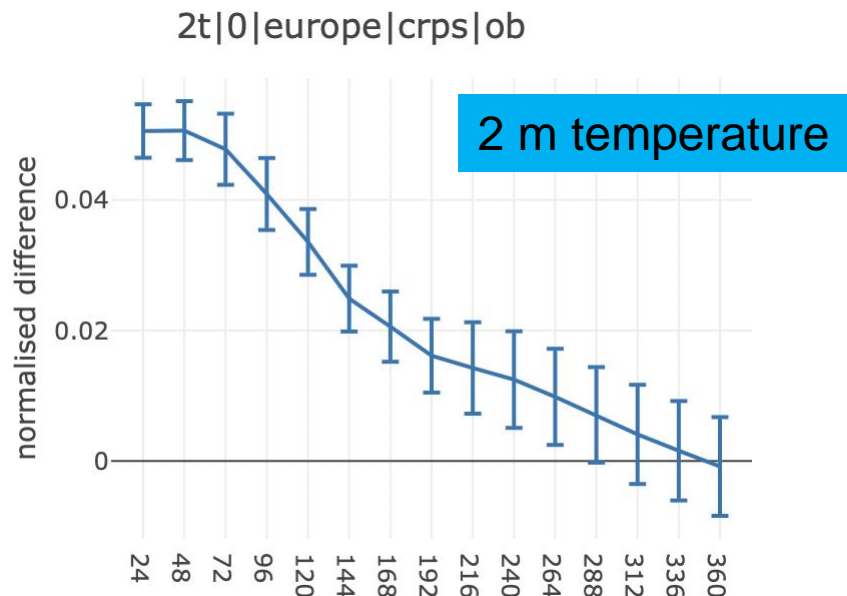
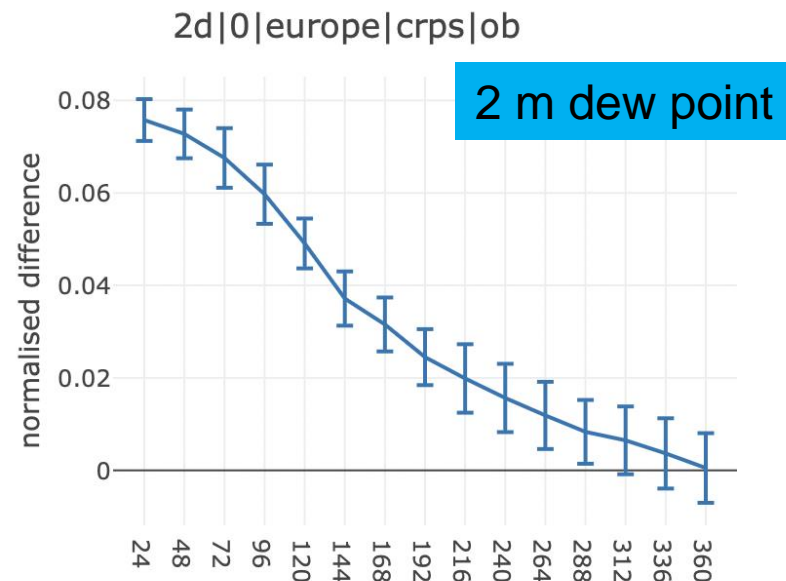
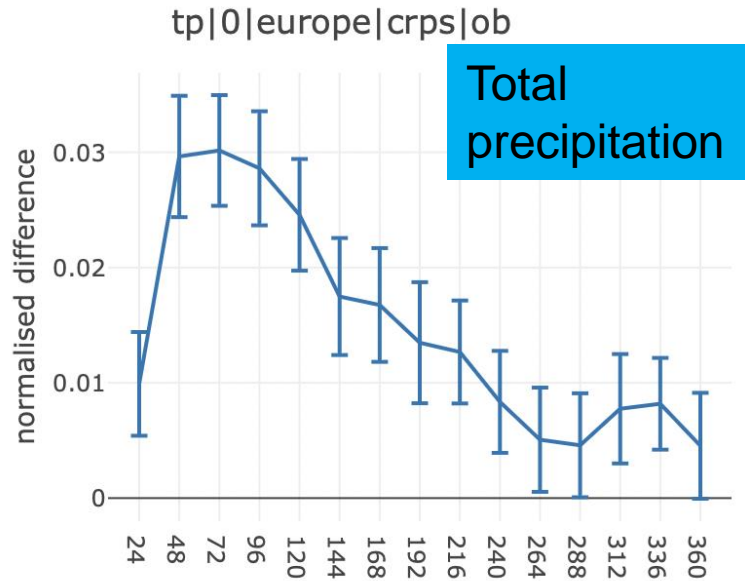
20200913 00 UTC + 41 h



NOAA

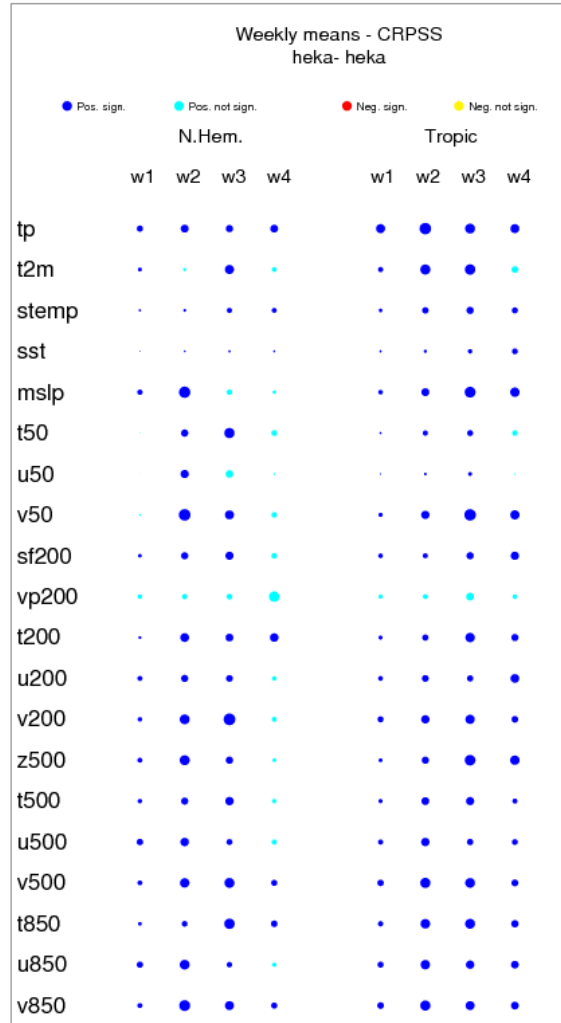
Cycle 48r1:
Delivering an operational 9 km
medium-range global ensemble!

Current and future directions: Focus on user-relevant quantities



Current and future directions: Focus on extended-range forecasts

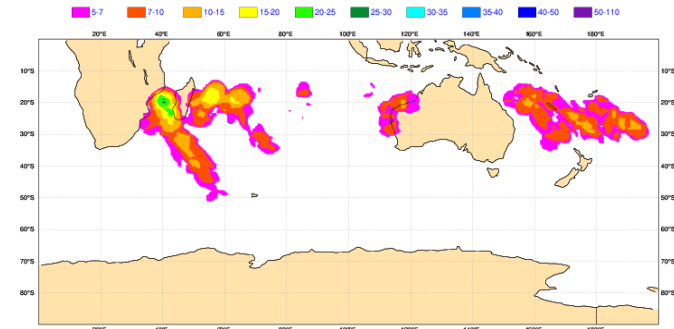
Impact of increase of ensemble size



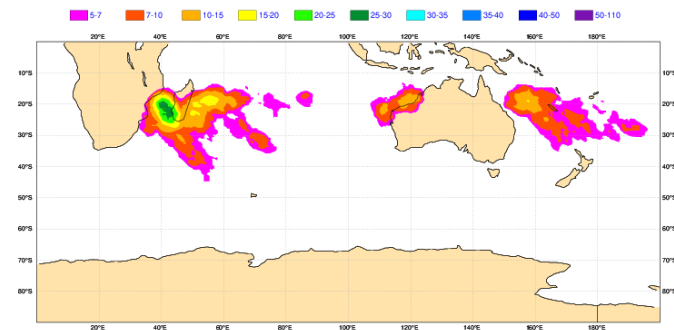
● 0.01

Tropical storm strike probability week 4 forecast
Start date:7/1/2021 – verification 1-7 Feb. 2021

50 members



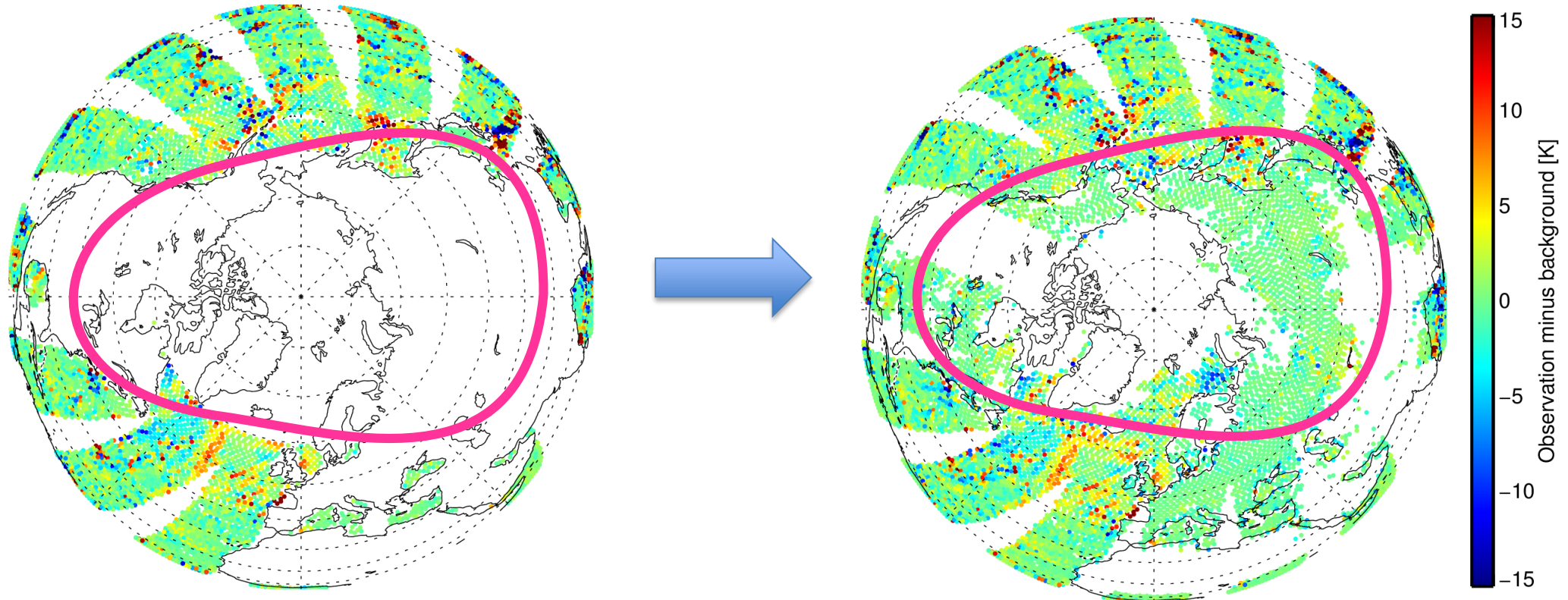
100 members



Cycle 48r1:

From a 50 member ensemble twice per week to a 100 member ensemble every day

Current and future directions: Learning to use more difficult observations



Current and future directions: The rise of machine learning

Post-processing and calibration of traditional models

Hybrid modelling (e.g. online correction of learned errors)

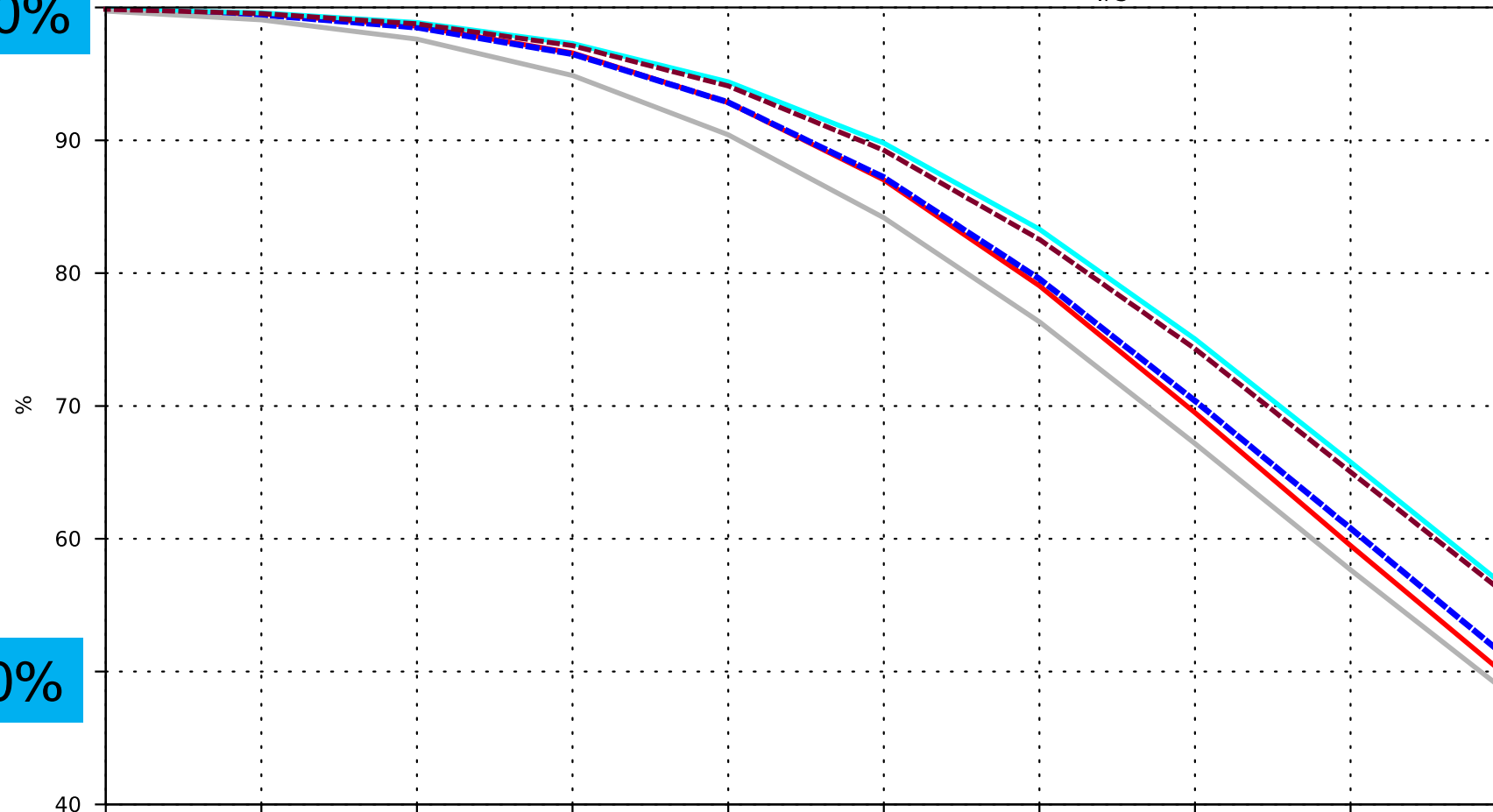
Complete model replacement

Anomaly correlation | 500hPa geopotential
NHem Extratropics

20220101 00z to 20221231 00z | oper mean_fair

- AIFS
- FourCastNetv2-small
- GraphCast
- Pangu-Weather
- IFS

100%



50%

Day 1 Forecast Range Day 10

← Data-driven AIFS
← Traditional IFS



 ECMWF