



भारत सरकार/Government of India  
पृथ्वी विज्ञान मंत्रालय / Ministry of Earth Sciences  
भारत मौसम विज्ञान विभाग / India Meteorological Department  
मौसम विज्ञान केंद्र, गोवा / Meteorological Centre, Goa  
आलतिनो पणजी -403001/ Altinho Panaji -403001  
वेबसाइट/ Website: <https://mausam.imd.gov.in/goa/>





Dated: 04-12-2024  
Time of Issue: 1430 Hrs IST

## IMPACT BASED FORECAST FOR GOA STATE

### 1. WEATHER FORECAST AND WARNINGS FOR DISTRICTS OF GOA

#### North Goa and South Goa

| Day                           | Distribution | Colour code | पूर्वानुमान<br>Forecast  | चेतावनी<br>Warning   |
|-------------------------------|--------------|-------------|--|--|
| दिन १/<br>DAY 1<br>04/12/2024 | Isolated     |             | • Light to moderate rainfall is very likely over North Goa & South Goa districts of the state. | No Weather Warnings  |
| दिन २/<br>DAY 2<br>05/12/2024 | Scattered    |             | • Light to moderate rainfall is very likely over North Goa & South Goa districts of the state. | Thunderstorm accompanied with lightning very likely at isolated places over North Goa & South Goa districts. |
| दिन ३/<br>DAY 3<br>06/12/2024 | Dry          |             | • Weather is very likely to be dry over North Goa & South Goa districts of the state.          | No Weather Warnings  |
| दिन ४/<br>DAY 4<br>07/12/2024 | Dry          |             | • Weather is very likely to be dry over North Goa & South Goa districts of the state.          | No Weather Warnings  |
| दिन ५/<br>DAY 5<br>08/12/2024 | Dry          |             | • Weather is very likely to be dry over North Goa & South Goa districts of the state.          | No Weather Warnings  |

|                               |     |   |   |  |
|-------------------------------|-----|---|---|--|
| दिन ६/<br>DAY 6<br>09/12/2024 | Dry |  | • Weather is very likely to be dry over North Goa & South Goa districts of the state. |  |
| दिन ७/<br>DAY 7<br>10/12/2024 | Dry |  | • Weather is very likely to be dry over North Goa & South Goa districts of the state. |  |

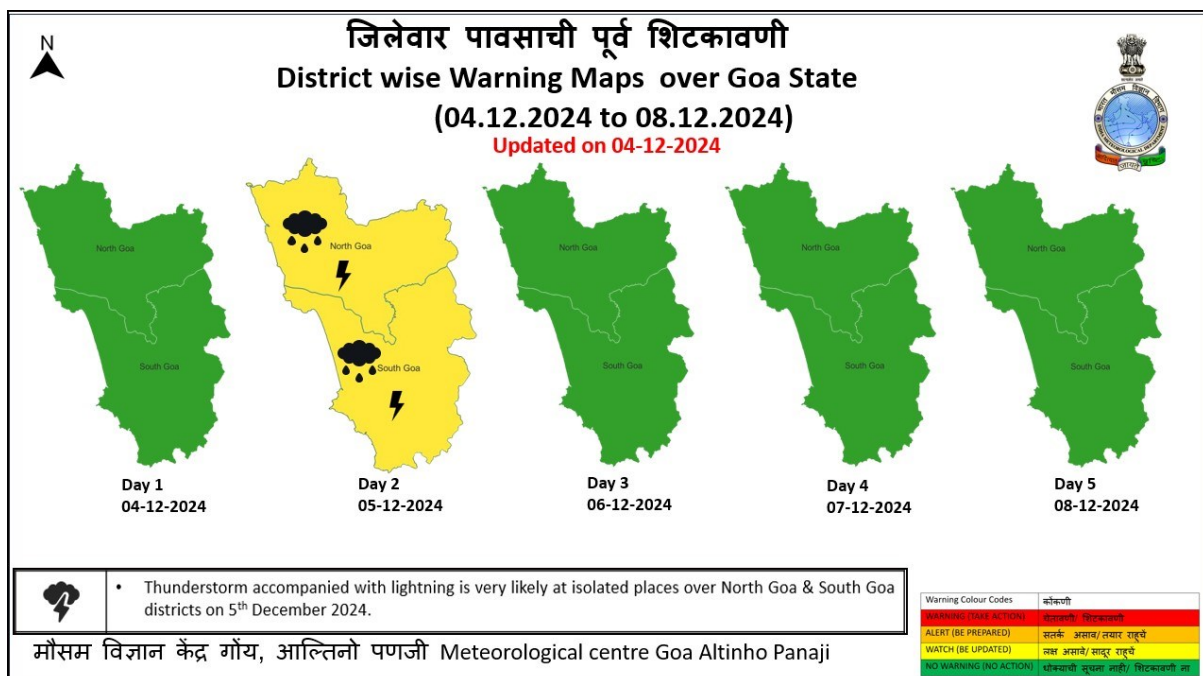
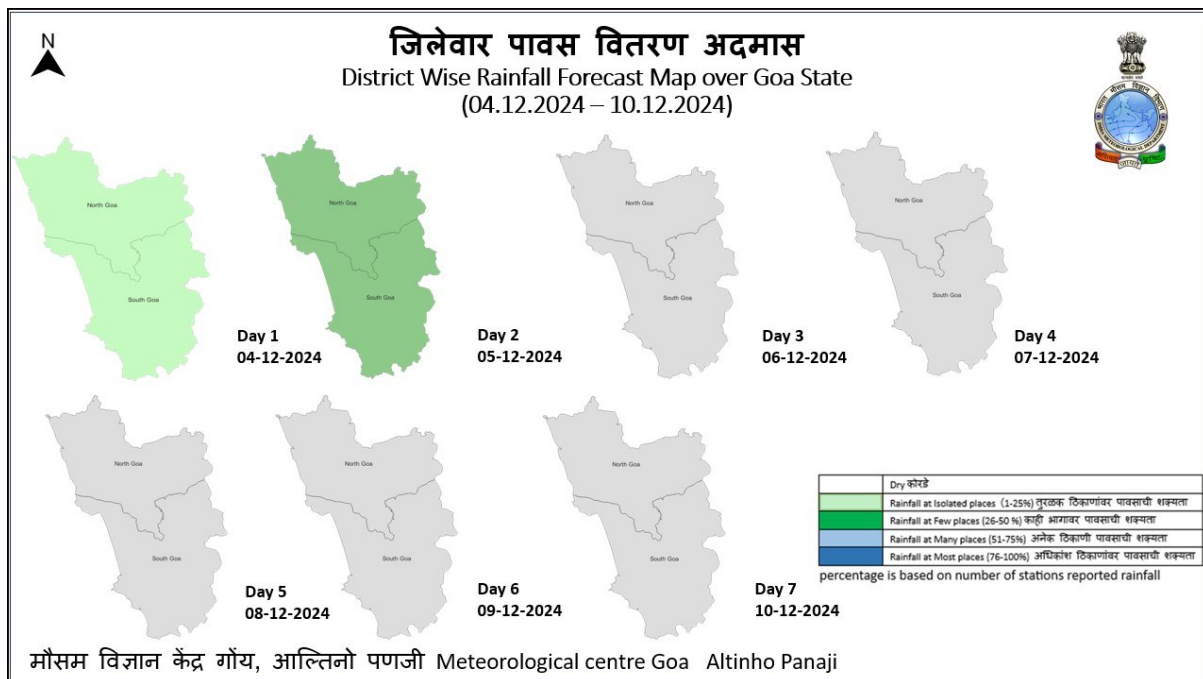
#### Legends

|                     |                              |                          |                           |                                 |
|---------------------|------------------------------|--------------------------|---------------------------|---------------------------------|
| Dry<br>(0 stations) | Isolated<br>(< 25% stations) | Few<br>(25-50% stations) | Many<br>(51-75% stations) | Most places<br>(≥ 75% stations) |
|---------------------|------------------------------|--------------------------|---------------------------|---------------------------------|

Green: No warning Yellow: Be updated Orange- Be prepared Red- Take action

Probability of Occurrence (%): Unlikely:<25%; Likely:25-50%; Very Likely:50-75%; Most Likely:> 75%

## 2. WEATHER FORECAST AND WEATHER WARNINGS ISSUED BY IMD GOA DATED 04-12-2024



### 3. FISHERMEN WARNING FOR MAHARASHTRA-GOA COAST ISSUED AT 1300 IST ON DATE: 04-12-2024:

| SN | WEATHER PARAMETER  | WARNING   |
|----|--|---|
| 1  | WARNING FOR COASTAL AREAS FOR NORTH- MAHARASHTRA COAST (UPTO 75KM FROM THE COAST)    | NIL   |
| 2  | WARNING FOR COASTAL AREAS FOR SOUTH MAHARASHTRA-GOA COAST (UPTO 75KM FROM THE COAST) | Squally weather with wind speed 35 kmph To 45 kmph gusting to 55 kmph is likely to prevailing along and off Goa coasts on 3rd December. |
| 3  | HIGH WAVE WARNING FROM INCOIS: GOA   | NIL   |
| 4  | PORT WARNING FOR MAHARASHTRA - GOA COAST   | NIL   |

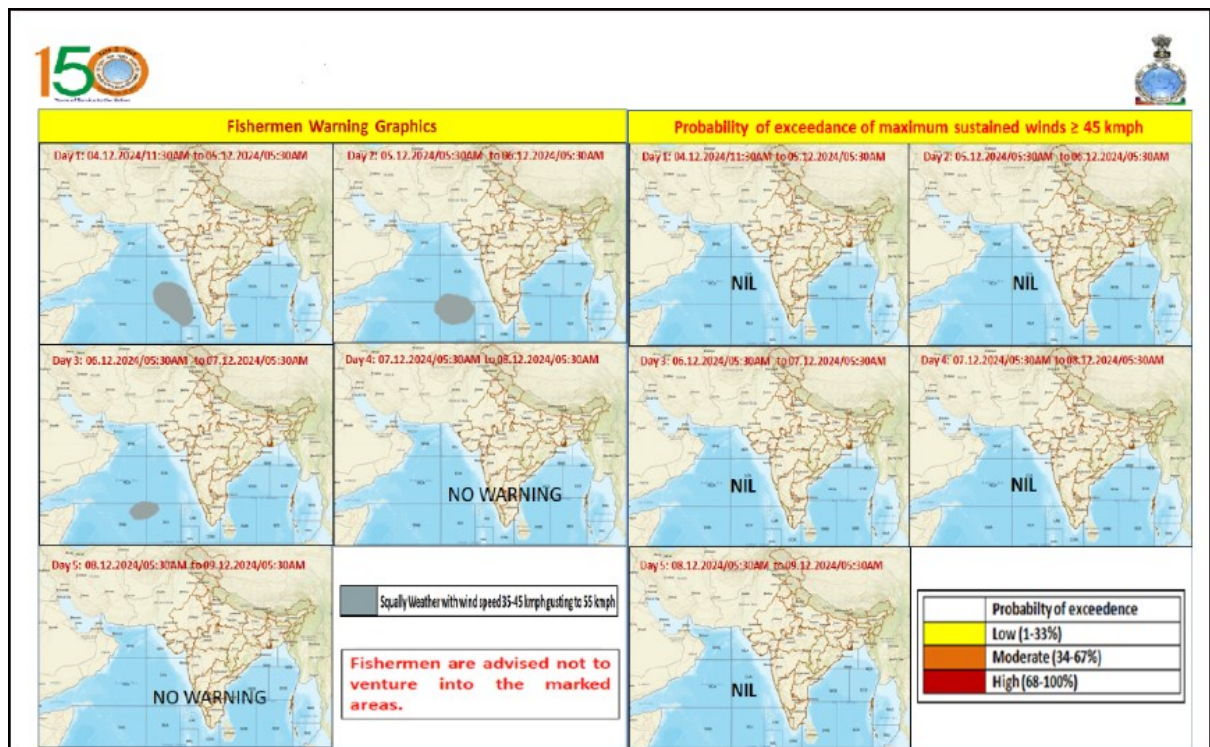
In addition to the above high wave warnings, high wave & ocean current alerts can be obtained from the below mentioned link. For further details, kindly visit INCOIS website: <https://incois.gov.in/portal/osf/hwa.jsp>

### 4. WARNING FOR HIGH SEA AND OTHER COASTS (BEYOND 75KM FROM THE COAST) ISSUED AT 1300 IST ON DATE: 04-12-2024:

| DAY             | DATE       | WARNING  |
|-----------------|------------|--|
| दिन १/<br>DAY 1 | 04/12/2024 | <ul style="list-style-type: none"> <li>Squally weather with wind speed 35 kmph to 45 kmph gusting to 55 kmph is likely to prevailing over Lakshadweep area, adjoining southeast Arabian sea, southern parts of Eastcentral Arabian sea. .</li> <li>Fishermen are advised not to venture into these areas during above mentioned period.</li> </ul> |

|                 |            |   |
|-----------------|------------|---|
| दिन 2/<br>DAY 2 | 05/12/2024 | <ul style="list-style-type: none"> <li>• Squally weather with wind speed 35 kmph To 45 kmph gusting to 55 kmph is likely to prevailing over northern parts of Southeast Arabian sea adjoining Lakshadweep area and adjoining east central And southwest Arabian sea area.</li> <li>• <b>Fishermen are advised not to venture into these areas during above mentioned period.</b></li> </ul> |
| दिन 3/<br>DAY 3 | 06/12/2024 | <ul style="list-style-type: none"> <li>• Squally weather with wind speed 35 kmph To 45 kmph gusting to 55 kmph is likely to prevailing over northern parts of Central parts of south Arabian sea area.</li> <li>• <b>Fishermen are advised not to venture into these areas during above mentioned period.</b></li> </ul>  |
| दिन 4/<br>DAY 4 | 07/12/2024 | NIL   |
| दिन 5/<br>DAY 5 | 08/12/2024 | NIL   |

## 5. FISHERMEN WARNINGS GRAPHICS



**Probable impact of Thunderstorm with lightning activity on 5<sup>th</sup> December 2024 over Panaji city, North Goa and South Goa Districts**

- **Possibility of Cloud to ground lightning**
- **Some pooling of water on roads and low-lying areas**
- **Rough sea conditions along the coast**
- **Possibility of traffic congestions**
- **Short term water logging/inundation on roads and low-lying areas**
- **Possibility of water inundation on agriculture fields**
- **Fall of weak trees and weak structures, trees may uproot, breaking of branches and major damage to horticulture crops**
- **Localized and short-term disruption to municipal services (water, electricity, etc.)**
- **Temporary fall in visibility during intense spells of rain**
- **Community services may be affected**

**Probable impact of heavy rainfall North and South Goa**

**General**

- **Visibility may become poor due to intense spell of rainfall leading to traffic congestion.**
- **Temporary Disruption of traffic due to water logging in roads / leading to increased travel time.**
- **Uprooting of trees may cause damages to power sector.**
- **Possibility of damages to vulnerable structures due to heavy to very heavy rain.**
- **Partial Damages to Kutcha Houses and Huts due to uprooting of trees.**
- **Possibilities of Flash floods due to intense spell of rainfall.**
- **Water logging / flooding in some parts of low-lying areas.**
- **Landslides/mud slide/land slip very likely.**

- **Heavy rainfall may damage the standing crops and vegetables in the maturity stage.**
- **Lightning may injure people and cattle at open place.**
- **Dispersion of soil from the field and hence seed displacement and poor germination of seeds.**
- **Major Towns and City central will be Flooded.**
- **Flooding on major roads leads to traffic congestion.**
- **Short to long duration pumping required to remove excess water from low lying areas of Panaji city.**
- **Water logging in low lying areas.**
- **Localized flooding of roads and closure of underpasses in some localities.**
- **Community services like electricity, water etc. may affect.**
- **Power outage in some localities.**
- **Drain may overflow.**
- **Vulnerable structures may damage.**
- **Major damage to Kutch houses/roads/walls and huts.**
- **Slum areas along railway track, river and drain may severely affect.**
- **It may lead to riverine flooding in the catchment areas.**
- **Damage to horticulture crop, plantation and Kharif crops like rice, maize, vegetables etc.**
- **Rain may lead to crop lodging, so can destroy crop and quality of grain may also affect in the above areas.**
- **Landslides/mudslides and Damage to houses/Loss of life/ Falling of Trees**

**Action suggested**



- **Follow traffic advisories issued, if any.**
- **Avoid staying in vulnerable structure.**
- **Avoid going to the areas that face flooding/landslides problems.**
- **Tourist will have to be prevented from entering sea.**
- **Short term stoppage of ferry services during intense rainfall spells.**
- **People may shift from low lying areas to safer place.**
- **Avoid going to areas that faces water logging problems often.**
- **Check for traffic congestion on your route especially to the central parts of the city before start your journey.**
- **Stay indoors, close windows & doors and avoid travel if possible.**
- **Take safe shelters, do not take shelter under trees.**
- **Do not lie on concrete floors and do not lean against concrete walls.**
- **Unplug electrical/ electronic appliances.**
- **Immediately get out of water bodies.**
- **Keep away from all the objects that conduct electricity.**
- **Farming operations may be suspended during the event.**
- **Avoid grazing of animals in open field.**

**Legends:-**

\* Forecast and Warning for any day is valid from 0830 hours IST of day till 0830 hours IST of next day

| Intensity of Rainfall |                | हिन्दी / मराठी                    |
|-----------------------|----------------|-----------------------------------|
| Very Light            | 0.1 to 2.4 mm  | बहुत हल्की वर्षा / खूप हल्का पाऊस |
| Light                 | 2.5 - 15.5 mm  | हल्की वर्षा / हल्का पाऊस          |
| Moderate              | 15.6 - 64.4 mm | मध्यम वर्षा / मध्यम पाऊस          |

|                     |  |   |
|---------------------|--|---|
| Heavy               | 64.5 - 115.5 mm  | भारी वर्षा / जोरदार पाऊस                  |
| Very Heavy          | 115.6 - 204.4 mm   | बहुत भारी वर्षा / खूप जोरदार पाऊस         |
| Extremely Heavy     | ≥ 204.5 mm   | अत्यधिक भारी वर्षा / अत्यंत जोरदार पाऊस   |
| Exceptionally Heavy | When the amount is a value near about the highest recorded rainfall at or near the station for the month or season. However, this term will be used only when the actual rainfall amount exceeds 12 cm | असाधारण भारी वर्षा / असामान्य जोरदार पाऊस |

| Probability of Occurrence (%)              | हिन्दी           | मराठी           |
|--|------------------|-----------------|
| Unlikely                                   | संभावना नहीं     | शक्यता नाही     |
| Likely (26-50% probability)                | संभावित          | संभाव्य / शक्य  |
| Very Likely (51-75% probability)           | अधिक संभावना     | अधिक शक्यता     |
| Most Likely (Greater than 75% probability) | अत्याधिक संभावना | अत्याधिक शक्यता |

| Warning Colour Codes   | हिन्दी           | मराठी               |
|------------------------|------------------|---------------------|
| WARNING (TAKE ACTION)  | चेतावनी          | चेतावणी             |
| ALERT (BE PREPARED)    | सतर्क रहें       | सतर्क असावे         |
| WATCH (BE UPDATED)     | निगरानी रखें     | लक्ष असावे          |
| NO WARNING (NO ACTION) | कोई चेतावनी नहीं | धोक्याची सूचना नाही |