



Govt. of India / भारतसरकार
Ministry of Earth Sciences / पृथ्वीविज्ञानमंत्रालय
India Meteorological Department / भारतमौसमविज्ञानविभाग
Regional Meteorological Centre / क्षेत्रीयमौसमकेंद्र
Guwahati – 781 015/ गुवाहाटी- ७८१०१५



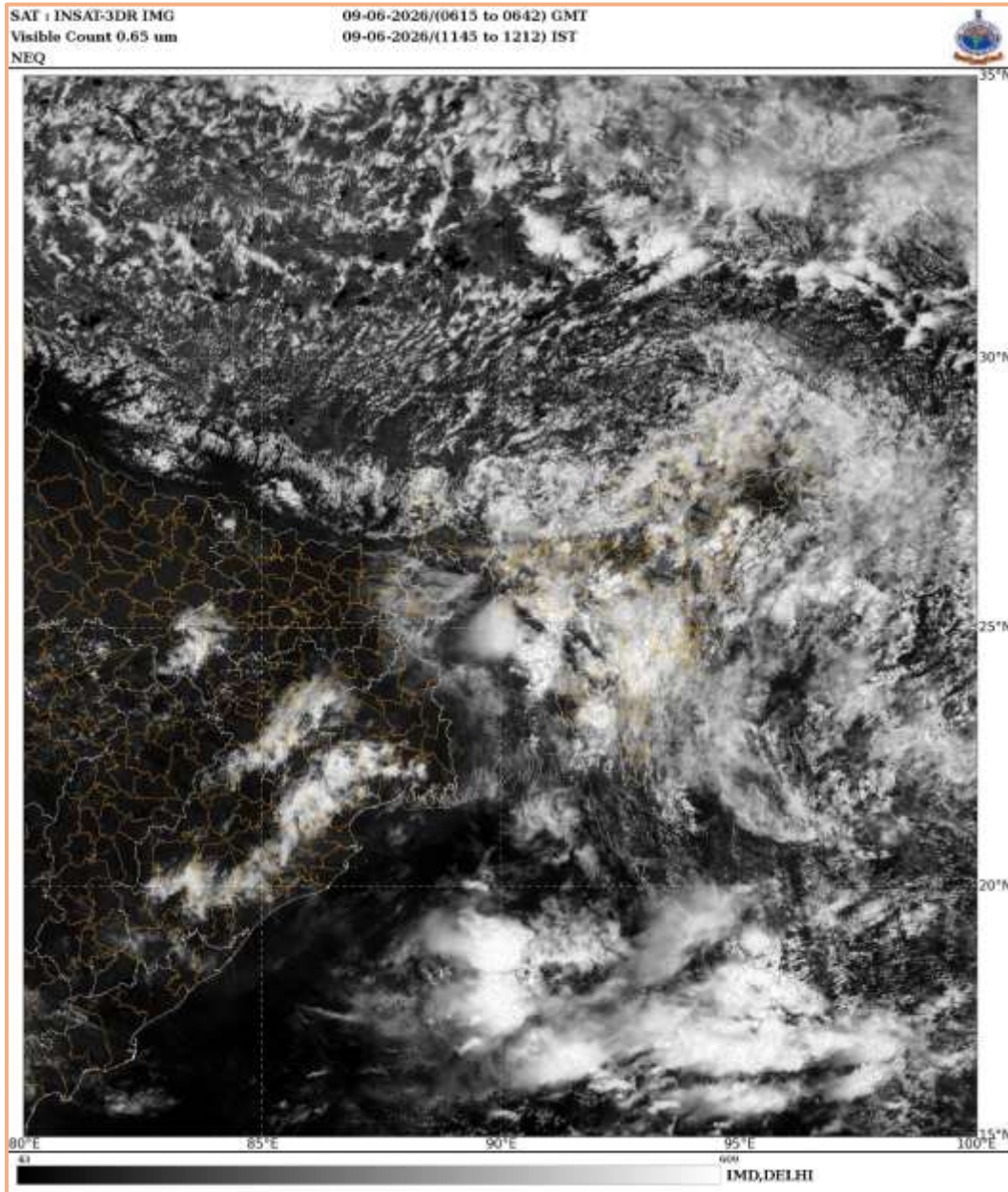
Date: 09-06.2026

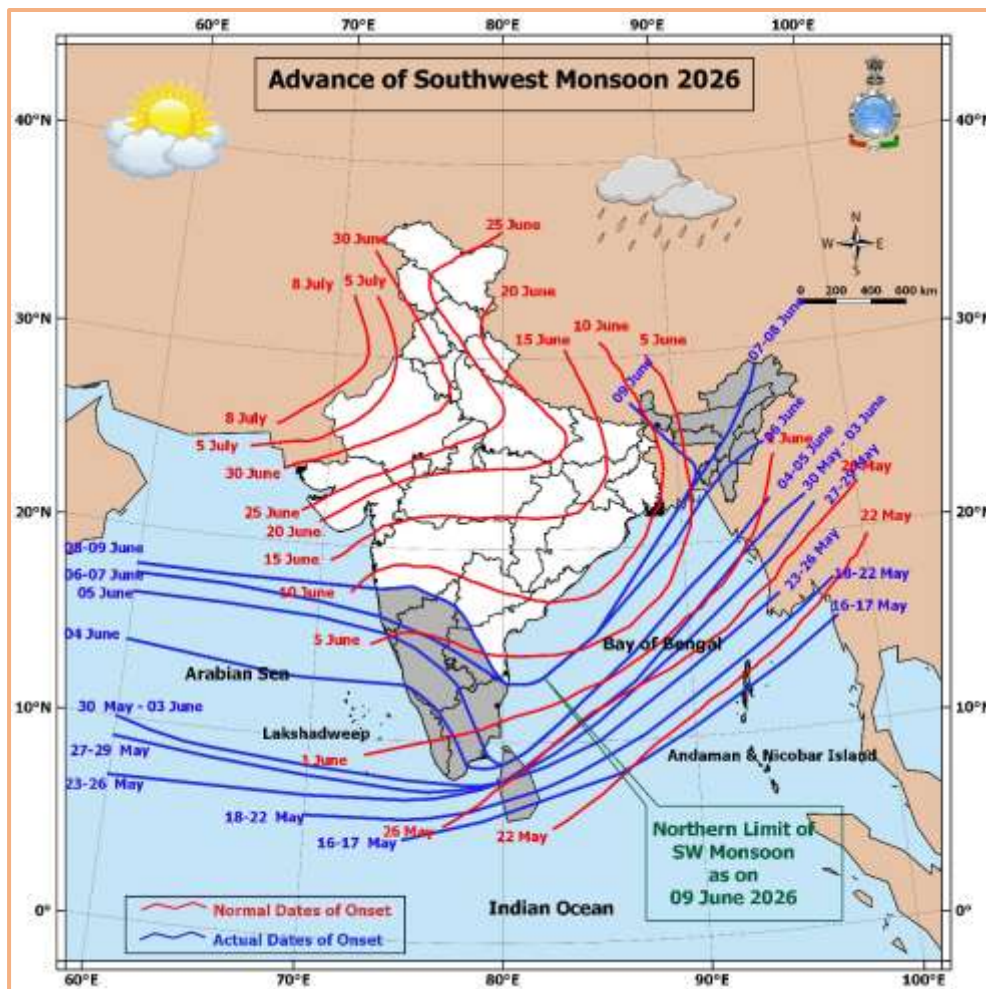
Time: 1300hrs.IST

**SPECIAL WEATHER BULLETIN: FOR HEAVY TO VERY HEAVY RAINFALL AND WIND GUSTING
UPTO 30-40 KMPH**

Current Meteorological Conditions and Monsoon Scenerio:

- 1.The Southwest Monsoon has further advanced into remaining parts of northeastern states (including Assam), entire Sikkim and some parts of Sub-Himalayan West Bengal, today the 9th June, 2026.**
- 2.The Northern Limit of Monsoon passes through 18°N/60°E, 18°N/65°E, 18°N/70°E, Harnai, Solapur, Kalaburagi, Nandyal, Chennai, 15.5°N/85°E, 22°N/90°E, 23.5°N/91°E, 25°N/90°E, Siliguri and 27.5°N/87.5°E as on 9th June.**
- 3.An upper air cyclonic circulation persists over East Uttar Pradesh & neighbourhood extending upto 1.5 km above mean sea level.**
- 4.A trough runs from east Bihar to coastal parts of Gangetic West Bengal at 1.5 km above mean sea level.**
- 5.An upper air cyclonic circulation lies over Sub-Himalayan West Bengal & Sikkim & neighbourhood at 0.9 km above mean sea level.**





Under the influence of the above, (i) Thunderstorms with lightning and gusty winds at isolated places, (ii) Light to moderate rainfall at most places over the districts of Assam with isolated heavy to very heavy rainfall is very likely on 09th to 13th June, 2026. The detailed weather related Districtwise Orange warnings with impacts and action to be taken are attached below.

| | Date | |
|---|------------|---|
| Forecast & Warnings (HEAVY TO VERY HEAVY RAIN, TSLG 30-40 KMPH) Based Upon (0830 hrs. IST) | 09-06-2026 | Thunderstorm with Lightning with light to moderate rain at most places along with Heavy (7-11cm/day) to very Heavy (12-20cm/day) rainfall and Gusty wind speed 30-40 kmph is very likely to occur at isolated places over the districts of SRIBHUMI & WEST KARBI ANGLONG. |
| | 10-06-2026 | Thunderstorm with Lightning with light to moderate rain at most places along with Heavy (7-11cm/day) to very Heavy (12-20cm/day) rainfall and Gusty wind speed 30-40 kmph is very likely to occur at isolated places over the districts of TAMULPUR & DIMA HASAO. |
| | 11-06-2026 | Thunderstorm with Lightning with light to moderate rain at most places along with Heavy (7-11cm/day) to very Heavy (12-20cm/day) rainfall and Gusty wind speed 30-40 kmph is very likely to occur at isolated places over the districts of TAMULPUR, BAKSA, CHIRANG, SOUTH SALMARA & DHEMAJI. |
| | 12-06-2026 | Thunderstorm with Lightning with light to moderate rain at most places along with Heavy (7-11cm/day) to very Heavy (12-20cm/day) rainfall is very likely to occur at isolated places over the districts of TAMULPUR & CHIRANG. |

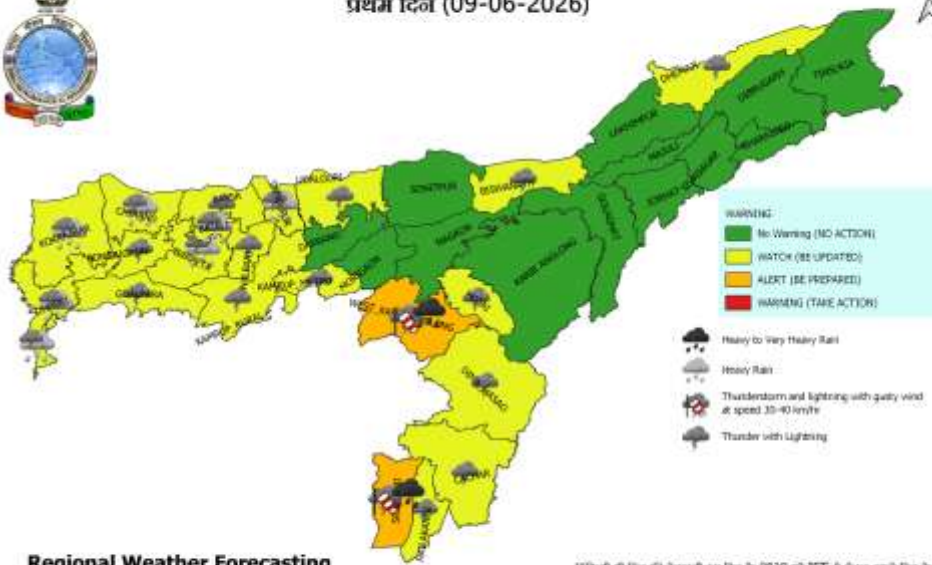
| | |
|--------------------------------|--|
| <p>Impact Expected</p> | <ul style="list-style-type: none"> ✓ Water logging, flooding may occur in some low-lying areas ✓ Landslides, landslips and mud-slips may occur in vulnerable areas ✓ Uprooting of trees & breaking of tree branches may take place ✓ Boats and ferry services may be affected ✓ Water logging in roads/ uprooting of trees/ breaking of tree branches/ strong wind may affect road & Rail traffic leading to increased travel time. ✓ Visibility may become poor due to intense spell of rainfall. ✓ Partial Damages to vulnerable structures due to wind, rain & uprooting of trees. ✓ Temporary disruption of power and municipality services. ✓ Lightning may injure people and cattle at open place. ✓ Temporary disruption to the communication and power etc. ✓ Possibilities of Flash floods due to intense spell of rainfall. ✓ Large hail can hurt people and livestock ✓ Roofs, windows and solar panels may break ✓ |
| <p>Action Suggested</p> | <ul style="list-style-type: none"> • People are requested to keep a watch on the weather for worsening conditions. • Follow traffic advisories. • Avoid staying in vulnerable structure. • Take safe shelters. • Provide proper drainage in the cropped field if heavy rainfall is expected. • Avoid/minimize commuting to areas that face water logging problem often. • Avoid landslide, landslip, mud-slip, flash flood prone areas. <p>Follow latest weather warning, SDMA and NDMACAP.</p> |

District-wise Warnings Maps for Assam(09th to 13th June, 2026)



मौसम चेतावनी मानचित्र: असम
Weather Warning Map: Assam
प्रथम दिन (09-06-2026)

दिनांक : 09-06-2026



- WARNING:
- No Warning (NO ACTION)
 - WATCH (BE UPDATED)
 - ALERT (BE PREPARED)
 - WARNING (TAKE ACTION)

- Heavy to Very Heavy Rain
- Heavy Rain
- Thunderstorm and lightning with gusty wind at speed 30-40 km/hr
- Thunder with Lightning

Regional Weather Forecasting
Centre, Guwahati
क्षेत्रीय मौसम पूर्वानुमान केंद्र, गुवाहाटी

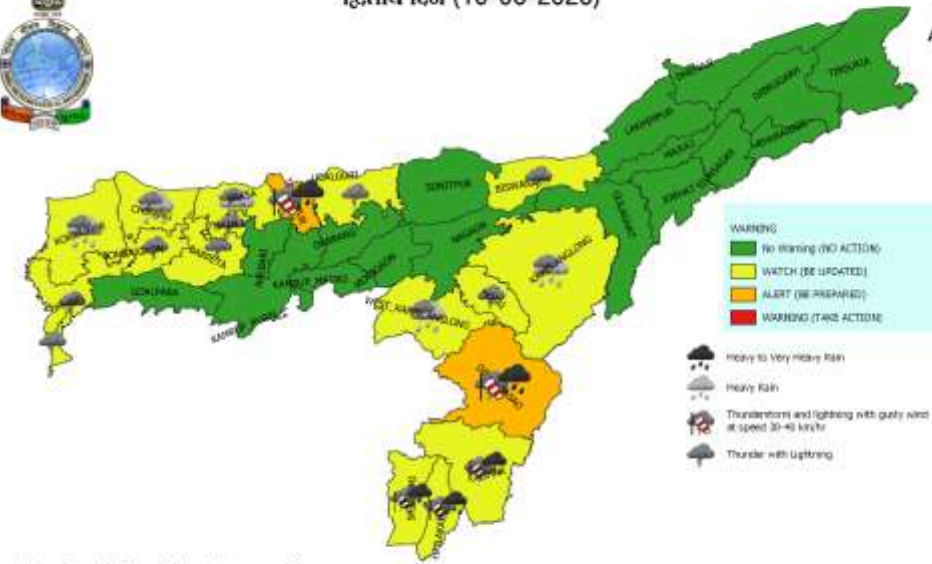
**बिना भी छत्र की रोशनी उन छत्र के 0830 से 1ST से फेर जहाँ छत्र के 0830 से 1ST
नहीं आता है।

**The warning for any day is valid from 0830 hours IST of the day till 0830
hrs IST of the next day.



मौसम चेतावनी मानचित्र: असम
Weather Warning Map: Assam
द्वितीय दिन (10-06-2026)

दिनांक : 09-06-2026



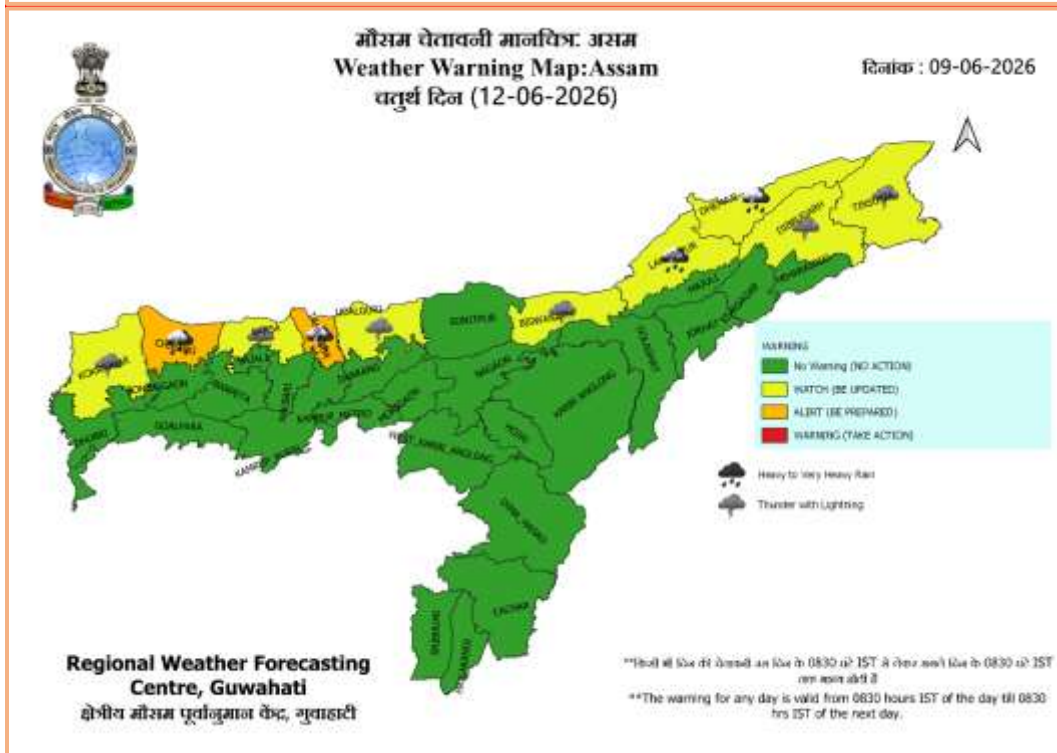
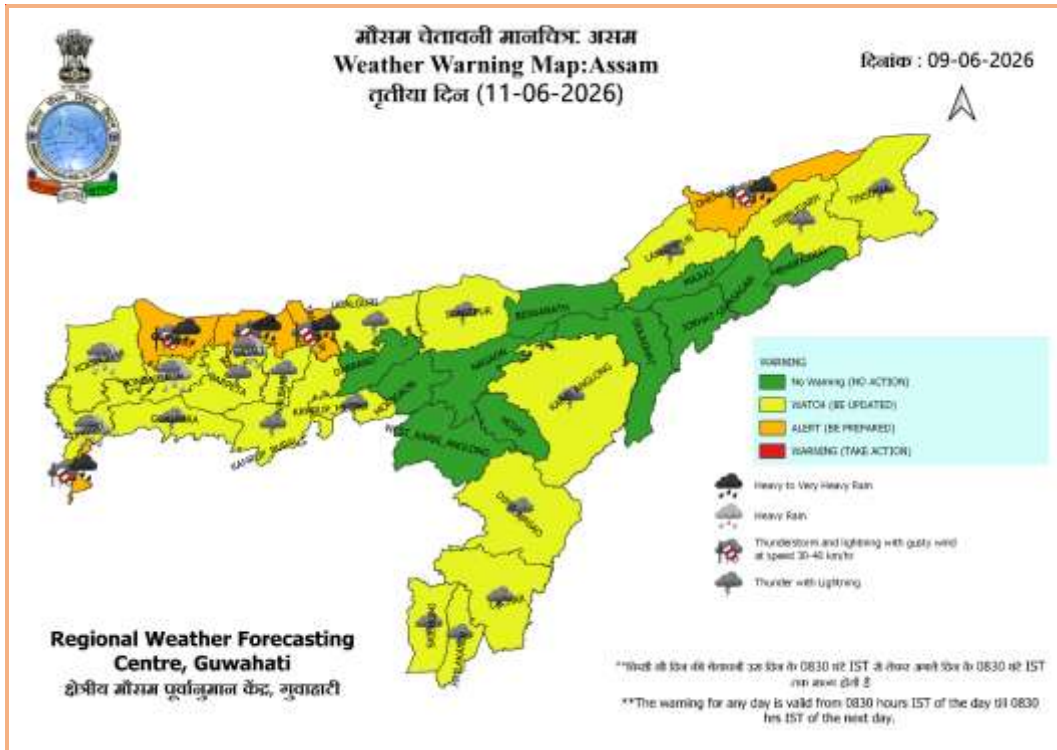
- WARNING:
- No Warning (NO ACTION)
 - WATCH (BE UPDATED)
 - ALERT (BE PREPARED)
 - WARNING (TAKE ACTION)

- Heavy to Very Heavy Rain
- Heavy Rain
- Thunderstorm and lightning with gusty wind at speed 30-40 km/hr
- Thunder with Lightning

Regional Weather Forecasting
Centre, Guwahati
क्षेत्रीय मौसम पूर्वानुमान केंद्र, गुवाहाटी

**बिना भी छत्र की रोशनी उन छत्र के 0830 से 1ST से फेर जहाँ छत्र के 0830 से 1ST
नहीं आता है।

**The warning for any day is valid from 0830 hours IST of the day till 0830
hrs IST of the next day.



| COLOR CODES | |
|-------------|----------------------------|
| Very Low | No action |
| Low | Be updated |
| Medium | Be prepared to take action |
| High | Take Action |

For Detailed weather forecasts & warnings, kindly visit RMC Guwahati website (<https://mausam.imd.gov.in/guwahati>)
 Phone: 0361-2968241; Fax: 0361-2840238; e-mail: wsguwahati@gmail.com

+++++
 Kindly download and use "Mausam" App for location specific forecast and warning "Meghdoot" App for Agromet advisory and "Damini" App for Lightning warning
 +++++