

## Social Media :

Weather information are uploaded daily in IMD Website, MC Bhopal website, Facebook, Twitter, Community Radio and Whatsapp.

## Media Briefing:

Regular media briefing is done for weather related information and press release in case of severe weather.

## OBSERVATIONAL NETWORK

M. C. Bhopal issues forecast for 51 districts of Madhya Pradesh. It has a network of :

- ◆ 09 Departmental Observatories (Bhopal, Indore, Jabalpur, Gwalior, Sagar, Satna, Hoshangabad, Khajuraho and Guna)
- ◆ 24 Non-departmental observatories,
- ◆ 9 Agro- meteorological observatories,
- ◆ 51 Automatic Weather stations (AWS),
- ◆ 101 Automatic Rain Gauges (ARG),
- ◆ 09 Agro – AWS (Sehore, Jabalpur, Powerkheda (Hoshangabad), Morena, Khargone, Jhabua, Tikamgarh and Chhindwara)
- ◆ 03 RSRW stations (Bhopal, Jabalpur and Gwalior)
- ◆ 01 Seismological Observatory (Bhopal) and
- ◆ 01 Doppler Radar (Bhopal)

## Weather forecast for public safety and socio-economic benefit:

- ◆ 24 hour Daily forecast and warning
- ◆ 5 days districtwise rainfall forecast and warning
- ◆ District wise biweekly agriculture advisory
- ◆ Nowcast
- ◆ Severe/ Extreme weather warnings (Heavy rainfall, Cold Wave, Heat Wave, Fog, Frost)
- ◆ Impact based forecast
- ◆ Aviation services, VVIP movement
- ◆ Meteorological data supply
- ◆ Field visit
- ◆ Student visit, Scientific fests, Workshops and Seminars

## Important Links:

### Forecast (District, Subdivision and State wise)

<https://mausam.imd.gov.in/>

<http://www.imdbhopal.gov.in/>

### Warning

[https://mausam.imd.gov.in/imd\\_latest/contents/subdivisionwise-warning.php](https://mausam.imd.gov.in/imd_latest/contents/subdivisionwise-warning.php)

<http://www.imdbhopal.gov.in/imdbpl/districtforecast-hi>

### Agrometeorological advisories

[https://mausam.imd.gov.in/imd\\_latest/contents/agromet/advisory/englishstate\\_current.php](https://mausam.imd.gov.in/imd_latest/contents/agromet/advisory/englishstate_current.php)

<http://imdagrmet.gov.in/imdproject/AGIndex.php>

<http://www.imdbhopal.gov.in/imdbpl/agromet-main-hi>

### Nowcast

[https://mausam.imd.gov.in/imd\\_latest/contents/districtwisewarnings.php](https://mausam.imd.gov.in/imd_latest/contents/districtwisewarnings.php)

[https://mausam.imd.gov.in/imd\\_latest/contents/stationwise-nowcast-warning.php](https://mausam.imd.gov.in/imd_latest/contents/stationwise-nowcast-warning.php)

Apps for instantaneous weather updates **MAUSAM, ME-GHDOOT AGRO, DAMINI and UMANG** apps.

### For further details kindly contact

**Meteorological Centre Bhopal,  
Arera Hills, Bhopal – 110003**

[gsmcbhopal@gmail.com](mailto:gsmcbhopal@gmail.com)

[www.imdbhopal.gov.in](http://www.imdbhopal.gov.in)

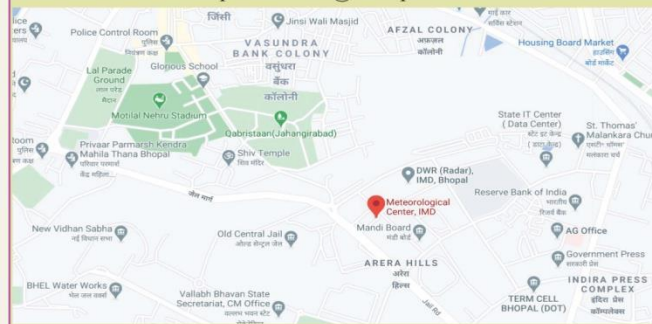
0755- 2552496, 2552743

Agrometeorological Services – 0755 4939003

Aviation Met Services – 0755 2641548

Data Supply – 0755 2559892

Mausam Bhopal @BhopalMausam



मौसम केंद्र भोपाल

**Meteorological Centre Bhopal**

**भारत मौसम विज्ञान विभाग**

**India Meteorological Department**

1875 से राष्ट्र सेवा में समर्पित

(Established in 1875)

पृथ्वी विज्ञान मंत्रालय

**Ministry of Earth Sciences**

भारत सरकार

**Government of India**



## HISTORY OF METEOROLOGICAL CENTRE BHOPLA

Meteorological Centre, Bhopal was established in 1976 as Madhya Pradesh State Forecasting center at State capital Bhopal. In 1981 State Agro-Meteorological Centre was established under M.C. Bhopal to provide weather forecast for the farmers as Madhya Pradesh has large geographical area concerned with farming. The office has grown manifolds in forth coming years as kept on adding various tools and techniques including X-band Radar, Seismological observatory, AWS, ARG. In 2014, Doppler Weather Radar commissioned at Bhopal, used for continuous monitoring of severe weather 24x7 in Madhya Pradesh. The observatory is situated near Raja Bhoj Airport, Bhopal for smooth functioning of aviation services.



## Forecast and Bulletin for M.P.

Various types of forecast are issued for the general public and various Government agencies.

- ◆ Subdivision wise and Districtwise 24 hrs Forecast and warning for 51 districts of M.P.
- ◆ 5 days Districtwise rainfall forecast
- ◆ Districtwise Rainfall Measurement System (DRMS)
- ◆ 7 days Local/ City weather forecast for 18 cities of M.P.
- ◆ Districtwise and station wise 3 hourly Nowcast for weather events .
- ◆ 7 days Tourism Forecast for Tourist stations
- ◆ Extended outlook for 2 weeks
- ◆ VVIP forecast
- ◆ Daily weather report
- ◆ Weekly weather report every Thursday

## Agrometeorological Services

State Agrometeorological Services were started in M.P. during 1981 to provide meteorological services to the agriculture sector. The District level Agro Meteorological Advisory Bulletin was started in 2008 issuing biweekly advisory bulletin for farming community on every Tuesday and Friday. The advisory bulletin is moving at micro level by generating Block level Agro Meteorological Advisory Bulletin since 2019. The advisory are communicated to farming community via Radio, SMS, News bulletin, Krishi Vigyan Kendras etc.

## Aviation Services

Aviation Service, includes, current and forecast weather at aerodrome is taken care by the Aviation Meteorological Office, at Raja Bhoj Airport Bhopal. It includes takeoff forecast, significant weather, aerodrome warnings etc , required for aircraft movements.

## Climatological Services

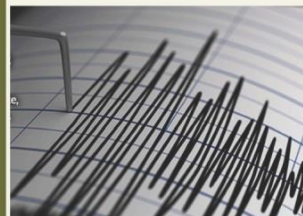
Weather related data i.e. surface and upper air observations and weather reports are recorded and archived for the State. The same are provided to various Government organisations, Research Institutions, Public and Private sectors as per requirement based on the IMD policy of data supply.



Weather Forecast



Agro-meteorological services



Seismology



Mountaineering



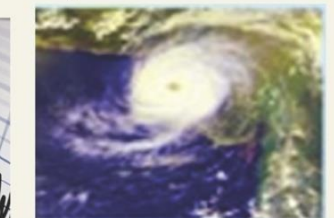
Research & Services



Civil Aviation



Hydromet Services



Cyclone Services



Defense



Marine and Fisheries

## New Initiatives

- ◆ **Block Level Forecast** issued for the blocks and advisory based of the block level forecast
- ◆ **Impact Based Forecast** issued for State capital (Bhopal) based on the rainfall probability for low lying areas prone to water logging.
- ◆ **Cold Wave and Heat Wave Action Plan** in collaboration with State Government
- ◆ **Flash Flood Guidance System** for issuing warning for flash flood for the State.
- ◆ Weekly subdivision wise **Extended Range Forecast** for two weeks for the State



## Seismic Zones of M.P.

