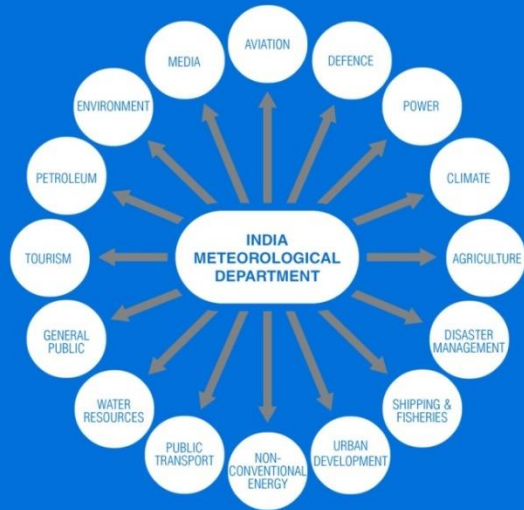


Various Sectors catered by IMD for their specific needs



Meteorological Centre, MC Shillong

A Meteorological Observatory was established in Shillong on **November 1, 1956** in 3rd Mile, Upper Shillong area at Central Seismological Observatory Campus.



Later on, Meteorological Observatory is upgraded to Meteorological Centre Shillong to cater the weather specific needs of Meghalaya State. Various weather related services are operational at MC Shillong since May 2018.

Student Visits



Meteorological Centre Shillong encourages students to visit its campus for having practical exposure to various instruments and aspects of weather, climate and forecasting.

Extreme Weather Ever Recorded at Shillong

HIGHEST MAXIMUM TEMPERATURE: **30.2 °C** on **04th April 1973**

LOWEST MINIMUM TEMPERATURE: **-3.3°C** on **30th December 1983**

HIGHEST 24 HOUR RAINFALL: **302.2 mm** on **15th September 1960**

FOR FURTHER DETAILS KINDLY CONTACT US AT:

- ✉ metshillong@gmail.com
- ☎ 0364-2561638
- 🌐 <https://mausam.imd.gov.in>
- 📘 [met.shillong.7](https://www.facebook.com/met.shillong.7)
- 🐦 @MetShillong

📍 India Meteorological Department
3rd Mile Laimer, Upper Shillong - 793005



पृथ्वी विज्ञान मंत्रालय
MINISTRY OF EARTH SCIENCES
भारत सरकार
GOVERNMENT OF INDIA



मौसम केंद्र, शिलांग
Meteorological Centre, Shillong

भारत मौसम विज्ञान विभाग
India Meteorological Department



Climate of Shillong Smart City

The climate of the place is characterized by cold in winter, mostly pleasant in the summer season and abundant rainfall during the period of April to October

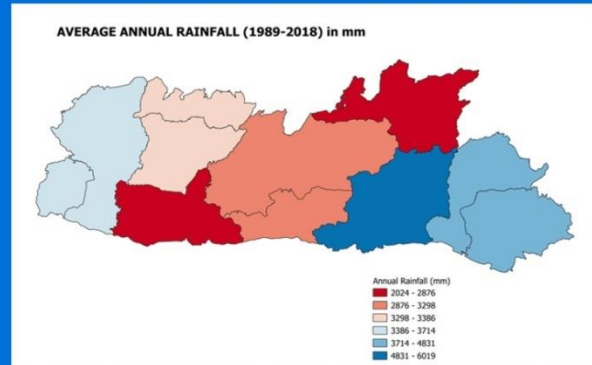
- Average annual Maximum Temp. is **21.0° C**
- Average annual Minimum Temp. is **13.0° C**
- Ever Recorded Maximum Temp. was **30.2° C**
- Ever Recorded Minimum Temp. was **-3.3° C**

- Average annual Rainfall is **202.2 cm**
- Average annual Rainy days are **117**

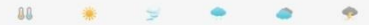
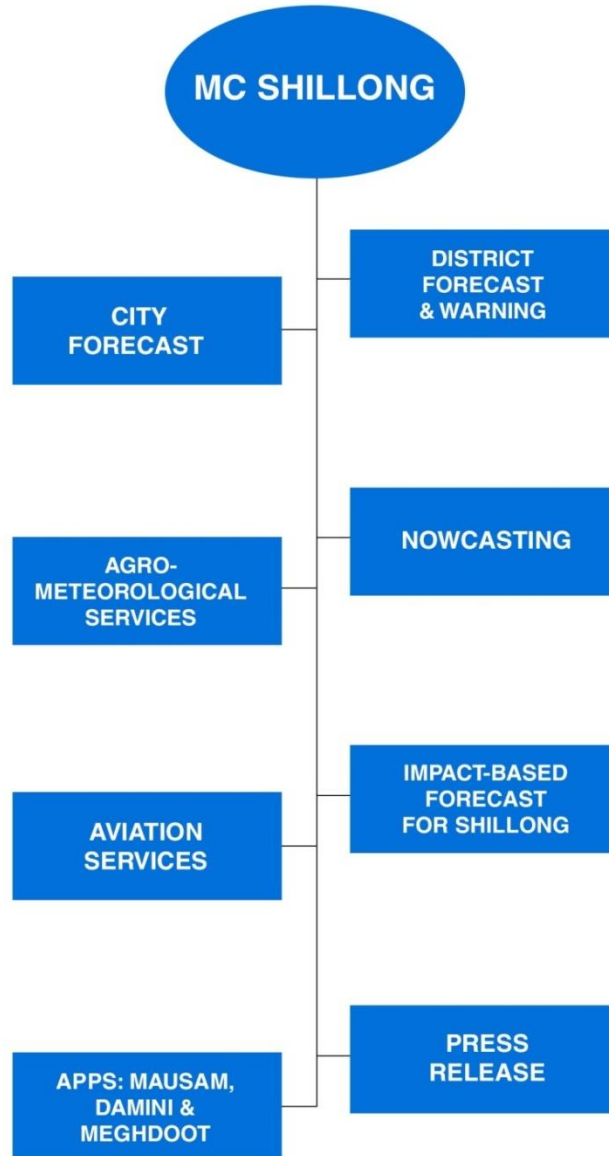
- Mean monthly highest rainfall observed in July is **43.8 cm**
- Mean monthly lowest rainfall observed in January is **0.8 cm**
- Ever recorded Heaviest Rainfall in 24 Hrs is **30.2 cm**
- Rainfall during the southwest monsoon season is about **68 %** of Annual rainfall.

Meghalaya Average Rainfall (Annual)

Average Annual Rainfall observed over Meghalaya is **3979.3 mm**.



Services Rendered



Observational Network

MC Shillong has **03 Departmental Observatories** and **10 Part-time Raingauge Stations**. Apart from that **07 nos.** of Automatic Weather Stations and **10 nos.** of Automatic Rain Gauge. It has **01 Radio Sonde / Radio Wind (RSRW)** at Shillong.

Shillong radiation section is **One of 13 World Radiation Data Centers in India**.

Doppler Weather Radar is installed at **MO Sohra**. It is installed, maintained and operated by **NESAC, Umiam, Shillong**.

OBSERVATION NETWORK OF MC SHILLONG:



Map locations of AWS, ARG & Observatory across the state.