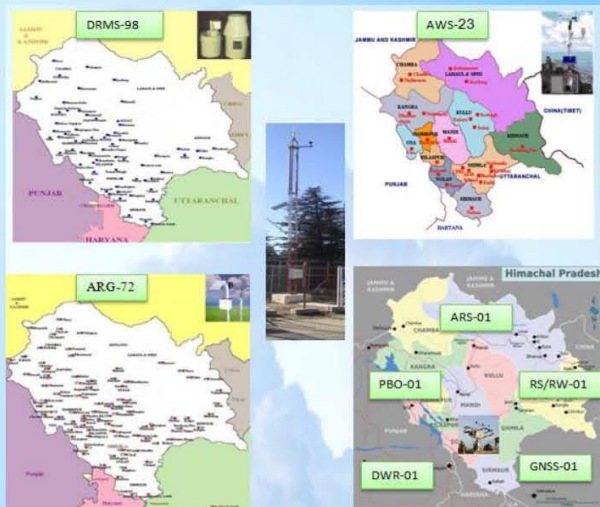
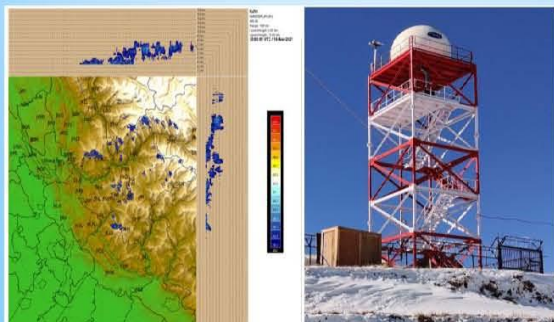


Meteorological Network in Himachal Pradesh



In Himachal Pradesh there are six number of IMD surface observatories, ten part time observatories, 98 number of DRMS stations, 23 AWS, 72 ARG, 1 DWR, 1 ARS, 1 GNSS, 1 RS/RW and PBO.

Doppler Weather RADAR at Kufri (Shimla)



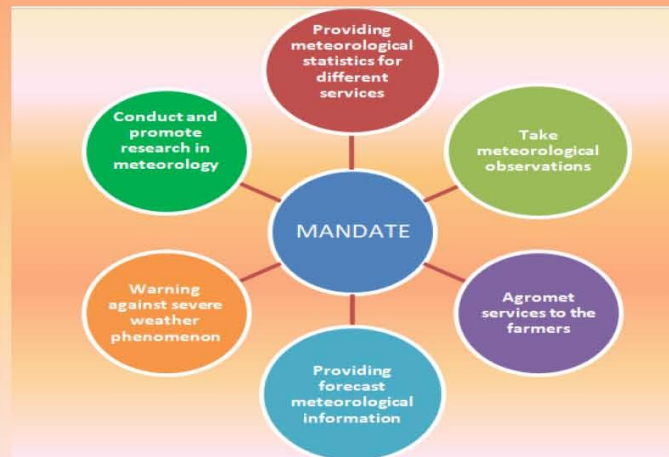
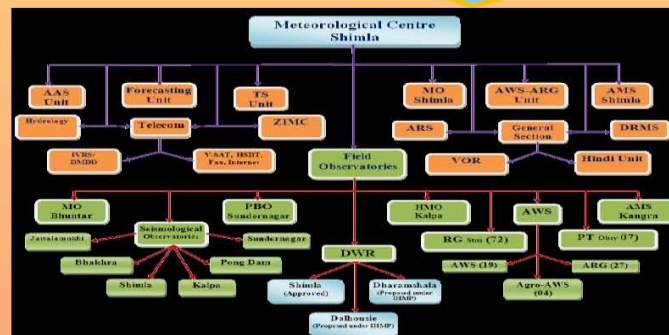
A Doppler Weather Radar was installed at Kufri, Shimla during December 2020. It has been of immense help in providing precise location and timespecific warnings for heavy rainfall and strong winds on a short time scale for the state of HP.

About Meteorological Centre, Shimla

Meteorological Centre Shimla was established on 9th December, 2002 in Shimla, the capital city of Himachal Pradesh. Its aim is to provide various meteorological, agro-meteorological, seismological, aviation and allied services to the state of Himachal Pradesh (HP).



Organisational Structure



भारत सरकार
पृथ्वी विज्ञान मंत्रालय
भारत मौसम विज्ञान विभाग
मौसम विज्ञान केंद्र,
शिमला 171001

GOVERNMENT OF INDIA
MINISTRY OF EARTH SCIENCES
INDIA METEOROLOGICAL DEPARTMENT
METEOROLOGICAL CENTRE,
SHIMLA-171001

Agromet Advisory Service Unit (AASU)

In order to provide the direct services to the farming community of the state of HP, Agromet Advisory Service (AAS) Unit started in Shimla w.e.f Aug 2003. There are four Agro-meteorological Field Units (AMFU) in Himachal Pradesh. Following major activities are being done under this unit:

- Considering the high variability of weather in time and space and need of farming sector, Agro-met advisory services upgraded from Agro-climatic zone scale to district level w.e.f June 2008.
- District level 5-days Weather forecast for the various weather parameters like quantitative rainfall, maximum and minimum temperature, humidity, cloud amount and wind speed and direction issued twice in a week.
- District level Past weather and summery provided to the users along with the forecast
- Composite Agro Advisory Service Bulletins were issued for the state of HP.
- Block Level Weather Forecast and Agro Advisory Services are being implemented in the state w.e.f Feb 2021.
- Latest mode of communications i.e. SMS and Interactive Voice Response System are being utilized for dissemination of Advisories.
- Five day district and block level quantitative forecast for 7 weather parameters viz. rainfall, maximum temperature, minimum temperature, advisories is issued on Tuesdays & Fridays for the benefit of the farming

Organisation Chart of AASU Shimla



Conferences and Meets

Meteorological centre Shimla regularly organizes Conferences and user meets on topics related to weather and climate. Some of the prominent conferences and users meets organized in recent past are given below.

- Users conference on Weather and Climate over Western Himalayan Region
- Conference on Integrated Agro Advisory services for the state of HP.
- Users Conference for Agro Meteorological Services for the state of HP.
- Second Users Conference for the requirement of Weather and Climate Services in HP.



Contact Details

Meteorological Centre, Shimla (HP)-171001
Phone Number: 0177-2624976, 2629724, 2626211, 2920976
Fax: 0177-2626211
Email: metcentresml@gmail.com,
Website-www.weathershimla.nic.in

- Facebook: <https://www.facebook.com/himachalmausam/>
- Twitter: <https://twitter.com/himachalmausam>
- YouTube: https://www.youtube.com/channel/UCbEKSbC5FA8n5LWmAHJVRsg?view_as=subscriber
- Instagram: <https://www.instagram.com/metcentresml/>

CLIMATOLOGY OF SHIMLA

- Average annual maximum temperature of Shimla is 18.4°C and minimum is 10.2°C.
- The lowest average monthly minimum temperature in Shimla is in the month of January i.e. 2.5°C.
- The highest average monthly maximum temperature in Shimla is in the month of June i.e. 24.3°C.
- The annual rainfall in Shimla is 1415mm.
- Highest monthly rainfall occurs in the month of July.
- The ever highest Maximum temperature in Shimla is 32.4°C recorded on 27th May 2010 and the ever lowest minimum temperature in Shimla is -10.3°C recorded on 11th January 1945.

TEMPERATURE AND RAINFALL OVER SHIMLA

MONTH	MAXIMUM(°C)	MINIMUM(°C)	RAINFALL(mm)
January	10.3	2.5	53.4
February	11.5	3.3	65.1
March	15.7	6.9	70.3
April	20.6	11.5	56.4
May	23.8	14.5	78.8
June	24.3	15.9	193.7
July	22.1	15.5	346.0
August	21.5	15.1	313.6
September	21.5	13.7	159.4
October	20.0	10.9	33.5
November	16.4	7.6	18.1
December	13.1	4.8	26.8
Annual	18.4	10.2	1415.1

