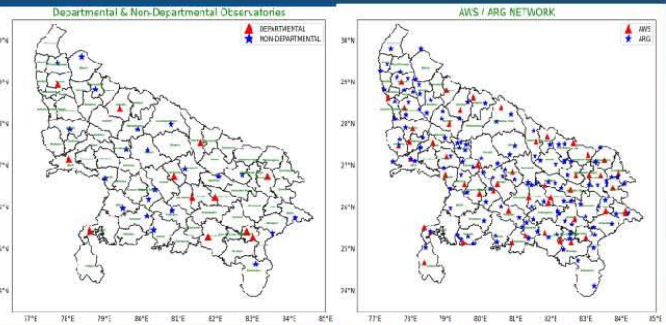


History of Meteorological Centre Lucknow

- > A Meteorological observatory was established during British period on October 6, 1894 within the city.
- > It was shifted at Amausi area (Krishna Nagar) on February 1, 1948 and finally shifted to Amausi Airport (Chaudhari Charan Singh International Airport) on 29 November, 1972.
- > Dedicated Doppler Weather Radar(DWR) building came in existence on 2012.



Observational Network



Awards & Recognition

- > AMO Lucknow was honored as Best AMO-2016 and Best AMO-2018.
- > Shri J. P. Gupta, Scientist-F and Head of M.C. Lucknow was honored with Best Group-A officer 2019 award.
- > M.C. Lucknow was honored with Best M.C-2020 award.

Meteorological Apps

- Recently the following meteorological Apps are introduced by IMD (MOES) for mobile (Android / ios) users:
- > **Mausam App:** Location specific forecast & warning.
 - > **Damini App:** For Lightning alert.
 - > **Meghdoot App:** For Agro Advisory Service



Contacts Us

Office of Head,
 Meteorological Centre, Lucknow
 C.C.S.I. Airport, Amausi, Lucknow - 226009

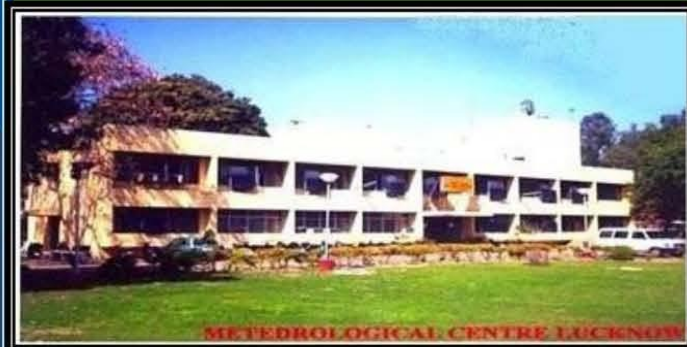
www.rmcnewdelhi.imd.gov.in/MET_CENTRES/_MCLUCKNOW/

mclucknow@gmail.com
mausam.lucknow
 @Centrelucknow

0522-2436283, 2436301, 2433406



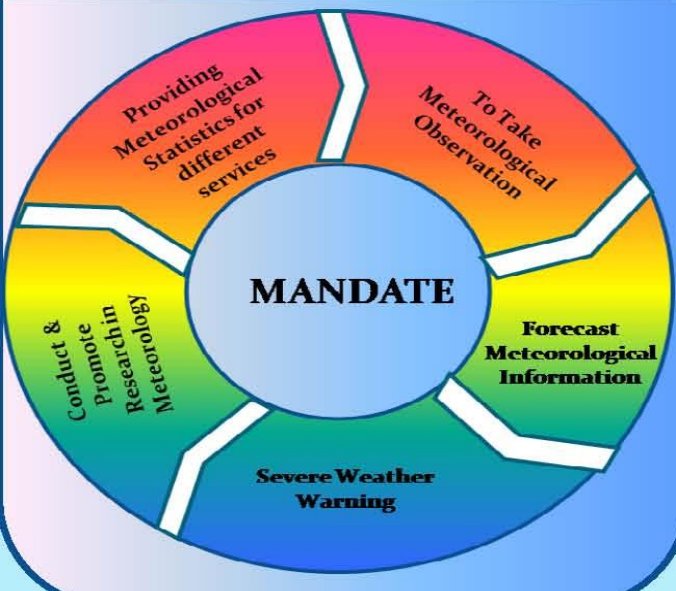
मौसम केंद्र, लखनऊ
Meteorological Centre, Lucknow
 भारत मौसम विज्ञान विभाग
India Meteorological Department
 (1875 से राष्ट्र की सेवा में समर्पित)
 (Established in 1875)
 पृथ्वी विज्ञान मंत्रालय
Ministry of Earth Sciences



Forecast & Bulletin



MC Lucknow Mandate



New Initiatives

Impact Based Forecast

- For Rainfall
- For Fog, Cold Wave & Cold Day

Extended Range Forecast

- 2 Weeks Outlook

Forecasting Tools & Technique

Synoptic Charts

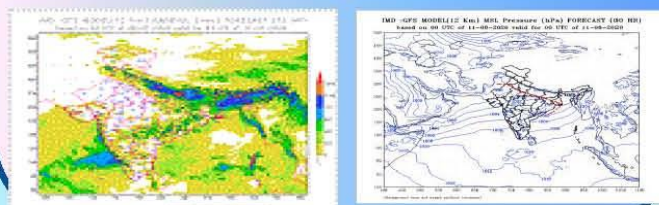
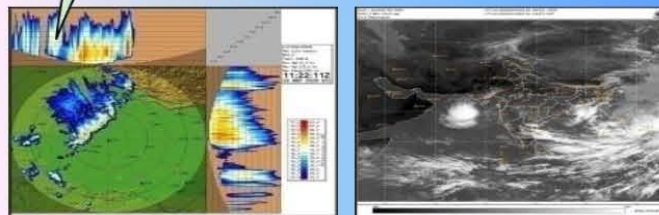
+ Radar

+ Satellite

Meteorological Observation

Analysis & Discussion

Global & Regional Model

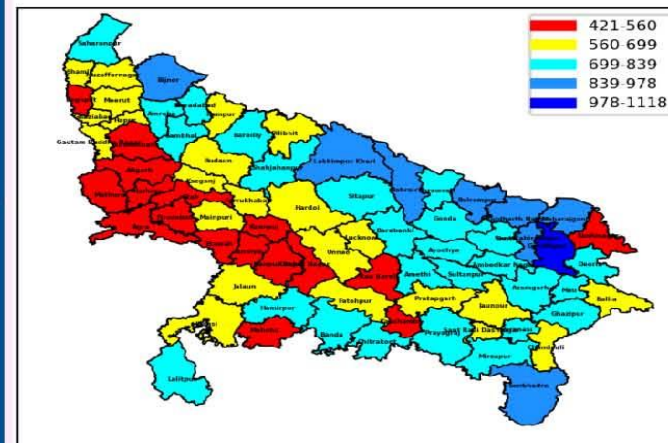


Smart City Lucknow Normal

- Average Annual Max. Temp. is 32.0 °C.
- Average Annual Min. Temp is 18.6 °C.
- Ever Recorded Max. Temp. was 47.7 °C on 09th June 1966.
- Ever Recorded Min. Temp. was -1.0 °C on 31st Jan 1964.
- Average Annual Rainfall is 726 mm.
- Ever recorded Heaviest Rainfall in 24 hours is 272 mm on 9th July 1960.

Rainfall Normal

SOUTHWEST MONSOON AVERAGE RAINFALL (1989 to 2018) in mm



ANNUAL AVERAGE RAINFALL (1989 to 2018) in mm

