



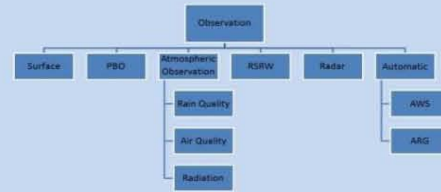
**Regional Meteorological Centre  
Nagpur**  
**India Meteorological Department**  
**Ministry of Earth Sciences**  
**Government of India**



• Regional Meteorological Centre (RMC), Nagpur was established on 1<sup>st</sup> April 1954. It has two Meteorological Centres at Bhopal and Raipur.

It maintains:

- 2 Doppler Weather Radars
- 62 Surface Observatories (18 Departmental and 44 Part-time),
- 6 Pilot Balloon Observatories,
- 6 Radiosonde stations
- 14 Agriculture observatories
- 345 Rain Gauge Stations
- 1 Radiation Observatory
- 80 Automatic Weather Stations.

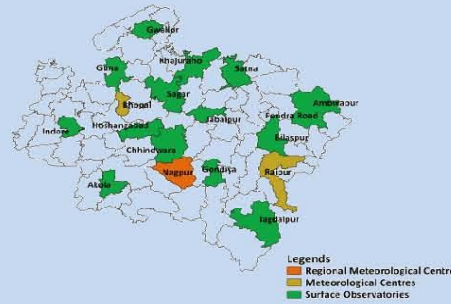


**Weather Forecasting Facilities and Services**

RMC Nagpur is equipped with Synergie and Metcap Plus software systems in which data from all India and NWP model forecast is displayed in one single platform.

Regional Weather Forecasting Centre (RWFC) of RMC Nagpur is responsible for issuing and disseminating weather forecast and warning of Madhya Pradesh, Vidarbha and Chhattisgarh to the stakeholders and media. Weather forecast is issued based on the observational analysis and NWP model guidance.

Departmental Observatories Under RMC Nagpur



The services provided by RMC Nagpur are as follows:

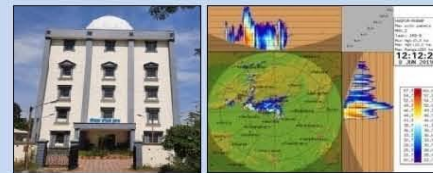
- Regional Weather Forecast of 5 days for Madhya Pradesh, Vidarbha and Chhattisgarh
- Meteorological Agro-Advisory 5-day Forecast for 11 districts of Vidarbha
- City weather forecast for 9 major cities in Vidarbha

- District wise weather forecast for Vidarbha
  - Location specific forecast for two locations in Nagpur City.
  - Aviation Meteorological Forecast at Nagpur Airport and other airports in Madhya Pradesh and Chhattisgarh.
  - Climatological data for cities under RMC Nagpur
  - A Data supply portal has been made operational for enquiry, retrieval and supply of data.
- <http://dsp.imdpune.gov.in>

Normal temperature and rainfall for Nagpur (1981-2010)			
	Max Temp (°C)	Min Temp (°C)	Rainfall (mm)
Annual	33.8	20.6	1100.3
Pre-Monsoon	39.9	23.9	52.1
Monsoon	33.2	24.5	919.7
Post-Monsoon	30.9	16.2	91.3
Winter	30.4	14.5	37.2

**Doppler Weather Radar (DWR)**

State of the art S-band Doppler Weather Radar, located near Nagpur Airport, is capable of weather surveillance up to 250 km (maximum upto 500 km) around Nagpur.



It provides imageries derived from volume scan depicting the location and height of clouds, horizontal winds, etc. The DWR images are a very good tool for weather analysis and Nowcasting.

**Important Links**

- IMD Website:  
<https://mausam.imd.gov.in/>
- RMC Nagpur website:  
<http://imdnagpur.gov.in/>
- Facebook:  
[https://www.facebook.com/RWFCNagpur/?modal=admin\\_todo\\_tour](https://www.facebook.com/RWFCNagpur/?modal=admin_todo_tour)
- Twitter:  
[https://twitter.com/RMC\\_Nagpur](https://twitter.com/RMC_Nagpur)
- Data Supply Portal:  
<http://dsp.imdpune.gov.in/>
- Mausam App:  
<https://play.google.com/store/apps/details?id=com.imd.masuam> (Android)  
<https://apps.apple.com/us/app/id1522893967> (Apple)
- Meghdoot App:  
<https://play.google.com/store/apps/details?id=com.aas.meghdoot> (Android)  
<https://apps.apple.com/in/app/meghdoot/id1474048155> (Apple)
- Damini App:  
<https://play.google.com/store/apps/details?id=com.lightening.live.damini> (Android)  
<https://itunes.apple.com/WebObjects/MZStore.wao/wa/viewSoftware?id=1502385645> (Apple)

**Contact details:**  
Regional Meteorological Centre  
Dr. Babasaheb Ambedkar International Airport, Sonegaon  
Nagpur-440005  
Email: [dkgmnagpur@gmail.com](mailto:dkgmnagpur@gmail.com), [rmc.nagpur@imd.gov.in](mailto:rmc.nagpur@imd.gov.in)

Contact no.: 0712-2282398, 0712-2282157