

REGIONAL METEOROLOGICAL CENTER, NEW DELHI



- RMC, New Delhi was started in **April 1945**.
- It caters to the meteorological requirements of Delhi along with North Western India (Jammu & Kashmir, Leh, Himachal Pradesh, Uttarakhand, Haryana, Punjab, Delhi, Uttar Pradesh and Rajasthan) through seven Meteorological Centres.

HISTORY





SECTORS SERVED


Recent Initiatives:


- Rain estimation based on Radar
- Extended Range Forecast
- Forecast issued for Ladakh, Gilgit, Baltistan and Muzaffarabad
- Impact based Forecast


For further details, contact us at:

 <https://rmcnewdelhi.imd.gov.in/>

 rwfcnewdelhi@gmail.com

 Regional Meteorological Centre, Lodi Road, New Delhi - 110003

 011-24629096, 011-24623537

 [profile.php?id=100011479543808](https://www.facebook.com/profile.php?id=100011479543808)

 @RWFC_ND

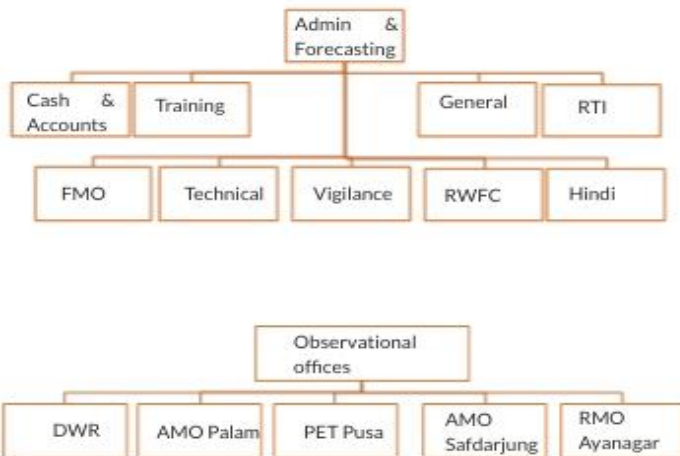
FUNCTIONS

- Weather forecasting services to general public, Government agencies and other users for research & planning purposes.
- Aviation forecast
- Flood forecasting
- Agromet Advisory Services
- Rainfall monitoring on daily, weekly, monthly, seasonal and annual basis.
- Implementation of District-wise Rainfall Monitoring Scheme (DRMS)

KEY PRODUCTS

City forecast for 7 days	Location / district specific nowcasting	Regional Daily Weather Report
North West India Weather inference, forecast and warnings for 5 days	Monsoon watch	Quantitative Precipitation Forecast and Hydromet Bulletin
Agro Advisory Bulletin	Climatology	Tourism and Pilgrimage forecast
NWP products	Online Met Briefing System	

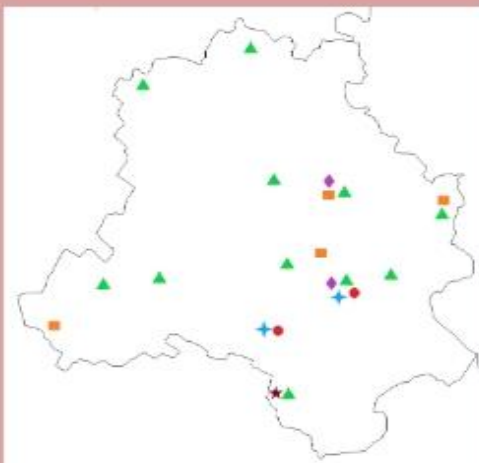
Organisation structure of RMC Delhi



Sub - divisions under RMC Delhi across all MCs



Observation network of Delhi



- ▲ Automatic Weather stations
- ◆ Meteorological observatory
- Part time observers
- Radar
- ✦ Aerodrome Meteorological Offices
- ★ RS/RW Station



WMO Visit

EXTERNAL VISITS



TRAININGS

Climatological data of Delhi (Safdarjung)

Annual rainfall - 779.0 mm

Normal values	Winter		Pre-monsoon		Monsoon		Post-monsoon	
	Max	Min	Max	Min	Max	Min	Max	Min
Temperature at beginning (in °C)	19.6	7.2	25.6	12.4	40.5	27.5	34.5	22.9
Seasonal rainfall at end (in mm)	39.7		47.8		648.9		42.6	

MANDATE

To take meteorological observations and to provide current and forecast meteorological information for optimum operation of weather-sensitive activities like agriculture, irrigation, shipping, aviation, offshore oil explorations, etc.

To warn against severe weather phenomena like tropical cyclones, norwesters, duststorms, heavy rains and snow, cold and heat waves, etc., which cause destruction of life and property.

To provide meteorological statistics required for agriculture, water resource management, industries, oil exploration and other nation building activities.

To conduct and promote research in meteorology and allied disciplines

- SMS, Whatsapp
- Aeronautical Terminal Network
- Global telecommunication system
- Email, Websites
- Press, Radio, (Community radio)
- Social Media (Facebook, Twitter, etc.)

Fixed

LINKAGE

TV

